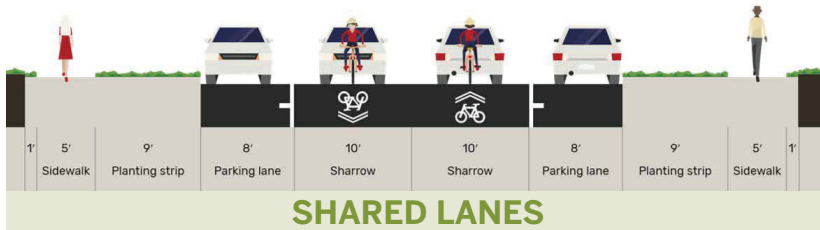
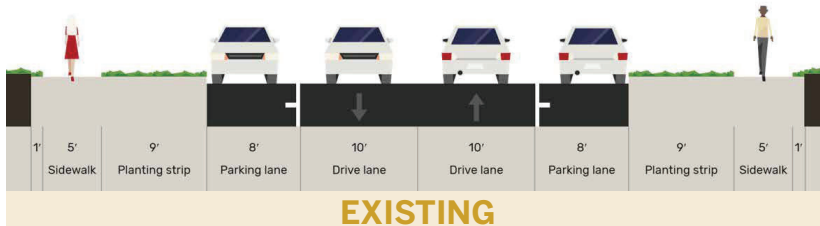




LOCKWOOD DRIVE

2022 MILL & OVERLAY BIKE FACILITY CONCEPTS

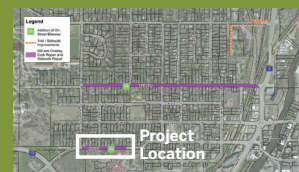
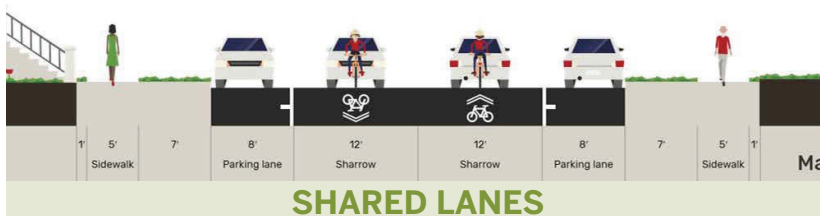
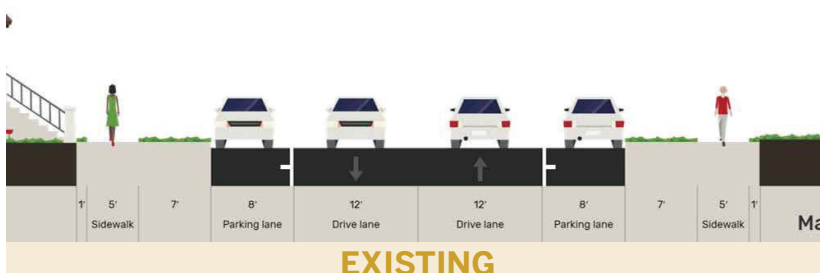


Bike facility striped with mill and overlay
Fits between existing curbs
Retains on-street parking
Matches lane uses and configurations adjacent to this project
Planned on-street bikeway as part of Northfield Planned Walking and Bicycling Network
Cost - \$



FOREST AVENUE

2022 MILL & OVERLAY BIKE FACILITY CONCEPTS

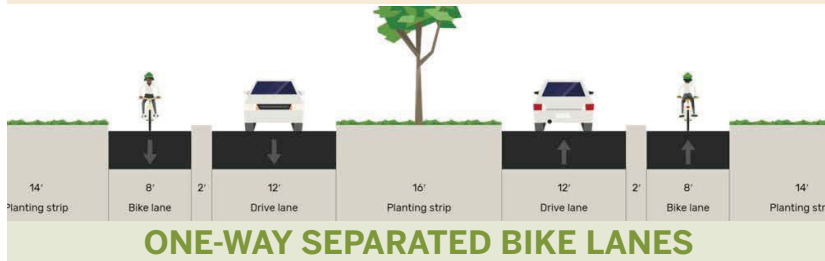
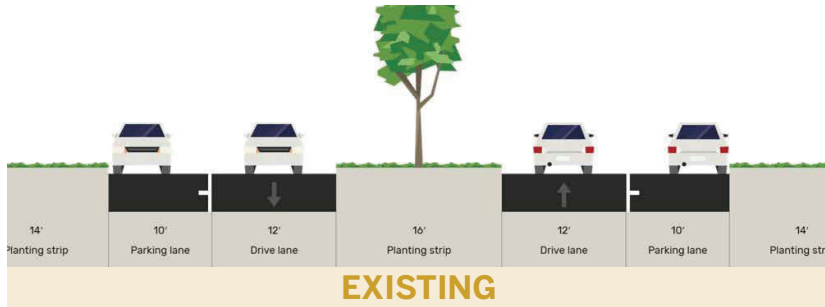


Bike facility striped with mill and overlay
Fits between existing curbs
Retains on-street parking
Matches lane uses and configurations adjacent to this project
Planned on-street bikeway as part of Northfield Planned Walking and Bicycling Network
Cost - \$



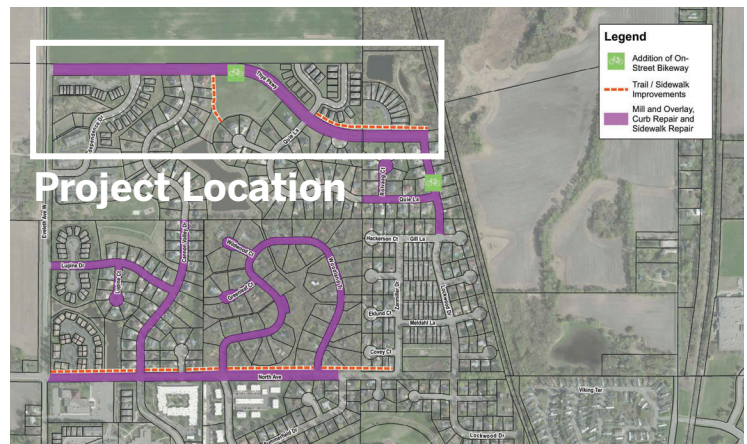
THYE PARKWAY

2022 MILL & OVERLAY BIKE FACILITY CONCEPTS



Bike facility constructed with mill and overlay
Fits between existing curbs
Eliminates on-street parking
Provides physical, vertical separation between people driving and biking with a physical element, such as raised curb, flexposts or bollards
Cost - \$\$

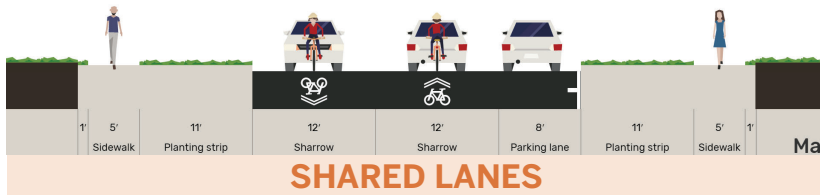
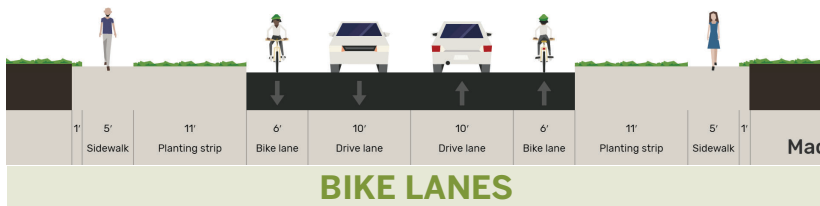
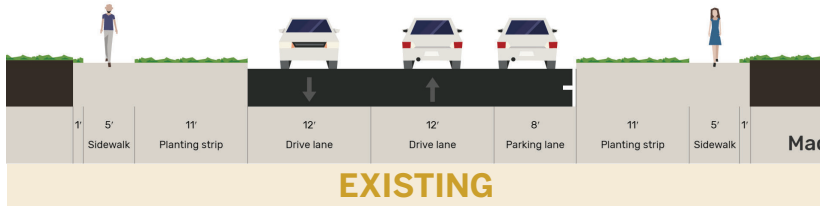
Bike facility constructed with mill and overlay
Fits between existing curbs
Eliminates on-street parking
Painted buffer with no physical separation between people driving and biking
Cost - \$\$





ST. OLAF AVENUE

2022 MILL & OVERLAY BIKE FACILITY CONCEPTS



Bike facility striped with mill and overlay
Fits between existing curbs
Eliminates on-street parking
Provides separate space for people driving and biking

Planned on-street bikeway as part of Northfield Planned Walking and Bicycling Network

Cost - \$

Bike facility striped with mill and overlay
Fits between existing curbs
Retains on-street parking
Shared space for people driving and biking

Planned on-street bikeway as part of Northfield Planned Walking and Bicycling Network

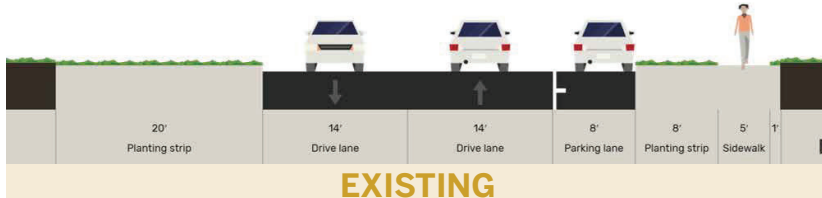
Cost - \$





NORTH AVENUE

2022 MILL & OVERLAY BIKE FACILITY CONCEPTS



Bike facility constructed with mill and overlay

Trail constructed outside of existing curbs

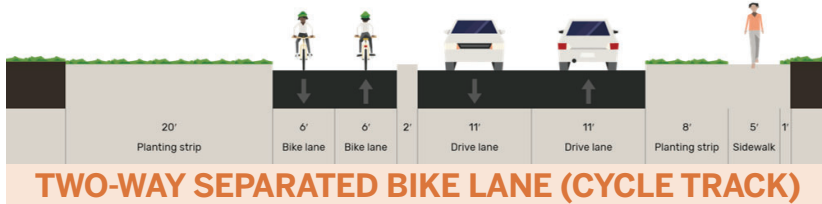
Impacts to north side trees

Retains on-street parking

Provides separate space for people driving, walking and biking

Planned off-street trail/path as part of Northfield Planned Walking and Bicycling Network

Cost - \$\$\$



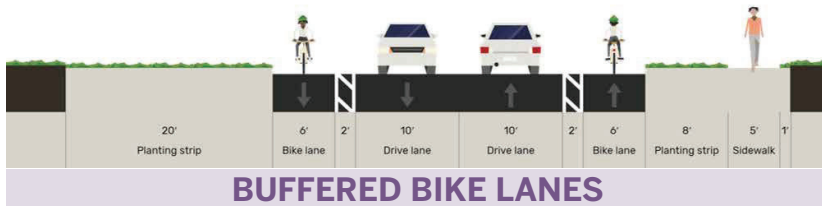
Bike facility constructed with mill and overlay

Fits between existing curbs

Eliminates on-street parking

Provides physical, vertical separation between people driving and biking with a physical element, such as raised curb, flexposts or bollards

Cost - \$\$



Bike facility constructed with mill and overlay

Fits between existing curbs

Eliminates on-street parking

Painted buffer with no physical separation between people driving and biking

Cost - \$

