

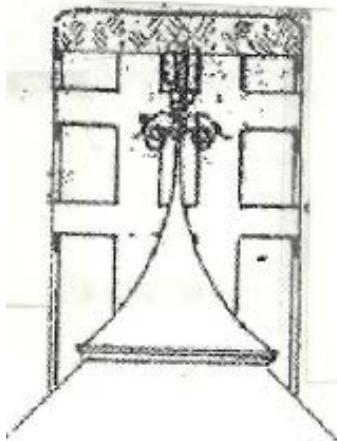
1888 Northfield Depot

***Save the Northfield Depot* presentation
to the City Council - August 17, 2021**

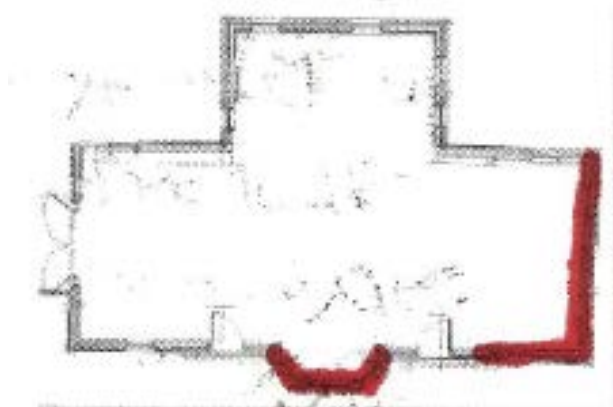
Application for designation of the
1888 Chicago, Milwaukee & St. Paul Railroad
(the Milwaukee Road) Depot
as a heritage preservation site



EXTERIOR – West Wall



EXTERIOR – South Wall



EXTERIOR – East Wall



1910



2015



2016



2019

EXTERIOR – North Wall



INTERIOR – North Wall



INTERIOR – West Wall



INTERIOR – South Interior Wall



INTERIOR – East Wall



Questions?

