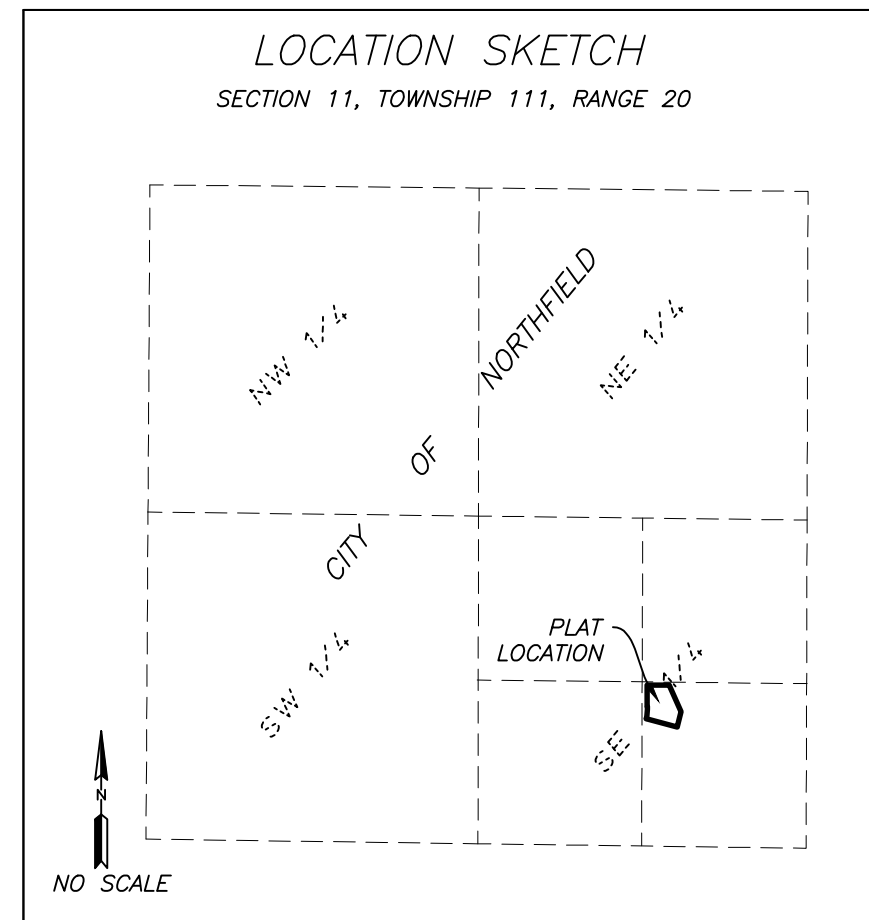
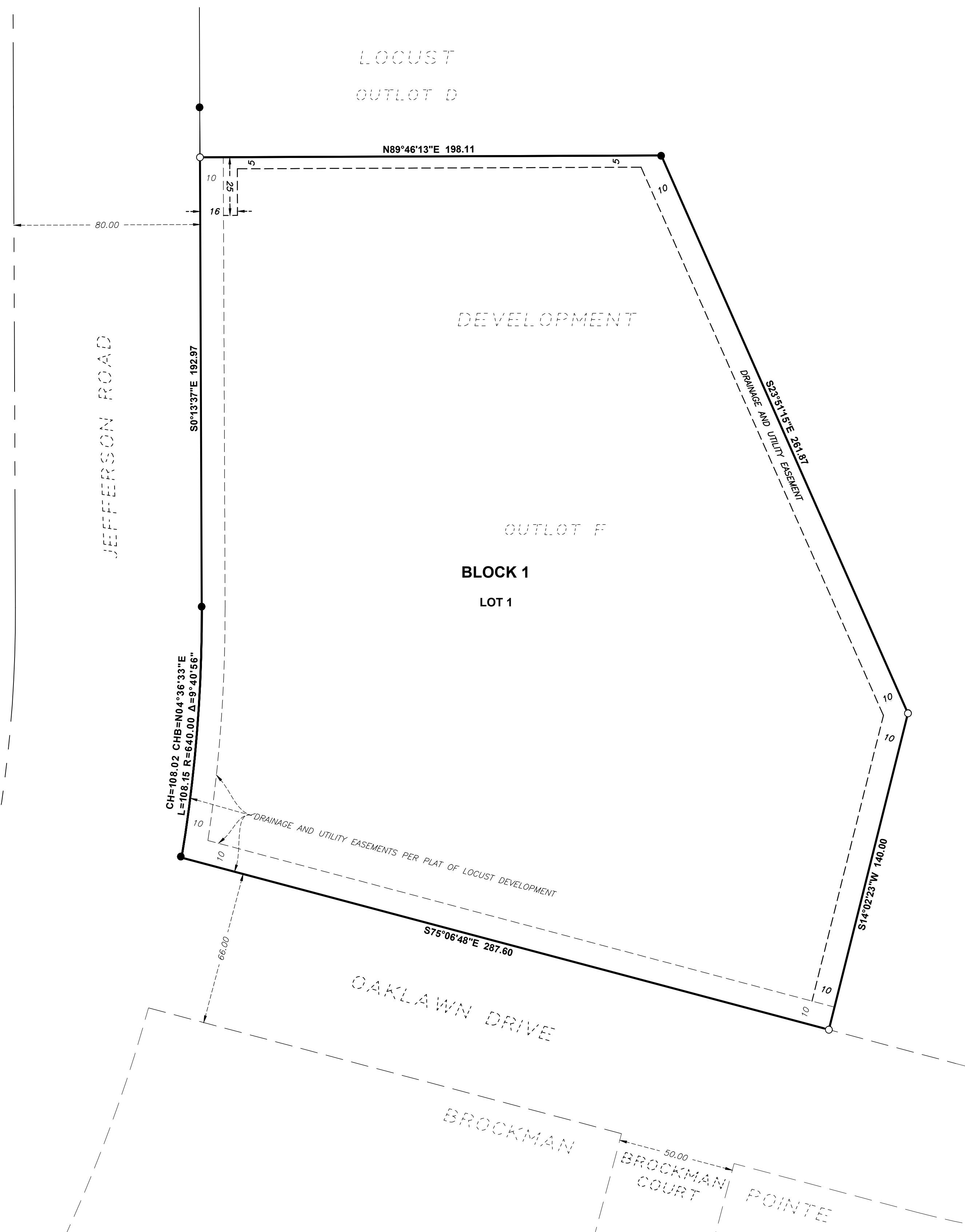
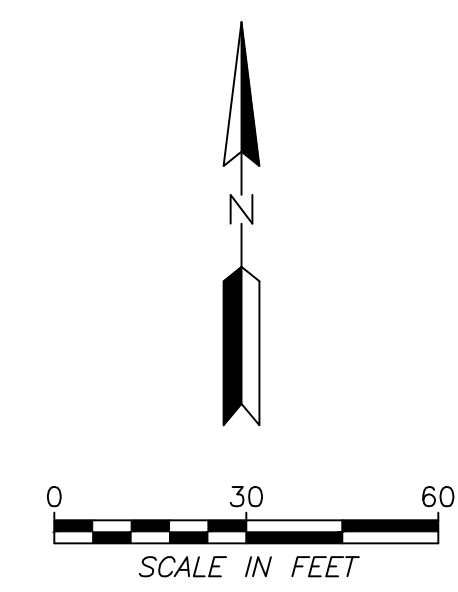


TIMBERFIELD APARTMENTS FIRST ADDITION



BEARING ORIENTATION NOTE:
 BEARINGS ARE BASED ON THE NORTHLINE OF OUTLOT F, LOCUST DEVELOPMENT, WHICH BEARS $N89^{\circ}46'13''W$ RELATIVE TO THE RICE COUNTY COORDINATE SYSTEM NAD83(2011 CONTROL ADJUSTMENT)



KNOW ALL PERSONS BY THESE PRESENTS: That Timberfield Apartments of Northfield Phase Two, LLLP, a Minnesota limited liability limited partnership, owner of the following described property:

Outlot F, LOCUST DEVELOPMENT, City of Northfield, Rice County, Minnesota

Has caused the same to be surveyed and platted as TIMBERFIELD APARTMENTS FIRST ADDITION and does hereby dedicate to the public for public use the drainage and utility easement as created by this plat.

In witness whereof said Timberfield Apartments of Northfield Phase Two, LLLP, has caused these presents to signed by its proper officer this _____ day of _____, 2021

Timberfield Apartments of Northfield Phase Two, LLLP

By: Timberfield Apartments of Northfield, LLC
Its General Partner

By: _____
Steven D. Kuepers
Its Chief Manager

STATE OF MINNESOTA
COUNTY OF _____

This instrument was acknowledged before me on _____ by Steven D. Kuepers, the Chief Manager of Timberfield Apartments of Northfield, LLC, general partner of Timberfield Apartments of Northfield Phase Two, LLLP.

(Signature) _____ (Name Printed) _____
 Notary Public, _____ County, _____
 My Commission Expires _____

SURVEYORS CERTIFICATE

I Chris Ambourn do hereby certify that this plat was prepared by me or under my direct supervision; that I am a duly Licensed Land Surveyor in the State of Minnesota; that this plat is a correct representation of the boundary survey; that all mathematical data and labels are correctly designated on this plat; that all monuments depicted on this plat have been, or will be correctly set within one year; that all water boundaries and wet lands, as defined in Minnesota Statutes, Section 505.01, Subd. 3, as of the date of this certificate are shown and labeled on this plat; and all public ways are shown and labeled on this plat.

Dated this _____ day of _____, 20__.

Chris Ambourn, Land Surveyor
Minnesota License No. 43055

STATE OF MINNESOTA
COUNTY OF _____

This instrument was acknowledged before me on this _____ day of _____, 20__, by Chris Ambourn.

(Signature) _____ (Name Printed) _____
 Notary Public, _____ County, Minnesota
 My Commission Expires _____

CITY COUNCIL, CITY OF NORTHFIELD, MINNESOTA

This plat of TIMBERFIELD APARTMENTS FIRST ADDITION was approved and accepted by the City Council of the City of Northfield, Minnesota at a regular meeting thereof held this _____ day of _____, 20__, and said plat is in compliance with the provisions of Minnesota Statutes, Section 505, Subd. 2.

City Council, City of Northfield, Minnesota

By: _____ Mayor
 By: _____ City Clerk

RICE COUNTY SURVEYOR

I hereby certify that in accordance with Minnesota Statutes, Section 505.021, Subd. 11, this plat has been reviewed and approved this _____ day of _____, 20__.

Michael Fangman
Rice County Surveyor

RICE COUNTY PROPERTY TAX AND ELECTIONS

Pursuant to Minnesota Statutes, Section 505.021, Subd. 9, taxes payable in the year 20__ on the land hereinbefore described have been paid. Also, pursuant to Minnesota Statutes, Section 272.12, there are no delinquent taxes and transfer entered this _____ day of _____, 20__.

Denise Anderson
Property Tax & Elections Director

RICE COUNTY RECORDER

County Recorder, County of Rice, State of Minnesota
 I hereby certify that this plat of TIMBERFIELD APARTMENTS FIRST ADDITION was filed in the office of the County Recorder for public record on this _____ day of _____, 20__ at _____ o'clock ____M. and was duly filed as Document Number _____.

Judy Van Erp
Rice County Recorder

