

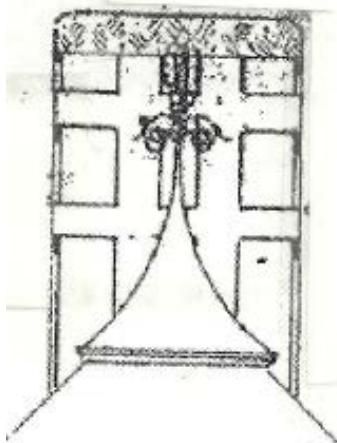
# 1888 Northfield Depot

*Save the Northfield Depot* presentation  
to the Heritage Preservation Commission  
June 10, 2021

Application for designation of the  
1888 Chicago, Milwaukee & St. Paul Railroad  
(the Milwaukee Road) Depot  
as a heritage preservation site

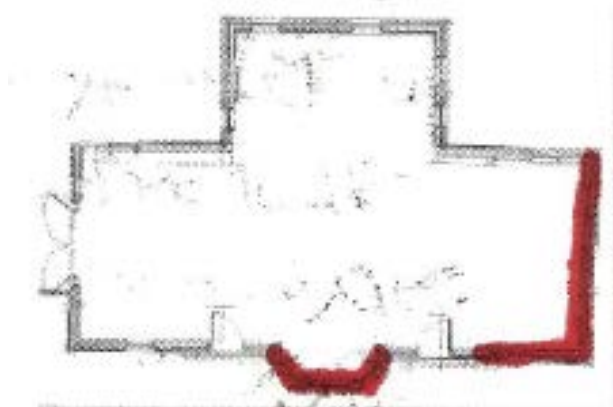


## EXTERIOR – West Wall





## EXTERIOR – South Wall



## EXTERIOR – East Wall



1910



2015



2016



2019



# EXTERIOR – North Wall





# INTERIOR – North Wall





## INTERIOR – West Wall



# INTERIOR – South Interior Wall





# INTERIOR – East Wall



# Questions?

