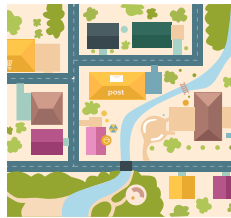


# Northfield Strategic Planning Questionnaire

Current status: **Closed** ([Change](#))

This questionnaire seeks opinions of City of Northfield employees and members of Northfield Boards and Commissions as part of the City's current strategic planning process. As such, it is limited to questions about community priorities and City service delivery. We understand that Board and Commission members may not feel informed enough to answer some of the service delivery questions. If so, please skip those questions.



Thank you for your assistance.

## 11 Question Survey

Q1 Are you:

<b>A</b> City Staff	38% (25)
<b>B</b> Member of a Board or Commission	62% (41)

Q2 How do you rate the overall quality of City services?

<b>A</b> Excellent	20% (13)
<b>B</b> More than satisfactory	29% (19)
<b>C</b> Satisfactory	40% (26)
<b>D</b> Less than satisfactory	5% (3)
<b>E</b> Poor	2% (1)
<b>F</b> Don't know	5% (3)

Q3 List one city service (if any) that you believe needs improvement:



Q4 How do you rate the overall quality of life in Northfield?

<b>A</b> Excellent	26% (17)
<b>B</b> More than satisfactory	54% (35)
<b>C</b> Satisfactory	15% (10)
<b>D</b> Less than satisfactory	3% (2)
<b>E</b> Poor	0%
<b>F</b> Don't know	2% (1)

Q5 List one quality of life issue (if any) that needs improvement:



Q6 Over the next three years, what are the 3 most important priorities for the City of Northfield?

<b>A</b> Economic Development (A Community that's Economically Thriving)	50% (33)
<b>B</b> Affordable Housing (A Community where Everyone Can Afford to Live)	65% (43)
<b>C</b> Infrastructure (A Community where Infrastructure Supports Its Objectives)	36% (24)
<b>D</b> Diversity, Equity, Inclusion (A Community that Welcomes Everyone)	47% (31)
<b>E</b> Operational Effectiveness (A Community with a Government that Works)	29% (19)
<b>F</b> Climate Change Impacts (A Community that's Resilient and Sustainable)	45% (30)
<b>G</b> OTHER	6% (4)

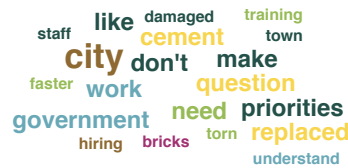
Q7 If you selected "OTHER" please explain.



Q8 Over the next three years, what is the greatest challenge to maintaining the current level of City service delivery?

A	Funding for Projects	42% (25)
B	Funding for Equipment	0%
C	Funding for Technology	8% (5)
D	Staffing Levels	33% (20)
E	OTHER	17% (10)

Q9 If you selected "OTHER" please explain.



Q10 How has the pandemic affected you?

A	Business Loss	14% (8)
B	Mental Health	55% (32)
C	Employment	21% (12)
D	Learning and development of students	33% (19)
E	Illness	0%
F	OTHER	29% (17)

Q11 If you selected "OTHER" please explain.

