

Hospital Memorial Garden Plan for Way Park

July 2020



Why a memorial garden in Way Park?

- Way Park was the site of the Northfield Hospital from 1939 until 2005.
- Friends of Way Park formed in 2005 to help guide the return of the land back to a park.
- In 2007, the City of Northfield commissioned a Master Plan that was approved by PRAB and the Northfield City Council.
- The Master Plan included a Hospital Memorial Garden on the south side of the park (2nd Street).





Why now?

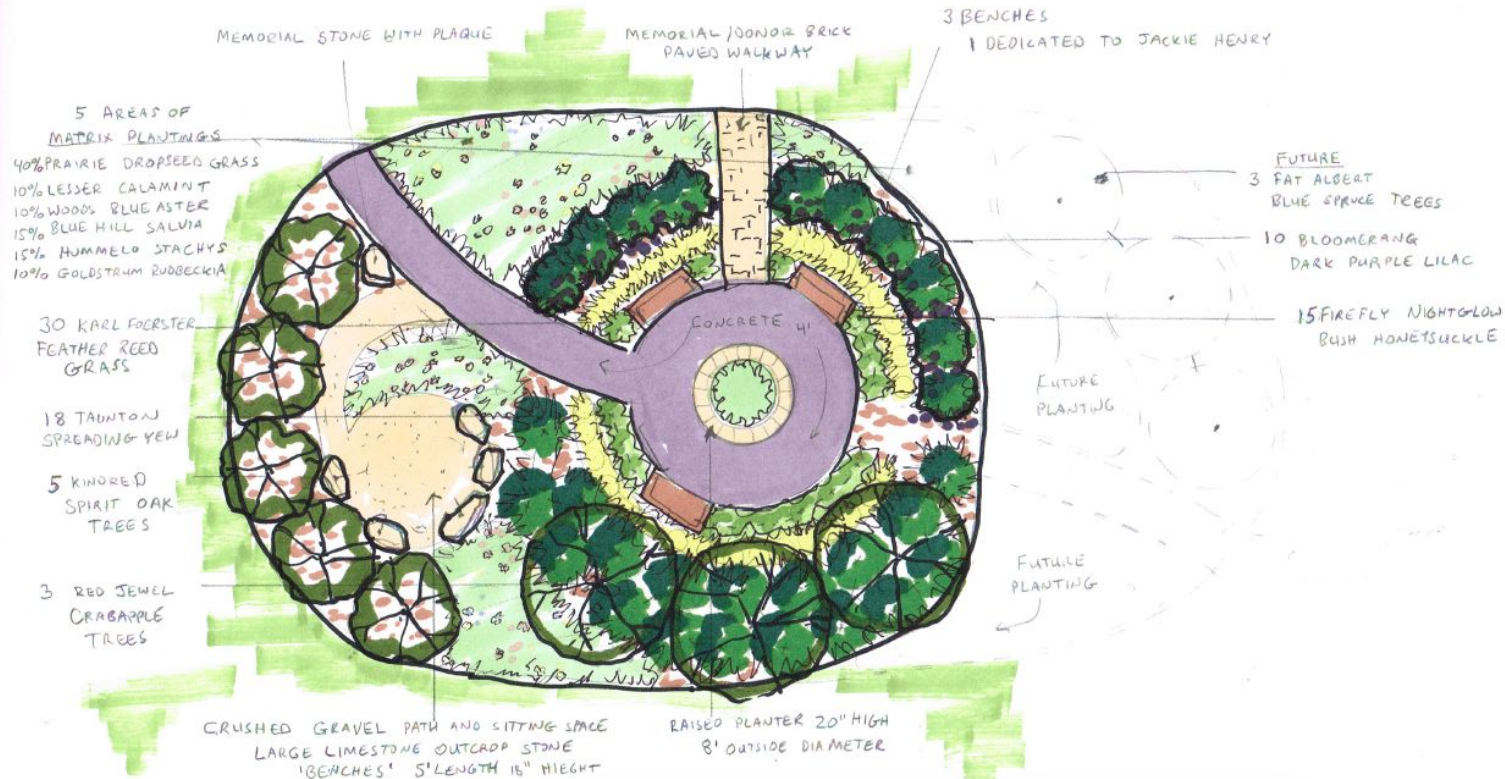
Friends of Way Park received a donation from a park neighbor last year. It was given to honor the memory of a neighbor who was born in the Hospital and died recently at her home adjacent to the park.

Much energy and attention has been paid to the north end of Way Park in recent years, and to amenities for young children and families. This garden will be accessible to all and provide a space for quiet contemplation.





WAY PARK - REFLECTION
700 FIRST ST NORTHFIELD GARDEN
PLANTING PLAN AND HARDSCAPE NOTES



MEMORIAL STONE WITH PLAQUE

MEMORIAL DONOR BRICK
PAVED WALKWAY

3 BENCHES

1 DEDICATED TO JACKIE HENRY

5 AREAS OF
MATRIX PLANTINGS

40% PRAIRIE DROPSEED GRASS
10% LESSER CALAMINT
10% WOODS BLUE ASTER
15% BLUE HILL SALVIA
15% HUMMEL STACHYS
10% GOLDSTRUM RUDBECKIA

30 KARL FOERSTER
FEATHER REED
GRASS

18 TAUNTON
SPREADING YEW

5 KINDRED
SPIRIT OAK
TREES

3 RED JEWEL
CRABAPPLE
TREES

FUTURE

3 FAT ALBERT
BLUE SPRUCE TREES

10 BLOOMERANG
DARK PURPLE LILAC

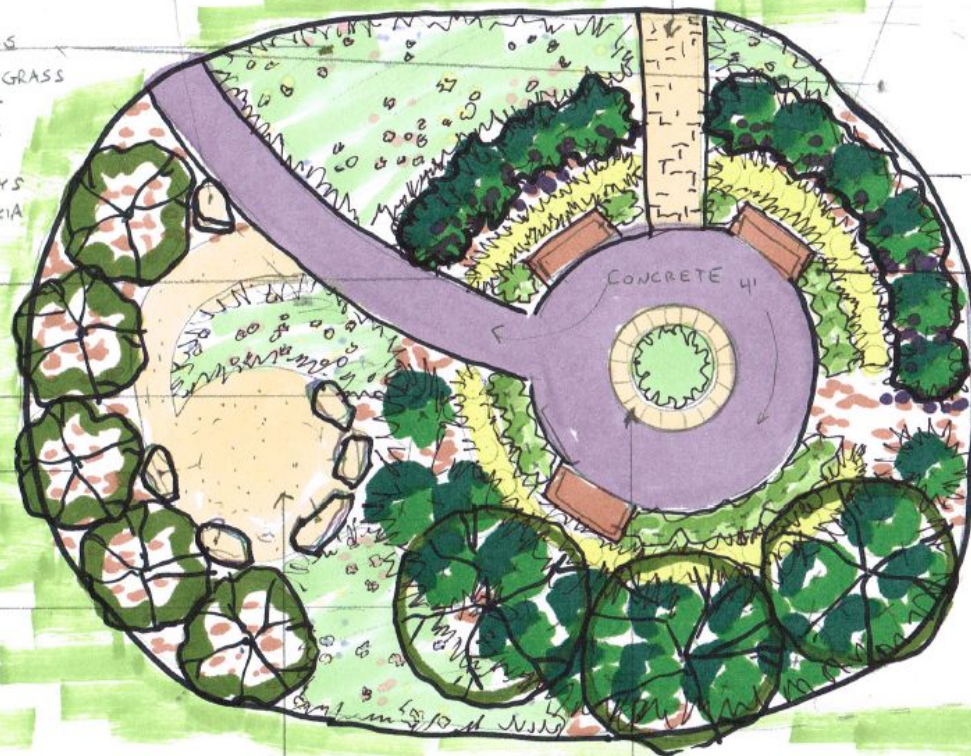
15 FIREFLY NIGHTGLOW
BUSH HONEYSUCKLE

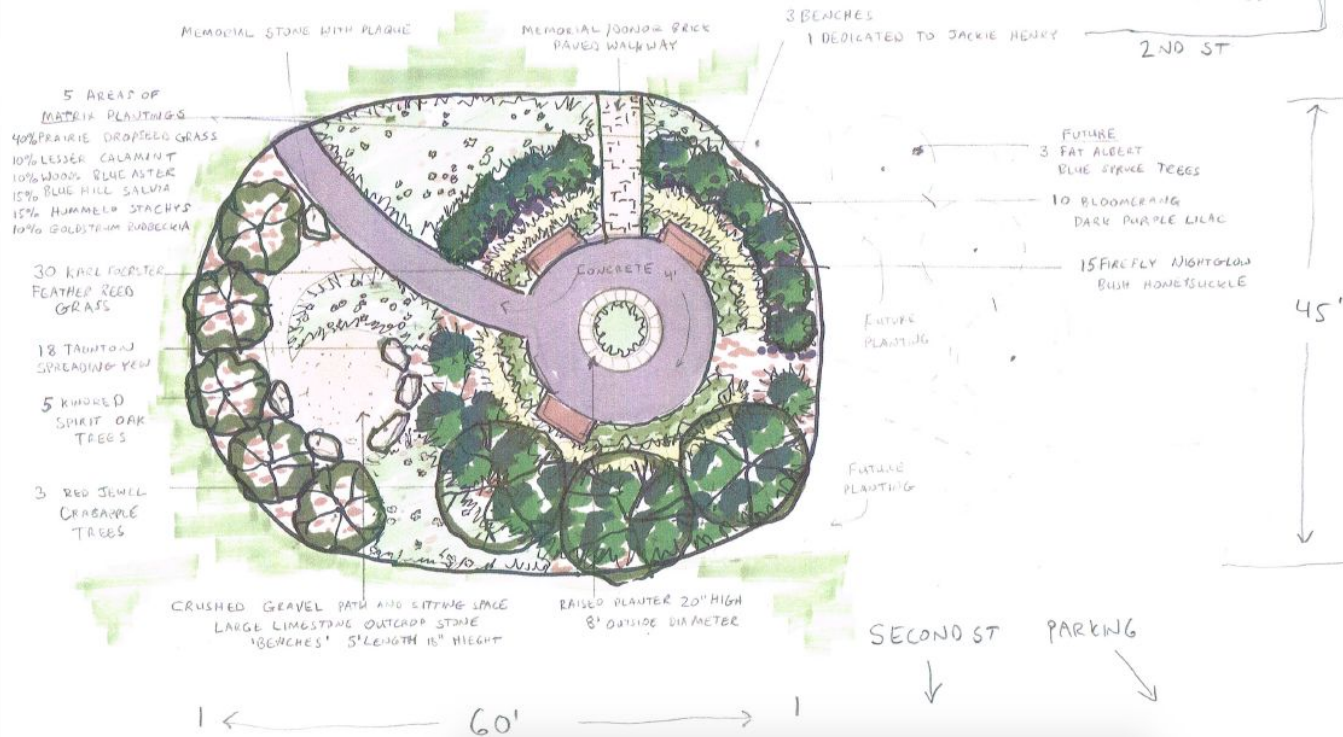
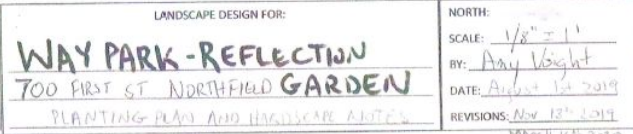
FUTURE
PLANTING

FUTURE
PLANTING

CRUSHED GRAVEL PATH AND SITTING SPACE
LARGE LIMESTONE OUTCROP STONE
'BENCHES' 5' LENGTH 15" HEIGHT

RAISED PLANTER 20" HIGH
8' OUTSIDE DIAMETER





Proposed Placement



Landscaping estimate

Description	Quantity	Total
PRELIMINARY ESTIMATE (revised 4-15-20) FOR REFLECTION GARDEN-WAY PARK		
Pre-Project Herbicide Application		210.00
LABOR- man hours- Prepare site for planting	5	350.00
MATERIALS:		525.00
10 yards Landscape Soil Mix		
LABOR- Installation of Materials Listed Below	4	280.00
MATERIALS:		2,976.00
Perennials- quart Pots (33 trays of 12)		
Prairie Dropseed Grass- quart pot (22 trays of 12)		
LABOR- Installation of Materials Listed Below	7	490.00
MATERIALS:		4,845.00
25 Deciduous Shrubs #5 pot		
18 Evergreen Shrubs #7 pot		
30 Karl Foerster Feather Reed Grass #1 pot		
LABOR- Installation of Materials Listed Below	8	560.00
MATERIAL: 8 Trees- shade (sample price \$535 each installed)	8	4,275.00
TREE PRICING RANGES FROM \$200-800 each installed depending on size		
MULCH AND INSTALLATION- Shredded HARDwood 18yds	18	2,267.00
Tools and Equipment	1.666	636.00
Mobilization, Transit, Load/Unload, Project Management and Site Cleanup	1.75	1,000.00
Does not include: Concrete Sidewalks (approx 600 sq ft), Brick Paver WalkWay (approx 60 sq ft) , 3 Benches, Raised Planter 8' Dia, Gravel path and sitting space (approx 200 sq ft) or 5 Large Limestone Outcroppings.		
Sales Tax and Rice County Transit		0.00
Please note this is only an estimate and has been calculated to the best of our abilities and understanding of the project. Refer to your contract for further details. DOWN PAYMENT AND SCHEDULING: A 25%(50% on projects \$4000 or less) down payment by cash or check secures your project on our schedule. No credit card.		Total \$18,414.00

Hardscaping estimate*

*This is likely to be reduced because we have since reduced the overall size of the garden.

Activity	Activity	Qty	Rate	Amount
Labor	Prep site for 600 sq ft concretre sidewalk	600	3.55	2,130.00
Concrete	SPour / Install 600 sq ft concrete sidewalk. (none color or stamped)	600	8.25	4,950.00
Labor	Prep site for 60 Sq ft paver walkway.	60	4.55	273.00
Pavers	SerInstall 60 Sq ft paver walkway. (New Holland pavers)	60	22.75	1,365.00
Labor	Install raised planter 8' diameter x 20" high	1	1,875.00	1,875.00
Labor	Prep site for 200 sq ft gravel path	200	3.55	710.00
Labor	Install a 200 sq ft gravel path	200	6.85	1,370.00
Sales	5 large limestone	5	365.00	1,825.00
Sales	benches - We are not able to provide a cost for benches due to no being familiar with the pricing at the moment.	1	0.00	0.00
Total:				\$14,498.00

Cost Estimates

Total Estimate = \$32,912

Friends of Way Park Contribution = \$25,000

Northfield Hospital Contribution?

City of Northfield Contribution?