



2020 Mill and Overlay Project

Generalized Feedback from the Neighborhood Meeting

★ Popular Topics

- Significant street ponding at many locations. Causes slippery conditions in the winter.
- Bumpouts were controversial with noted safety improvements, although majority of residents are opposed
- Bike and pedestrian concerns
- Many concerns relating to Carleton College – specifically heavy vehicles, parking options, and construction projects
- Significant commercial traffic
- Areas of erosion along boulevards

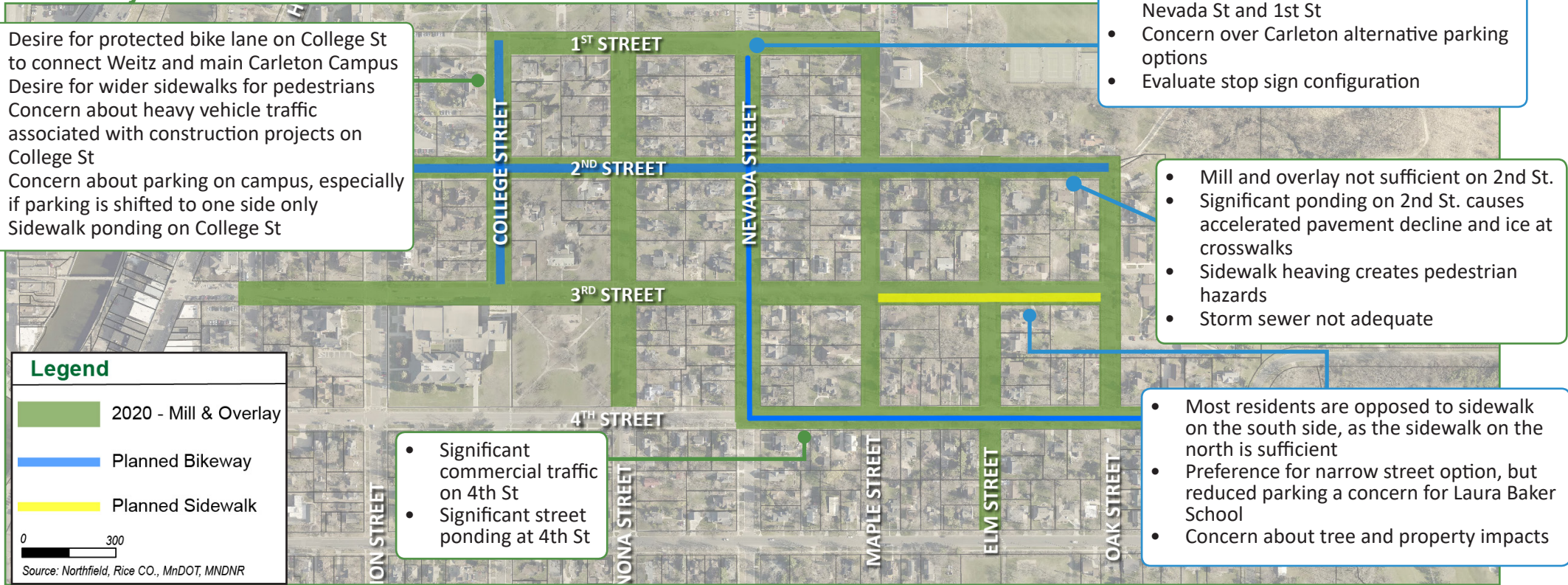
💬 General Comments

- Wide, undifferentiated streets encourage people to drive too fast.
- Minimal bike use – do not desire bike lanes.
- Feasibility study should address many improvements beyond mill and overlay.
- Desire to keep trees along street.
- On streets with sidewalks on one side, cost of sidewalk maintenance should be shared by properties on both sides.

📍 Site-Specific Comments

North Project Area

- Desire for protected bike lane on College St to connect Weitz and main Carleton Campus
- Desire for wider sidewalks for pedestrians
- Concern about heavy vehicle traffic associated with construction projects on College St
- Concern about parking on campus, especially if parking is shifted to one side only
- Sidewalk ponding on College St



Neighborhood Meeting
October 2, 2019
5:30 p.m.
City Hall Council Chambers



About 35 Attendees



For more info, visit
www.ci.northfield.mn.us/1313/2020-Mill-and-Overlay-Project

South Project Area

