

KNOW ALL MEN BY THESE PRESENTS: That Friends of Village on the Cannon, LLC, a Minnesota limited liability company, owner and proprietor of the following described property situated in the County of Rice and State of Minnesota, to wit:

Lot 1, Block 1, Collegeville Second Addition, according to the plat and survey thereof on file and of record in the office of the County Recorder in and for Rice County, Minnesota; excepting therefrom the Plat of Common Interest Community No. 50, a Condominium, Village on the Cannon, in the City of Northfield, Rice County, Minnesota, and also excepting therefrom the Plat of Common Interest Community No. 50, a Condominium, Village on the Cannon, First Supplemental, in the City of Northfield, Rice County, Minnesota.

Have caused the same to be surveyed and platted as MILLSTREAM COMMONS and do hereby dedicate to the public for public use the drainage and utility easements as created by this plat.

In witness whereof said Friends of Village on the Cannon LLC., a Minnesota limited liability company, has caused these presents to be signed by its proper officers this ____ day of _____, 20____.

Friends of Village on the Cannon LLC.

By _____, Secretary
Robert Bonner

STATE OF MINNESOTA
COUNTY OF _____

This instrument was acknowledged before me on _____ by _____
Secretary of Friends of Village on the Cannon LLC. on behalf of the company.

Notary Public, _____

I Thomas J. O'Meara do hereby certify that this plat was prepared by me or under my direct supervision; that I am a duly Licensed Land Surveyor in the State of Minnesota; that this plat is a correct representation of the boundary survey; that all mathematical data and labels are correctly designated on this plat; that all monuments depicted on this plat have been, or will be correctly set within one year; that all water boundaries and wetlands, as defined in Minnesota Statutes, Section 505.01, Subd. 3, as of the date of this certificate are shown and labeled on this plat; and all public ways are shown and labeled on this plat.

Dated this ____ day of _____, 20____.

Thomas J. O'Meara, Licensed Land Surveyor
Minnesota License No. 46167

STATE OF MINNESOTA
COUNTY OF _____

This instrument was acknowledged before me on _____, 20____, by Thomas J. O'Meara.

Notary Public, _____

My Commission Expires on _____

PLANNING COMMISSION

Approved by the Planning Commission of the City of Northfield, Minnesota, at a regular meeting thereof, on the ____ day of _____, 20____.

Chairperson

CITY COUNCIL

We do hereby certify that on the ____ day of _____, 20____, the City Council of Northfield, Minnesota approved this plat by resolution and is in compliance with the provisions of Minnesota Statutes Section 505.03, Subdivision 2.

Mayor

Clerk

COUNTY SURVEYOR

I hereby certify that in accordance with Minnesota Statutes, Section 505.021, Subd. 11, this plat has been reviewed and approved this ____ day of _____, 20____.

Michael A. Fangman
Rice County Surveyor

COUNTY AUDITOR-TREASURER

I do hereby certify that the taxes for the year 20____ for the land described on this plat as MILLSTREAM COMMONS have been paid and no delinquent taxes due and transfer entered on this ____ day of _____, 20____.

County Auditor-Treasurer, Rice County, Minnesota

COUNTY RECORDER

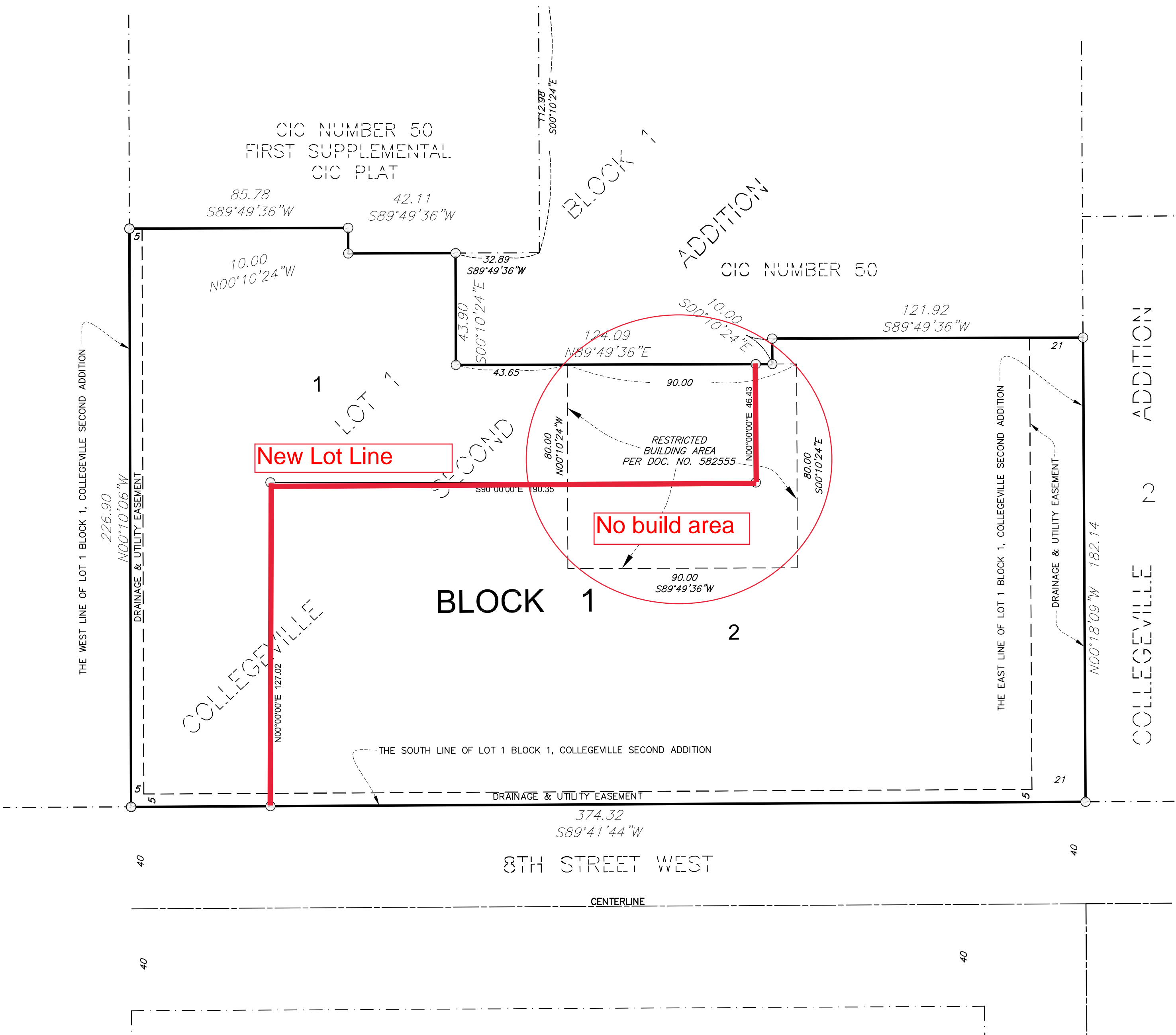
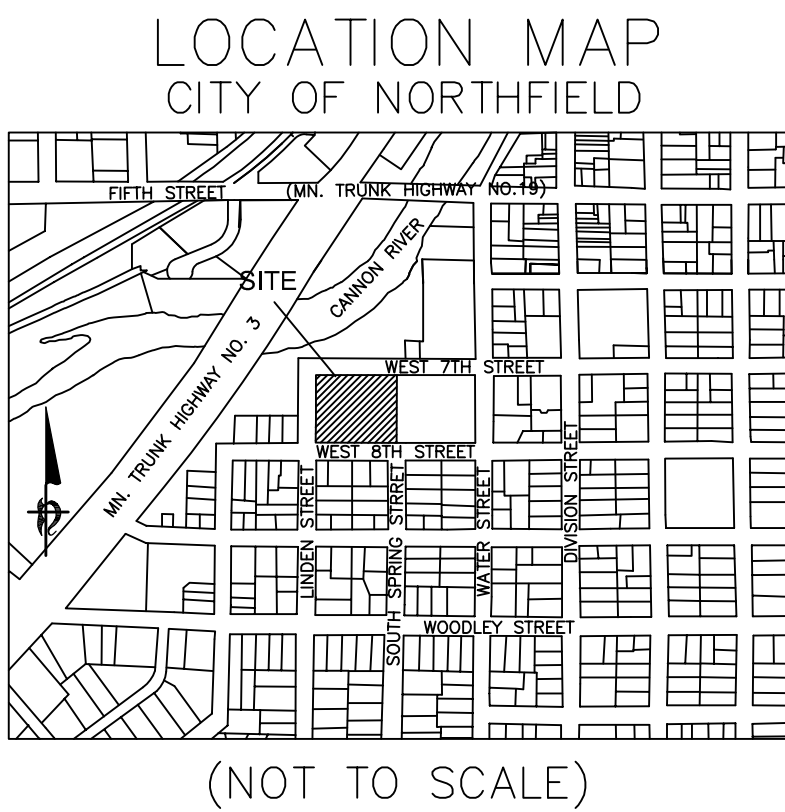
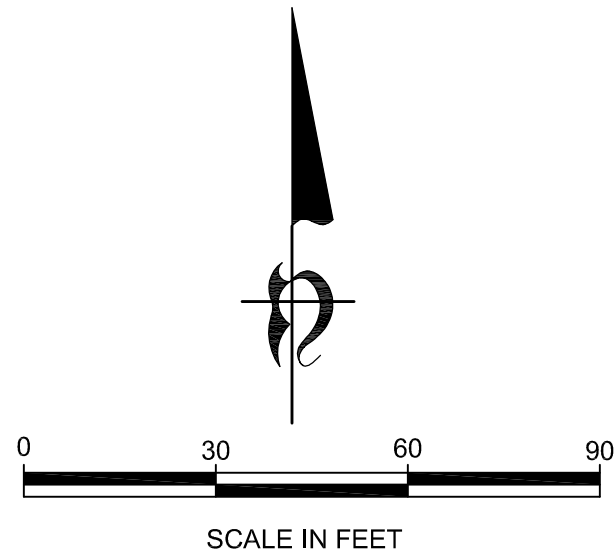
I hereby certify that this instrument was filed in the office of the County Recorder for record this ____ day of _____, 20____, at ____ o'clock ____ M., and was duly recorded as Document No. _____.

County Recorder, Rice County, Minnesota

MILLSTREAM COMMONS

THE SOUTHERLY LINE OF LOT 1, BLOCK 1, COLLEGEVILLE SECOND ADDITION, IS ASSUMED TO HAVE A BEARING OF N89°41'44"E.

- DENOTES 1/8 INCH BY 14 INCH IRON PIPE MONUMENT SET AND MARKED BY LICENSE NUMBER 46167, UNLESS OTHERWISE SHOWN.
- DENOTES IRON PIPE MONUMENT FOUND UNLESS OTHERWISE SHOWN.
- ⦿ DENOTES COUNTY MONUMENT FOUND UNLESS OTHERWISE SHOWN.



Bohlen
Surveying & Associates