

City of Northfield
Public Works
Snow Plowing
April 9, 2019



Snow and Ice Control Policy

- Adopted 9/18/2018
- City Streets plowed curb-to-curb within 12 hours after cessation of a snow event
- Downtown snow removal within 24 hours after completion of plowing operation
- Trails near schools and City facilities cleared within 12 hours of cessation of a snow event. Remaining trails cleared within 48-72 hours



Snow and Ice Control Policy

- Winter Parking Regulations
 - November 15 to March 15
 - 2am to 6am no on-street parking
- Snow Emergency declared after 2 inches of snowfall
 - No on-street parking until streets are plowed curb to curb



Snow Removal Equipment

- 4 Dump trucks with front plows and wings
- 3 Front-end Loaders with front plows and wings
- Motor grader
- 2 Pick-ups with plows
- Sidewalk/Trail equipment – Loader, 2 tractors, skidsteer, toolcat, 2 sidewalk tractors
- Loader mounted snow blower



Snow Removal Personnel

- 6 Street and Park Employees
- 1 Mechanic
- 2 Utilities Employees



Snow Removal Numbers

- 87 Center lane miles
- 126 Cul-de-sacs/dead-ends
- 31 miles of trails/sidewalks
- 2.7 Center lane miles of Downtown snow removal

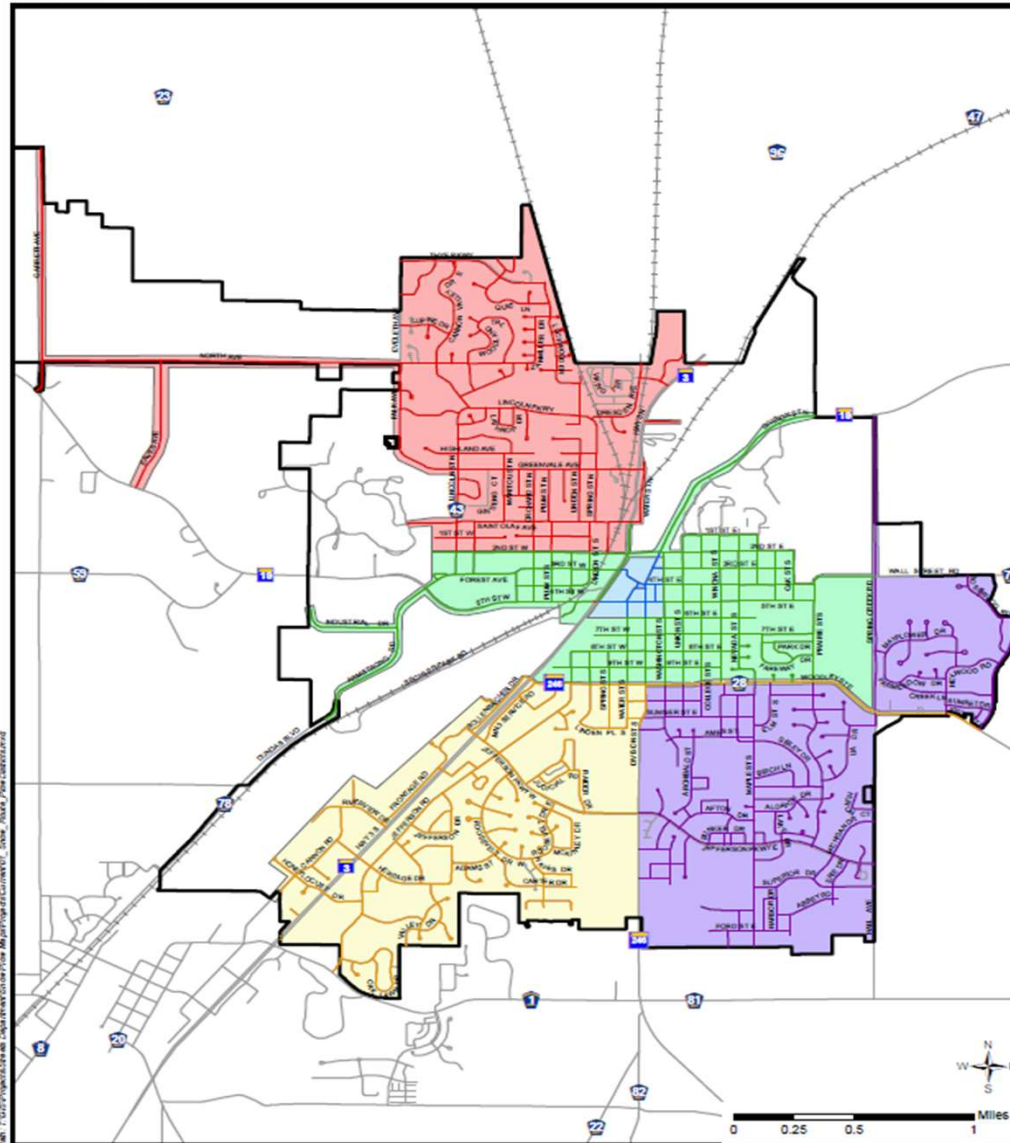


Snow Plow Districts

Plowing Districts
 A B C D E

City Of
Northfield
 Minnesota

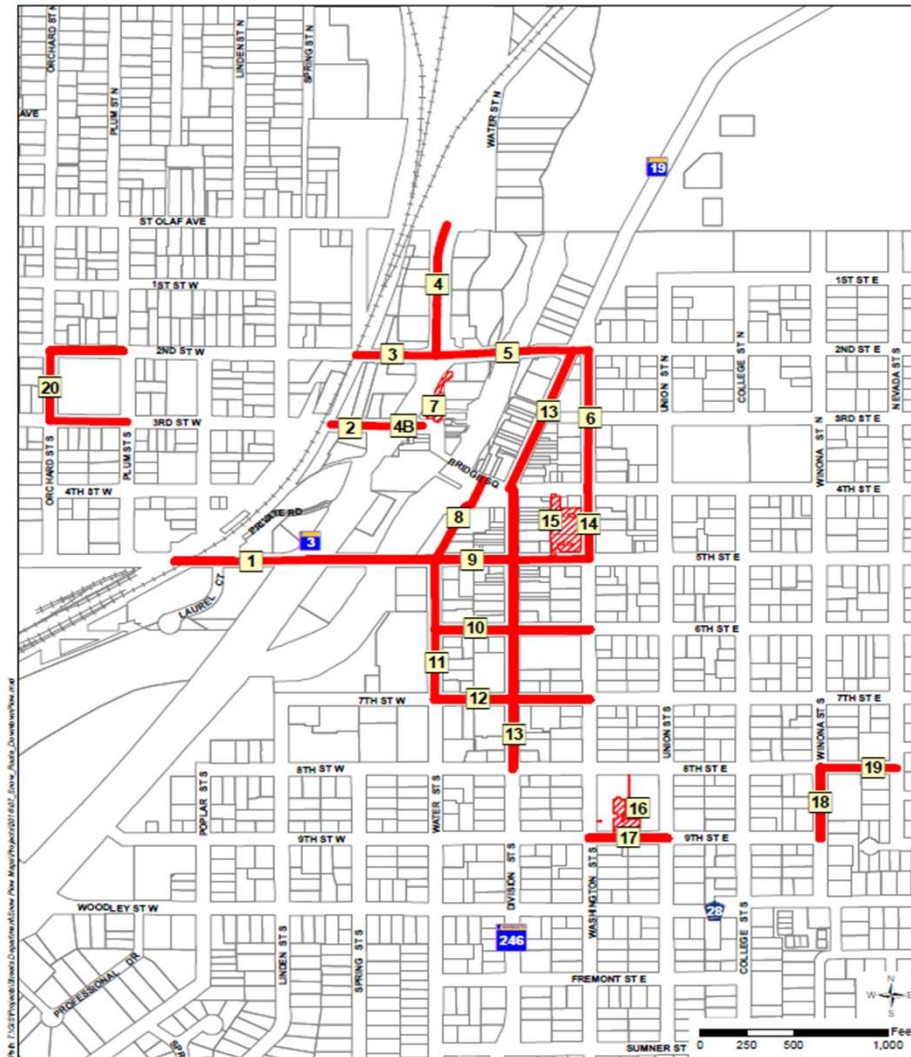
Updated: 10/22/2018



Downtown Snow Removal

- Plow Routes
- Parking Lots

City of
Northfield
Minnesota
Updated: 10/27/2017



Downtown Walk Plowing Route

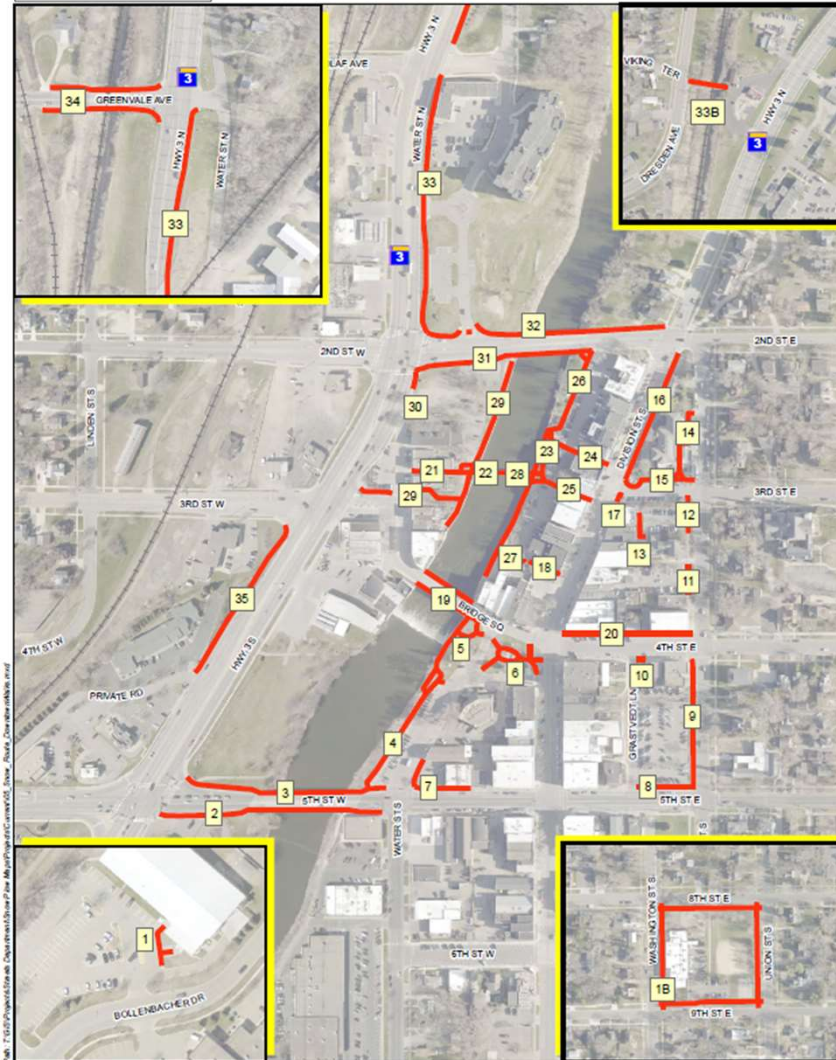
ANY PRIVATE WALK THAT IS
DRIVEN ON TO GAIN ACCESS
TO A CITY WALK MUST BE
SWEEPED OR BLOWN

Routes



0 125 250 500 Feet

Updated: 10/26/2018



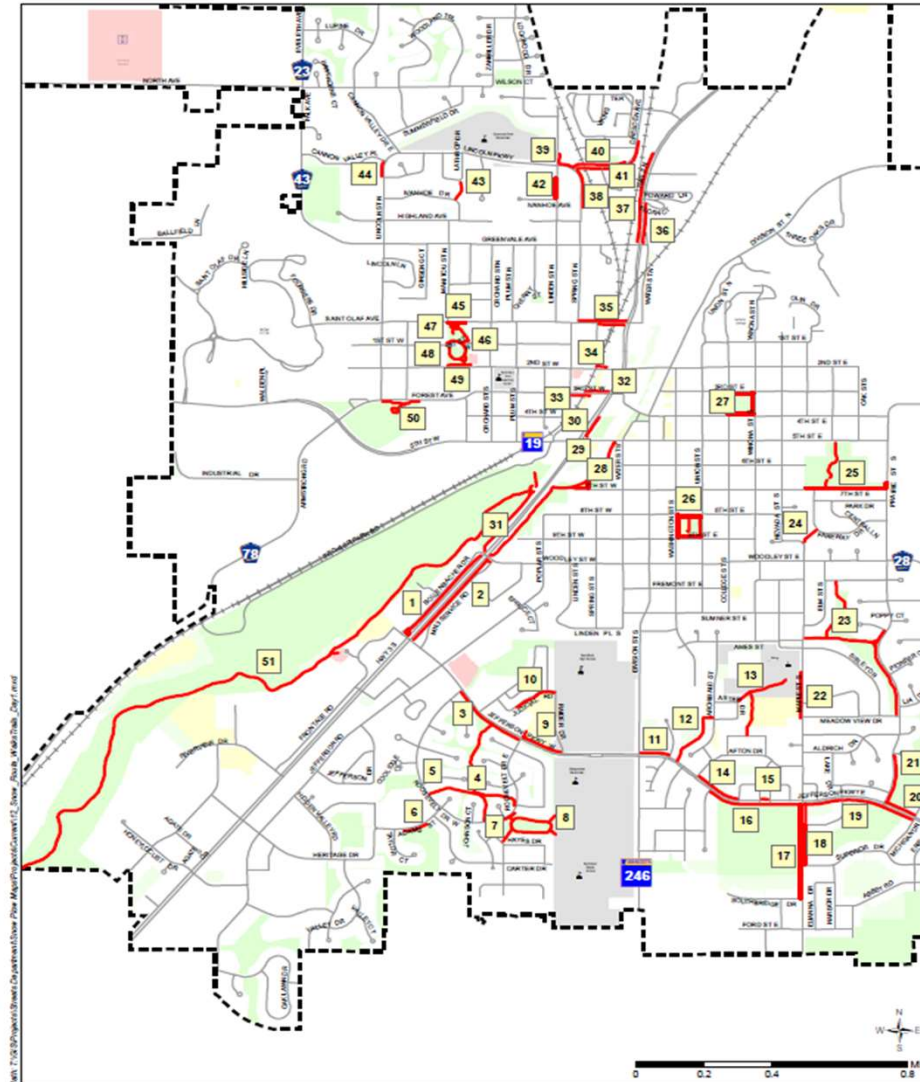
Sidewalk & Path Plowing Route



Updated: 10/29/2018

Day #1

ANY PRIVATE WALK THAT IS
DRIVEN ON TO GAIN ACCESS
TO A CITY WALK MUST BE
SWEEPED OR BLOWN



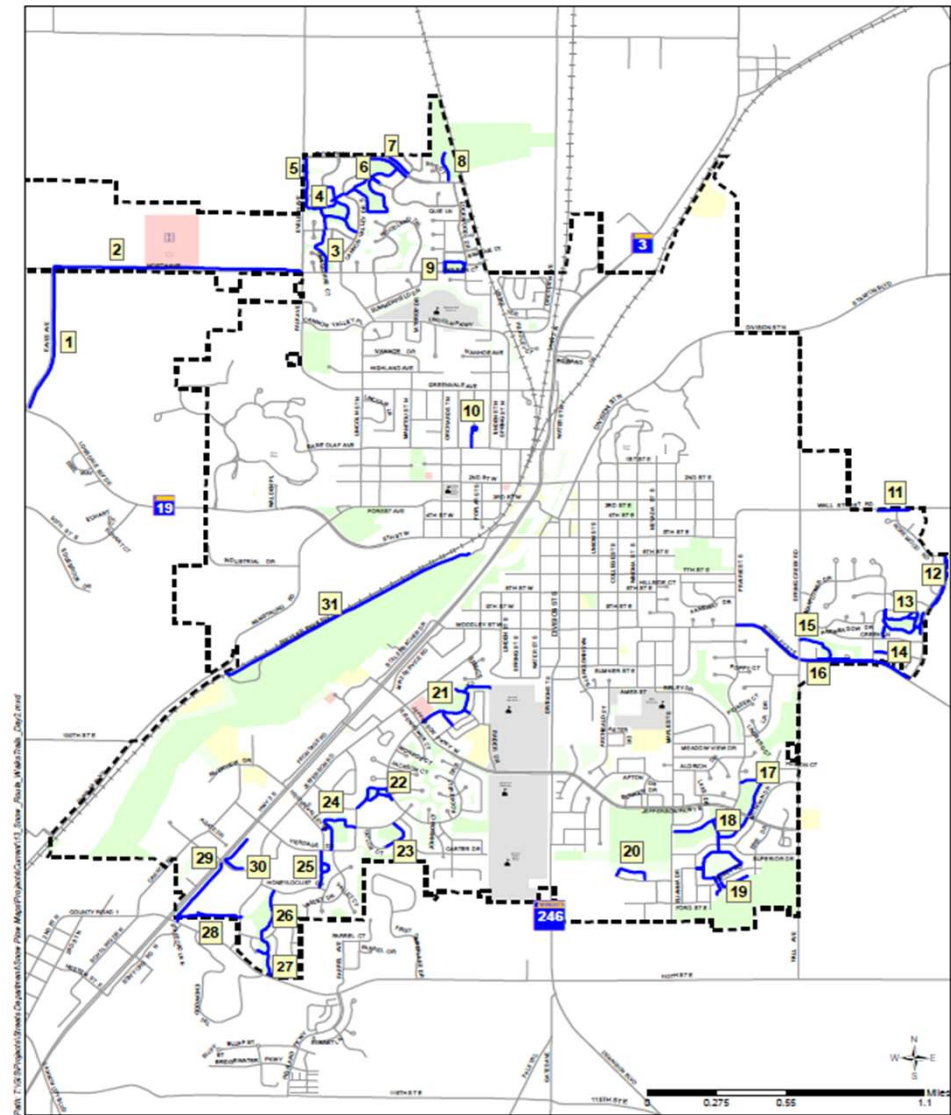
Path: T:\GIS\Projects\Sidewalk Plowing\Map\PlowingRoute12_SidewalkWalkTrail_2017.mxd

ANY PRIVATE WALK THAT IS
DRIVEN ON TO GAIN ACCESS
TO A CITY WALK MUST BE
SWEEPED OR BLOWN


Day #2



Updated: 10/29/2018



Example Snow Events

- Snow begins in the morning ends at 10pm
 - Crews plow throughout the workday until about 6pm
 - Roads that were plowed early in the day are snow covered again
 - Crews return to plow at 3am and plow all streets curb to curb (10-12 hours)
 - 4 staff return at midnight to start downtown snow removal
 - Snow begins 10pm and ends 9am
 - 2 staff in around 4am plowing mains
 - Full plow 9am to 9pm
 - No staff available to do downtown snow removal at midnight
 - Staff would be in the following midnight to remove downtown snow
- 

Next Steps

- Polco Online survey provided to public
- Survey closes end of April
- Staff will review feedback from survey and share results with Council



Questions/Discussion

