

Economic Development Riverfront Enhancement

May 8, 2018

City Council Work Session Presentation

City of Northfield



Strategic Plan (2018-2020)

Economic Development ★

A Community That's Economically Thriving

Affordable Housing

A Community Where Everyone Can Afford to Live

Infrastructure

A Community Where Infrastructure Supports Its Objectives

Diversity, Equity & Inclusion

A Community that Welcomes Everyone

Operational Effectiveness

A Community with a Government that Works

Climate Change Impacts

A Community that's Resilient and Sustainable



Strategic Plan (2018-2020)

Economic Development ★

A Community That's Economically Thriving

Strategic Initiative:

f) Riverfront Expansion Plan.

Enhance the asset of the Cannon River as a unique sense of place in an effort to strengthen downtown retail and visitors to Northfield.



Riverfront Expansion Plan

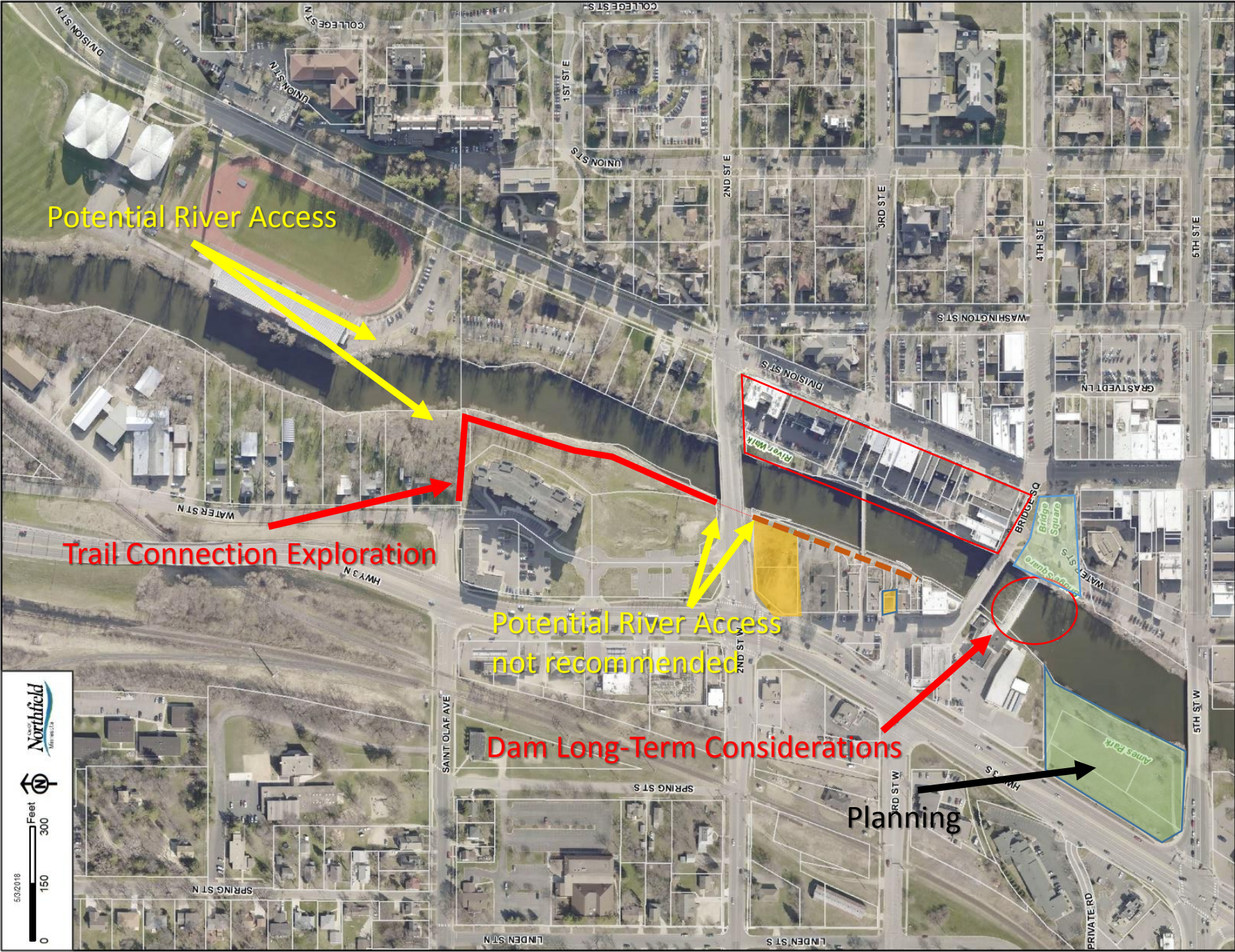
- *Economic Development Outcomes:*

- *Expanded commercial tax base*
- *Enhanced tourism*
- *Expanded downtown*

Other Strategic Plan Relevant Areas:

- *Climate Change Impacts (stormwater management)*
 - *Housing (potentially related to development opportunities)*
- 

Cannon
River
Corridor
Aerial 1

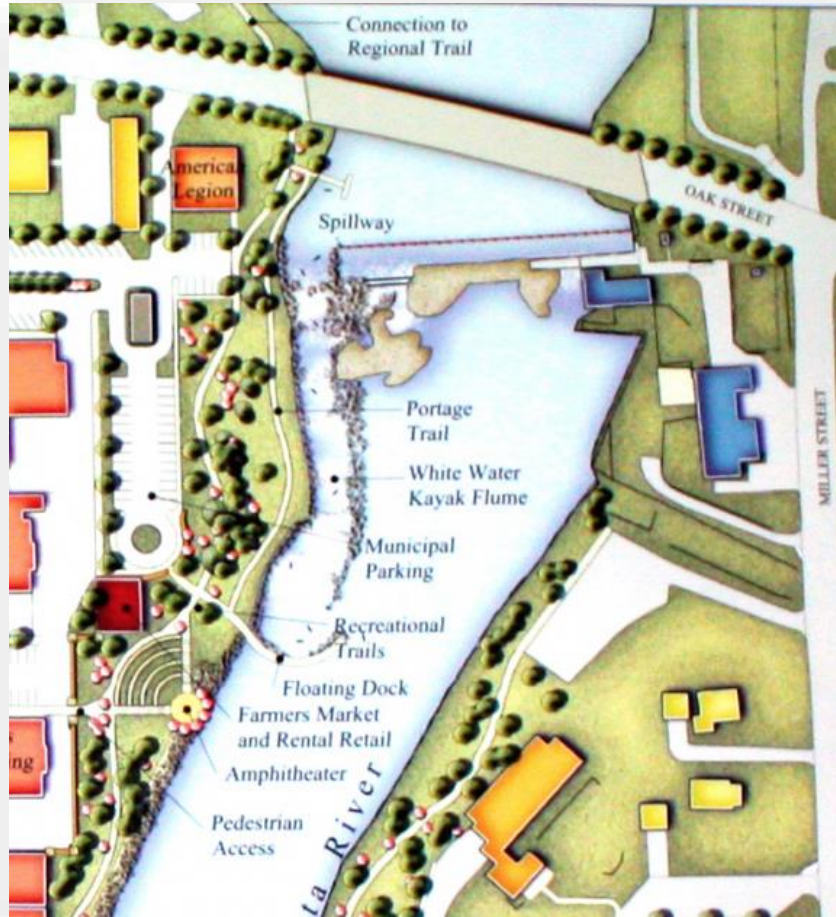


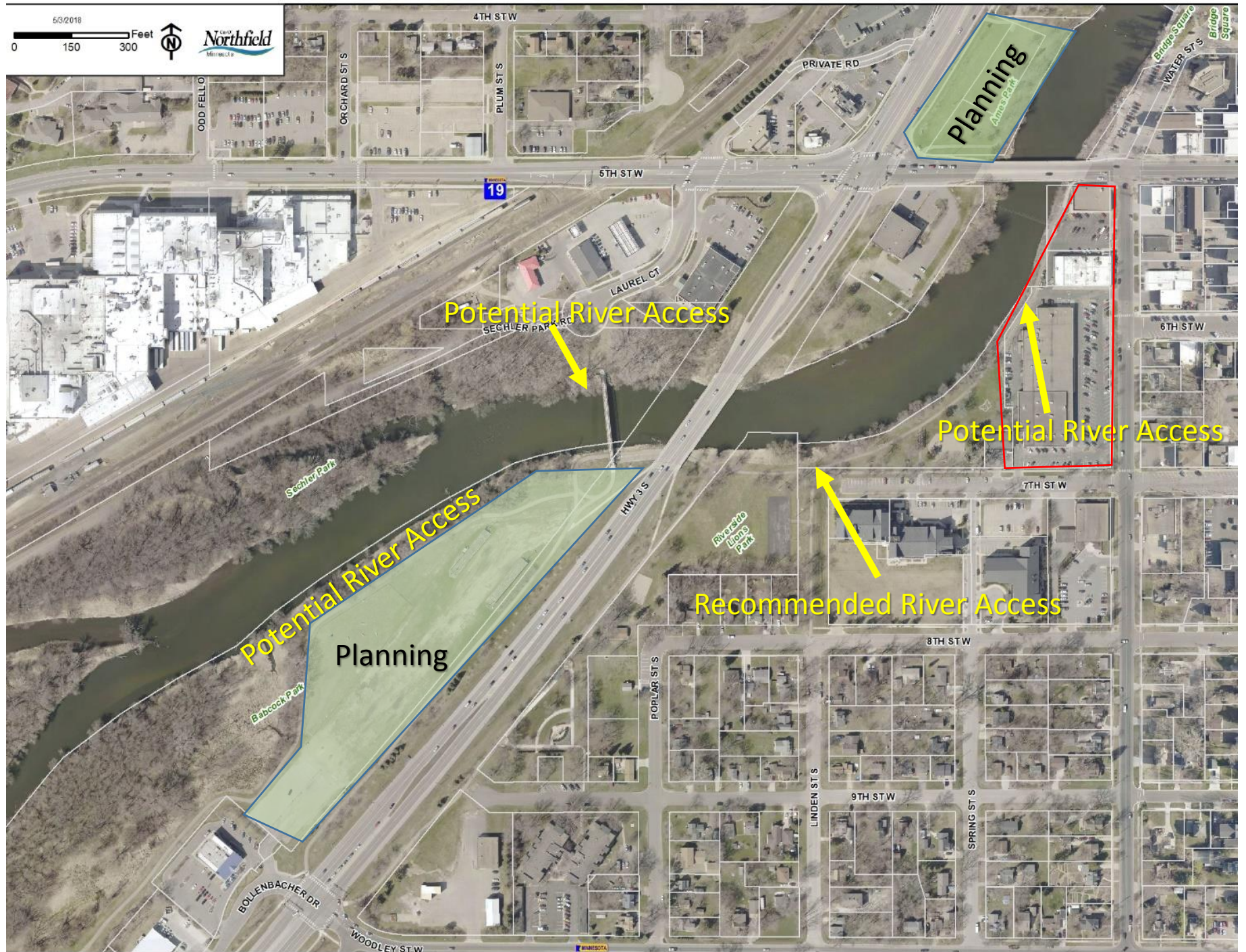
Riverfront Expansion Plan *underpass concept*



Riverfront Expansion Plan

Dam Exploration



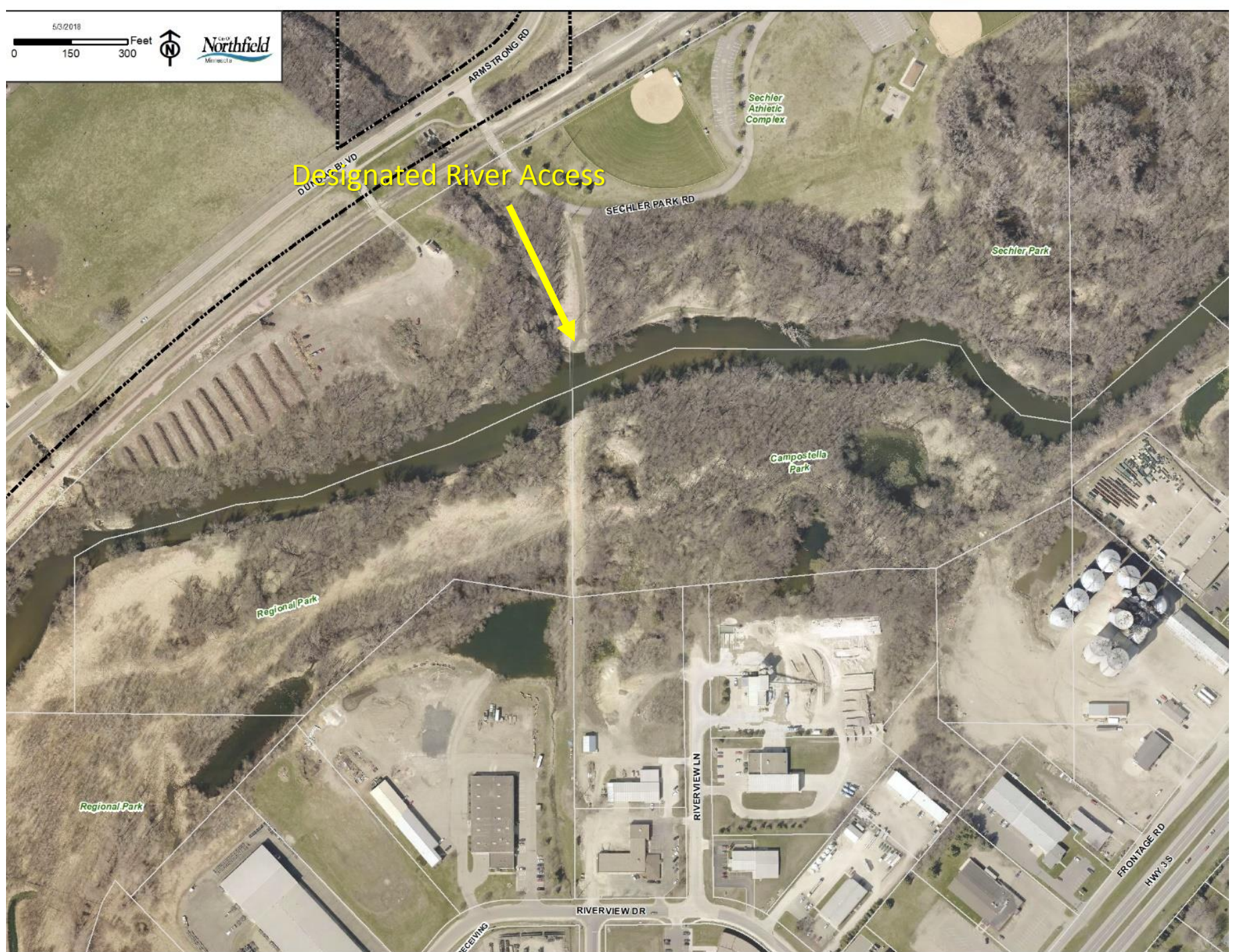


Cannon River
Corridor
Aerial 2

Cannon
River
Corridor
Aerial 3



Cannon
River
Corridor
Aerial 4



Cannon
River
Corridor
Aerial 5



Cannon
River
Corridor
Aerial 6



Riverfront Expansion Plan

- Next Steps:
 - Parks and Open Space Trail Plan Update
 - Park Board/Planning Commission
 - Review studies existing
 - River Access Points – thoughts?
 - Trail Extension behind hotel & condo – thoughts?
 - Future – possible small area plan for Ames Park, Babcock Park, Dam, “river trail”
 - EDA Strategic Plan (site specific project assistance)
 - Increasing tourism on EDA Strategic Initiative (riverfront events)
 - Key partners: DNR, MnDOT, Xcel Energy, Northfield Roundtable, NDDC, Chamber of Commerce
- 