

Fire Station Renovation and Improvement

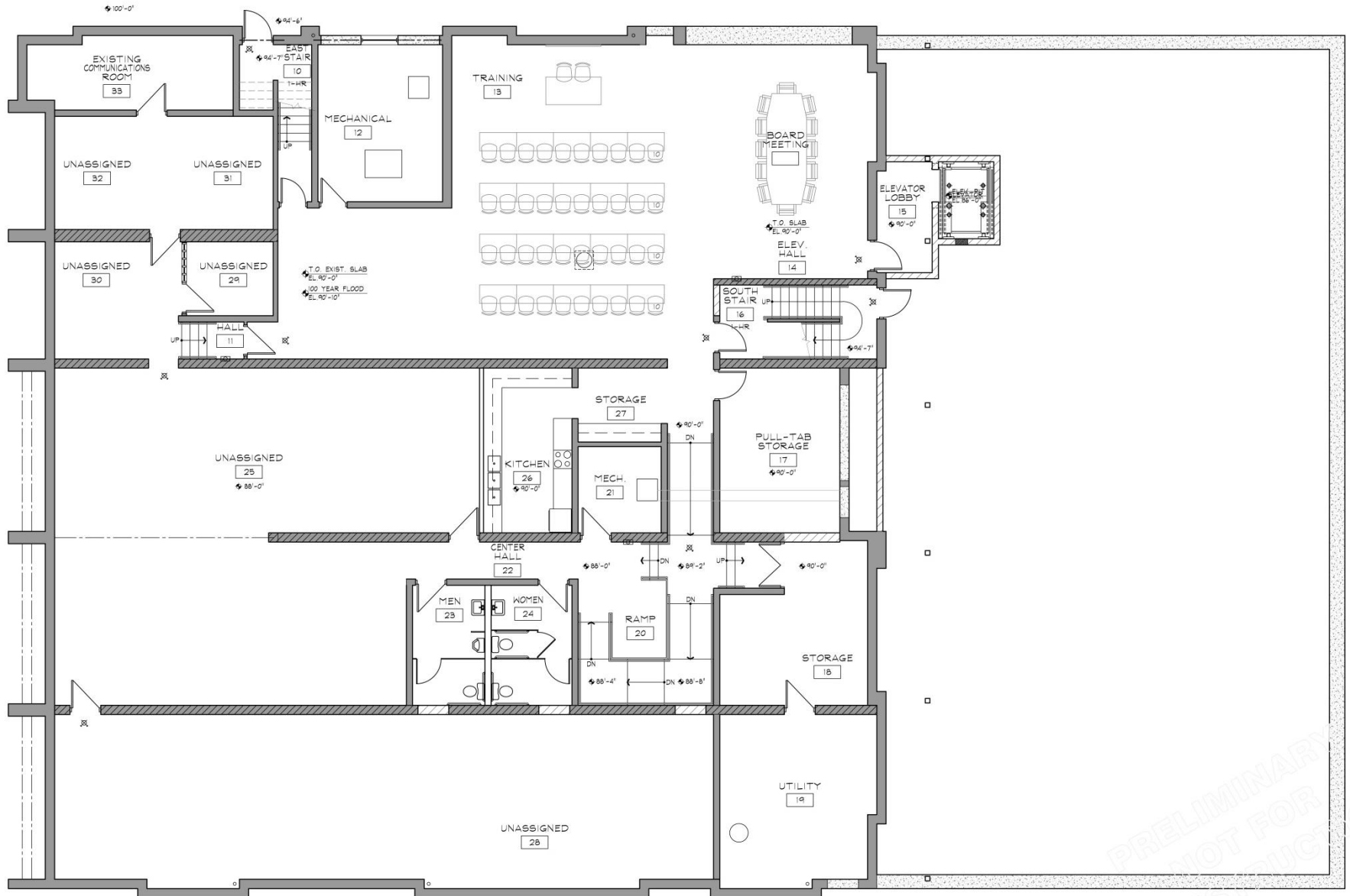
Consider Approving Plans and Specifications and Authorizing Bids



Fire Station Renovation & Improvement



Lower Floor Plan



Main Floor Plan

This detailed floor plan illustrates the layout of a fire station, divided into interior building spaces and an exterior vehicle bay area.

Interior Building Spaces:

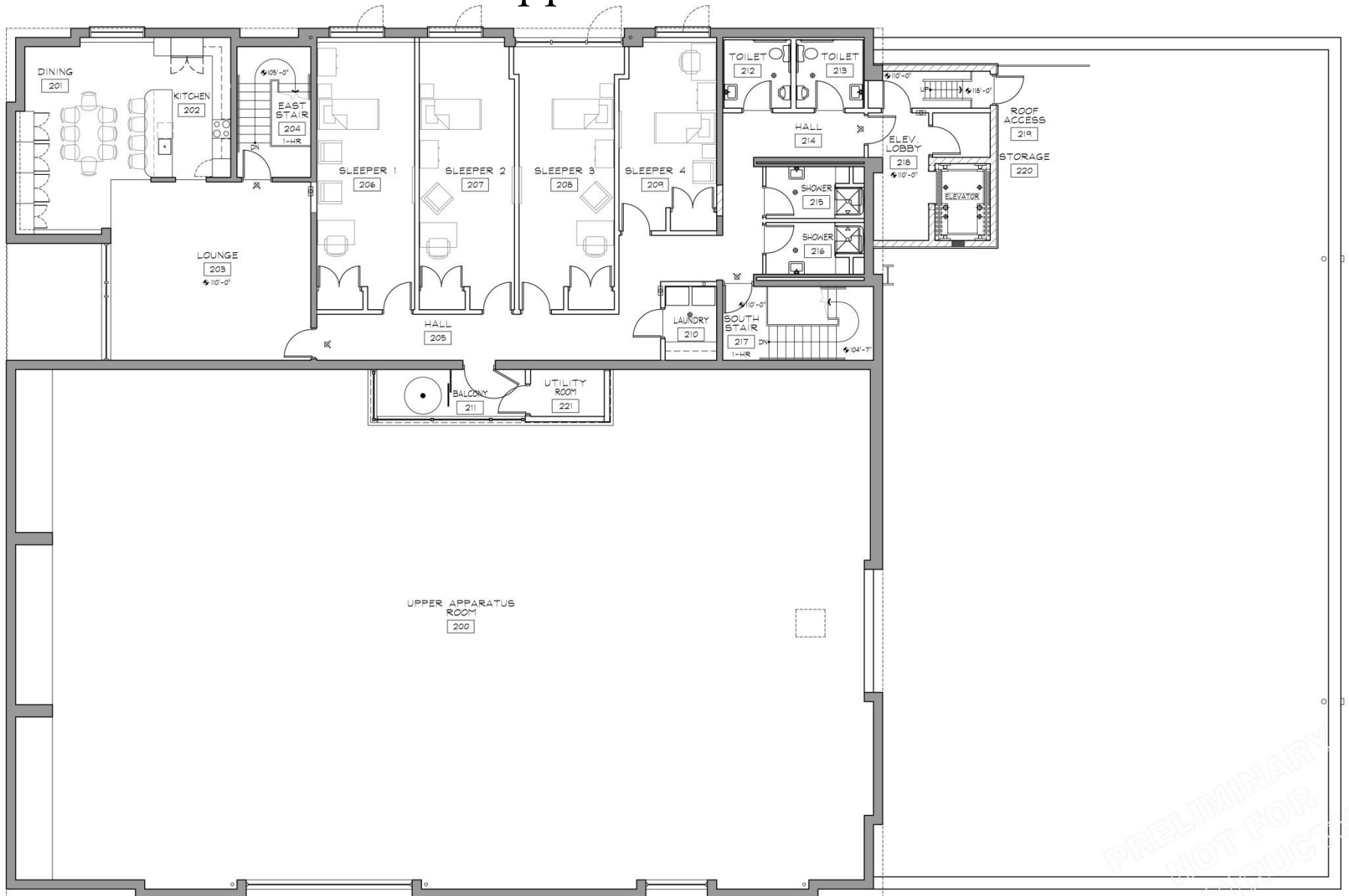
- Offices:** Chief's Office (112), Asst. Chief's Office (108), Open Office (109, marked "NO WORK"), and a Staff Office (105).
- Public Areas:** Public Foyer (101), Vest (100), Existing Men (102), and Existing Women (103) restrooms.
- Support Spaces:** Records (106), Office (110), Air Compressor/Scuba (111), Jan. (114), and ELEV. EQUI. (115A).
- Staircases:** East Stair (104) and South Stair (116).
- Hallways:** Hall (107), ELEV. HALL (113), and ELEV. LOBBY (115).
- Other:** TOILET (51), LULA LIFT, and various utility areas.

Exterior Vehicle Bay Area:

- Apparatus Room (120):** Contains a Rescue Squad Heavy Rescue Truck (8x11), a City Pumper (8x17), and a City Ladder Pumper (8x18).
- Added Apparatus Room (50):** Contains a Rural Tanker (8x27), a Rural Tanker (8x28.5), a Rural Tanker (8x27), and a Rural Tanker (8x27).
- Other Vehicles:** A Dive Trailer (8x18) and a Rescue (8x27) are also shown.

The plan includes numerous dimensions for rooms and vehicle bays, as well as a north arrow in the top left corner.

Upper Floor Plan



Financial Considerations

- General Obligation Capital Improvement Bonds
 - \$4 Million Fire Facility project cost estimate
 - Leased by NAFRS Joint Powers
 - NAFRS to cover construction period interest in 2018
 - 20 year amortization requested
 - 3.20% interest cost estimate)
 - \$226,130 is projected as average annual Northfield lease payment
 - Impacts 2019 through 2038 levies



Staff Recommendation

- .



Questions or Comments.

