

# Northfield's Climate Action Plan

What board members and commissioners need  
to know

# City of Northfield Strategic Priority #6

“A Community that’s Resilient and Sustainable”

Desired Outcomes:

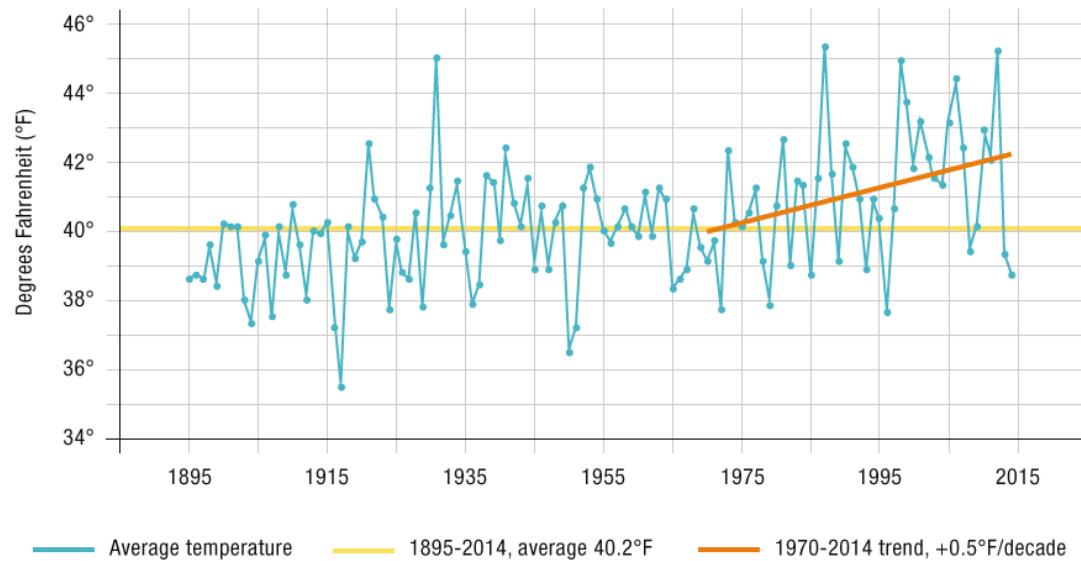
- A clear vision for climate action
- An economy resilient to energy and environment impacts
- Reduced carbon emissions

Action: Develop a Climate Action Plan

HOW WILL CLIMATE CHANGE  
AFFECT NORTHFIELD?

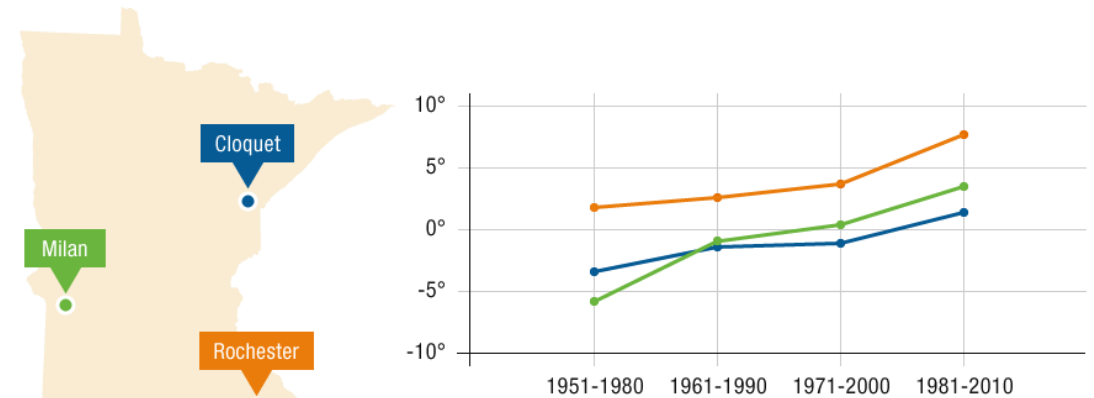
# Local Impacts: Minnesota is changing: Warmer winters, hotter summers, and

Minnesota's average annual temperature 1895-2014

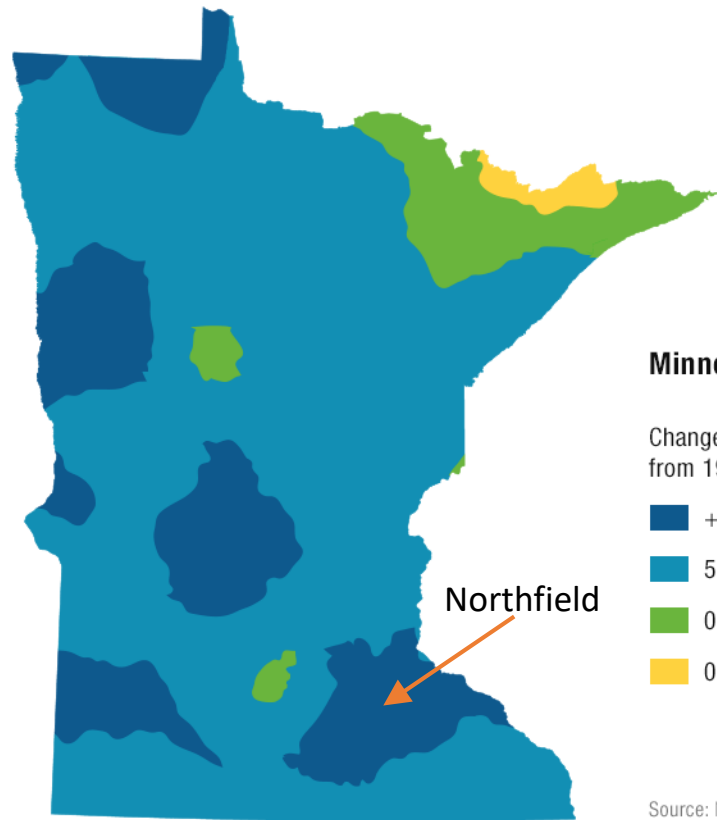


Source: National Climatic Data Center

Average minimum temperature in January for three Minnesota cities



# More and heavier rains



## Minnesota getting more rain

Change in average rainfall  
from 1901-1960 to 1991-2012

- +15% Increase
- 5-15% Increase
- 0-5% Increase
- 0-5% Decrease

Source: National Climate Assessment

## Timeline of Minnesota's historic mega-rain events 1866-2014



# Specific threats

- Floods
- Tornadoes
- Tick-borne diseases
- Protecting water quality
- Changing urban forest
- More or different invasive species
- Increased energy use in summer

**Tornado reported as wind and hail  
rip through central Minnesota**

-- GoMN March 7, 2017

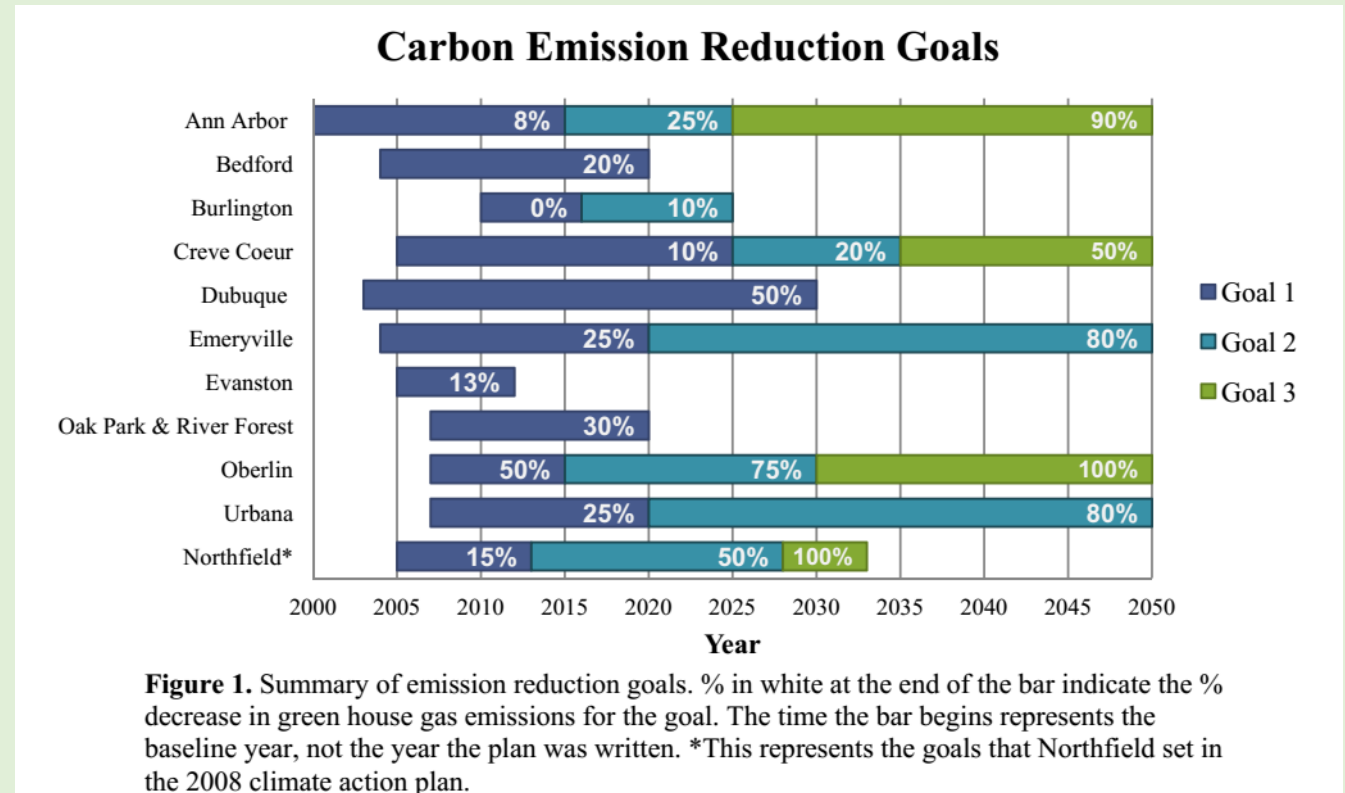
**Lyme-bearing tick species' expansion  
is especially pronounced in Minnesota**

--MinnPost 1/21/2016

# CLIMATE ACTION PLANNING: What can we do about it?

# What does Climate Action Planning DO?

- SETS GOALS





# Plus: Comprehensive Environmental Planning

- Urban forest and parks
- Water systems
- Food systems
- Transportation
- Housing
- Etc.



# HOW IS THIS RELEVANT TO OUR WORK?

## **Adaptation**

Can changes in how we manage the city's resources help protect those resources or Northfield residents from the impacts of climate change?

## **Mitigation**

Can changes in how we manage the city's resources help us reduce GHG emissions or sequester carbon?

# Example: Northfield Parks

Threats to parks from climate change:

- Flooding & erosion
- Loss of trees
- Invasive species (wild parsnip!)
- Ticks

Using parks to mitigate climate change:

- Diminish heat-island effect
- Control flooding
- Sequester carbon

# Steps to a CAP:

- Choose a framework (like Compact of Mayors)
  - *Assess resources: Staff, leadership team*
- Gather baseline data
- Engage the community
- Create a plan!



We are here