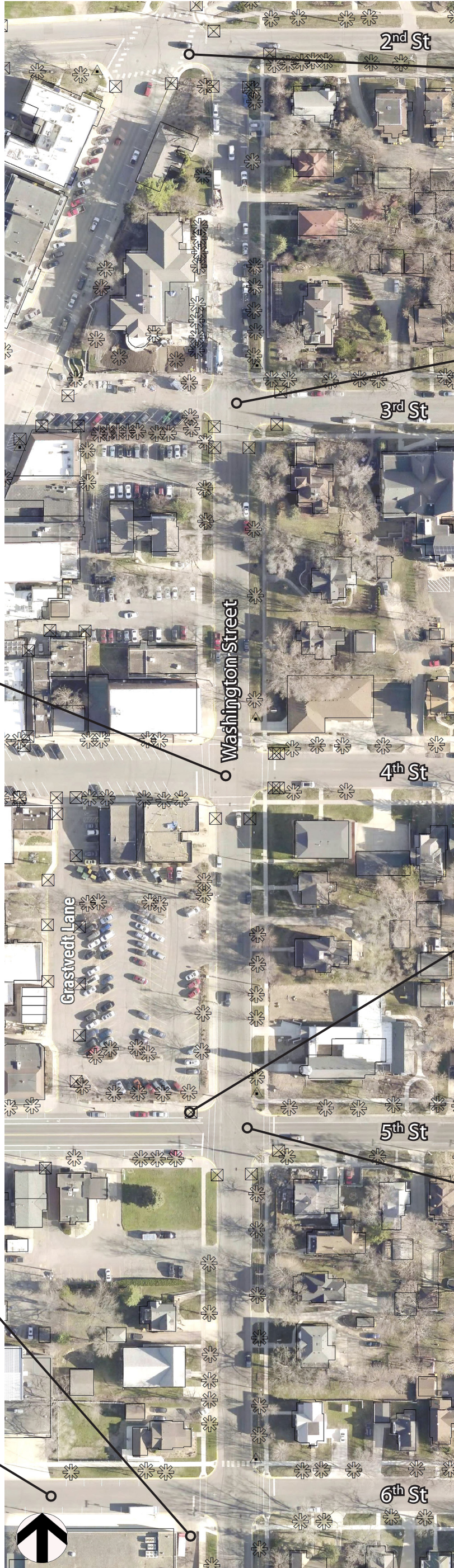


Washington Street (2nd St to 6th St)

The following comments summarize input received during two community open houses in August 2017.



- Cars often round this corner and speed past library
- Very treacherous area in winter due to hill

- Challenging to cross Washington at 3rd; parked cars reduce visibility
- Library is a hub of activity
- Transit stop on NW corner

- Can all-way stop at 4th be moved to 5th?

- A lot of Eastbound traffic does not stop
- Drivers on 5th do not see stop sign - many near misses

- Temporary bumpouts are helping slow vehicles down, but the design is confusing for many users
- Need a better intersection design for bicyclists - the bumpouts create a pinch point with bicyclists and motorists
- If there were more bumpouts along Washington, perhaps this one would be less confusing to users?
- Consider making this intersection a roundabout?

- Tight loading dock

- Busy parking on 6th Street with new brewery

Washington Street (6th St to Woodley)

The following comments summarize input received during two community open houses in August 2017.

- Would love to see trees on this block again

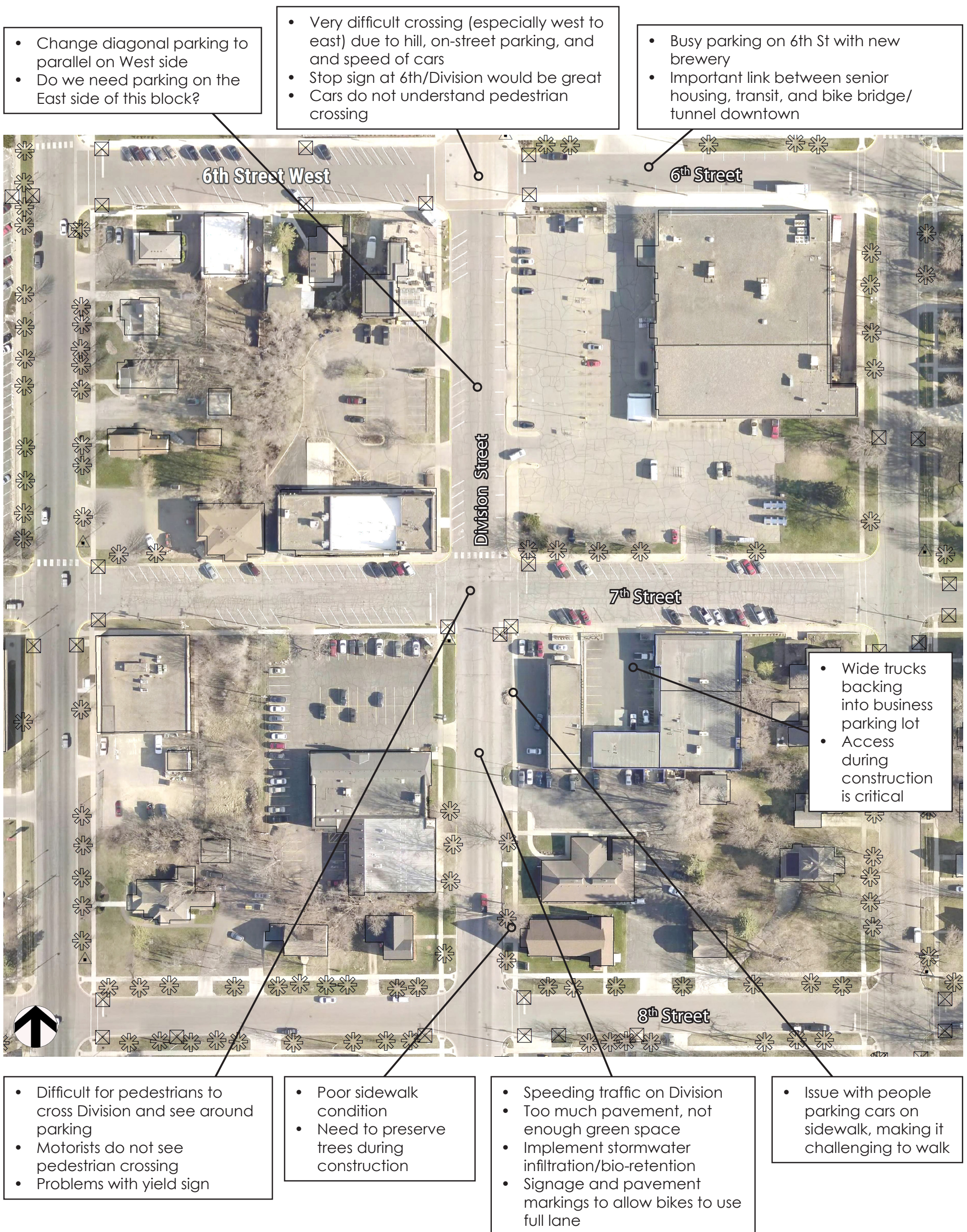


- Consider 4-way stop

- Cars coming from 8th seldom stop at this stop sign

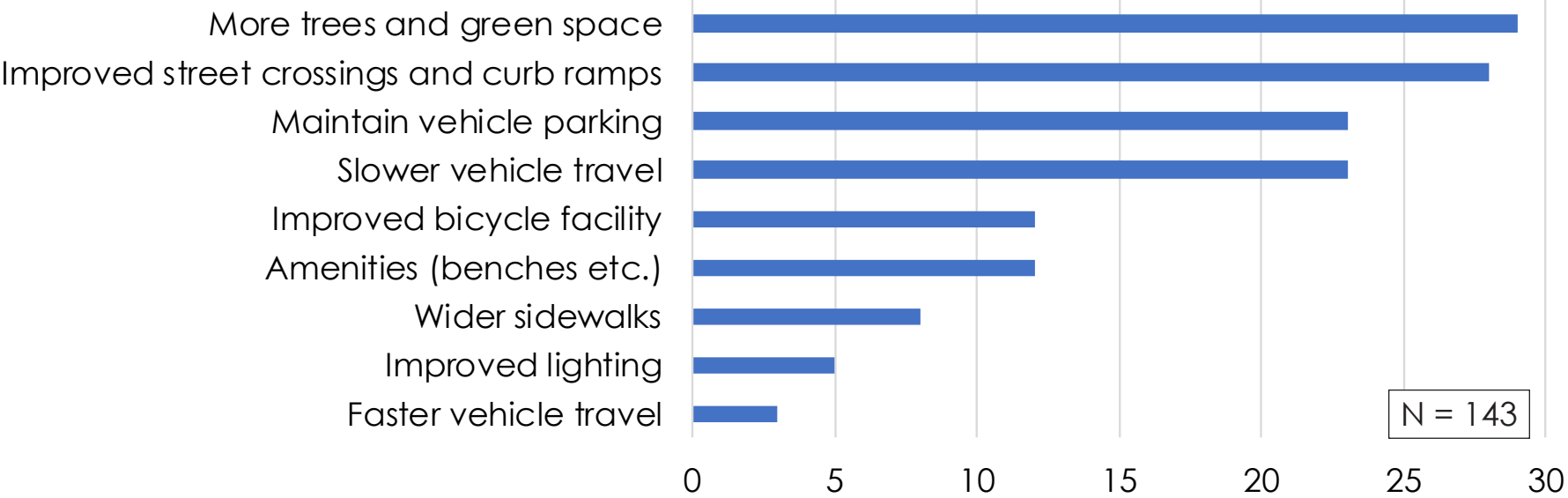
- Many U-turns here to get to mailboxes

The following comments summarize input received during two community open houses in August 2017.

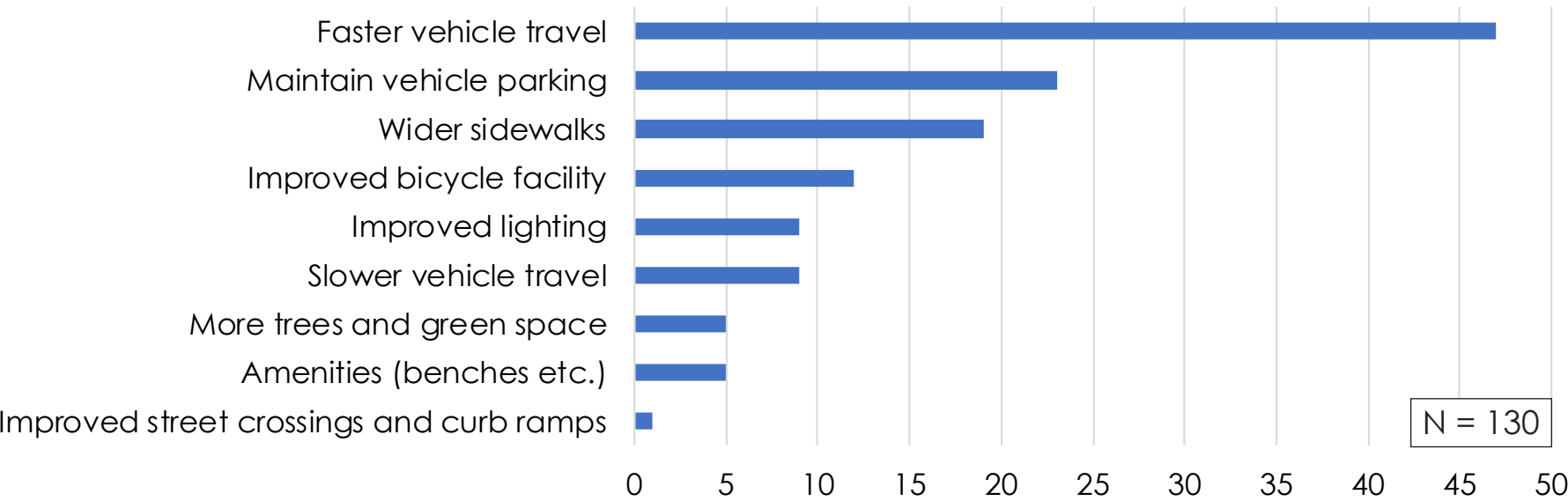


WASHINGTON STREET

MOST IMPORTANT
CHARACTERISTICS

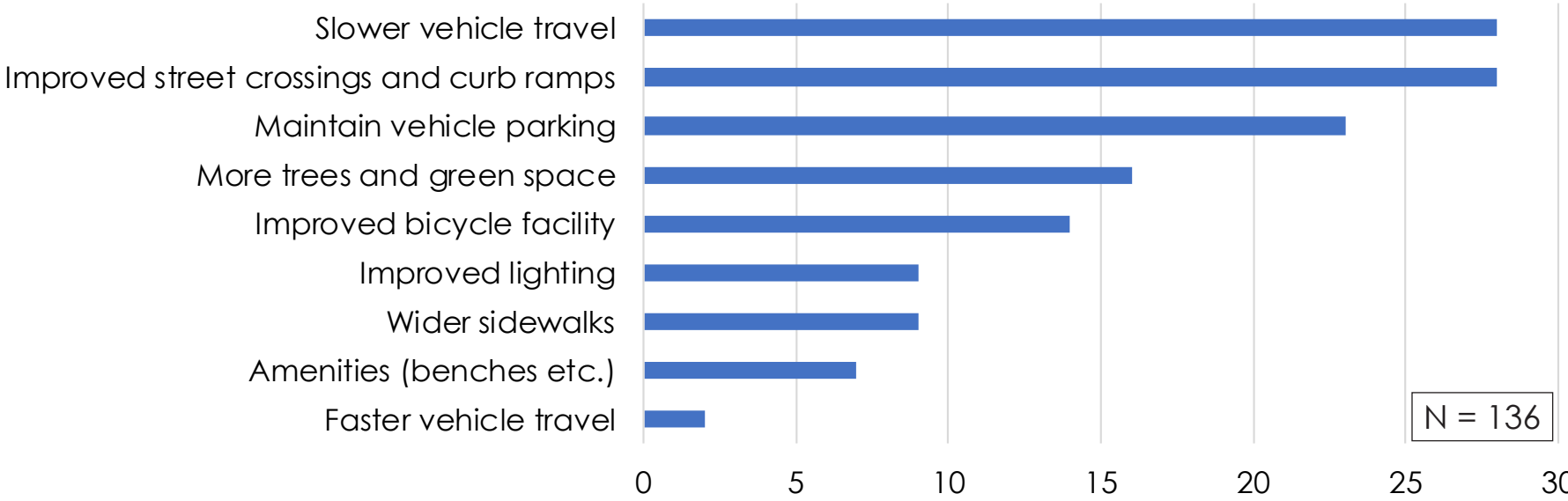


LEAST IMPORTANT
CHARACTERISTICS

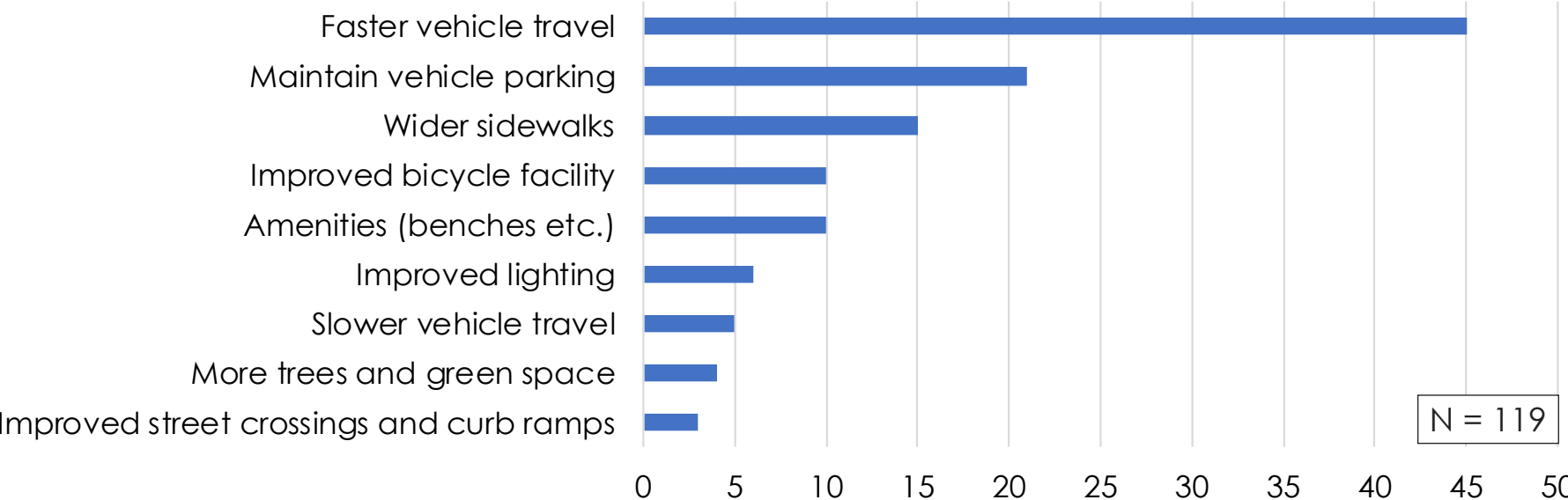


DIVISION STREET & 7th STREET

MOST IMPORTANT
CHARACTERISTICS

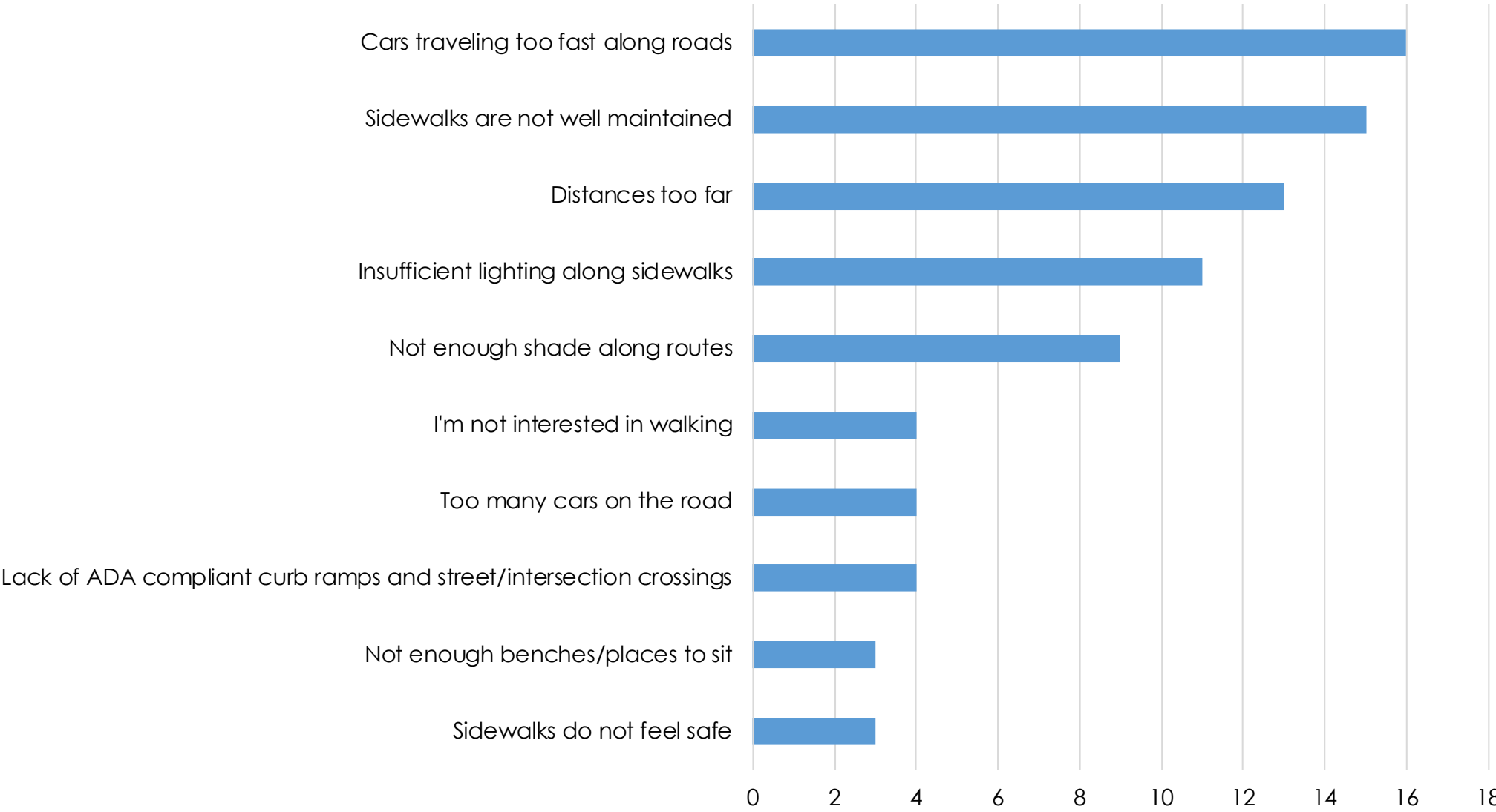


LEAST IMPORTANT
CHARACTERISTICS



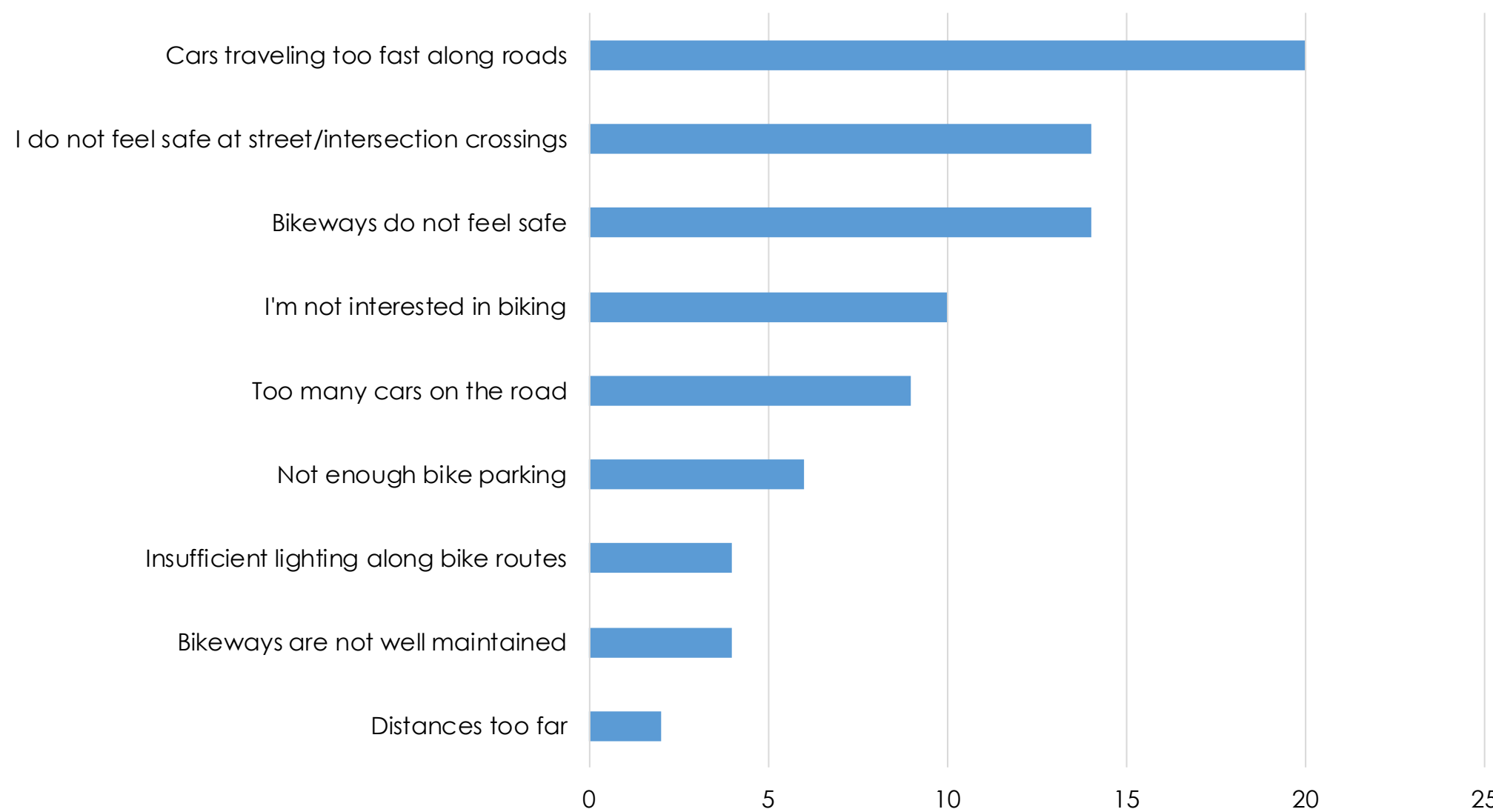
The following charts summarize results from two questions from an online survey from August 2017 about barriers to walking and biking in Northfield. Participants were asked to choose the top three reasons why they would NOT walk or bike to their destinations in Northfield, regardless of whether or not they currently walk or bike.

Top Barriers to Walking



N = 82

Top Barriers to Biking



N = 83