

Attachment A: RT Arts Corridor Collaboration Partners

Other Organizations

- Beautify Northfield Coalition
- Northfield in Bloom
- Garden Club
- Master Gardeners
- Arts & Culture Commission (City commission represented in Beautify Northfield)
- Arts Guild
- Northfield Downtown Development Corporation (NDDC)
- Chamber of Commerce
- Convention & Visitor's Bureau
- Save the Northfield Depot

City of Northfield: Council, Boards, Commissions

- City Council and Administration
- Economic Development Authority
- Environmental Quality Commission
- Arts & Culture Commission
- Parks & Recreation Board
- Planning Commission
- City Engineering
- Heritage Preservation Commission
- Public Library
- Friends of the Library

Other Partner Organizations and Businesses

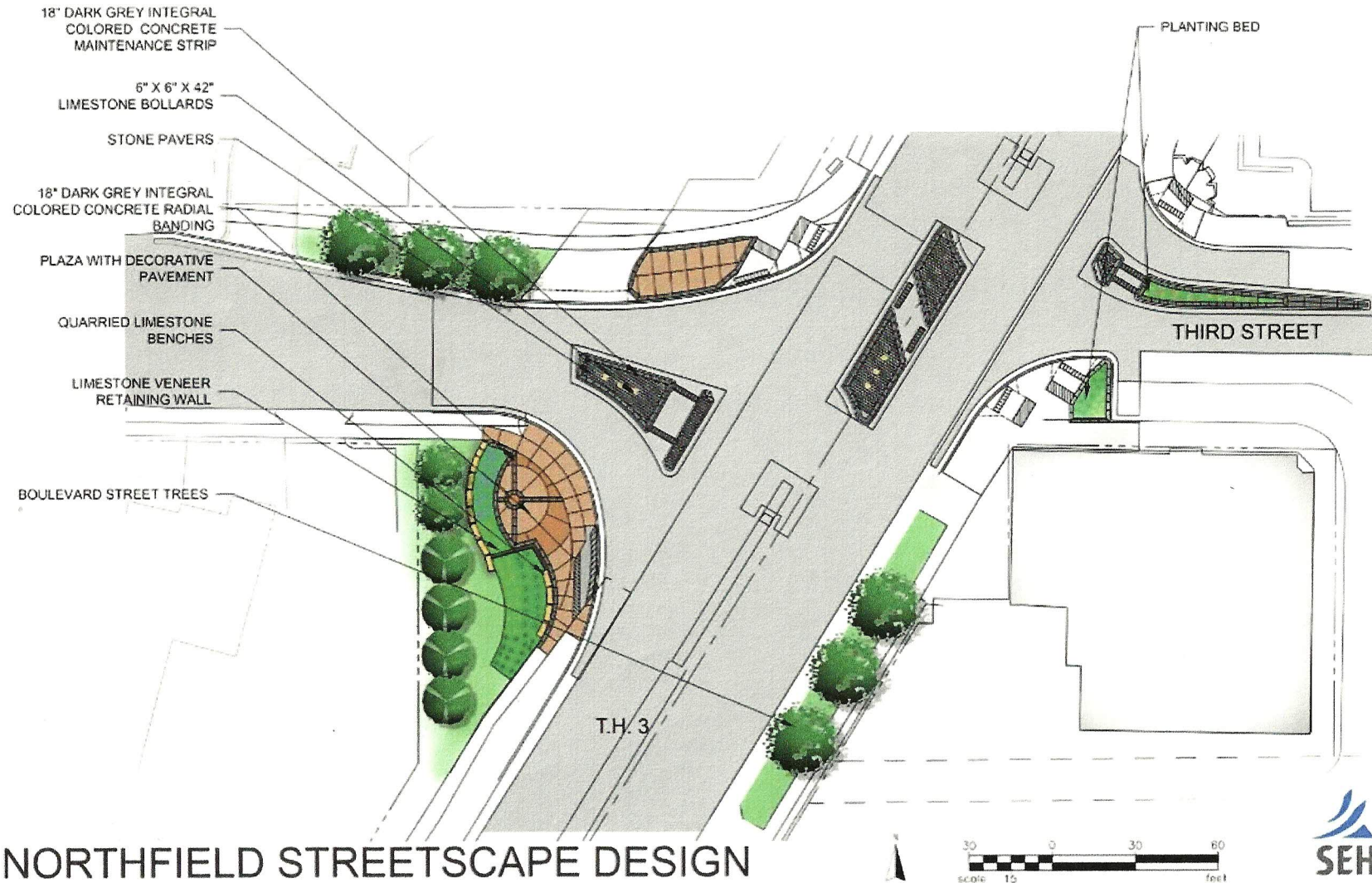
- Neighboring Property Owners and Businesses
- Cannon River Water Partnership
- Carleton College
- St. Olaf College
- Northfield Public Schools
- Northfield Shares
- Knecht's Nurseries & Landscaping
- MnDOT Context Sensitive Solutions personnel

Attachment A: Geographical Area

Corridor of the Arts



Northfield Streetscape Design



See additional images in Attachment B below.

Attachment B-1: Ideas from Workshops

Public comments/suggestions public at Roundtable workshops with Bill Johnson

Theme : Arts Corridor; Team: Alice, Tracy, Dave, Andrea

#1 Workshop: 2nd Street Corridor

- Arts & Culture connections include library & historical society
- 3rd st. on E side – Arts Plaza
- Accessibility to river
- Parking-library-Arts Guild connections
- Convert Arts Guild on 3rd to Arts Center. Create a corridor of the arts – 3rd st, river bridge, etc.
- Create a corridor of the arts – 3rd st, river bridge, etc.
- Sculptures in Ames park and tie to building replacing fire station. Sculpture will play a big role in the area. Sculpture includes land forms, etc

Bill's Closing Comments on the Arts: Enriching nature of accessibility of the arts, a connectively issue. Phil saw it as this – art is not always conscious, finding art in ordinary things. Give Phil the assigning of writing the intention for this area. Art will connect with the history and the roots. Shaping infrastructure into the arts – functional art. In MI town had a sculpture garden. Art can be everywhere.

#2 Workshop: 5th Street Corridor. Ideas on the topic were not mentioned in this workshop.

#3 Workshop: Greening the Commons (Highway 3)

- Small features – gazebo example, public sculpture
- Creating a sculpture park on west side of river/east of #3 to slow traffic down.

#4 Workshop: Bridge Square and Surroundings.

- Pedestals installed by streetscapes could hold sculptures
- "Cereal Bowl" sculpture on corner of Ames Park for tourist photos; MOM's big anniversary coming up
- Celebrate Ames Mill's use of the river that made our community possible: reinstall the historic neon sign, artwork on the building, etc
- Restore a safe, attractive, welcoming pedestrian system that defies Hwy 3.
- "Pedestrianization": small Swiss village that renewed all its pedestrian paths by incorporating a painting into the landscape so people are walking through the painting.
- Save space in the southwest corner of Ames Park for an iconic sculpture.

#5 Workshop: South Highway #3. Ideas on the topic were not mentioned in this workshop.

#6 Workshop: Commercial-Residential Interface

Note: The evening before the large workshop, a preliminary meeting was held with Bill, two MnDOT representatives, representatives from city commissions and committees and citizens interested in discussing the options for making the #3 and 3rd street more pedestrian friendly. At that meeting a citizen suggested the idea of a "Corridor of the Arts" which was met with enthusiasm by all. One MnDOT rep had experience with such a corridor elsewhere and made the following suggestions:

- knee walls
- contrasting colors in pavement
- banner poles in median

- more lines on pavement
- in-pavement pedestrian activated LED crosswalk lights
- dynamic speed display signs
- two-tiers of road & pedestrian trees
- plants along 3rd St. W. with identification tags to create interest
- sculptures along the corridor with seating
- plaza-like area on 3rd St., west of highway in area adjacent to Q-block; part of creating a "arts corridor" from west to east side.

The "Corridor of the Arts" was suggested as an idea by several the next day at the Commercial-Residential Interface Workshop. Other related comments:

- Designation of an "Arts Corridor" may expand use of the area for arts purposes: housing, studios, related crafts and businesses
- Decade-old concept of apartment/studio space at Second and TH3 is still a good idea.

Below is a summary of what Bill Johnson heard from participants and summarized as "The Big Idea: A "Corridor of the Arts".

The Big Idea: A "Corridor of the Arts".

The Arts Corridor area is the heart of the Northfield community; it cuts across the area and stitches it together a wound, the highway – thus, it is a big idea. The Corridor of the Arts arose in the discussions as a significant component in addressing connectivity between areas that are divided by the highway. The big connector is the highway (designated by circle); it is the most crucial thing to solve right now. Both the corridor and the commons stitch the community together in different directions creating the center of the community, the inner circular area found on the original Mickey Mouse drawing.

Creating identity, links, and connectivity through the transition areas was a major focus of participant discussion of the issues and suggested actions Bill identified the Arts Corridor as the heart of the Northfield community that cuts across key areas from east side neighborhood to the west side neighborhood, i.e., from the Library and Weitz Center on the east to the NAG Theater on the west. Bill pointed out that the pieces of the potential corridor between the Theater and Library currently exist and suggested that giving the corridor a name, adding sculptures, and plants as suggested by participants and adding education, and general awareness programs, the Arts Corridor could become "the walk of the town" if the crossing were addressed.

Bill provided the attached sketch (see Arts Corridor) as a synthesis of the ideas and comments about the Corridor of the Arts. Again he encouraged us to think in terms of the area as a big idea made up of a lot of little doable elements. To address the challenge of the big idea, he identified two crucial problems to solve: the pedestrian crossing at Third and Highway #3 and greening of the Commons.

As viewed by Bill, the success of the Corridor is key to completing the east-west connection with some kind of pedestrian way across the highway on Third street. He believes that solving the highway crossing doesn't have to include a stop sign, and that a combination of seemingly simple traffic calming measures put together in a creative way could achieve a safe pedestrian crossing. (paragraphs about the intersection design have been omitted)

In addition to creating a more friendly and safe pedestrian crossing, Bill noted the importance of using traffic calming and green elements in the area that gives the driver a sense of entering a special place, a gateway to the city. Specific elements suggested by participants included

- trees (Bill suggested 30-40 big, columnar, deciduous trees plus distinctive lighting),
- green corners owned by MNDOT,
- off-right-of-way planting sites,

- banner poles in median and boulevards
- "creative edging" along the highway.

The accumulation of these and other potential elements that will come by increments can create a crossing that looks and functions as an east-west promenade and a gateway to the downtown that links the two commercial and residential areas and could be safely enjoyed.

It is a big idea made up of a lot of little doable things. To address the challenge of the big idea, Johnson identified two crucial problems to solve: the pedestrian crossing at Third and Highway #3 and Greening of the Commons.

1) The Crossing at 3rd Street (suggested design of crossing has been omitted) but included traffic slowing practices suggested by MnDOT the previous evening (see above).

The accumulation of these and other potential elements can create a crossing that looks and functions as an east-west promenade and a gateway to the downtown that links the two commercial and residential areas and could be safely enjoyed.

2) Greening of the Commons

The "Greening of the Commons". This north-south segment intersects and encompasses the railroad, Highway #3 and river. The crossing and promenade area offers a significant opportunity for greening this portion of the Commons. Greening of the commons will come by increments rather than one big investment that would change it overnight.

In this session as in earlier sessions, participants noted the opportunity to gather up the tiny pieces of land along the highway that can't be used for other things and turn them into a theme of green in ways that are identifiable, e.g., native plants or a set of associated plants or grasses that pop up along the corridor. An important element identified by Johnson is the north high point on the overpass where you can look down the slope and see the elements that might be added to the 3rd street crossing of Highway #3 as a sign that the motorist is about to enter a special area.

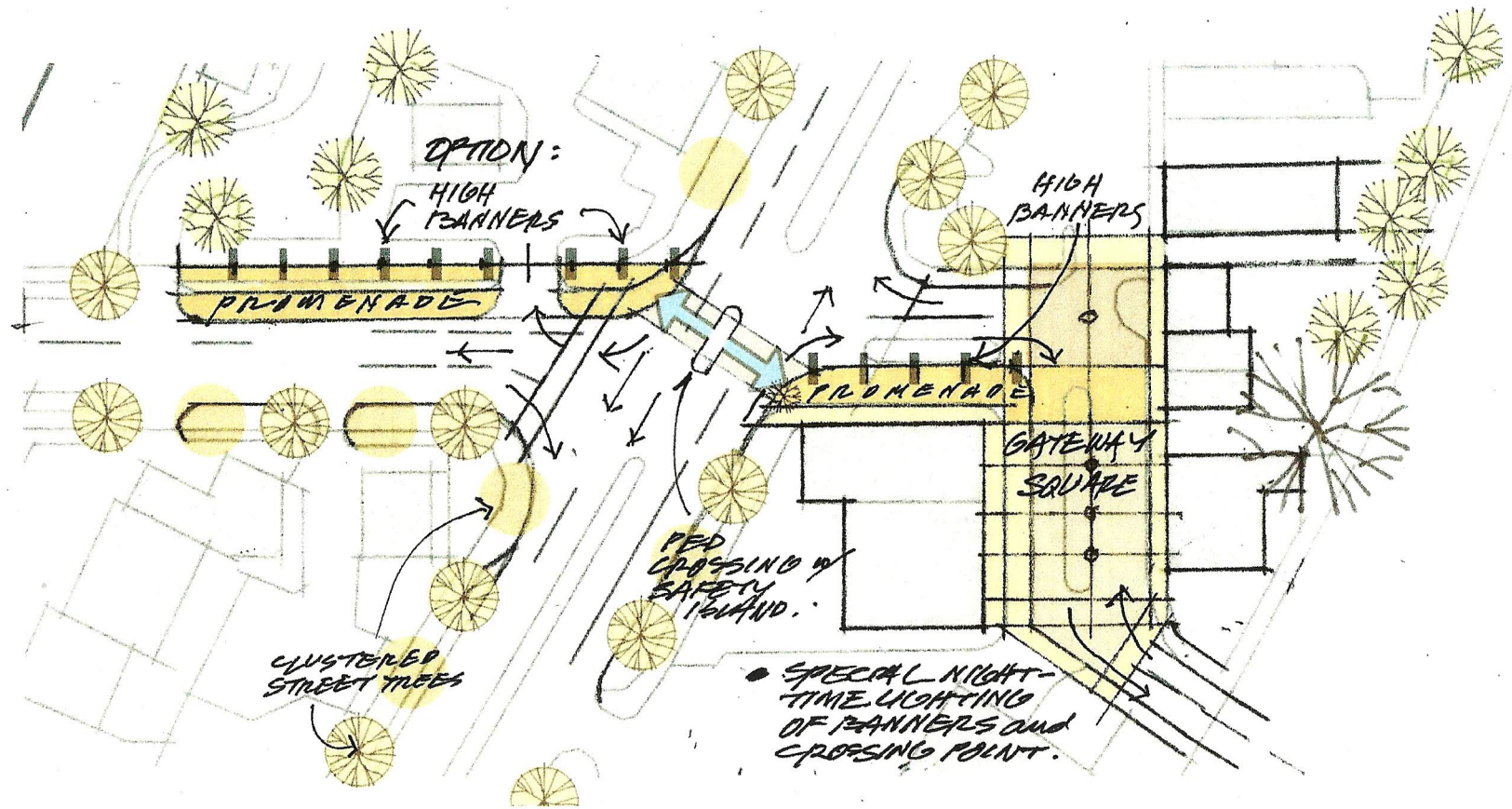
If each side of 3rd street on each side of the highway is not a critical circulation street (although needing to be used for egress and access) there is an advantage from afar of the gain that could come from narrowing the street. This area is an opportunity that could be a green place that marks this area from afar. That would symbolize a lot of the intent to green the commons and be concentrated in the area of the east-west corridor. It could be columnar trees that don't take much space but imply this is a parkway at least for two blocks. It may require an investment in big trees here perhaps in combination with sculpture and lighting that is designed to glow with distinctive lighting. Such elements as suggested above to mark the intersection will serve this area in a distinctive way to traffic coming both ways.

Bill's Closing Comments.

- Think of finding a way (or ways) to signal the center of downtown.
 - How will we replace the signal that is the cottonwood tree behind Basil's?
 - This is also where the Arts Corridor intersects with the Commons.
- How can we create a "parkway" for two or three blocks? Consider:
 - Investing in 30-40 big, columnar, deciduous trees plus distinctive lighting
 - Narrowing lanes of streets both N/S and E/W
 - Green corners owned by MNDOT as part of the solution
 - Off-right-of-way planting sites as part of the answer
 - Banner poles in median and boulevards
 - "Creative edging"

- Focus on tackling something that's really going to make a difference. Much of what we're after is already in place.
- Stay in contact with MNDOT; they want to know what people are thinking.
- Improving pedestrian crossing at Third St. and TH3 is crucial to "completing the set" of crossings where there is strong need and desire. It will tie businesses together too.
- To keep moving, pick out some key actions/projects to do and include operation and maintenance of those projects as part of the thinking.

#7 Workshop: Workshop: Highway #3 Corridor North. Ideas on the topic were not mentioned in this workshop.



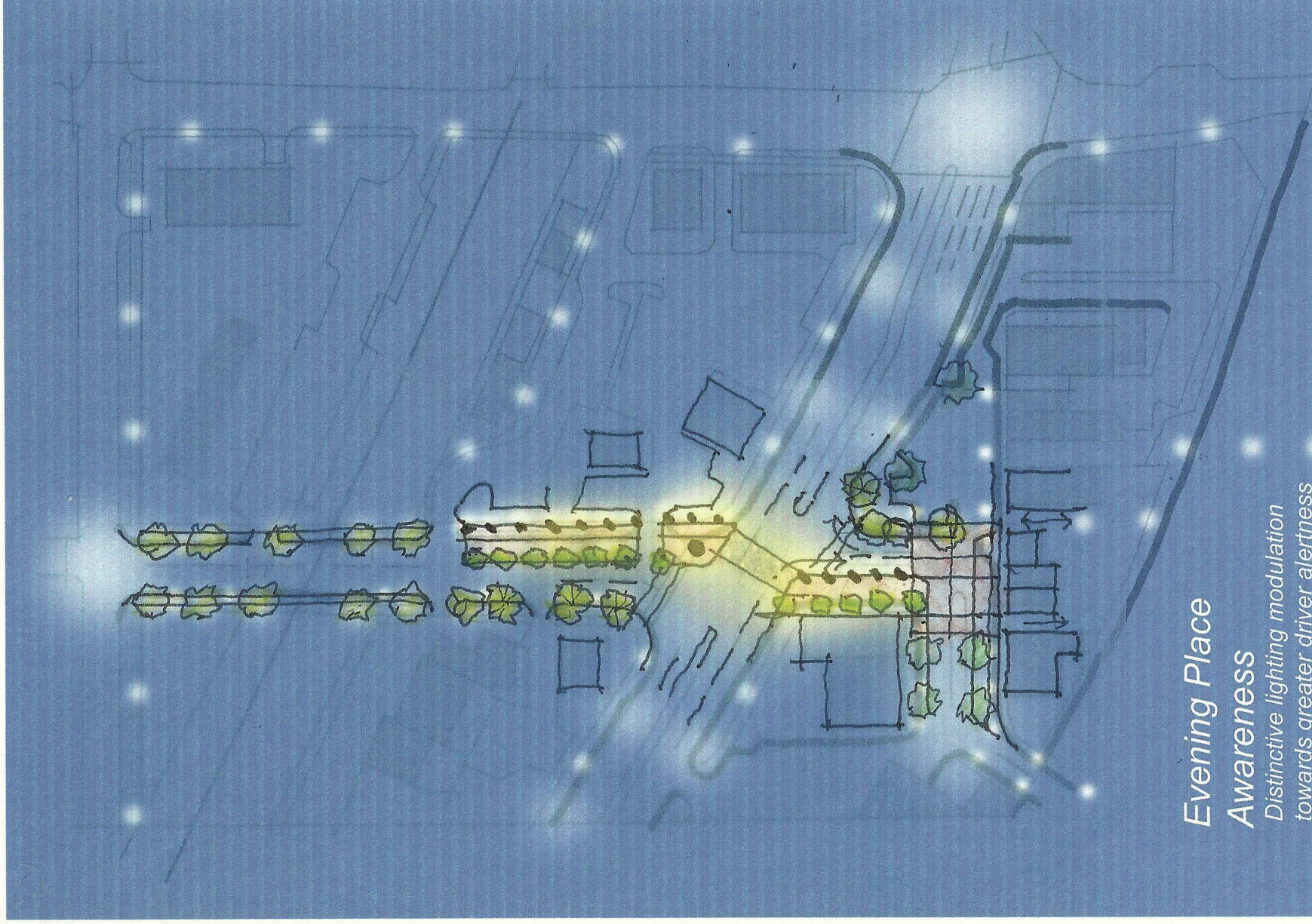
BANNERS OPTION

Northfield Downtown - Crossing potentials at Hwy 3 & 3rd

Roundtable discussions draft - not for distribution

JAN, 2014

B4



Evening Place

Awareness

Distinctive lighting modulation
towards greater driver alertness
& pedestrian crossing safety.

Northfield Downtown - Crossing potentials at Hwy 3 & 3rd
Roundtable discussions draft - not for distribution

Attachment B – 2: Comp Plan

**Excerpts from “Objectives/Strategies”
in 2008 Northfield Comprehensive Plan**

Community Identity (CI)

CI 2 Strengthen downtown as an historical and cultural center of the community.

- CI 2.1 Maintain and enhance existing public spaces and create new public gathering places for social interaction.
- CI 2.2 Identify strategic locations to more effectively integrate the Cannon River into the fabric of the downtown, while also protecting its environmental quality and enhancing its visual appearance.
- CI 2.3 Create new educational, artistic, cultural and recreational activities along the Cannon River in and around the downtown.
- CI 2.4 Identify and designate an arts and cultural district in the downtown.
- CI 2.5 Support existing and new local businesses that provide dining, retail, arts and entertainment.

CI 6 Continue to host and sponsor local arts and cultural activities and festivals.

- CI 6.1 Develop initiatives in collaboration with the Arts and Culture Commission to promote the arts and cultural qualities of Northfield.
- CI 6.2 Solicit input from members of the local design community when building or renovating public facilities
to enhance the quality of these facilities and grounds.
- CI 6.3 Create opportunities, in collaboration with local students and Northfield arts organizations, for the public to contribute to sense of place (e.g., public art, landscaping, and outdoor activity areas).
- CI 6.4 Create a community seal to be used in a wide range of public improvements.
- CI 6.5 Explore regulations to implement a “percent-for-arts” requirement in community-funded projects.
- CI 6.6 Develop an “artist in residence” program in the public works department.
- CI 6.7 Incorporate public art into the design of existing and public places including community buildings and infrastructure.

Economic Development (ED)

ED3 Expanding and revitalizing the Cannon River corridor will be a pivotal part of the strategy to maintain the historic character that is Northfield

- ED 3.4 Encourage further redevelopment/intensification in downtown as a means to maintain and add to the vitality of this area. Downtown redevelopment/intensification should focus on retail uses, professional services, arts activities including opportunities for live-work development, businesses that support other businesses, and downtown housing.

ED4 Support the economic vitality of the community through business retention and recruitment and enhancement of tourism opportunities.

- ED 4.6 Support programming efforts to further tourism in Northfield, e.g., Historic and Festival Programs, Arts and Cultural Programs and Tours.