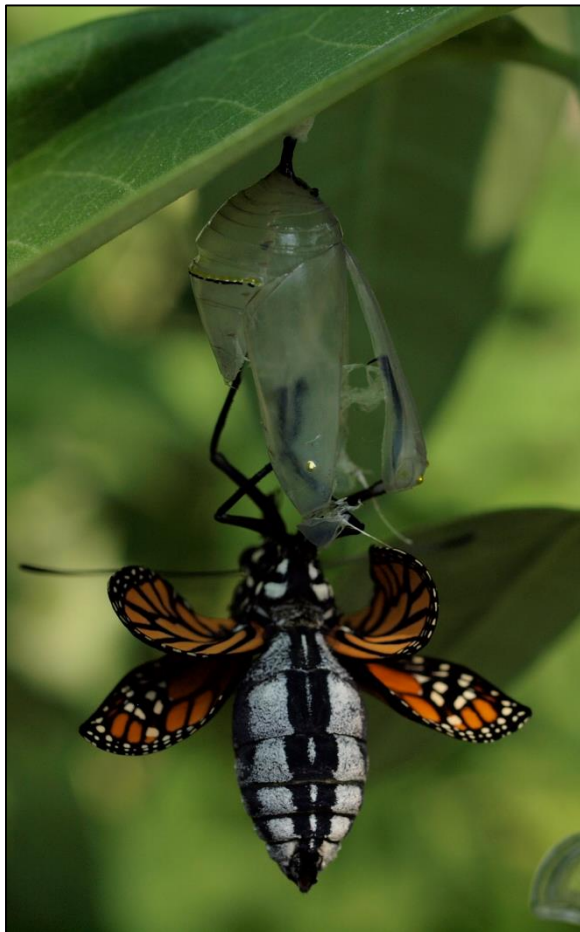


## A Growing Trend

Recognizing the importance of conserving Minnesota's wildlife, thousands of people around the state have started to replace traditional green turf lawns with their own native plant landscaping projects and this is a great opportunity to join in and see what the buzz is about!

**Below:** Monarch butterfly emerging from chrysalis



**Top:** Honeybee **Bottom:** Monarchs and Hummingbird

## Our Program

Providing a wildflower-rich habitat is the most significant action you can take to support pollinators, which in turn supports the entire ecosystem.

Thus, to encourage the growth of native plant communities in Northfield, we are offering a 33% rebate of up to \$75 on native plant purchases.

## City of Northfield

### Native Plant Landscaping Rebate Program



Brochure by Evan Walser-Kuntz  
Photos taken from the Minnesota DNR webpage

## Why Native Plants?

Native prairie, woodland, and wetland plants have evolved to thrive in our natural conditions and, after a season or two, will usually require less maintenance than a conventional lawn or garden and also can help reduce water runoff and erosion.

Native plants generally do not require the use of chemical fertilizers or pesticides which saves you money and reduces harm to the environment.

Many native plants are quite beautiful and a patch of them can give your yard or garden a rustic feel, while providing the additional benefit of providing food and shelter for birds and beneficial insects (which include pollinators such as butterflies and bees, but also dragonflies which eat mosquitoes and other pests).

## Things to Consider

There are many different types of native plants to select from, so being aware of the following can help you choose the plants best suited for your backyard:

How much sun do you get in your backyard?

What is the soil like?

Are there any low areas that tend to collect water during rains?

How much space is available for adding new plants?

Can you remove some of your turf grass to make more room?

Talking with a specialist at a plant nursery or garden center can also help inform your decision.



**Above:** Monarch caterpillar on butterfly milkweed

## Additional Resources

The MN DNR list of native plant nurseries for Southern Minnesota:

[http://files.dnr.state.mn.us/assistance/backyard/gardens/native\\_plant/suppliers\\_south.pdf](http://files.dnr.state.mn.us/assistance/backyard/gardens/native_plant/suppliers_south.pdf)

The MN DNR brochure on native plant landscaping

[http://files.dnr.state.mn.us/assistance/backyard/gardens/native\\_plant/nativelandscaping.pdf](http://files.dnr.state.mn.us/assistance/backyard/gardens/native_plant/nativelandscaping.pdf)

A descriptive list of plants native to the Great Lakes Region

[http://www.xerces.org/wp-content/uploads/2014/03/GreatLakesPlantList\\_web.pdf](http://www.xerces.org/wp-content/uploads/2014/03/GreatLakesPlantList_web.pdf)



**Below:** An example of native plant landscaping

## How to Apply

**Print and complete a form at:**

(<http://www.ci.northfield.mn.us/index.aspx?NID=1063>)

**Or fill out a form at City Hall:**

801 Washington Street  
Northfield, MN 55057