




**Standard Applied to
Adjust Front Footage
of Assessed Parcels**

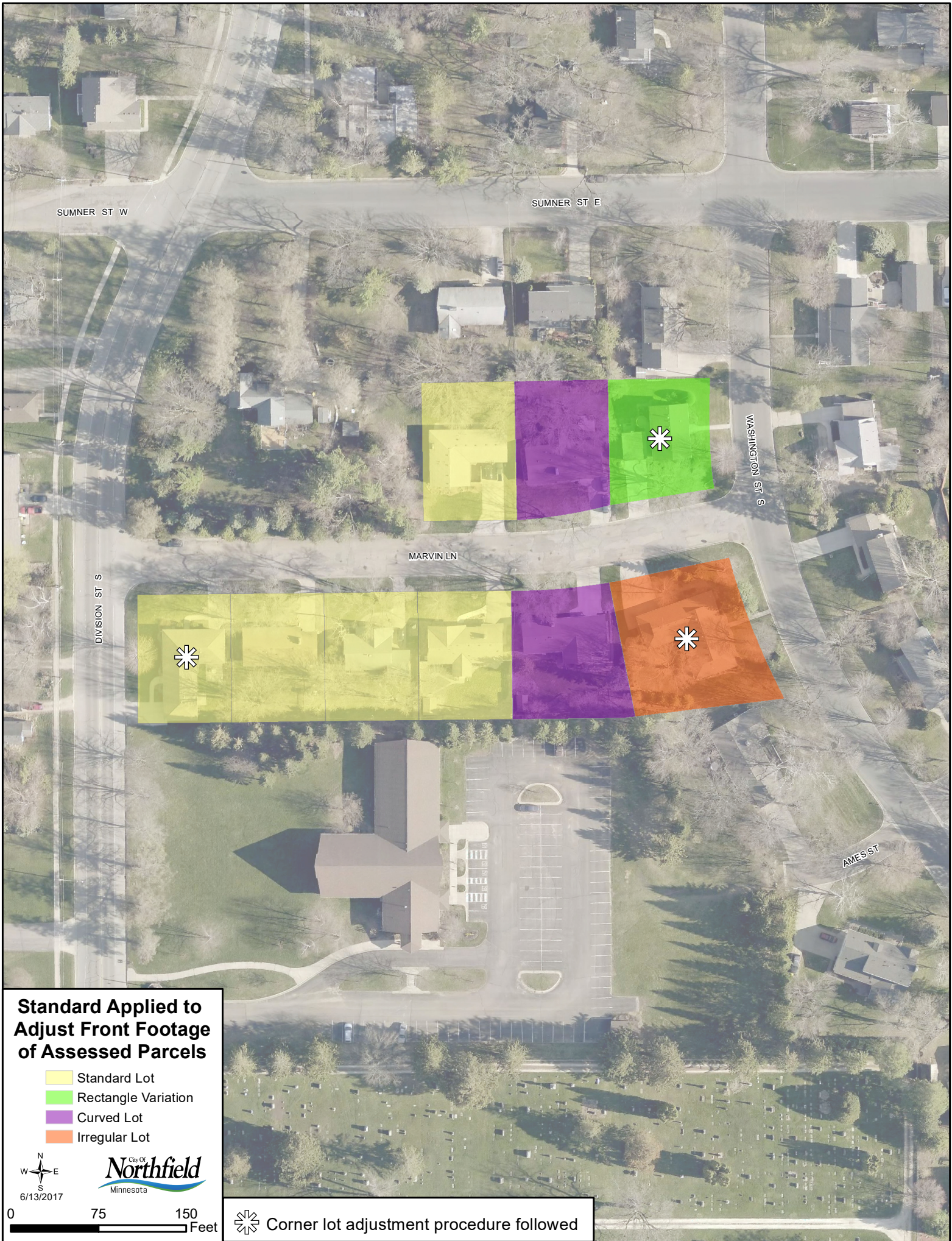
-  Standard Lot
-  Cul-de-sac Lot
-  Irregular Lot



City of
Northfield
Minnesota

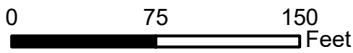
0 100 200 Feet

 Corner lot adjustment procedure followed

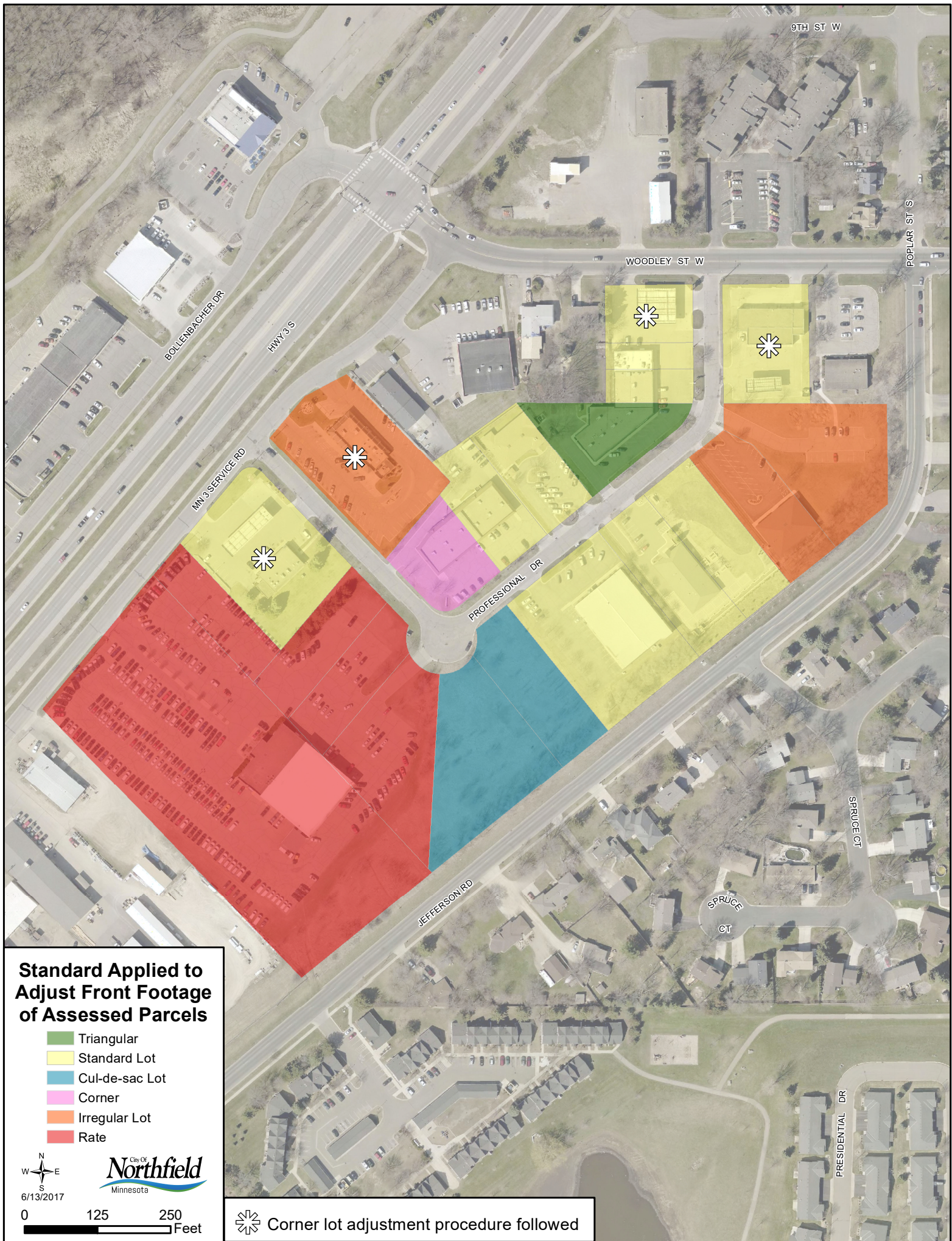


**Standard Applied to
Adjust Front Footage
of Assessed Parcels**

- Standard Lot
- Rectangle Variation
- Curved Lot
- Irregular Lot



Corner lot adjustment procedure followed



**Standard Applied to
Adjust Front Footage
of Assessed Parcels**

- Triangular
- Standard Lot
- Cul-de-sac Lot
- Corner
- Irregular Lot
- Rate

Corner lot adjustment procedure followed



**Standard Applied to
Adjust Front Footage
of Assessed Parcels**

- Standard Lot
- Cul-de-sac
- Curved Lot



City of
Northfield
Minnesota

0 125 250
Feet



Corner lot adjustment procedure followed