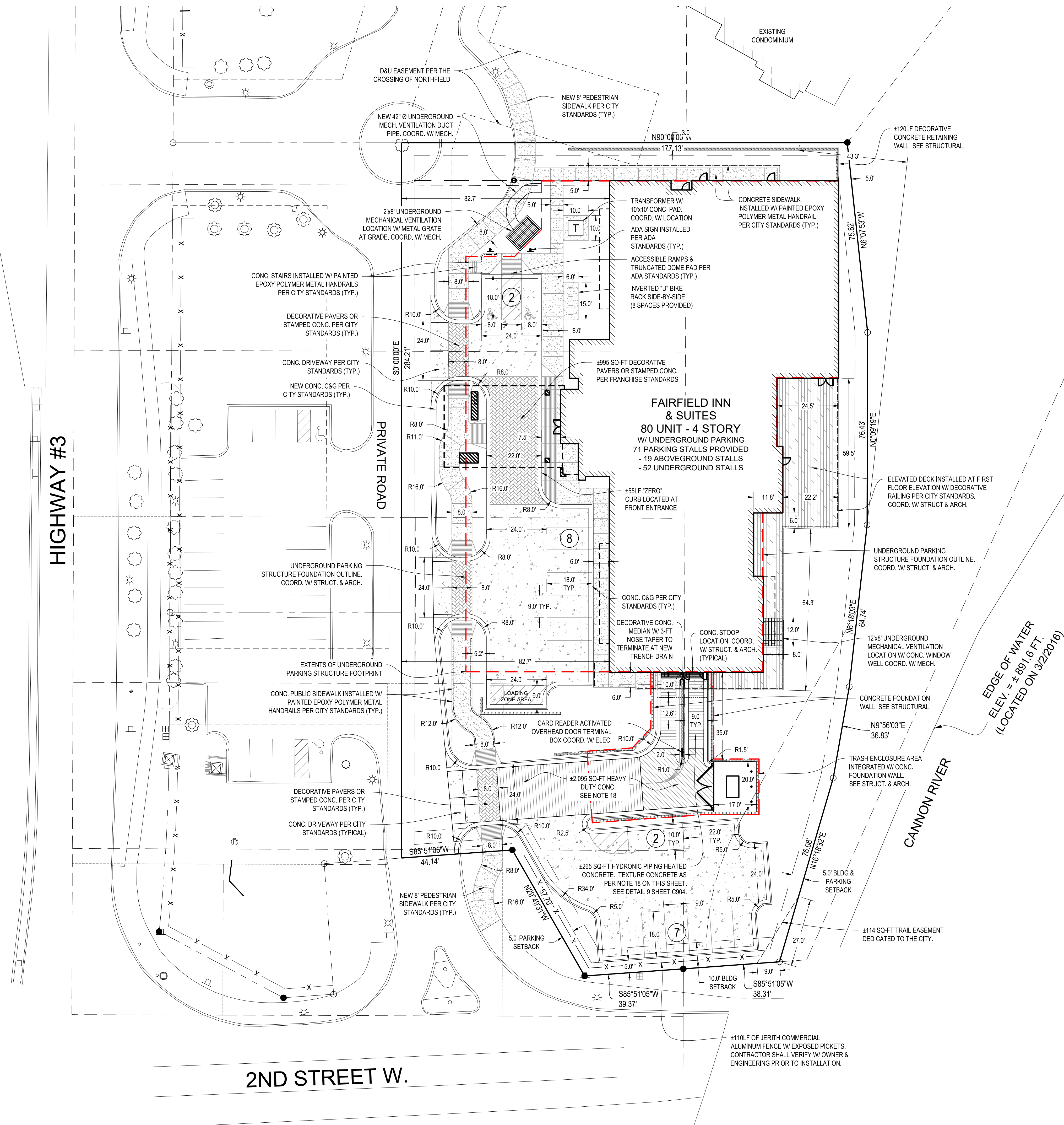


03/24/17 11:04:39AM F:\Projects\16026\Civil\16026\_Plan\Drawings\Sheets\16026\_C10.dwg



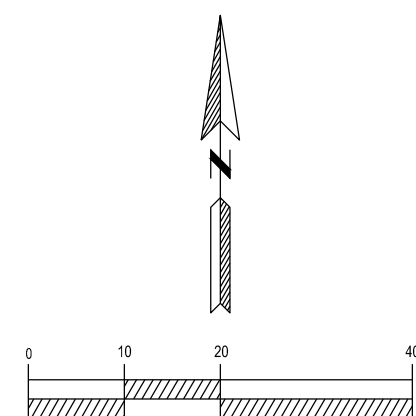
#### SITE PLAN NOTES:

1. CONTRACTOR TO VERIFY ALL UTILITY LOCATIONS PRIOR TO CONSTRUCTION.
2. CONTRACTOR TO VERIFY ALL DIMENSIONS & ELEVATIONS PRIOR TO CONSTRUCTION.
3. ACCESSIBLE RAMPS & DRIVEWAYS SHALL BE INSTALLED PER MINNESOTA ACCESSIBILITY STANDARDS/REGULATIONS.
4. CONTRACTOR SHALL PROVIDE BOND BREAKER BETWEEN NEW SIDEWALK, NEW CONCRETE PAVEMENT & BUILDING, & AT ALL CONSTRUCTION JOINTS.
5. CONCRETE SIDEWALK & CONCRETE PAVEMENT SHALL BE SAW CUT AT APPROXIMATE SQUARES.
6. CONTRACTOR SHALL COORDINATE STOOP CONSTRUCTION WITH SURFACE CONCRETE.
7. CONTRACTOR SHALL PROVIDE A 3' (THREE FOOT) TAPER IN CURB WHERE CURBING TERMINATES.
8. ALL ANGLES ARE 90° UNLESS OTHERWISE NOTED.
9. ALL RADII ARE 5' UNLESS OTHERWISE NOTED.
10. DIMENSIONS FOR BUILDING TIE ARE TO FACE OF BUILDING.
11. ALL DIMENSIONS ARE MEASURED FROM FACE OF CURB TO FACE OF CURB UNLESS OTHERWISE NOTED.
12. ALL DIMENSIONS ARE HORIZONTAL DIMENSIONS.
13. SEE ARCHITECTURAL PLANS FOR EXACT BUILDING DIMENSIONS.
14. MONUMENT SIGN DESIGN SHALL BE BY OWNER.
15. ALL STANDARD PARKING STALL PAVEMENT SHALL BE PER CITY OF NORTHFIELD STANDARDS.
16. ALL SIDEWALK AND DRIVEWAY PAVEMENT WITHIN R.O.W. SHALL BE PER CITY OF NORTHFIELD STANDARDS.
17. ALL SPECIFIED AND SHOWN PAVEMENTS SHALL BE IN DIRECT COMPLIANCE WITH THE CURRENT DESIGN STANDARDS AND APPLICATIONS SET FORTH BY THE CONTROLLING STATE AGENCY AND/OR MUNICIPALITY.
18. RAMP TEXTURING
  - 18.1. IMMEDIATELY AFTER CARPET DRAG OR BROOM TEXTURING, TEXTURE THE CONCRETE RAMP SURFACE WITH A TRANSVERSE METAL-TINE PATTERN PRODUCED BY USING A DEVICE MEETING THE FOLLOWING CHARACTERISTICS & REQUIREMENTS:
    - 18.1.1. EQUIPPED WITH STEEL TINES FROM 4" TO 6" LONG AND FROM  $\frac{1}{12}$ " TO  $\frac{3}{8}$ " THICK,
    - 18.1.2. STEEL TINES ARRANGED TO OBTAIN RANDOMIZED GROOVES FROM  $\frac{1}{8}$ " TO  $\frac{5}{16}$ " DEEP, AND
    - 18.1.3. VARIABLE SPACING BETWEEN TINES FROM  $\frac{3}{8}$ " TO 1"
  - 18.2. CONTRACTOR MAY USE OTHER TEXTURING EQUIPMENT THAT WILL PRODUCE AN EQUIVALENT TEXTURE AS APPROVED BY THE ENGINEER.
  - 18.3. DO NOT TEXTURE WITHIN 1 FT OF CURBS.



CALL BEFORE YOU DIG

GREATER MINNESOTA  
1-800-252-1166



#### REVISIONS

## FAIRFIELD INN & SUITES 80 UNITS, 4 STORIES NORTHFIELD, MINNESOTA

LJA JOB #	16026
PROJ. DATE:	03-24-16
FILE NAME:	16026_C10
DWG. SCALE:	1" = 20' @ 24" X 36"
CHECKED BY:	TMT
DRAWN BY:	BW-DM-TK

#### SHEET DESCRIPTION

#### SITE PLAN

**C400**

Mar 24, 2017 ©