

# Creating an Age-Friendly Northfield

April 19, 2016 City Council Meeting

# Interview at Northfield Senior Center

## ATTRIBUTES OF LIVING IN NORTHFIELD

“We recently moved to Northfield to retire. We chose Northfield because of its vibrant arts community, the two colleges, all that the Northfield Senior Center has to offer ... even because of just walking down the street and reading the poetry in the sidewalks – it’s all part of a culturally rich community.”

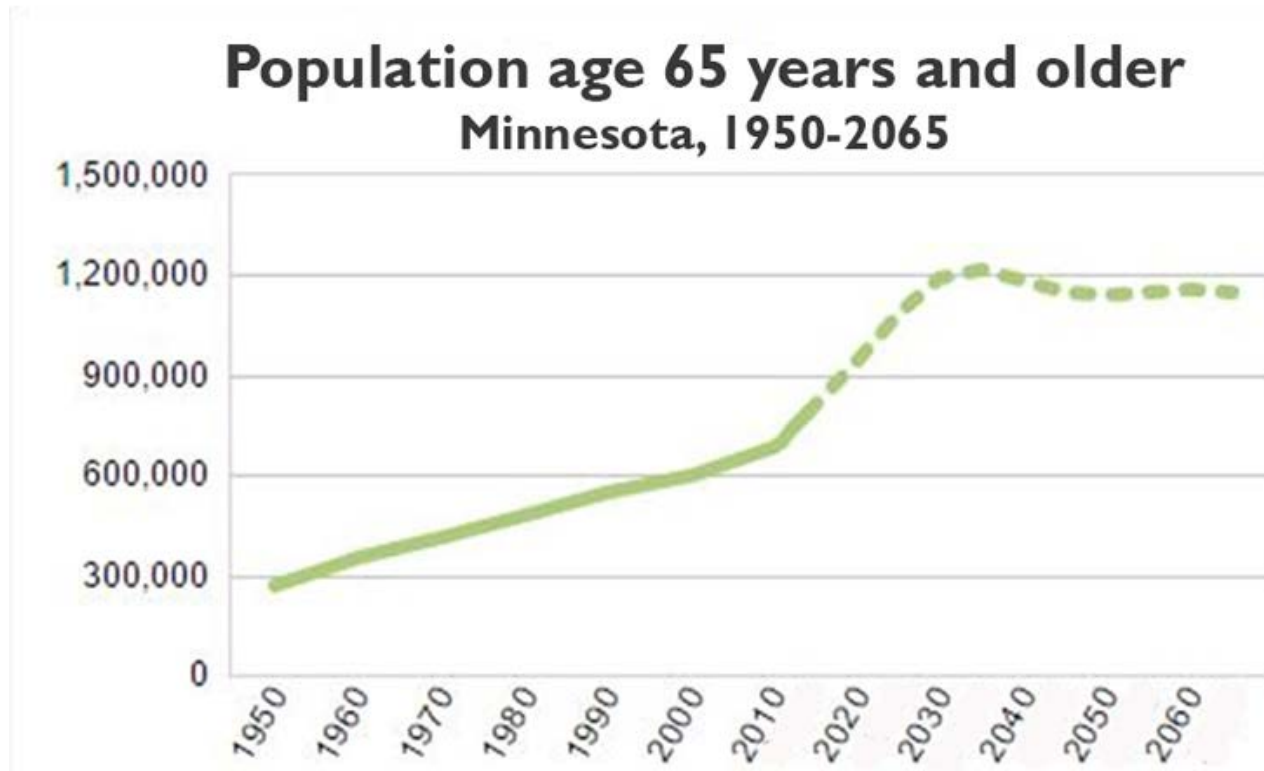


# Northfield recognized as Best Place to Retire



... and history of collaboration





- By 2030 in Minnesota 1 in 4 residents are projected to be age 65+.
- In 2015, 9,732 people in Rice County were age 65+.
- The number of people age 65 and older in Rice County is projected to almost double by 2035 to 18,092.

SOURCES: Minnesota State Demographic Center and U.S. Census Bureau, Decennial Census and Population Estimates.

# Interview at Northfield Senior Center

## **Staying active, engaged and contributing to the community**

People are living longer! As we age into our 80's and 90's, there is a greater need to stay connected. Our older population has much to give.



We want to continue to find ways to engage with youth. We can learn from each other.

# Benefits of Age-Friendly Northfield

- Older adults are valuable community assets.
  - Share community heritage
  - Provide lifelong connections and relationships
  - Volunteer for many efforts: caregiving, Meals on Wheels, Grandparents Read in School, CAC, retirement centers, schools, churches, hospital, etc.
  - Contribute major philanthropic support for non-profits
- Economic benefits include:
  - largest consumer group,
  - rely on local businesses for products and services
  - entrepreneurship



# The Network of Age-Friendly Communities

## Our Vision and the “8 Domains of Livability”



**Transportation**



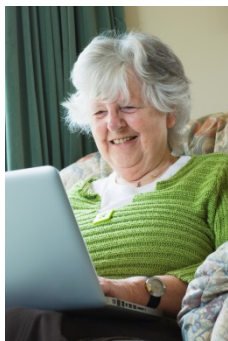
**Housing**



**Outdoor spaces & buildings**



**Community support & health services**



**Communication & Information**



**Social participation**



**Respect & social inclusion**



**Civic participation & employment**

# Interview at Northfield Senior Center

## CONCERNS AS WE AGE- access to and knowledge of resources

Many senior are not aware of the services our community offers and are not sure where to go to find them. It becomes more difficult for those living in rural Northfield and for those who are homebound.



We feel the **socialization** issue is extremely important to living well. It's much easier to shut your door than open it to others. We have to continue to grow our transportation options.



# Interview at Northfield Senior Center

## CONCERNS AS WE AGE

### Housing and living options

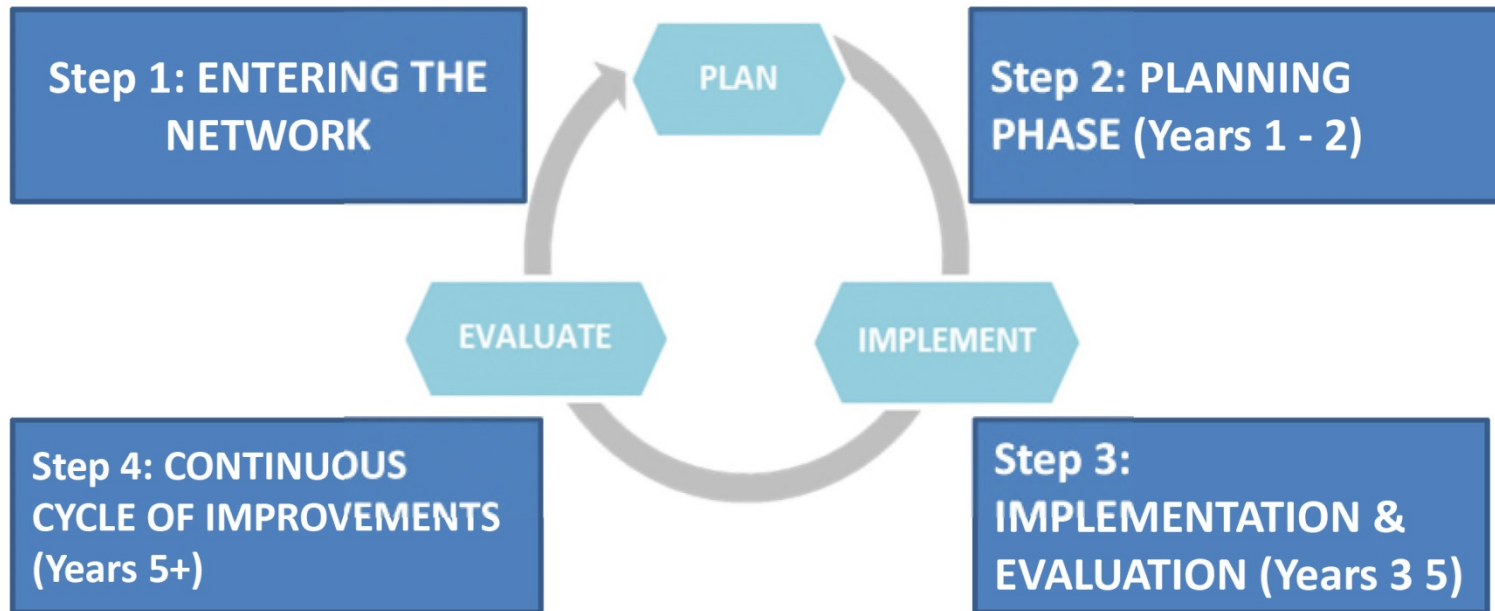
As seniors make decisions about living options, we have different needs. Many of us discovered long waiting lists at the senior independent living apartments as well as assisted living.



We hope there will be options available when we need them.

Some of us want to remain in our homes and plan to use Home Care options for as long as we can. Support from neighbors and the community is important.

# Age Friendly Process



*Join us!*

## Partners of Age Friendly Northfield

- Northfield Hospital
- Northfield Senior Center
- Northfield Retirement Community
- Three Links
- Northfield Chamber of Commerce
- *And many more to come!*

# How the City of Northfield can help:

1. Join the Age-Friendly Partnership,
2. Issue the Proclamation, and
3. Work Together Collaboratively to Build Age-Friendly Northfield!

Thank you to our focus group:

Gail & Bob Craig, Gordon Kelley, Ruth Johnson-Wurth