

NORTHFIELD BRIDGE SQUARE

Heritage Preservation Committee Design Update



DF/ DAMON FARBER



Bob Close &
Bruce Jacobson

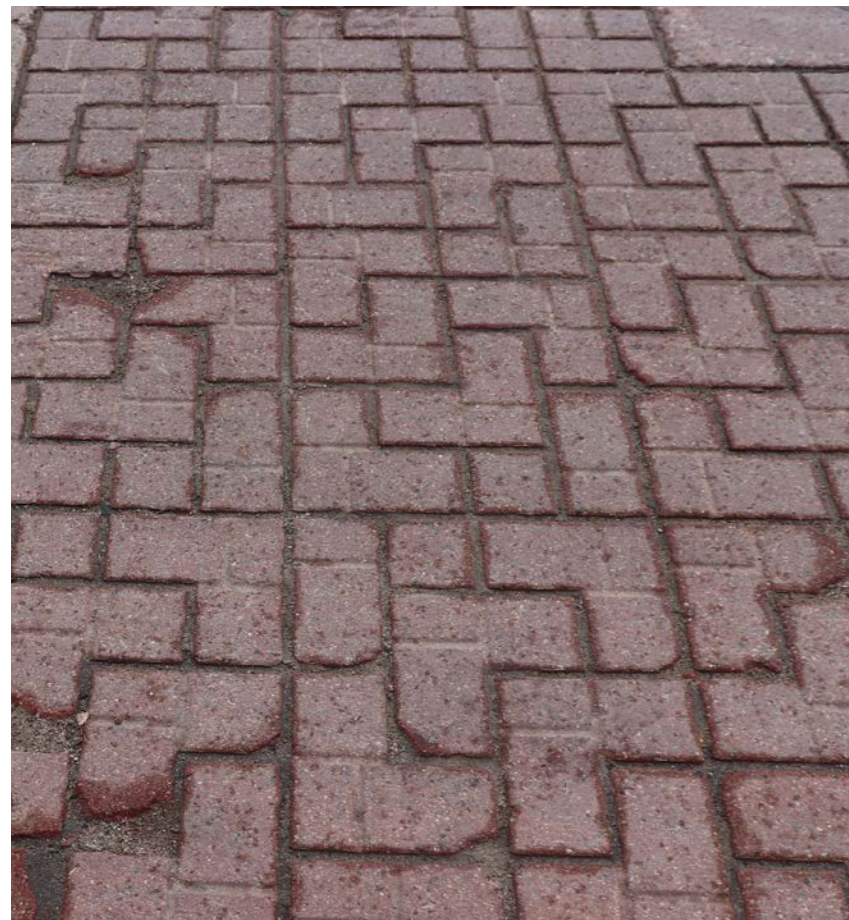


Dec 06
2023

important dates

- 01 Commission Meetings - May
- 02 Internal 45% Check Set - May 25th
- 03 Phase 1 Review w/ 106 Group - June 20th
- 04 Design Meetings - City of Northfield - June - August
- 05 Mayor & City Council Update - August 8
- 06 60% Documentation Final - October
- 07 Open Houses / Stakeholder Engagement - October
- 08 Cost Estimate - End of 60% - November
- 09 SHPO 60% Submittal - November
- 10 Heritage Preservation Commission - December 6th WE ARE HERE
- 11 Mayor & City Council Update / Approval - January 2024
- 12 Construction Documentation - work towards 90% - start January/February 2024
- 13 90% SHPO Review - April 2024
- 14 90% CD Review / Cost Estimate - May 2024
- 15 100% CDs - Approve Plans - June 204
- 16 Publish Ad for Bid - July 2024
- 17 Bid Opening - July 2024 (two weeks)
- 18 Accept Bids and Award Contract - early August 2024
- 19 Property Owners Meeting - September 2024
- 20 Construction - September 2024 (after DJJD) - Nov 2024;
April 2025 - June 2025

existing conditions



An aerial photograph of a city, likely New Haven, Connecticut, showing a river (Hartford River) flowing through the center. A bridge crosses the river, and various buildings and streets are visible. The image is faded and serves as a background for the text.

DESIGN UPDATES

historic layout



1938



1950

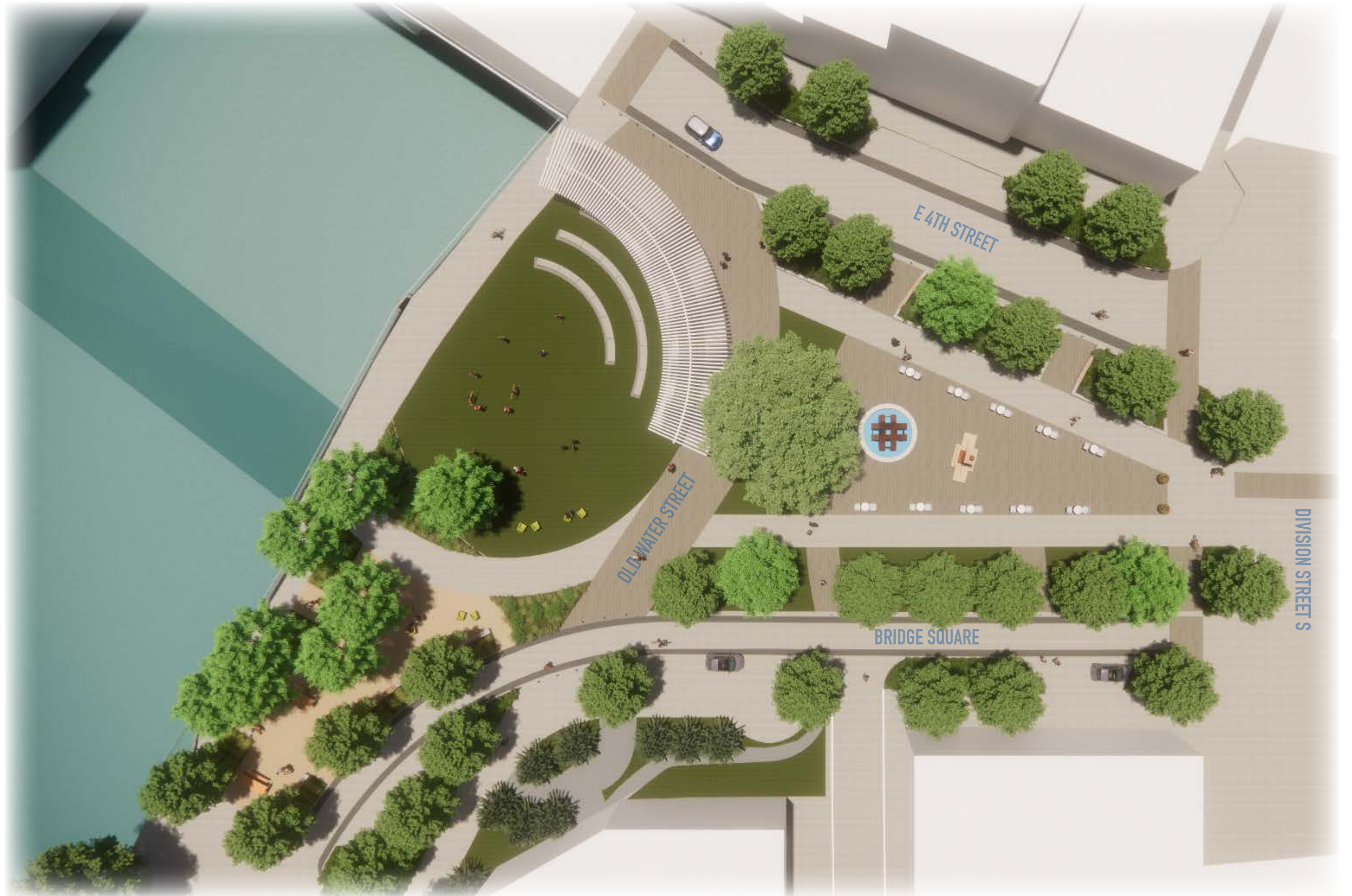


Carleton Digital Collections, early/mid 1940's

historic-status understanding

- Period Of Significance : Designed Historic Landscape + Commerce 1855-1945
- Bridge Square is inventoried as a contributing resource for the Northfield Commercial Historic District
 - Two contributing sites: Bridge Square and Riverside Park
 - One contributing structure: Civil War Monument
- Character defining features could be:
 - Circulation system
 - Spatial Relationships and orientation (asymmetrical triangular perimeter)

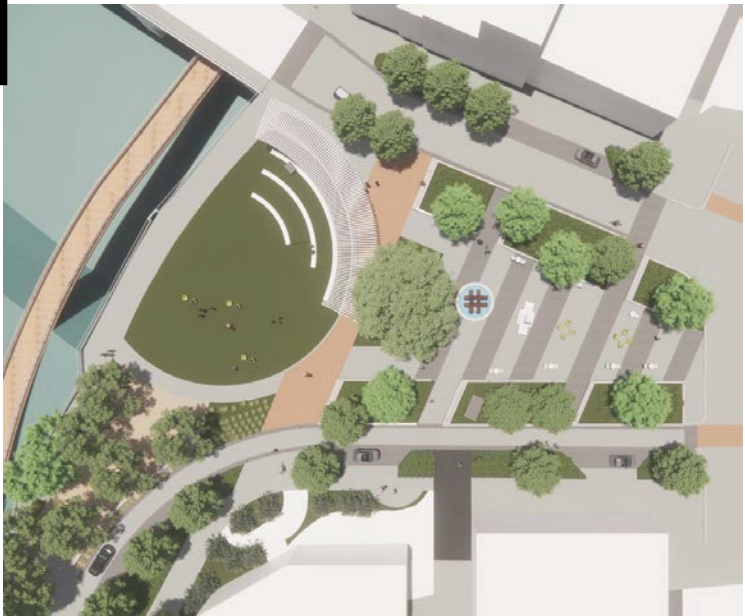
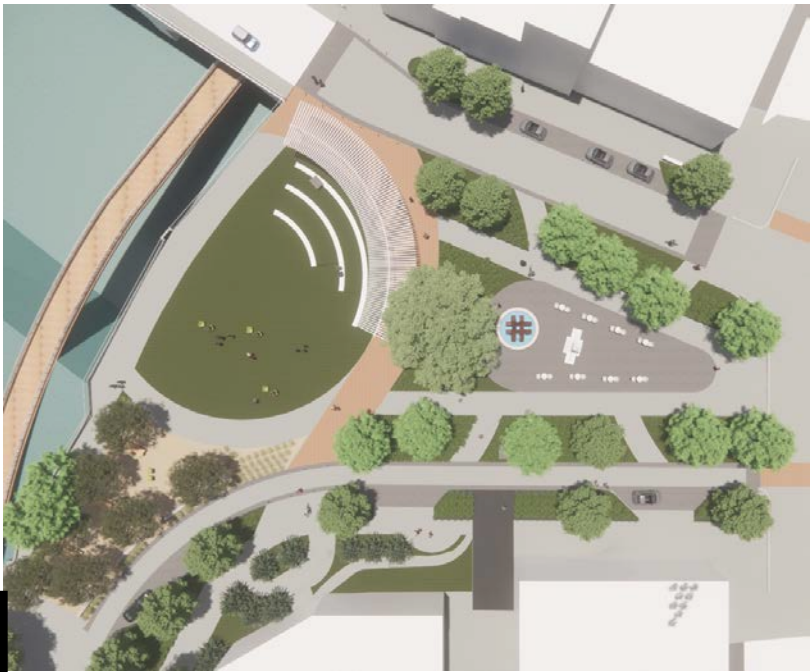
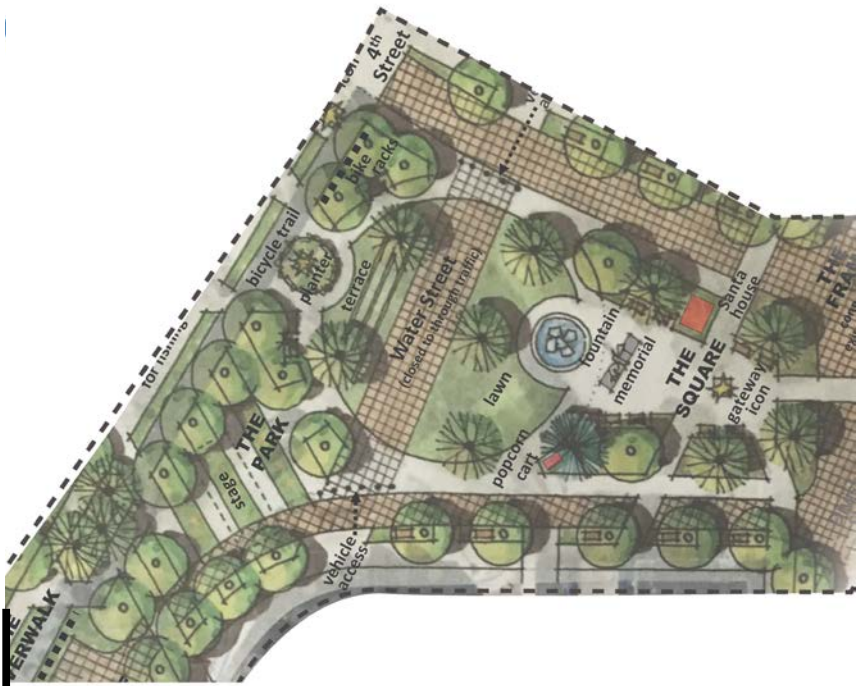
site plan - 45%



SHPO Review Comments/Design Response

- Redesigned site geometry to feature softer edges, current design retains the tiered seating area to emphasize the historic sweep of the Water Street corridor
- Altered Riverside Park's shape for a more organic feel, moving away from a semicircular layout.
- Eliminated the pergola
- Design retains the evolved 'teardrop' shape. The central, paved area of the current design directly referenced the teardrop shape developed from the 1916 park design.
- Simplified the selection of paving materials to minimize visual complexity.
- Simplified the east end of the site by removing planting beds for a cleaner appearance.
- Kept planting beds along the north and south perimeters of Bridge Square to ensure public safety. These beds, essential due to the removal of curbs for enhanced accessibility, will act as a barrier from vehicular traffic. Non-lawn landscape elements will have a low massing for unobtrusiveness.

historical preservation update



site plan



tree protection



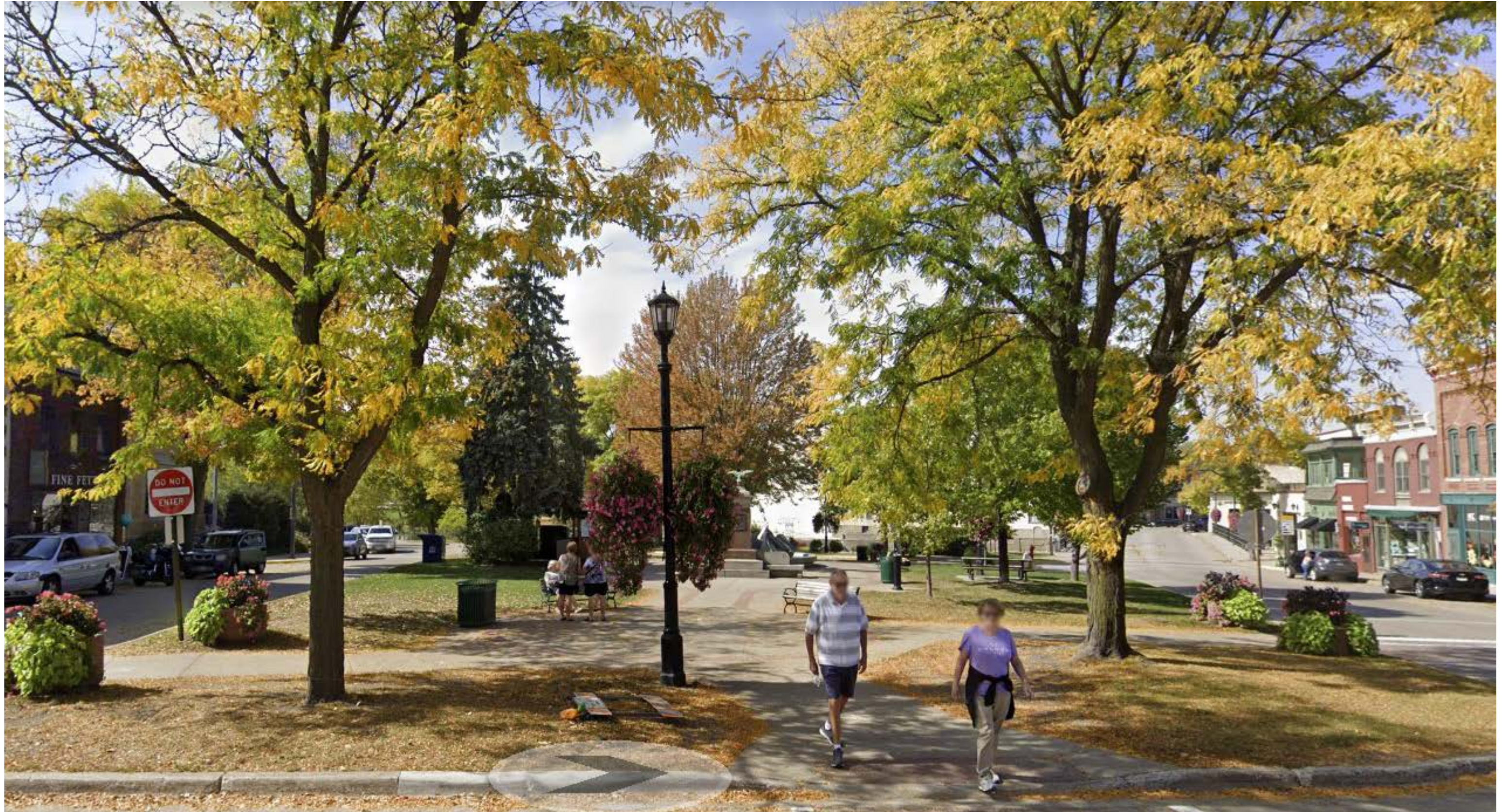
facing downtown



facing the river



view to river- existing



view to river



plantings



-  **Shade Tolerant Lawn**
-  **Streetscape Planters**
 - Echinacea purpurea/ Coneflower*
 - Liatris aspera/ Rough Blazing Star*
 - Nepeta x 'Walker's Low'/ Walker's Low Catmint*
 - Rudbeckia fulgida/ Coneflower*
 - Sporobolus heterolepis/ Prairie Dropseed*
-  **Perennial Mix**
 - Allium x "Millenium"/ Millenium Ornamental Onion*
 - Carex pensylvanica/ Pennsylvania Sedge*
 - Geum triflorum/ Prairie Smoke*
 - Monarda didyma/ Bee Balm*
 - Nepeta x 'Walker's Low'/ Walker's Low Catmint*
 - Zizia aurea/ Golden Alexander*
-  **Turf Seed Drought Tolerant Dwarf Fescue Blend**
-  *Baptisia x 'Indigo Spires'/ Indigo Spires Wild Indigo*



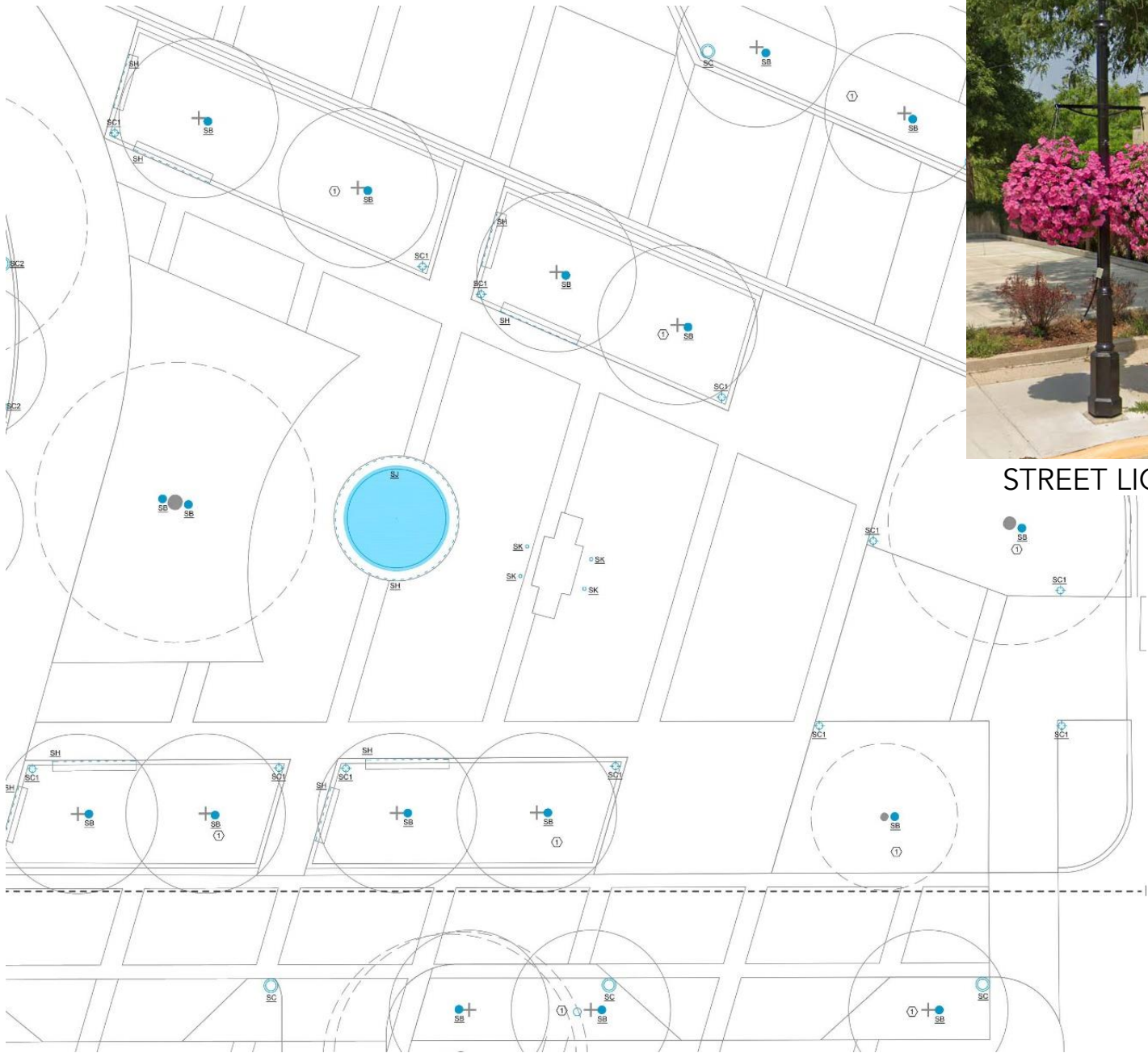
site lighting

LEGEND

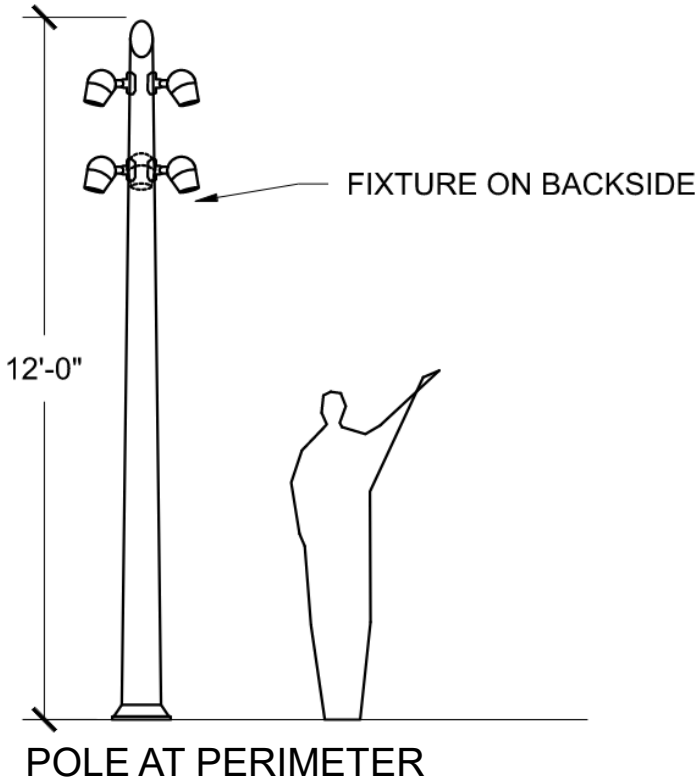
- Integrated Guardrail Lighting
- Pole Lighting
- Landscape Lighting
- Integrated Site Furniture Lighting
- Accent Lighting
- Public Art/Pole Lighting



site lighting



STREET LIGHT



POLE AT PERIMETER



MOONLIGHTING



REPLACE LIGHTING IN FOUNTAIN



UPLIGHT MONUMENT

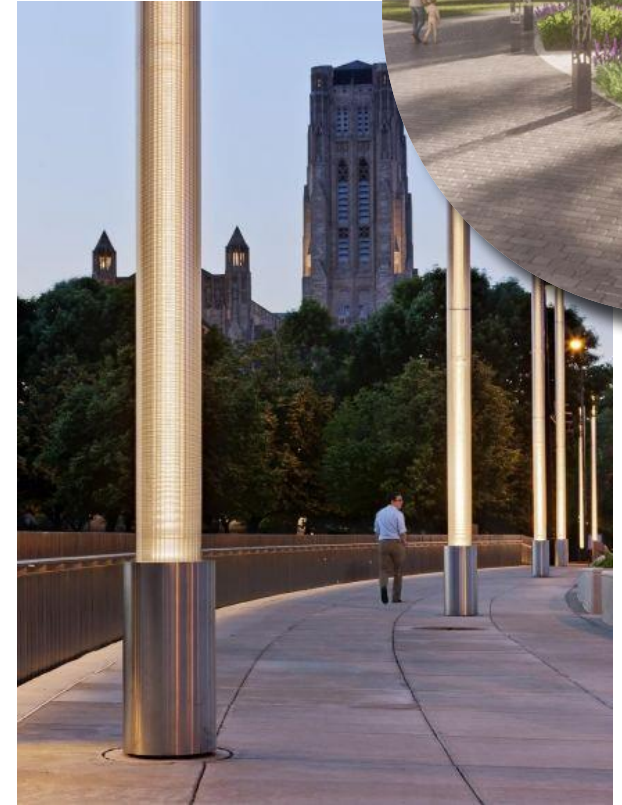
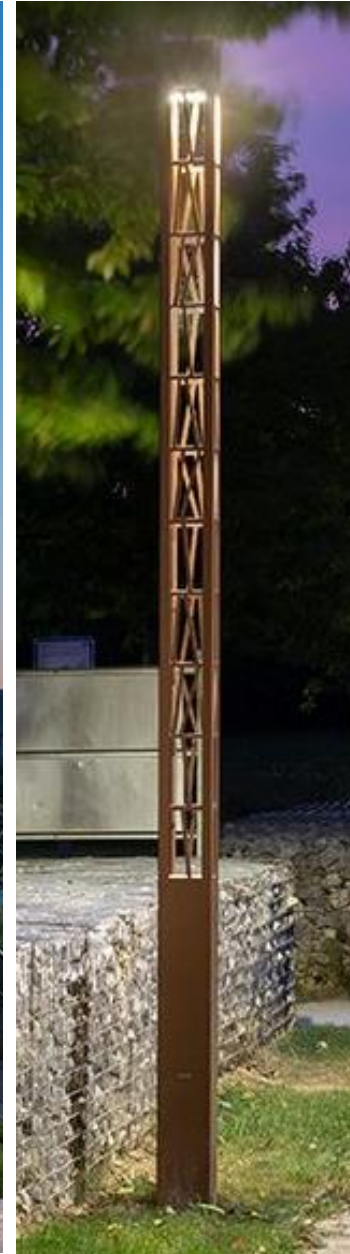
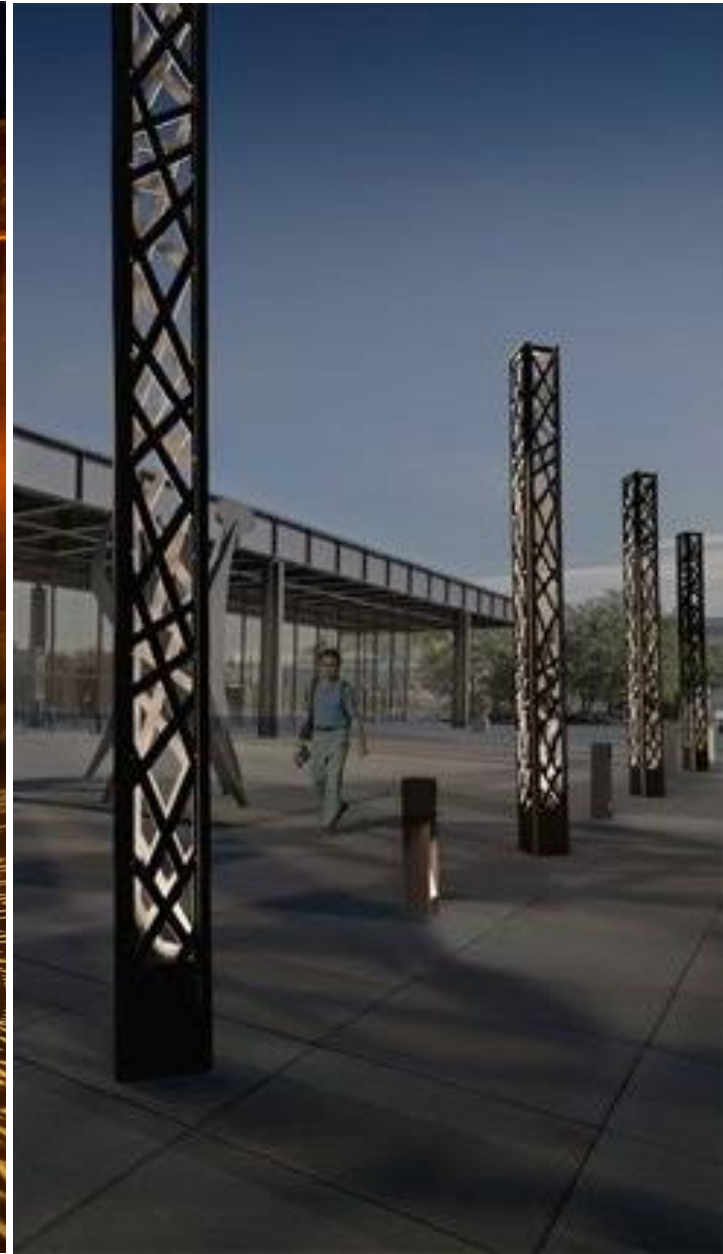


BENCH LIGHTING

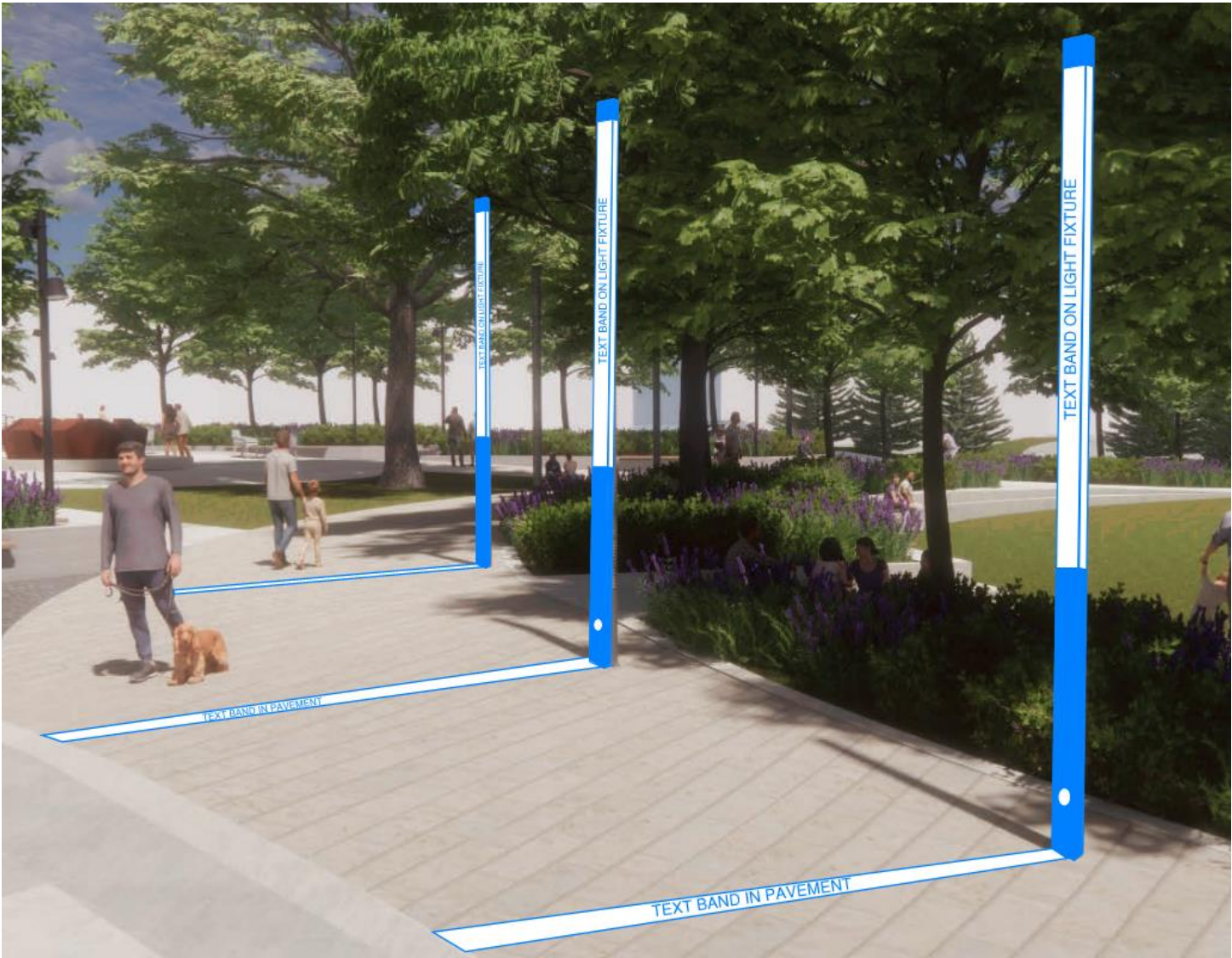
t o d d l a n d r y p h o t o g r a p h y © 2010



INTERNALLY ILLUMINATED COLUMNS



public art



INTERNALLY ILLUMINATED COLUMNS

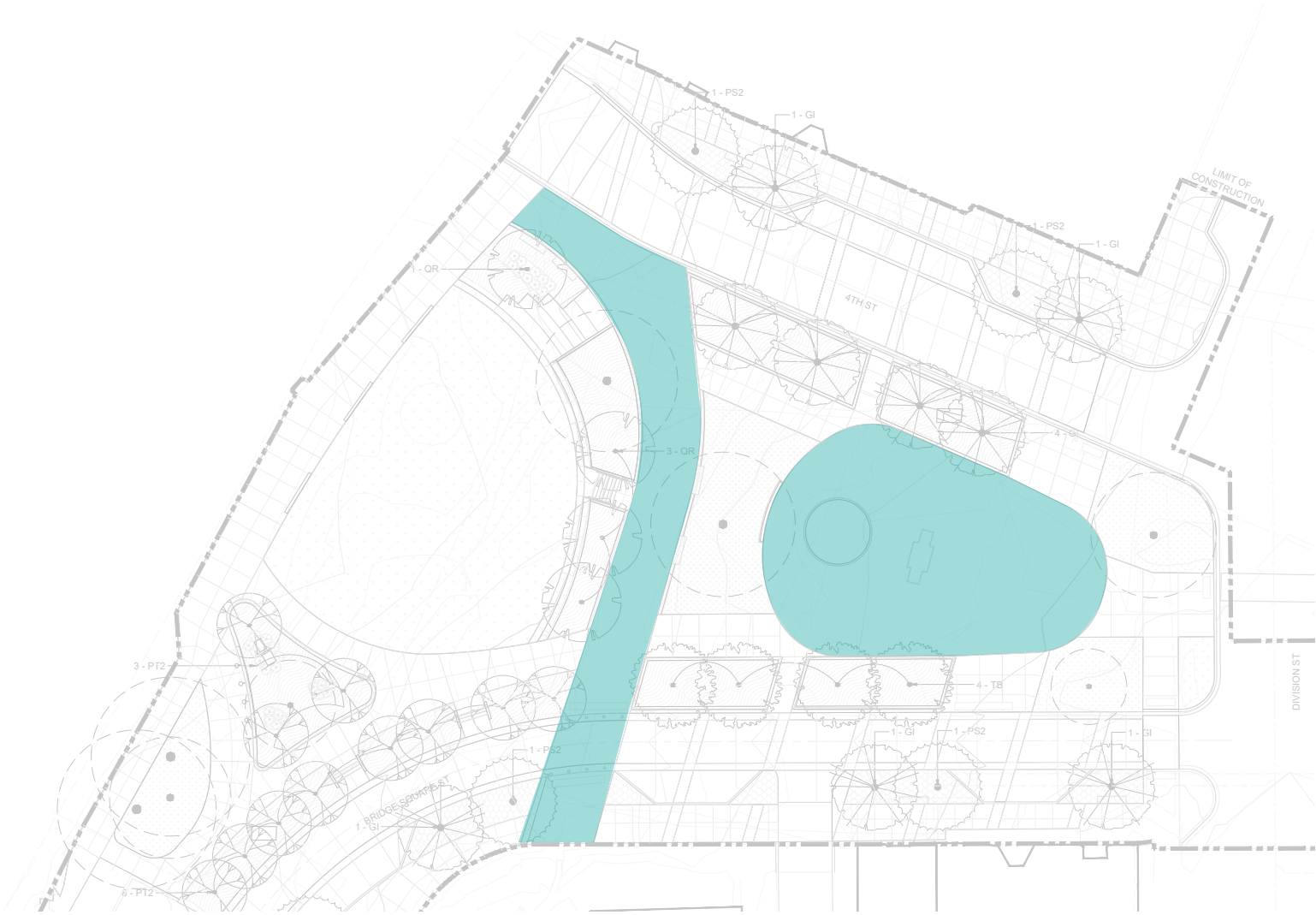


LIGHT GRAZING THE PATH

hardscape materials



topcast concrete - saw-cut edges



pavers options for historic water st and square

important dates

- 01 Commission Meetings - May
- 02 Internal 45% Check Set - May 25th
- 03 Phase 1 Review w/ 106 Group - June 20th
- 04 Design Meetings - City of Northfield - June - August
- 05 Mayor & City Council Update - August 8
- 06 60% Documentation Final - October
- 07 Open Houses / Stakeholder Engagement - October
- 08 Cost Estimate - End of 60% - November
- 09 SHPO 60% Submittal - November
- 10 Heritage Preservation Commission - December 6th WE ARE HERE
- 11 Mayor & City Council Update / Approval - January 2024
- 12 Contruction Documentation - work towards 90% - start January/February 2024
- 13 90% SHPO Review - April 2024
- 14 90% CD Review / Cost Estimate - May 2024
- 15 100% CDs - Approve Plans - June 204
- 16 Publish Ad for Bid - July 2024
- 17 Bid Opening - July 2024 (two weeks)
- 18 Accept Bids and Award Contract - early August 2024
- 19 Property Owners Meeting - September 2024
- 20 Construction - September 2024 (after DJJD) - Nov 2024;
April 2025 - June 2025



DF/ DAMON FARBER



Bob Close &
Bruce Jacobson