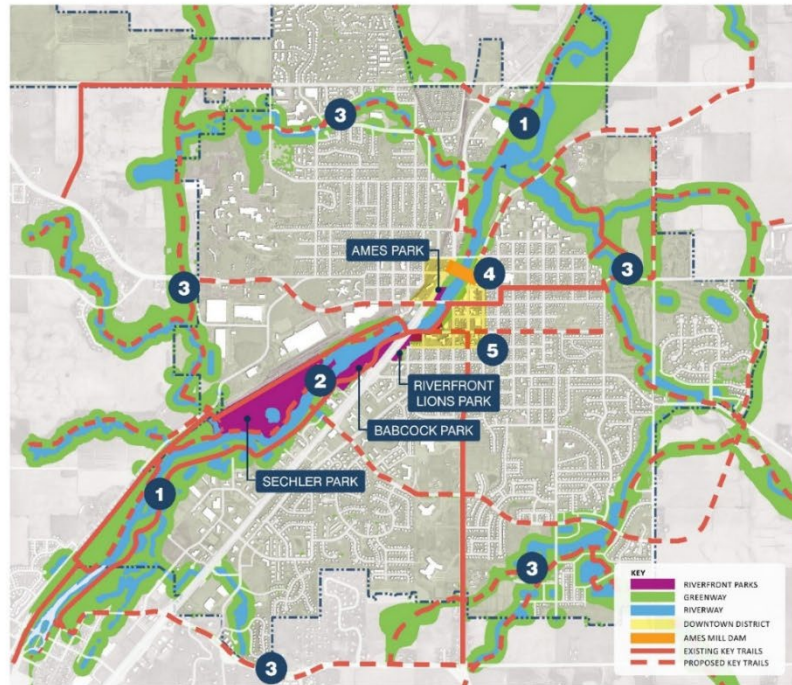


Quick Overview – Planning Framework
Quick Overview – Community Engagement
Focus on Implementation – What have we learned so far?
Example 1 – Riverfront Enhancement Action Plan
Example 2 – Equity Action Plan
Example 3 – Climate Action Plan
Example 4 – Central Riverfront Master Plan
Relationship to the Comprehensive Plan Process

NORTHFIELD'S CANNON RIVER REGIONAL PARK EXPERIENCE



City of
Northfield
Minnesota

ESTABLISH

ENHANCE

COMPLETE

PROMOTE

ESTABLISH NORTHFIELD'S CANNON RIVER REGIONAL PARK

Northfield is on the cusp of making a tremendous opportunity to build on the four connected park parcels in the town for a unified Regional Park Master Plan. This will focus on environmental restoration, recreation and connectivity to the historic downtown and regional park experience. With potential partners including nearby cities, the State of Minnesota, and the Cannon River Watershed Partnership, Northfield is well-positioned to apply for funding as a Regional Park or Greater Riverfront.

Immediate Actions:

- Begin the application process with the goal of submitting by the June 30th, 2021 deadline.

ENHANCE + ACTIVATE YOUR RIVERFRONT PARKS

Key to a successful application as an exciting, characterful regional park is the vibrant scene featuring a variety of recreational opportunities that create a true destination. The four city parks in Northfield have very distinct identities, based on location, history, and recreational potential. With a common focus on the Cannon River, complemented by the historic downtown and other nearby assets, Northfield's four parks are the cornerstone of a compelling, new recreational and ecologically restored system.

Immediate Actions:

- Develop all elements of Ames Park as a first priority
- Start planning for river and building at Babcock Park
- Renovate relocation of roads and bridge from Babcock Park
- Develop canoe/kayak access

COMPLETE YOUR LOCAL + REGIONAL TRAIL SYSTEM

As important as the distinct qualities found within the four city owned parks are the connections between them and to the larger regional trail system. It is necessary that the system of trails in the Cannon Valley and beyond connect and the most beautiful, diverse and extensive systems in the region. Missing links within the city borders should be identified, safe, local connections to nearby city borders should be identified, and the system should be developed for local and visitor alike.

Immediate Actions:

- Plan/Install a comprehensive wayfinding system
- Connect trails to Sechler Park
- Complete the Mill Stream State Trail
- Add a new trail to downtown bridge
- Allow temporary trail on City land along west side of river

EXPLORE AMES MILL DAM RECONSTRUCTION OPTIONS

There is excitement building around the possibility that the Ames Mill Dam might play an important role in reinforcing the health, community and variety of the Cannon River State Water Trail. Designated as a wild and scenic river, the Cannon still suffers from environmental degradation and human intervention. The Ames Mill Dam, admittedly an attractive feature downtown, inhibits the natural processes of the river and limits recreational possibilities. A reconstruction of the existing dam has the potential to be both a restorative feature and significant recreational regional attraction.

Immediate Actions:

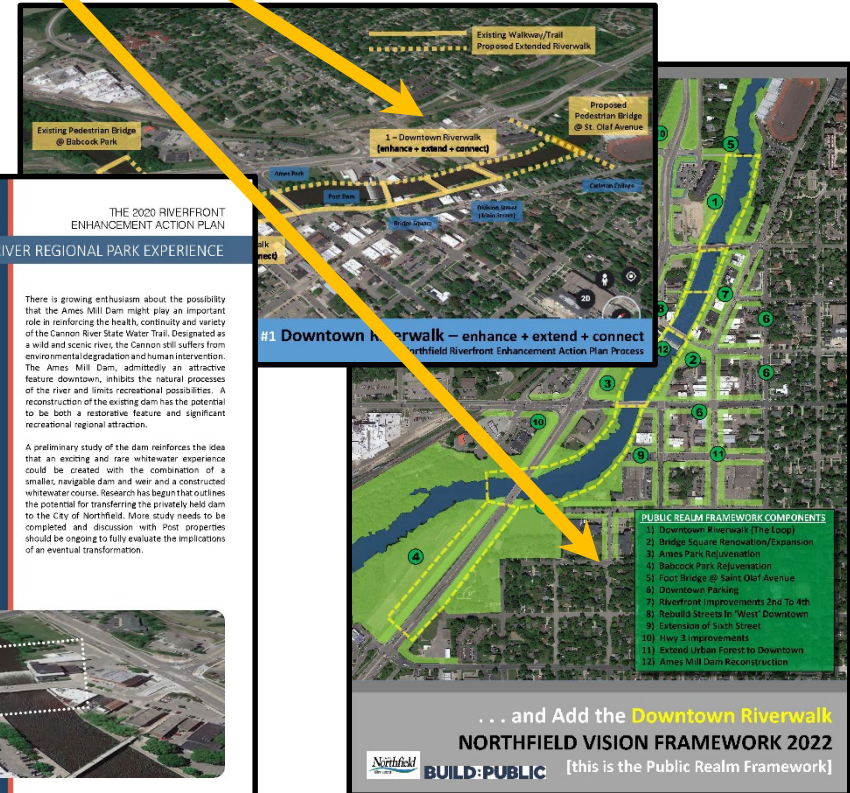
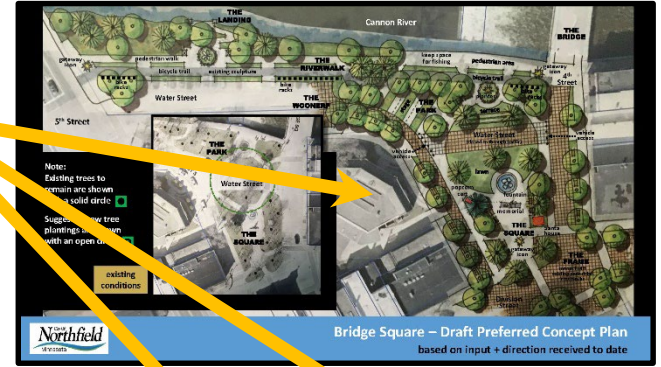
- Conduct the study recommended by DNR staff
- Assess alternatives for the future of the dam
- Apply for grant funding (design + construction)

PROMOTE ECONOMIC DEVELOPMENT + TOURIST DESTINATION

Northfield is a beautiful and thriving community, possessing attributes that make it an attractive destination for visitors. The city has the opportunity to build on its historic and scenic assets to become a premier destination for recreation, culture, and tourism. But, this effort is not simply a park plan. It is also an economic development strategy that benefits both the local economy and creates a regional destination. Proposed park improvements must align with broader Regional Park Master Plan objectives.

Immediate Actions:

- Explore incentives to improve river-side of downtown buildings
- Work with local businesses on pilot projects
- Apply for grant funding

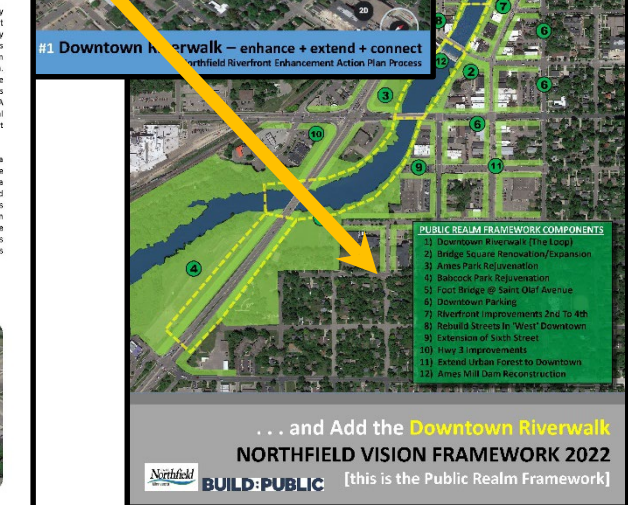


AMES MILL DAM RECONSTRUCTION FEASIBILITY STUDY



There is growing enthusiasm about the possibility that the Ames Mill Dam might play an important role in reinforcing the health, continuity and variety of the Cannon River State Water Trail. Designated as a wild and scenic river, the Cannon still suffers from environmental degradation and human intervention. The Ames Mill Dam, admittedly an attractive feature downtown, inhibits the natural processes of the river and limits recreational possibilities. A reconstruction of the existing dam has the potential to be both a restorative feature and significant recreational regional attraction.

A preliminary study of the dam reinforces the idea that an exciting and rare whitewater experience could be created with the combination of a smaller, navigable dam and weir and a constructed whitewater course. Research has begun that outlines the potential for transferring the privately held dam to the City of Northfield. More study needs to be completed and discussion with Post properties should be ongoing to fully evaluate the implications of an eventual transformation.



... and Add the **Downtown Riverwalk**
NORTHFIELD VISION FRAMEWORK 2022
BUILD:PUBLIC [this is the Public Realm Framework]

THE RIVERFRONT ENHANCEMENT ACTION PLAN
adopted by Mayor and City Council in 2020

PRIVATE DEVELOPMENT OPPORTUNITIES

- 1) Archer Hotel
- 2) Liquor Store
- 3) Riverfront Site
- 4) Kraus Anderson Rework
- 5) Post Office Site
- 6) SW Corner 2nd/Division
- 7) MnDOT Site
- 8) Parking/res SW Corner 3rd/Washington
- 9) Parking/res NW Corner 5th/Washington
- 10) SE Corner 2nd/Highway 3
- 11) Q Block

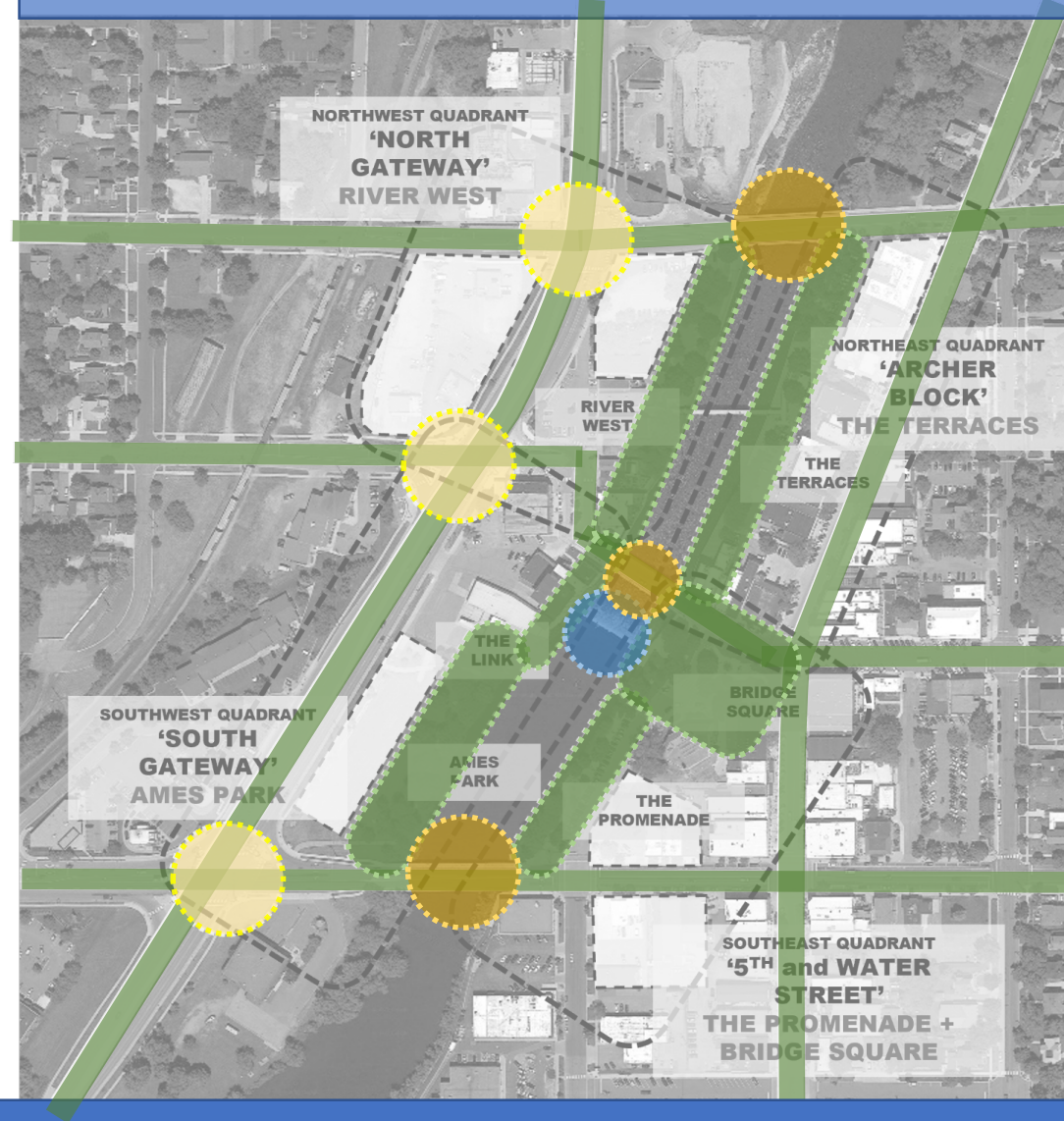
TAKING A CLOSER LOOK AT
YOUR CENTRAL RIVERFRONT

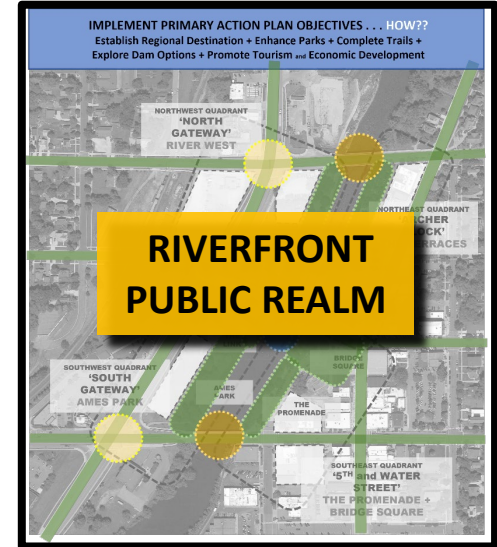
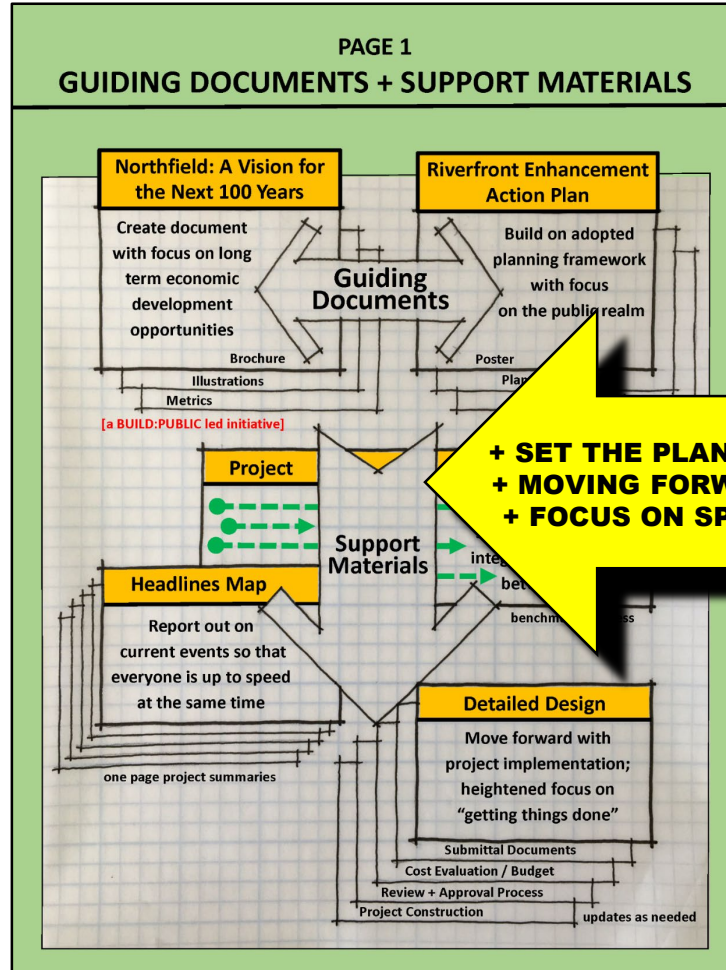
PUBLIC REALM FRAMEWORK COMPONENTS

- 1) Downtown Riverwalk (The Loop)
- 2) Bridge Square Renovation/Expansion
- 3) Ames Park Rejuvenation
- 4) Babcock Park Rejuvenation
- 5) Foot Bridge @ Saint Olaf Avenue
- 6) Downtown Parking
- 7) Riverfront Improvements 2nd To 4th
- 8) Rebuild Streets In 'West' Downtown
- 9) Extension of Sixth Street
- 10) Hwy 3 Improvements
- 11) Extend Urban Forest to Downtown
- 12) Ames Mill Dam Reconstruction

Establish Regional Destination + Enhance Parks + Complete Trails + Explore Dam Options + Promote Tourism and Economic Development

**Establish Regional Destination + Enhance Parks + Complete Trails +
Explore Dam Options + Promote Tourism and Economic Development**





NORTHFIELD COMMUNITY ENGAGEMENT PROCESS

Outreach List of Groups and Individuals (updated 27 April 2023)

Mayor and City Council – Special Workshops + Regular Meetings
Historic Preservation Commission – Special Workshops + Regular Meetings
Planning Commission – Special Workshops + Regular Meetings
Betsy Buckheit and Tracy Davis Heisler (Planning Commission Members)
Environmental Quality Commission – Special Workshops + Regular Meetings
Parks and Recreation Advisory Board – Regular Meetings
Development Review Committee
Racial Equity Core Team
City Staff + Departments
Youth on Boards
Fire Chief Tom Nelson
Public Art Discussion – Meeting + Site Walk with Molly and Natalie
Radio Station KYMN

Round 1 – Business/Property Owner ‘Quadrant Workshops’ (four meetings)
Round 1 – Public Open Houses (3 events – Library, Greenvale School, 50 North)

Carleton College
Saint Olaf College
Northfield School Superintendent – Matt Hillman
Baird Jarman – Instructor at Carleton College
Sara Swan McDonald – Instructor at Northfield High School

DJJD Committee and ‘Working Group’ – Workshops + Site Walks
Riverwalk Marketfest – Meetings + Site Walks
Vintage Band – Meetings + Site Walks
Lions Club – Regular Meeting + Site Walk
Rotary Club
Chamber of Commerce
Roundtable
Open Table
Garden Club
Clean River Partners
Friends of Northfield
Age Friendly Northfield
MnDOT
Splash Pad Group

Michael Lander/Build Public Development Team (5th and Water Street Properties)
Rebound Development Team (Archer Property)
Futures North Public Art Discussion
CHS/Terri O’Conner Mobility (+ parking) Study
Jon Commers Economic Evaluation
Barr Engineering Team – Ames Mill Dam Reconstruction Study
Jayson Bowerman – White Water Specialists

Miscellaneous Business Owner + Northfield Citizen Meetings (in no particular order):

Post Consumer Brands
Nutting Block
Dave Hvistendahl (Property Owner)
Dave Ludescher (Property Owner)
Dave Neuger (Property Owner)
Rick Estenson and Fred Rogers
Dale Finger (Quarterback Club)
Greg and Brianna (Farmstead Bike Shop)
Lucinda Gonzalez Miron and Angelica (last name please)
Miguel (El Triunfo)
Loon Distillery
Eric Johnson (Bike Advocate)
Devin Johnson (Property Owner)
Norm Oberto (Past Co-Chair of Action Plan Committee)
Brent Dack (Property Owner)

Ongoing Outreach Focus – the Equity Outreach Plan (see attached draft – 25 April 2023)

Draft Organization and Contact List (where we are heading with further outreach/engagement):

- Human Rights Commission
- Healthy Community Initiative (Jennifer Varrientos)
- Growing Up Healthy (Laura Garcia and Leslie Limon)
- Community Action Center
- Rice County Neighbors United (Mar Valdecantos)
- Emmaus and St. Dominicks Church
- Community Resource Center (Veronica Gambino and Lucy Gonzalez Miron)
- Viking Terrace ‘Board’ (Jorje and others)
- Northfield Community College
- Northfield Community Education Center (we had a tour; now need to meet with staff)
- Hiawatha Line (begin more detailed discussion about transit improvements)
- What/who else needs to be on this list??

**WHERE WE’VE BEEN . . .
AND WHERE WE’RE GOING**



COMMUNITY ENGAGEMENT PROCESS

sharing the same information with everyone + gathering input from many participants



4 BUSINESS + PROPERTY OWNER WORKSHOPS [DIVIDED INTO 4 QUADRANTS PER DIAGRAM]



DOWNTOWN PUBLIC LIBRARY



GREENVALE ELEMENTARY SCHOOL



FIFTY NORTH SENIOR CENTER



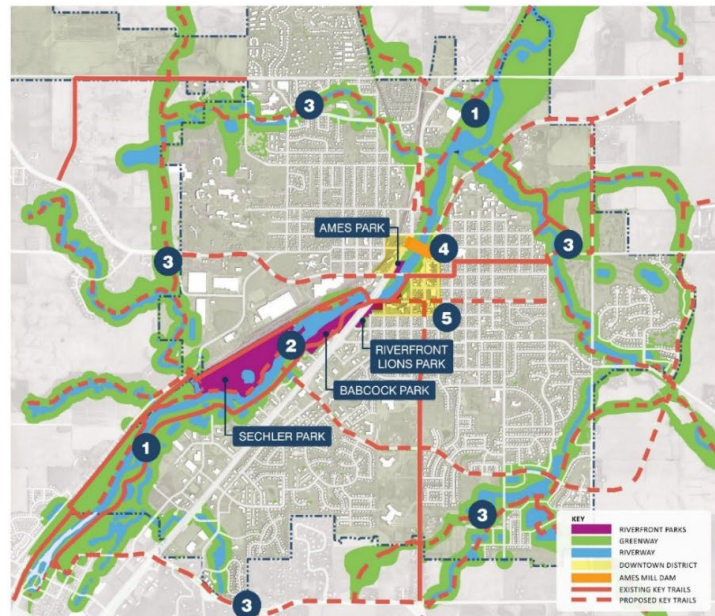
3 PUBLIC OPEN HOUSES
[FACILITATED IN 3 DIFFERENT LOCATIONS AROUND NORTHFIELD]

DISCUSSION BEGAN WITH BRIDGE SQUARE . . .



NORTHFIELD'S CANNON RIVER REGIONAL PARK EXPERIENCE

THE 2020 RIVERFRONT ENHANCEMENT ACTION PLAN



City of Northfield Minnesota

ESTABLISH

ESTABLISH NORTHFIELD'S CANNON RIVER REGIONAL PARK

Northfield is in the zone of making a commitment responsibility to build on the local riverfront. The park experience is the heart of the community. The local riverfront is a natural resource that is a key to the community's future. The local riverfront is a natural resource that is a key to the community's future. The local riverfront is a natural resource that is a key to the community's future.

Immediate Action: Begin the acquisition process with the goal of submitting by the June 30th, 2022 deadline.

2 ENHANCE + ACTIVATE YOUR RIVERFRONT PARKS



Key to a successful experience as a riverfront park is the ability to activate the park. The park experience is the heart of the community. The local riverfront is a natural resource that is a key to the community's future. The local riverfront is a natural resource that is a key to the community's future. The local riverfront is a natural resource that is a key to the community's future.

Immediate Action: Develop all elements of Ames Park as a first priority. Start planning for multi-use building at Babcock Park. Review acquisition of Ames and Babcock Riverfront Parks. Develop canoe/kayak water access.

COMPLETE

COMPLETE YOUR LOCAL + REGIONAL TRAIL SYSTEM

As important as the district quality found within the four city owned parks are the connections between them and the larger regional trail system. By recognizing that the quality of trails in the Cannon River and beyond connects one the most beautiful, diverse and vibrant communities in the state, Northfield should be committed to safe, high-quality connections to surrounding neighborhoods and to the regional trail system. The local riverfront is a natural resource that is a key to the community's future. The local riverfront is a natural resource that is a key to the community's future. The local riverfront is a natural resource that is a key to the community's future.

Immediate Action: Develop a comprehensive trail system. Connect Ames Park to Sechler Park. Connect Ames Park to Babcock Park. Build a trail to the downtown bridge. Build a trail to the downtown bridge. Build a trail to the downtown bridge.

4 EXPLORE AMES MILL DAM RECONSTRUCTION OPTIONS



There is a potential building around the possibility that the Ames dam might play an important role in restoring the health, connectivity and beauty of the Cannon River State Park. The dam is a key to the community's future. The local riverfront is a natural resource that is a key to the community's future. The local riverfront is a natural resource that is a key to the community's future.

Immediate Action: Conduct a feasibility study recommended by Jack Hall. Develop a plan for the dam. Apply for grant funding (Design + Construction).

PROMOTE

PROMOTE ECONOMIC DEVELOPMENT + TOURIST DESTINATION

Northfield is a beautiful and thriving community, attracting attention from many communities around the state. The city has the opportunity to build on its historic and scenic assets to become a top tourist destination for the region. The local riverfront is a natural resource that is a key to the community's future. The local riverfront is a natural resource that is a key to the community's future. The local riverfront is a natural resource that is a key to the community's future.

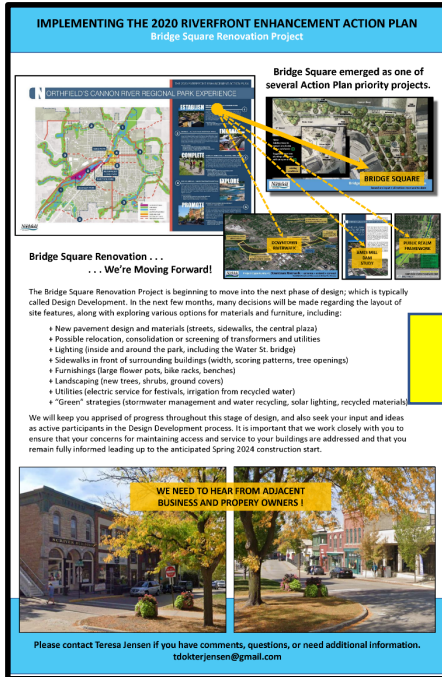
Immediate Action: Explore a downtown to improve downtown buildings. Work with local and state businesses on grant projects. Apply for grant funding.

Bridge Square – Draft Preferred Concept Plan
based on input + direction received to date

EXAMPLE 1 – IMPLEMENT THE RIVERFRONT ENHANCEMENT ACTION PLAN

Directive: Enhance + Activate Your Riverfront Parks

WHICH LED TO . . .

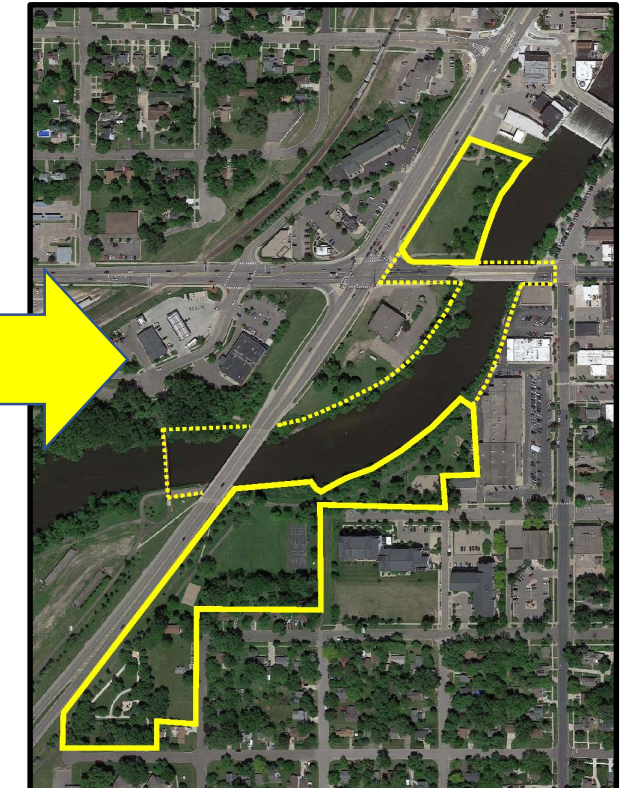


Flyers + meetings with property owners adjacent to Bridge Square

Meetings with DJJD to explore ideas + options to support their yearly event – making sure that everything fit in the new plan

Meetings to explore highest and best use of Ames Park – probable future relocation of the DJJD Carnival

WHICH LED TO . . .

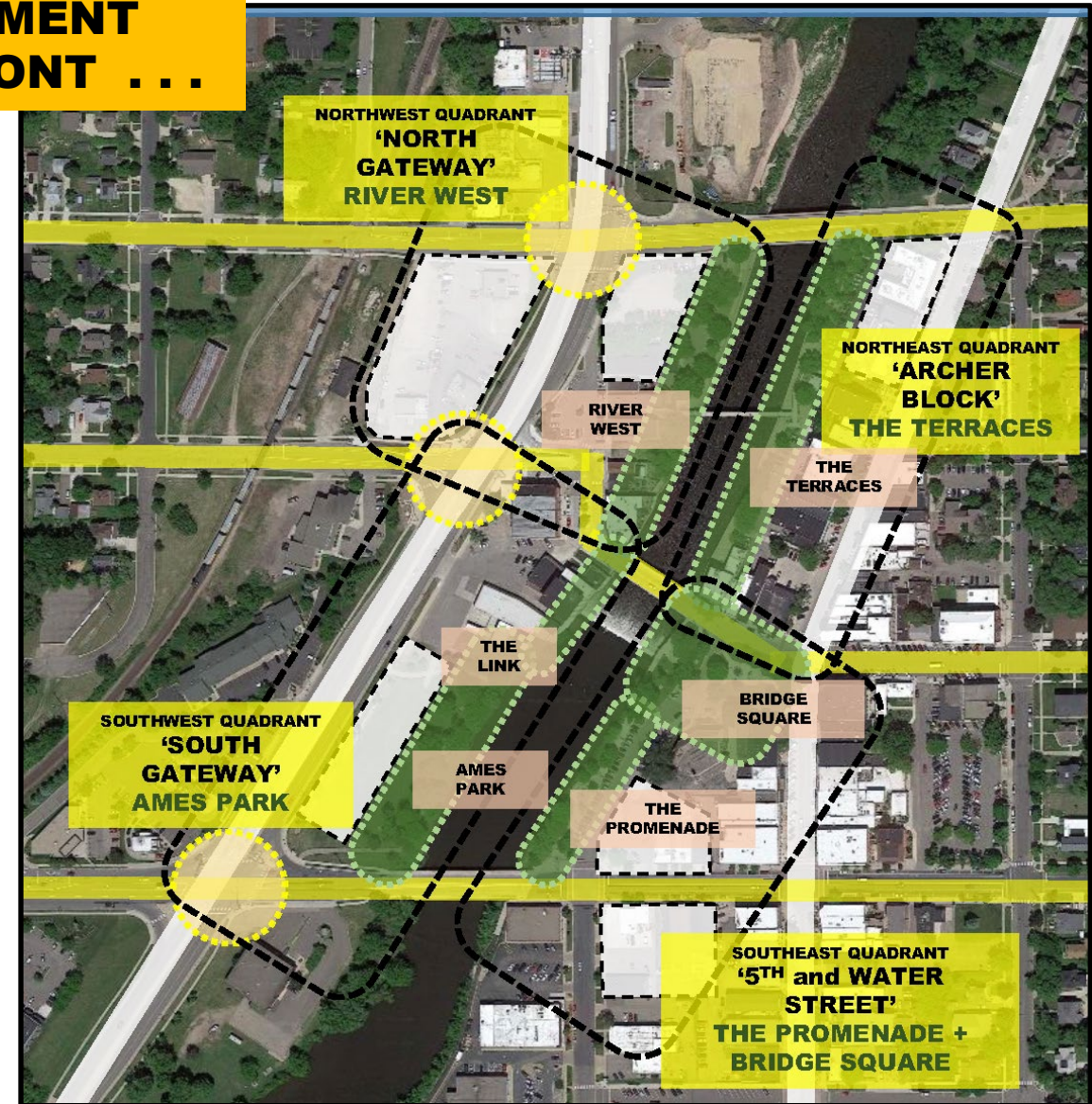
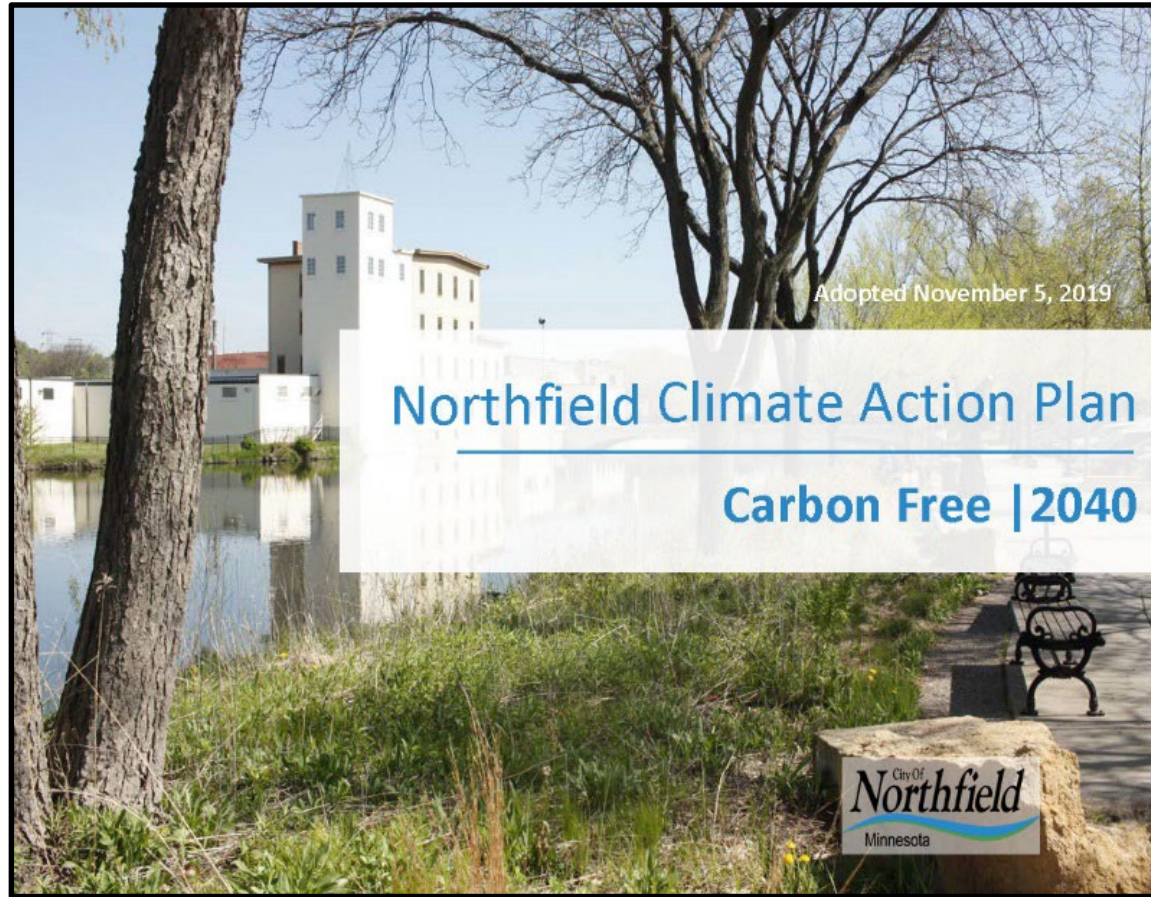


Meeting + site walk with Lions Club to hear ideas about park program and concerns about proposed Splash Pad

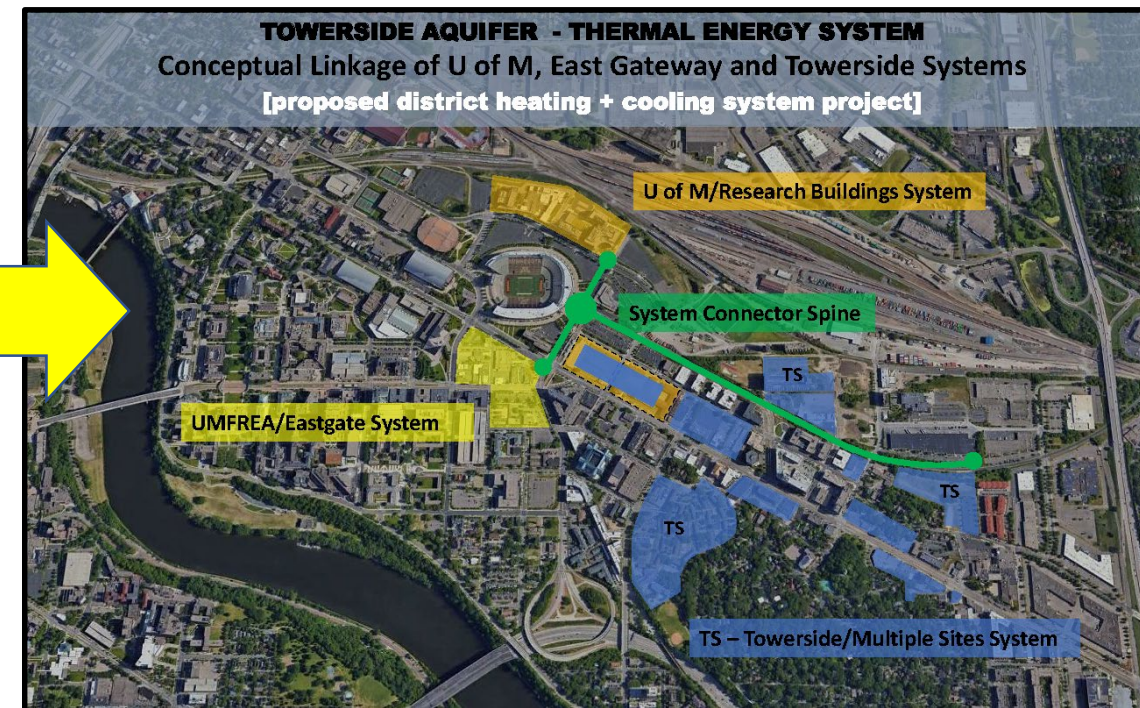
Action Plan – 'ENGAGING NEIGHBORHOOD AMENITY'
More than any of the other parks, Riverside Lions Park is embedded in the neighborhood context; meeting needs of a varied constituency with a variety of smaller venues.

Set the stage to proceed with Concept Design Process for both Riverside Lions and Ames Park

DISCUSSION BEGAN WITH THE NEW DEVELOPMENT OPPORTUNITIES ALONG THE CENTRAL RIVERFRONT ...



WHICH LED TO . . .



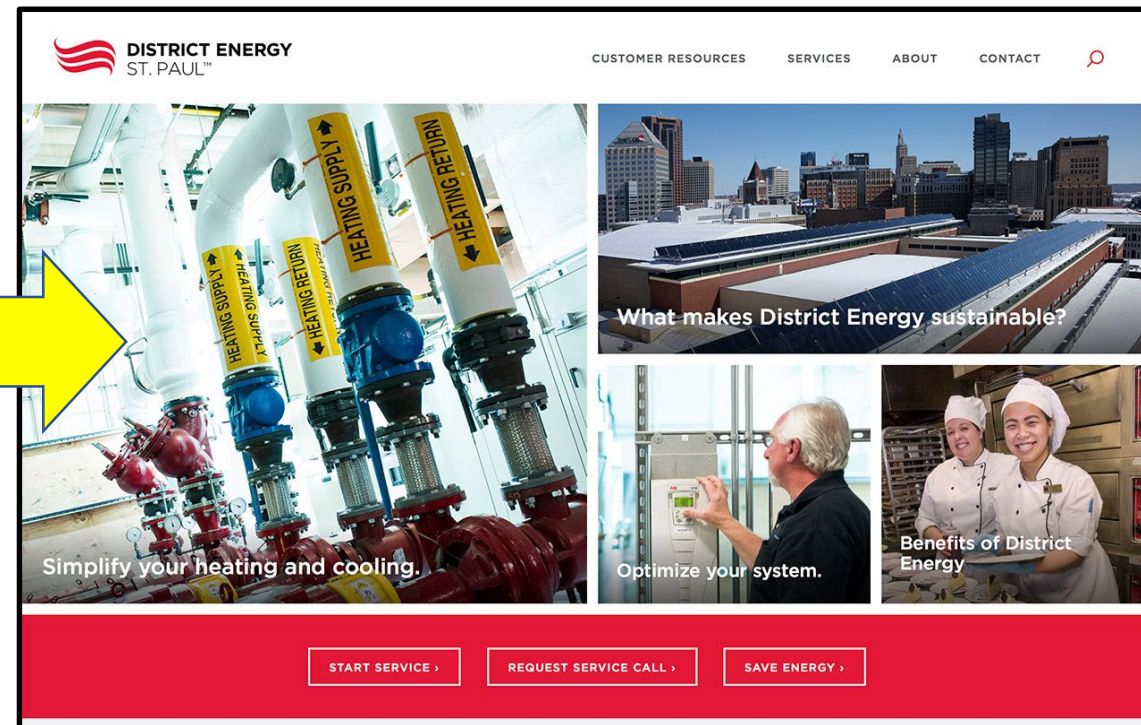
Facilitated EQC + Climate Advocates Workshop

- + Establish 'Work Groups' to focus on Action Plan Topic Areas
- + Recommendations related to Central Riverfront redevelopment
- + Prepare one-page summary of Climate Action Plan objectives

'District System' approach to Central Riverfront
infrastructure – initial exploration of similar projects
(who, what, where, how?)

EXAMPLE 2 – IMPLEMENT THE NORTHFIELD CLIMATE ACTION PLAN
Directive: Influence Planning and Design + Inform Project Review and Approval Process

WHICH LED TO . . .



Explore opportunities to link with/expand the existing (recently installed) geothermal heating and cooling system at Carleton College

Received a proposal to evaluate district energy system FEASIBILITY focused on the Central Riverfront and other potential system users



EXAMPLE 2 – IMPLEMENT THE NORTHFIELD CLIMATE ACTION PLAN
Directive: Influence Planning and Design + Inform Project Review and Approval Process

DISCUSSION BEGAN WITH A COMMENT HEARD IN THE JOINT PC + HPC WORKSHOP – “WHO IS THIS FOR?” . . .

Northfield Racial Equity Action Plan – adopted 2020

Background: Being a welcoming community and one that embraces a diverse population is important to the City of Northfield. In December 2016 the City Council adopted a policy regarding “employee conduct regarding immigration status”. The purpose was for Northfield to be a vibrant city where our immigrant and refugee residents can fully participate in and be integrated into the social, civic, and economic fabric of their adopted city.

In the 2018-2020 Strategic Plan for the City, the topic of Diversity, Equity and Inclusion (A Community that Welcomes Everyone) was one of the six priority areas. Development of this Racial Equity Action Plan came about as City staff participated in the Government Alliance on Race & Equity (GARE).

Racial Equity Statement: The City of Northfield values all members of our community and recognizes the demographic makeup of our citizens will continue to change. Therefore, the City of Northfield strives to improve outreach and engagement to increase racial equity in the Northfield community. In addition, the City wants to build upon existing policies and procedures to ensure they are equitable for the Northfield community.

Need: The City of Northfield has developed this plan because:

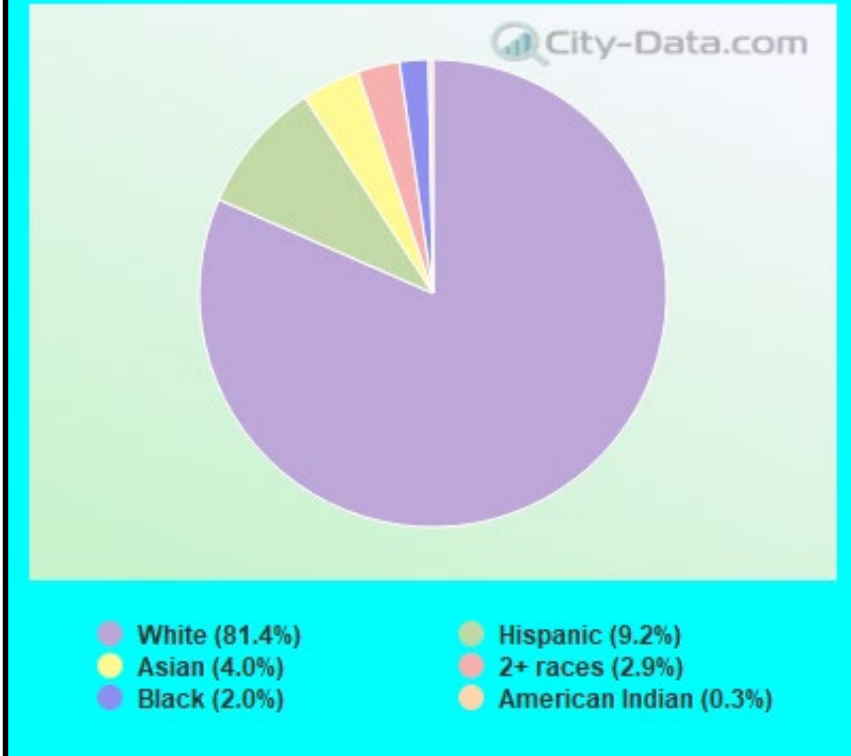
- It is a way to be intentional about institutional culture change.
- It will help us to design strategies to focus improvements. Developing racial equity plans/tools with all departments will help us better include racial equity as a factor in delivery of services and budgeting.
- Institutional racism is something ingrained into the fabric of many institutions in the United States,. For the City, racial equity is about exploring our practices, service delivery and policies to help find ways to make our institution more racially equitable.
- Having a racial equity action plan will keep this work a priority for the City as we carry out our work and create our budgets.

Results – These are community level conditions of well-being we intend to improve. The actions and outcomes in this plan will help to move us towards these results.

1. City of Northfield services are accessible and accessed by all community members.
 - Forms, informational materials and public safety information are easily accessible in the languages used in our community.
 - Translation services are provided for in-person and phone interactions with staff.
 - Improve service delivery and application processes to be simple, convenient and easy to understand.
 - Expand broadband/internet access by working with utility service providers.
 - City Departments, Boards & Commissions take equity into account when evaluating and deciding on projects.
 - City buildings, staff and public meetings are welcoming places where all feel comfortable seeking services and participating in local government.

1

Races in Northfield, MN (2019)



. . . and a recurring statement in various meetings that “some Northfield citizens don’t feel welcome downtown”

INITIAL LIMITED MEETING ATTENDANCE LED TO . . .

THE EQUITY OUTREACH PLAN

Based on a “Trusted Advocates Approach” – directive from City Staff Meeting 3/29/2023
Draft outline – 25 April 2023

OVERVIEW + PURPOSE

[Extracted from the Northfield Equity Action Plan – adopted July 2020]

“Being a welcoming community and one that embraces a diverse population is important to the City of Northfield. The purpose was for Northfield to be a vibrant city where our immigrant and refugee residents can fully participate in and be integrated into the social, civic, and economic fabric of their adopted city.”

[The Equity Action Plan also included the following Racial Equity Statement]

“The City of Northfield values all members of our community and recognizes the demographic makeup of our citizens will continue to change. Therefore, the City of Northfield strives to improve outreach and engagement to increase racial equity in the Northfield community. In addition, the City wants to build upon existing policies and procedures to ensure they are equitable for the Northfield community.”

WORK PLAN INTRODUCTION

In alignment with overall objectives for Community-Wide Engagement Process currently underway, we recognize the need for additional outreach in order to connect with various groups and individuals not typically included (for whatever reason) in ongoing city discussion and decision-making.

Toward that end, the City of Northfield has requested, and fully supports, the following Equity Outreach Work Plan as a critical next step to specifically address and help implement the list of actions and outcomes outlined in their Equity Action Plan.

STEP ONE – COMMUNICATE + CONNECT . . .

. . . meet with individual community leaders

- + Create and confirm list of neighborhood contacts
- + Schedule informal meetings with identified community leaders
- + Prepare brief questionnaire to spark discussion

Deliverable: summary meeting notes + confirm specific actions/next steps

STEP TWO – UNDERSTAND PRIORITY ISSUES + IDEAS . . .

. . . convene small Focus Group discussion meetings

- + Convene ‘Community Leader’ Focus Group meeting(s) based on Step One contacts
- + Facilitate discussion toward a comprehensive list of their ‘priority issues and ideas’
- + Publish and submit Focus Group meeting results to participants for review/revision
- + Focus Group presentation of initial findings to City Leadership/City Staff

Deliverable: summary meeting notes + confirm specific actions/next steps

STEP THREE – BROADEN PARTICIPATION . . .

. . . meet with existing organizations and advocacy groups

- + Create and confirm list of neighborhood organizations and advocacy groups
- + Schedule and facilitate a series of meetings with identified organizations
- + Use questionnaire + Focus Group initial findings as the basis for discussion
- + Publish and submit meeting results to participants for review/revision
- + Facilitate ‘Equity Outreach Workshop’ meeting bringing together all participants
- + Publish and submit summary Workshop results to all participants

Deliverable: summary meeting notes + confirm specific actions/next steps

STEP FOUR – BUILD ONGOING ‘CARING + SHARING’ PLATFORM . . .

. . . help organize, support, participate in a variety of neighborhood-based events (music, food, art, performance, activities . . . Ideas sharing + input gathering)

- + Convene Equity Outreach Workshop participants to outline a series of public events
- + Support Community Leader efforts to schedule and coordinate public events
- [Identify specific City roles and responsibilities – resources, personnel, translator, etc.]
- + Participate/present information at scheduled public events

Deliverable: summary meeting notes + confirm specific actions/next steps

ADDITIONAL MEETINGS (beyond what has been included and described above)

As we’ve experienced over the past year, the overall Community Engagement Process can be very fluid and at times unpredictable. We expect there will be opportunities to meet with other yet to be identified groups or individuals who appear as the process unfolds.

The intent is to build trust, and encourage City/Community Leaders to take on a greater role to connect and communicate with a growing base of neighborhood participants who feel confident that their voices matter. Ideally, over time, this ‘Platform’ for sharing issues and ideas with city leadership will solidify their equitable place at the table – leading to specific actions and outcomes that deliver measurable benefits and improve day-to-day quality of life.

PROPOSED SCHEDULE

This Equity Outreach process has already begun and is expected to continue through the end of this year. Expected outcomes/deliverable listed under each Step will help define next steps and ongoing efforts into 2024.

NOTE: WHO IS THE INTENDED AUDIENCE FOR THIS OUTREACH EFFORT? WE KNOW WE’RE REACHING OUT TO THE LATINX COMMUNITY . . . ALSO YOUTH, SENIORS (although we’re getting a lot of youth and senior participation already in other forums): WHO ELSE DO WE WANT TO INCLUDE . . . BIPOC, NEW IMMIGRANT – WHAT OTHER GROUPS ARE GENERALLY NOT WELL REPRESENTED OR HEARD FROM ?



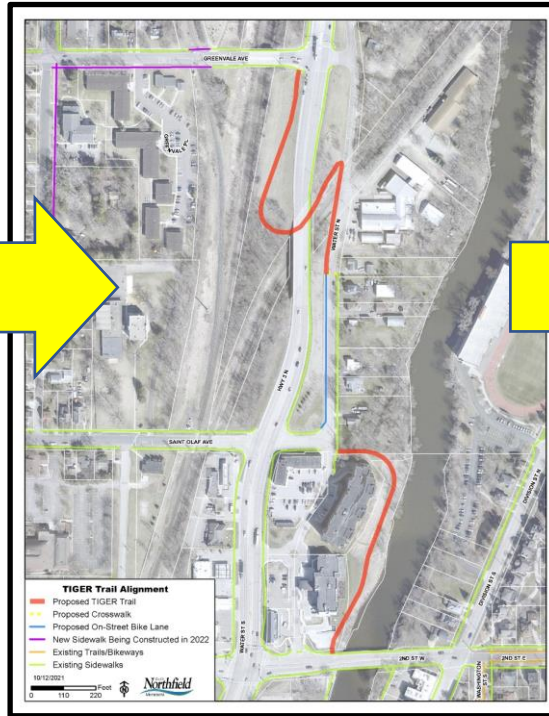
EXAMPLE 3 – IMPLEMENT THE NORTHFIELD EQUITY ACTION PLAN

Directive: answer the question – “WHO IS THIS FOR?” – it’s for everyone!!

WHICH LED TO . . .



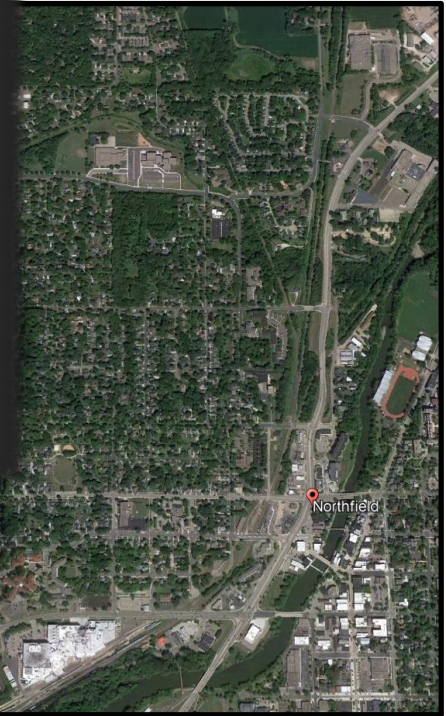
Initial discussion +
exploring options for
transportation
improvements



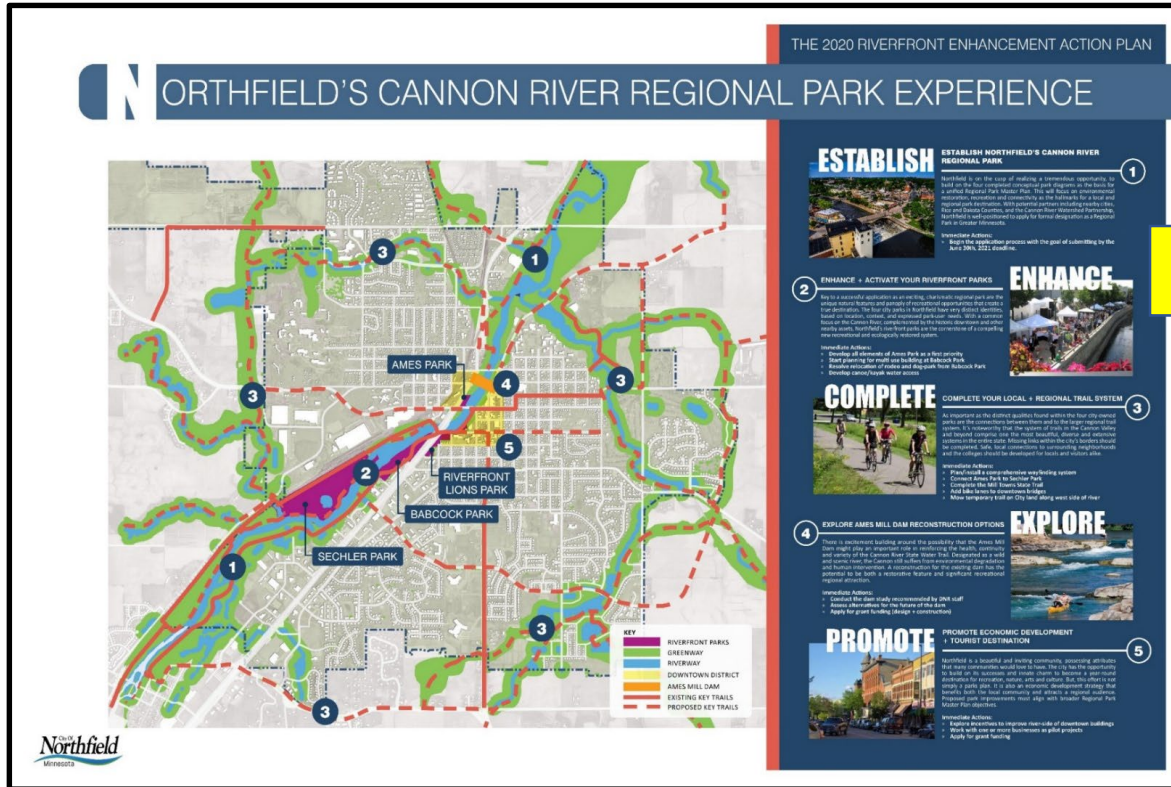
Initial discussion +
exploring options for
neighborhood trail
connections



Initial discussion + exploring options
for additional north side/west of
Highway 3 neighborhood amenities



DISCUSSION BEGAN WITH A GROWING EXCITEMENT ABOUT RE-IMAGINING YOUR CENTRAL RIVERFRONT ...



WHICH LED TO PUBLISHING THE CENTRAL RIVERFRONT DESIGN PRINCIPLES . . .

The riverfront is for everyone

Develop places and activities that create an inclusive, welcoming environment for all people, including ages, genders, physical abilities, ethnic and religious backgrounds.

The riverfront should be active

Focus on creating “people places” that activate the riverfront, including venues for music, festivals and casual conversation in addition to strolling and jogging along the Riverwalk.

The riverfront should be beautiful and memorable

New spaces should become iconic places, well-designed to respect and enhance their historic context while introducing new ideas about placemaking to the riverfront. Opportunities to integrate public art into all facets of the riverfront should be realized.

Rethink service and parking

A first step in transforming the riverfront is to “make the back door a front door.” Parking and service are extremely important, but the paradigm needs to shift to accommodate these needs using new ideas and technologies.

Promote health and wellness

The riverfront should be a place to relax and enjoy the day as well an active place to enjoy exercising. Design should reflect an awareness of human and environmental health (urban forest, etc.).

Integrate resilient design

Successful design will accommodate the increasing variations and intensity of natural events, including periodic flooding, extended dry periods, intense winter conditions, etc. Stormwater should be seamlessly and artfully treated before entering the Cannon River.

Enhance Connections

Complete a two-tiered, continuous Riverwalk in the downtown core to further enhance the riverfront experience year ‘round; provide multiple, safe connections into the neighborhoods to the east and west will attract people to the core and further activate the waterfront.

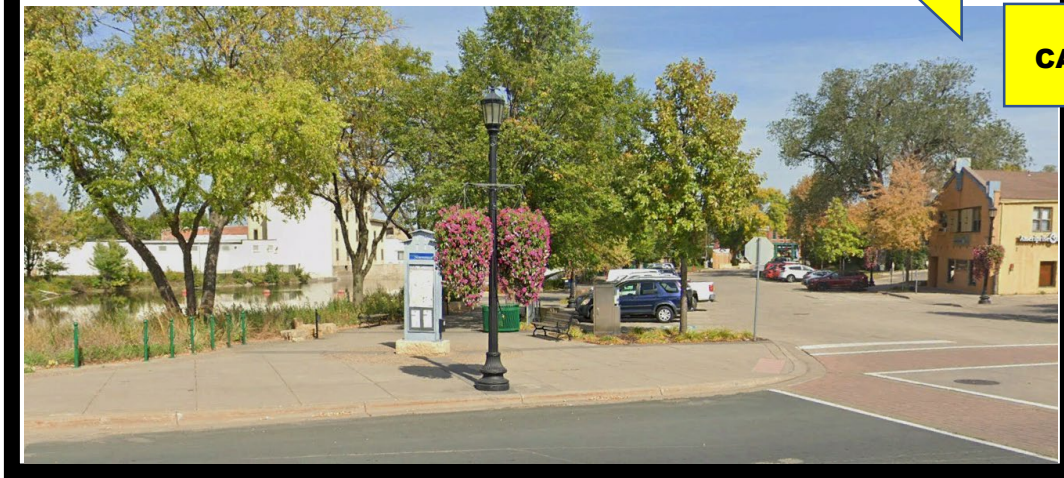
Focus on Northfield

The Northfield riverfront should be, first and foremost, a place for the local community to gather, celebrate, exercise, reflect, and simply enjoy the Cannon River. A successful local draw will always attract visitors.

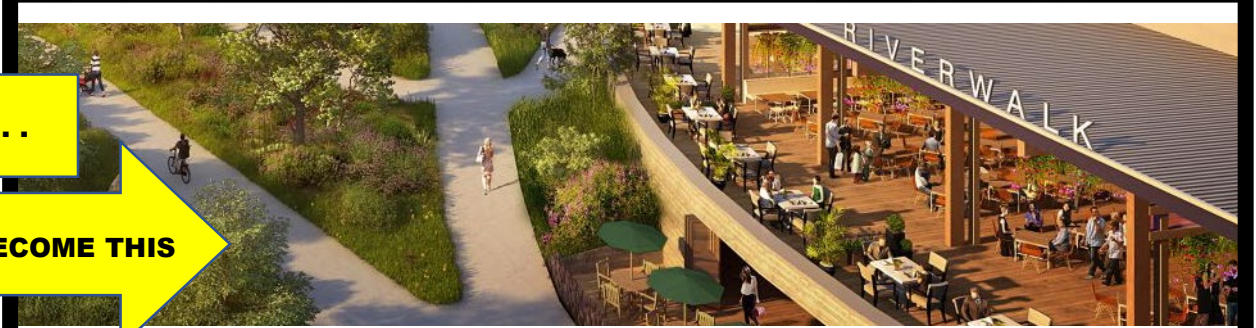
WHICH LED TO SHARED VISION TO 'TURN BACKS INTO FRONTS' . . .



HOW THIS . . .



CAN BECOME THIS



WHICH LED TO INITIAL DISCUSSIONS ABOUT HOW TO IMPROVE HIGHWAY 3 . . .



HOW THIS . . .



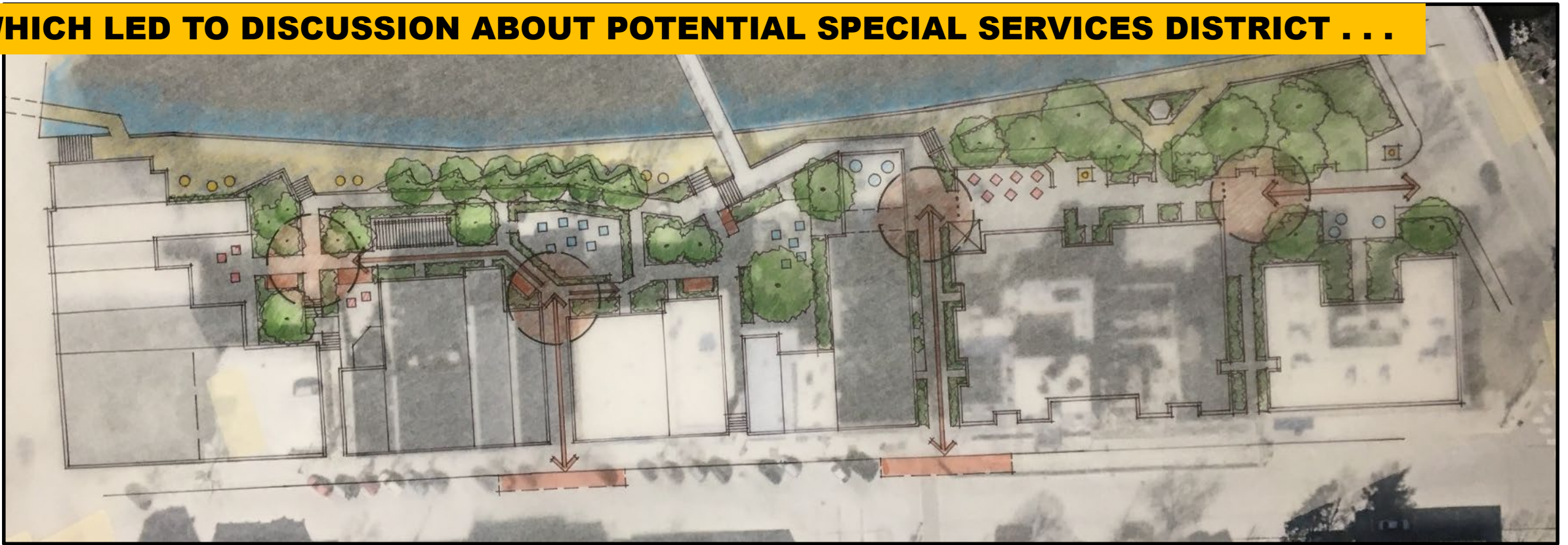
CAN BECOME THIS



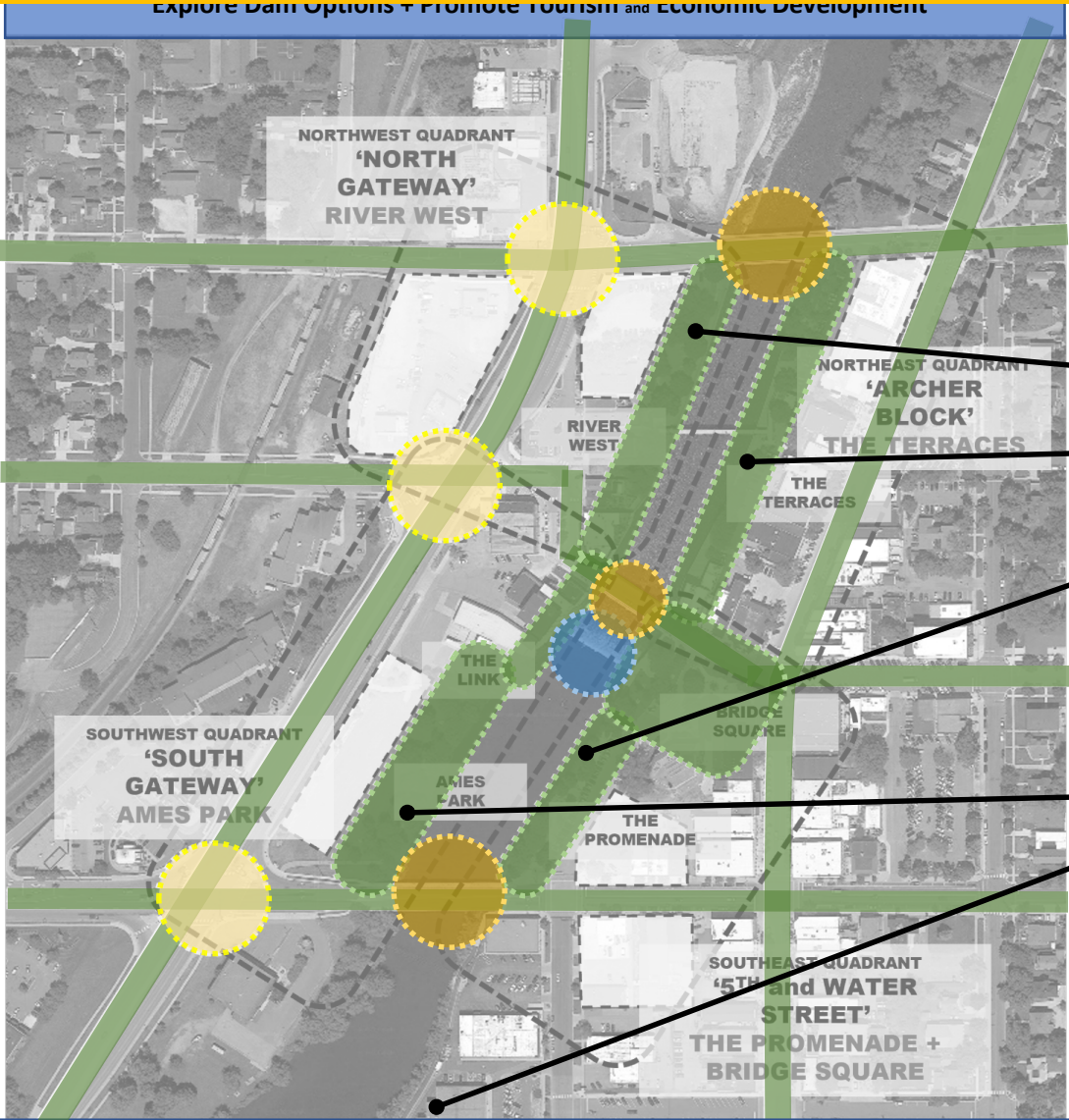
WHICH LED TO EXPLORING OPTIONS FOR AMES PARK + AMES MILL DAM . . .



WHICH LED TO DISCUSSION ABOUT POTENTIAL SPECIAL SERVICES DISTRICT . . .



WHICH LED TO MOVING FORWARD WITH CONCEPT DESIGN WORK . . .



CONCEPT DESIGN SCOPE OF SERVICES PROPOSALS PENDING CITY APPROVAL FOR THE FOLLOWING AREAS:

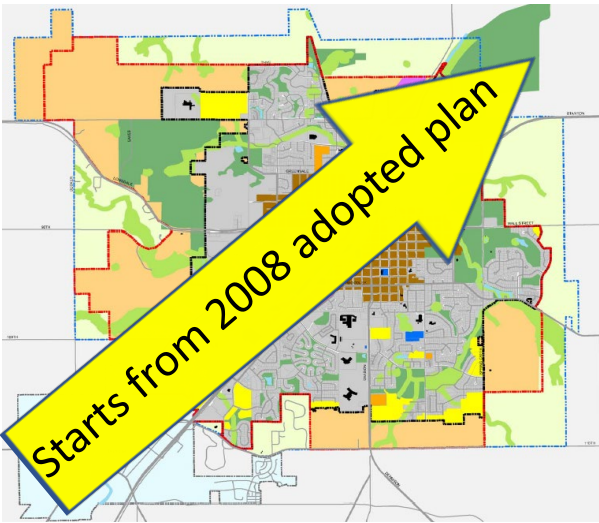
RIVER WEST PUBLIC REALM

THE TERRACES PUBLIC REALM

THE PROMENADE PUBLIC REALM

AMES PARK/RIVERSIDE LIONS PARK

CAPITALIZE ON PRECEDING WORK AND EXPAND APPROACH CITYWIDE . . .



SAFE ROUTES TO SCHOOL PLAN
CITY OF NORTHFIELD

THE AGING OF AMERICA
By the M...

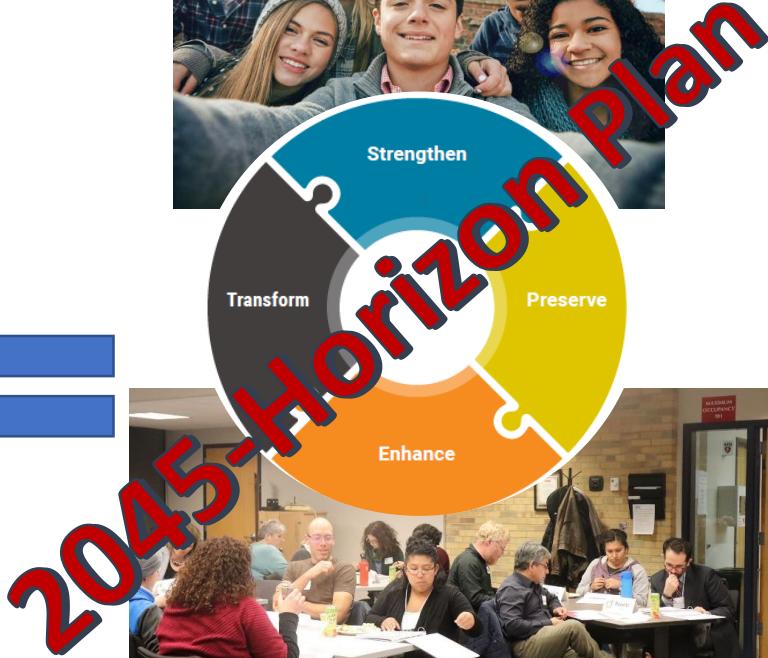
Northfield Climate Action Plan
Carbon Free | 2040

Creating an Age Friendly Northfield

City of Northfield
Gateway Corridor Improvement Plan May 2012
Prepared for the City of Northfield

COMPLETE STREETS POLICY

BIKEWAY DESIGN CONCEPTS AND REPORT



Source: Missing Middle Housing term created by Daniel Parolek/Image © Opticos Design, Inc./For more info visit www.middlehousing.com.



RELATIONSHIP TO THE NORTHFIELD COMPREHENSIVE PLAN
process update + next steps