

MINNESOTA HISTORY / ARCHITECTURE INVENTORY FORM
NORTHFIELD COMMERCIAL HISTORIC DISTRICT
 Rice County, Minnesota

PROPERTY LOCATION	
Property Name: McClaughry Tenement	Inventory No.: RC-NFC-311
Address: 105 E. 5th Street, Northfield, MN	PIN: 2206225039
QTR/QTR/T/R/S: NW NW Section 6 T111N R19W	
USGS Quad: Northfield, Minnesota	Plat Original Town Block: 33 Lot: 9
UTM Z 15 487310E, 4922458N NAD 83	

PROPERTY INFORMATION	
Construction Date: 1884	Style: Italianate/Eastlake
Historic Use: dwellings and offices	Current Use: commercial
Property Type: commercial	Historic Context: "Commerce, 1856-1945"
Architect/Builder	Survey Name: Northfield Historic District Survey Revision Project, 2016
Previous NRHP Status: Contributing to Northfield Commercial Historic District	NRHP Recommendation: Contributing to Northfield Commercial Historic District
Form Prepared by: Landscape Research LLC	Survey Date: 3/2016



2016, looking north



McClaughry Block with Tenement at rear, ca. 1900.

Description

The hip-roofed, two-story McClaughry Tenement faces south at the northwest corner of Grastvedt Lane and E. 5th Streets. It is situated west of the McClaughry Building. It rests on a high limestone foundation and the brick-clad façade is parged with stucco. A bracketed cornice with Eastlake detail edges the roofline. The segmental-arched windows contain modern sash. The red brick elevations have dogtooth brick stringcourses. A central entry portico has an upper-story balcony and enclosed entry porch separated by a flared roof. A low stuccoed wall rises from the sidewalk in front of the building. The north elevation is also stucco-clad and has modern windows.

History

This "double dwelling house" was erected by book and stationery dealer Oscar T. McClaughry as a companion to his three-story business block to the west. A view of the McClaughry Building, ca. 1900, shows the façade of the tenement with a full-length front porch, topped by a balustrade that might have had a second-level porch.

Significance and Evaluation

This building is associated with the second period of Northfield's commercial development, from ca. 1880 to 1900, when 29 of the 65 historic district buildings were constructed. It is associated with the Northfield historic context, "Commerce, 1856-1945" (Northfield Preservation Plan, 1992).

MINNESOTA HISTORY / ARCHITECTURE INVENTORY FORM
NORTHFIELD COMMERCIAL HISTORIC DISTRICT
Rice County, Minnesota

This property was listed on the NRHP in 1979 as contributing to the Northfield Commercial Historic District. Although it has had numerous alterations, many date from the district's period of significance (1856-1945) and the building exterior continues to retain enough historic significance and integrity to be contributing.

References

Edwins, Steve, ed. *Northfield Downtown Guidebook*. Northfield Heritage Preservation Commission, 1982, 21.

"Northfield Historic District," National Register of Historic Places Nomination, 1979.

Northfield News. *All About Northfield, Minn: Directory of Name and Business Firms, Information in Regard to the City*. Northfield: Northfield News, 1889.

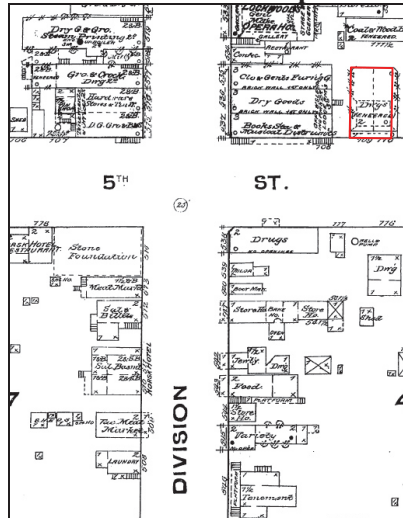
Neill, History of Rice County.

Northfield Historical Society. Photograph and research files. Northfield, Minnesota.

Sanborn Map & Publishing Company, New York. Northfield plates, 1886-1943.

Zellie, Carole. "Northfield Heritage Preservation Plan." Prepared for the Northfield Heritage Preservation Commission, Northfield, Minn. by Landscape Research, 1992.

Sanborn and USGS Maps



Sanborn Map and Publishing Co., 1884.



USGS: Northfield 1984.