

**MINNESOTA HISTORY / ARCHITECTURE INVENTORY FORM  
NORTHFIELD COMMERCIAL HISTORIC DISTRICT  
Rice County, Minnesota**

PROPERTY LOCATION	
<b>Property Name:</b> Fire Station and City Hall	<b>Inventory No.:</b> RC-NFC-266
<b>Address:</b> 302 Division Street, Northfield, MN	<b>PIN:</b> 2231350028
<b>QTR/QTR/T/R/S:</b> SW SW Section 31 T112N R19W	
<b>USGS Quad:</b> Northfield, Minnesota	<b>Plat Name:</b> Original Town <b>Block:</b> River Lots <b>Lot 7</b>
<b>UTM Z 15:</b> 487271E, 4922695N <b>NAD 83</b>	

PROPERTY INFORMATION	
<b>Construction Date:</b> 1876	<b>Style:</b> Italianate
<b>Historic Use:</b> Fire Station and City Hall	<b>Current Use:</b> commercial
<b>Property Type:</b> institutional	<b>Historic Context:</b> "Public Institutions and Improvements: 1857-1945"
<b>Architect/Builder</b>	<b>Survey Name:</b> Northfield Historic District Survey Revision Project, 2016
<b>Previous NRHP Status:</b> Contributing to Northfield Commercial Historic District	<b>NRHP Recommendation:</b> Contributing to Northfield Commercial Historic District
<b>Form Prepared by:</b> C. Zellie Landscape Research LLC	<b>Survey Date:</b> 3/2016



**City Hall and Fire Station (left), 2016, looking west      City Hall (center), ca. 1900**

**Description**

This two-story, flat-roofed cream-brick building faces east on Division Street. The rear fronts the Cannon River and Cannon River Commons. There is a narrow passageway between this building and 304 Division Street. This building shares a north party wall with the John Sitze Block (1886). There is a stamped metal cornice at roofline that surmounts a shallow corbel course. This cornice replaced a peaked roofline that continued the corbeling; it appears to have been anchored to a now-removed bell tower. Below the cornice, stone beltcourse edges the windows, and with a shallow dentil course frames four panels of patterned dogtooth brick. A pair of round-arched windows are centered on the façade and are flanked by segmental arched windows, all with raised brick voussoirs. The windows contain modern sash. The single entry at the ground floor level has a round arch, with raised brick voussoirs. The modern storefront contains multi-paned display windows. These windows replaced two arched wagon doors. The rear of the building retains a single entry and five window openings.

**MINNESOTA HISTORY / ARCHITECTURE INVENTORY FORM**  
**NORTHFIELD COMMERCIAL HISTORIC DISTRICT**  
**Rice County, Minnesota**

**History**

This building was designed to house a ground-level fire station and a second-floor City Hall. The fire department was organized in 1872. The original structure had a large, arched wagon entry and wood bell tower. A separate jail building was erected at the rear in 1909. City offices were in this building from 1880 until after World War I, when the YMCA next door at 304 Division Street was remodeled for office use.

**Significance and Historic Context(s)**

This building is associated with the first period of Northfield's development, from ca. 1880 to 1900, when 29 of the 65 historic district buildings were constructed. It is associated with the Northfield historic contexts, "Private Institutions," 1857-1945" and "Public Institutions and Improvements: 1857-1945" (Northfield Preservation Plan, 1992).

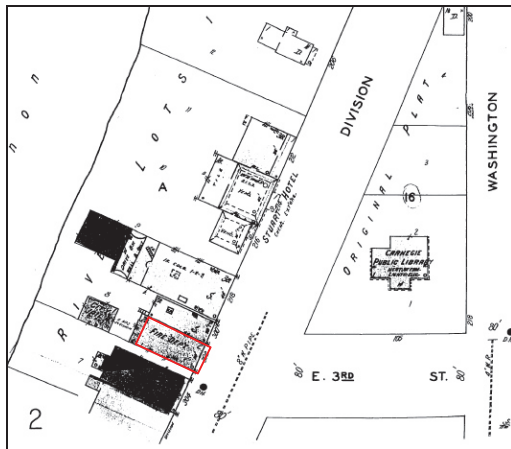
**Evaluation**

This property was listed on the NRHP in 1979 as contributing to the Northfield Commercial Historic District. It continues to retain historic significance and good integrity.

**References**

- "Northfield Historic District," National Register of Historic Places Nomination, 1979.
- Edwins, Steve, ed. *Northfield Downtown Guidebook*. Northfield Heritage Preservation Commission, 1982.
- Northfield News. *All About Northfield, Minn: Directory of Name and Business Firms, Information in Regard to the City*. Northfield: Northfield News, 1889.
- Northfield Historical Society. Photograph and research files. Northfield, Minnesota.
- Sanborn Map & Publishing Company, New York. Northfield plates, 1886-1943.
- Zellie, Carole. "Northfield Heritage Preservation Plan." Prepared for the Northfield Heritage Preservation Commission, Northfield, Minn. by Landscape Research, 1992.

**Sanborn and USGS Maps**



Sanborn Map and Publishing Co., 1930, updated to 1943. USGS: Northfield 1984.