

**MINNESOTA HISTORY / ARCHITECTURE INVENTORY FORM**  
**NORTHFIELD COMMERCIAL HISTORIC DISTRICT**  
Rice County, Minnesota

PROPERTY LOCATION	
<b>Property Name:</b> Hamre Building	<b>Inventory No.:</b> RC-NFC- 286
<b>Address:</b> 411-13 Division Street, Northfield, MN	<b>PIN:</b> 2206225035 and 2206225036
<b>QTR/QTR/T/R/S:</b> NW NW Section 6 T111N R19W	
<b>USGS Quad:</b> Northfield, Minnesota	<b>Plat:</b> Original Town <b>Block:</b> 33 <b>Lot:</b> 8
<b>UTM Z 15</b> 487294E, 4922511N NAD 83	

PROPERTY INFORMATION	
<b>Construction Date:</b> 1886	<b>Style:</b> Queen Anne/Eastlake
<b>Historic Use:</b> commercial	<b>Current Use:</b> commercial
<b>Property Type:</b> commercial	<b>Historic Context:</b> "Commerce, 1856-1945"
<b>Architect/Builder</b>	<b>Survey Name:</b> Northfield Historic District Survey Revision Project, 2016
<b>Previous NRHP Status:</b> Contributing to Northfield Commercial Historic District	<b>NRHP Recommendation:</b> Contributing to Northfield Commercial Historic District
<b>Form Prepared by:</b> Landscape Research LLC	<b>Survey Date:</b> 3/2016



2016, looking east



ca. 1965

### Description

The flat-roofed Hamre Building faces west on Division Street. It is comprised of two buildings joined by a party wall. It has a prominent nine-bay, red brick façade crowned with a tall parapet, deep corbel course, and stamped metal cornice. Each bay is framed by brick pilasters trimmed with rusticated, buff-colored limestone. A stone stringcourse unites the sills and lintels across the façade. The central bay is framed by a projecting pilaster surmounted by a finial-topped, crested date plaque at the cornice; the plaque is embellished with a stamped dog's tooth pattern and the date 1886. At the ground level, fluted cast-iron columns stamped with "St. Paul Foundry" frame a single stone step and paneled single-leaf door with a glazed transom. The flanking storefronts have a recessed entry and large, wood-framed display windows.

### History

This building was among the first large masonry blocks on the east side of Division between 4th and 5th Streets, predating the Central Block (1893) by nine years. It has housed a variety of retail tenants at the ground floor and offices at the second level. Montgomery Ward was a 1940s tenant.

**MINNESOTA HISTORY / ARCHITECTURE INVENTORY FORM**  
**NORTHFIELD COMMERCIAL HISTORIC DISTRICT**  
Rice County, Minnesota

**Significance and Historic Context(s)**

This building is associated with the second period of Northfield's commercial development, from ca. 1880 to 1900, when 29 of the 65 historic district buildings were constructed. It is associated with the Northfield historic context, "Commerce, 1856-1945" (Northfield Preservation Plan, 1992).

**Evaluation**

This property was listed on the NRHP in 1979 as contributing to the Northfield Commercial Historic District. The exterior continues to retain historic significance and integrity and the building continues to be contributing to the district.

**References**

Edwins, Steve, ed. *Northfield Downtown Guidebook*. Northfield Heritage Preservation Commission, 1982, 18.  
"Northfield Historic District," National Register of Historic Places Nomination, 1979.  
Northfield News. *All About Northfield, Minn: Directory of Name and Business Firms, Information in Regard to the City*. Northfield: Northfield News, 1889.  
Northfield Historical Society. Photograph and research files. Northfield, Minnesota.  
Sanborn Map & Publishing Company, New York. Northfield plates, 1886-1943.  
Zellie, Carole. "Northfield Heritage Preservation Plan." Prepared for the Northfield Heritage Preservation Commission, Northfield, Minn. by Landscape Research, 1992.

**Additional Photographs**

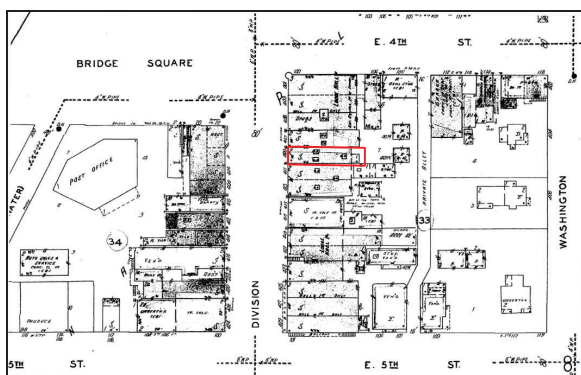


Hamre Building (1886) at left, ca. 1890; Skinner Block (1860s), at right.



Central entry with cast-iron columns, 2016.

**Sanborn and USGS Maps**



Sanborn Map and Publishing Co., 1930, updated 1943.



USGS: Northfield 1984.