

**MINNESOTA HISTORY / ARCHITECTURE INVENTORY FORM
NORTHFIELD COMMERCIAL HISTORIC DISTRICT**

PROPERTY LOCATION	
Property Name: Onstad Building (south) Onstad Building 2	Inventory No.: RC-NFC-281
Address: 508 Division Street	PIN: 2206225101
QTR/QTR/T/R/S: NW NW Section 6 T111N R19W	
USGS Quad: Northfield, Minnesota	Plat Name: Original Town Block: 47 Lot: 4
UTM Z 15 487219E, 4922393N NAD 83	

PROPERTY INFORMATION	
Construction Date: ca. 1900	Style: Queen Anne
Historic Use: commercial	Current Use: commercial
Property Type: commercial	Historic Context: "Commerce, 1856-1945"
Architect/Builder	Survey Name: Northfield Historic District Survey Revision Project, 2016
Previous NRHP Status: Contributing to Northfield Commercial Historic District	NRHP Recommendation: Contributing to Northfield Commercial Historic District
Form Prepared by: Landscape Research LLC	Survey Date: 3/2016



2016, looking west



1917

Description

The flat-roofed, two-story Onstad Building (south) is clad in red brick. The roofline is edged by a deep sheet metal cornice with pyramidal finials and a brick corbel course. The four upper-story windows are flanked by piers with smooth stone trim and each is surmounted by a blind arch. Each window has a prominent stone sill and lintel. The modern sash has one-over-one lights. The modernized storefront has stack-coursed brick and modern display windows.

History

In 1900 this building housed a saloon (Sanborn 1900). The Onstad Building (south) was part of three joined retail and hotel buildings that also included the Olson (1890, 504 Division) and Onstad north Buildings (ca. 1887, 506 Division). In 1945 it housed the Northfield Gospel Tabernacle.

MINNESOTA HISTORY / ARCHITECTURE INVENTORY FORM
NORTHFIELD COMMERCIAL HISTORIC DISTRICT

Significance and Historic Context(s)

This building is part of the second period of Northfield's commercial development, from ca. 1880 to 1900, when 29 of the 65 historic district buildings were constructed. It is associated with the Northfield historic context, "Commerce, 1856-1945" (Northfield Preservation Plan, 1992).

Evaluation

This property was listed on the NRHP in 1979 as contributing to the Northfield Commercial Historic District. The building exterior continues to retain enough historic significance and integrity to be contributing.

References

Edwins, Steve, ed. *Northfield Downtown Guidebook*. Northfield Heritage Preservation Commission, 1982, 21.

"Northfield Historic District," National Register of Historic Places Nomination, 1979.

Northfield Historical Society. Photograph and research files. Northfield, Minnesota.

Sanborn Map & Publishing Company, New York. Northfield plates, 1886-1943.

Zellie, Carole. "Northfield Heritage Preservation Plan." Prepared for the Northfield Heritage Preservation Commission, Northfield, Minn. by Landscape Research, 1992.

Photographs (Northfield Historical Society Collections)

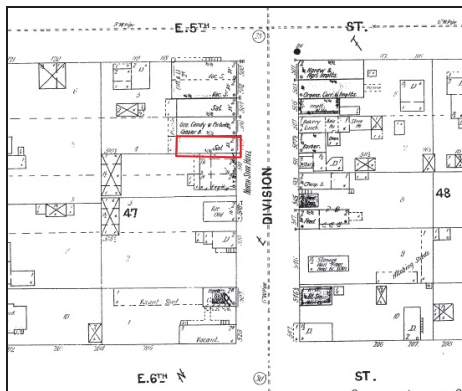


500 Block of Division Street, west side, looking north, 1948.



500 Block of Division Street, west side, looking north, 1977.

Sanborn and USGS Maps



Sanborn Map and Publishing Co., 1910.



USGS: Northfield 1984.