

**MINNESOTA HISTORY / ARCHITECTURE INVENTORY FORM
NORTHFIELD COMMERCIAL HISTORIC DISTRICT**

PROPERTY LOCATION	
Property Name: Holland Block	Inventory No.: RC-NFC- 278
Address: 500 Division Street (500-502)	PIN: 2206228001
QTR/QTR/T/R/S: NW NW Section 6 T111N R19W	
USGS Quad: Northfield, Minnesota	Plat Name: Original Town
UTM Z 15 487231E, 4922416N, NAD 83	

PROPERTY INFORMATION	
Construction Date: 1883	Style: Queen Anne
Historic Use: commercial	Current Use: commercial
Property Type: commercial	Historic Context: "Commerce, 1856-1945"
Architect/Builder	Survey Name: Northfield Historic District Survey Revision Project, 2016
Previous NRHP Status: Contributing to Northfield Commercial Historic District	NRHP Recommendation: Contributing to Northfield Commercial Historic District
Form Prepared by: Landscape Research LLC	Survey Date: 3/2016



2016, looking southwest



1976

Description

The Holland Block occupies the southwest corner of Division and E. 5th Streets. The flat-roofed building is clad in brown brick. The corbeled brick cornice wraps the east and north elevations and is accented by bands of dogtooth brick. Above the ground-level storefronts, a deep wood cornice wraps the façade around the E. 5th Street corner. It has incised brackets and acanthus trim. The four-bay east façade facing Division Street has paired windows, each united under a segmental brick arch filled with incised detail. Each window has a stone sill and the sash has one-over-one lights. The two ground-level storefronts have recessed entries and large display windows. The cornice and storefronts are recent interpretations of the features that were removed in 1999 by Mainstreet Properties. The north-facing, E. 5th Street elevation has eight upper-story windows including three pairs of windows joined under segmental-arched openings. All windows have stone sills and contain sash with one-over-one lights. A storefront facing E. 5th Street (103 E. 5th) is accessed by metal steps and has a recessed central entry and glazed transoms over display windows. A metal stair leads to the single second-floor entry. The west elevation is coursed limestone rubble, with four historic window openings and an entry. The openings have brick voussoirs and stone sills. There are also two modern windows.

History

500-502 Division Street was built by Edward Holland (1841-?), a cattle dealer, and was originally used as a furniture store. The ground level space was apparently divided for several businesses. In 1889, J. R. Sumner & Co. furniture store was the occupant. Beginning in 1899, the Minneapolis Brewing Company

**MINNESOTA HISTORY / ARCHITECTURE INVENTORY FORM
NORTHFIELD COMMERCIAL HISTORIC DISTRICT**

was also the occupant. Holland started a wholesale meat market in the building. Various organizations were on the second floor, including the “Viking Literary Society” 1900. The IOOF was also an upstairs tenant. The W. H. King Feed store was in the south half in 1907. King moved to the Silk Building (514 Division Street) in 1908. In 1909 Lee Furniture had the entire first floor. The J. L. Crandall Store opened in 1915 and Mohn Packaging 1918. “Extensive alterations” were made in 1916. The IOOF purchased the Holland Block in 1922 and divided the first floor into two stores, and also renovated the second floor. First-floor tenants were Jesse Revier’s meat market and the Johnson and Gilligan Bowling Alley. Grocery stores were tenants in the 1920s, including the Consumer’s Wholesale Supply in 1925. This use continued through the 1960s. In 1945 the Western Auto Association Store was a tenant, along with Joyce Christopherson’s grocery. The Big Wheel Auto Supply was the occupant in the 1970s.

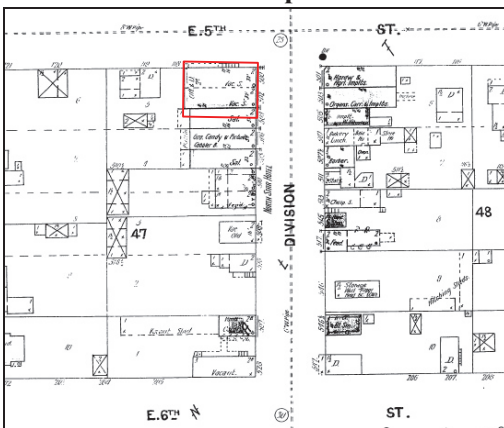
Significance and Historic Context(s)

This building is part of the second period of Northfield’s commercial development, from ca. 1880 to 1900, when 29 of the 65 historic district buildings were constructed. It is associated with the Northfield historic context, “Commerce, 1856-1945” (Northfield Preservation Plan, 1992). It remains an important example of a multi-story retail and business block.

Evaluation

This property was listed on the NRHP in 1979 as contributing to the Northfield Commercial Historic District. Although it has lost historic features due to storefront remodelings, the building exterior continues to retain enough historic significance and integrity to be contributing.

Sanborn and USGS Maps



Sanborn Map and Publishing Co., 1900.



USGS: Northfield 1984.

Additional Photographs



500 Block of Division Street, west side, looking north, 1948.



500 Block of Division Street, west side, looking north, 1977.