

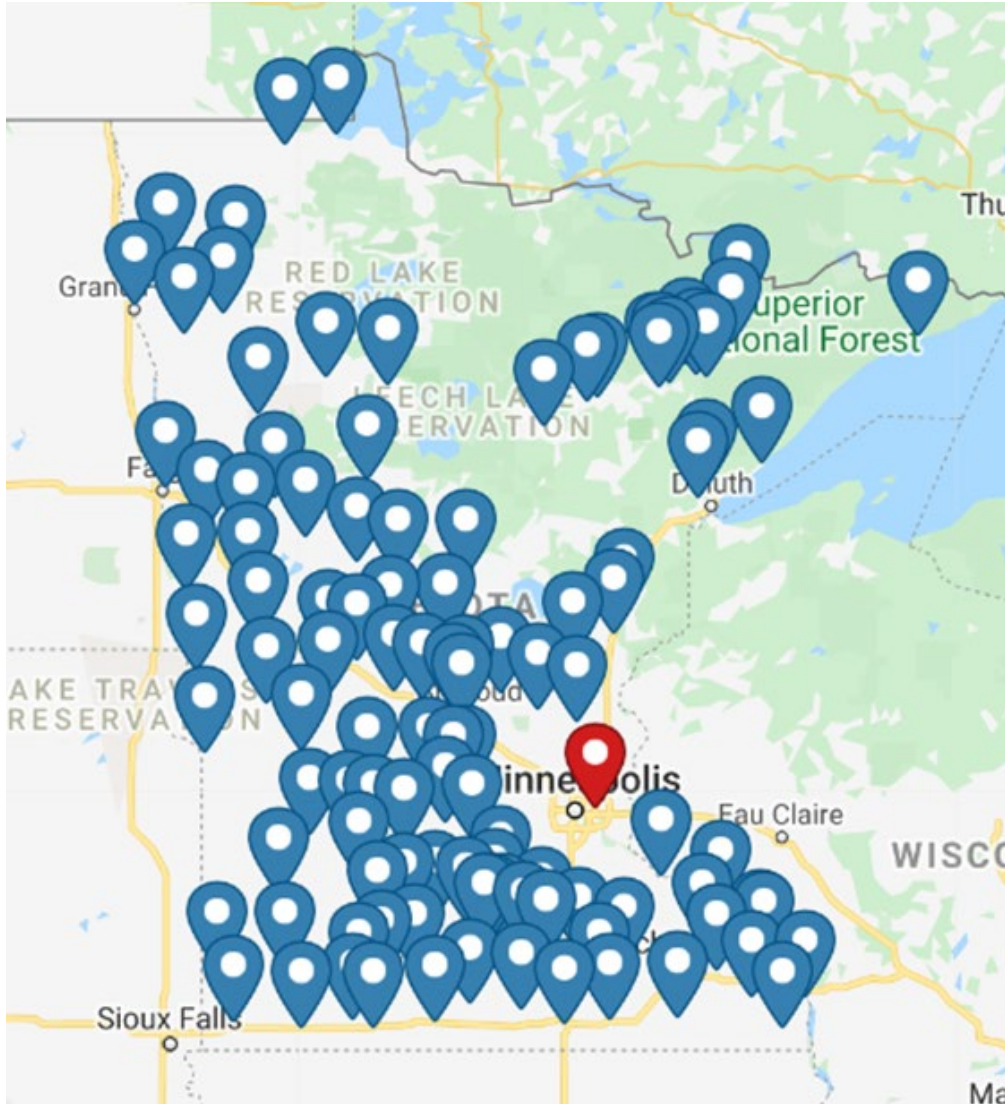


City of Northfield

JANUARY 11, 2022

SHANE ZAHRT, FLAHERTY & HOOD, P.A.

MAYOR PAT BAUSTIAN, CITY OF LUVERNE



CGMC – More than 100 cities across the state working together

- LGA/Property Taxes
- Economic Development
- Annexation and Land Use
- Transportation
- Environment and Energy
- Labor and Employment

CGMC Is Greater Minnesota's Voice

- Policy discussions need all voices at the table. CGMC is that collective voice for Greater Minnesota cities.
- The Twin Cities metro area spares no expense in bringing their voice to the Capitol through MetroCities, Met Council, individual city lobbyists, and other organizations that represent metro or suburban interests. CGMC works tirelessly to bring balance to the scale.

Your Team at the Capitol

CGMC is a constant presence at the Capitol because it's not possible for our members to be.

Top-Notch Policy Analysis

CGMC prides itself on fact-based lobbying and invests in our ability to produce high-quality, accurate research that helps identify problems and solutions that we can bring to policymakers.

Member-Driven Advocacy

CGMC selects the issues it works on through member engagement

- Policy development process takes place in October and November
- Ongoing member contact
- City visits

Examples:

- Child care and Housing

Greater MN's Voice in St. Paul

Protect and
Strengthen
LGA

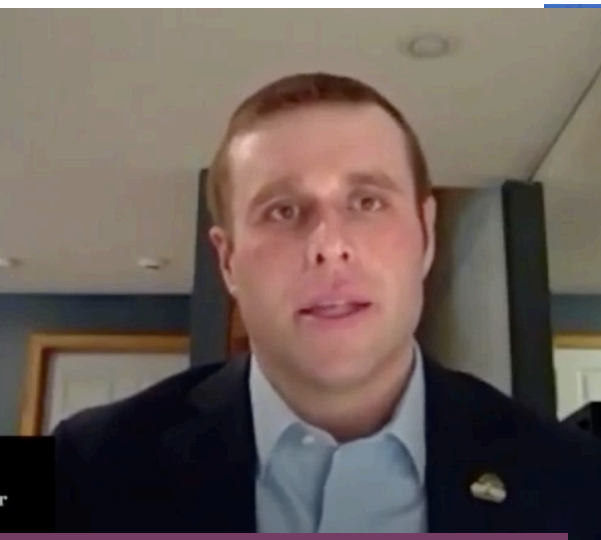
Child Care

PFAS

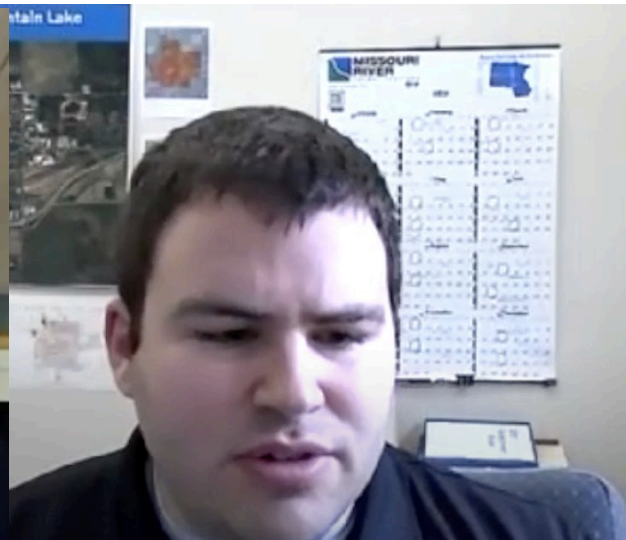
Housing

Infrastructure
Funding

Use of Federal
COVID-19
Relief Dollars



Council Member Jason Baskin, Austin



City Admin Michael Schulte, Mountain Lake



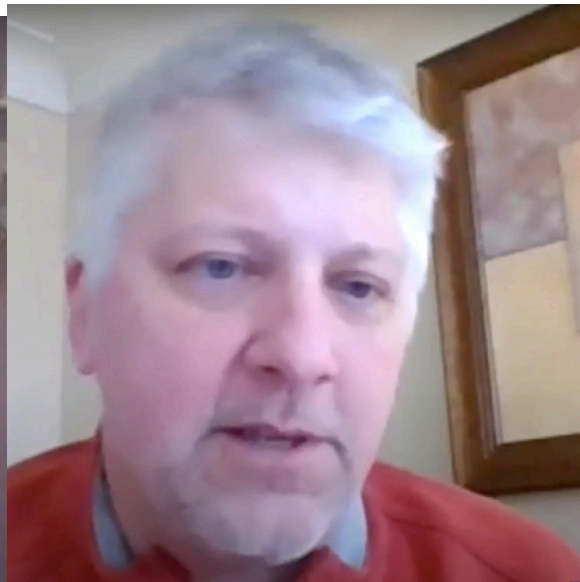
City Manager Steve Robinson, Worthington



Mayor Larry Cuffe Jr., Virginia



Mayor Emily Durand, Wabasha



Mayor Chris Etzler, Staples



Govt Affairs Director Lisa Bode, Moorhead

Looking out for Local Government Aid

You can view the full video at bit.ly/LGAvideo

LGA formula revisions on the horizon?

Legislators have expressed interest in reviewing and potentially revising the LGA formula.

CGMC's role:

- Surveyed our member cities on the current formula, city budget pressures, and how they might improve the formula
- Actively engaged in discussions with tax chairs and other city organizations
- Look at all discussions through the perspective of our members first

CGMC will remain at the center of these discussions with legislators to ensure it remains a city-driven process.

Key Priorities and Messages for 2022



- LGA needs to be increased for 2023 to keep up with service needs, inflation and restraint of property taxes, especially as local economies recover from COVID-19
- The LGA appropriation should be increased by inflation and population growth automatically on a yearly basis to add more predictability to the LGA program and to more effectively restrain property taxes

Key Priorities and Messages for 2022



- The state should take advantage of the current amount of available resource to make significant investments water and wastewater infrastructure
- With the current surplus and available federal funding from the ARP the state should continue to tackle childcare, housing, and workforce challenges in Greater Minnesota

Upcoming CGMC events

Legislative Action
Day, St. Paul

- March 2, 2022

Summer Conference,
Red Wing

- July 27-29, 2022

Fall Conference,
Alexandria

- Nov. 17-18, 2022



Thank you!

Website

Greatermncities.org

Facebook

Facebook.com/greatermncities

Twitter

[@greatermncities](https://twitter.com/greatermncities)

Youtube

Youtube.com/GreaterMNCities

