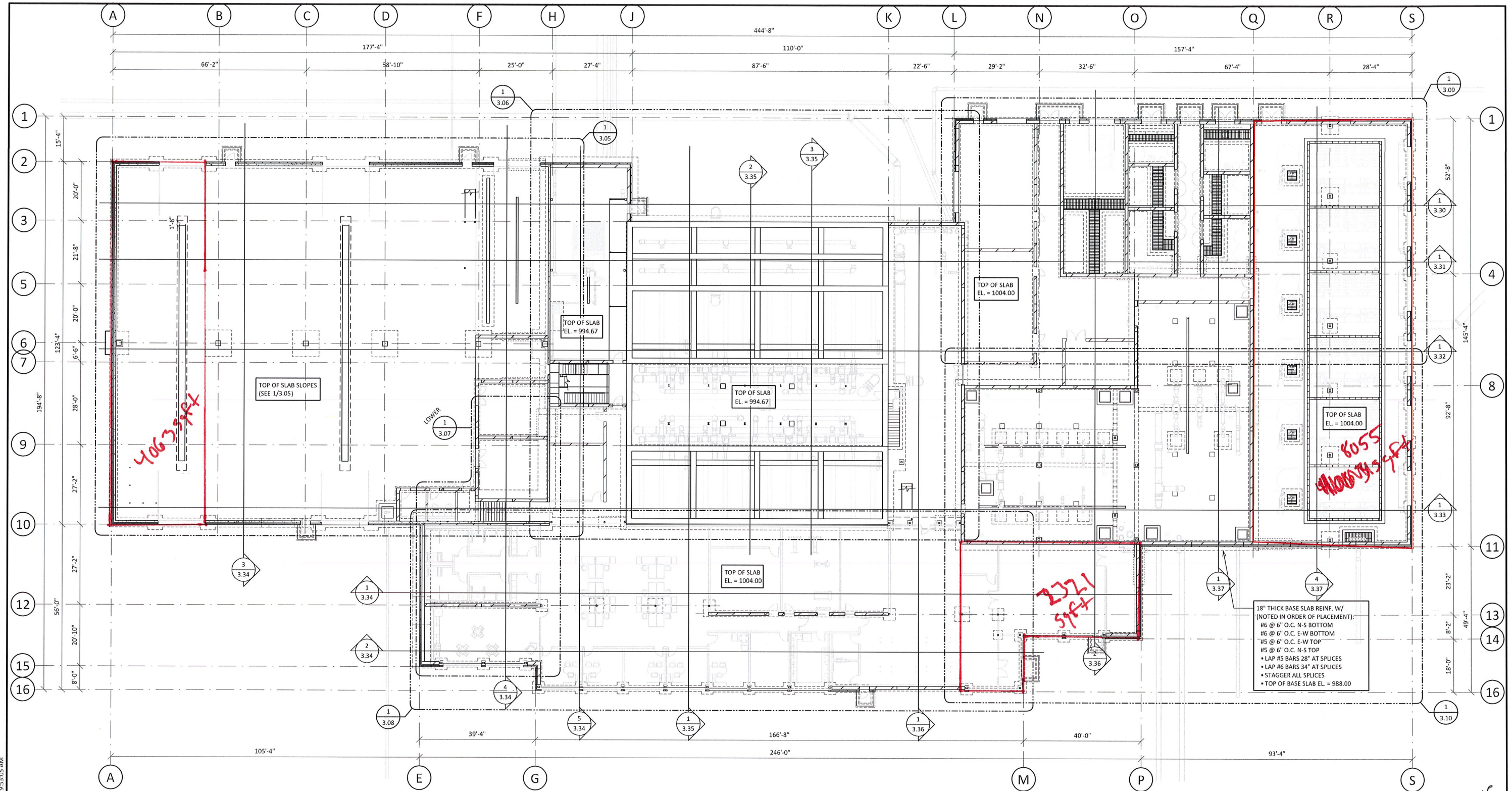
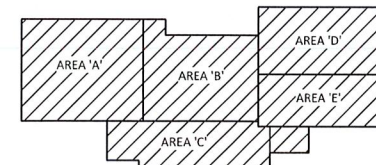


© Bolton & Menk, Inc. 2023. All Rights Reserved. 11/18/2024 9:53:05 AM



Option 1 Removals



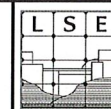
KEY PLAN

1 OVERALL FOUNDATION PLAN
1/16" = 1'-0"



TYPICAL UNLESS NOTED OTHERWISE:

- 6" CONCRETE SLAB ON GRADE W/ #4 @ 12" O.C. EA. WAY CENTERED (SEE PLAN FOR TOP OF SLAB EL.)
- CONTRACTOR LAYOUT SLAB CONTRACTION JOINTS FOR 6" CONCRETE SLAB ON GRADE AS PER 5/3.27 & 6/3.27 AND SUBMIT FOR APPROVAL.
- SEE 1/3.27 FOR STEPPED FOOTING DETAIL
- SEE 2/3.27 FOR CONTRACTOR'S OPTIONS AT MECH LINES BENEATH FOOTINGS.
- SEE 6/3.27 FOR ISOLATION JOINT AT COLUMN DETAIL



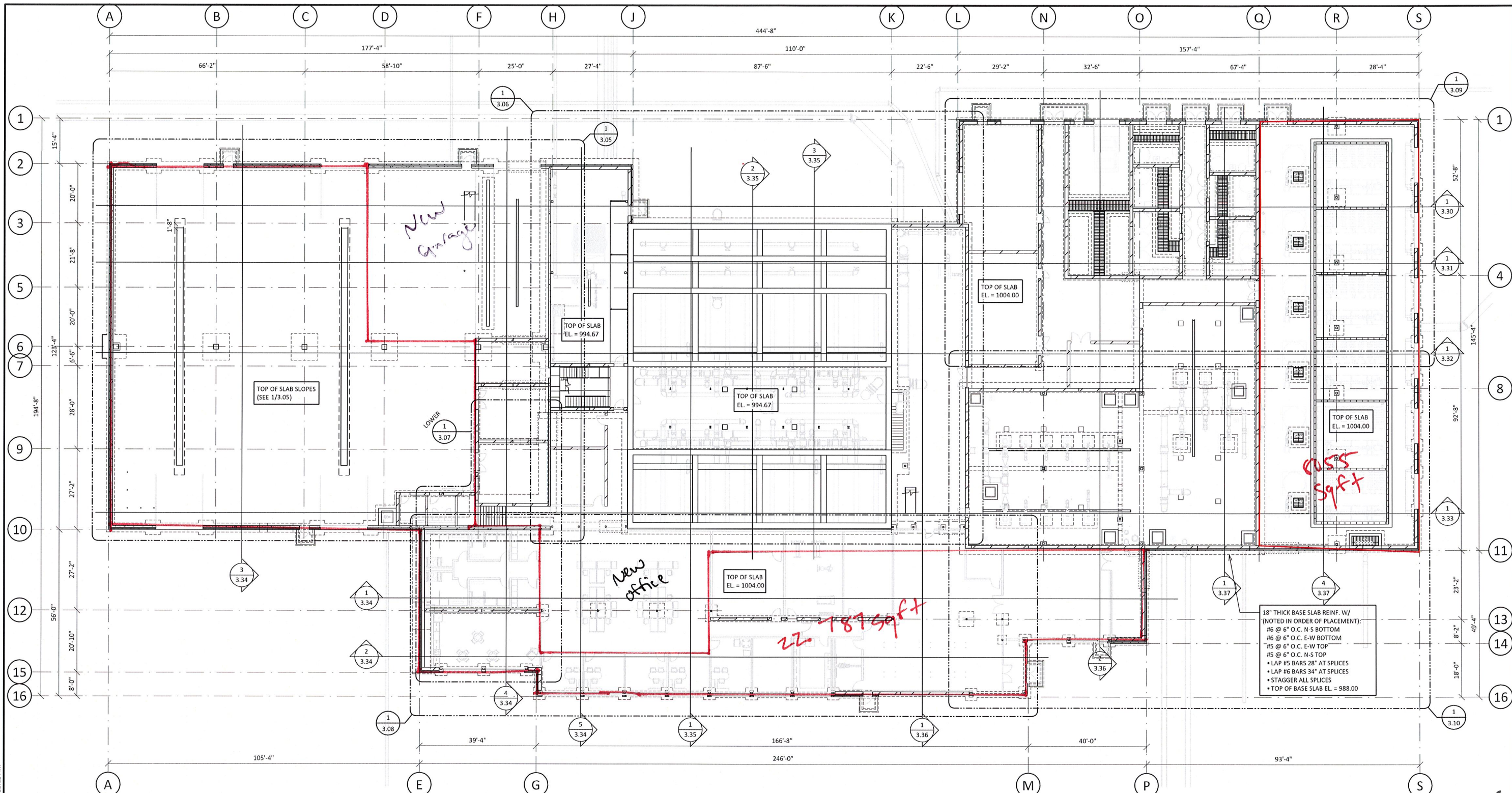
LSE
LSEngineers
234 N. Main St.
LeSueur, MN 56058

I HEREBY CERTIFY THAT THIS PLAN, SPECIFICATION OR REPORT WAS PREPARED BY ME OR UNDER MY DIRECT SUPERVISION, AND THAT I AM A DULY LICENSED PROFESSIONAL ENGINEER UNDER THE LAWS OF THE STATE OF MINNESOTA.
SIGNATURE: *Matthew A. Duff*
DATE: 11/14/24
TYPE OR PRINTED NAME: Matthew A Duff
LIC. NO.: 58678

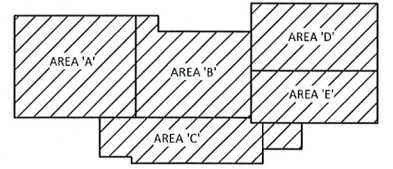


DESIGNED	MAD	NO.	ISSUED FOR	DATE
DRAWN	DWR	A		3-15-24
CHECKED	BIS	B		7-26-24
CLIENT PROJ. NO.	0M2.123279	D	BID	11-14-24

NORTHFIELD, MINNESOTA
WATER TREATMENT FACILITY
OVERALL FOUNDATION PLAN



Option 2 Removals

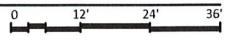


KEY PLAN

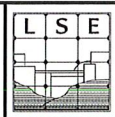
1 OVERALL FOUNDATION PLAN
1/16" = 1'-0"

TYPICAL UNLESS NOTED OTHERWISE:

- 6" CONCRETE SLAB ON GRADE W/ #4 @ 12" O.C. EA. WAY CENTERED (SEE PLAN FOR TOP OF SLAB EL.)
- CONTRACTOR LAYOUT SLAB CONTRACTION JOINTS FOR 6" CONCRETE SLAB ON GRADE AS PER 5/3.27 & 6/3.27 AND SUBMIT FOR APPROVAL.
- SEE 1/3.27 FOR STEPPED FOOTING DETAIL
- SEE 2/3.27 FOR CONTRACTOR'S OPTIONS AT MECH LINES BENEATH FOOTINGS.
- SEE 6/3.27 FOR ISOLATION JOINT AT COLUMN DETAIL



© Bolton & Menk, Inc. 2023, All Rights Reserved 11/18/2024 9:53:05 AM



LSE Engineers
234 N. Main St.
Le Sueur, MN 56058

I HEREBY CERTIFY THAT THIS PLAN, SPECIFICATION OR REPORT WAS PREPARED BY ME OR UNDER MY DIRECT SUPERVISION, AND THAT I AM A DULY LICENSED PROFESSIONAL ENGINEER UNDER THE LAWS OF THE STATE OF MINNESOTA
SIGNATURE: *Matthew A Duff* TYPED OR PRINTED NAME: Matthew A Duff
DATE: 11/14/24 LIC. NO.: 58678



DESIGNED	MAD	NO.	ISSUED FOR	DATE
DRAWN	DWR	B		3-15-24
CHECKED	BJS	0	BID	7-26-24
CLIENT PROJ. NO.	OM2.123279			

NORTHFIELD, MINNESOTA
WATER TREATMENT FACILITY
OVERALL FOUNDATION PLAN

SHEET
3.02