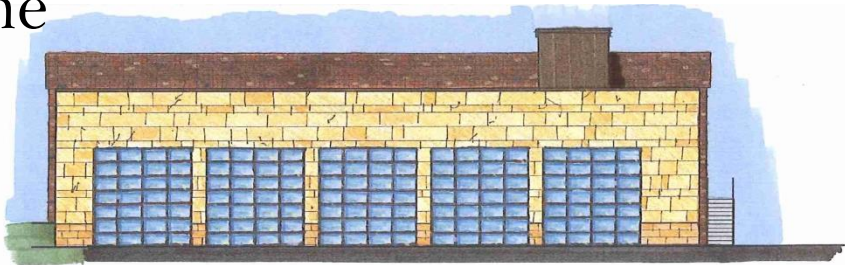
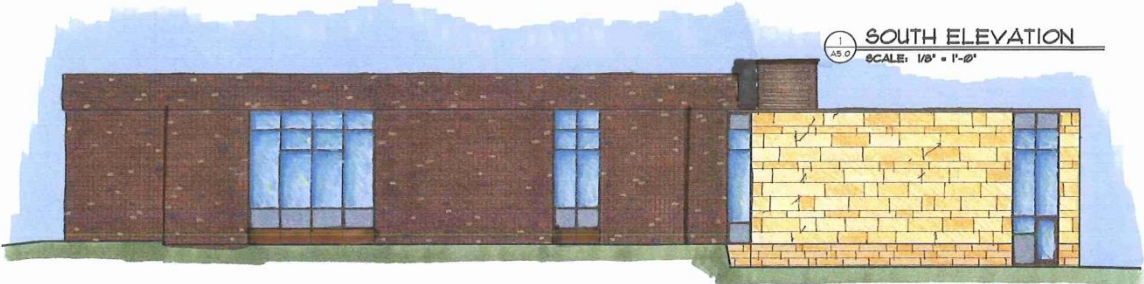




Exterior Elevations – Stone



1 SOUTH ELEVATION
SCALE: 1/8" = 1'-0"



2 WEST ELEVATION
SCALE: 1/8" = 1'-0"



3 EAST ELEVATION
SCALE: 1/8" = 1'-0"



4 NORTH ELEVATION
SCALE: 1/8" = 1'-0"

OPEN TO ALL
NOT FOR
CONSTRUCTION

NOTE:
 100'-0" = 917.17 CONTOUR
 100 YEAR FLOOD PLAIN @ 908.0
 500 YEAR FLOOD PLAIN @ 909.25

EXHIBIT B1 - Landscape Plan Overview

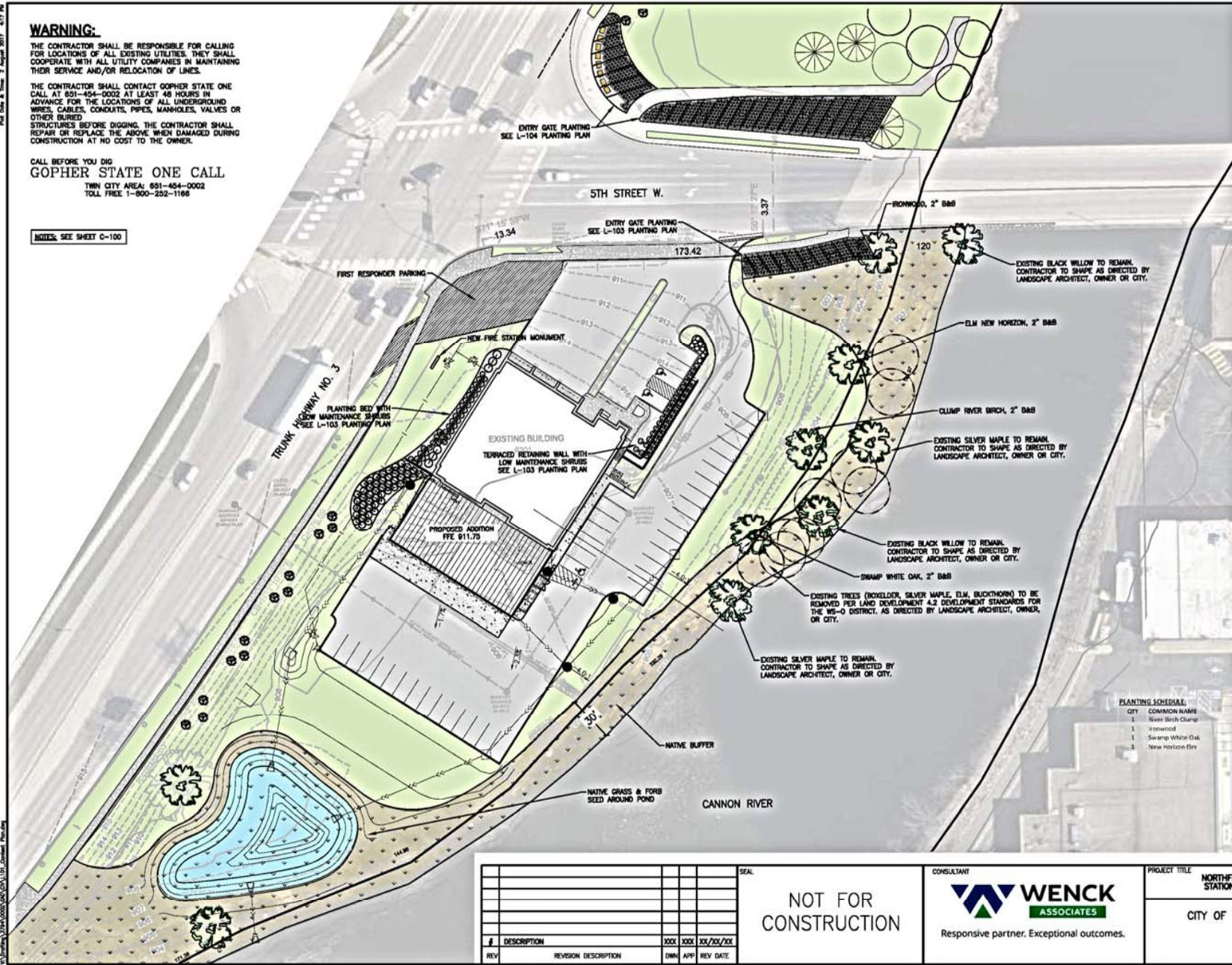
WARNING:

THE CONTRACTOR SHALL BE RESPONSIBLE FOR CALLING FOR LOCATIONS OF ALL EXISTING UTILITIES. THEY SHALL COOPERATE WITH ALL UTILITY COMPANIES IN MAINTAINING THEIR SERVICE AND/OR RELOCATION OF LINES.

THE CONTRACTOR SHALL CONTACT GOPHER STATE ONE CALL AT 601-454-0002 AT LEAST 48 HOURS IN ADVANCE FOR THE LOCATIONS OF ALL UNDERGROUND WIRES, CABLES, CONDUITS, PIPES, MANHOLES, VALVES OR OTHER BURIED STRUCTURES BEFORE DIGGING. THE CONTRACTOR SHALL REPAIR OR REPLACE THE ABOVE WHEN DAMAGED DURING CONSTRUCTION AT NO COST TO THE OWNER.

CALL BEFORE YOU DIG
GOPHER STATE ONE CALL
 TWIN CITY AREA: 651-454-0002
 TOLL FREE: 1-800-252-1168

NOTES: SEE SHEET C-100



Native planting next to sidewalk in Water Streets Park. Planting Palette for Entry Gate taken from plantings in Water Street Park.



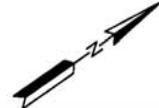
Native planting with native seeding behind for River Buffer at Water Street Park.



Tree spacing at Ames Park just north of the project site.

PLANTING SCHEDULE:

| QTY | COMMON NAME | HEIGHT | WIDTH | SPACING | SIZE |
|-----|-------------------|--------|-------|----------|--------|
| 1 | River Birch Clump | 30' | 40' | PER PLAN | 2" B&B |
| 1 | Ironwood | 40' | 25' | PER PLAN | 2" B&B |
| 1 | Swamp White Oak | 30' | 40' | PER PLAN | 2" B&B |
| 1 | New Horizon Elm | 30' | 30' | PER PLAN | 2" B&B |



| # | DESCRIPTION | DATE | BY | APP'D | REV DATE |
|---|-------------|------|----|-------|----------|
| | | | | | |
| | | | | | |

NOT FOR CONSTRUCTION

CONSULTANT

 Responsive partner. Exceptional outcomes.

| | |
|--------------------|----------------------------------|
| PROJECT TITLE | NORTHFIELD FIRE STATION ADDITION |
| CITY OF NORTHFIELD | |

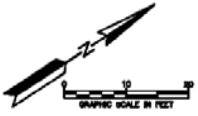
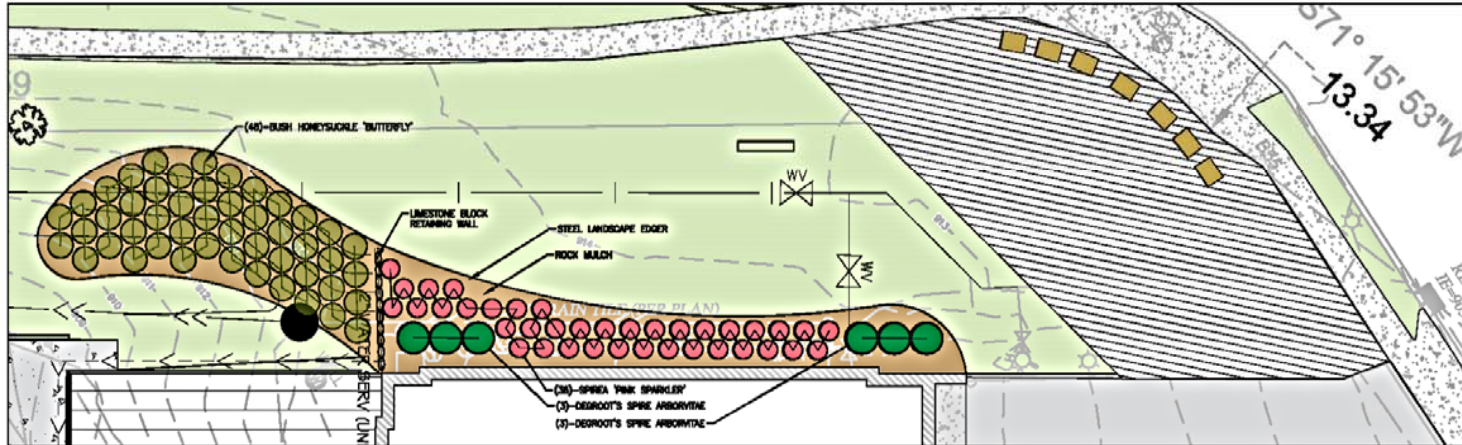
| | | | | |
|-------------|-------------------------|---------|----------|------------|
| SHEET TITLE | LANDSCAPE PLAN OVERVIEW | | | |
| DWN BY | CHK'D | APP'D | DWG DATE | APRIL 2017 |
| MJS | | | SCALE | AS SHOWN |
| PROJECT NO. | SHEET NO. | REV NO. | L-102 | |

EXHIBIT B2 - Landscape Planting Plan

WARNING:
 THE CONTRACTOR SHALL BE RESPONSIBLE FOR CALLING FOR LOCATIONS OF ALL EXISTING UTILITIES. THEY SHALL COOPERATE WITH ALL UTILITY COMPANIES IN MAINTAINING THEIR SERVICE AND/OR RELOCATION OF LINES.
 THE CONTRACTOR SHALL CONTACT GOPHER STATE ONE CALL AT 801-454-0002 AT LEAST 48 HOURS IN ADVANCE FOR THE LOCATIONS OF ALL UNDERGROUND WIRES, CABLES, CONDUITS, PIPES, MANHOLES, VALVES OR OTHER BURIED STRUCTURES BEFORE DIGGING. THE CONTRACTOR SHALL REPAIR OR REPLACE THE ABOVE WHEN DAMAGED DURING CONSTRUCTION AT NO COST TO THE OWNER.

CALL BEFORE YOU DIG
GOPHER STATE ONE CALL
 TWIN CITY AREA: 801-454-0002
 TOLL FREE 1-800-252-1100

SEE SHEET C-100



PLANTING SCHEDULE:

| QTY | COMMON NAME | LATIN NAME | HEIGHT | WIDTH | SPACING | SIZE |
|-----|---------------------------|--------------------------------------|---------|-------|----------|---------|
| 48 | Dwarf Bush Honeysuckle | Dianella leucosticta | 3'-4' | 3' | PER PLAN | 40 POT |
| 27 | Juniper Lime Glow | Juniperus horizontalis 'Lime Glow' | 18" | 3'-5' | PER PLAN | 45 POT |
| 63 | Spirea Pink Sparkler | Spirea Pink Sparkler | 3'-4' | 3'-4' | PER PLAN | 40 POT |
| 5 | Juniper 'Degroot's Spire' | Thuja occidentalis 'Degroot's Spire' | 30'-32' | 3'-4' | PER PLAN | 400 POT |
| 42 | Big Bluestem | Andropogon gerardii | 4'-6' | 3'-5' | PER PLAN | 45 POT |
| 48 | Little Bluestem | Schizachyrium scoparium | 3'-4' | 3' | PER PLAN | 40 POT |
| 84 | Prairie Dropseed | Sporobolus heterolepis | 2' | 2' | PER PLAN | 40 POT |
| 67 | Purple Coneflower | Echinacea purpurea | 2'-3' | 1.5' | PER PLAN | 40 POT |
| 32 | Orange Coneflower | Rudbeckia 'Goldstrum' | 2.5' | 1.5' | PER PLAN | 40 POT |
| 32 | Sedium Autumn Fire | Sedium 'Autumn Fire' | 1.5' | 2' | PER PLAN | 40 POT |

| # | DESCRIPTION | XXX | XXX | XX/XX/XX |
|-----|----------------------|-----|-----|----------|
| REV | REVISION DESCRIPTION | DWN | APP | REV DATE |

NOT FOR CONSTRUCTION

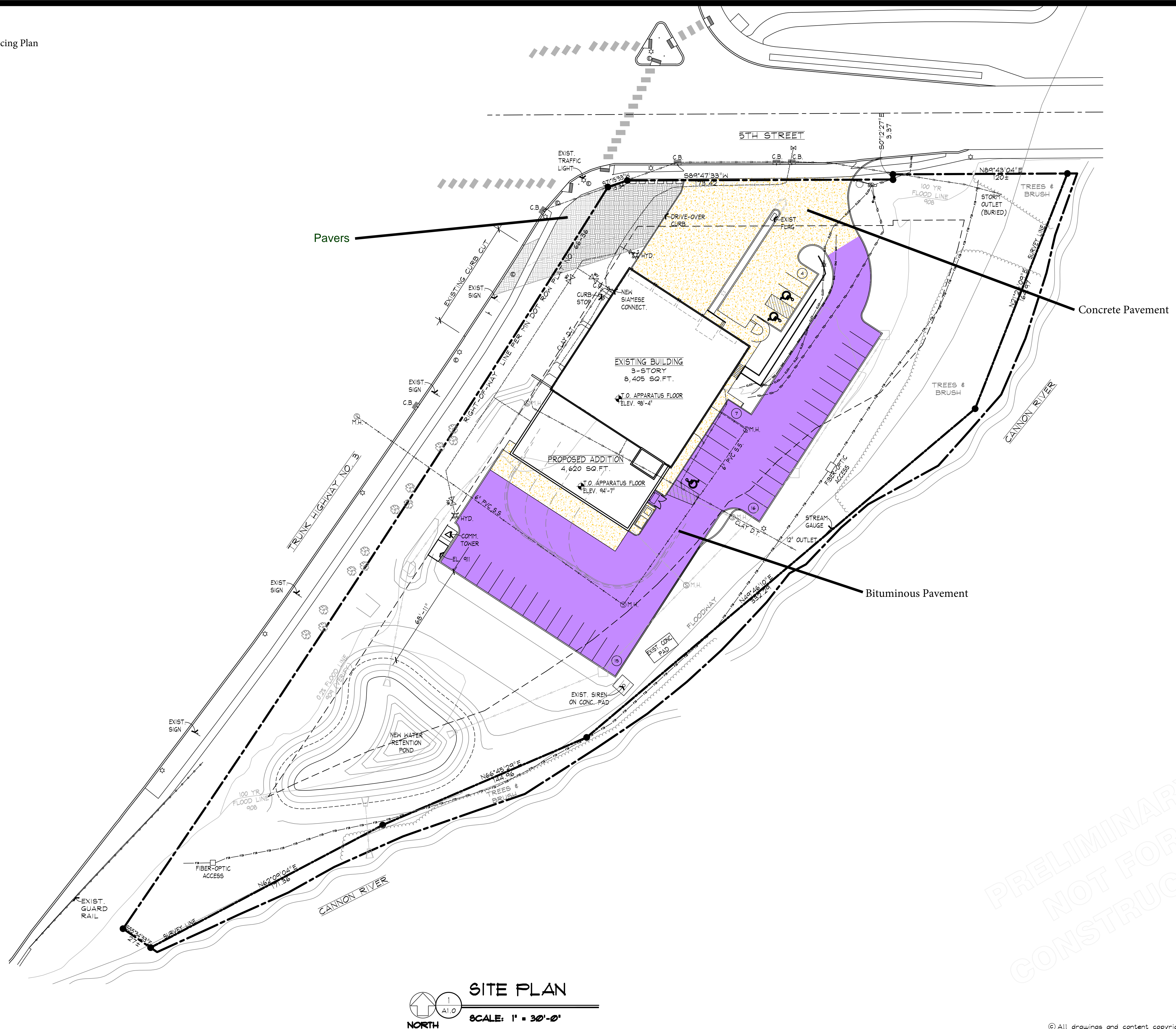
CONSULTANT

 Responsive partner. Exceptional outcomes.

PROJECT TITLE
 NORTHFIELD FIRE STATION ADDITION
 CITY OF NORTHFIELD

SHEET TITLE
 LANDSCAPE PLANTING PLAN

| | | | | |
|-------------|-----------|-------|----------|------------|
| DWN BY | CHK'D | APP'D | DWG DATE | APRIL 2017 |
| MJS | | | SCALE | AS SHOWN |
| PROJECT NO. | SHEET NO. | L-103 | | REV NO. |



SITE PLAN
 SCALE: 1" = 30'-0"
 NORTH

| | |
|-----------|--------|
| DESIGNED | DJM |
| DRAWN | LMH |
| CHECKED | DJM |
| PROJECT | 16-056 |
| REVISIONS | |

I hereby certify that this plan, specification or report was prepared by me or under my direct supervision and that I am a duly licensed architect under the laws of the state of Minnesota. (architectural only)

DAVID J. MEDIN

License No. 0896

Date Sep 29, 2017

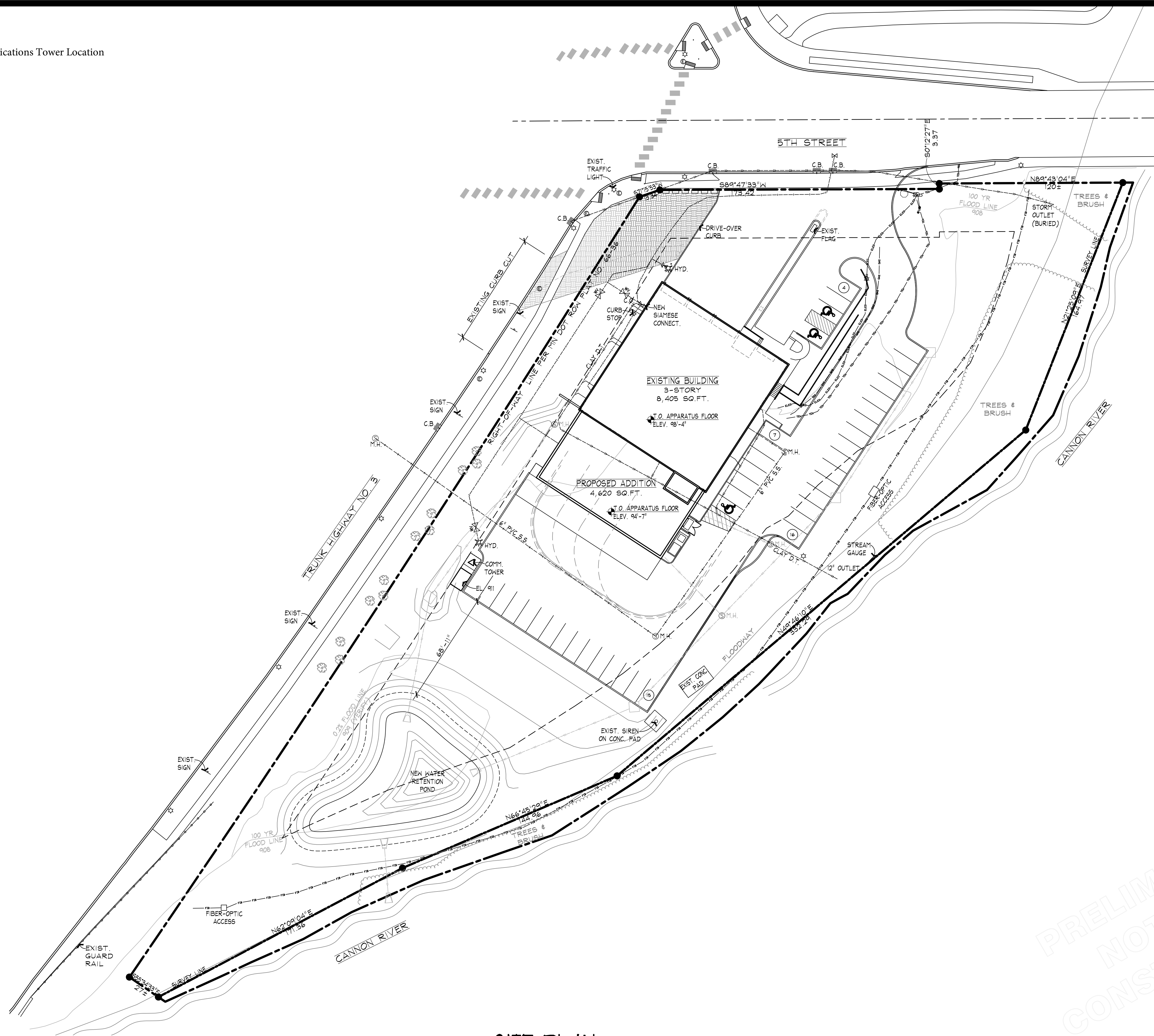
**NORTHFIELD
 FIRE STATION
 ADDITION AND ALTERATIONS**
 NORTHFIELD, MINNESOTA.

203 n.w. First Ave.
 Faribault, MN 55021
 507/334-2252

PRELIMINARY
 NOT FOR
 CONSTRUCTION



SITE PLAN
A1.0



SITE PLAN
 SCALE: 1" = 30'-0"
 NORTH

| | |
|-----------|--------|
| DESIGNED | DJM |
| DRAWN | LMH |
| CHECKED | DJM |
| PROJECT | 16-056 |
| REVISIONS | |

I hereby certify that this plan, specification or report was prepared by me or under my direct supervision and that I am a duly licensed architect under the laws of the state of Minnesota. (architectural only)

DAVID J. MEDIN
 License No. 0898
 Date Sep 26, 2017

**NORTHFIELD
 FIRE STATION
 ADDITION AND ALTERATIONS**
 NORTHFIELD, MINNESOTA.

203 n.w. First Ave.
 Faribault, MN 55021
 507/334-2252

PRELIMINARY
 NOT FOR
 CONSTRUCTION



SITE PLAN
A1.0