

MINNESOTA HISTORY / ARCHITECTURE INVENTORY FORM
NORTHFIELD COMMERCIAL HISTORIC DISTRICT
Rice County, Minnesota

PROPERTY LOCATION	
Property Name: Ebel Block	Inventory No.: RC-NFC-272
Address: 307 S. Water Street (addressed with 311 S. Water Street), Northfield, MN	PIN: 2236476008
QTR/QTR/T/R/S: SE SE Section 36 T112N R20W	
USGS Quad: Northfield, Minnesota	Plat Name: Cannon River W. Add Block: 3 Lot 6
UTM Z 15 487160E, 4922657N and 487159E, 4922642N NAD 83	

PROPERTY INFORMATION	
Construction Date: 1907	Style: Commercial Style
Historic Use: commercial	Current Use: commercial
Property Type: commercial	Historic Context: "Commerce, 1856-1945"
Architect/Builder Minneapolis Brewing Company	Survey Name: Northfield Historic District Survey Revision Project, 2016
Previous NRHP Status: Contributing to Northfield Commercial Historic District	NRHP Recommendation: Contributing to Northfield Commercial Historic District
Form Prepared by: Landscape Research LLC	Survey Date: 3/2016



2016, looking east



ca. 1938

Description

The two-story, cream brick building rests on a stone foundation and faces west on S. Water Street. The façade is divided into three bays by pilasters; two contain four window openings and the south bay has three. There is a deep cornice at the roofline accented with large brackets and modillions and a brick corbel course extends across the facade. Each window has an arched surround with short corbel stops and a stone sill. Windows contain modern one-over-one sash. There is a dogtooth brick panel beneath each window. Brick piers divide the three storefronts; each has a historically compatible design. The exposed portions of the piers reveal the limestone ashlar masonry. The north elevation is coursed limestone rubble. The south elevation is yellow brick. Two small, one-story buildings, dating from after ca. 1910 and originally shops, are attached to the north side of the Ebel Block (RC-NFC 401, 402). They have had extensive exterior renovation and are not included in the district. (The south elevation of the Ebel Block abuts the State Bank Building (1910; RC-NFC-271).

History

Built on a site previously occupied by the Livingston bicycle shop and other frame buildings, this building housed the mercantile business of William Ebel. William Roell's hardware store was originally an occupant and, by 1945, the Hughes and Heckler Hardware Store occupied 305. Prior to the construction of Highway 3, this was the center of a small commercial district around the railroad depot, the 4th Street Bridge, and grain mill and elevator.

MINNESOTA HISTORY / ARCHITECTURE INVENTORY FORM
NORTHFIELD COMMERCIAL HISTORIC DISTRICT
Rice County, Minnesota

Significance and Evaluation

This building is associated with the third period of Northfield's commercial development, from ca. 1880 to 1900, when 14 of the 65 historic district buildings were constructed. It is associated with the Northfield historic context, "Commerce, 1856-1945" (Northfield Preservation Plan, 1992).

This property was listed on the NRHP in 1979 as contributing to the Northfield Commercial Historic District. The building exterior has been rehabilitated and continues to retain historic significance and integrity and is contributing to the historic streetscape and district. The adjacent one-story structures (301 and 303 S. Water Street) are now addressed with this building but are not included in the historic district.

References

Edwins, Steve, ed. *Northfield Downtown Guidebook*. Northfield Heritage Preservation Commission, 1982.

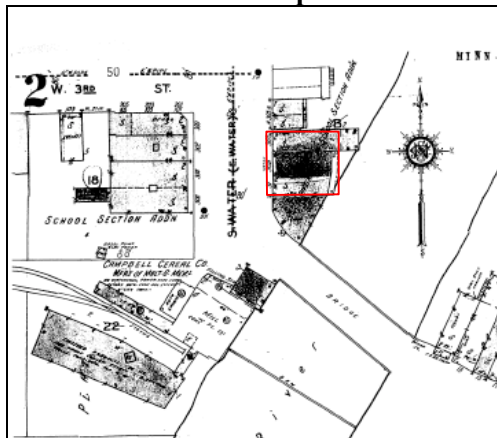
"Northfield Historic District," National Register of Historic Places Nomination, 1979.

Northfield Historical Society. Photograph and research files. Northfield, Minnesota.

Sanborn Map & Publishing Company, New York. Northfield plates, 1886-1943.

Zellie, Carole. "Northfield Heritage Preservation Plan." Prepared for the Northfield Heritage Preservation Commission, Northfield, Minn. by Landscape Research, 1992.

Sanborn and USGS Maps



Sanborn Map and Publishing Co., 1930, updated 1943.



USGS Northfield 1984