



PARTNERS IN ENERGY
An Xcel Energy Community Collaboration

Partners in Energy Kickoff Meeting

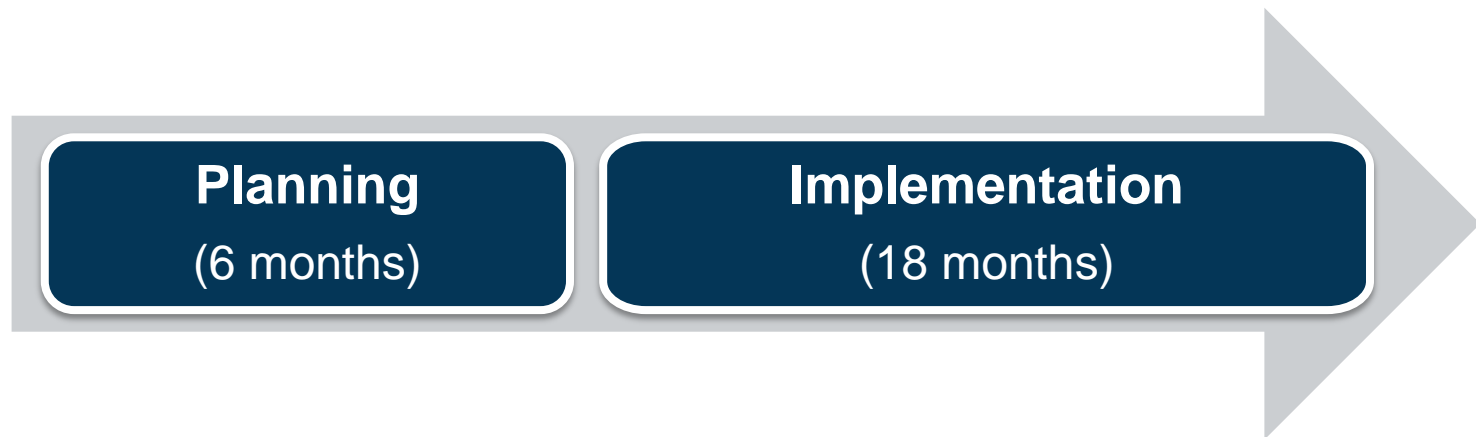
Northfield, MN | September 13, 2018

What is Partners in Energy?

Partners in Energy Scope

What is Partners in Energy?

- Partners in Energy is a *two-year* collaboration with Xcel Energy to develop and implement your energy plan goals
- Xcel Energy provides tools and resources to enable community-driven energy planning and implementation

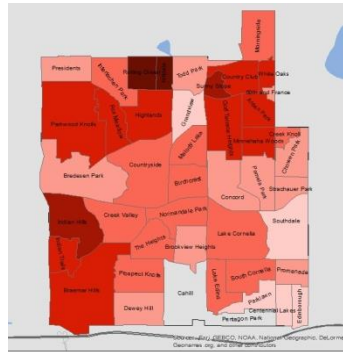


Resources for Planning

A variety of resources are available to support the planning phase.



**Facilitation
& Guidance**



Data



**Project
Management**

Plan Development Steps




Energy Action Plan

- Ultimate planning phase outcome
- Plan for pursuing the Community's Energy Vision
- Guides implementation



Resources for Implementation

A variety of resources are available to support the implementation phase.

**EnerGize Your Home**

EnerGize MapLeWood Residential EnerGize

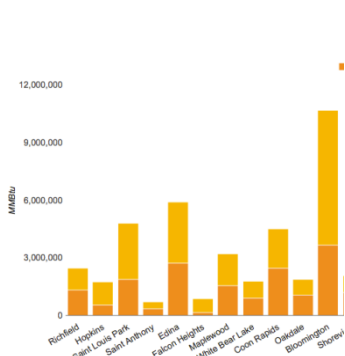
Challenge beginning this FALL, form or join team NOW

Things to know:

- 6 month challenge sponsored by Maplewood and Xcel
- You can form a team or join an existing team
- Through energy actions, tracking, and friendly compet participants will work to be the "biggest loser" and re their energy footprint- and get prizes for winning!
- All Xcel Energy customers are eligible to participate

For More Information:
www.ci.maplewood.mn.us/energychallenge

XCEL ENERGY IS PLEASED TO PARTNER WITH YOUR COMMUNITY TO HELP YOU...



Add "Saving Money" to Your Winterizing Checklist

This season, why not join other businesses saving an average of 7% to 10% per year from better energy management? We'll be tracking by month half your energy bill during winter months, making energy-saving improvements—matched by those money-saving initiatives—will pay off in no time next fall.

- Replace your boiler.**
Upgrade to a high-efficiency boiler and reduce fuel consumption. Run gas temperatures and antifreeze—offering significant energy savings. We have four rebate opportunities including a rebate average of **\$10K** per boiler (EPA rebate program) up to a 25% efficiency boiler.
- Tune up your boiler.**
Burn less oil and more energy, extend the life of your heating system, and reduce breakdowns. Receive a rebate of 20% of the cost of each boiler tune-up every two years—up to **\$2K** per boiler.
- Wipe your pipes.**
Insulating pipes can reduce energy losses by between 5% and 10%. We have three levels of rebate, depending on pipe dimensions. By wrapping a four-inch pipe with an R-value of 4.5, you can save **\$200** in energy 100 feet.
- Install VFDs.**
Preventing steel drum energy buildup losses by taking the energy out of the motor. Reduce additional electrical energy by installing Variable Frequency Drives (VFDs) on all existing units and new motors. Rebates vary, offering savings between **\$500** and **\$1,000** per VFD, from 1 to 250 HP.

Additional rebates:
Managing energy use with a control system adds more savings by diverting energy wastes, increasing comfort and improving the life of your equipment. We have control systems available, so we determine a credit incentive based on the energy savings potential of your specific control system. That business can save rebates up to **\$400** per Kilowatt (KW) and **\$5** per DataCenter (DC) load.

REBATE PROGRAM	REBATE
Boiler Rebate	\$10K/boiler
Energy Rebate	\$10K/boiler
Boiler Rebate	\$10K/boiler
Energy Rebate	\$10K/boiler



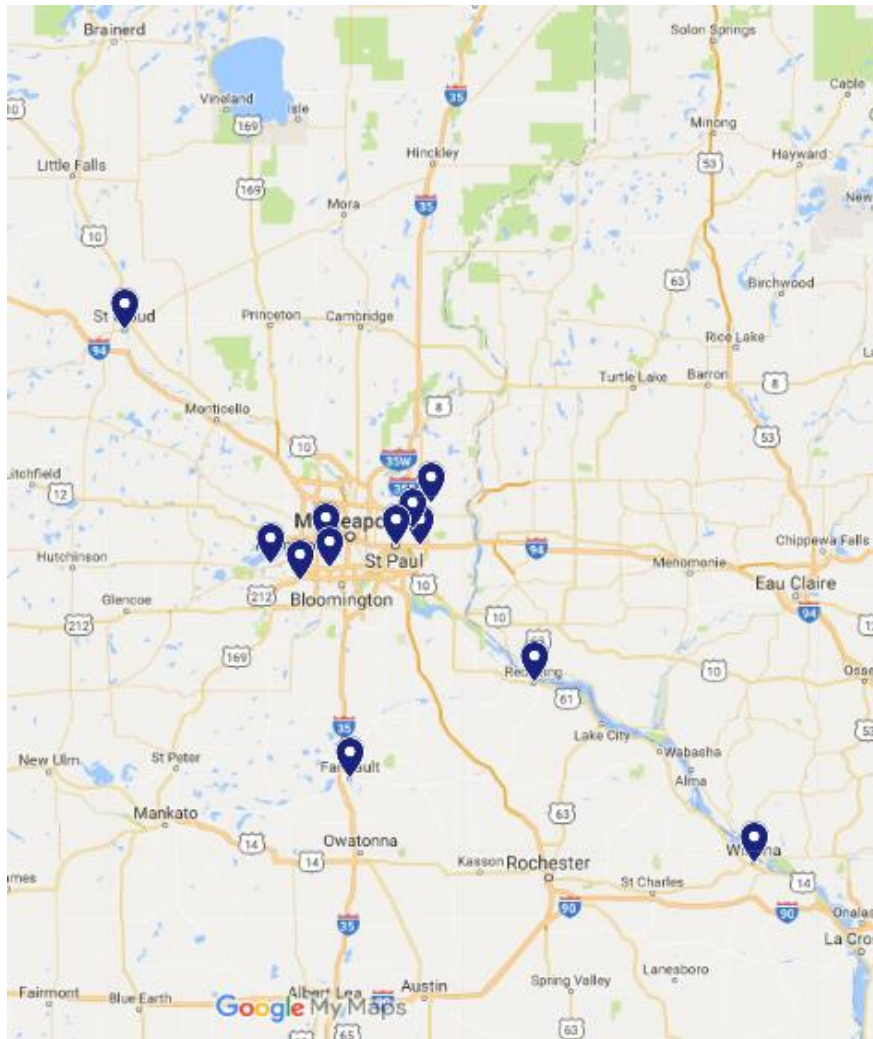
Marketing and Communications

Data Tracking/ Measurement

Program Expertise

Project Management

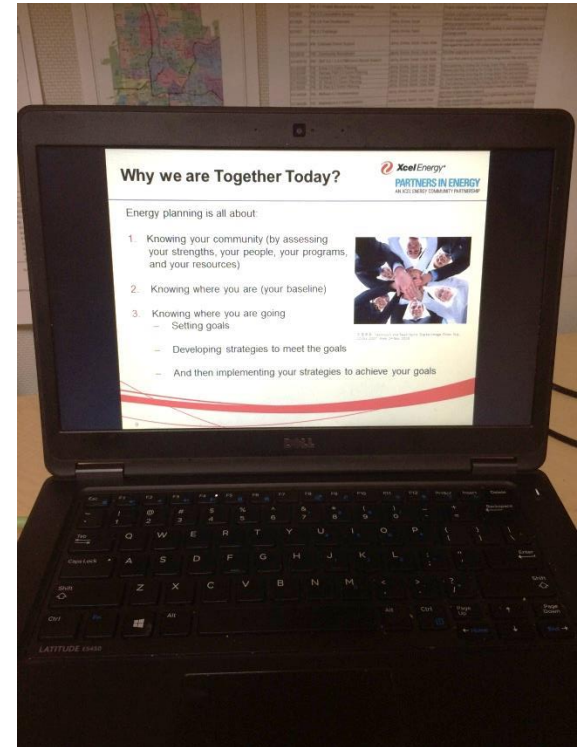
Other Minnesota Communities



- Lake Street Corridor in Minneapolis
- City of Maplewood
- City of Saint Louis Park
- City of Edina
- Ramsey County Parks and Recreation Department
- City of Faribault
- City of Saint Cloud
- City of Saint Paul
- City of Winona
- City of Eden Prairie
- City of Mahtomedi
- City of Shorewood
- City of Bloomington
- City of Rosemount
- City of Fridley
- City of Red Wing
- City of Hastings

The Exchange

- Webinars and office hours
 - Opportunities to share with and learn from other participating communities developing and implementing their own Energy Action Plans



Xcel Energy's Goals

- Develop a better understanding of the energy needs of communities we serve
- Better align the services and programs we offer with customer needs to save energy and advance clean energy goals
- Strengthen relationships with the community and support the Xcel Energy philosophy of community engagement



[Photo](#) by Meet Minneapolis / [CC BY](#)



[Photo](#) by Tina Chen / [CC BY](#)




[Photo](#) by Tanner Ford / [CC BY](#)

Xcel Energy Team Roles

- Provide **facilitation** for the Energy Action Plan development
- Gather, process, and **share data**
- **Actively learn** more about customers' goals and needs
- Provide **customized access** to Xcel Energy programs & resources
- Provide transition into and **support during implementation**

Partners in Energy Team

Xcel Energy			Community Facilitators	
				
Tami Gunderzik	Yvonne Pfeifer	Community Relations Manager	Marisa Bayer	Jamie Johnson

Community Lead

- Responsible for serving as a liaison and coordinator for community participants
- Anticipate spending up to 100 hours over the six month planning phase on the following activities:
 - Coordinating the recruitment of the Energy Action Team
 - Gathering community data to enhance the community's baseline
 - Keeping work moving between workshops
 - Reviewing the plan document
 - Facilitate the transition from planning to plan implementation

Energy Action Team



Energy Action Team Roles

- Represent your organization (**Representative**)
- Be a critical eye for credibility, transparency, and accuracy (**Critical Thinking**)
- Advise City Council and/or Sustainability Commission (**Advisor**)
- Be a conduit to your network (**Ambassador**)
- Attend planning workshops over six month period (Approx. 15-20 hours)

Energy Action Team Participants

- **Relevance to the Plan**
 - Utilities
- **Ability to authorize and implement strategies**
 - Workforce and educational providers
 - Faith-based leaders
 - Chamber members
 - Civic leaders
- **City staff**
 - Community development
 - Economic development
 - Land use planning
 - Environmental staff
- **Larger sources of emissions**
 - K-12 energy managers
 - Large employers
 - Manufacturing
 - Hospitals
- **Expertise**
 - Energy policy, advocacy, or technical experts
 - Regional and state partners



Recipe for Success

Successful energy initiatives have six ingredients:

6 Ingredients	Questions
Energy Opportunities	Where can energy be saved or renewable energy be sourced?
Strategic Timing	When should actions take place?
Doers	Who will take action?
Communication Channels	What is going on?
Political Support & Leadership	Why does this work matter to the community?
Financial & Program Resources	How will the initiative be supported?

Questions About Partners in Energy?



PARTNERS IN ENERGY
An Xcel Energy Community Collaboration