

MINNESOTA HISTORY / ARCHITECTURE INVENTORY FORM
NORTHFIELD COMMERCIAL HISTORIC DISTRICT
Rice County, Minnesota

PROPERTY LOCATION	
Property Name: Nutting Addition	Inventory No.: RC-NFC-370
Address: 105-07 E. 4th Street, Northfield, MN	PIN: 2206225010
QTR/QTR/T/R/S: NW NW Section 6 T111N R19W	
USGS Quad: Northfield, Minnesota	Plat Name: Original Town Block: 23 Lot: 9
UTM Z 15 487291, 4922580 NAD 83	

PROPERTY INFORMATION	
Construction Date: 1887	Style: Commercial Style
Historic Use: commercial	Current Use: commercial
Property Type: commercial	Historic Context: "Commerce, 1856-1945"
Architect/Builder	Survey Name: Northfield Historic District Survey Revision Project, 2016
Previous NRHP Status: Contributing to Northfield Commercial Historic District	NRHP Recommendation: Contributing to Northfield Commercial Historic District
Form Prepared by: Landscape Research LLC	Survey Date: 3/2016



2016, looking north



2004, looking northwest

Description

The three-story Nutting Addition faces south. It adjoins the Nutting Building (327 Division Street; RC-NFC-293) at the east. The building façade is clad in tan brick, with brick stringcourses surmounting the band of rectangular windows at the upper story and the storefront windows at the ground level. The wood cornice has a band of slender modillions. The party wall is common brick, with segmental-arched windows. Quoins were executed in a darker shade of brick at each corner and a band of an arched motif the same brick was applied to the frieze. The upper story windows have flush voussoirs, with rusticated, buff-colored stone sills. The same material is used in the second-story lintels and sills. The storefronts have been updated, with infilled transoms and modern glass, but maintain the spirit of late 19th-century designs.

History

During its first years the Nutting Addition housed the restaurant and bakery of William Rebstock and the dental office of Dr. E.G. Ridell. A millinery store (the Northfield Hat Shop) was in operation into the 1930s, and Irwin's Flowers 1960-1972. First National Bank renovated the storefronts in 1982.

MINNESOTA HISTORY / ARCHITECTURE INVENTORY FORM
NORTHFIELD COMMERCIAL HISTORIC DISTRICT
Rice County, Minnesota

Significance and Evaluation

This building is associated with the second period of Northfield's commercial development, from ca. 1880 to 1900, when 29 of the 65 historic district buildings were constructed. It is associated with the Northfield historic context, "Commerce, 1856-1945" (Northfield Preservation Plan, 1992).

This property was listed on the NRHP in 1979 as contributing to the Northfield Commercial Historic District. It retains good historic significance and integrity and remains contributing to the district.

References

Edwins, Steve, ed. *Northfield Downtown Guidebook*. Northfield Heritage Preservation Commission, 1982, 16.

"Northfield Historic District," National Register of Historic Places Nomination, 1979.

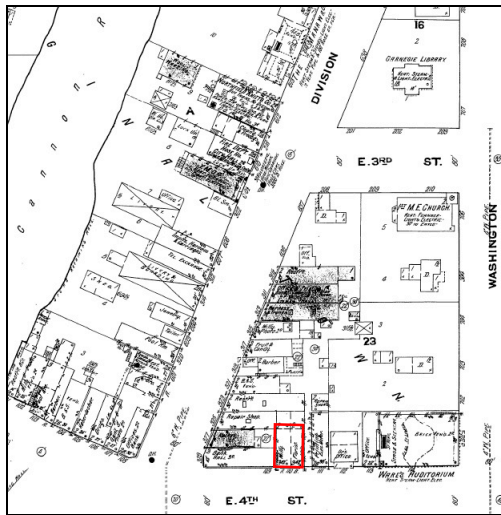
Northfield News. *All About Northfield, Minn: Directory of Name and Business Firms, Information in Regard to the City*. Northfield: Northfield News, 1889.

Northfield Historical Society. Photograph and research files. Northfield, Minnesota.

Sanborn Map & Publishing Company, New York. Northfield plates, 1886-1943.

Zellie, Carole. "Northfield Heritage Preservation Plan." Prepared for the Northfield Heritage Preservation Commission, Northfield, Minn. by Landscape Research, 1992.

Sanborn and USGS Maps



Sanborn Map and Publishing Co., 1910



USGS: Northfield 1984.