

November 12, 2019  
City Council Workshop

**City of Northfield  
TH246 & Jefferson Parkway  
Roundabout Project  
Landscaping and High School Crosswalk**



# Project Location



# City Plans

## Gateway Plan (2012)

- Identified landscape enhancements for the corridor and intersection.
  - Native prairies
  - Natural woodlands
  - Cultural influences of past agricultural uses in the region.

# City Plans

## Proposed Plan

- Using:
  - Native upland prairie grasses and wildflowers
  - Small groupings of native overstory and understory trees
  - Massings of native shrubs
  - Intentionally placed plantings of perennials and low shrubs
  - Boulevard trees planted in linear form and hints of evergreen wind rows
  - Additional features for enhancing the project area include:
    - public art
    - wayfinding signage
    - trailhead amenities
    - site furnishings
    - pedestrian scale lighting.



# TH 246 & JEFFERSON PARKWAY ROUNDABOUT

## Trailhead Node



Trail Way Finding Signage



Trail Node Amenities



Trail Node Amenities



## Planting Palette



SHADE TREE



Honeylocust



Hackberry



Swamp White Oak



ORNAMENTAL TREE



Crabapple



Japanese Tree Lilac



CONIFEROUS BUFFER TREES



Black Hills Spruce



NATIVE SEEDING



Native Seed Mix Prairie



Native Seed Mix Prairie



SHRUB MASSING



Sumac



Juniper



Bush Noneyuckle



Spiraea



PERENNIAL MASSING



Dwarfly



Catmint



Tall Sedum

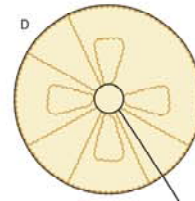
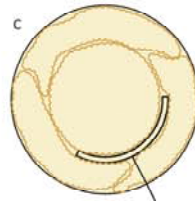
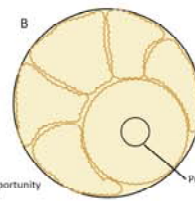
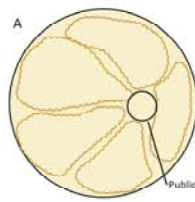


Purple Coneflower



Switchgrass

## Roundabout Design



Roundabout Example  
River Falls, MN

## Art Opportunities



Murals in Tunnel



Light Tunnel



Art in Roundabout



Art in Roundabout



Roundabout Example  
Cottage Grove, MN



Roundabout Example  
Eagan, MN



Roundabout Example  
Columbia Heights, MN



Roundabout Example  
Edina, MN



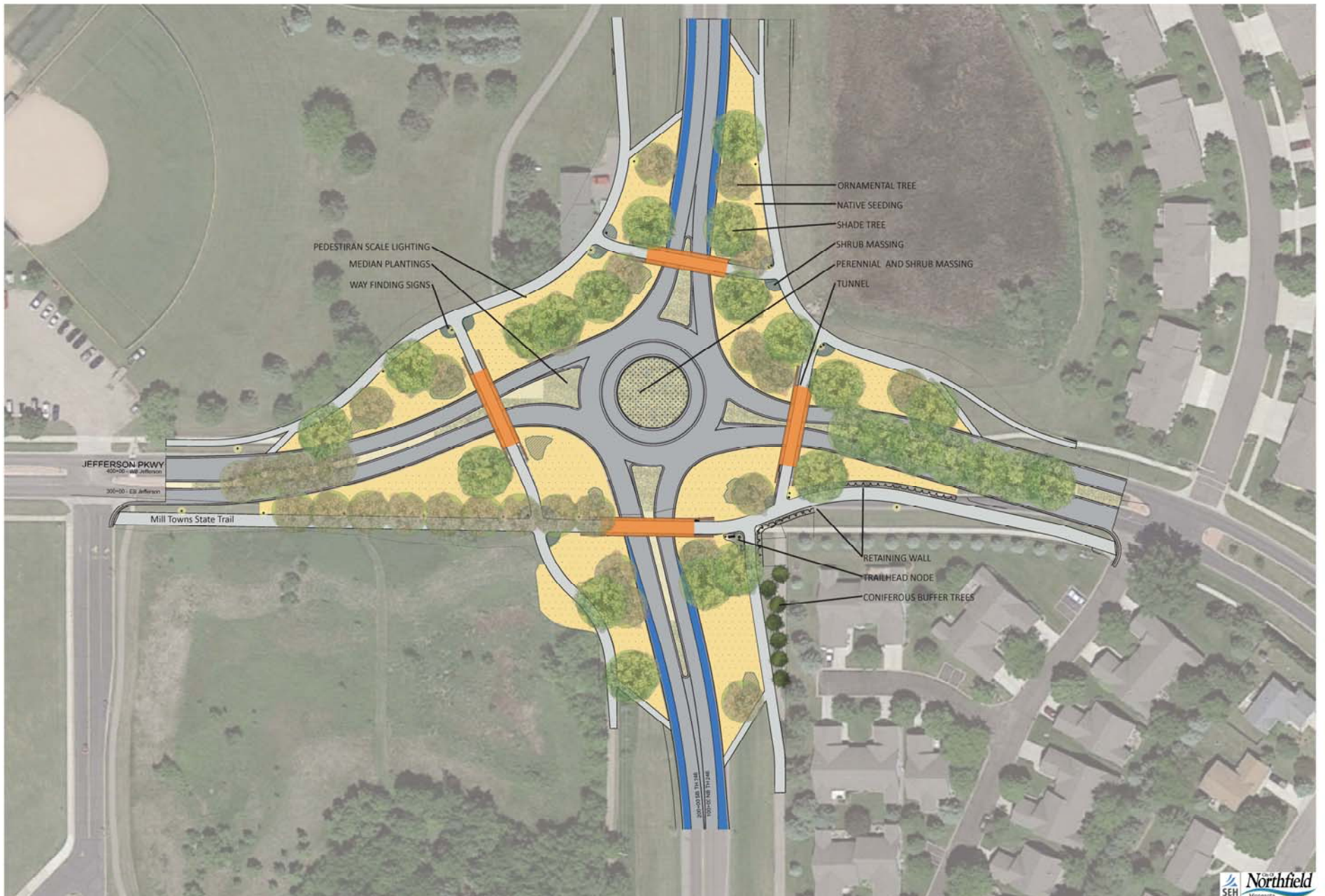
Roundabout Example  
Chippewa Falls, WI



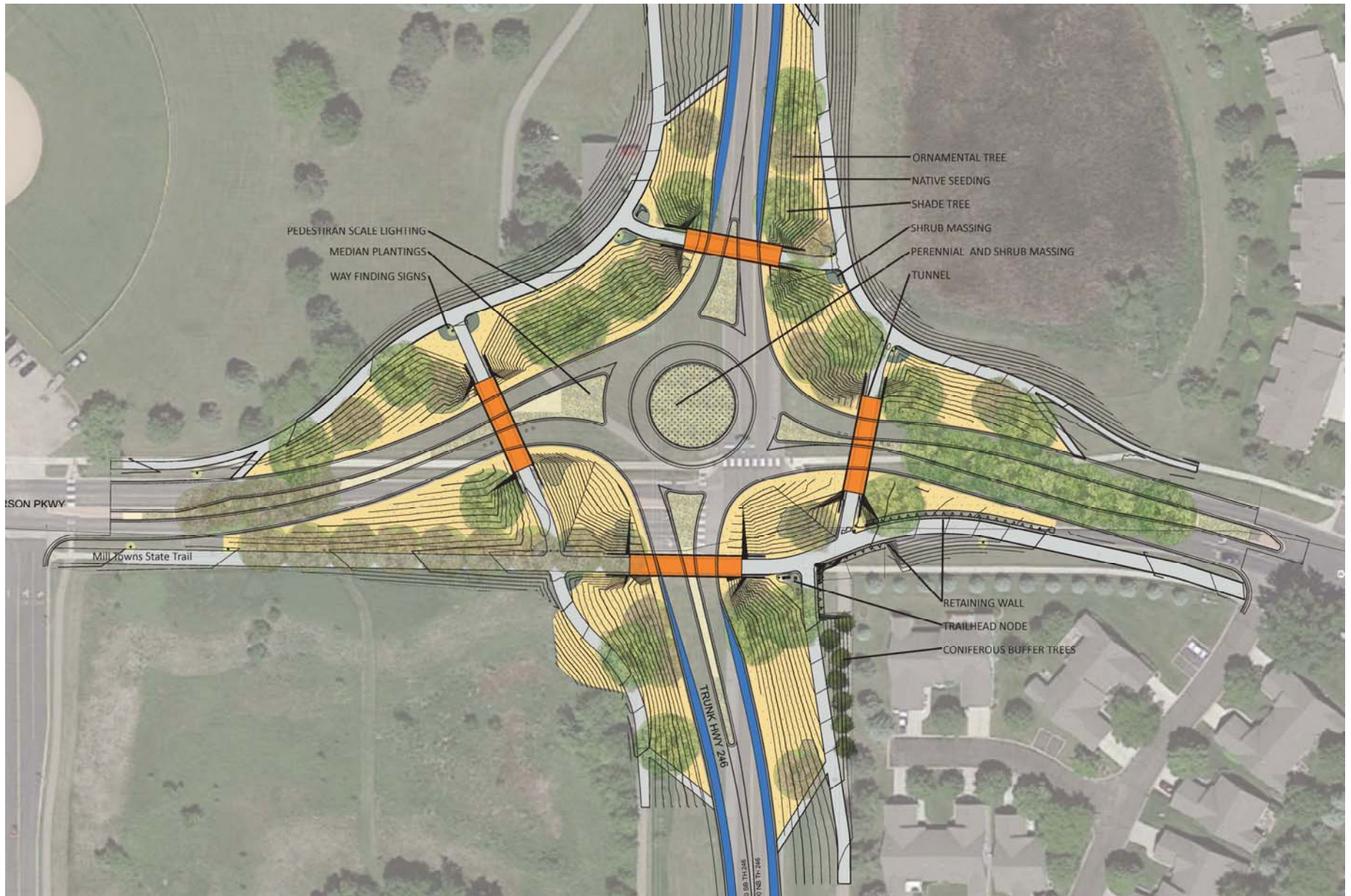
Roundabout Example  
St Louis Park, MN



# TH246 & JEFFERSON PARKWAY ROUNDABOUT

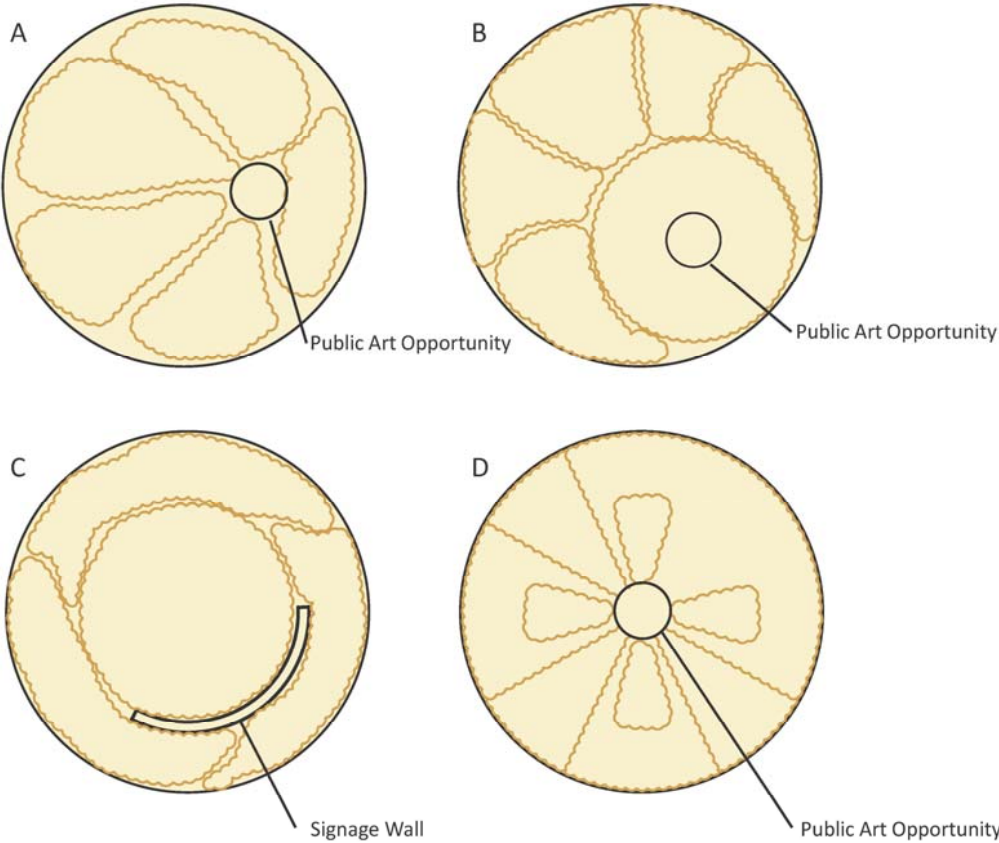






# Roundabout Landscaping

Roundabout Design





# Questions/Thoughts



# High School Pedestrian Crossing



# High School Pedestrian Crossing

## Rectangular Rapid Flashing Beacon System (RRFB)

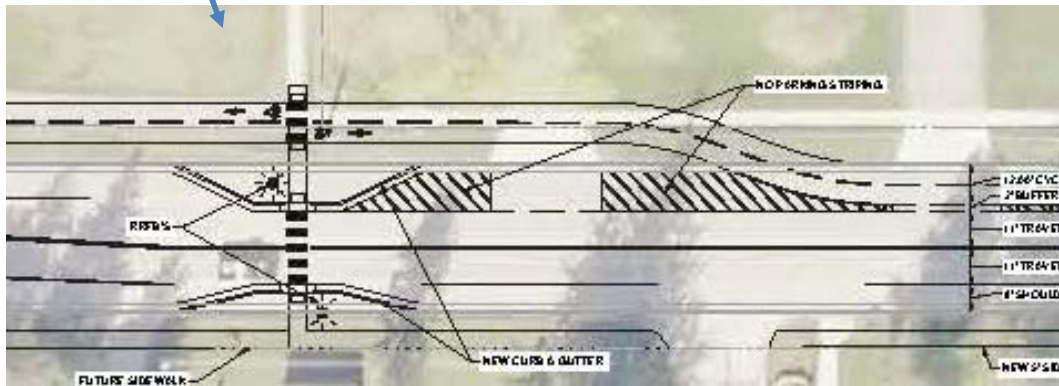
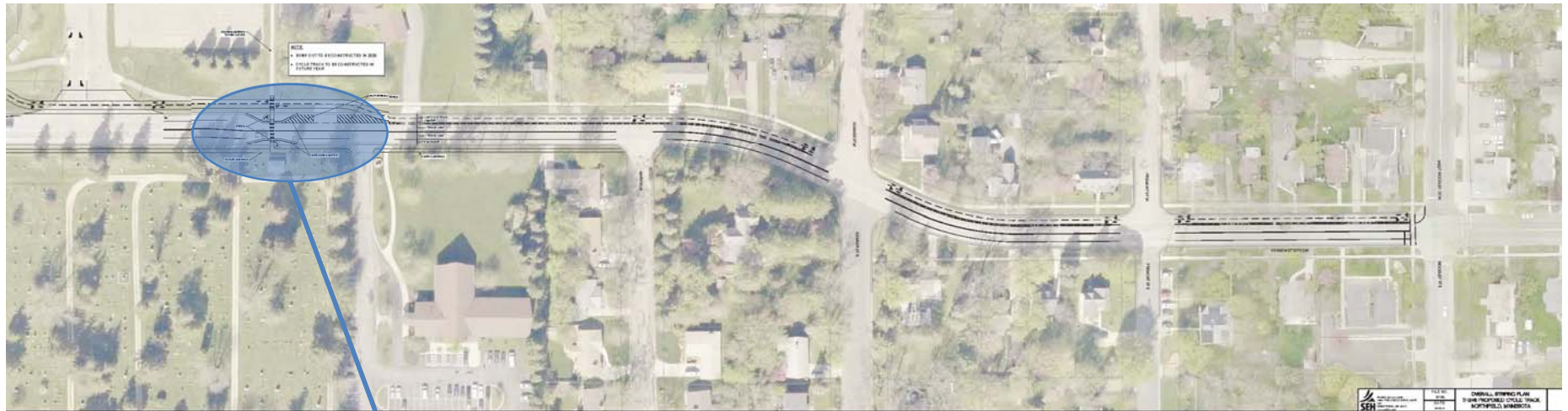
- Warning Device
- No warrants needed / engineering study
- Good for mid-block locations
- Side of road mounting for low speed two lane roadways
- Pedestrian activated
- 85-95% drivers yield
- \$20K to \$50K cost (side of road)





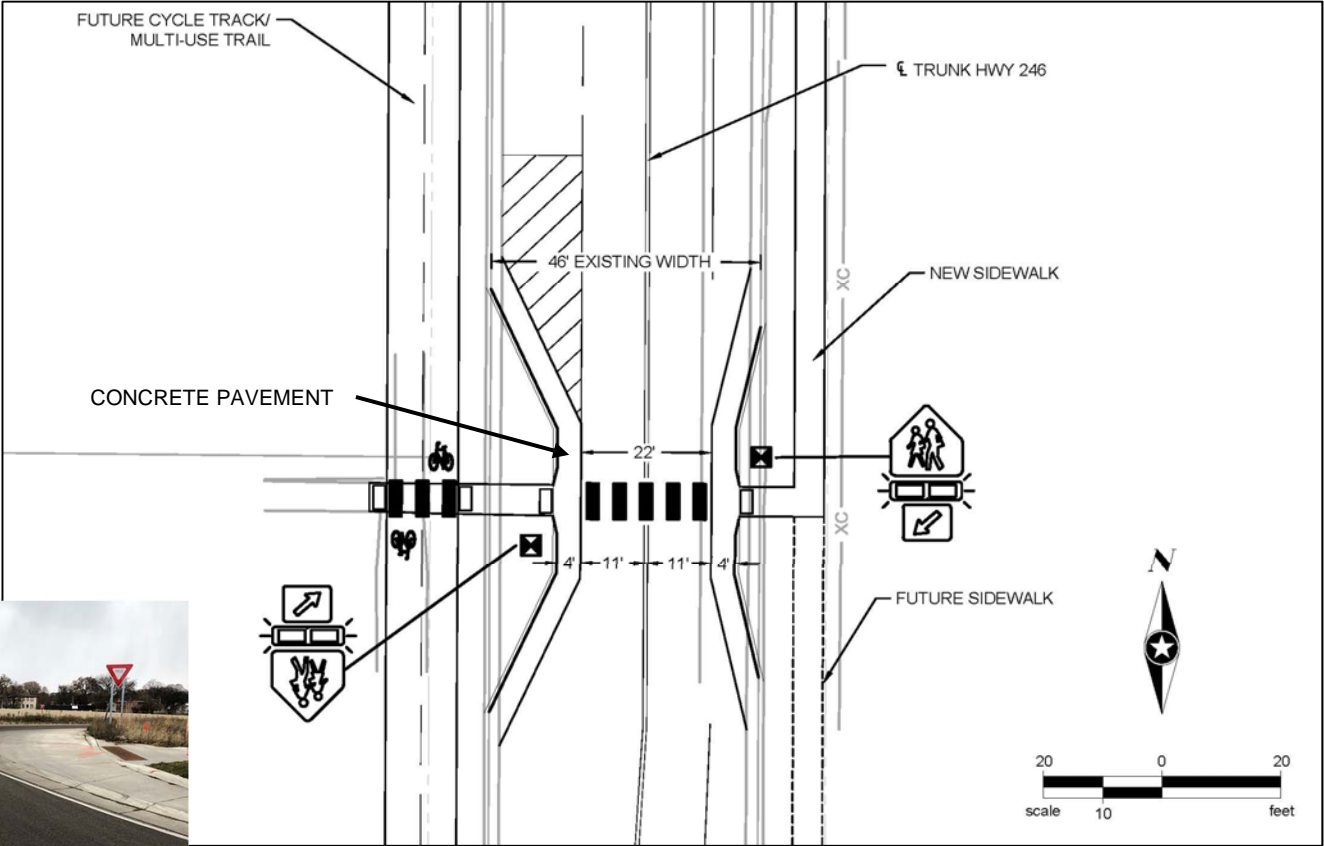
# High School Pedestrian Crossing

## Future Cycle Track:



# High School Pedestrian Crossing

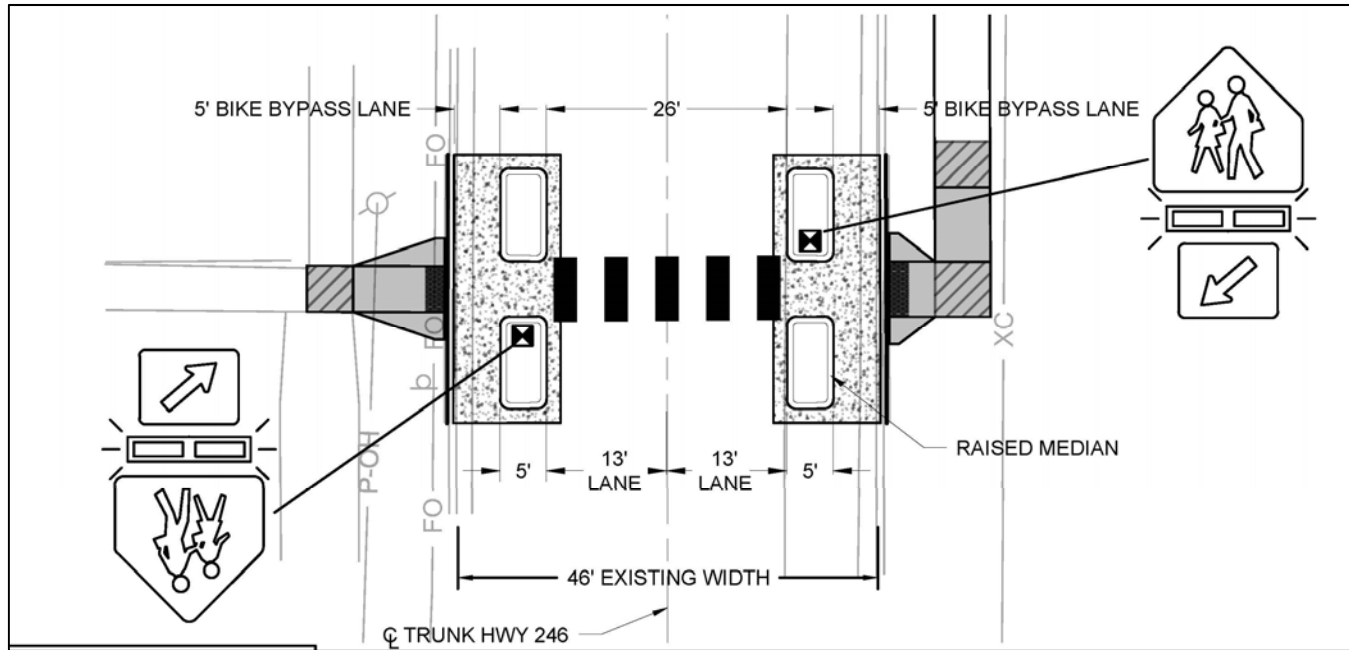
## Option 1:



Concrete Pavement Example

# High School Pedestrian Crossing

## Option 2:





# Questions/Thoughts

