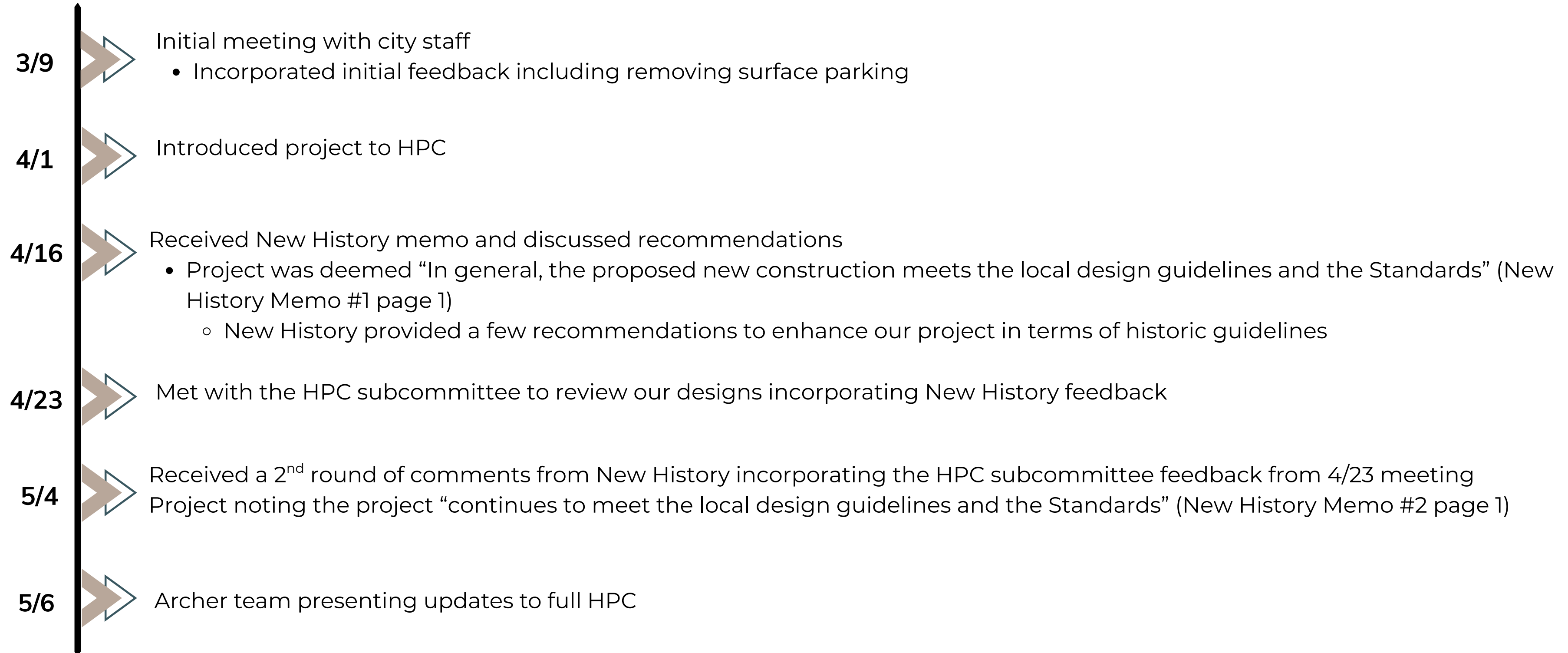


Archer Project Updates

EAST - CONCEPT RENDERING



Timeline to Date:



3/9/26 Version (Division side)



3/9/26 Version (Riverside)



4/16/26 Version



Added existing gate to
River from Division

4/16/26 Additional View from Library



4/16/26 Version



Beautified the entry off the River and added signage to help pathfinding to public restrooms

Surface parking removed and added patio here per city feedback activating Riverfront

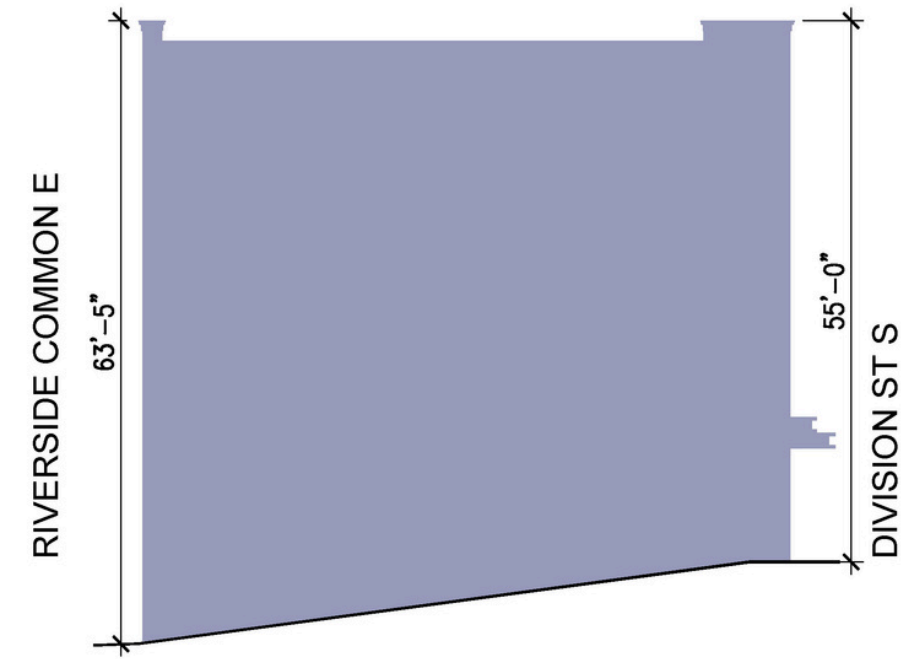
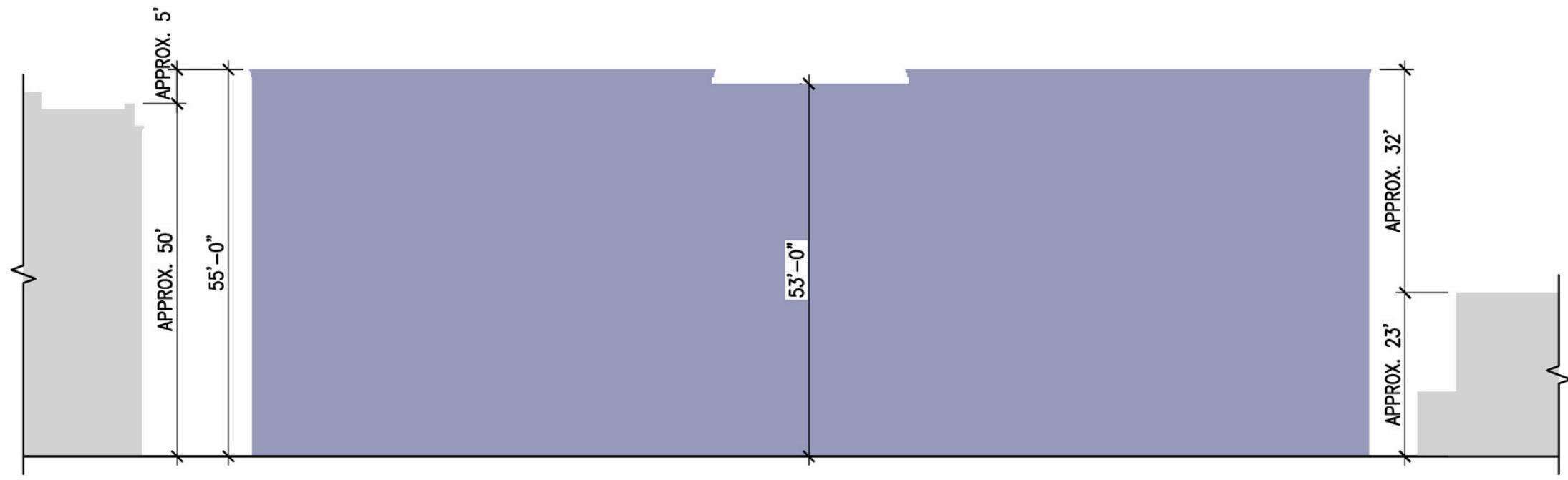
4/16/26 Version (Close-up on Patio)



4/16/26 (Additional Riverview)



AVERAGE BUILDING
HEIGHT: 59 FEET

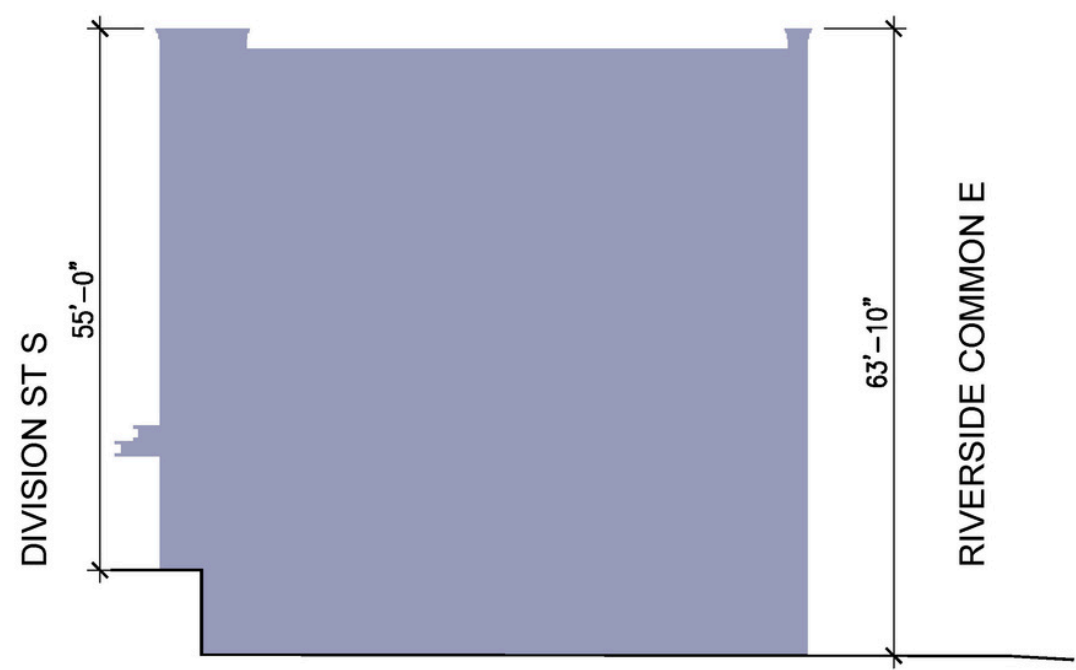


1 EAST ELEVATION
A1 DIVISION STREET

SCALE: 1" = 20'-0"

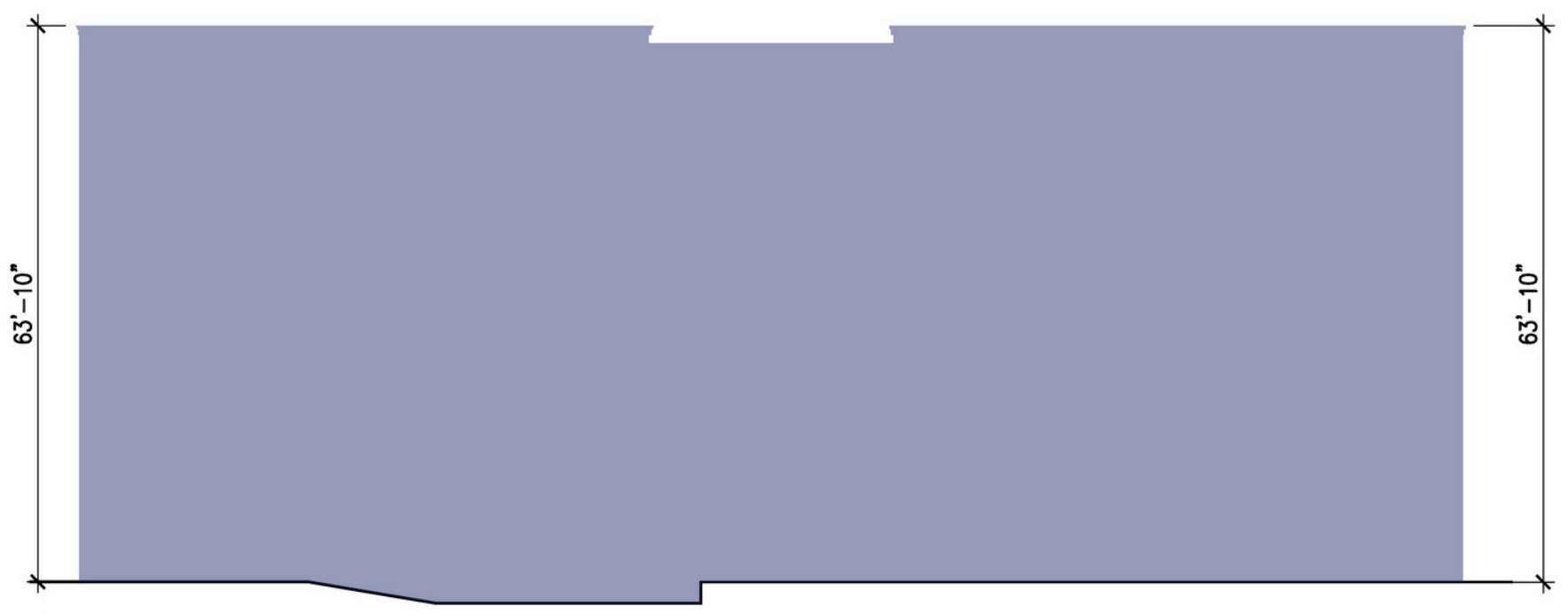
2 SOUTH ELEVATION
A1

SCALE: 1" = 20'-0"



3 NORTH
A1

SCALE: 1" = 20'-0"



4 WEST ELEVATION
A1 RIVERSIDE COMMON E

SCALE: 1" = 20'-0"



Northfield Hotel

Northfield, MN

March 14, 2026

4/16/26 (Height in Context)



4/16/26 (New History Memo #1)



4/23/26 Version

EAST - CONCEPT RENDERING



4/23/26 Version (NH Memo #1 Feedback)



4/23/26 Version

EAST - CONCEPT RENDERING



Timeline for Next Steps:

5/6



Archer team met internally to review 2nd memo based on 4/23 meeting and renderings and begin incorporating comments

Week of 5/11



Follow up meeting with staff, New History, and subcommittee (date TBD) to discuss feedback and Archer team's gameplan to implement changes prior to submittal by 5/22.

- Use ~ 2 weeks to incorporate into new renderings

6/3



Archer team to present final renderings to HPC for approval

- Matt will be out of town so Jay will be presenting to you all

5/13/26 Version (In Context)



5/13/26 Version



Variance and CUP

- We are applying for a variance for the height of the building to roughly 55'
- We are applying for a CUP for the 19 parking spaces planned in the basement garage entering off the backside of the building
 - We will maintain the right of way for the neighboring businesses

EAST - CONCEPT RENDERING

Questions or Comments?

Thank you!

HOTEL SIGNAGE

