



# 2020 Mill and Overlay Project

## Generalized Feedback from the Neighborhood Meeting

### ★ Popular Topics

- Significant street ponding at many locations. Causes slippery conditions in the winter.
- Bumpouts were controversial with noted safety improvements, although majority of residents are opposed
- Bike and pedestrian concerns
- Many concerns relating to Carleton College – specifically heavy vehicles, parking options, and construction projects
- Significant commercial traffic
- Areas of erosion along boulevards

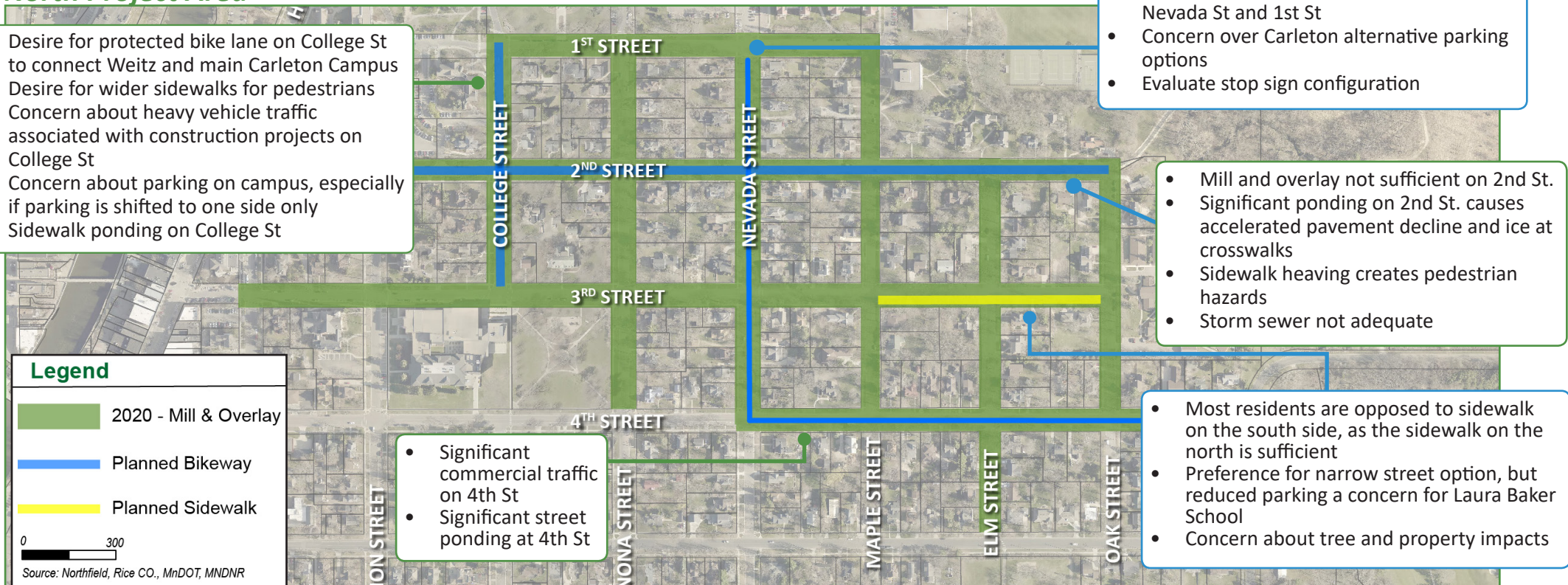
### 💬 General Comments

- Wide, undifferentiated streets encourage people to drive too fast.
- Minimal bike use – do not desire bike lanes.
- Feasibility study should address many improvements beyond mill and overlay.
- Desire to keep trees along street.
- On streets with sidewalks on one side, cost of sidewalk maintenance should be shared by properties on both sides.

### 📍 Site-Specific Comments

#### North Project Area

- Desire for protected bike lane on College St to connect Weitz and main Carleton Campus
- Desire for wider sidewalks for pedestrians
- Concern about heavy vehicle traffic associated with construction projects on College St
- Concern about parking on campus, especially if parking is shifted to one side only
- Sidewalk ponding on College St



### Neighborhood Meeting

October 2, 2019

5:30 p.m.

*City Hall Council Chambers*



About 35 Attendees



*For more info, visit*

[www.ci.northfield.mn.us/1313/2020-Mill-and-Overlay-Project](http://www.ci.northfield.mn.us/1313/2020-Mill-and-Overlay-Project)

#### South Project Area

