



# NORTHFIELD BRIDGE SQUARE

Design Updates

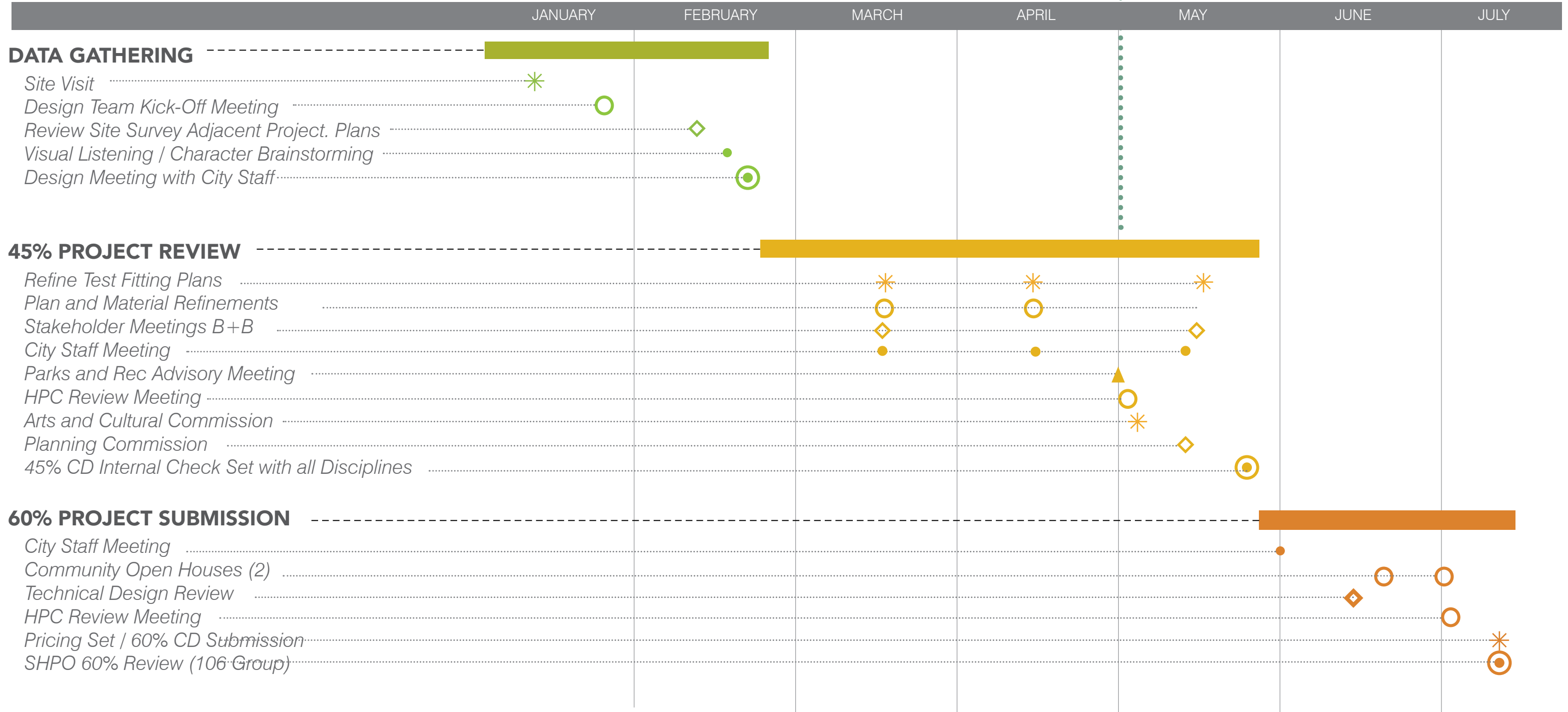
DF/ DAMON FARBER

City Of  
**Northfield**  
Minnesota

# SCHEDULE

WE ARE HERE

2023



# SCHEDULE

Park and Recreation Advisory Board

Monday, May 1st

Heritage Preservation Commission

Wednesday, May 3rd

Arts and Cultural Commission

Monday, May 8th

Planning Commission

Thursday, May 18th

Stakeholder engagement meetings

Ongoing

Internal 45% Check Set

May 25th

ROM Cost Estimate

June 8th

Mayor and City Council

June 20th for Council Meeting or June 13th Working Session

Heritage Preservation Commission

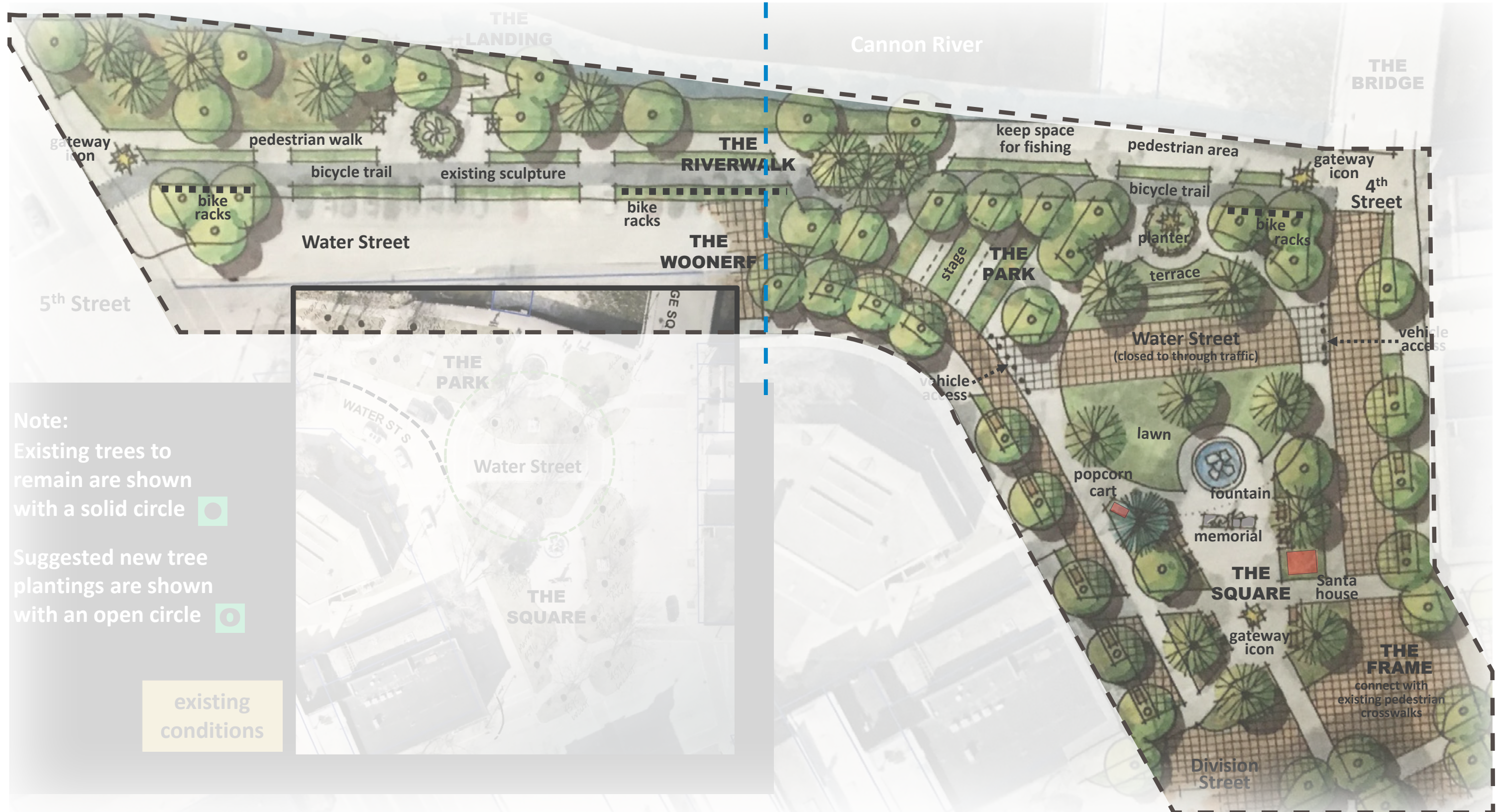
Wednesday, July 5th

**60% Documentation Final**

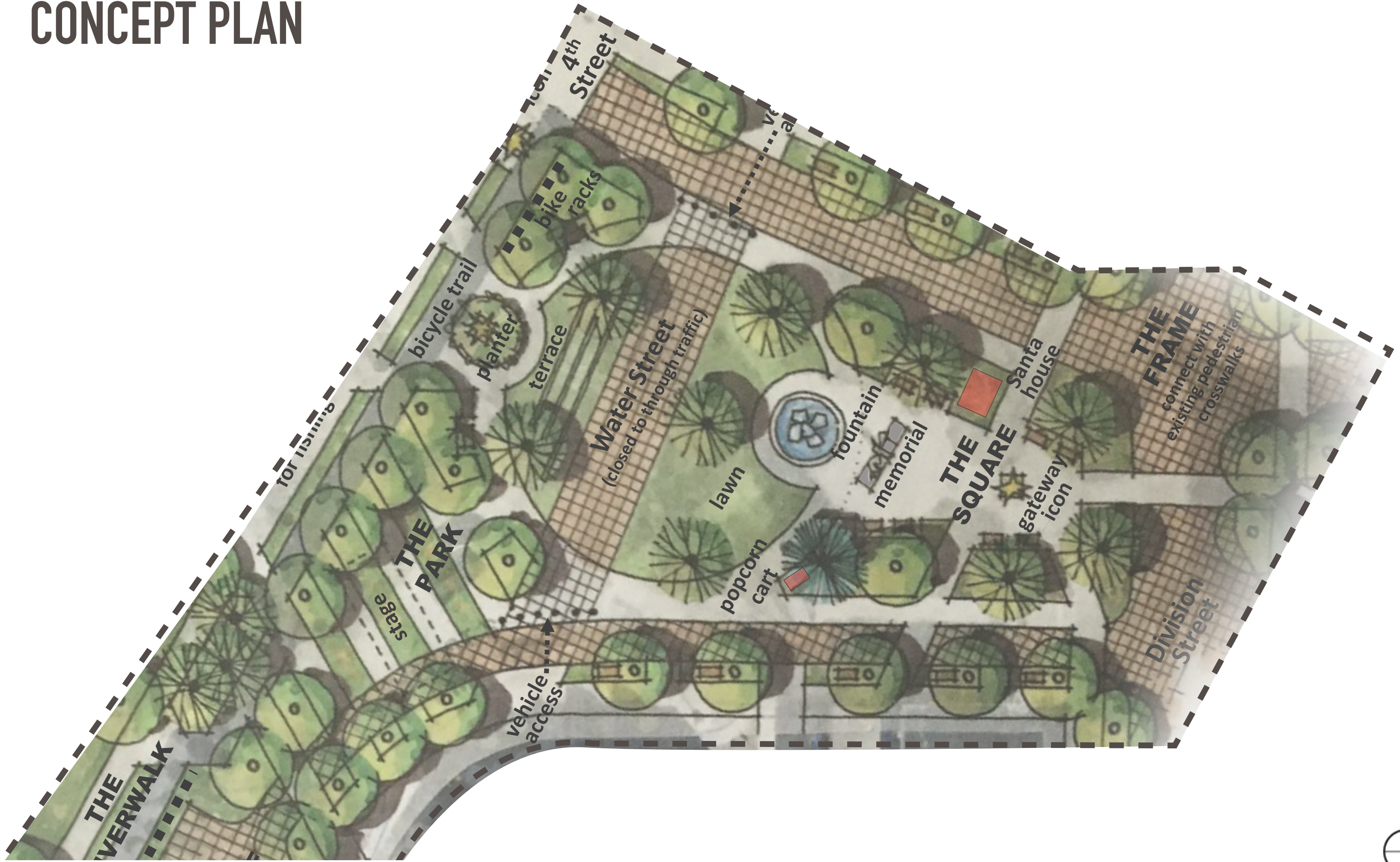
**July 19th**

# CONCEPT PLAN

PHASE 2 | PHASE 1



# CONCEPT PLAN

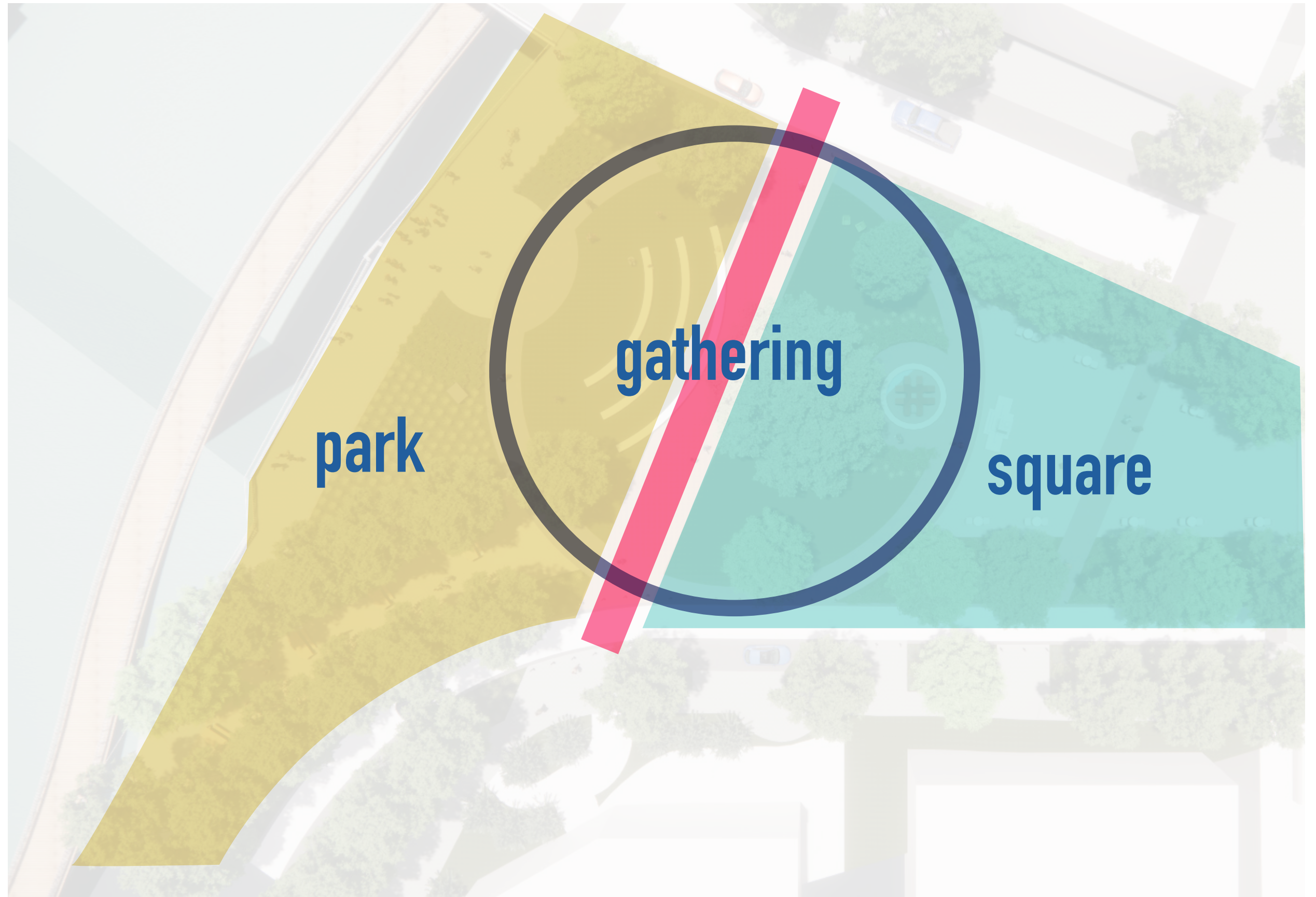


An aerial photograph of a city street grid, showing a river and a bridge. The image is faded and has a light beige tint. The text "SITE PLAN" is overlaid in the center in a bold, black, sans-serif font. The background shows a dense urban layout with various buildings, streets, and a river flowing through the city. A bridge crosses the river in the lower-left quadrant. The overall scene is a top-down view of a city's infrastructure.

# SITE PLAN

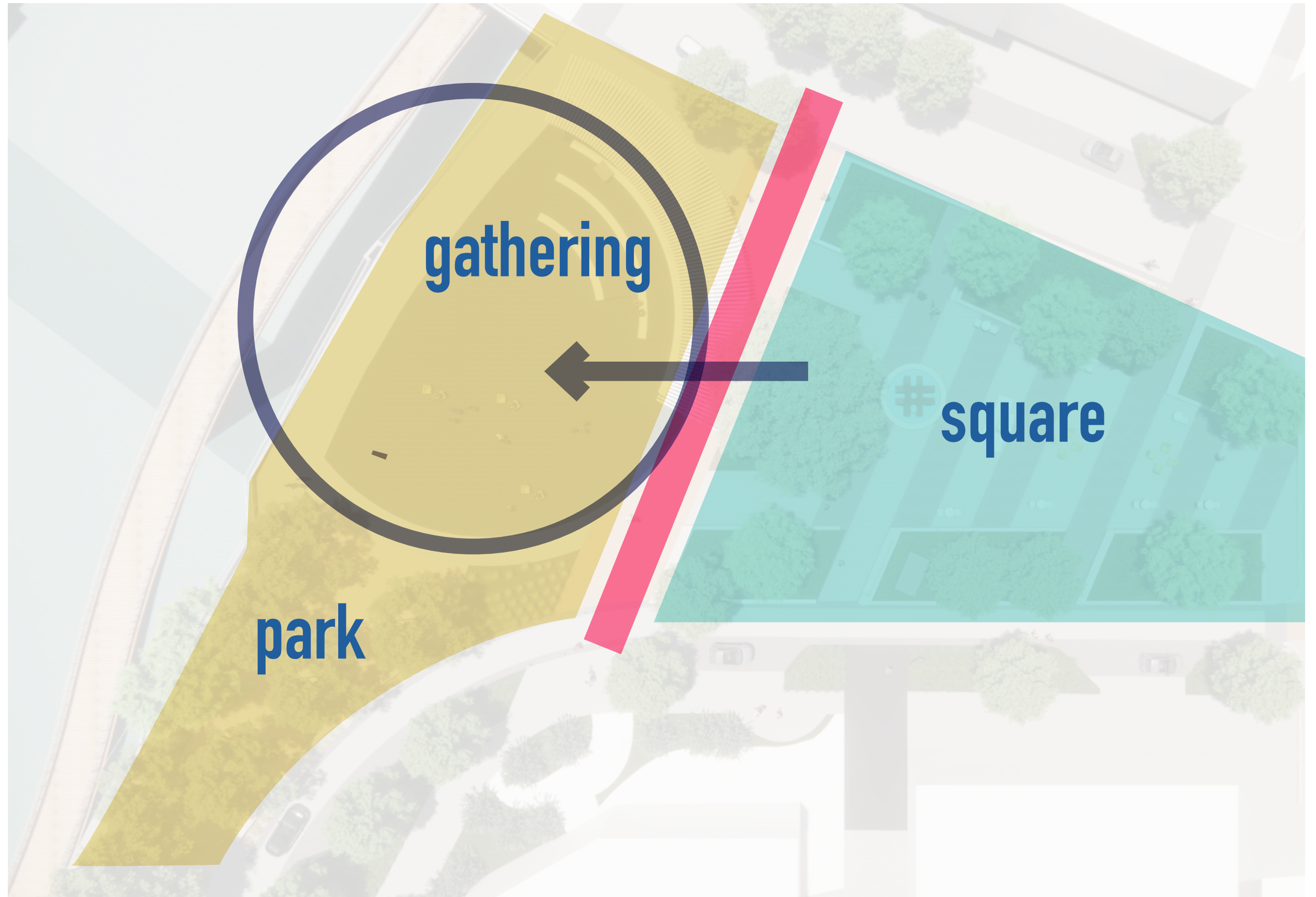
# CONCEPT DESIGN

Water Street disrupts layout and divides the large gathering space in two.



# CONCEPT- SHIFT

Shifting the circular gathering space allows for the two distinct spaces to be created and enhanced function and flexibility.





# HISTORIC-STATUS UNDERSTANDING

- Period Of Significance : Designed Historic Landscape + Commerce 1855-1945
- Bridge Square is inventoried as a contributing resource for the Northfield Commercial Historic District
  - Two contributing sites: Bridge Square and Riverside Park
  - One contributing structure: Civil War Monument
- Character defining features could be:
  - Circulation system
  - Spatial Relationships and orientation (asymmetrical triangular perimeter)

# HISTORIC-STATUS UNDERSTANDING



1938



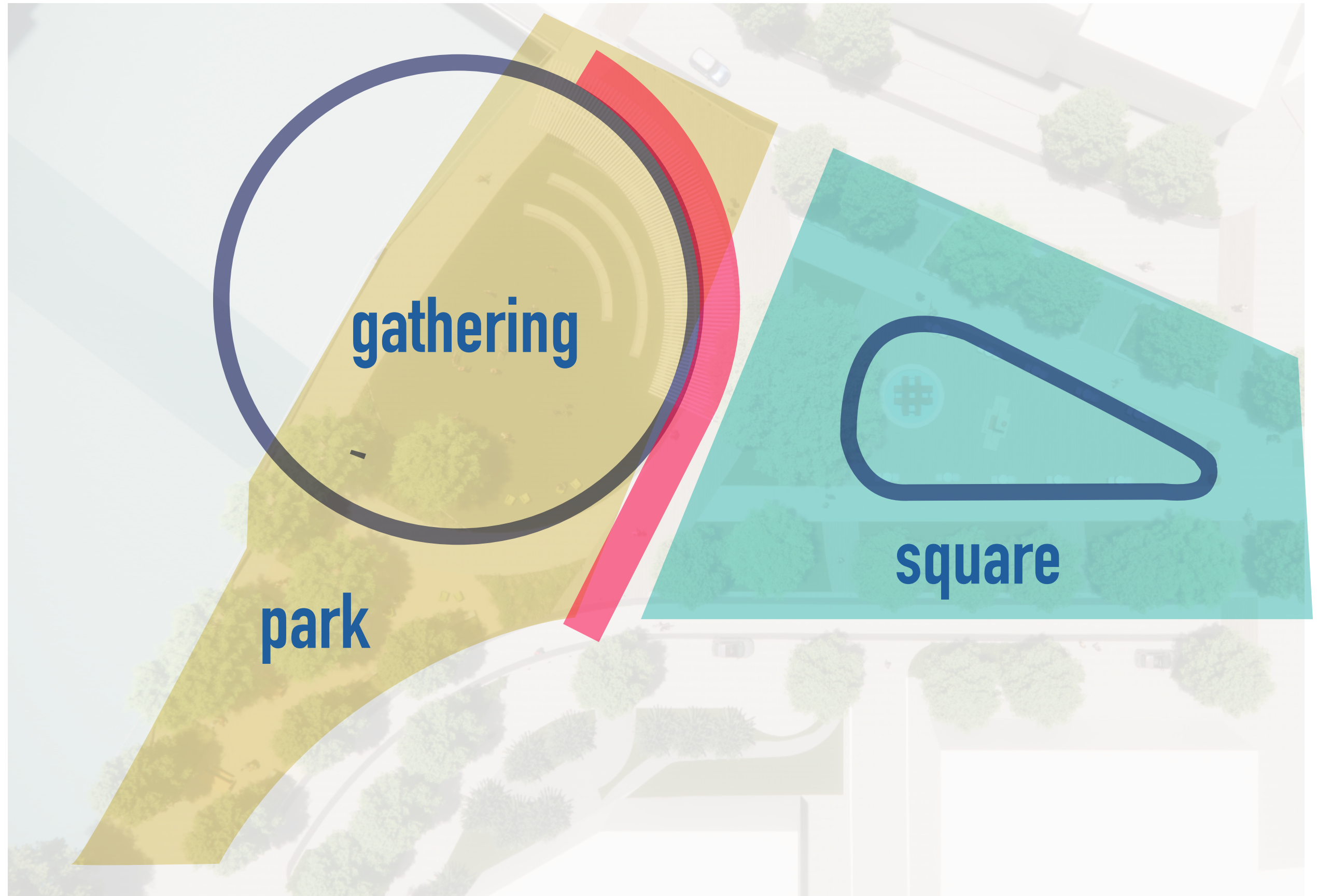
1950



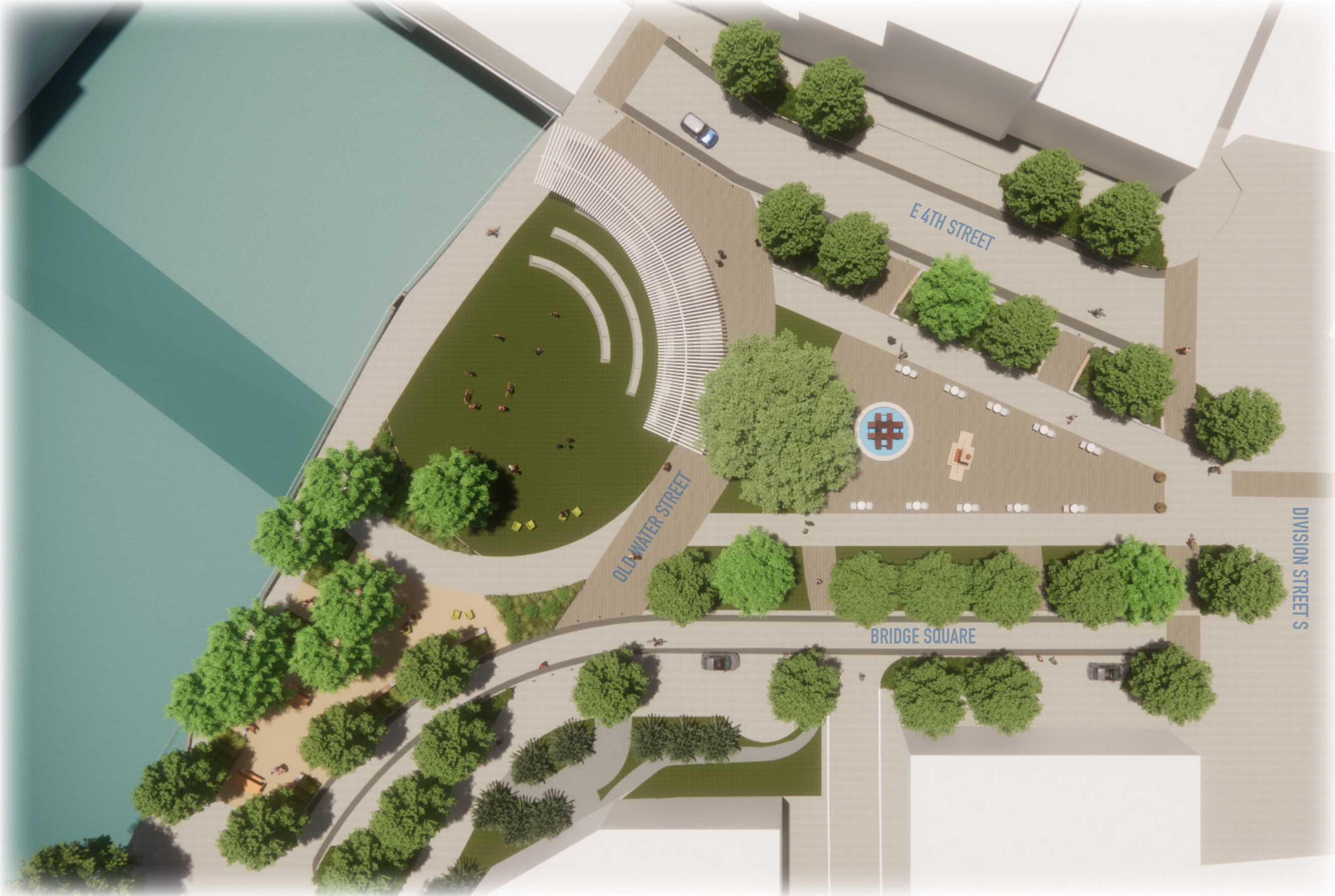
*Carleton Digital Collections, early/mid 1940's*

# CONCEPT- SWEEP

Further integrate Water Street and the historic triangle into the design of the space.



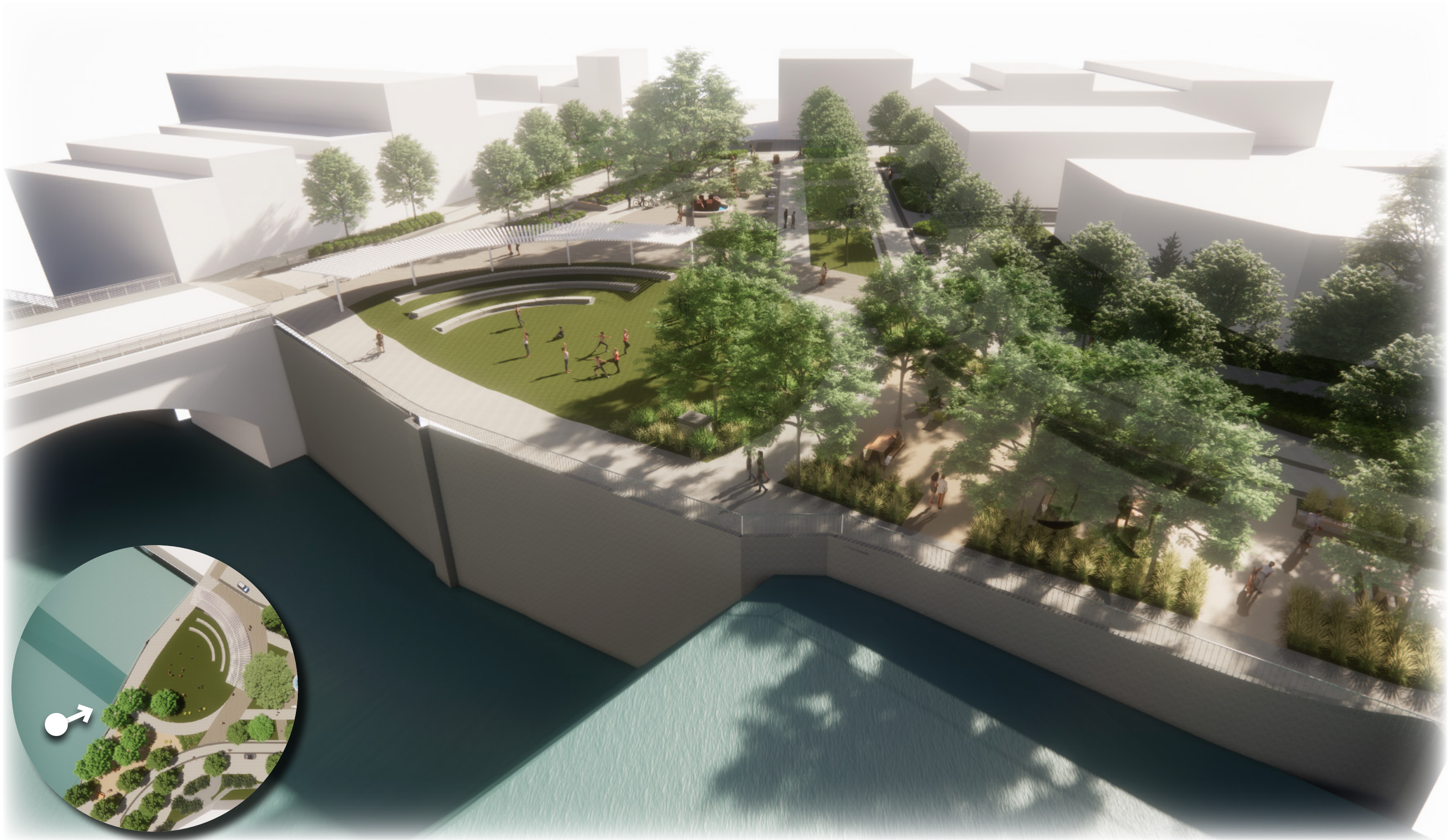
# SITE PLAN



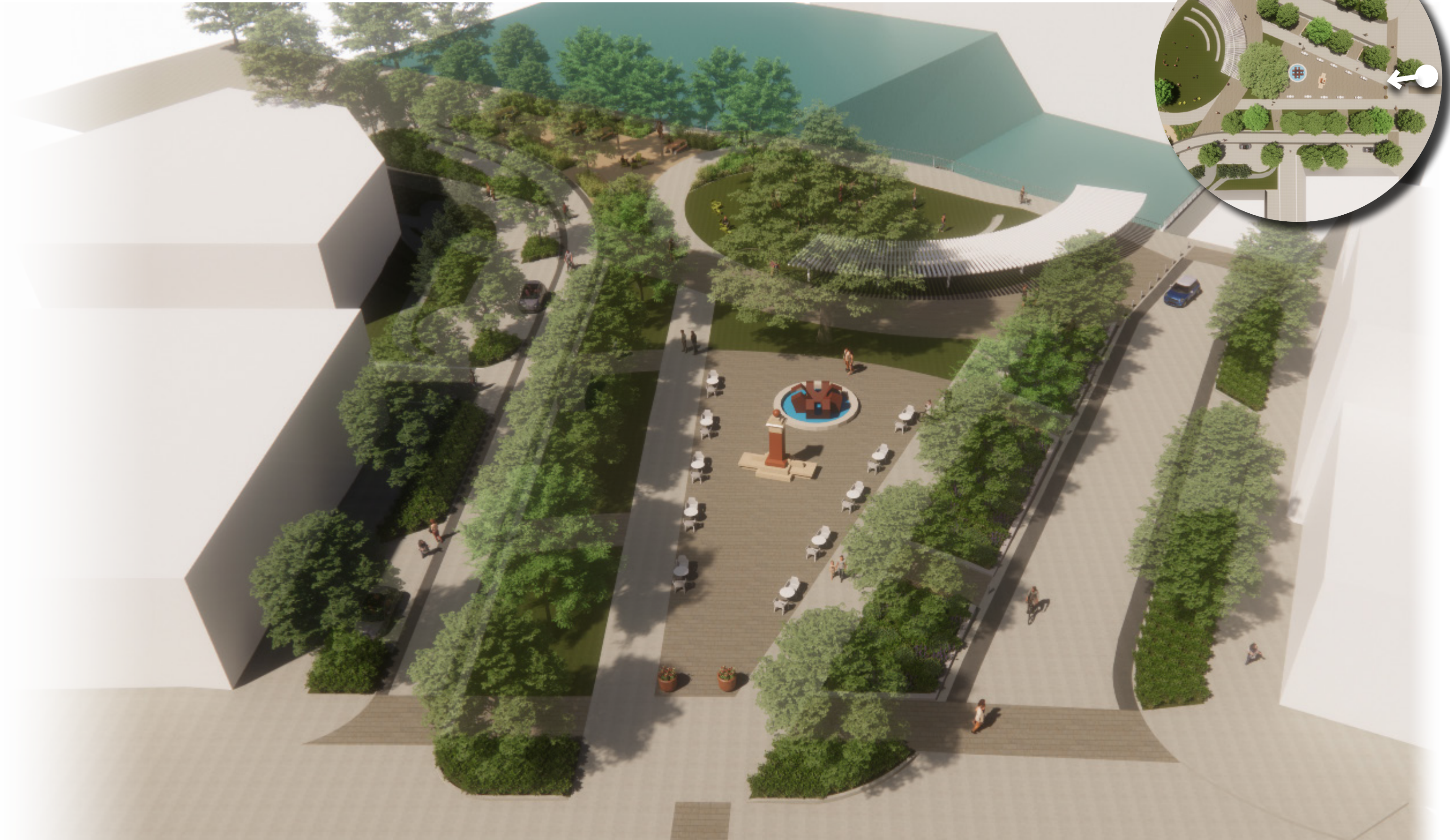
# AERIAL- EXISTING PHOTO



# AERIAL- PROPOSED



# SQUARE- PROPOSED

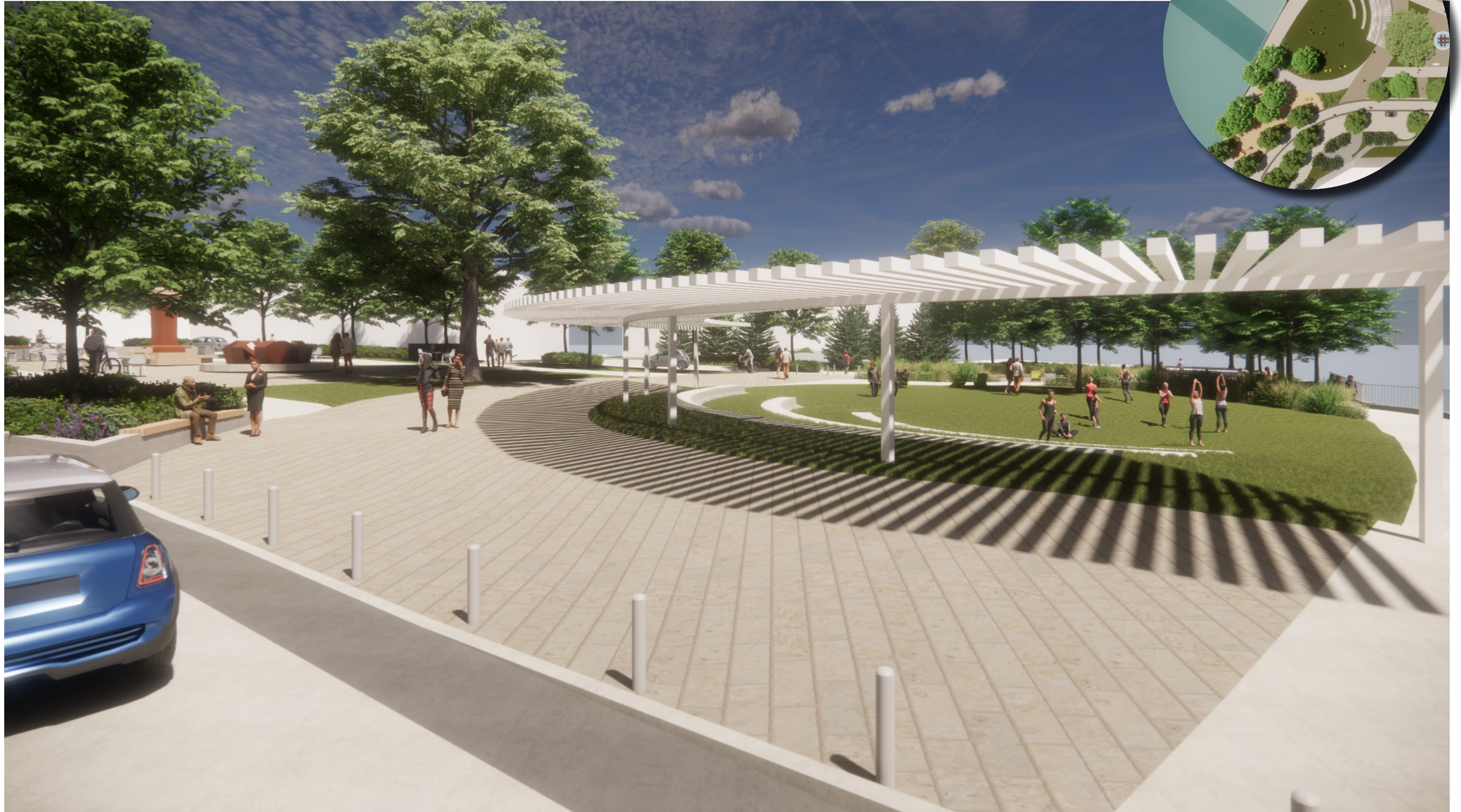




# PARK ENTRY- EXISTING PHOTO



# PARK ENTRY- PROPOSED



# VIEW TO RIVER- EXISTING PHOTO



# VIEW TO RIVER- PROPOSED



# RIVER TERRACE- EXISTING PHOTO



# RIVER TERRACE- PROPOSED



# SOUTH ENTRY / LIVING STREET- EXISTING PHOTO



# SOUTH ENTRY / LIVING STREET - PROPOSED

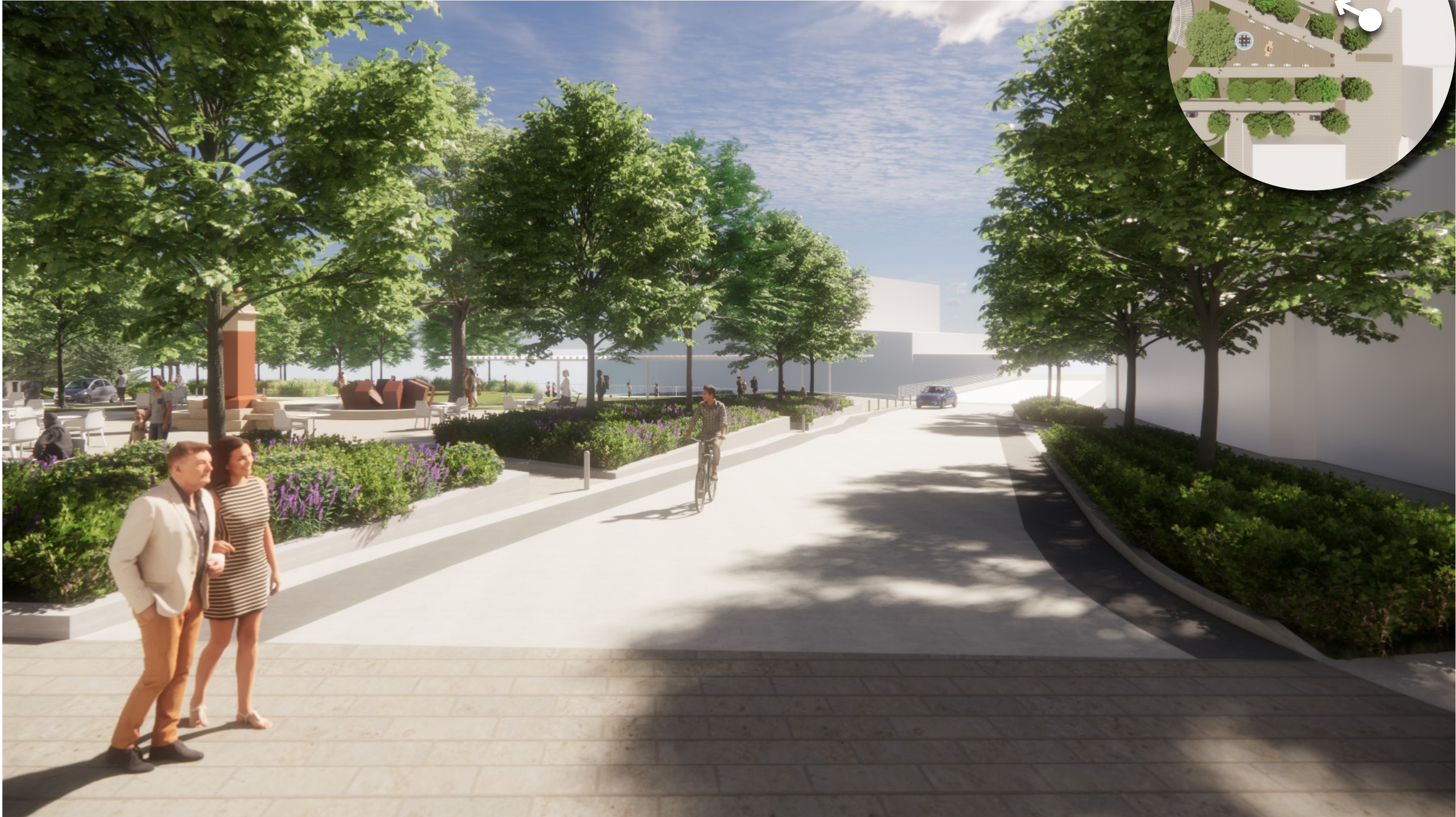




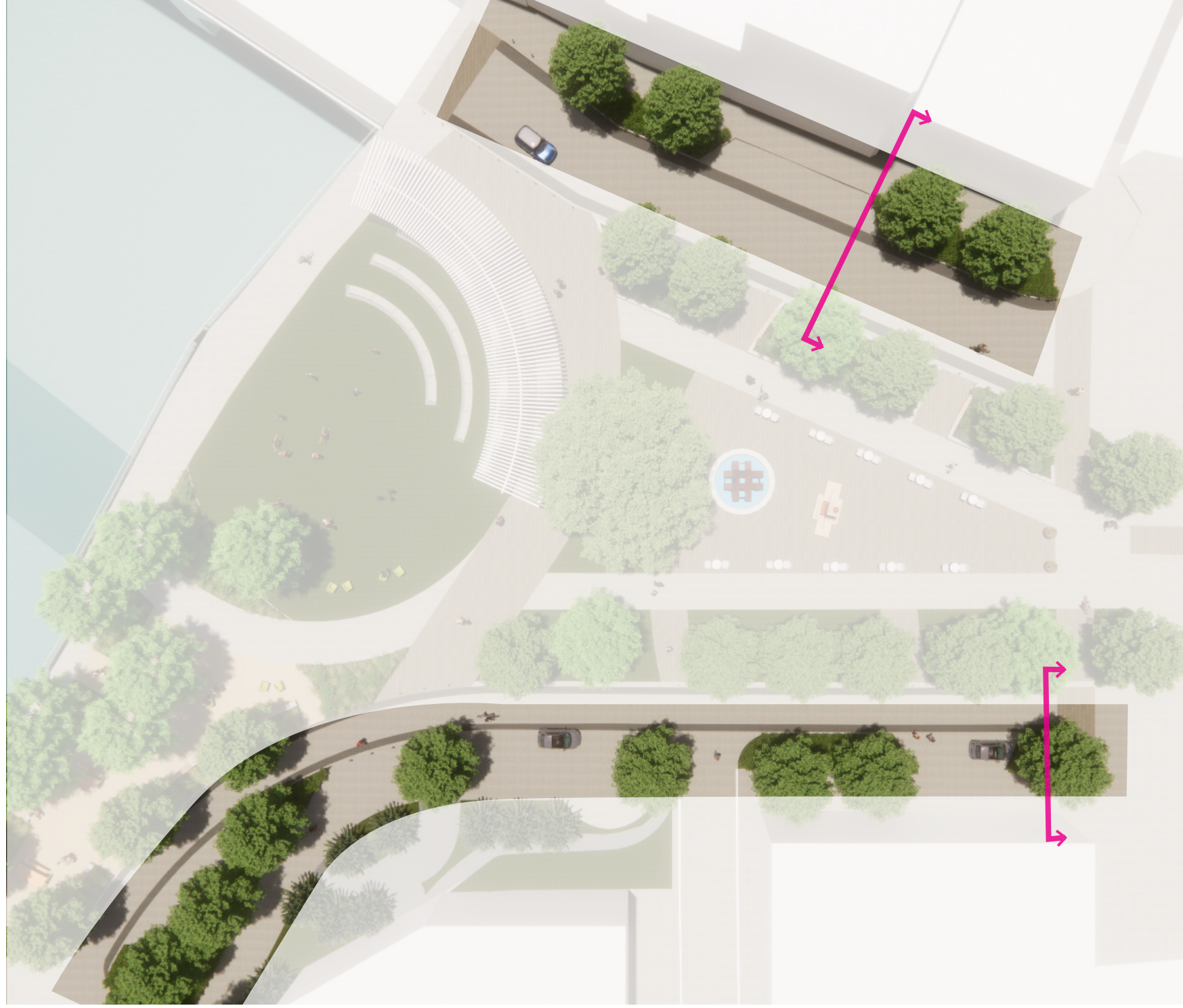
# LIVING STREET- EXISTING PHOTO



# LIVING STREET- PROPOSED



# LIVING STREETS | STORMWATER MANAGEMENT



stormwater trench



enhanced moments

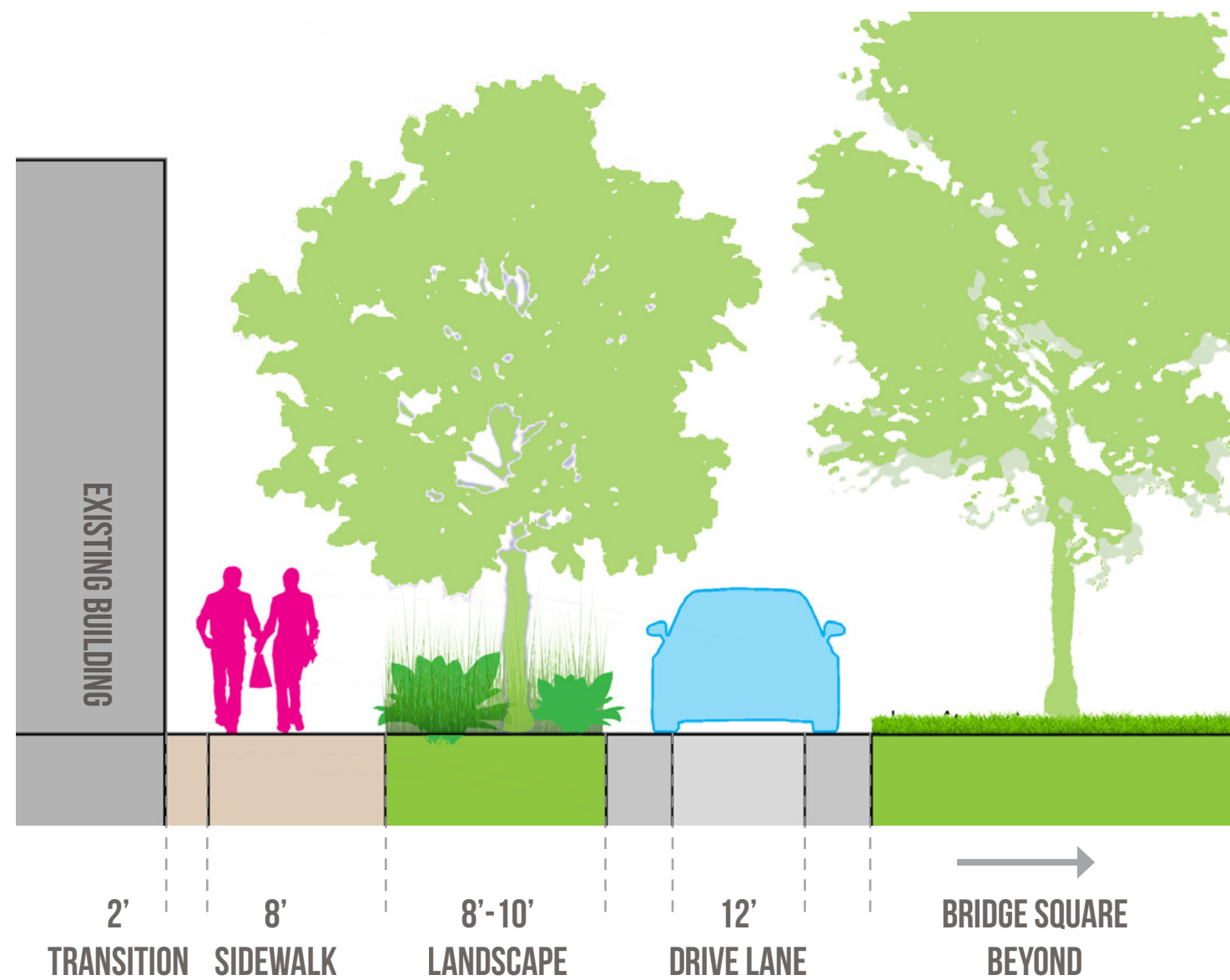


paving extending

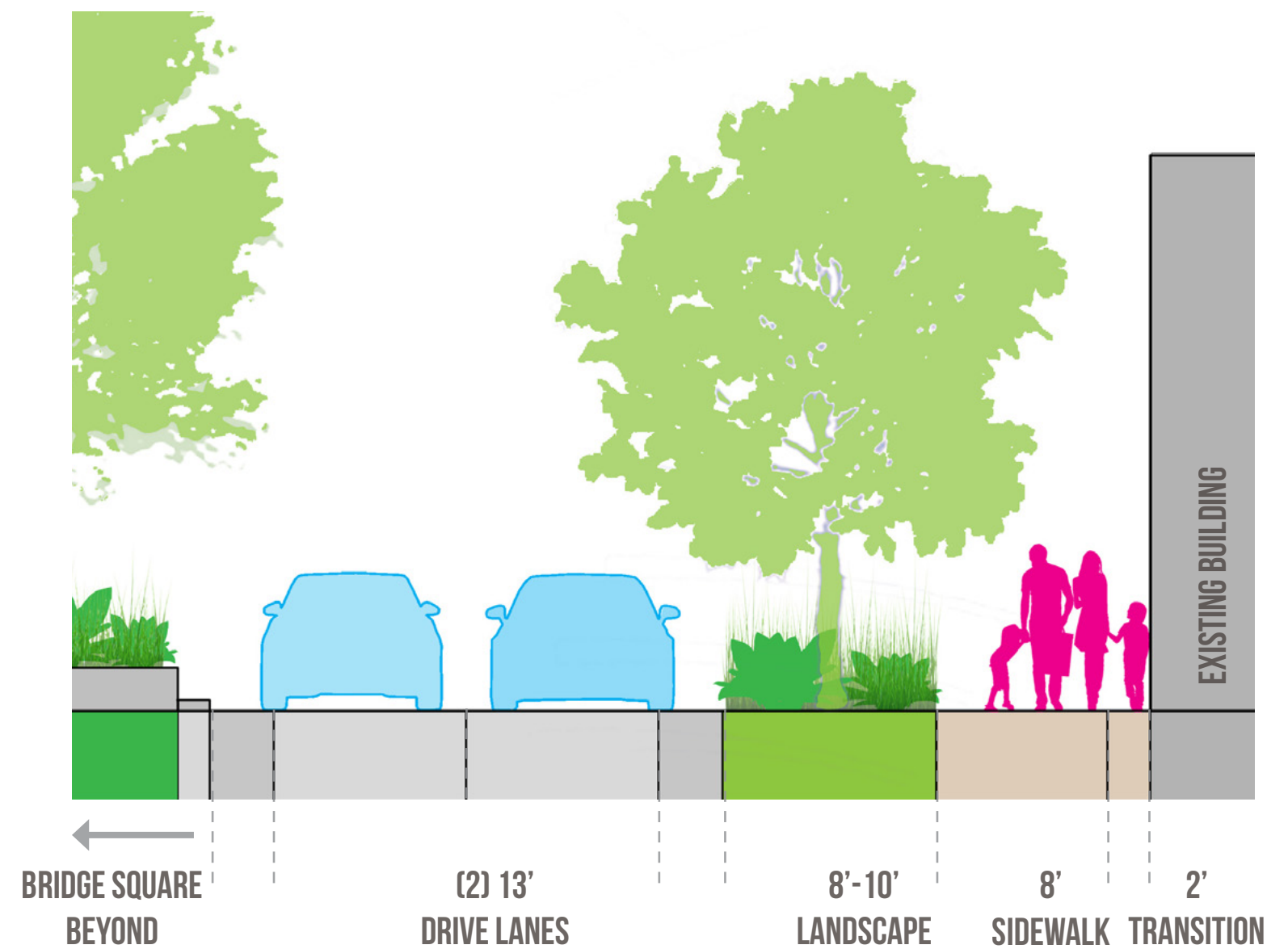


# LIVING STREETS | SECTIONS

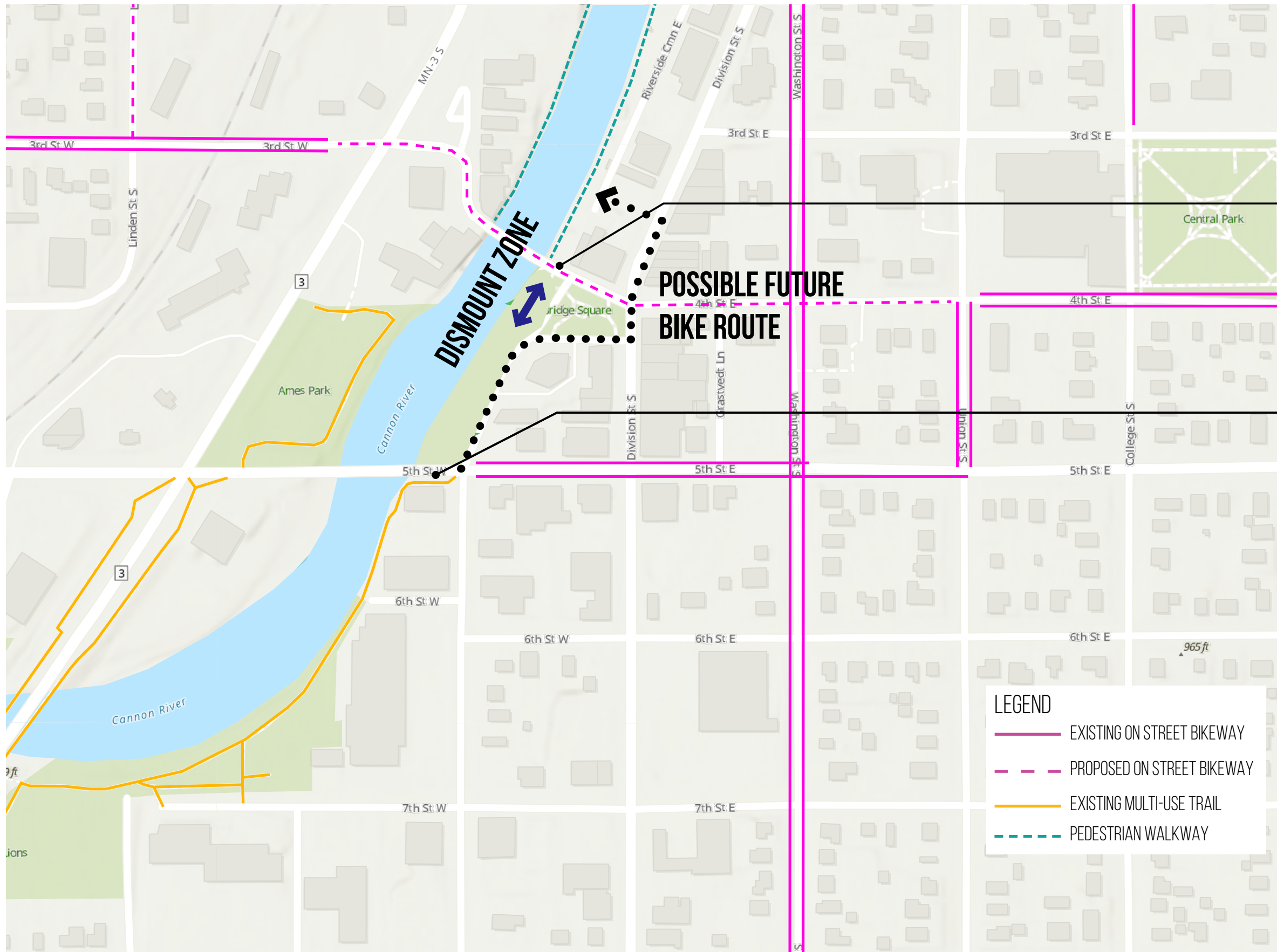
BRIDGE SQUARE STREET  
ONE-WAY TRAFFIC



4TH STREET  
TWO-WAY TRAFFIC



# EXISTING + PROPOSED BICYCLE NETWORK



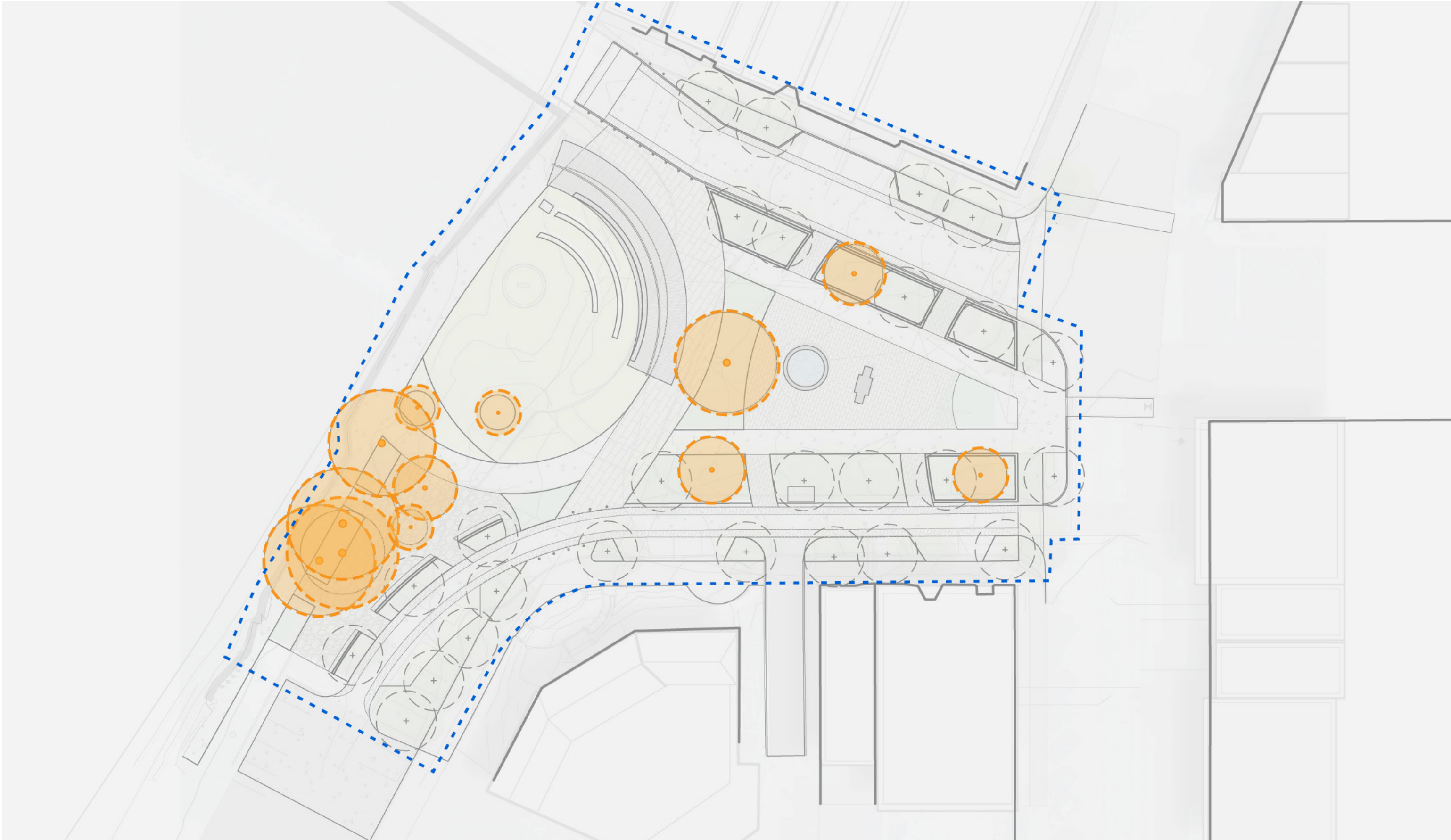
STAIRWAY



MULTI-USE TRAILS  
(9' WIDTH)



# TREE PROTECTION



# PROGRAMMING



# VINTAGE BAND



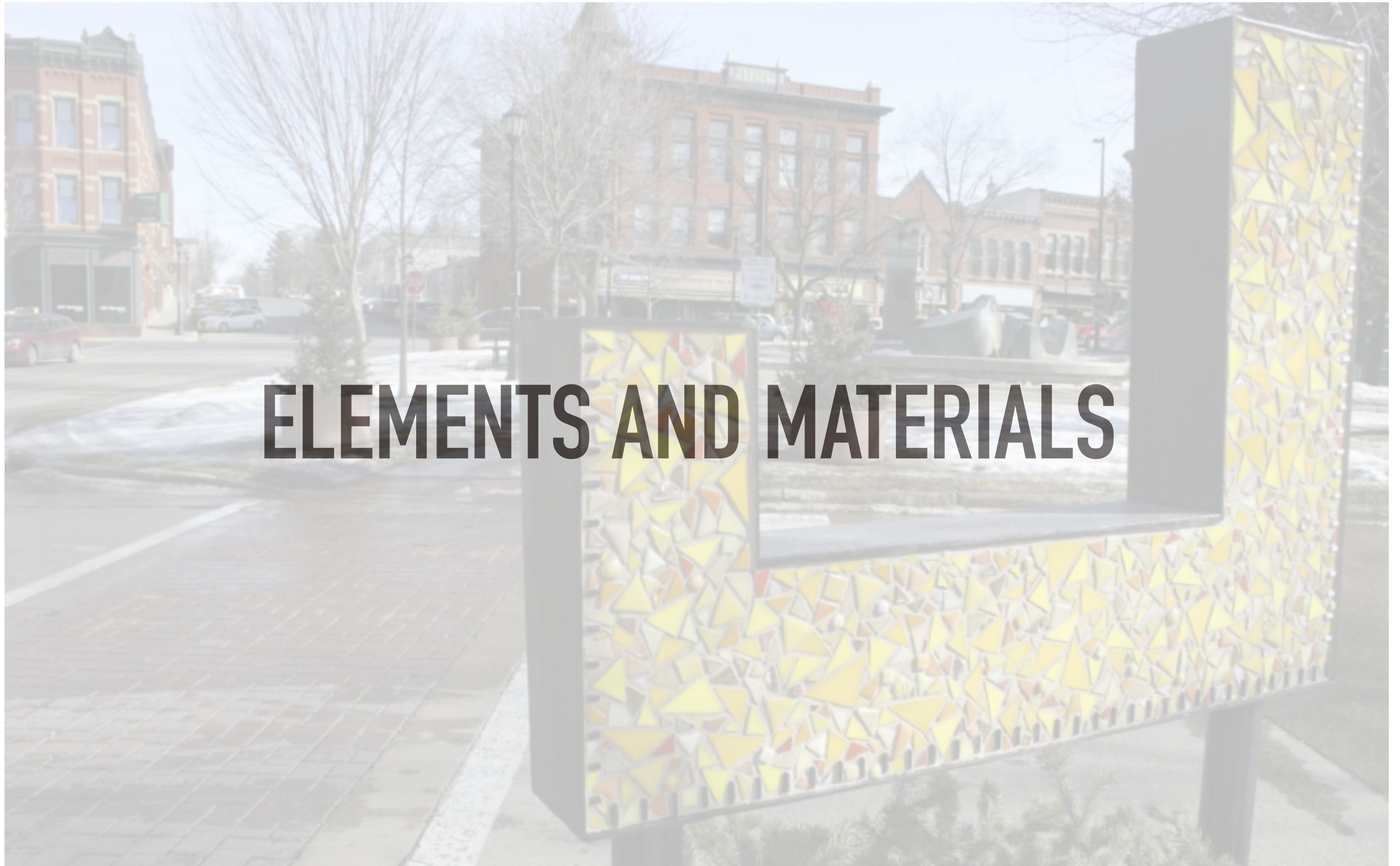


# RIVERWALK MARKET 76 STALLS





# ELEMENTS AND MATERIALS



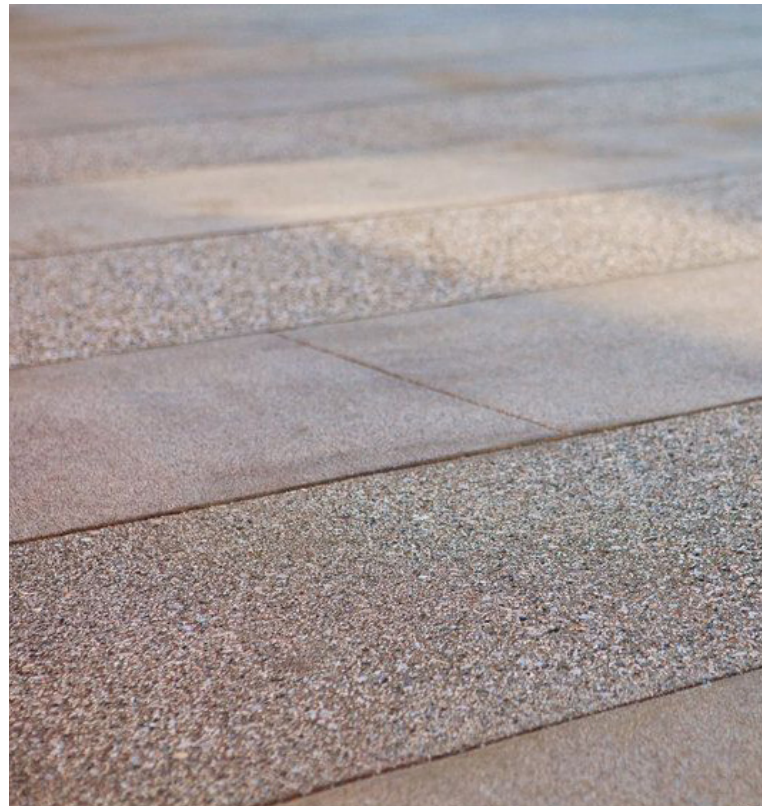
# EXISTING MATERIALS



# EXISTING CONDITIONS



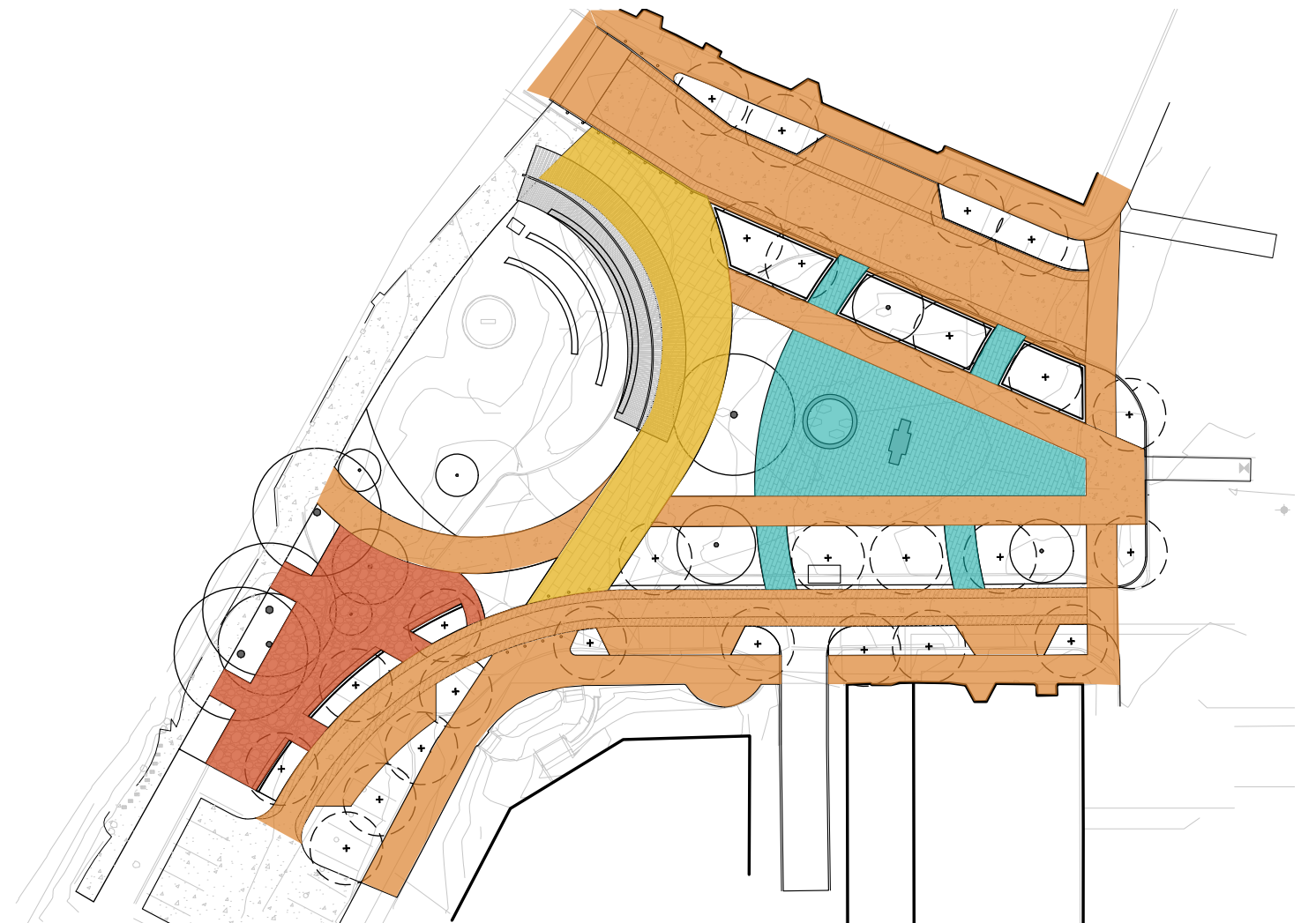
# HARDSCAPE PROPOSED



topcast concrete - saw-cut edges



crushed stone



pavers for historic water st



pavers in square

# STRUCTURAL ELEMENTS SEATING

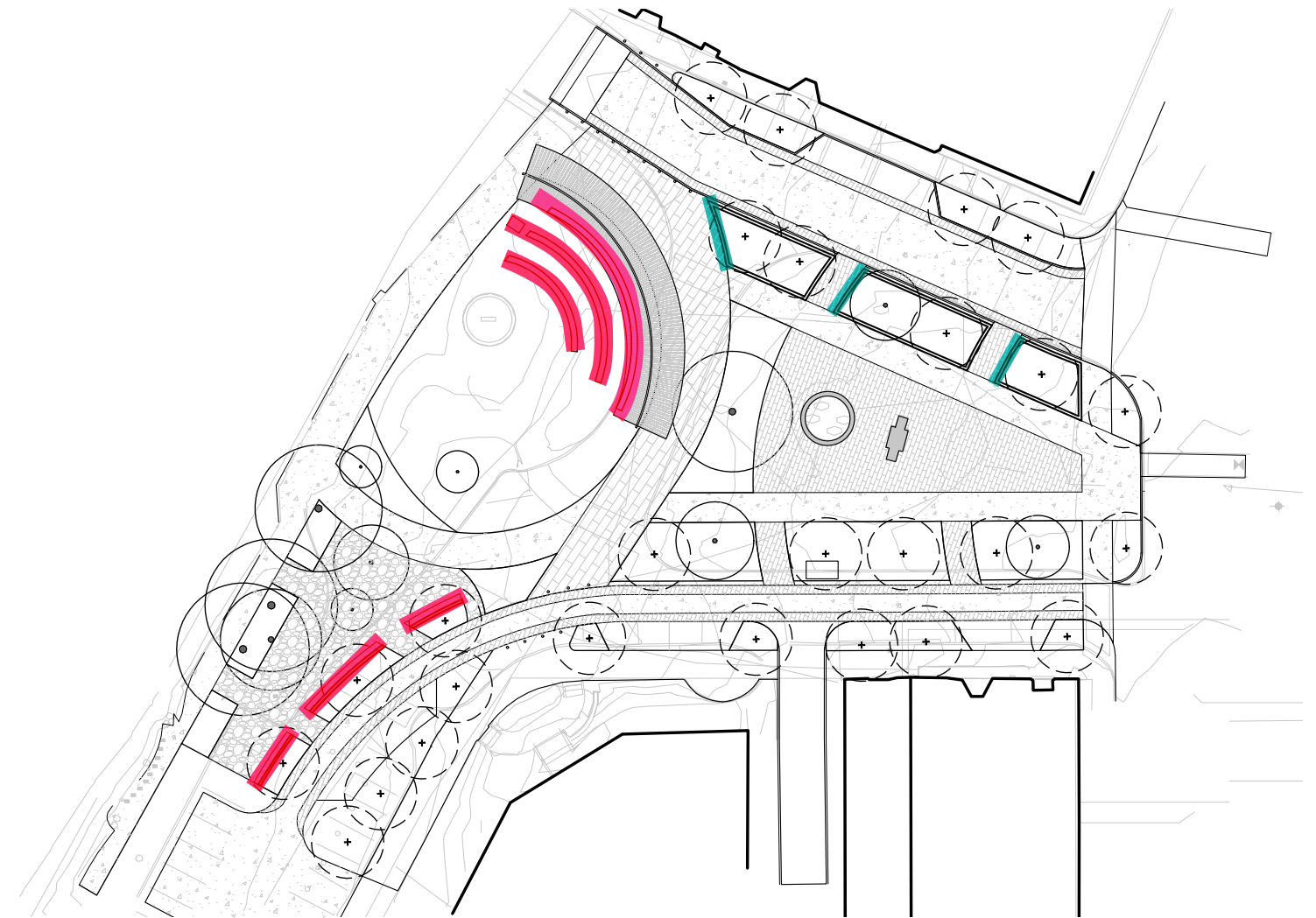


precast - buff



maintenance edge

wall seating

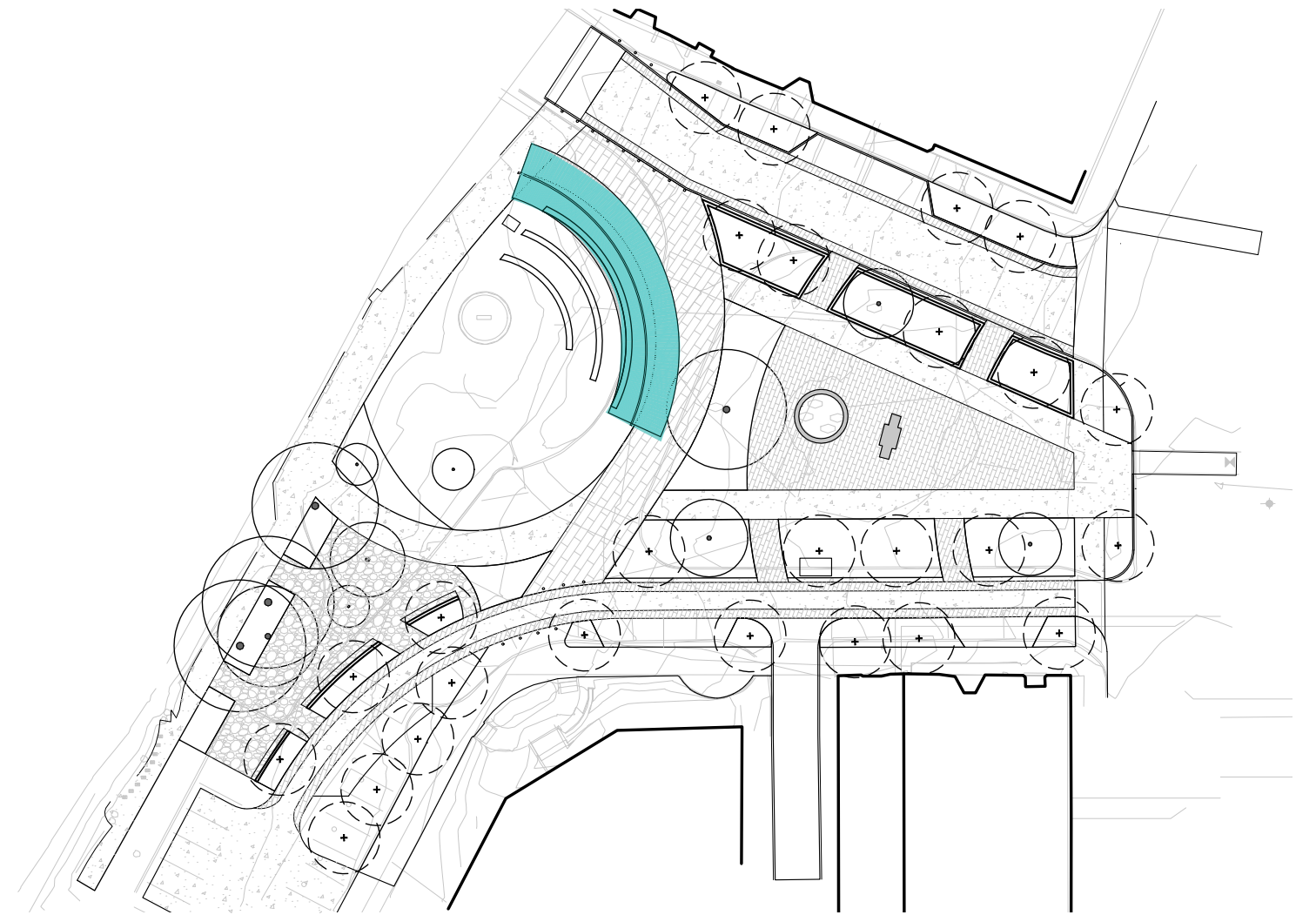


seat walls

# STRUCTURAL ELEMENTS SHADE



aluminum slats



timber slat



solid overhead



# LANDSCAPE ELEMENTS TREES



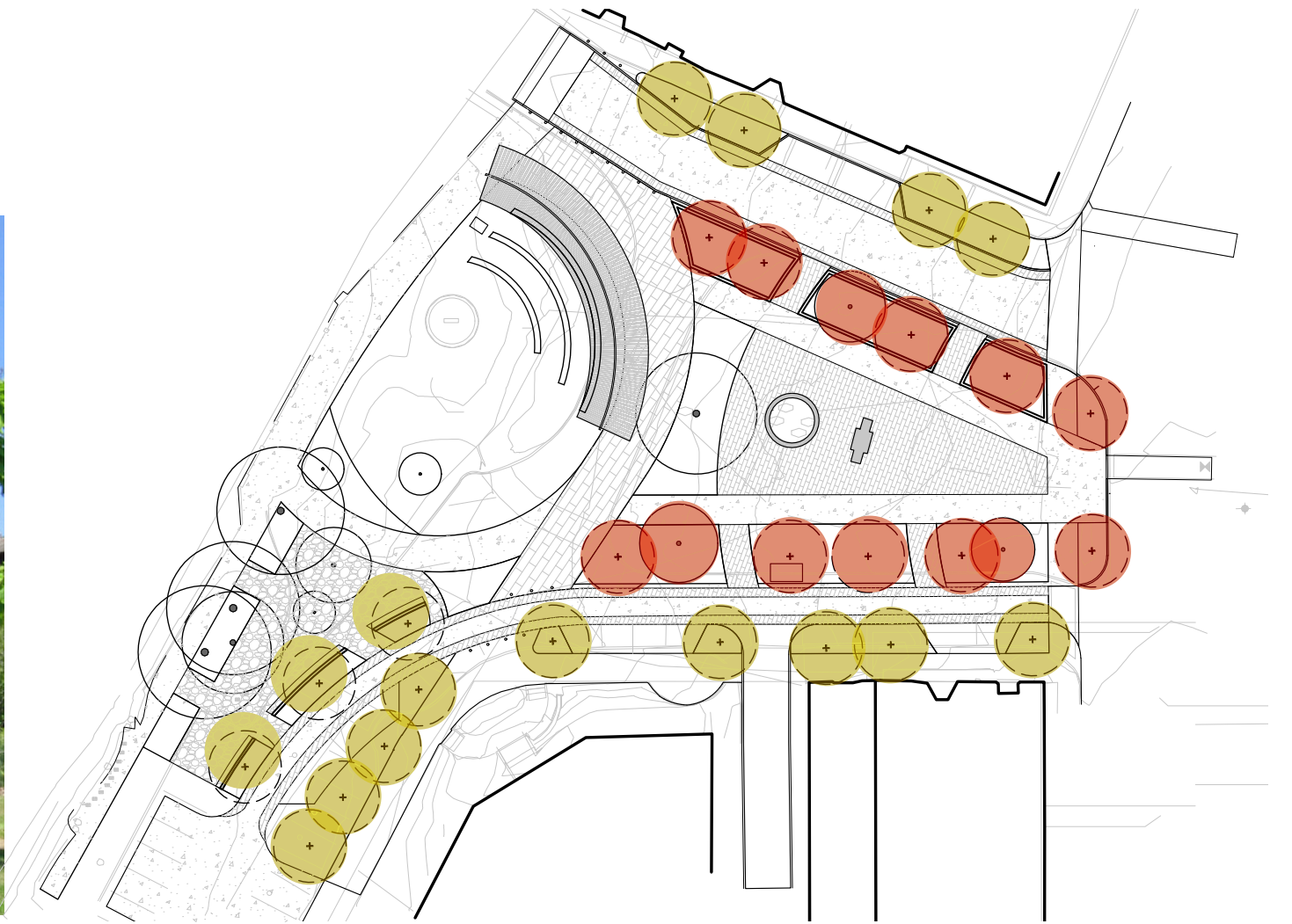
Aspen



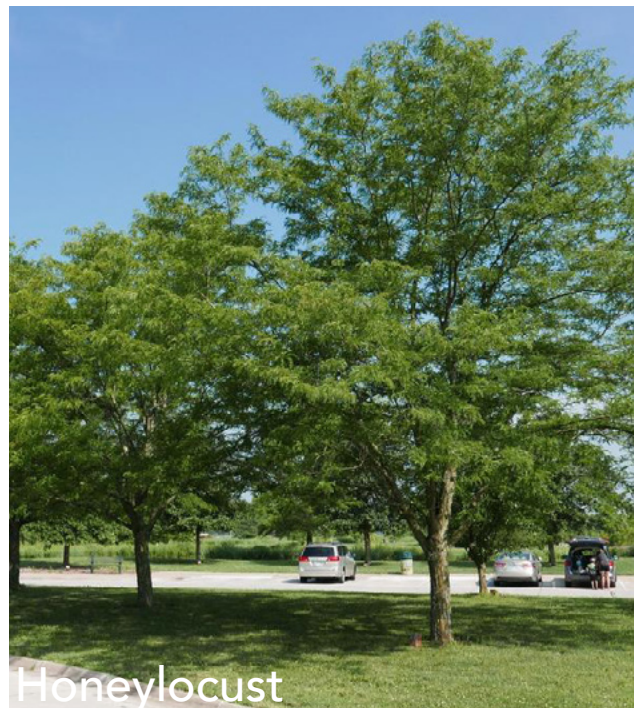
Serviceberry



Catalpa



square trees



Honeylocust



Littleleaf Linden



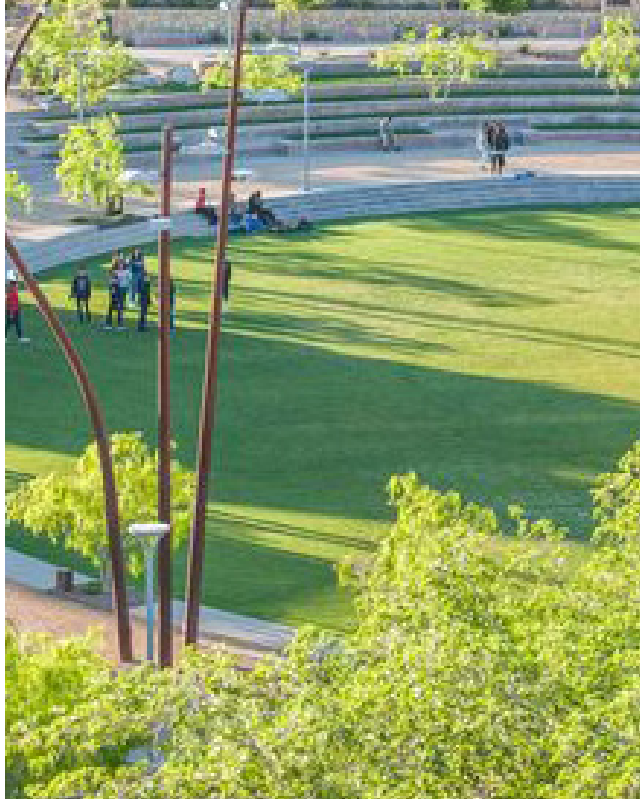
Kentucky Coffeetree



Hophornbeam

street trees

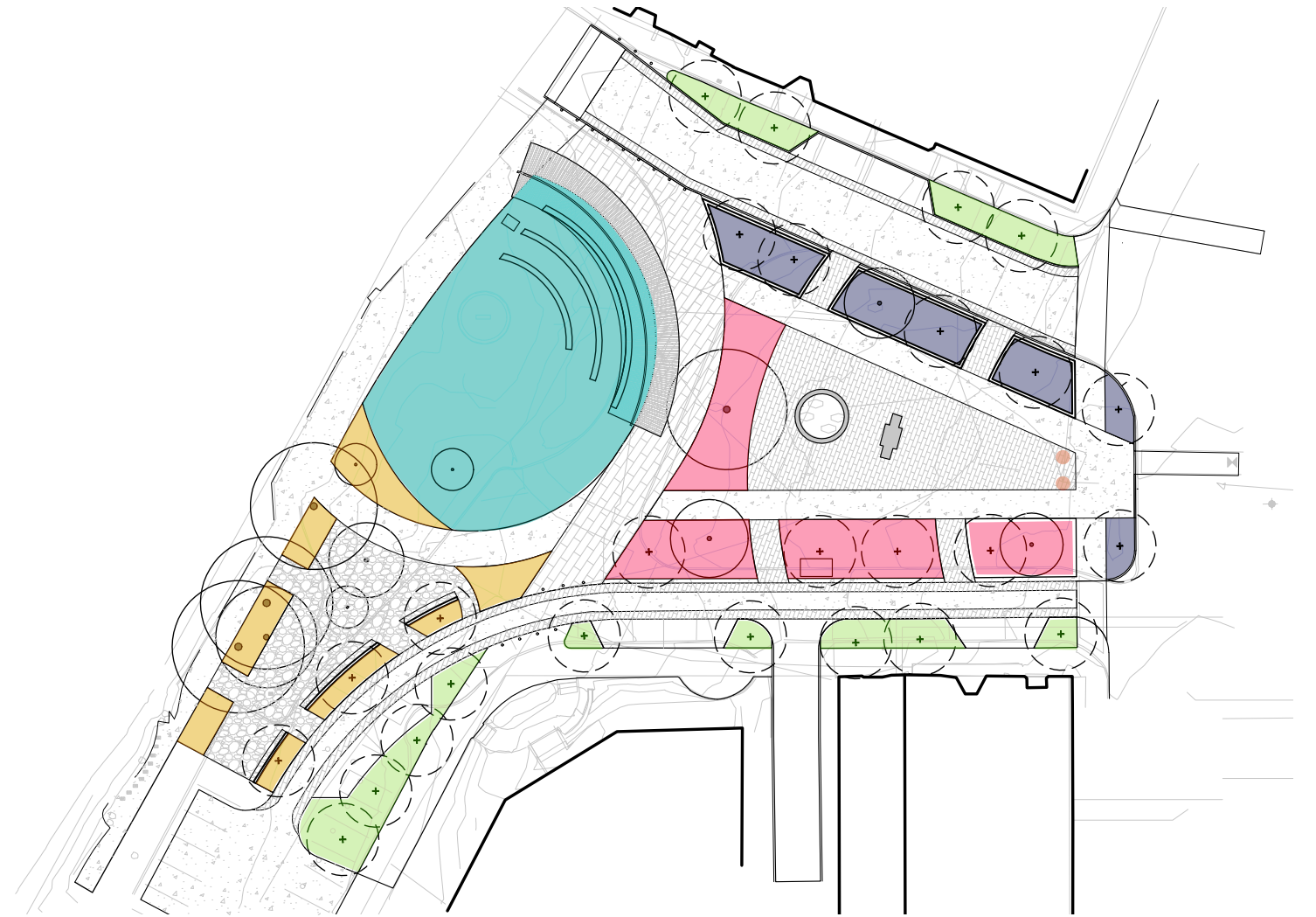
# LANDSCAPE ELEMENTS PLANTING



full sun grass



shade perennial



landscape bed



shade tolerant grass



annual planter option

