

MINNESOTA HISTORY / ARCHITECTURE INVENTORY FORM
NORTHFIELD COMMERCIAL HISTORIC DISTRICT
Rice County, Minnesota

| PROPERTY LOCATION | |
|--|--|
| Property Name: Northfield Public Library Other: Northfield Carnegie Library | Inventory No.: RC-NFC- 296 |
| Address: 210 Washington Street, Northfield, MN (105 E. 3rd Street) | PIN: 2231350038 |
| QTR/QTR/T/R/S: SW SW Section 31 T112N R19W | Plat Name: Original Town Block: 16 Lot: 2 |
| USGS Quad: Northfield, Minnesota | |
| UTM Z 15 487351E, 4922725N NAD 83 | |

| PROPERTY INFORMATION | |
|---|--|
| Construction Date: 1910, 1985, 2016 | Style: Georgian Revival (altered) |
| Historic Use: public library | Current Use: public library |
| Property Type: institutional/library | Historic Context: "Commerce, 1856-1945" |
| Architect/Builder Original: Bell, Tyrie, Chapman, Minneapolis 1985: SMSQE, Northfield 2016 addition, Roehr Schmitt Architecture, Minneapolis | Survey Name: Northfield Historic District Survey Revision Project, 2016 |
| Previous NRHP Status: Contributing to Northfield Commercial Historic District | NRHP Recommendation: Not contributing to Northfield Commercial Historic District |
| Form Prepared by: Landscape Research LLC | Survey Date: 3/2016 |



2016, looking north west at E. 3rd Street entry



2016, looking northwest at new addition

Description

The Northfield Public Library occupies an irregularly-shaped, sloping parcel bounded by Washington Street on the east, E. 3rd Street on the south, and Division Street at the west. A small office building occupies the parcel to the north. The original red brick, two-story building at the core of the current building was a hip-roofed, two-story structure that faced E. 3rd Street. A classical entry with pedimented portico and fanlight was placed between symmetrical bays illuminated with large windows. Rusticated bands of brick placed above the stone sill were part of the original design and remain. The current design, involving a new, flat-roofed addition as well as extensive interior changes and new landscape design completed in 2016, has a glass-walled elevation facing Washington Street that wraps around the E. 3rd Street elevation. Much of the historic 3rd Street elevation including the historic entry has been conserved, although the historic landscape setting has been significantly altered.

History

The Lyceum Society founded in 1856 created a reading room and circulating library in a schoolhouse at E. 3rd and Union Streets, and next in the Lyceum Building (1857) at 109 E. 4th Street. (RC-NFC-291).

MINNESOTA HISTORY / ARCHITECTURE INVENTORY FORM
NORTHFIELD COMMERCIAL HISTORIC DISTRICT
Rice County, Minnesota

The library next moved to the YMCA rooms on Bridge Square, and in 1885 to the new YMCA building (RC-NFC-267). In 1908 Andrew Carnegie donated \$10,000 to build a new library. Donations and tax funds also supported construction and furnishings. The building was oriented to E.3rd Street, and reached by a steep flight of concrete steps set between brick piers. The entry was shifted to Washington Street in 1985, as part of an 8,000-square-foot addition by Steve Edwins of the Northfield firm SMSQE, which also transformed the landscape around the building. RoehrSchmitt Architecture, LLC of Minneapolis designed the 2016 addition.

Significance and Evaluation

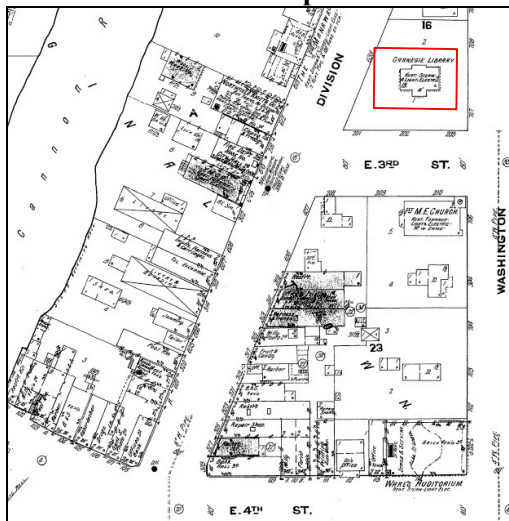
This building is primarily associated with the second period of Northfield's community development, from ca. 1900 to 1945, when the city's downtown achieved much of its present form. The building is associated with the Northfield historic context, "Public Institutions and Improvements, 1857-1945 (Northfield Preservation Plan, 1992).

This property was listed on the NRHP in 1979 as contributing to the Northfield Commercial Historic District. The remodelings have had a significant impact on the historic building and the Washington Street elevation retains poor integrity, although conservation of the E. 3rd Street elevation results in fair to good integrity when seen from Division Street and the surrounding historic district. Overall, however, the building does not retain enough integrity to remain contributing to the district.

References

Edwins, Steve, ed. *Northfield Downtown Guidebook*. Northfield Heritage Preservation Comm., 1982.
"Northfield Historic District," National Register of Historic Places Nomination, 1979.
Northfield Historical Society. Photograph and research files. Northfield, Minnesota.
Northfield Public Library. Photograph and research files. Northfield, Minnesota.
Zellie, Carole. "Northfield Heritage Preservation Plan." Prepared for the Northfield Heritage Preservation Commission, Northfield, Minn. by Landscape Research, 1992.

Sanborn and USGS Map



Sanborn Map and Publishing Co., 1910.



USGS: Northfield 1984