

# NORTHFIELD LIBRARY

## Final Presentation

- 01 Existing Issues
- 02 Proposed Designs

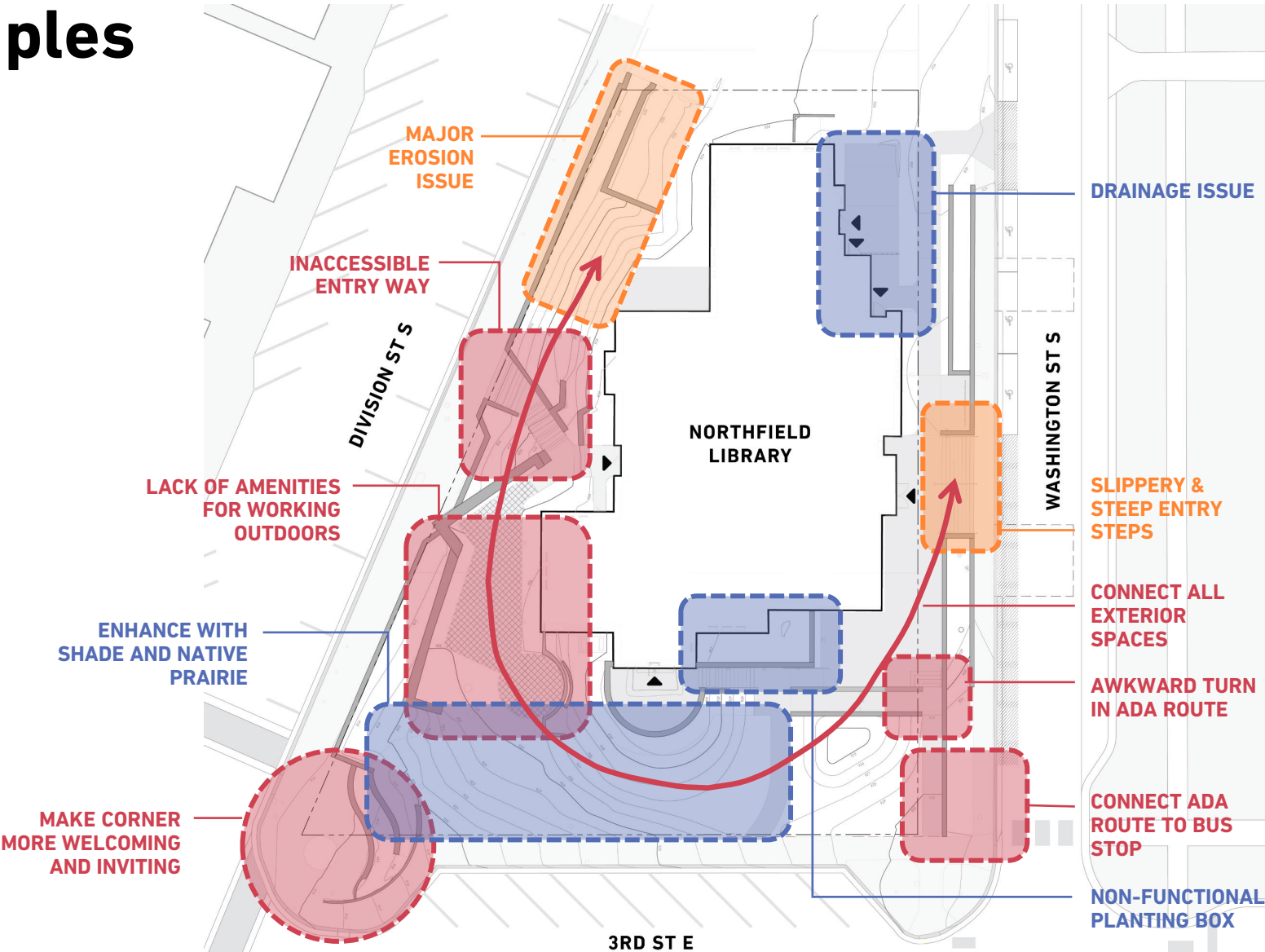
# 01 EXISTING ISSUES

# Guiding Principles



# Site Issues by Principles

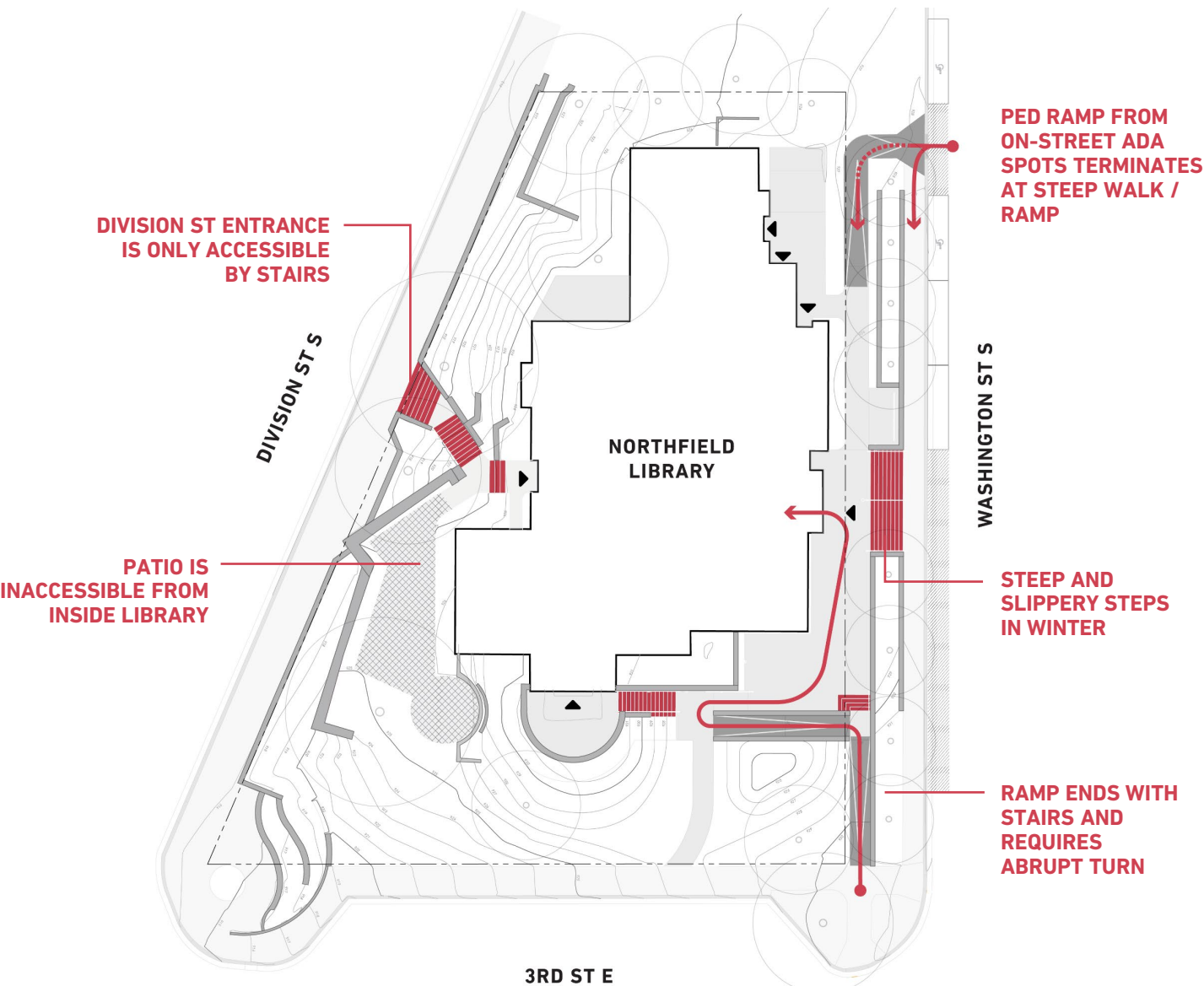
- ACCESSIBILITY
- SUSTAINABILITY
- SAFETY



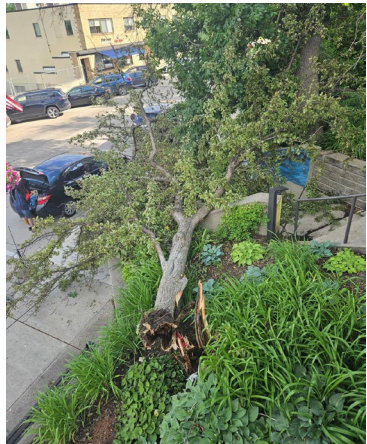
# Accessibility



- KEY**
- Property Line
  - Library Building
  - Entrance
  - Wall
  - Minor Contour
  - Major Contour
  - Ramp
  - Stair
  - ADA-Accessible Route

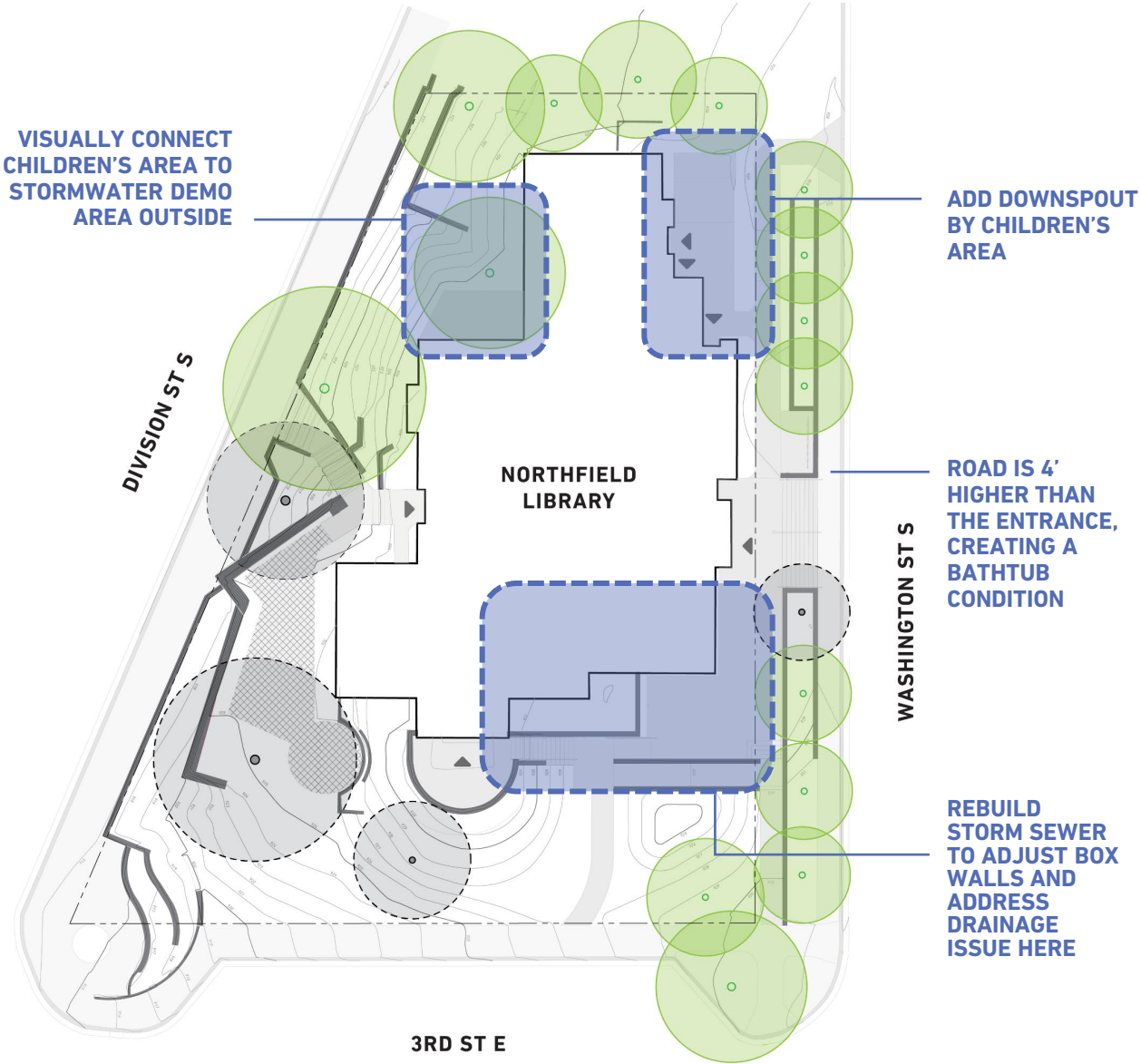


# Sustainability



**KEY**

- Property Line
- Library Building
- Entrance
- Wall
- Minor Contour
- Major Contour
- Areas with Drainage Issues
- 2024-25 Fallen Trees





# Safety



- KEY**
- Property Line
  - Library Building
  - Entrance
  - Wall
  - Minor Contour
  - Major Contour
  - Area with Slopes above 1:3
  - Areas of Erosion Issues
  - Areas with Steep Steps

WALL GOES BELOW BUILDING FOUNDATION AND SHOULD NOT BE TOUCHED

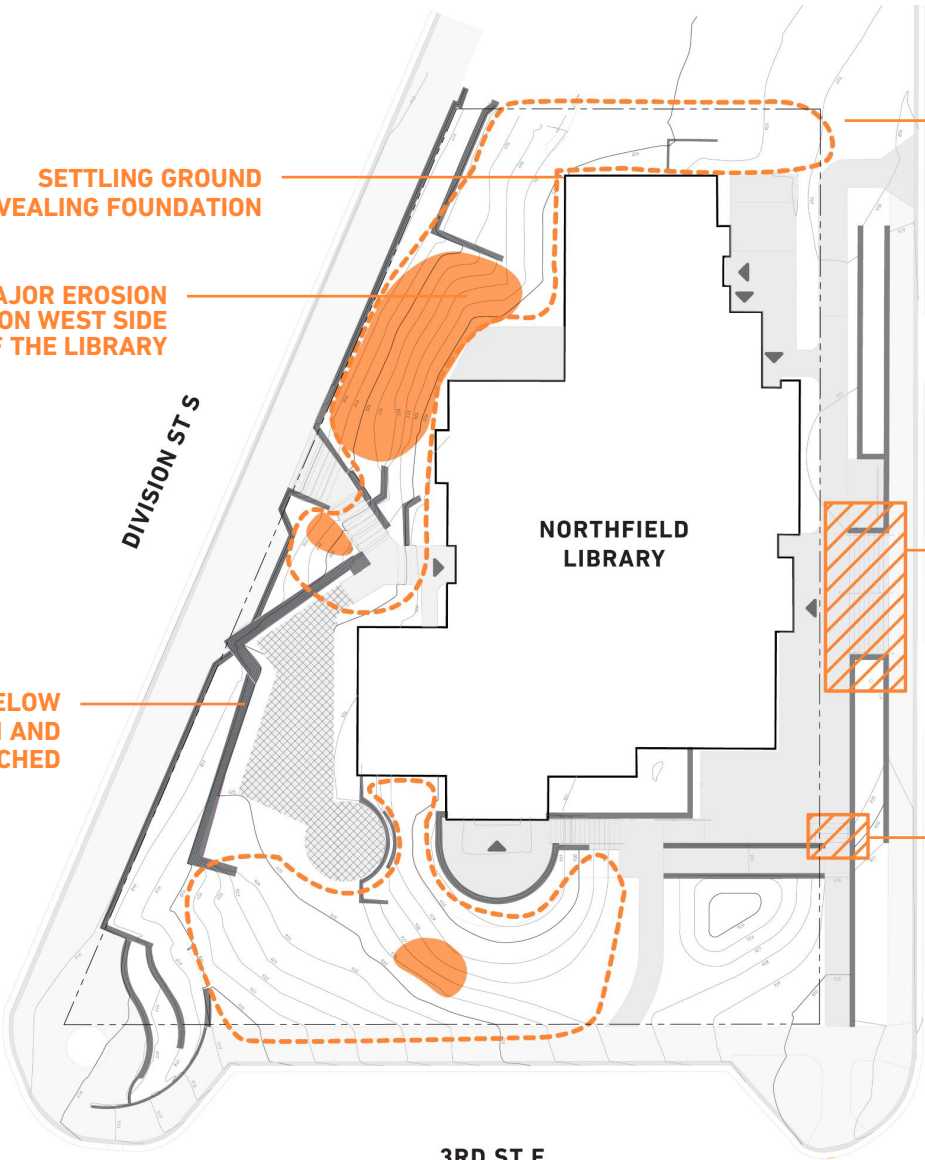
MAJOR EROSION ISSUE ON WEST SIDE OF THE LIBRARY

SETTLING GROUND REVEALING FOUNDATION

ADDRESS UPSTREAM DRAINAGE CAUSING EROSION ON THE NORTH SIDE

SLIPPERY & STEEP ENTRY STEPS

RAMP TERMINATING WITH STAIRS, CREATING POTENTIAL SAFETY HAZARD



# 02 PROPOSED DESIGN



# Preferred Concept

PREVIOUS CONCEPT



OPTION 1



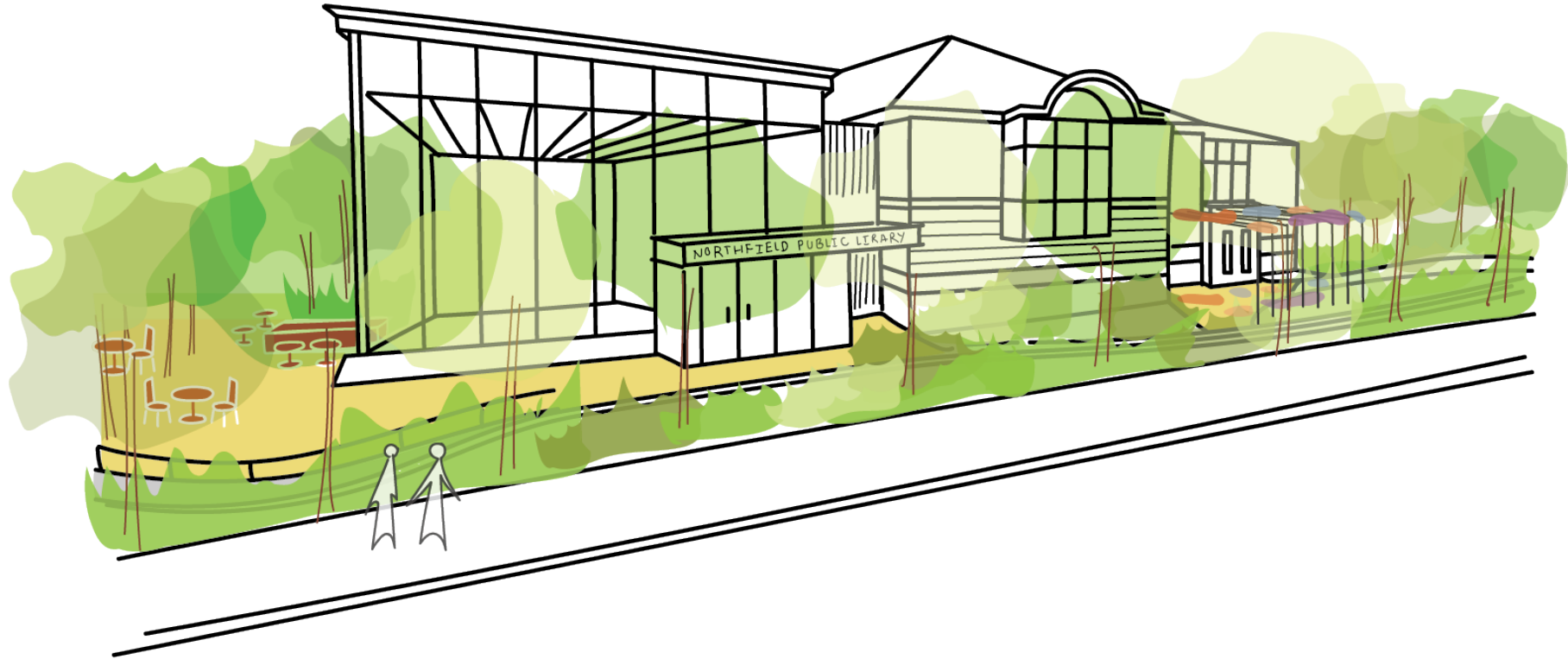
This one is closer to the originals, but can't save the tree

OPTION 2

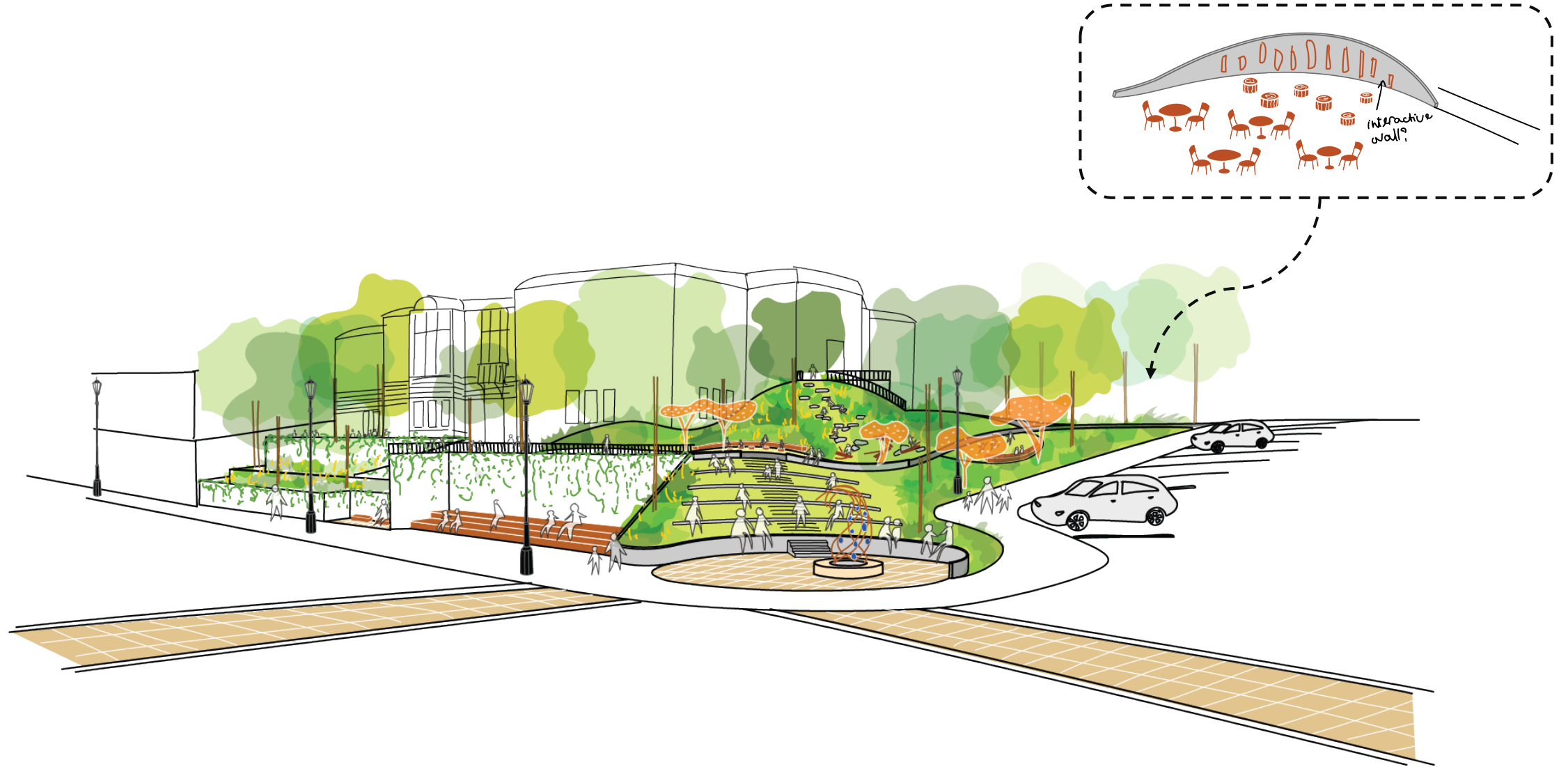


This one saves the tree with a new plaza on the corner, but requires the path access to be further down the sidewalk in order to avoid the tree

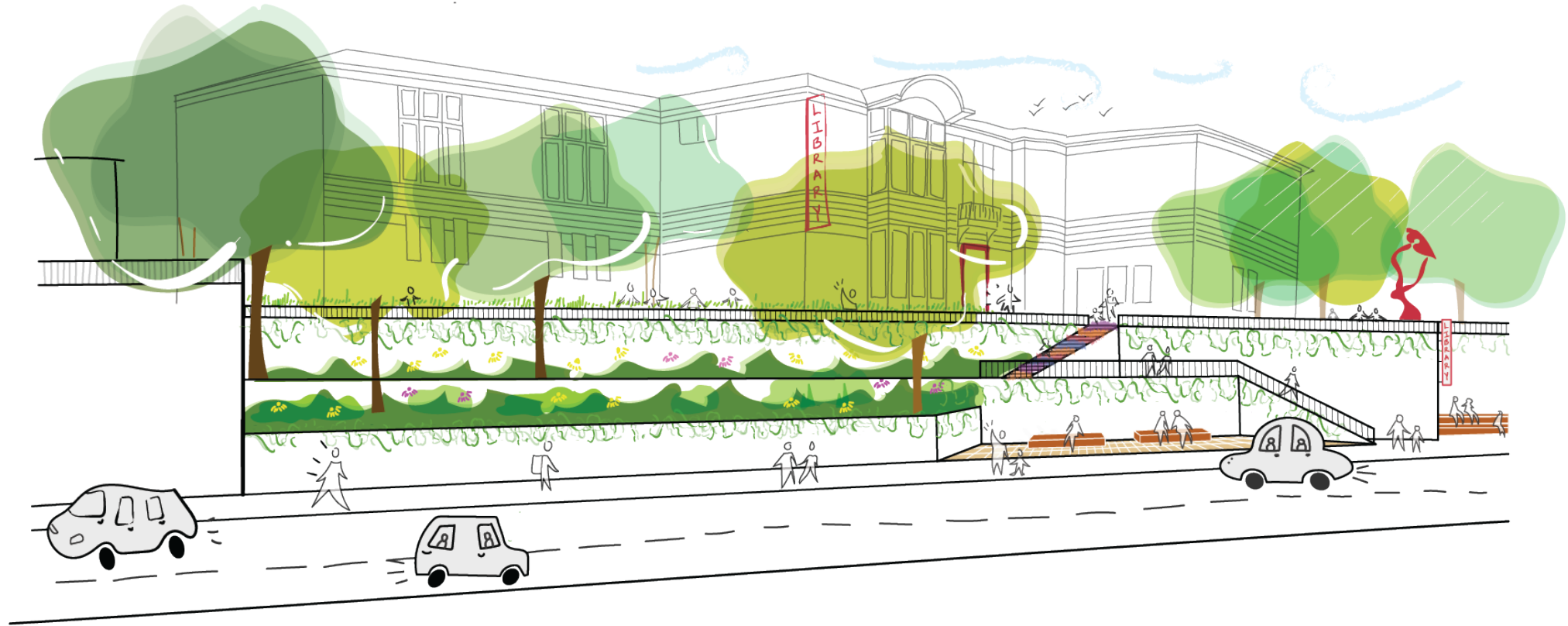
# East Side



# West & South Side



# West Side



# QUESTIONS?