

**MINNESOTA HISTORY / ARCHITECTURE INVENTORY FORM**  
**NORTHFIELD COMMERCIAL HISTORIC DISTRICT**  
Rice County, Minnesota

PROPERTY LOCATION	
<b>Property Name:</b> Alex Marshall Building	<b>Inventory No.:</b> RC-NFC- 298
<b>Address:</b> 306 Division Street, Northfield, MN	<b>PIN:</b> 2231350030
<b>QTR/QTR/T/R/S:</b> SW SW Section 31 T112N R19W	
<b>USGS Quad:</b> Northfield, Minnesota	<b>Plat Name:</b> Original Town <b>Block</b> River Lots <b>Lot</b> 6
<b>UTM Z 15</b> 487262E, 4922670N <b>NAD 83</b>	

PROPERTY INFORMATION	
<b>Construction Date:</b> 1932	<b>Style:</b> Commercial Style
<b>Historic Use:</b> commercial	<b>Current Use:</b> commercial
<b>Property Type:</b> commercial	<b>Historic Context:</b> "Commerce, 1856-1945"
<b>Architect/Builder</b>	<b>Survey Name:</b> Northfield Historic District Survey Revision Project, 2016
<b>Previous NRHP Status:</b> Contributing to Northfield Commercial Historic District	<b>NRHP Recommendation:</b> Contributing to Northfield Commercial Historic District
<b>Form Prepared by:</b> C. Zellie Landscape Research LLC	<b>Survey Date:</b> 3/2016



2016, looking west



ca. 1978

### Description

This two-story, flat-roofed building faces east on Division Street and the rear fronts the Cannon River and Cannon River Commons. The only remaining features of the historic building are the upper story and stepped parapet with tan stone coping. The rectangular windows have simple enframements and contain one-over-one, double-hung wood sash. The ground level was remodeled with two large arches opening to multiple storefronts and two arched single entries.

### History

The Marshall Building occupies the site of the former Waterston Sheet Metal building. The building originally housed the Alex Marshall Department Store and was one of few new downtown buildings erected in the 1930s. In 1974 it was remodeled for the Dahl House, a women's clothing store.

### Significance and Historic Context(s)

This building is associated with the third period of Northfield's commercial development, from ca. 1900 to 1945, when 14 of the 65 historic district buildings were constructed. It is associated with the Northfield historic context, "Commerce, 1856-1945" (Northfield Preservation Plan, 1992).

**MINNESOTA HISTORY / ARCHITECTURE INVENTORY FORM**  
**NORTHFIELD COMMERCIAL HISTORIC DISTRICT**  
**Rice County, Minnesota**

**Evaluation**

This property was listed on the NRHP in 1979 as contributing to the Northfield Commercial Historic District. Although this building is potentially historically significant under Criterion A for its role in the city's commercial development in the early twentieth century, the 1974 alterations are extensive and historic integrity is fair. Based on the retention of the upper story features, however, it is still contributing to the late 19th- and early 20th-century character of the streetscape and district.

**References**

Edwins, Steve, ed. *Northfield Downtown Guidebook*. Northfield Heritage Preservation Commission, 1982.

"Northfield Historic District," National Register of Historic Places Nomination, 1979.

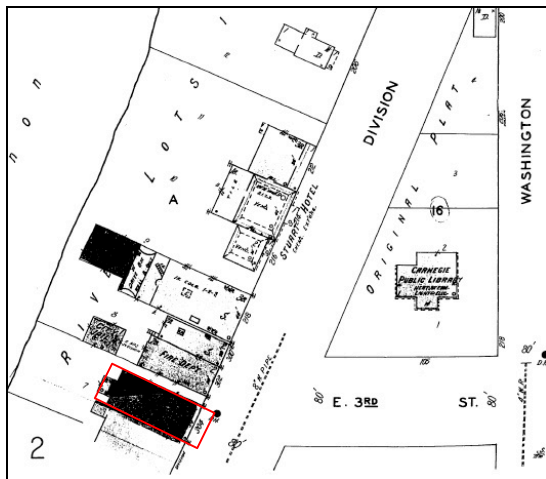
Northfield Historical Society. Photograph and research files. Northfield, Minnesota.

Rice County Assessor Records.

Sanborn Map & Publishing Company, New York. Northfield plates, 1886-1943.

Zellie, Carole. "Northfield Heritage Preservation Plan." Prepared for the Northfield Heritage Preservation Commission, Northfield, Minn. by Landscape Research, 1992.

**Sanborn and USGS Maps**



Sanborn Map and Publishing Co., 1930, updated to 1943.



USGS: Northfield 1984.