

NORTHFIELD'S CANNON RIVER REGIONAL PARK EXPERIENCE

AMES PARK PROJECT FOCUS

Primary ACTION PLAN Objective: To create a **signature downtown public park** that complements and connects with Bridge Square, serving to enhance and promote the Main Street Business District as a local activity hub and a premier regional destination.

KEY RECOMMENDATIONS

There is widespread agreement among the groups about Ames Park's key role in Northfield's new Regional Park Experience. It has been identified, in its entirety, as a **high priority, Phase One project**. Some specific initiatives include the following:

- ▷ Develop a refined park design program based on REAC/NPS 'bubble diagrams' and illustrative 'Park Concept Diagrams'
- ▷ Pursue an agreement with Post Properties for a shared parking strategy in the existing parking/service area as an essential component of park design
- ▷ Remove 'free' right turn from 5th to northbound Highway 3
- ▷ Explore potential for parallel parking and ADA drop-off drive alongside the park on northbound Highway 3
- ▷ Create bike lanes and widened pedestrian walks on the Hwy 19/5th St. Bridge
- ▷ Close the street between Bridge Square and the Downtown Riverwalk; activate the space with food trucks, sponsored activities, educational exhibits and other attractions

RELATED LINKS

Please explore the City Website to find these relevant City documents including the Climate Action Plan, Equity Action Plan, Parks, Open Space and Trail System Plan, Comprehensive Plan and many other important references.

Please explore the Riverfront Enhancement Action Plan (REAC) Website to find additional documents produced as part of the overall Action Plan process including the 5 River Districts information packet, the complete list of project opportunity rankings, and the summary list of National Park Service Project Recommendations.

GETTING STARTED!

- ✓ Confirm park design program and Phase One project components
- ✓ Coordinate park program and final design with proposed Downtown Riverwalk and Bridge Square improvements creating continuous loop along both sides of the river
- ✓ Identify potential public and private sector partners, influential stakeholders, and agency review criteria, including Wild and Scenic River constraints
- ✓ Research and pursue available funding sources, including grants, capital improvements programs, private investment
- ✓ Begin design process with qualified consultant, through conceptual design, design development, construction documents, bidding, contractor selection and completed construction

For a complete list of recommendations, please refer to the Links and Related Documents provided below.

The Riverfront Enhancement Action Plan is guided by existing adopted City planning documents. These documents, along with input from City Boards, Commissions, REAC Committee, National Park Service and other community participants, helped shape the Plan. As the City updates and creates new planning documents, we recognize that this Action Plan includes both exciting 'big-ideas' and specific action steps that will also evolve over time, continuing to build from the strategies, core values, and a shared vision that make Northfield a great PLACE.

CONTACT INFORMATION

For additional information please contact:

Northfield Public Works Department
507-645-3020

NORTHFIELD'S CANNON RIVER REGIONAL PARK EXPERIENCE

AMES PARK "VILLAGE GREEN ON THE WATER"

Strategically located along Highway 3 and directly across the Cannon River from the heart of downtown, Ames Park has a multiple roles to play in Northfield's emerging regional park experience.

As an iconic landmark and a key downtown gateway greeting travelers, Ames Park has the space and character to accommodate gatherings, performance and cultural events. But equally compelling is its role in accessing the riverfront itself and establishing places for strolling, viewing and quiet reflection along an exciting new segment of the Downtown Riverwalk. Safe access and parking must be addressed, as should select screening of the highway, but proven economical strategies are available to do so.



People are drawn to the water's edge as part of daily routine or special events



NPS and Park Board-facilitated REAC workshops explored ideas summarized in design program diagrams

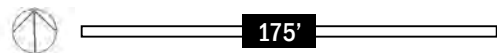
AMES PARK

“VILLAGE GREEN ON THE WATER”

NORTHFIELD'S CANNON RIVER REGIONAL PARK EXPERIENCE



AMES PARK CONCEPT DIAGRAM



KEY

- GATEWAY: PHYSICAL/VISUAL CONNECTION TO WATERFRONT WITH VERTICAL FOCAL POINT FEATURE, SEATING, PLANTINGS, KIOSK
- PROMENADE WITH SPECIAL PAVING
- “THE POINT” PLINTH WITH SPECIAL PAVING MATERIAL, TRANSPARENT RAILING ALONG WATER AND ARTFUL SEATING NODES ALONG WALKWAY
- SPECIALTY GARDENS: POLLINATOR, COLOR, FOCAL POINT FROM EAST BANK OF RIVER
- LONG LINEAR SEATWALLS
- BOULEVARD GARDENS AND PROMENADE
- ICONIC PLAYGROUNDS WITH ABSTRACT AND COLORFUL PLAY EQUIPMENT FOR ALL AGES
- STORMWATER GARDENS AND COLLECTION, INFILTRATION AND CONVEYANCE
- INTERPRETIVE WALK WITH ART/STORY WALK INTERACTIVE FEATURES
- HEAVY CONIFEROUS AND DECIDUOUS SCREENING ALONG ADJACENT INDUSTRIAL
- INFORMAL SEATING - BENCHES BENEATH TREES WITH NATIVE/HABITAT ENHANCING SHORELINE VEGETATION RESTORATION
- FLEX/MULTI-USE LAWN
- REMOVABLE SCULPTURAL PERFORMANCE SHADE CANOPY - HIGH END CANVAS SHADE CAN BE INSTALLED AND REMOVED SEASONALLY
- ADA PARKING AND DROP OFF
- POTENTIAL FUTURE STREET PARKING FOR TEMP PARKING AND EVENT VEHICLES - FOOD TRUCKS, ETC.
- POTENTIAL FUTURE RIVER STAGE AND STEPS
- POTENTIAL FUTURE RIVERWALK CONNECTION
- POTENTIAL FUTURE SHARED PARKING LOCATION AT POST PROPERTY
- POTENTIAL PICNIC/SHADE SHELTERS



Celebrate the urban interface with the river



Plant gardens to beautify + enhance environmental health



Provide choices for informal gathering and relaxation



Create inspirational and iconic play spaces

DRAFT



PARKS CONCEPT DIAGRAMS
05.08.2020

NORTHFIELD'S CANNON RIVER REGIONAL PARK EXPERIENCE

RIVERSIDE LIONS PARK PROJECT FOCUS

Primary ACTION PLAN Objective: To enhance and expand existing activity areas and amenities through phased implementation of key projects, building on the strong neighborhood presence and devoted users of the park.

KEY RECOMMENDATIONS

Already a well-used and appreciated neighborhood-oriented park, Riverside Lions Park is in need of updating, including better management of flooding and stormwater, new play and exercise facilities, and improved circulation through and within the space. The park is designated as a Phase Two project. Key initiatives include the following:

- ▷ Determine and develop list of potential Riverside Lions Park improvements as a Phase Two project
- ▷ Review and refine detailed park design program based on REAC/NPS 'bubble diagrams' and illustrative 'Park Concept Diagrams'
- ▷ Manage stormwater in a series of linear basins that also act as pollinator gardens, to better define spaces for additional recreational uses and other park design program components
- ▷ Provide a central flex/green space to accommodate small summer gatherings, with conversion to a skating rink in winter
- ▷ Upgrade restroom and picnic facilities
- ▷ Explore design options to improve the Farmers Market experience at the foot of 7th St
- ▷ Explore potential to create space for dog park (moved from Babcock Park)

RELATED LINKS

Please explore the City Website to find these relevant City documents including the Climate Action Plan, Equity Action Plan, Parks, Open Space and Trail System Plan, Comprehensive Plan and many other important references.

Please explore the Riverfront Enhancement Action Plan (REAC) Website to find additional documents produced as part of the overall Action Plan process including the 5 River Districts information packet, the complete list of project opportunity rankings, and the summary list of National Park Service Project Recommendations.

GETTING STARTED!

- ✓ Confirm design program and "Essential Park Improvements" for Phase Two design and construction
- ✓ Coordinate volunteer riverbank clean-up and pollinator garden planting events
- ✓ Identify potential public and private sector partners, influential stakeholders, and agency review criteria, including Wild and Scenic River constraints
- ✓ Research and pursue available funding sources, including grants, capital improvements programs, private investment
- ✓ Outline design process and project scope to insure fit with Phase One projects

For a complete list of recommendations, please refer to the Links and Related Documents provided below.

The Riverfront Enhancement Action Plan is guided by existing adopted City planning documents. These documents, along with input from City Boards, Commissions, REAC Committee, National Park Service and other community participants, helped shape the Plan. As the City updates and creates new planning documents, we recognize that this Action Plan includes both exciting 'big-ideas' and specific action steps that will also evolve over time, continuing to build from the strategies, core values, and a shared vision that make Northfield a great PLACE.

CONTACT INFORMATION

For additional information please contact:

Northfield Public Works Department
507-645-3020

NORTHFIELD'S CANNON RIVER REGIONAL PARK EXPERIENCE

RIVERSIDE LIONS PARK "ENGAGING NEIGHBORHOOD AMENITY"

More than any of the other parks, Riverside Lions Park is embedded in the neighborhood context. The nature and strength of neighborhood parks is their attention to meeting the needs of a varied constituency with a variety of smaller venues. Elements such as the existing memorial, new pickle ball courts and shuffleboard courts, potential fitness and art pods, all lend character to the park. A winter skating rink is also proposed to enhance year around use of the park. The regional trail provides two options for traversing the park in the event of high water under the Highway 3 bridge.



Stormwater management components are integrated with park design features

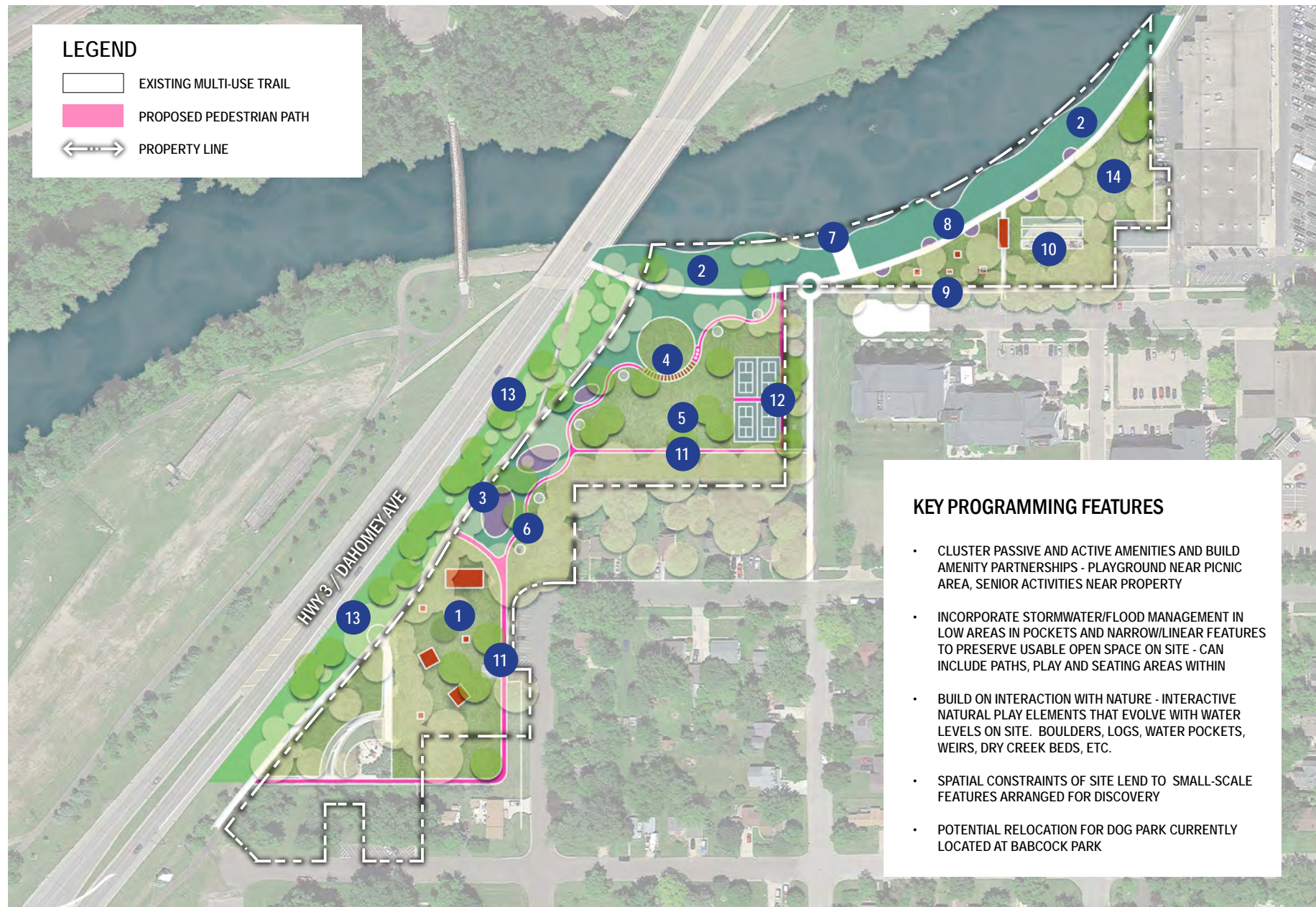


NPS and Park Board-facilitated REAC workshops explored ideas summarized in design program diagrams

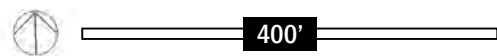
RIVERSIDE LIONS PARK

“ENGAGING NEIGHBORHOOD
AMENITY”

NORTHFIELD'S CANNON RIVER REGIONAL PARK EXPERIENCE



RIVERSIDE LIONS PARK CONCEPT DIAGRAM



DRAFT



PARKS CONCEPT DIAGRAMS
05.08.2020



Develop unique, family-friendly winter experiences



Use native landscapes for stormwater and flood-control gardens



Create unique and whimsical places for play



Construct state-of-the-art, multi-use game courts

NORTHFIELD'S CANNON RIVER REGIONAL PARK EXPERIENCE

BABCOCK PARK PROJECT FOCUS

Primary ACTION PLAN Objective: To create an **active recreation-based local and regional destination** that will attract all age groups with year-round activities and flexible spaces to accommodate a range of programmed uses and special events.

KEY RECOMMENDATIONS

Historically underutilized, Babcock Park has the space and flexibility to accommodate a wide range of unique recreational activities and improved river access in a transformed site. The park has been designated a Phase One project. Important initiatives include:

- ▷ Develop a refined park design program based on REAC/NPS 'bubble diagrams' and illustrative 'Park Concept Diagrams'
- ▷ Identify and refine high priority projects for Phase One development
- ▷ Undertake a feasibility study for potential multi-use building as Northfield's first indoor, public riverfront space
- ▷ Explore potential building uses including: nature interpretive center, trailhead, restrooms, rental facilities, storage for programmed activities
- ▷ Explore potential profit-generating activities to offset operating costs including equipment rental, snack shop, fitness center, rental space for private events
- ▷ Relocate DOJJ rodeo and dog park out of Babcock Park once new locations are identified and constructed
- ▷ Develop canoe and kayak water access as part of the Cannon River Trail

RELATED LINKS

Please explore the City Website to find these relevant City documents including the Climate Action Plan, Equity Action Plan, Parks, Open Space and Trail System Plan, Comprehensive Plan and many other important references.

Please explore the Riverfront Enhancement Action Plan (REAC) Website to find additional documents produced as part of the overall Action Plan process including the 5 River Districts information packet, the complete list of project opportunity rankings, and the summary list of National Park Service Project Recommendations.

GETTING STARTED!

- ✓ Confirm park design program and Phase One project components
- ✓ Identify potential public and private sector partners, influential stakeholders, and agency review criteria, including Wild and Scenic River constraints
- ✓ Identify potential public and private sector partners, influential stakeholders, and agency review criteria
- ✓ Research and pursue available funding sources, including grants, capital improvements programs, private investment
- ✓ Begin design process with qualified consultant, through conceptual design, design development, construction documents, bidding, contractor selection and completed construction

For a complete list of recommendations, please refer to the Links and Related Documents provided below.

The Riverfront Enhancement Action Plan is guided by existing adopted City planning documents. These documents, along with input from City Boards, Commissions, REAC Committee, National Park Service and other community participants, helped shape the Plan. As the City updates and creates new planning documents, we recognize that this Action Plan includes both exciting 'big-ideas' and specific action steps that will also evolve over time, continuing to build from the strategies, core values, and a shared vision that make Northfield a great PLACE.

CONTACT INFORMATION

For additional information please contact:

Northfield Public Works Department
507-645-3020

NORTHFIELD'S CANNON RIVER REGIONAL PARK EXPERIENCE

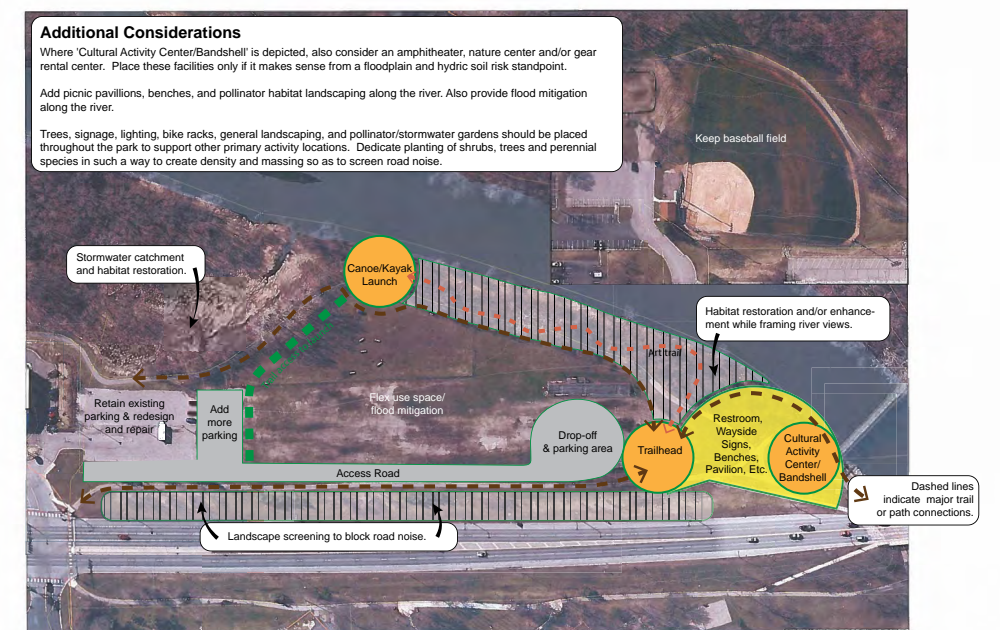
BABCOCK PARK "DESTINATION ADVENTURE PARK"

Babcock Park has the potential to become an exciting signature destination that will draw enthusiasts from Northfield and beyond. Envisioned as an active recreational facility, the conceptual diagram envisions a number of challenging bicycle attractions designed for varied ages and skill levels. In addition, a canoe and kayak landing is part of the recreational experience. A rental and maintenance facility with restrooms is also part of the concept, as are a new trail head and improved connections to the pedestrian bridge over the Cannon River.

Babcock is envisioned as an active place for all — families with young kids, athletes honing their competitive skills, water lovers visiting town and wanting to rent a canoe. The riverfront trail passes through the park, making it easily accessible for cyclists and cross-country skiers alike. Additional parking is located at the southern end of the site.



Potential multi-purpose building like this one at The Trailhead in Wirth Park, Minneapolis



Babcock Park

NPS and Park Board-facilitated REAC workshops explored ideas summarized in design program diagrams

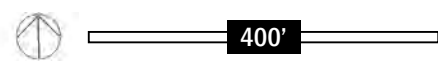
BABCOCK PARK

“DESTINATION ADVENTURE PARK”

NORTHFIELD'S CANNON RIVER REGIONAL PARK EXPERIENCE



BABCOCK PARK EAST CONCEPT DIAGRAM



DRAFT



PARKS CONCEPT DIAGRAMS

05.08.2020



Develop a variety of unique and challenging experiences



Include facilities to attract a wide range of users



Enhance physical fitness with popular elements such as climbing walls



Strengthen riverfront connections and landings

NORTHFIELD'S CANNON RIVER REGIONAL PARK EXPERIENCE

SECHLER PARK PROJECT FOCUS

Primary ACTION PLAN Objective: To enhance this major city amenity as the primary destination for organized team sports, nature-based activities and immersion in the ecosystems adjacent to the river.

KEY RECOMMENDATIONS

Already a successful and loved park for organized sports, Sechler Park has the potential to augment existing facilities with added play and picnic features among the game fields and a natural experience with trails and interpretive elements in the woodlands. The park is designated as a **Phase Two** project. Initiatives include:

- ▷ Determine and develop list of potential Sechler Park improvements as a Phase Two project
- ▷ Develop a refined park design program based on REAC/NPS 'bubble diagrams' and illustrative 'Park Concept Diagrams'
- ▷ Explore bike trail alignments in the lower portion of the park and identify potential private sector partners for trails development
- ▷ Explore possible funding sources to enable trail improvements to be implemented

RELATED LINKS

Please explore the City Website to find these relevant City documents including the Climate Action Plan, Equity Action Plan, Parks, Open Space and Trail System Plan, Comprehensive Plan and many other important references.

Please explore the Riverfront Enhancement Action Plan (REAC) Website to find additional documents produced as part of the overall Action Plan process including the 5 River Districts information packet, the complete list of project opportunity rankings, and the summary list of National Park Service Project Recommendations.

GETTING STARTED!

- ✓ Confirm design program and "Essential Park Improvements" for Phase Two design and construction
- ✓ Determine feasibility of adding a pedestrian and bike bridge connection between Sechler Park and Babcock Park
- ✓ Coordinate volunteer riverbank clean-up and pollinator garden planting events
- ✓ Identify potential public and private sector partners, influential stakeholders, and agency review criteria, including Wild and Scenic River constraints
- ✓ Research and pursue available funding sources, including grants, capital improvements programs, private investment
- ✓ Outline design process and project scope to insure fit with Phase One projects

For a complete list of recommendations, please refer to the Links and Related Documents provided below.

The Riverfront Enhancement Action Plan is guided by existing adopted City planning documents. These documents, along with input from City Boards, Commissions, REAC Committee, National Park Service and other community participants, helped shape the Plan. As the City updates and creates new planning documents, we recognize that this Action Plan includes both exciting 'big-ideas' and specific action steps that will also evolve over time, continuing to build from the strategies, core values, and a shared vision that make Northfield a great PLACE.

CONTACT INFORMATION

For additional information please contact:

Northfield Public Works Department
507-645-3020

NORTHFIELD'S CANNON RIVER REGIONAL PARK EXPERIENCE

SECHLER PARK "HOME FOR SPORTS AND NATURE"

With a focus on organized team sports, Sechler Park has a unique role among Northfield's riverfront parks. With space to accommodate picnicking and playgrounds as well as numerous game fields and parking, the upper part of Sechler is a well-maintained and appreciated destination for athletes and fans. A proposed bridge across the Cannon will make the park much more accessible for bicycles and pedestrians.

The lower, more natural portion of this site offers excellent opportunities for mountain biking and a natural skills trail. Cross country skiing can also be accommodated in winter. Two trail heads link the upper and lower parts of the site together. The multi-use trail that skirts the edge of the park is an important link for the regional trail system on the west side of the river.



Natural areas weave through the park, creating green screens around active sports fields while providing landscape variety, habitat and discovery



Sechler Park

NPS and Park Board-facilitated REAC workshops explored ideas summarized in design program diagrams

SECHLER PARK

“HOME FOR SPORTS AND NATURE”

NORTHFIELD'S CANNON RIVER REGIONAL PARK EXPERIENCE

KEY PROGRAMMING FEATURES:

- INCORPORATE (2) NEW FIELDS TO AVOID WEST ORIENTATION AND ADD PARKING
- REORIENT WESTERN PORTION OF ROADWAY AND WESTERN PARKING TO ACCOMMODATE NEW WESTERN FIELD AND ESTABLISH HIERARCHY OF MAIN ENTRANCE AND CIRCULATION TO PICNIC SHELTERS, PLAYGROUNDS, TRAILHEAD, RESTROOMS, ETC.
- SIMPLIFY TRAIL CONSIDERATIONS FOR LOWER BLUFF AND EMPHASIZE MOUNTAIN BIKING IN THIS PARK - SIGNIFICANT TOPOGRAPHICAL VARIATIONS THROUGHOUT SOUTHERN HALF OF SITE
- EXPANDED PLAY SPACES TO INCLUDE FITNESS/SPORT-BASED PLAY CAMPUS (OBSTACLE COURSE, PARKOUR, NINJA WARRIOR, FITNESS)
- SPATIAL CONSTRAINTS LEAD TO LIMITED ADDITIONAL INFRASTRUCTURE AT TOP OF BLUFF
- UPGRADE TRAIL CIRCULATION IN THE VICINITY OF RAIL/ROAD CROSSING



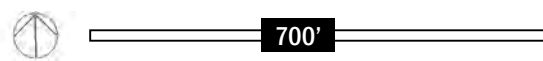
KEY

- 1 NEW CROSSWALK AND PAVED TRAIL CONNECTION ACROSS RAILROAD SEPARATED FROM STREET
- 2 WAYSIDE REST AND OVERLOOK
- 3 MOUNTAIN BIKE TRAIL TO FOLLOW NATURAL PATH ALIGNMENT
- 4 WOODED TRAIL-RIDING LOOP (BIKES)
- 5 TRAILHEAD
- 6 NEW TRAIL LOOP
- 7 NEW PICNIC SHELTER
- 8 NEW ICONIC SHELTER WITH RESTROOM BUILDING AND WAYFINDING KIOSK
- 9 NEW FIELD
- 10 NEW PARKING AT PICNIC / PLAYGROUND/TRAILHEAD AREA
- 11 NEW PEDESTRIAN BRIDGE
- 12 ENLARGED FUTURE FITNESS-FOCUSED PLAYGROUND (OBSTACLE COURSE, NINJA WARRIOR, PARKOUR, FITNESS CIRCUITS - CONSIDER EXPANSION AND INTERACTION WITH EMBANKMENT TO THE SOUTH - CLIMBING WALL, HILLSIDE SLIDES, ETC.)
- 13 EXISTING MULTI-USE TRAIL

LEGEND

- EXISTING MULTI-USE TRAIL
- PROPOSED MULTI-USE TRAIL
- PROPOSED MOUNTAIN BIKING TRAIL
- PROPERTY LINE

SECHLER PARK CONCEPT DIAGRAM



DRAFT



PARKS CONCEPT DIAGRAMS
05.08.2020



Integrate shade structures to provide comfort



Develop play areas to augment existing facilities



Take advantage of the dynamic topography



Enhance the woodland trail system for year-round use

NORTHFIELD'S CANNON RIVER REGIONAL PARK EXPERIENCE

AMES MILL DAM PROJECT FOCUS

Primary ACTION PLAN Objective: To continue the study process already initiated to explore a range of concepts for the Ames Mill Dam (including leaving it in place), with associated costs/benefits analyses to determine the feasibility and efficacy of each option and arrive at a preferred path forward.

KEY RECOMMENDATIONS

The Ames Mill Dam plays a key role in the recreational potential and environmental health of the Cannon River through downtown Northfield. While some favor removal and some favor keeping the dam, there is general agreement that more needs to be known to aid in that decision. Important considerations include:

- ▷ MUST be addressed in the plan and at a minimum must include an option of removal/reconstruction
- ▷ MUST consider potential impacts and benefits across multiple categories and criteria – environment, economic, sports and recreation, design aesthetics, and social and cultural objectives
- ▷ Concept options, as recommended by DNR Staff and other stakeholders, will assess a range of alternatives from keeping and repairing existing dam, to creation of a new “whitewater park” attraction
- ▷ Design solutions will connect and integrate with broader uses of the river corridor, maintain or enhance natural systems and ecological health, and ‘FIT’ within the context of the Cannon River Watershed.

RELATED LINKS

Please explore the City Website to find these relevant City documents including the Climate Action Plan, Equity Action Plan, Parks, Open Space and Trail System Plan, Comprehensive Plan and many other important references.

Please explore the Riverfront Enhancement Action Plan (REAC) Website to find additional documents produced as part of the overall Action Plan process including the 5 River Districts information packet, the complete list of project opportunity rankings, and the summary list of National Park Service Project Recommendations.

GETTING STARTED!

- ✓ Meet with dam owners, the DNR and other stakeholders to determine study process
- ✓ Determine if you need additional consultant expertise to support study process
- ✓ Complete fact-finding, precedent project research; explore and catalog range of options
- ✓ Evaluate options based on study objectives, program criteria, and potential costs/benefits
- ✓ Prepare detailed feasibility analysis; ‘schematic design’ drawings, cost evaluation
- ✓ Depending on outcomes, pursue partnerships, process and funding to implement

For a complete list of recommendations, please refer to the Links and Related Documents provided below.

The Riverfront Enhancement Action Plan is guided by existing adopted City planning documents. These documents, along with input from City Boards, Commissions, REAC Committee, National Park Service and other community participants, helped shape the Plan. As the City updates and creates new planning documents, we recognize that this Action Plan includes both exciting ‘big-ideas’ and specific action steps that will also evolve over time, continuing to build from the strategies, core values, and a shared vision that make Northfield a great PLACE.

CONTACT INFORMATION

For additional information please contact:

Northfield Public Works Department
507-645-3020

NORTHFIELD'S CANNON RIVER REGIONAL PARK EXPERIENCE

AMES MILL DAM RECONSTRUCTION FEASIBILITY STUDY



Anticipated dam maintenance and repair provides an opportunity to explore reconstruction options

There is growing enthusiasm about the possibility that the Ames Mill Dam might play an important role in reinforcing the health, continuity and variety of the Cannon River State Water Trail. Designated as a wild and scenic river, the Cannon still suffers from environmental degradation and human intervention. The Ames Mill Dam, admittedly an attractive feature downtown, inhibits the natural processes of the river and limits recreational possibilities. A reconstruction of the existing dam has the potential to be both a restorative feature and significant recreational regional attraction.

A preliminary study of the dam reinforces the idea that an exciting and rare whitewater experience could be created with the combination of a smaller, navigable dam and weir and a constructed whitewater course. Research has begun that outlines the potential for transferring the privately held dam to the City of Northfield. More study needs to be completed and discussion with Post properties should be ongoing to fully evaluate the implications of an eventual transformation.



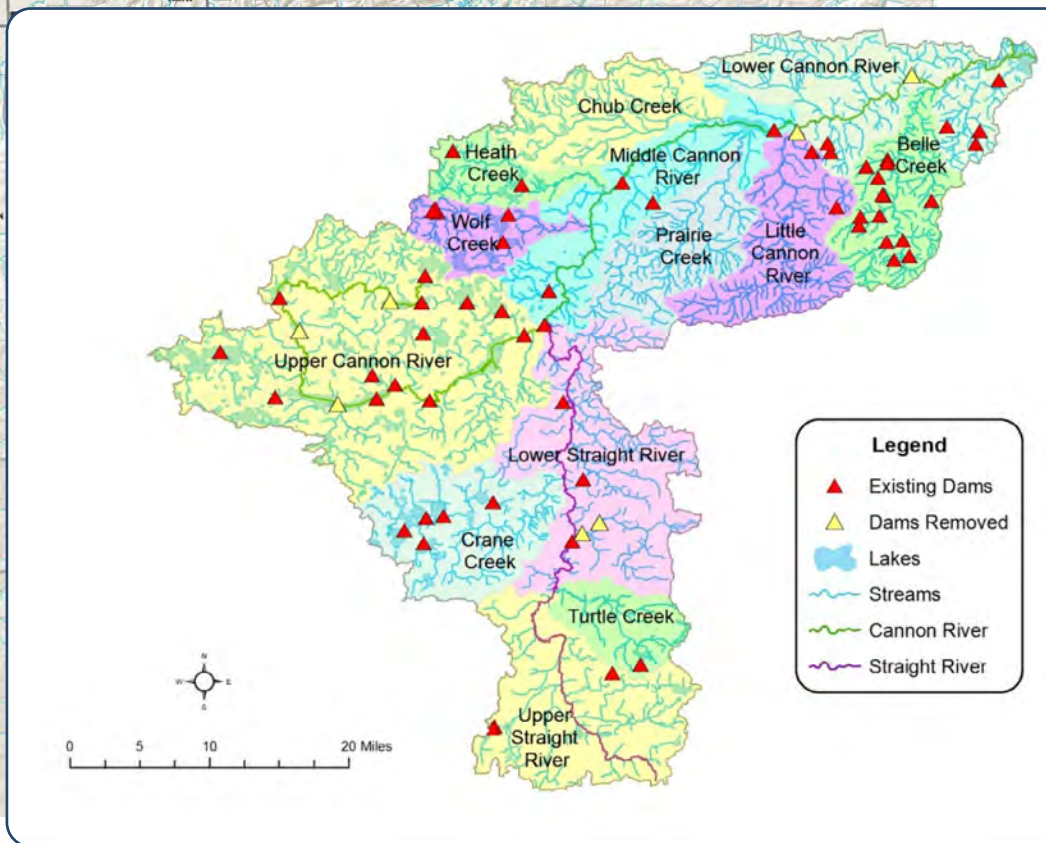
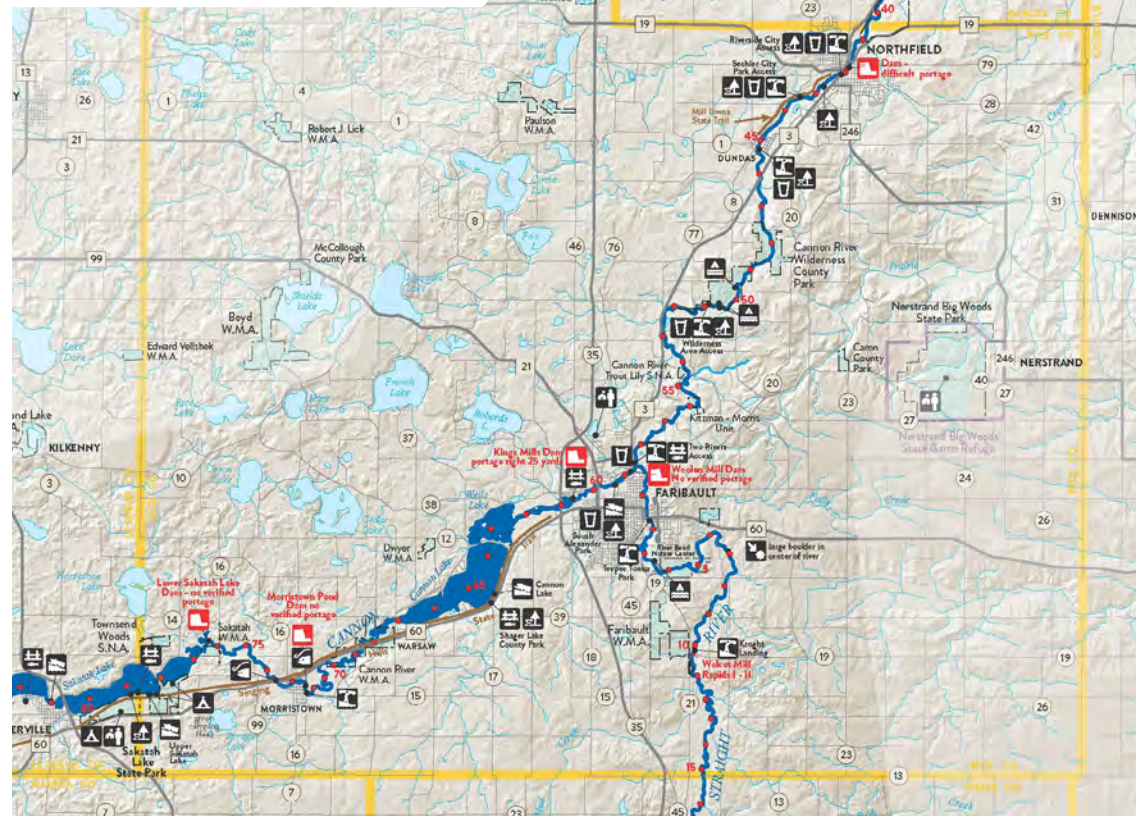
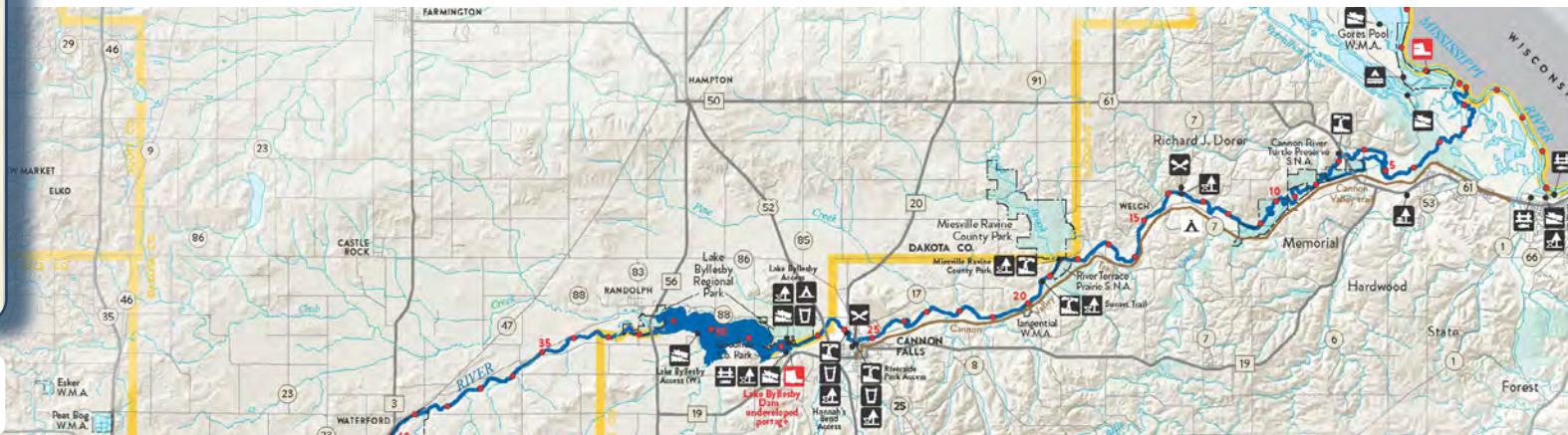
AMES MILL DAM RECONSTRUCTION FEASIBILITY STUDY

NORTHFIELD'S CANNON RIVER REGIONAL PARK EXPERIENCE

The Cannon River travels 112 miles from Shields Lake to the Mississippi River, with the 5 river segments identified in the Action Plan located almost exactly at the midpoint between the two. This strategic geography implies both opportunity and responsibility as Phase One projects seek to connect with this amazing resource.



Ames Mill and Dam 1930 (photo courtesy of the Northfield Historical Society)

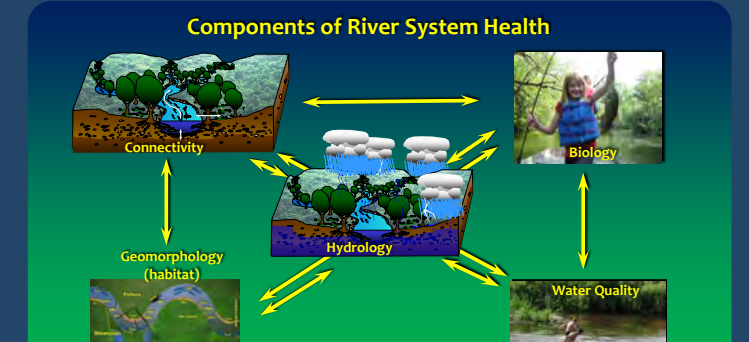


The Cannon River Watershed drains almost 1,500 square miles; it's interesting to note the number of dams, both existing and removed, indicated by the triangles on this map.

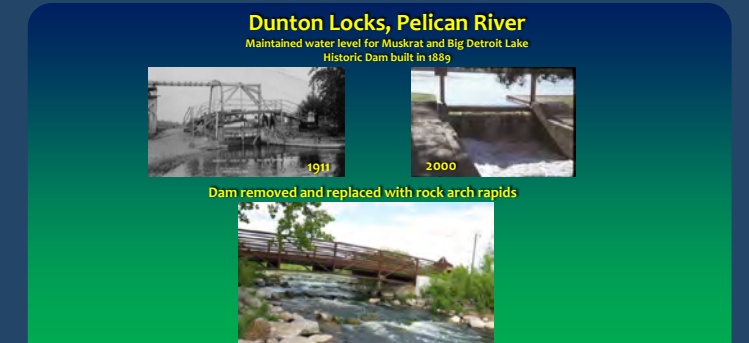
Study process will explore ideas and options including . . .



Preserve and repair existing dam



Respect and respond to the science of river health



Research and learn from similar projects



Evaluate a range of design alternatives

NORTHFIELD'S CANNON RIVER REGIONAL PARK EXPERIENCE

DOWNTOWN RIVERWALK PROJECT FOCUS

Primary ACTION PLAN Objective: To create a universally accessible, highly visible, signature destination loop walkway/trail that connects both sides of the river with the Downtown Business District, enhanced riverfront parks, the local and regional trail system and other city amenities and attractions.

KEY RECOMMENDATIONS

Already an immensely popular feature of downtown, an improved and completed, universally-accessible Downtown Riverwalk has the potential to elevate Northfield's riverfront into world-class experience that is both intimate and dynamic. Key strategies include:

- ▷ Fill in the missing pieces; connect with existing walks and trails to provide a completed loop
- ▷ Encourage integration of private and public properties; demonstrate how seamless, barrier-free connections with proposed riverfront enhancements delivers multiple benefits
- ▷ Provide incentives for specific land or building owners to improve the river side of their properties to share costs and benefits of riverfront enhancements
- ▷ Focus on wayfinding signs and maps to help orient visitors and increase trail use

RELATED LINKS

Please explore the City Website to find these relevant City documents including the Climate Action Plan, Equity Action Plan, Parks, Open Space and Trail System Plan, Comprehensive Plan and many other important references.

Please explore the Riverfront Enhancement Action Plan (REAC) Website to find additional documents produced as part of the overall Action Plan process including the 5 River Districts information packet, the complete list of project opportunity rankings, and the summary list of National Park Service Project Recommendations.

GETTING STARTED!

- ✓ Focus on actions that maintain and enhance existing segments with furnishings, lighting, seating, regular programming, improved river access
- ✓ Coordinate volunteer riverbank clean-up events
- ✓ Identify potential public and private sector partners, influential stakeholders, and agency review criteria, including Wild and Scenic River constraints
- ✓ Research and pursue available funding sources, including grants, capital improvements programs, private investment
- ✓ Begin design process for missing segments with qualified consultant, through conceptual design, design development, construction documents, bidding, contractor selection and completed construction

For a complete list of recommendations, please refer to the Links and Related Documents provided below.

The Riverfront Enhancement Action Plan is guided by existing adopted City planning documents. These documents, along with input from City Boards, Commissions, REAC Committee, National Park Service and other community participants, helped shape the Plan. As the City updates and creates new planning documents, we recognize that this Action Plan includes both exciting 'big-ideas' and specific action steps that will also evolve over time, continuing to build from the strategies, core values, and a shared vision that make Northfield a great PLACE.

CONTACT INFORMATION

For additional information please contact:

Northfield Public Works Department
507-645-3020

NORTHFIELD'S CANNON RIVER REGIONAL PARK EXPERIENCE

DOWNTOWN RIVERWALK



Action Plan objectives focus on creating multiple, highly visible connections between the Downtown District and the river

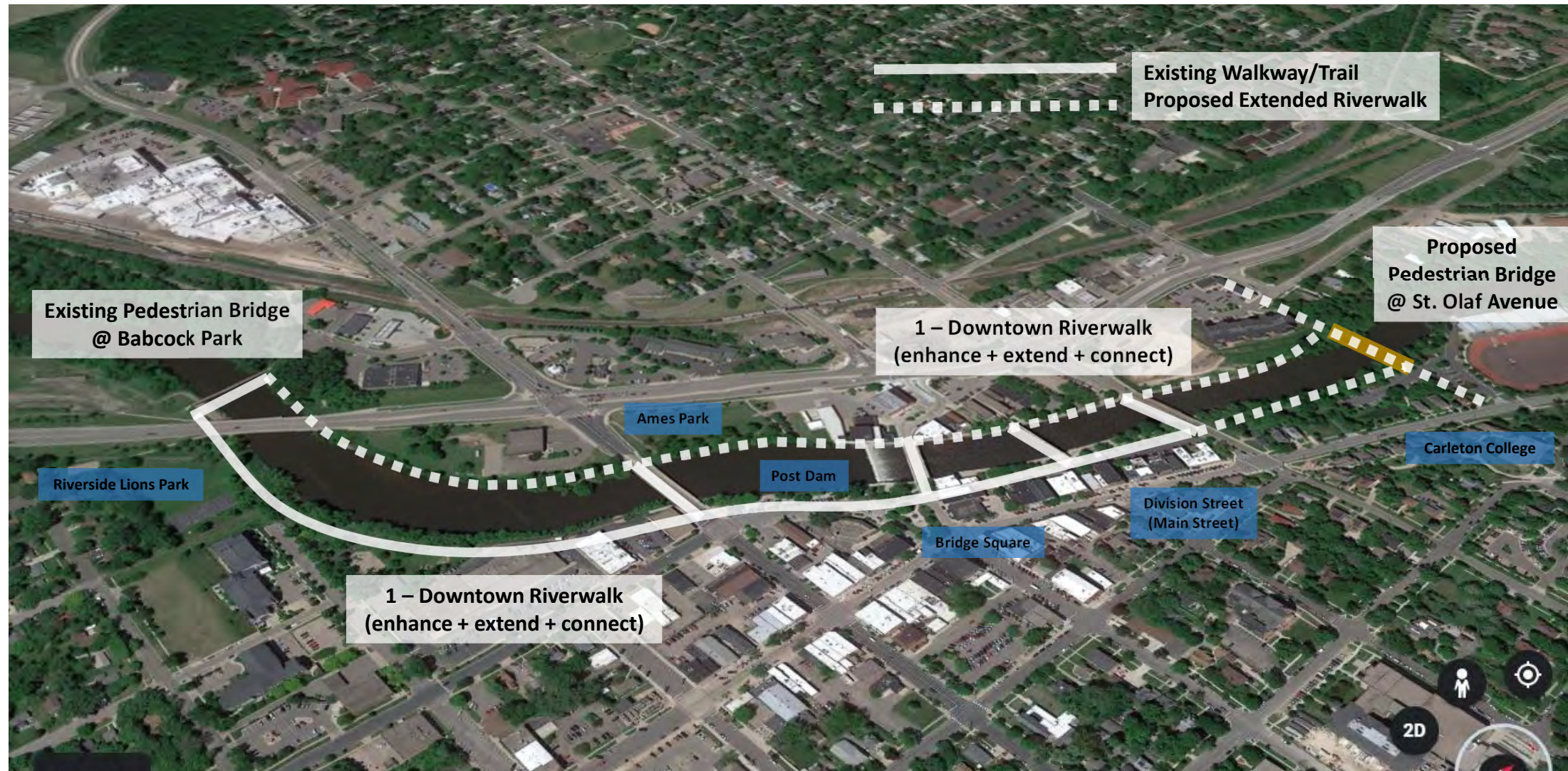
The beauty, scale and proximity of the Cannon River to downtown Northfield provide a unique and intimate experience for visitors and locals alike. The immediacy of the riverfront and the charm and integrity of downtown Division Street, Bridge Square and the Water Street Bridge set Northfield apart from most small river towns. The Riverwalk is envisioned to be a four-season walking attraction, lighted and inviting in winter and brimming with walkers and diners in summer. It should be universally accessible, allowing wheelchairs and families with baby stroller to enjoy the entirety of the urban riverfront.

Portions of the Downtown Riverwalk have been completed; there is still much work to be done to acquire property or obtain easements to facilitate a continuous public waterfront promenade from south of the 5th Street Bridge adjacent to existing commercial uses, extending north beyond the 2nd Street Bridge. With building uses spilling out onto the water's edge, and enhanced pedestrian amenities such as boardwalk, seating, and lighting, the Riverwalk has the potential to become a world-class riverfront experience.



DOWNTOWN RIVERWALK

NORTHFIELD'S CANNON RIVER REGIONAL PARK EXPERIENCE



Much of the downtown riverfront property is either publicly held, or offers great opportunities to partner with private owners, to fill in the missing pieces of the proposed Downtown Riverwalk.

Completing the Downtown Riverwalk will rely on a phased, somewhat opportunistic approach that takes advantage of numerous other project initiatives, such as implementation of the Mill Towns Trail and future Ames Park river edge improvements, to fill in missing pieces and connect with regional systems. But there is also an opportunity to recognize and leverage the existing level of activity and magnetic attraction of your Downtown District. There is great potential to create early impact with initial, smaller 'loop' connections that tie east and west sides of river together from Bridge Square to Ames Park. This would have an immediate positive impact on the downtown experience, compliment commercial district activities and provide a crucial starting point from which to extend and connect future loop segments.

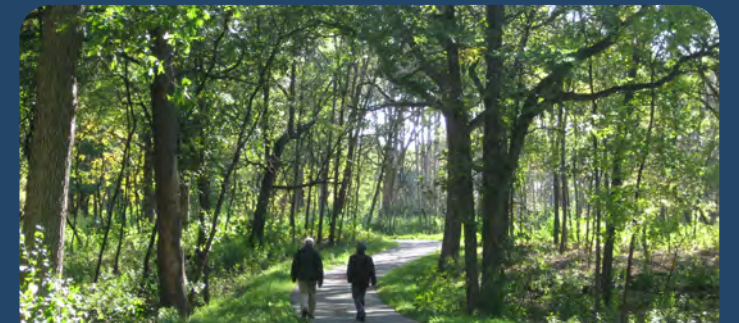
Trail connections and enhancements will require a variety of design solutions . . .



The 'urban edge' encourages a more integrated relationship between downtown and the river



Connect with existing bridge at Babcock Park and add new bridge at St. Olaf Avenue



Promote and enhance access to natural areas as part of your unique urban ecology



Explore cantilever or catwalk solutions to connect beneath bridges or along buildings adjacent to the river

NORTHFIELD'S CANNON RIVER REGIONAL PARK EXPERIENCE

LOCAL + REGIONAL TRAIL SYSTEM PROJECT FOCUS

Primary ACTION PLAN Objective: Simply stated, the primary objective is to 'Connect-the-Dots' and complete and upgrade the missing or substandard segments of desired walkways or trail loops that provide links to both local and regional amenities and destinations.

KEY RECOMMENDATIONS

Critical to the success of Northfield's Regional Park Experience are the connections between the parks and amenities. Trails provide accessibility and continuity, in addition to being exciting elements themselves. There is broad agreement about the importance of completing and improving the trail system. Key considerations include:

- ▷ Fill in missing pieces; connect new trail segments with existing walks and trails to provide a system of completed loops
- ▷ Connect with State Trail system; evaluate economic, and other benefits that inform construction phasing
- ▷ Connect with existing Cannon River Trail; begin coordinated planning effort to build advocacy
- ▷ Emphasize this multi-faceted river corridor that promotes both land-based and water-based activities
- ▷ Explore opportunities for WILD AND SCENIC river designation
- ▷ Promote the entire river corridor as a unique Northfield asset and regional park experience taking advantage of many acres of publicly owned land
- ▷ Install a comprehensive wayfinding system for bicyclists, pedestrians and non-motorized trail users

RELATED LINKS

Please explore the City Website to find these relevant City documents including the Climate Action Plan, Equity Action Plan, Parks, Open Space and Trail System Plan, Comprehensive Plan and many other important references.

Please explore the Riverfront Enhancement Action Plan (REAC) Website to find additional documents produced as part of the overall Action Plan process including the 5 River Districts information packet, the complete list of project opportunity rankings, and the summary list of National Park Service Project Recommendations.

GETTING STARTED!

- ✓ Focus on completing the Mill Towns Trail extension (DNR is currently working with Public Works on alignment)
- ✓ Select quick turnaround enhancement projects for existing segments, including Phase One wayfinding system design and installation, lighting, furniture and other improvements
- ✓ Coordinate volunteer riverbank clean-up events
- ✓ Identify potential public and private sector partners, influential stakeholders, and agency review criteria, including Wild and Scenic River constraints
- ✓ Research and pursue available funding sources, including grants, capital improvements programs, private investment
- ✓ Begin design process to define alignment and cost of missing segments

For a complete list of recommendations, please refer to the Links and Related Documents provided below.

The Riverfront Enhancement Action Plan is guided by existing adopted City planning documents. These documents, along with input from City Boards, Commissions, REAC Committee, National Park Service and other community participants, helped shape the Plan. As the City updates and creates new planning documents, we recognize that this Action Plan includes both exciting 'big-ideas' and specific action steps that will also evolve over time, continuing to build from the strategies, core values, and a shared vision that make Northfield a great PLACE.

CONTACT INFORMATION

For additional information please contact:

Northfield Public Works Department
507-645-3020

NORTHFIELD'S CANNON RIVER REGIONAL PARK EXPERIENCE

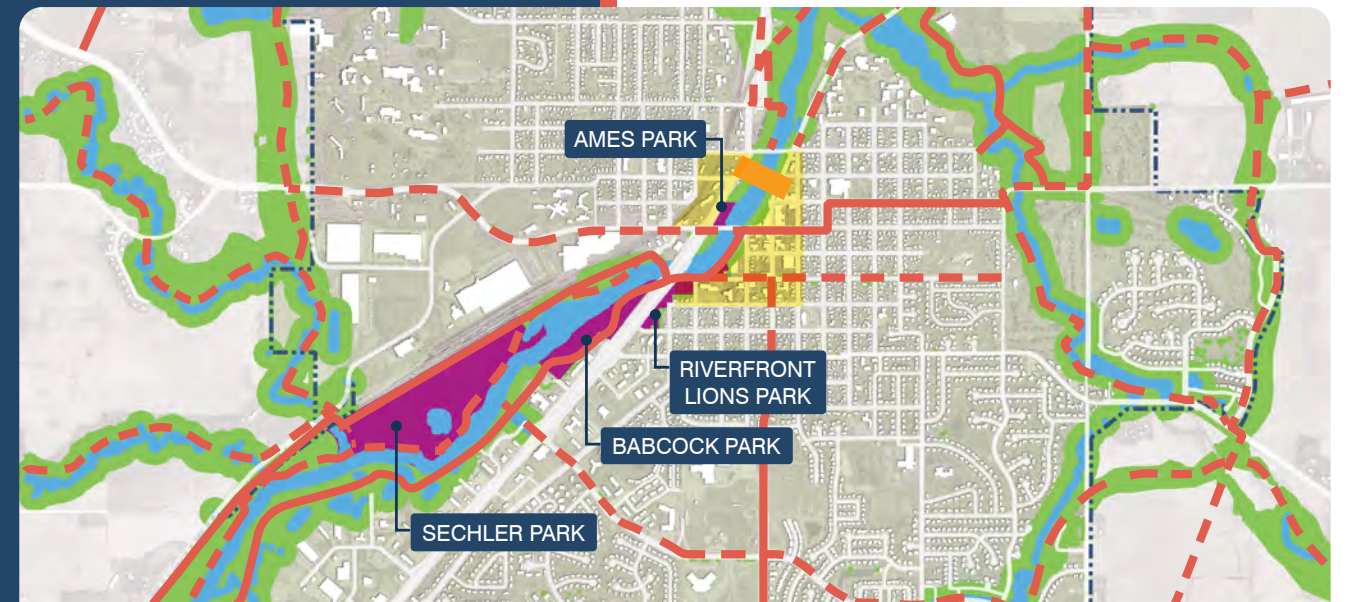
LOCAL AND REGIONAL TRAIL SYSTEM



Extend and provide connections to the existing trail system to enhance the network for local and regional visitors.

In addition to the Downtown Riverwalk, there is an exciting and expansive system of trails emerging in southeast Minnesota. The Mills Town State trail, which includes a three-mile portion from Northfield to Dundas, will eventually connect the Sakatah Singing Hills State Trail with the west end of the Cannon Valley Trail to comprise one of the more beautiful network of trails in Minnesota. It is important to note that pursuing State Water Trail designation is a key component of the trail system plan. While portions of this system are in place, there are numerous places where the trail system is in disrepair or needs to be upgraded to meet the requirements of more stringent state standards. A coordinated sign system along the trails is also a key to their success, providing information about accessing links to other trails as well as finding downtown and other assets.

In Northfield, safe and plentiful connections to the surrounding neighborhoods need to be developed to provide easy access to it. In time, the trails in and around town, combined with the well-maintained surrounding County roads, Northfield can build on its existing reputation as a signature attraction for bicycle enthusiasts from around the state and beyond.



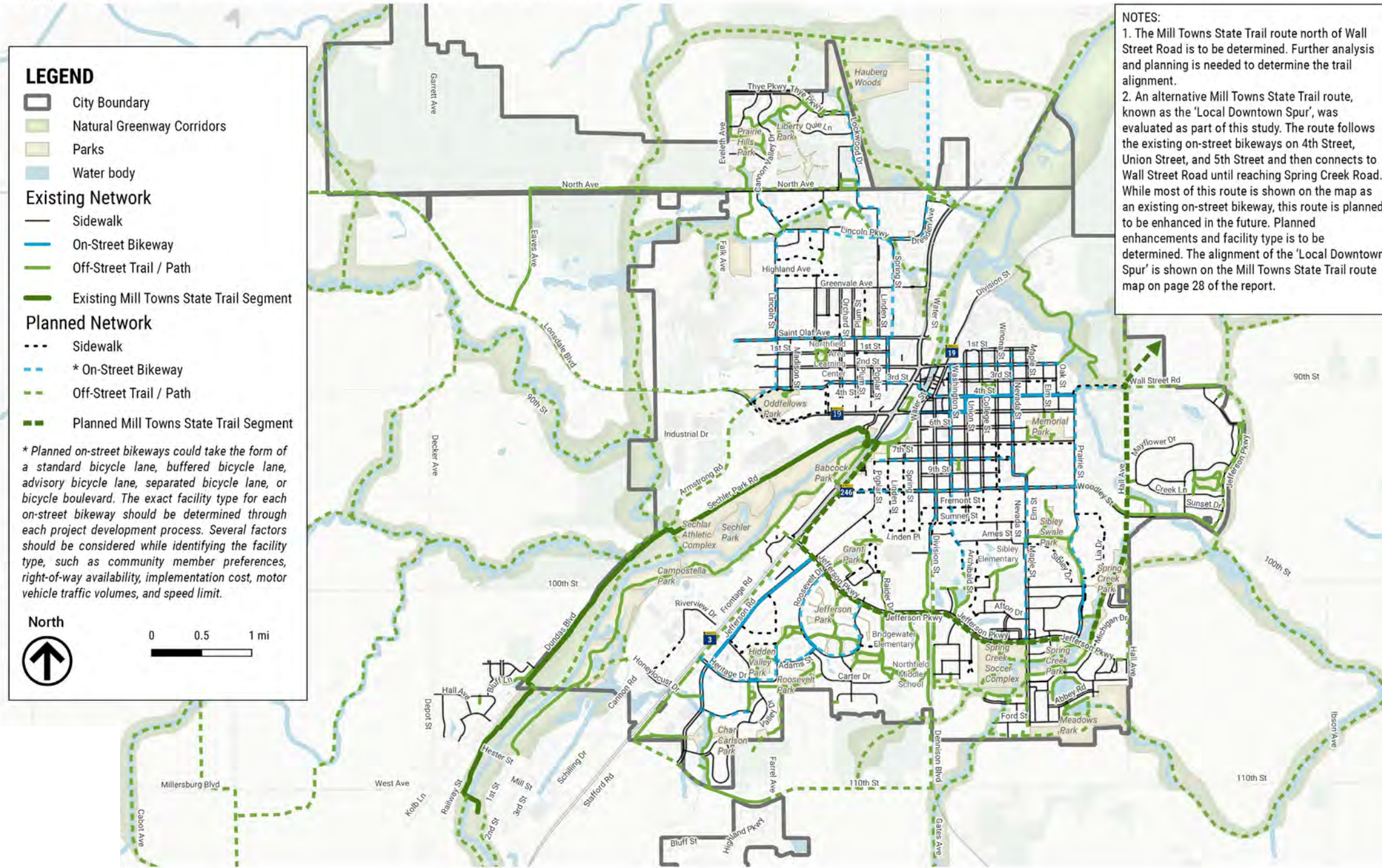
Achieving the 'big-idea' vision for the Northfield Cannon River Regional Park Experience is greatly dependent on connecting your riverfront parks, Downtown District and other signature destinations with an easily accessible network of pedestrian, bicycle and water-based trails.

LOCAL AND REGIONAL TRAIL SYSTEM

NORTHFIELD'S CANNON RIVER REGIONAL PARK EXPERIENCE



Northfield Planned Walking and Bicycling Network



Design iconic wayfinding kiosks and signage to help orient users to amenities and destinations.



Continue to promote and enhance water activities and shoreline access as major elements of the Cannon River 'Water Trail'



Where possible, use boardwalks and bridges to add interest and allow for intimate and unique river experiences.



Insure that all elements of the Local and Regional Trail System meet universal accessibility guidelines