



Ash Trees of Northfield



Central Park



Way Park



Jefferson Park

Total number of trees in the
City of Northfield Inventory
(Boulevard right of way and manicured areas
within parks)

12,037

Number of Ash trees in the
City of Northfield Inventory

1292

Number of Ash trees in public spaces being
treated by the City of Northfield and residents

140

Number of trees being removed and replaced
with MN DNR Shade Tree Bonding Grant

2024-2027

200

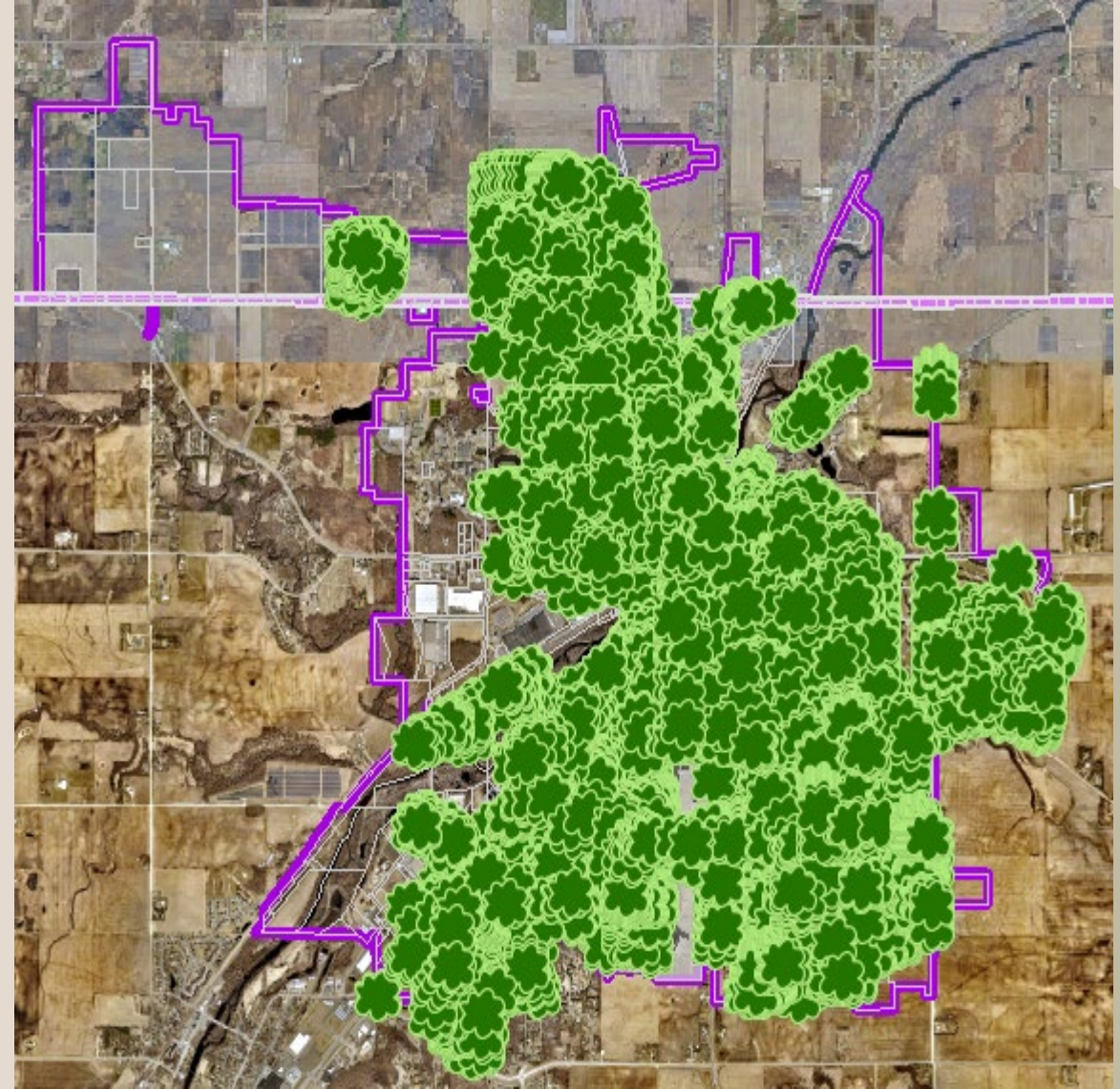
Number of Trees which will need removal in
the next 1 to 5 years

952

Approximate Cost of Removal: \$575,000

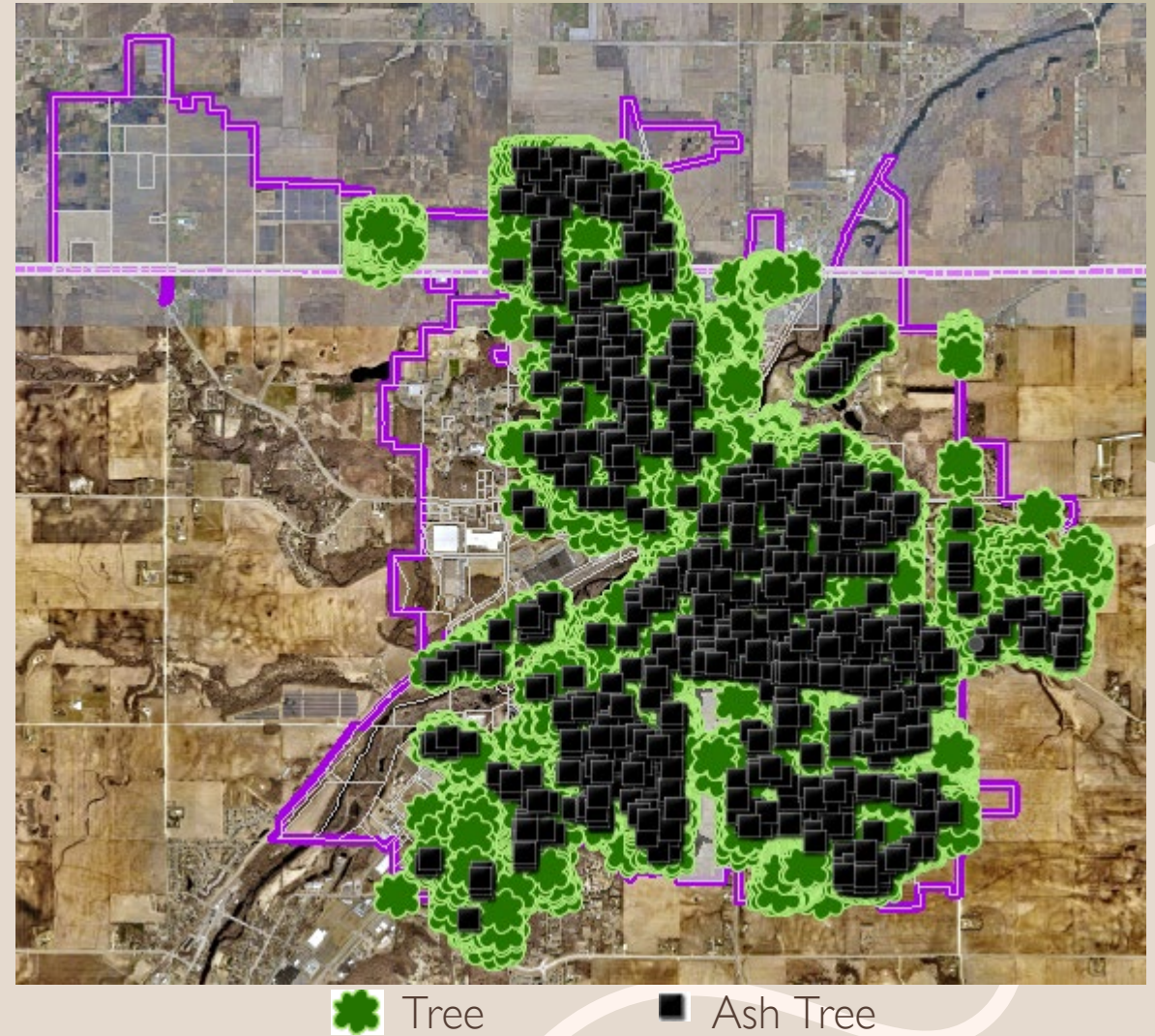
Total number of trees in the
City of Northfield Inventory
(Boulevard right of way and manicured
areas within parks)

12,037

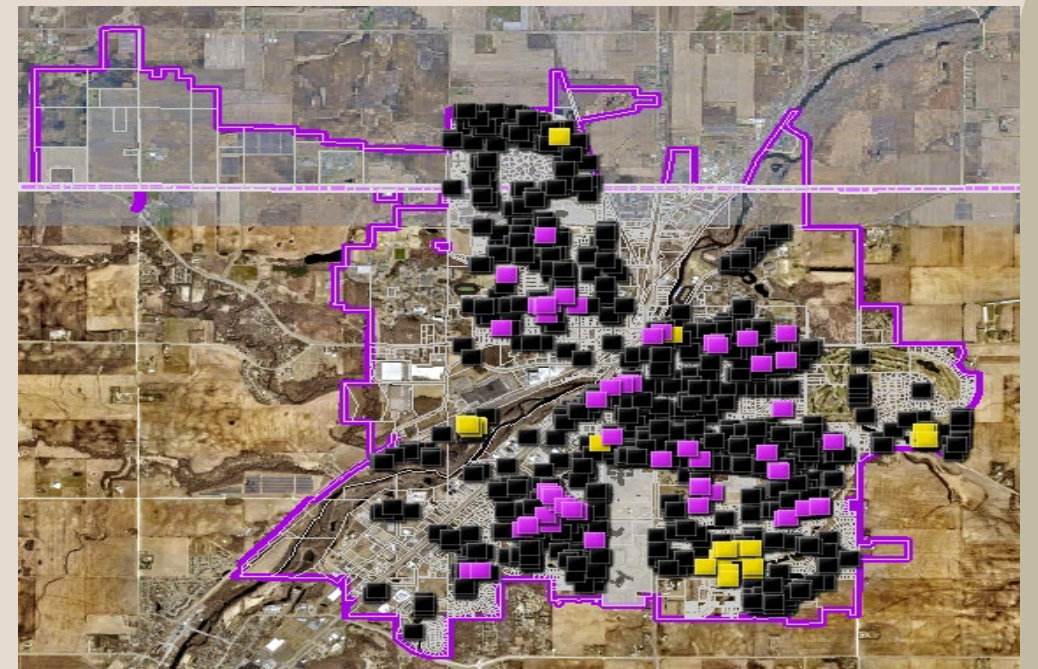


Number of Ash trees in the
City of Northfield Inventory
1292

There are also approximately 50-100
additional Ash trees in the woodland areas
in the parks not included in this number.



Number of Ash trees in public spaces
being treated by the City of Northfield
and residents
140



■ Ash Trees ■ 2023 Treatments ■ 2024 Treatments

A discount program for the protection of the Ash trees through Rainbow Treecare was offered to the residents during the last two growing seasons.

Northfield Discount Program for Emerald Ash Borer Prevention

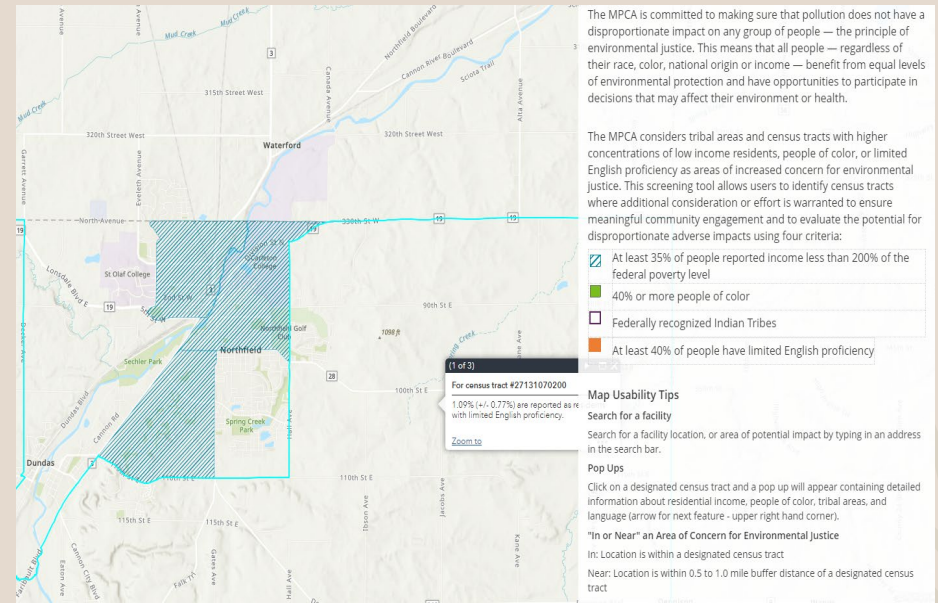
Due to the presence of emerald ash borer (EAB), the City of Northfield has chosen Rainbow Treecare as their contractor to treat public ash trees. This includes trees in city parks. A citywide discount is being offered to your community for trees on private property and along the boulevard that are at least 10" in diameter and in good physical condition.

City of Northfield
Minnesota

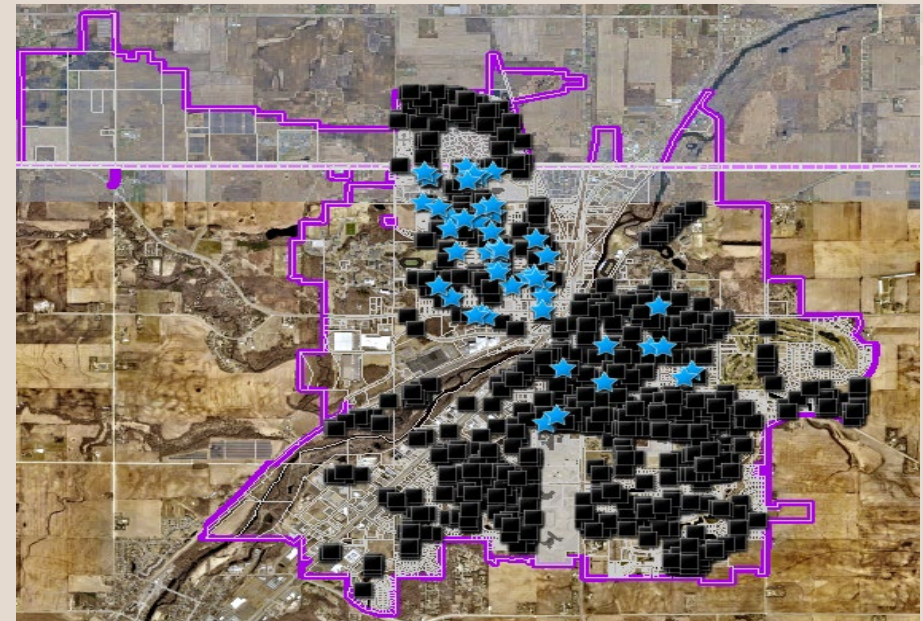
[Request a Consultation](#)

UNPROTECTED ASH TREES | PROTECTED ASH TREES

Number of trees being removed and replaced with MN DNR Shade Tree Bonding Grant 2024-2027
200



MPCA Environmental Justice Area (August 2023)



★ 2024 Shade Tree Bonding Grant (50 trees)

Number of Ash trees
in public spaces which
will need removal in
the next 5 years
952

Approximate Cost of Removal:
\$575,000

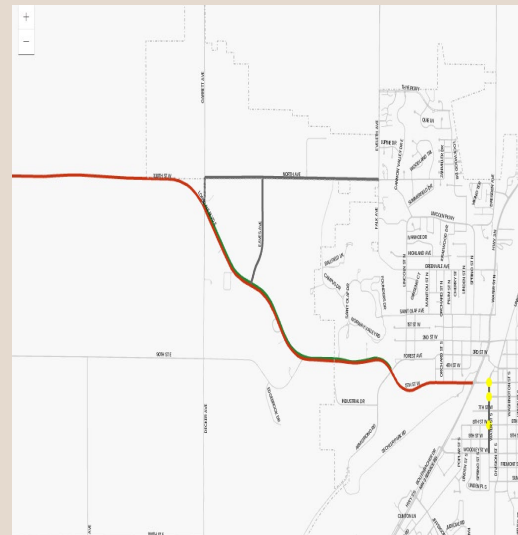
Ash trees are currently removed
during street construction projects if
they are under 13" in DBH
regardless of their health or if they
are rated as a 3 or under by the
Arborist working with the
contractor.



2025 Street Construction Project
Number of Ash Trees in Area: 6



2026 Street Construction Project
Number of Ash Trees in Area: 45



2027 Street Construction Project
Number of Ash Trees in Area: 1



2028 Street Construction Project
Number of Ash Trees in Area: 30



thank you

SHELLEY EVANSON

507-645-3037

Shelley.Evanson@northfieldmn.gov

HORTICULTURIST

ISA CERTIFIED ARBORIST[®], MN-5001A

MNLA-CP

