



2026 Mill & Overlay and Mill Towns Trail Improvements Project

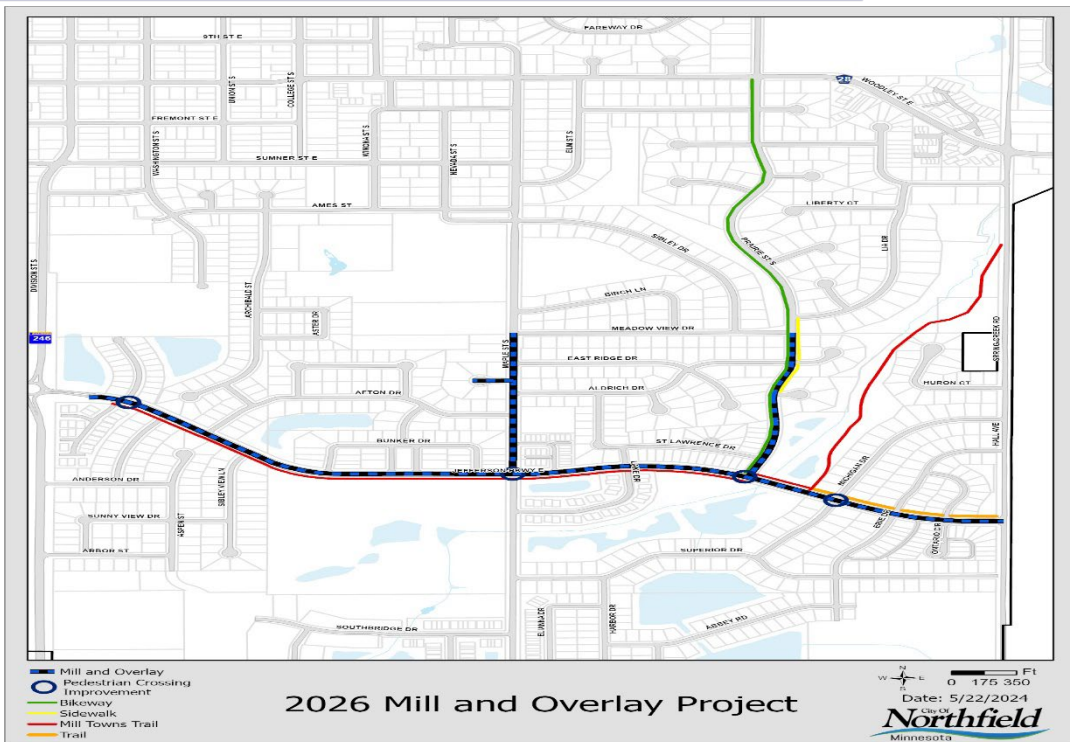
CITY COUNCIL MEETING
ORDERING PREPERATION OF
FEASIBILITY REPORT
6/4/2024

Tonight's Outline



- Project Location
- Project Scope
- What is a Mill and Overlay?
- Walking / Biking / Pedestrian Improvements
- Project Process
- Tonight's Action Items
- Questions / Comments

Project Overview

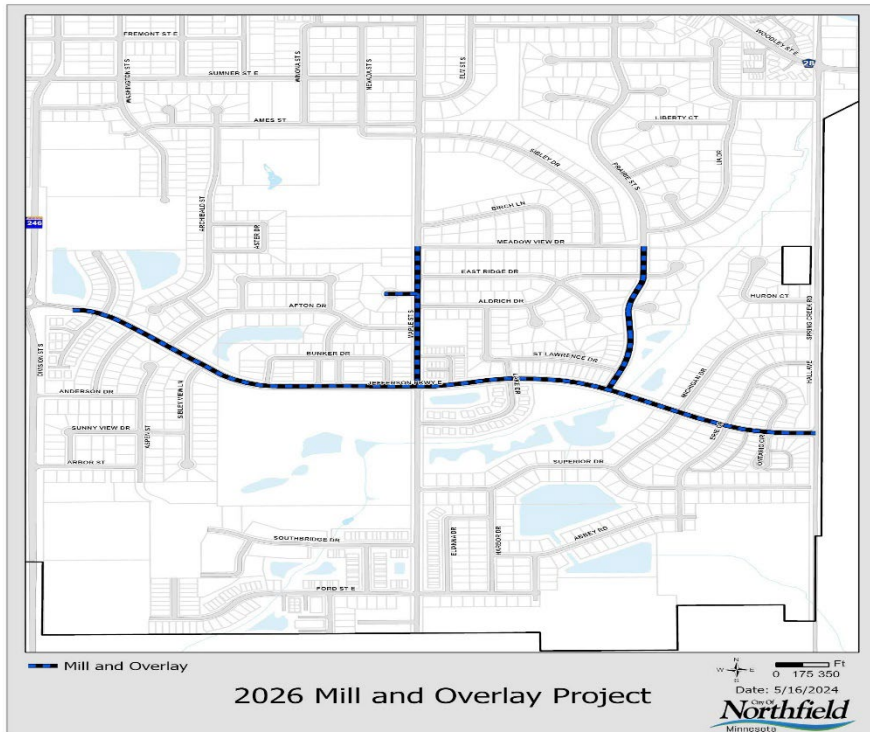


Project Scope



- 2" Pavement Mill and Overlay
- Concrete Curb and Gutter Spot Repairs
- Sidewalk Spot Repairs and ADA Upgrades to Existing Pedestrian Facilities
- Storm Sewer, Sanitary Sewer, and Water Valve Adjustments / Rehabilitations
- Walking / Biking / Pedestrian Improvements

Mill and Overlay



- Maple Street (Meadow View Dr. to Jefferson Pkwy.)
- Maple Court
- Prairie Street (Meadow View Dr. to Jefferson Pkwy.)
- Jefferson Parkway (Division St. to Spring Creek Rd.)

What is a Mill and Overlay?



- A Mill & Overlay project is a street rehabilitation method where the top layer of pavement (~2") is removed and a new layer of bituminous pavement is re-installed
- This is not a reconstruction project which is much more intrusive and much more expensive
- Impacts to residents' and business access is minor
- Pavement condition and traffic volumes show the streets in the project area will benefit from a mill & overlay and the rehabilitation will extend the street's pavement life
- Extends the service life of the road by 15 – 20 years

Mill and Overlay



Adopted Complete Streets Policies (since 2009)

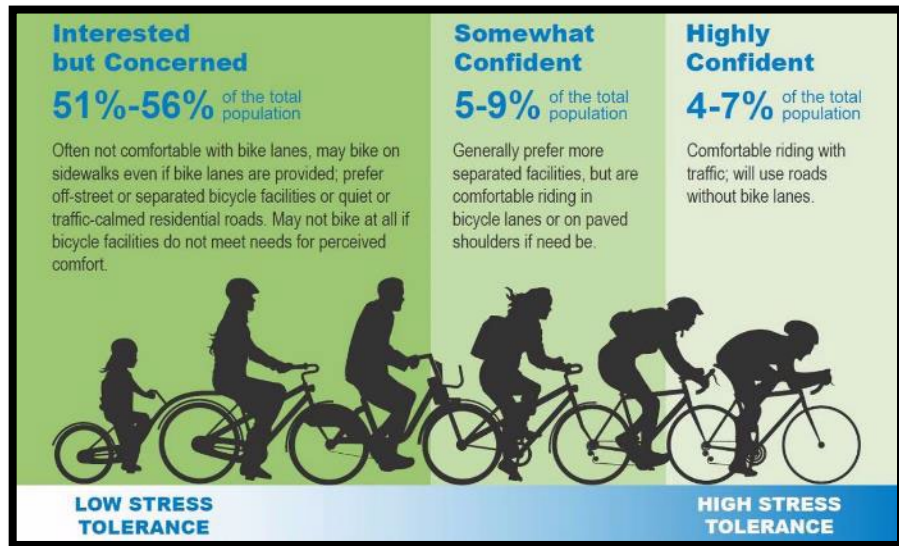


- 2009: Safe Routes to School Plan. Calls for improvements including filling sidewalk gaps, crossing signals, and the roundabout
- 2012: Complete Streets Policy. Policy to include bike, walk and roll improvements to annual street projects
- 2019: Bike, Pedestrian and Trail system plan update (Toole Design)
- 2020: Council adopted gas and electric utility franchise fees primarily to replace special assessments on street projects and to allow greater flexibility to implement goals of the Bike, Pedestrian and Trail system plan update
- 2022: Northfield adopts a plan for a safe and connected system of facilities for the entire community (Alta) including direction for implementation in 5-year CIP scoping of projects

Northfield Biking & Walking Goals



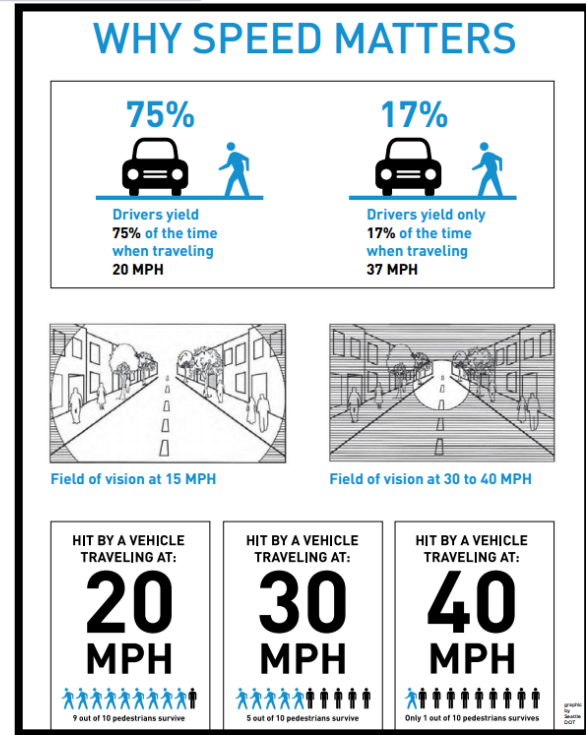
- Cohesive network which allows people to choose how to travel to where they need to go
- Safe routes which separate motor vehicles from people walking, biking and rolling
- Direct connections to minimize distance and obstacles for people biking and walking
- Attractive places for people to ride, walk and roll in Northfield



Biking & Walking Safety



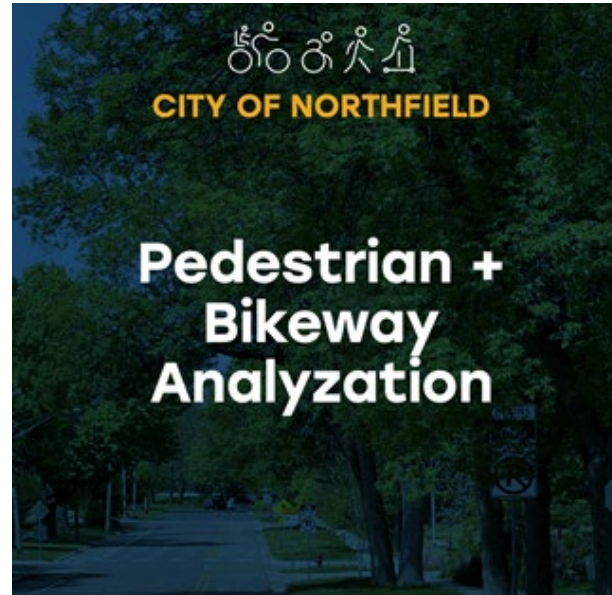
- Streets that separate space for cars, for people on bicycles, and people walking, are the safest streets for everyone
- Minimizing conflicts benefits everyone
- Bike lanes and other facilities slow traffic: Speed is the **#1** factor in all traffic deaths, in and out of cars



Walking /Biking / Pedestrian Improvements



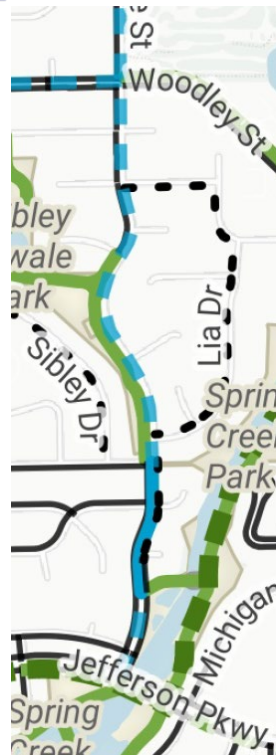
- Evaluate improvements based on the CIP Pedestrian and Bikeway Analyzation
 - Prairie Street Bikeway
 - Prairie Street Sidewalk
 - Mill Towns Trail



Walking /Biking / Pedestrian Improvements



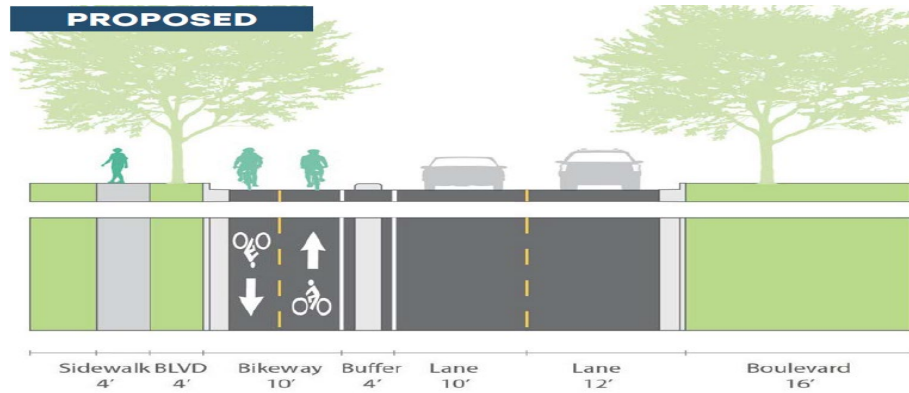
- 2018 – Pedestrian and Bike Plan
 - Prairie Street
 - Sidewalk and Bikeway



Walking /Biking / Pedestrian Improvements



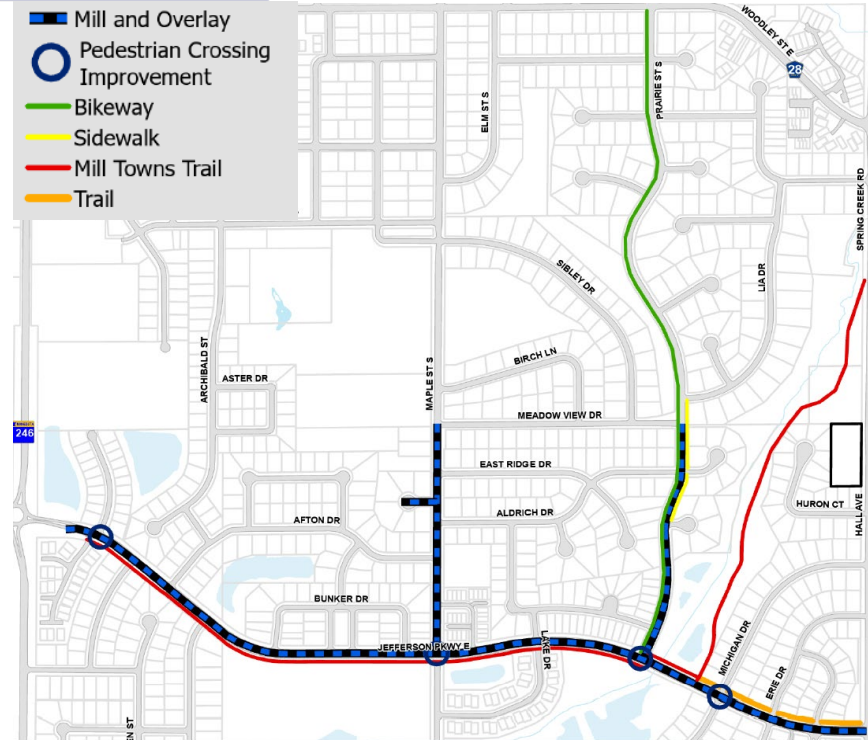
- 2022 – Alta CIP Ped + Bike Analyzation
 - Recommendation to replace striped on-street bikeway with a protected on-street bikeway (quick build)



Walking /Biking / Pedestrian Improvements



- Prairie Street Bikeway (Woodley St. to Jefferson Pkwy.)
- Prairie Street Sidewalk (Prairie View Ct. to Lia Dr.)
- Jefferson Parkway Trail (Prairie St. to Spring Creek Rd.)
- Mill Towns Trail (Division St. to Spring Creek Rd.)

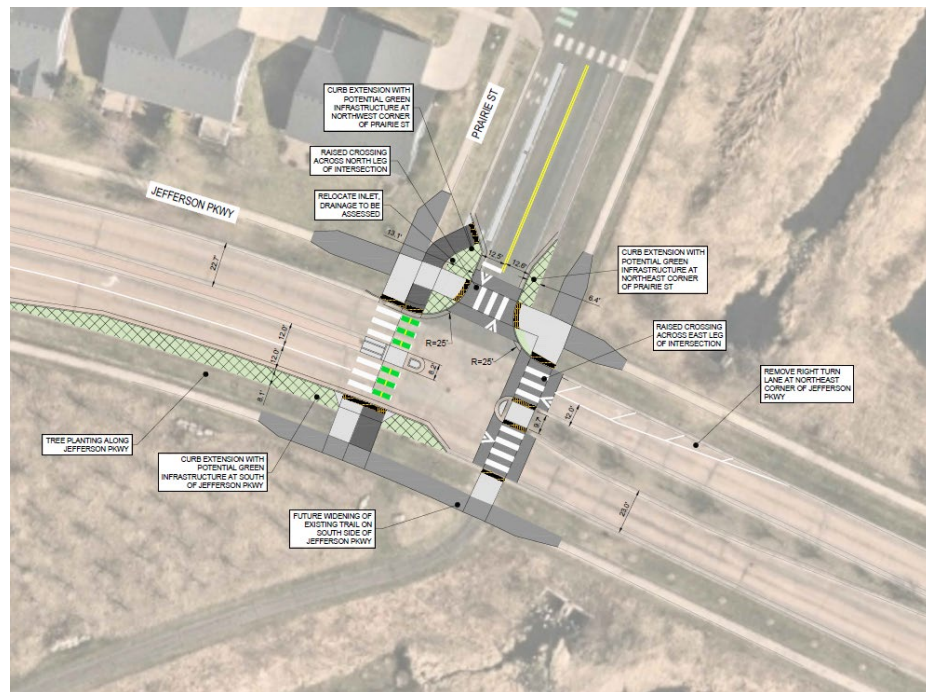


- [illegible]

Intersection Improvements



- **Jefferson Pkwy. E & Prairie St.**
 - Alta Recommendation:
Raised crossing across north and east leg of intersection; curb extension on northeast corner and on Jefferson Parkway across the south end of intersection; consider green infrastructure



Intersection Improvements



- **Jefferson Pkwy. E & Michigan Dr.**
 - Alta Recommendation: Raised crossing across Jefferson Pkwy (or cut through median at street-level and provide curb ramps from Jefferson Pkwy to side path), RRFB; curb extensions, extend median and shorten left turn lane; consider green infrastructure in curb extensions and tree planting



Intersection Improvements



- Jefferson Pkwy. E & Washington St. S
 - Alta Recommendation: Median refuge island and marked crosswalk on southeast leg; curb cuts connecting trail on south side of Jefferson Pkwy to sidewalk on north side



Intersection Improvements



- **Jefferson Pkwy. E & Maple St.**
 - An Intersection Control Evaluation is being conducted at this intersection
 - The Feasibility report include potential improvements from intersection study

Project Process



June 4, 2024	Order preparation of Feasibility Report
June 18, 2024	Approve Professional Services Agreement
April 16, 2025	1 st Neighborhood Meeting
May 21, 2025	Discussion of Draft Feasibility Report
June 11, 2025	2 nd Neighborhood Meeting
August 4, 2025	Accept Feasibility Report and Authorize Preparation of Plans and Specifications
November 18, 2025	Publish Street Recon Plan Hearing Ad in Northfield News
December 2, 2025	Public Hearing – 5-Year Street Reconstruction Plan and Adoption of Plan
January 14, 2026	3 rd Neighborhood Meeting
February 3, 2026	Approve Plans and Order Advertisement for Bids
February 11, 18, 25, 2026	Publish Ad for Bid in Northfield News
March 5, 2026	Bid Opening – 2:00 P.M.
March 17, 2026	Accept Bids and Award Contract
May 2026	Property Owner Meetings
May – October, 2026	Construction
July 2027	Accept Improvements and Authorize Final Payments

Action Tonight



Consideration of Resolution 2024-XXX

Ordering Preparation of Feasibility Report for the 2026
Mill & Overlay and Mill Towns Trail Improvements Project



Questions?

[https://www.northfieldmn.gov/1638/2026
-Mill-and-Overlay-Mill-Towns-Trail-I](https://www.northfieldmn.gov/1638/2026-Mill-and-Overlay-Mill-Towns-Trail-I)