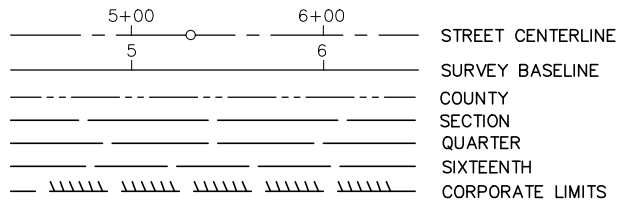
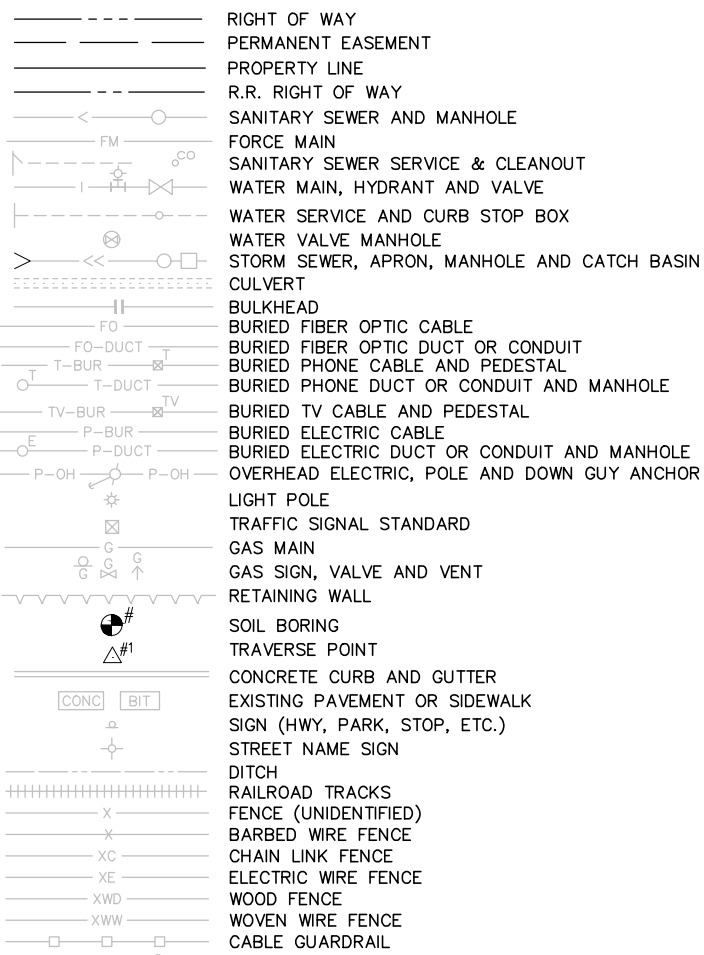


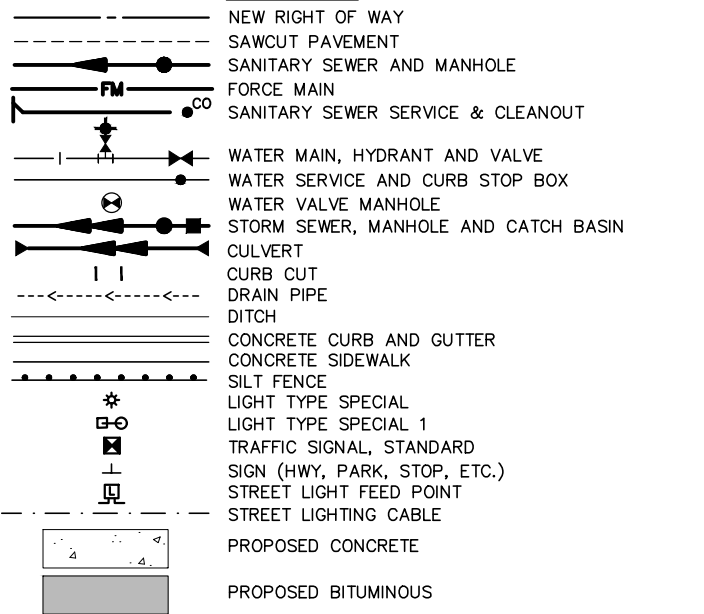
LEGEND



EXISTING



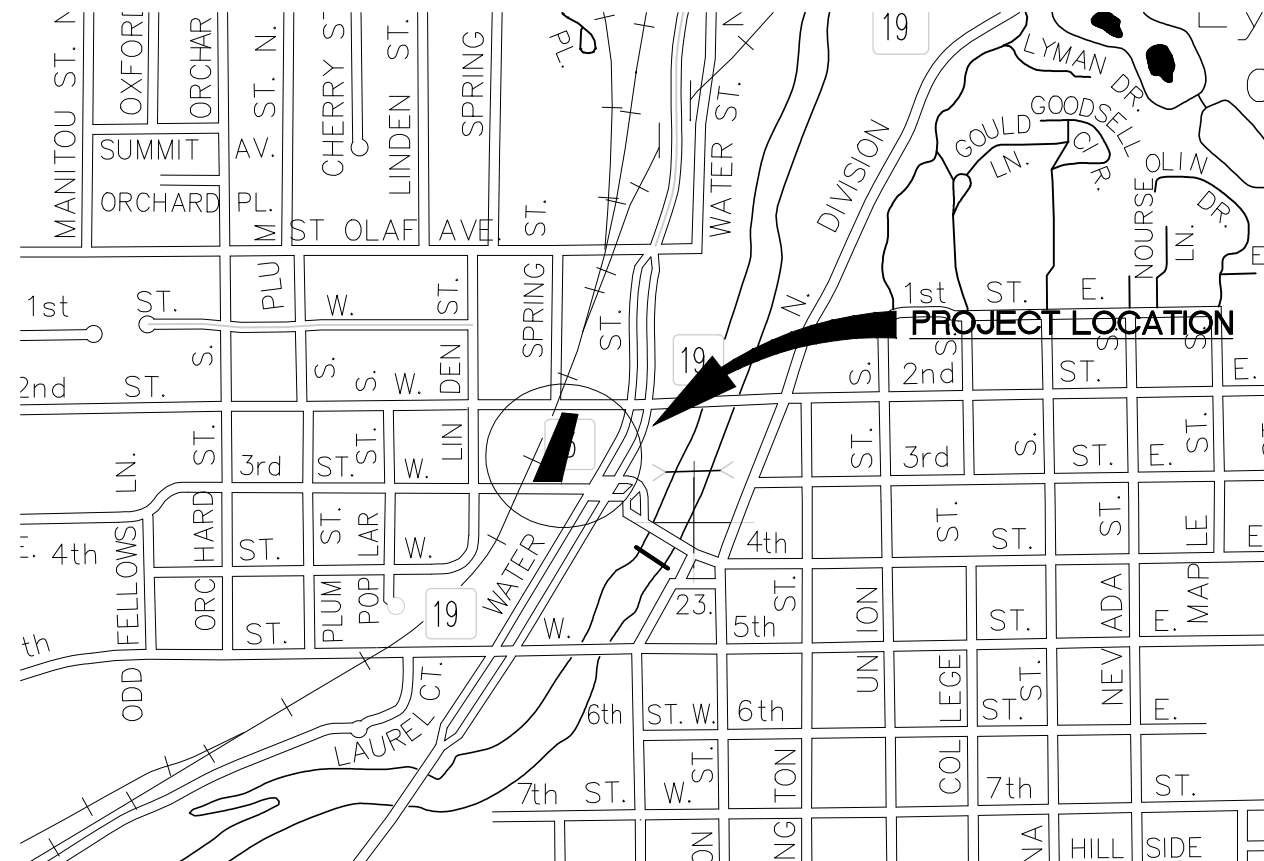
PROPOSED



CITY OF NORTHFIELD, MINNESOTA

CONSTRUCTION PLANS FOR SIDEWALK, PARKING LOT AND STALLS, AND CONCRETE CURB AND GUTTER HISTORIC DEPOT AND TRANSIT HUB IMPROVEMENTS

CITY PROJECT NO.XXXX



GOVERNING SPECIFICATIONS
THE 2016 EDITION OF THE MINNESOTA DEPARTMENT OF TRANSPORTATION "STANDARD SPECIFICATIONS FOR CONSTRUCTION" SHALL GOVERN EXCEPT AS MODIFIED BY THE SPECIFICATIONS FOR THIS PROJECT.
THE 2016 EDITION OF "STANDARD CONTRACT DOCUMENTS AND TECHNICAL SPECIFICATIONS FOR UTILITY AND STREET CONSTRUCTION FOR CITY OF NORTHFIELD, MINNESOTA"

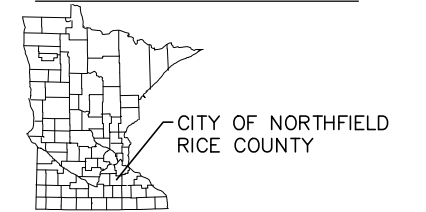
ALL TRAFFIC CONTROL DEVICES AND SIGNING SHALL CONFORM TO THE MMUTCD, INCLUDING "FIELD MANUAL FOR TEMPORARY TRAFFIC CONTROL ZONE LAYOUTS", - CURRENT EDITION.

INDEX

SHEET NO.	DESCRIPTION
1	TITLE SHEET
2	EXISTING CONDITIONS, REMOVALS, AND ESTIMATED QUANTITIES
3	TYPICAL SECTIONS
4	DETAILS
5	SITE, SIGNING AND STRIPING, AND LIGHTING PLAN
6	SITE PLAN- SPOT ELEVATIONS
7	PROPOSED UTILITIES
8	PLAN AND PROFILE
9-10	CROSS SECTIONS

THIS PLAN CONTAINS 10 SHEETS.

PROJECT LOCATION



RECOMMENDED FOR APPROVAL:

CITY OF NORTHFIELD ENGINEER _____ DATE _____



I HEREBY CERTIFY THAT THIS PLAN WAS PREPARED BY ME OR UNDER MY DIRECT SUPERVISION AND THAT I AM A DULY LICENSED PROFESSIONAL ENGINEER UNDER THE LAWS OF THE STATE OF MINNESOTA.

WAYNE HOULE, PE
Date: XX/XX/XXXX Lic. No. 25057

NOTE:
THE SUBSURFACE UTILITY QUALITY INFORMATION IN THIS PLAN IS LEVEL D. THIS UTILITY QUALITY LEVEL WAS DETERMINED ACCORDING TO THE GUIDELINES OF CI/ASCE 38-02 ENTITLED "STANDARD GUIDELINES FOR THE COLLECTION AND DEPICTION OF EXISTING SUBSURFACE UTILITY DATA."

THE CONTRACTOR SHALL CALL THE GOPHER STATE ONE CALL SYSTEM AT 811 BEFORE COMMENCING EXCAVATION.



Know what's below.
Call before you dig.

FILE NO.
NF140077
1
10

Z:\KON\Nfield\140077\5-final-dsgn\51-drawings\10-civil\cod\dwg\p\inshts\NF140077TL.dwg 5/22/2019 12:08 PM csweney

LINE NO.	Item	Item Description	Unit	QUANTITIES
1	2021.501	Mobilization	LS	1
2	2104.501	Remove Concrete Curb and Gutter	LF	114
3	2104.503	Remove Concrete Walk/ Driveway Apron	SF	897
4	2104.605	Remove and Replace Bituminous Pavement	SY	89
5	2105.501	Common Excavation	CY	563
6	2105.601	Rain Garden/Drainage Swale	LS	1
7	2211.501	Aggregate Base, Class 5	TON	492
8	2357.502	Bituminous Material For Tack Coat	GALS	149
9	2360.501	Type SP 12.5 Non Wear Course Mix (2,B)	TON	204
10	2360.501	Type Sp 9.5 Wearing Course Mix (2,C)	TON	158
11	2411.601	Concrete Steps and Railing	LS	1
12	2411.618	Retaining Wall	SF	461
13	2503.601	Utility Services - Sanitary Sewer	LS	1
14	2503.601	Utility Services- Storm Sewer for Parking Lot, Rain Garden/Drainage Swale, and Depot	LS	1
15	2504.601	Utility Services- Water Service	LS	1
16	2521.501	6" Concrete Walk	SF	341
17	2521.501	4" Concrete Walk	SF	2,745
18	2521.601	6" Concrete Stoop	SF	29
19	2531.501	Concrete Curb And Gutter Design B612	LF	365
20	2531.501	Concrete Curb And Gutter Design B618	LF	118
21	2531.501	Concrete Curb And Gutter Design B612- Modified	LF	376
22	2531.507	8" Concrete Driveway Pavement	SY	34
23	2545.511	Pedestrian Light	EA	8
24	2545.511	Parking Lot Light	EA	3
25	2545.523	2" PVC Conduit	LF	499
26	2563.601	Traffic Control	LS	1
27	2575.505	Sodding, Type Lawn	SY	1,044
28	2575.601	Erosion Control	LS	1
29	2582.601	Pavement Markings & Signage	LS	1

GENERAL NOTES

- ALL EXISTING DRIVEWAYS, STREET SURFACING, SIDEWALKS, AND CURB AND GUTTER SHALL BE REMOVED TO THE REMOVAL LIMITS MARKED IN THE FIELD BY THE ENGINEER UNLESS OTHERWISE NOTED ON THE PLANS. ALL CONCRETE AND BITUMINOUS SHALL BE SAW CUT PRIOR TO REMOVING. ALL CONCRETE TO BE SAW CUT TO THE NEAREST JOINT. ALL SAW CUTS SHALL BE INCIDENTAL TO REMOVAL ITEMS.
- THE CONTRACTOR SHALL PROVIDE AND PLACE TRAFFIC CONTROL SIGNAGE FOR WORK WITHIN 2ND STREET AND 3RD STREET AND ALSO FOR ANY SIDEWALK CLOSURES. CONTRACTOR TO PROVIDE TRAFFIC CONTROL PLAN TO ENGINEER FOR APPROVAL MINIMUM 7 DAYS BEFORE BEGINNING WORK.
- THE CONTRACTOR SHALL PROTECT THE EXISTING SANITARY SEWER AND WATER SERVICES TO THE HISTORIC NORTHFIELD DEPOT.
- THE CONTRACTOR SHALL STRICTLY CONFINE ALL CONSTRUCTION ACTIVITIES TO THE CONSTRUCTION LIMITS.
- ALL KNOWN UTILITIES ARE SHOWN ON THE PLAN, ADDITIONAL UTILITIES MAY BE PRESENT WITHIN THE CONSTRUCTION LIMITS. IT IS THE CONTRACTOR'S RESPONSIBILITY TO LOCATE AND PROTECT EXISTING UTILITIES.
- RETAINING WALL LOCATION AND HEIGHT WILL BE DETERMINED IN THE FIELD BY THE ENGINEER. SEE CROSS SECTIONS FOR APPROXIMATE WALL HEIGHT.
- THE CONTRACTOR SHALL VERIFY ALL WATER MAIN, STORM, AND SANITARY THAT CONNECT TO EXISTING LOCATIONS AND ELEVATIONS PRIOR TO CONNECTION. THE CONTRACTOR SHALL NOTIFY THE ENGINEER OF ANY DEVIATIONS FROM PLAN. NO ADDITIONAL COMPENSATION SHALL BE GIVEN FOR ELEVATION AND/OR LOCATION CHANGES, EXCEPT THAT ADDITIONAL LENGTHS SHALL BE PAID AT UNIT BID PRICES.
- CONTRACTOR SHALL BE RESPONSIBLE FOR IMPLEMENTING THE STORM WATER POLLUTION PREVENTION PLAN (SWPPP) ON THE SITE; THIS INCLUDES, BUT IS NOT LIMITED TO, ALL SILT FENCE, INLET PROTECTION, ROCK CONSTRUCTION ENTRANCES, STREET SWEEPING, ETC. CONTRACTOR SHALL ALSO BE RESPONSIBLE FOR INSPECTING AND CLEANING ANY DEVICE RELATED TO THE SWPPP.
- ALL PROPOSED CONCRETE SIDEWALK TO BE A MINIMUM 4" THICK EXCEPT AT DRIVEWAY ENTRANCES AND PEDESTRIAN RAMPS. CONCRETE SIDEWALK AT DRIVEWAY ENTRANCES AND PEDESTRIAN RAMPS TO BE A MINIMUM OF 6" THICK.

SAWCUT, REMOVE, AND REPLACE BITUMINOUS PAVEMENT FOR SANITARY SEWER SERVICE CONNECTION; MATCH EXISTING PAVEMENT SECTION (SEE SHEET INSET D ON SHEET 3)

REMOVE EX. CURB AND GUTTER

SECOND ST W
Existing driveway opening

REMOVE EX. DRIVEWAY AND SIDEWALK

PROVIDE ROCK CONSTRUCTION ENTRANCE

Gravel road edge

INSTALL SILT FENCE (TYPE MS)

PROTECT EX. BUILDING AND CANOPY

PROVIDE ROCK CONSTRUCTION ENTRANCE

REMOVE EX. CURB AND GUTTER

REMOVE AND REPLACE EX. DRIVEWAY AND SIDEWALK

3RD ST W

SAWCUT, REMOVE, AND REPLACE BITUMINOUS PAVEMENT FOR STORM SEWER STRUCTURE; MATCH EXISTING PAVEMENT SECTION (SEE SHEET INSET D ON SHEET 3)

Z:\KONAN\Final\140077\5-final-dsnp-51-drawings\10-Civil\cod\dwg\pinshis\NF140077EXISTING.dwg 5/24/2019 1:22 PM cswaney

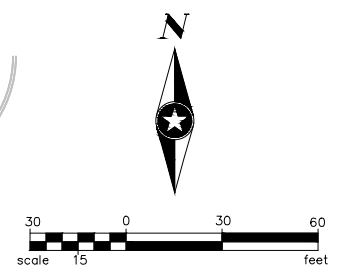
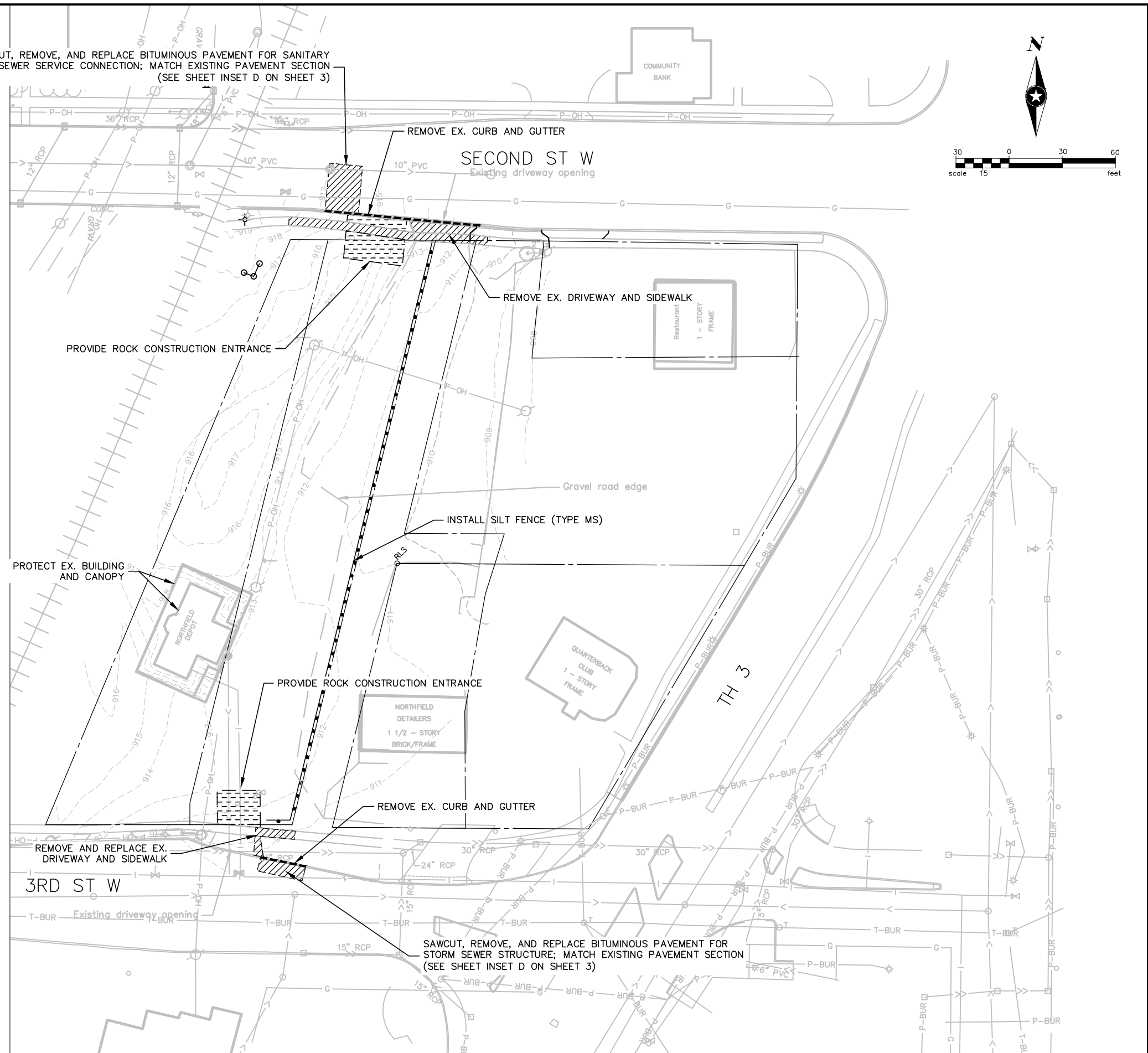
HEREBY CERTIFY THAT THIS PLAN WAS PREPARED BY ME OR UNDER MY DIRECT SUPERVISION AND THAT I AM A DULY LICENSED PROFESSIONAL ENGINEER UNDER THE LAWS OF THE STATE OF MINNESOTA.
SIGNATURE: WAYNE HOLE
DATE: _____
Lic. No. 25057



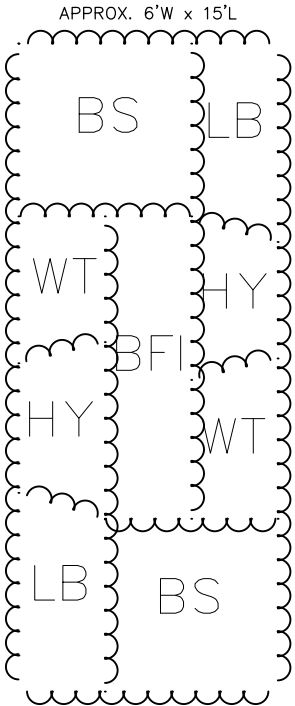
HISTORIC DEPOT AND TRANSIT HUB NORTHFIELD, MN

EXISTING CONDITIONS, REMOVALS, AND ESTIMATED QUANTITIES

FILE NO. NF140077
DATE: X/XX/XX
2
10



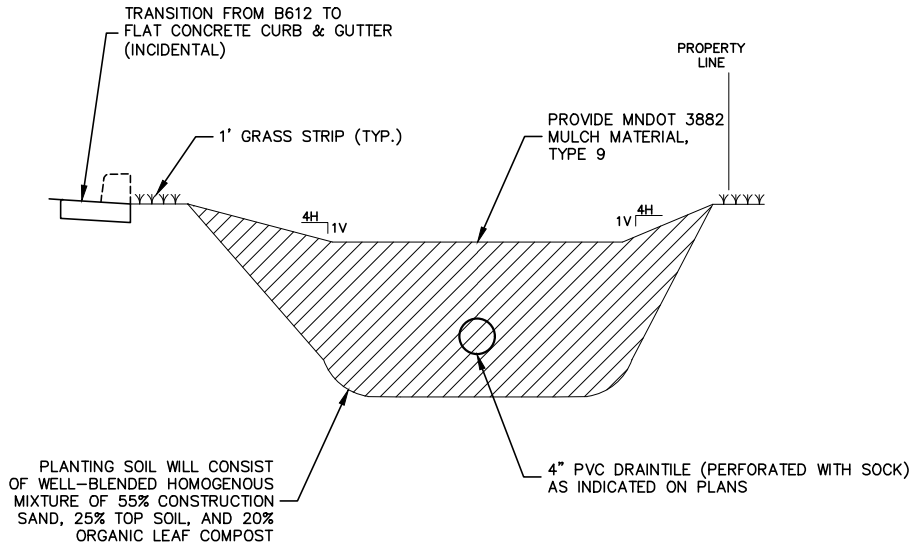
PERENNIAL RAIN GARDEN FULL SUN



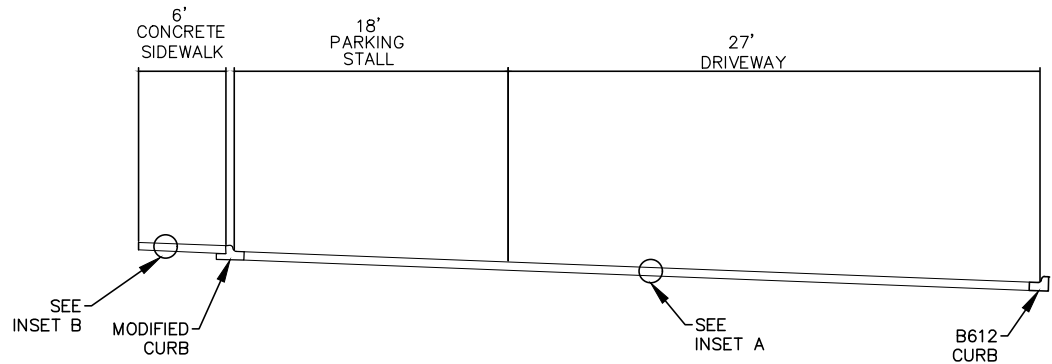
Full Sun						
Code	Type	Common Name	Botanical Name	Size	Root	Spacing
HY	15	Weed	Asclepias Tuberosa	#1	Cont.	1.5' O.C.
BFI	21	Blueflag Iris	Iris Versicolor	#1	Cont.	1.5' O.C.
WT	14	White Turtlehead	Chelone Glabra	#1	Cont.	1.5' O.C.
BS	12	Brown Eyed Susan	Rudbeckia Triloba	#1	Cont.	1.5' O.C.
LB	12	Little Bluestem	Schizachrium Scoparium	#1	Cont.	1.5' O.C.

GENERAL NOTES:
 1. NO PLANT SUBSTITUTIONS WILL BE ACCEPTED UNLESS PRIOR APPROVAL IS REQUESTED OF THE ENGINEER BY THE CONTRACTOR PRIOR TO THE SUBMISSION OF BID.
 2. PERENNIAL AND SHRUB RAIN GARDEN SHALL BE PLANTED BY THE CONTRACTOR IN 2017/2018.

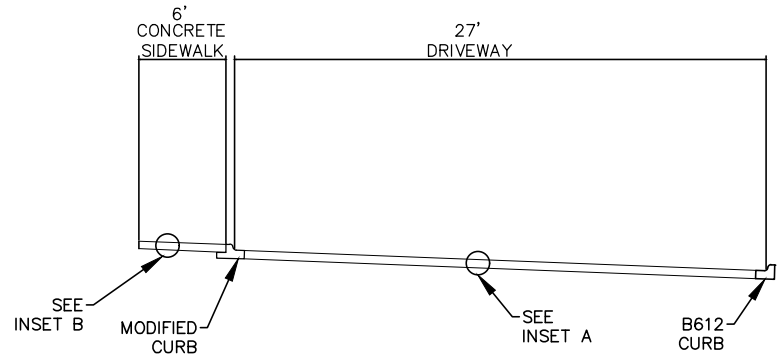
PLANTING NOTES:
 1. ALL PERENNIALS SHALL HAVE TRIANGULAR SPACING.
 2. CONTAINER GROWN PLANTS SHALL HAVE ROOTS LOOSENED AND PULLED OUT TO PREVENT PLANT FROM BECOMING ROOT BOUND.



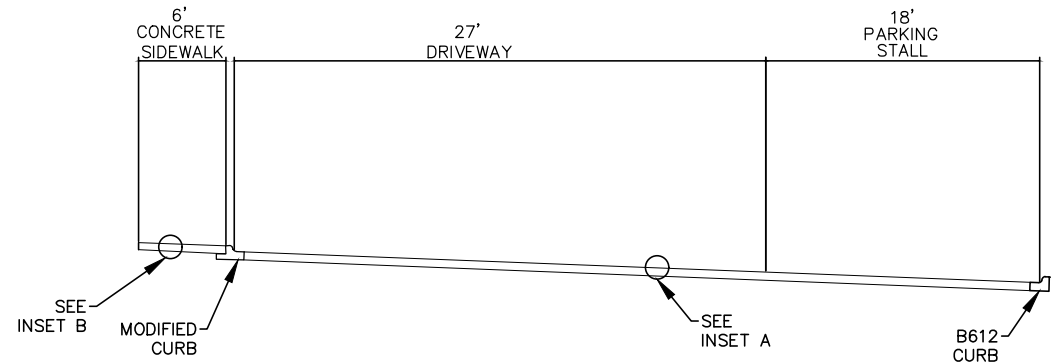
RAIN GARDEN/DRAINAGE SWALE



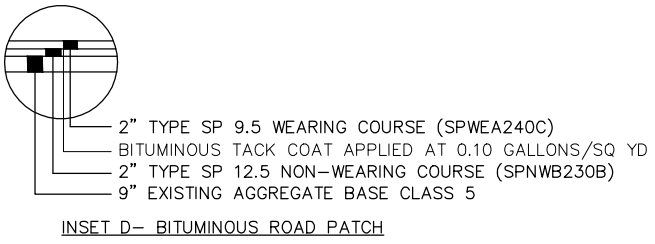
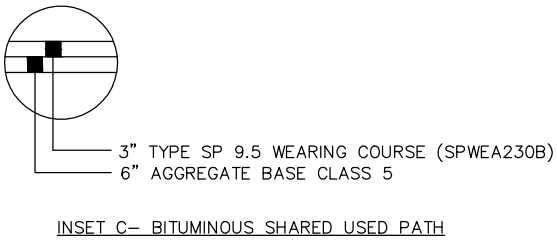
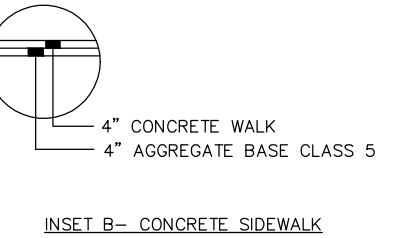
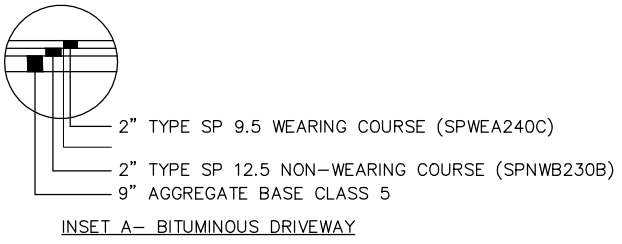
SECTION A
STA. 100+31 TO 101+19



SECTION B
STA. 101+19 TO 102+78



SECTION C
STA. 102+78 TO 103+43



DRAWN BY: AB				
DESIGNER: AB				
CHECKED BY: WH				
DESIGN TEAM	NO.	BY	DATE	REVISIONS

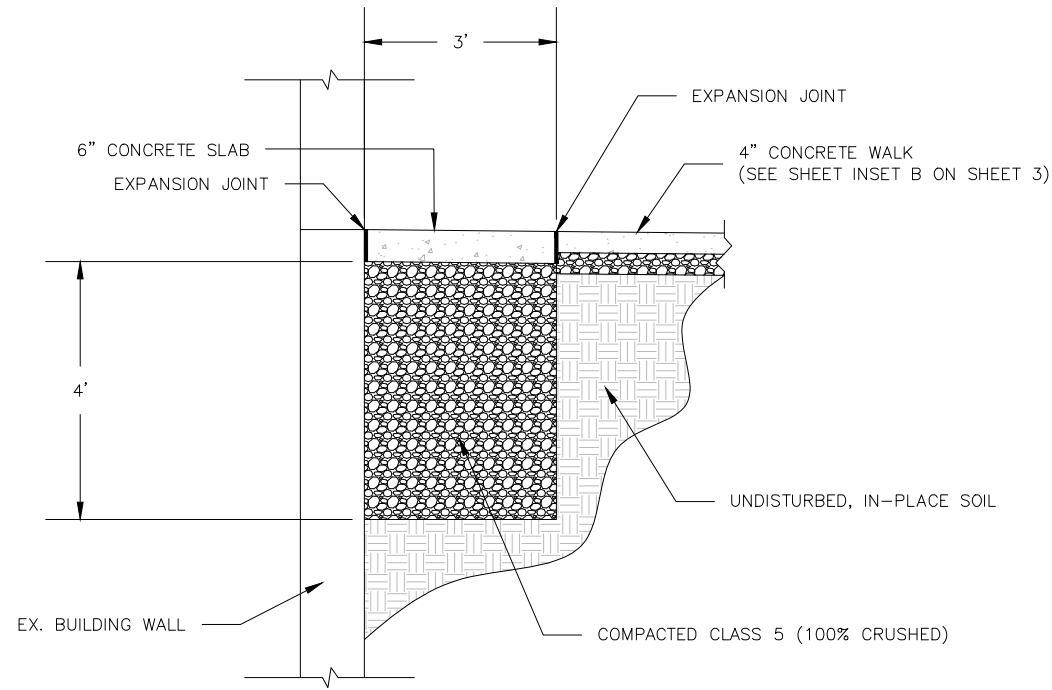
I HEREBY CERTIFY THAT THIS PLAN WAS PREPARED BY ME OR UNDER MY DIRECT SUPERVISION AND THAT I AM A DULY LICENSED PROFESSIONAL ENGINEER UNDER THE LAWS OF THE STATE OF MINNESOTA.
 SIGNATURE: WAYNE HOLE
 PRINTED NAME: WAYNE HOLE
 Lic. No. 25057



HISTORIC DEPOT
AND TRANSIT HUB
NORTHFIELD, MN

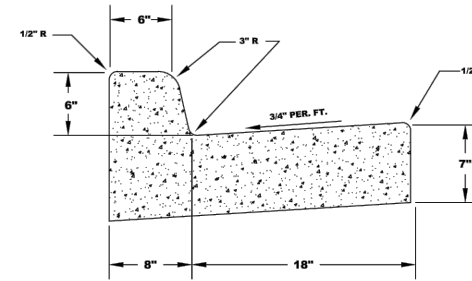
TYPICAL SECTIONS

FILE NO. NF140077	3
DATE: X/XX/XX	10



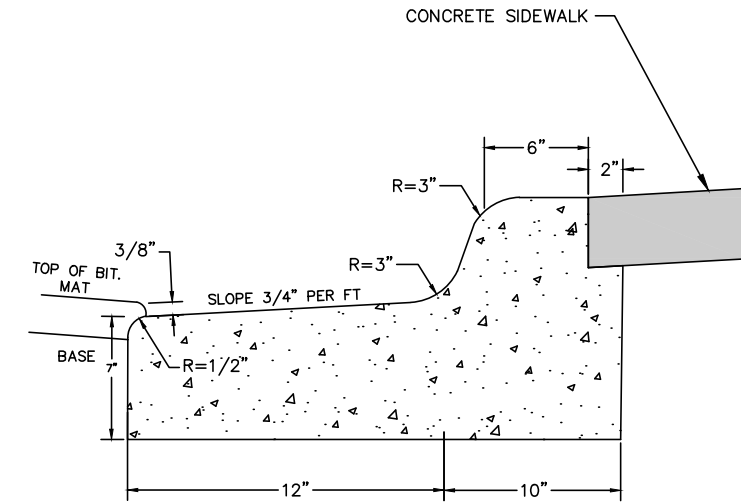
CONCRETE ENTRANCE SLAB BACKFILL DETAIL

MnDOT B618 CONCRETE CURB AND GUTTER

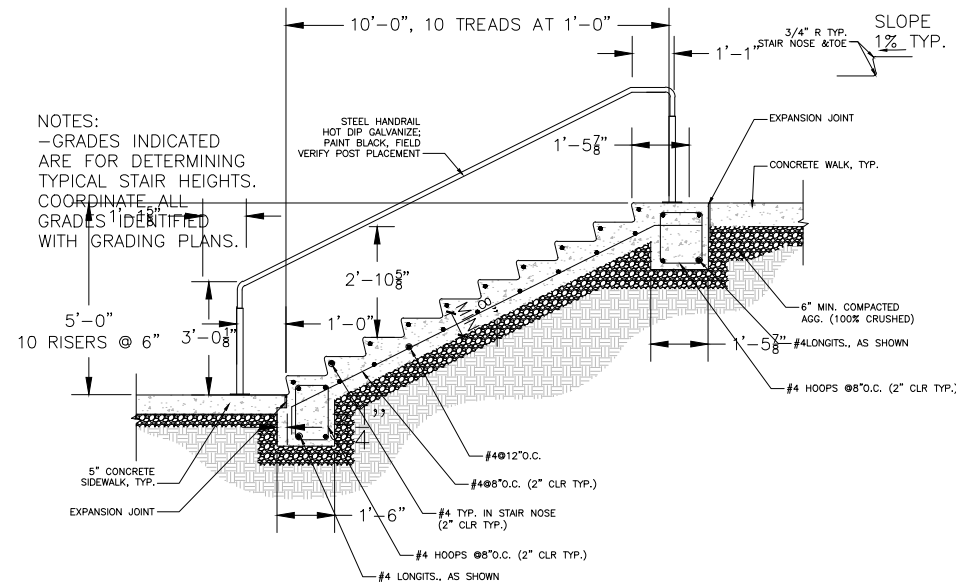


DRAWN BY: S.M.S. NOT TO SCALE UPDATED: 2011

City of **Northfield** ENGINEERING DIVISION PLATE NO. B **B618 CURB SECTION**

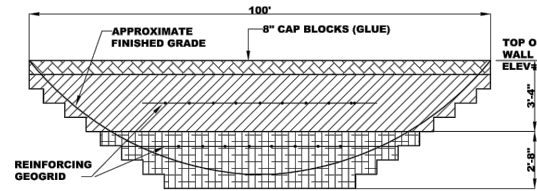


MODIFIED CURB (TIPOUT)

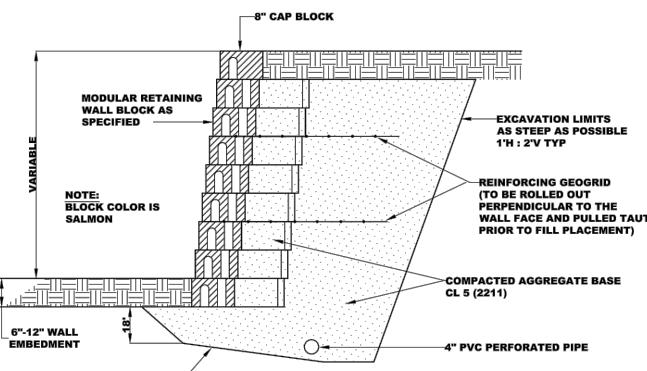


CONCRETE STEPS AND HANDRAIL DETAIL

NOTE: STAIR-STEPPING AS SHOWN IS APPROXIMATE ONLY. BUILD WALL TO MATCH EXISTING GROUND AND PROPOSED GRADES.



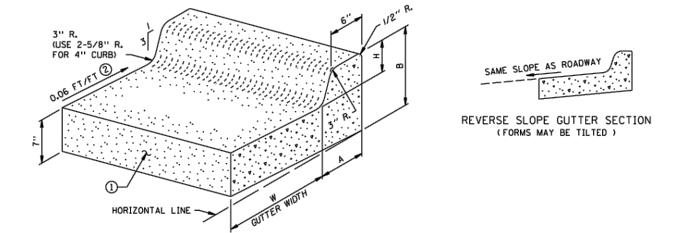
ELEVATION



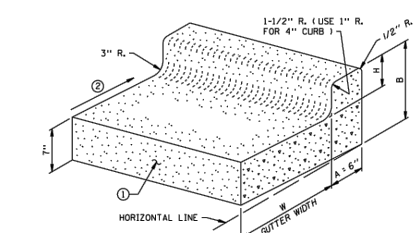
SECTION

DRAWN BY: S.M.S. NOT TO SCALE UPDATED: 2011

City of **Northfield** ENGINEERING DIVISION PLATE NO. 14 **RETAINING WALL DETAIL**



DESIGN B



DESIGN V

DESIGN B	W = 12"			W = 18"			W = 24"			W = 30"			W = 36"				
	DESIGN NO.	CONCRETE CL. YOS.	CONCRETE CL. YOS.	DESIGN NO.	CONCRETE CL. YOS.	CONCRETE CL. YOS.	DESIGN NO.	CONCRETE CL. YOS.	CONCRETE CL. YOS.	DESIGN NO.	CONCRETE CL. YOS.	CONCRETE CL. YOS.	DESIGN NO.	CONCRETE CL. YOS.	CONCRETE CL. YOS.		
4	7-3/8"	11-1/2"	B412	0.0421	23.8	B418	0.0529	18.9	B424	0.0637	15.7	B430	0.0745	13.4	B436	0.0853	11.7
6	8"	13-1/2"	B612	0.0474	21.1	B618	0.0582	17.2	B624	0.0690	14.5	B630	0.0798	12.3	B636	0.0906	11.0
8	8-5/8"	15-1/2"	B812	0.0529	18.9	B818	0.0637	15.7	B824	0.0745	13.4	B830	0.0853	11.7	B836	0.0962	10.4
9	9"	16-5/8"	B912	0.0559	17.9	B918	0.0667	15.0	B924	0.0775	12.9	B930	0.0883	11.3	B936	0.0991	10.1
10	9-3/8"	17-5/8"	B1012	0.0589	17.0	B1018	0.0697	14.4	B1024	0.0805	12.4	B1030	0.0913	11.0	B1036	0.1021	9.8

DESIGN V	W = 12"			W = 18"			W = 24"			W = 30"			W = 36"				
	DESIGN NO.	CONCRETE CL. YOS.	CONCRETE CL. YOS.	DESIGN NO.	CONCRETE CL. YOS.	CONCRETE CL. YOS.	DESIGN NO.	CONCRETE CL. YOS.	CONCRETE CL. YOS.	DESIGN NO.	CONCRETE CL. YOS.	CONCRETE CL. YOS.	DESIGN NO.	CONCRETE CL. YOS.	CONCRETE CL. YOS.		
4	6"	11-3/8"	V412	0.0396	26.3	V418	0.0504	19.9	V424	0.0612	16.4	V430	0.0720	13.9	V436	0.0828	12.1
6	6"	13-3/8"	V612	0.0426	23.5	V618	0.0534	18.7	V624	0.0642	15.6	V630	0.0750	13.4	V636	0.0858	11.7
8	6"	15-3/8"	V812	0.0457	21.9	V818	0.0565	17.7	V824	0.0673	14.9	V830	0.0781	12.8	V836	0.0889	11.3
9	6"	16-3/8"	V912	0.0472	21.2	V918	0.0580	17.2	V924	0.0688	14.5	V930	0.0796	12.6	V936	0.0904	11.1
10	6"	17-3/8"	V1012	0.0487	20.5	V1018	0.0595	16.8	V1024	0.0703	14.2	V1030	0.0811	12.4	V1036	0.0919	10.9

APPROVED MARCH 11, 1994

STATE OF MINNESOTA DEPARTMENT OF TRANSPORTATION

CONCRETE CURB AND GUTTER DESIGN B AND DESIGN V

SIGNATURE: *R.H. Carpend* ACTING STATE DESIGN ENGINEER

SPECIFICATION REFERENCE: 2531

REVISION DATE: 2-28-09

STANDARD PLATE NO.: 7100H

DRAWN BY: AB				
DESIGNER: AB				
CHECKED BY: WH				
DESIGN TEAM	NO.	BY	DATE	REVISIONS

HEREBY CERTIFY THAT THIS PLAN WAS PREPARED BY ME OR UNDER MY DIRECT SUPERVISION AND THAT I AM A DULY LICENSED PROFESSIONAL ENGINEER UNDER THE LAWS OF THE STATE OF MINNESOTA.

SIGNATURE: *Wayne Hogle* DATE: _____ Lic. No. 25057

PRELIMINARY

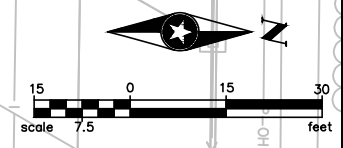
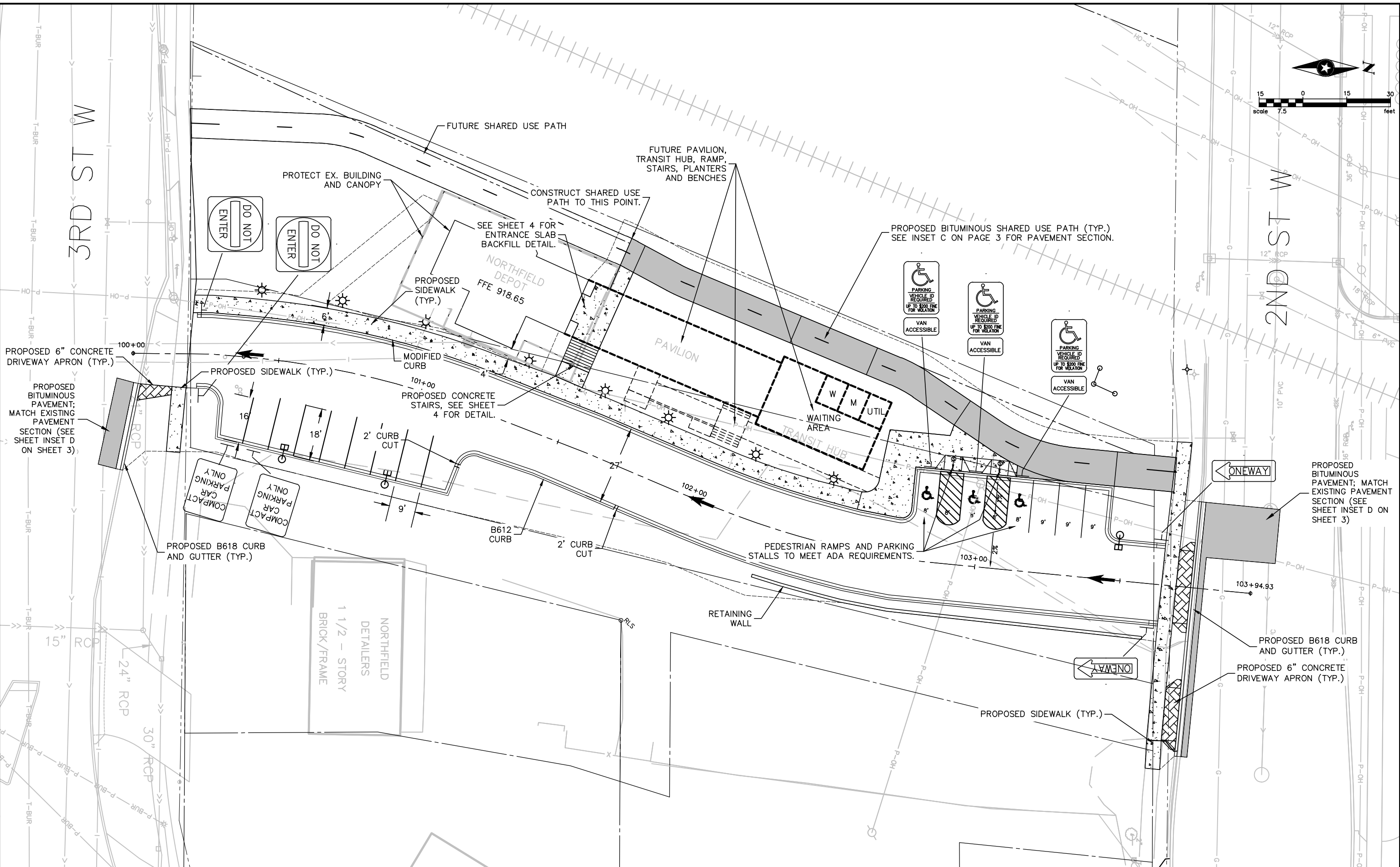
SEH PHONE: 952.912.2600 10901 RED CIRCLE DRIVE #300 MINNETONKA, MN 55343-9302 www.sehinc.com

City of **Northfield** Minnesota

HISTORIC DEPOT AND TRANSIT HUB NORTHFIELD, MN

FILE NO. NF140077	4
DATE: X/XX/XX	10

Z:\KONAN\140077\5-final-dsnp-51-drawings\10-Civil\cad\dwg_pinshts\NF140077PL.dwg 5/24/2019 1:36 PM csweney



DRAWN BY: AB
 DESIGNER: AB
 CHECKED BY: WH

NO.	BY	DATE	REVISIONS

HEREBY CERTIFY THAT THIS PLAN WAS PREPARED BY ME OR UNDER MY DIRECT SUPERVISION AND THAT I AM A DULY LICENSED PROFESSIONAL ENGINEER UNDER THE LAWS OF THE STATE OF MINNESOTA.

SIGNATURE: WAYNE HOLE
 DATE: _____
 Lic. No. 25057

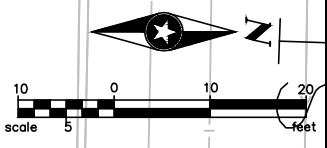
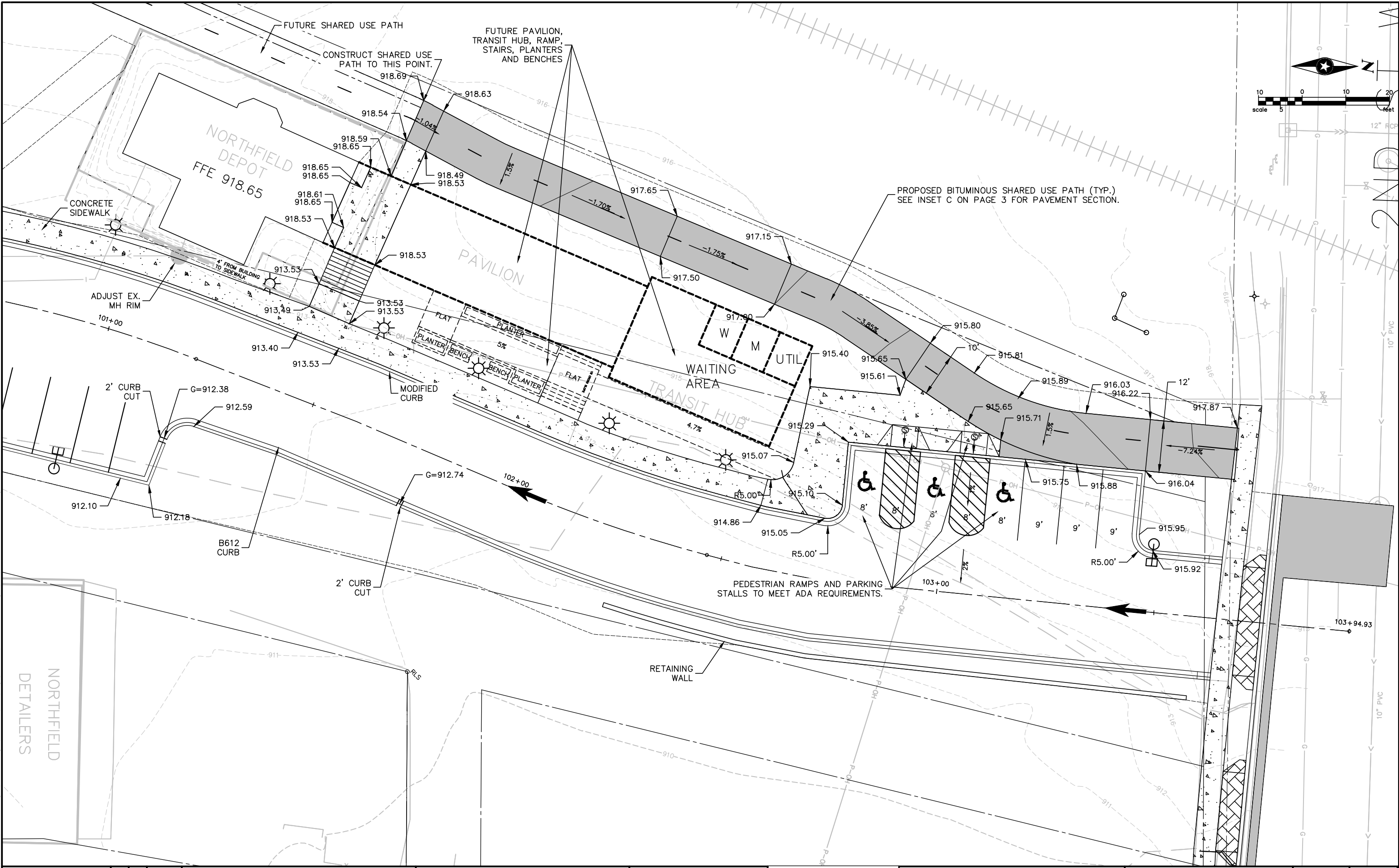
PRELIMINARY

HISTORIC DEPOT AND TRANSIT HUB
 NORTHFIELD, MN

SITE, SIGNING AND STRIPING, AND LIGHTING PLAN

FILE NO. NF140077
 DATE: X/XX/XX
5
10

Z:\KONAN\Final\140077\5-final-dsnp\5-final-dsnp\10-Civil\cad\dwg\pinshis\NF140077\PL.dwg 5/24/2019 1:36 PM csweeney



DRAWN BY:	AB			
DESIGNER:	AB			
CHECKED BY:	WH			
DESIGN TEAM	NO.	BY	DATE	REVISIONS

HEREBY CERTIFY THAT THIS PLAN WAS PREPARED BY ME OR UNDER MY DIRECT SUPERVISION AND THAT I AM A DULY LICENSED PROFESSIONAL ENGINEER UNDER THE LAWS OF THE STATE OF MINNESOTA.

SIGNATURE: WAYNE HOLE
 DATE: _____
 Lic. No. 25057

PRELIMINARY

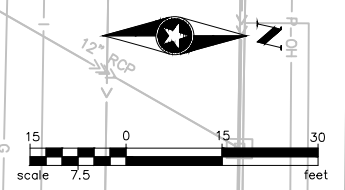
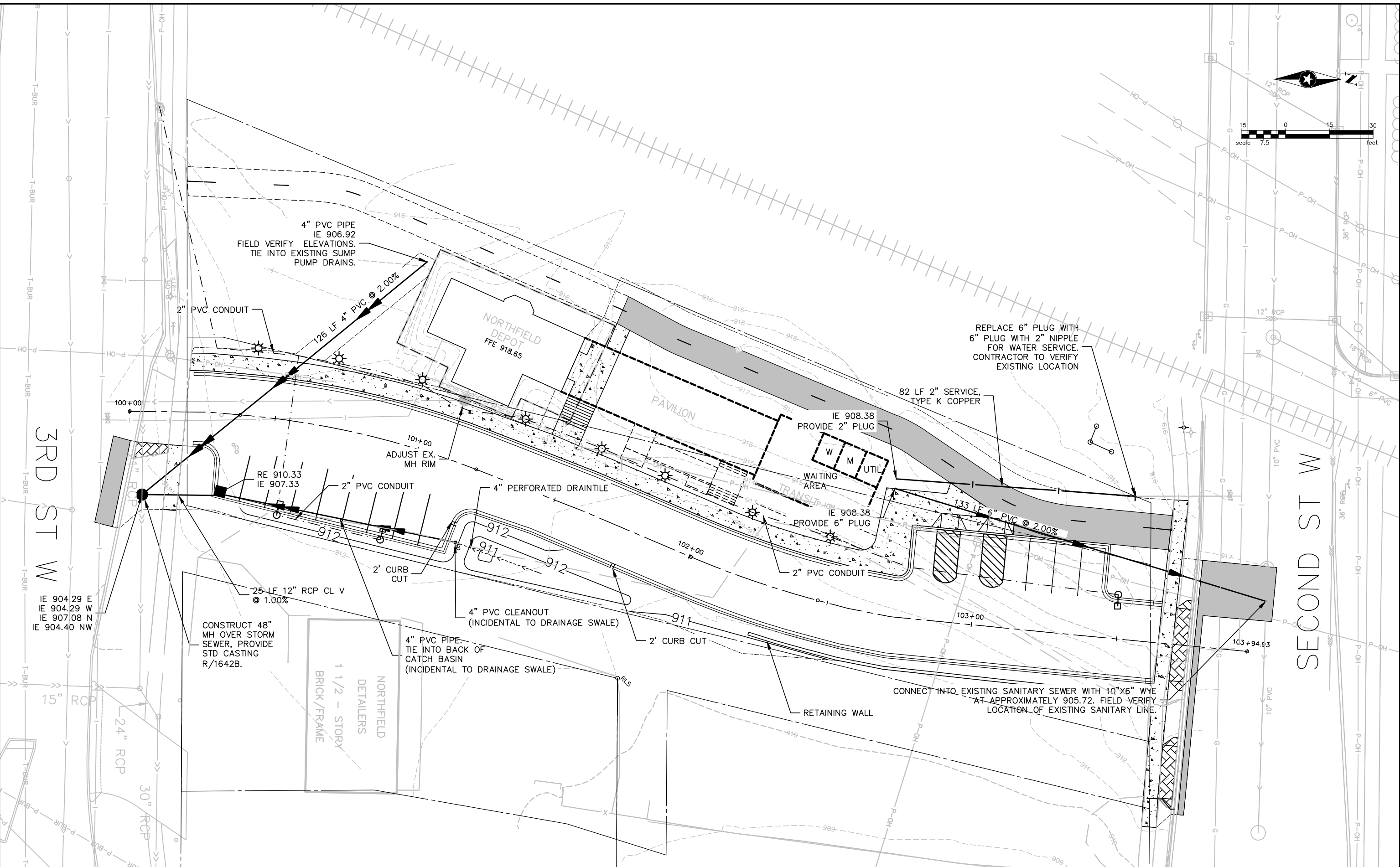


HISTORIC DEPOT AND TRANSIT HUB
 NORTHFIELD, MN

SITE PLAN- SPOT ELEVATIONS

FILE NO. NF140077
 DATE: X/XX/XX
6
10

Z:\KONAN\140077\5-final-dsnp\5-final-dsnp\10-Civil\cadd\dwg\pinshis\NF140077\UT.dwg 5/22/2019 12:37 PM csweney



DRAWN BY:	AB			
DESIGNER:	AB			
CHECKED BY:	WH			
DESIGN TEAM		NO.	BY	DATE
				REVISIONS

I HEREBY CERTIFY THAT THIS PLAN WAS PREPARED BY ME OR UNDER MY DIRECT SUPERVISION AND THAT I AM A DULY LICENSED PROFESSIONAL ENGINEER UNDER THE LAWS OF THE STATE OF MINNESOTA.

DATE: _____ Lic. No. 25057

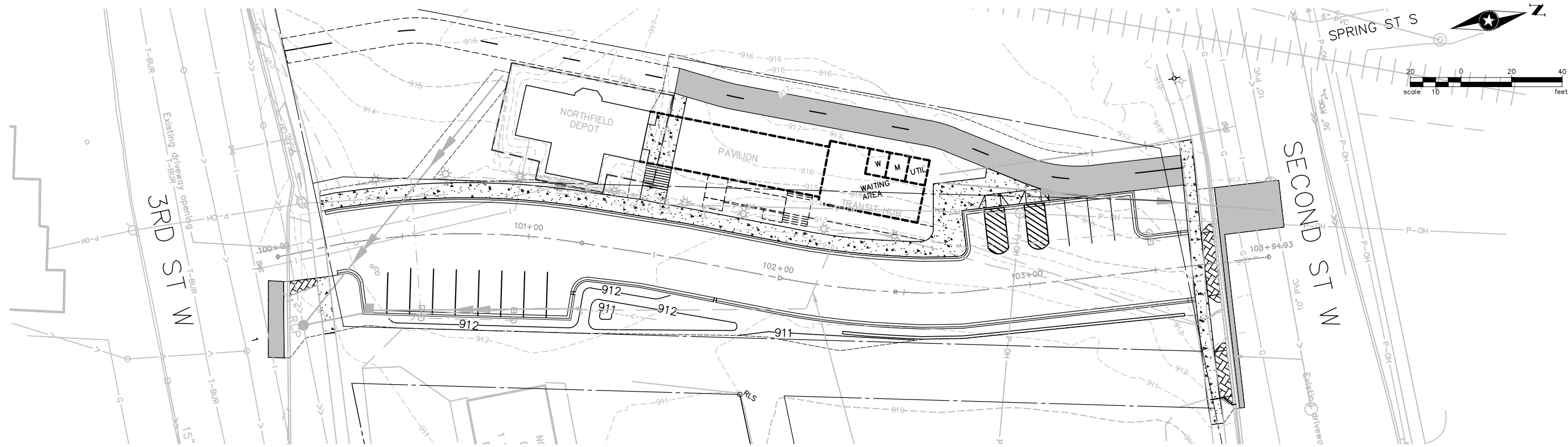
WAYNE HOLE
PRINTED NAME

PRELIMINARY

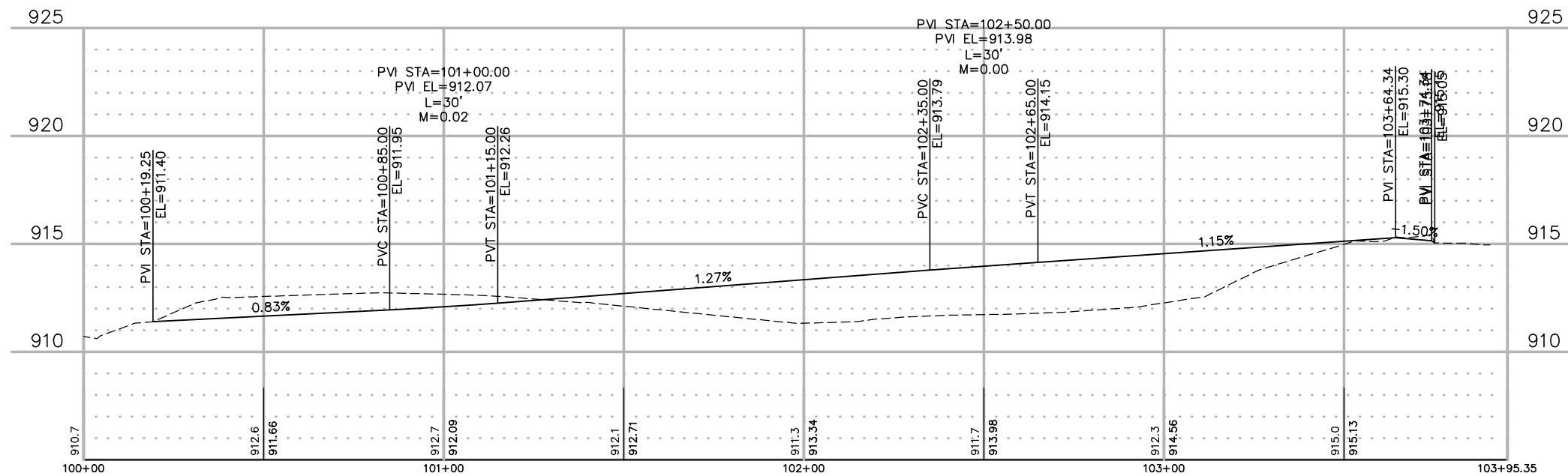
**HISTORIC DEPOT AND TRANSIT HUB
NORTHFIELD, MN**

PROPOSED UTILITIES

FILE NO. NF140077	7
DATE: X/XX/XX	10



HISTORIC DEPOT/TRANSIT HUB



Z:\KON\N\Final\140077\5-final-dsgn\5-final-dsgn\10-Civil\cod\dwg\planshts\NF140077P.dwg 5/22/2019 12:40 PM csweney

DRAWN BY: AB
 DESIGNER: AB
 CHECKED BY: WH
 DESIGN TEAM

NO.	BY	DATE	REVISIONS

HEREBY CERTIFY THAT THIS PLAN WAS PREPARED BY ME OR UNDER MY DIRECT SUPERVISION AND THAT I AM A DULY LICENSED PROFESSIONAL ENGINEER UNDER THE LAWS OF THE STATE OF MINNESOTA.
 SIGNATURE: WAYNE HOGE
 DATE: _____
 Lic. No. 25057

SEH
 PHONE: 952.912.2600
 10901 RED CIRCLE DRIVE #300
 MINNETONKA, MN 55343-9302
 www.sehinc.com

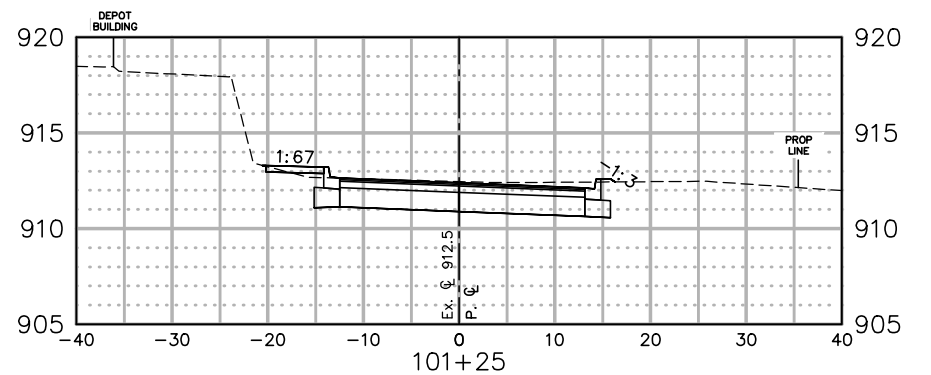
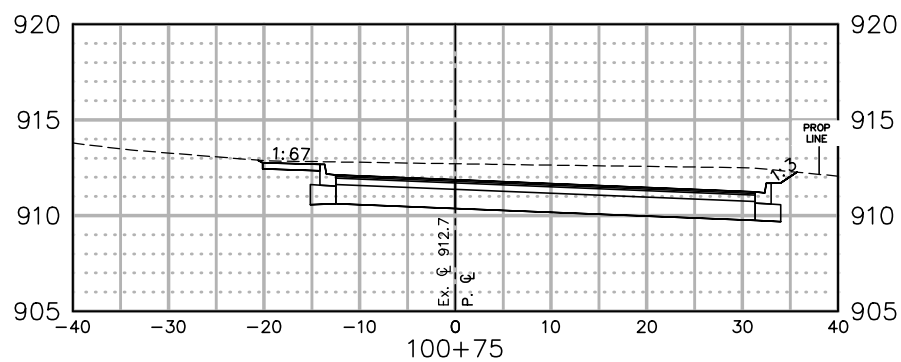
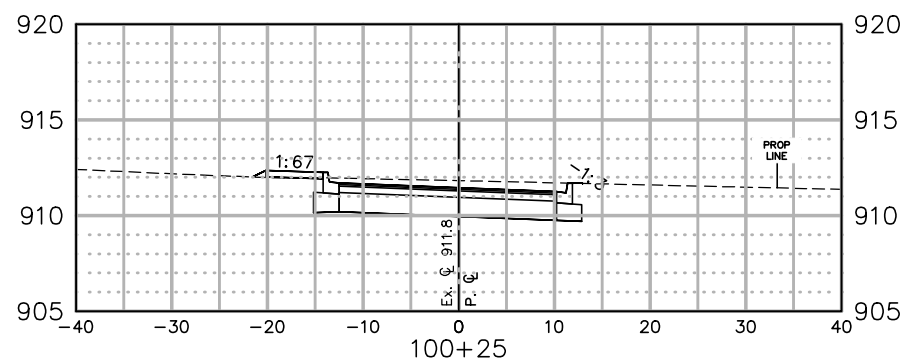
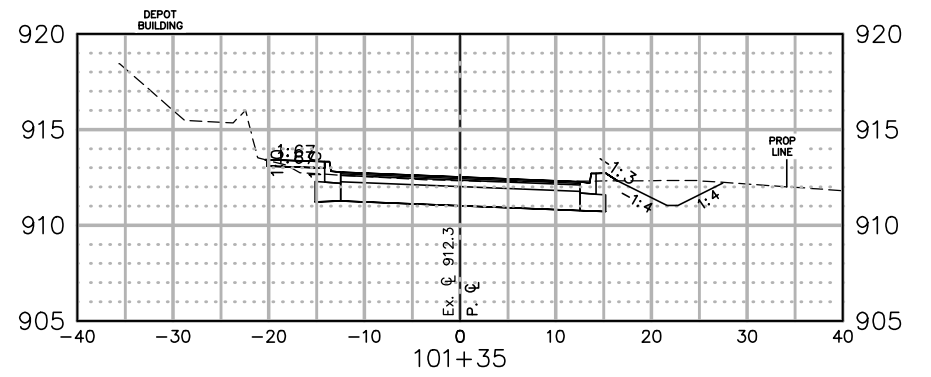
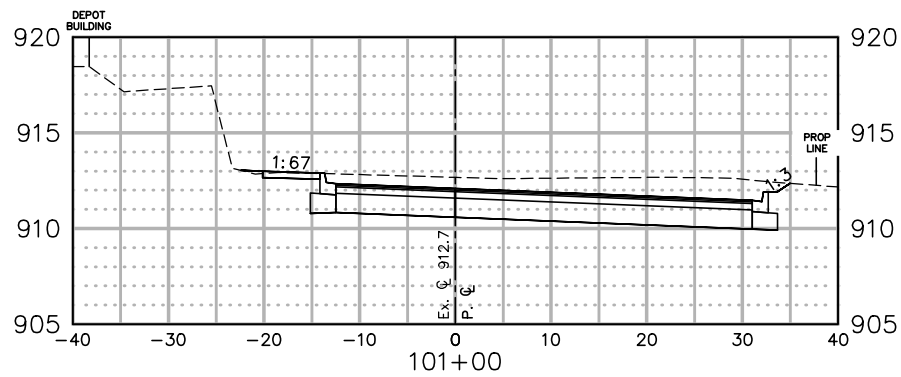
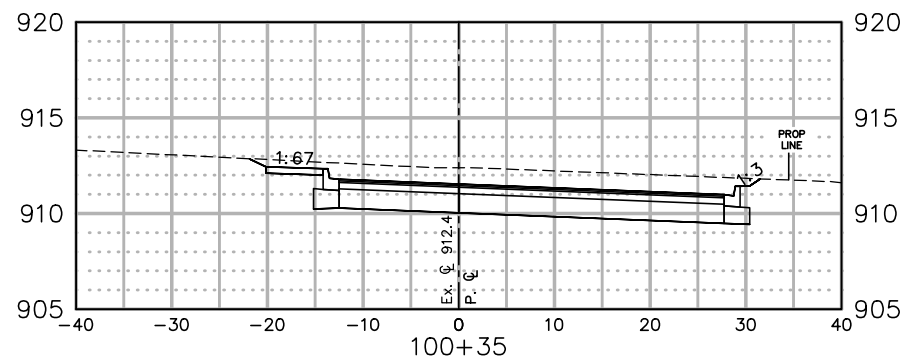
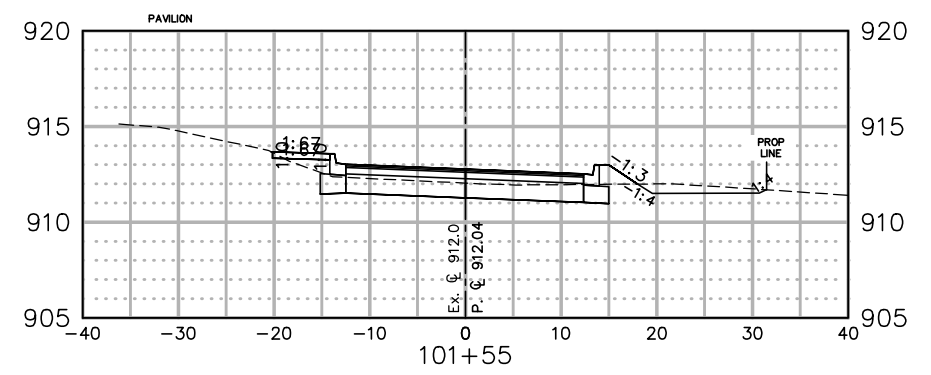
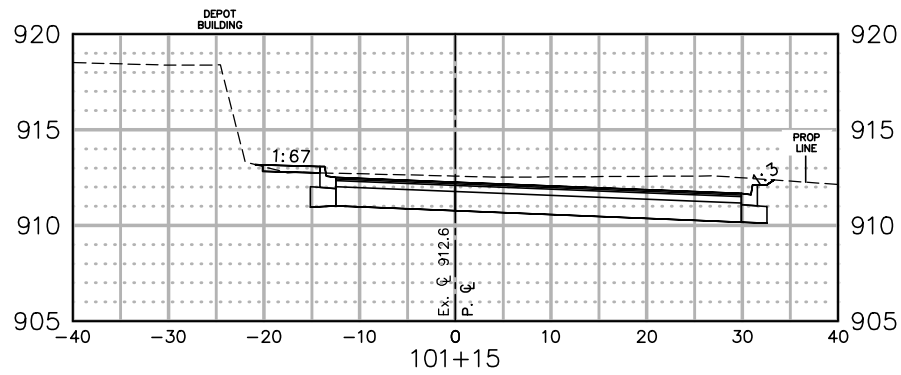
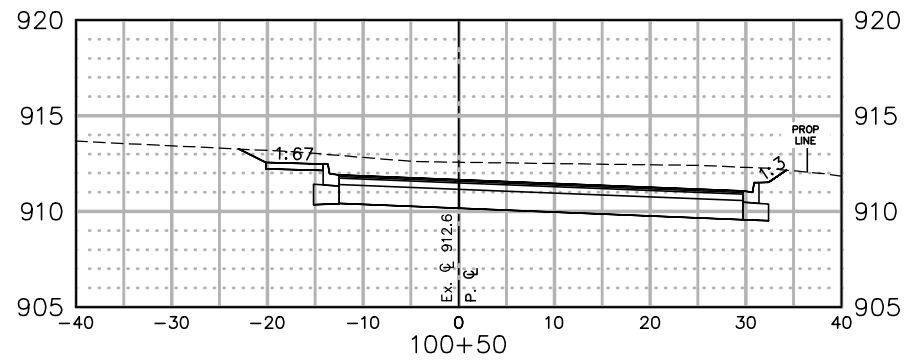


HISTORIC DEPOT AND TRANSIT HUB
 NORTHFIELD, MN

PLAN AND PROFILE

FILE NO. NF140077
 DATE: X/XX/XX
8
10

Z:\KON\N\140077\5-final-dsgn\51-drawings\10-Civil\cod\civil_3d\NF140077A.dwg 5/23/2019 4:02 PM csweney



DRAWN BY: AB			
DESIGNER: AB			
CHECKED BY: WH			
DESIGN TEAM	NO.	BY	DATE
			REVISIONS

I HEREBY CERTIFY THAT THIS PLAN WAS PREPARED BY ME OR UNDER MY DIRECT SUPERVISION AND THAT I AM A DULY LICENSED PROFESSIONAL ENGINEER UNDER THE LAWS OF THE STATE OF MINNESOTA.

DATE: _____
 SIGNATURE: _____
 WAYNE HOLE
 PRINTED NAME: _____ Lic. No. 25057

SEH
 PHONE: 952.912.2600
 10901 RED CIRCLE DRIVE #300
 MINNETONKA, MN 55343-9302
 www.sehinc.com

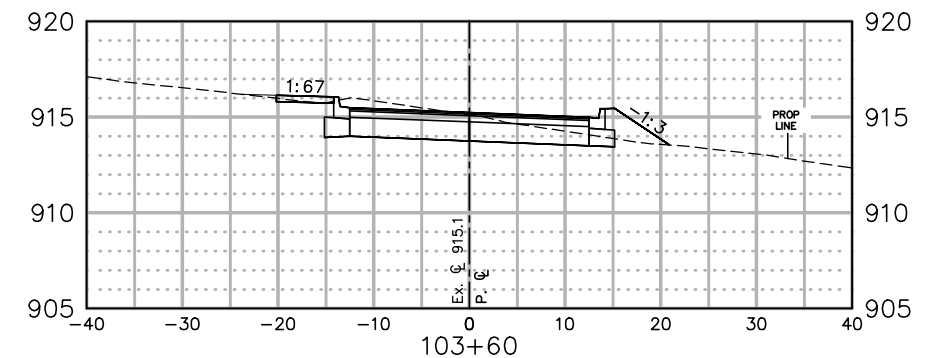
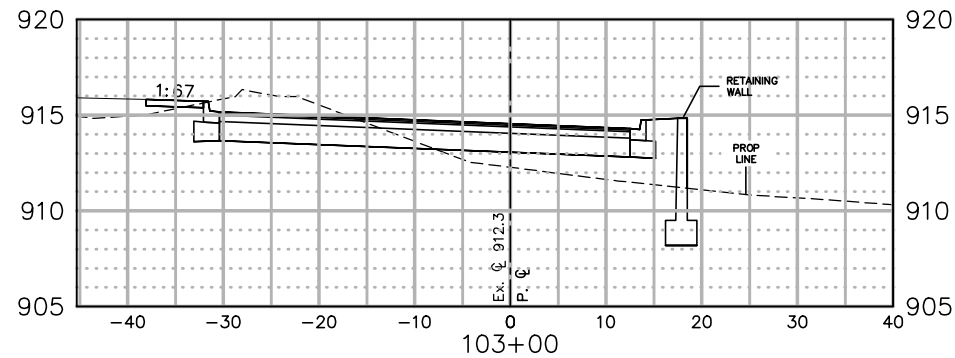
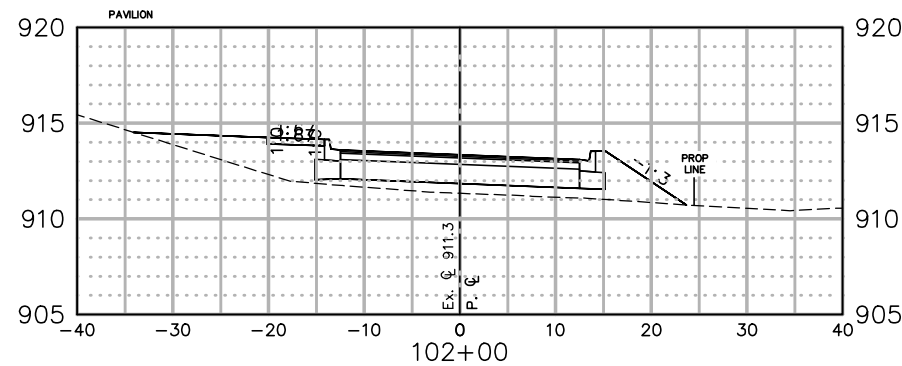
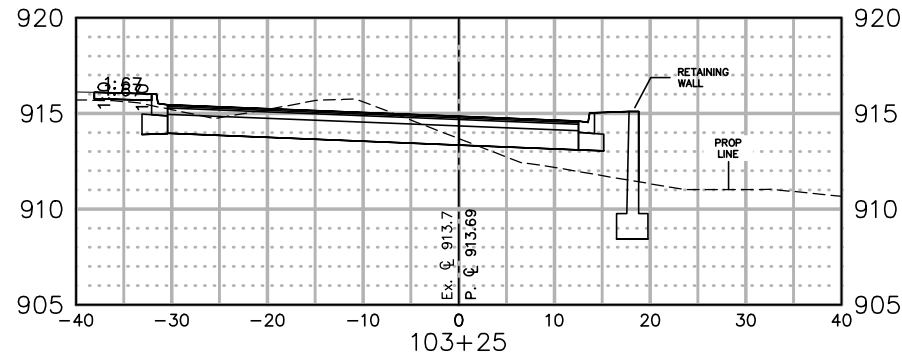
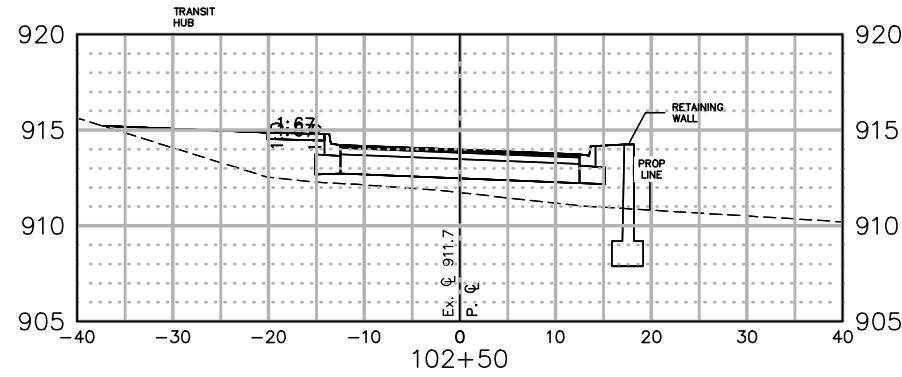
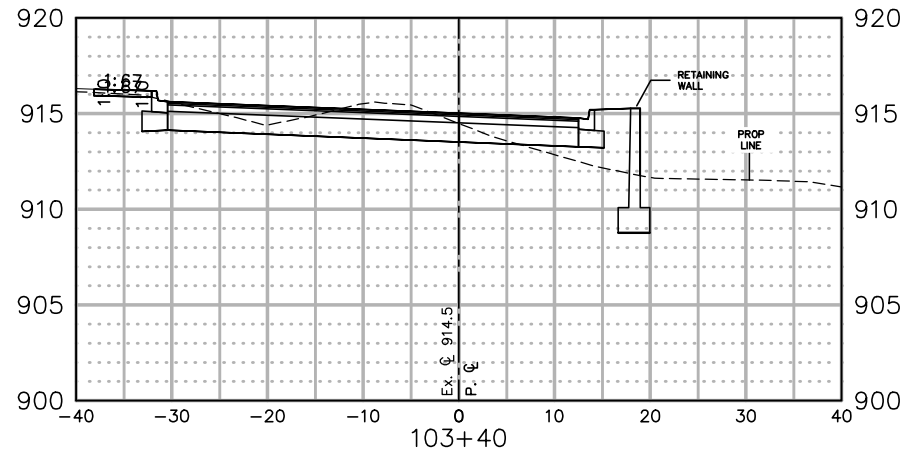
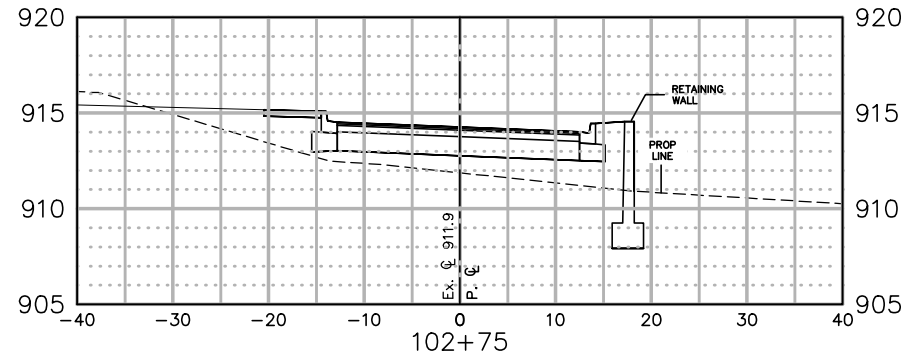


HISTORIC DEPOT AND TRANSIT HUB NORTHFIELD, MN

CROSS SECTIONS

FILE NO. NF140077	9 10
DATE: X/XX/XX	

Z:\KON\N\140077\5-final-dsgn\51-drawings\10-Civil\cod\civil_3d\NF140077A.dwg 5/23/2019 4:02 PM csweney



DRAWN BY: AB			
DESIGNER: AB			
CHECKED BY: WH			
DESIGN TEAM	NO.	BY	DATE
			REVISIONS

HEREBY CERTIFY THAT THIS PLAN WAS PREPARED BY ME OR UNDER MY DIRECT SUPERVISION AND THAT I AM A DULY LICENSED PROFESSIONAL ENGINEER UNDER THE LAWS OF THE STATE OF MINNESOTA.

SIGNATURE: WAYNE HOLE
 DATE: _____
 Lic. No. 25057

SEH
 PHONE: 952.912.2600
 10901 RED CIRCLE DRIVE #300
 MINNETONKA, MN 55343-9302
 www.sehinc.com



**HISTORIC DEPOT AND TRANSIT HUB
 NORTHFIELD, MN**

CROSS SECTIONS

FILE NO. NF140077	10
DATE: X/XX/XX	10