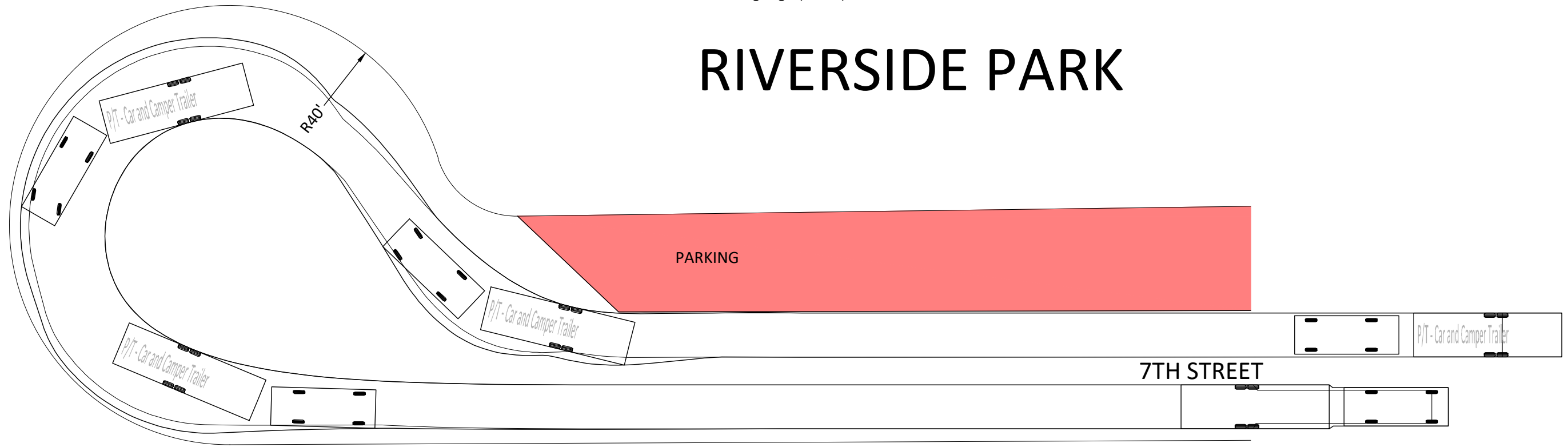
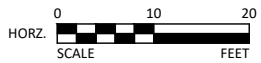


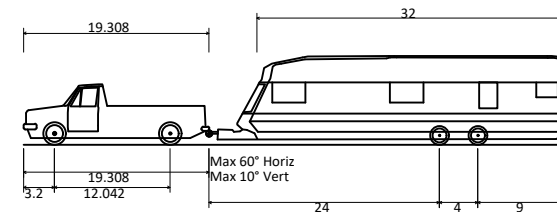
P/T - Car and Camper Trailer	
Overall Length	48.701ft
Overall Width	8.000ft
Overall Body Height	10.008ft
Min Body Ground Clearance	0.795ft
Max Track Width	8.000ft
Lock-to-lock time	4.00s
Max Steering Angle (Virtual)	21.50°

RIVERSIDE PARK



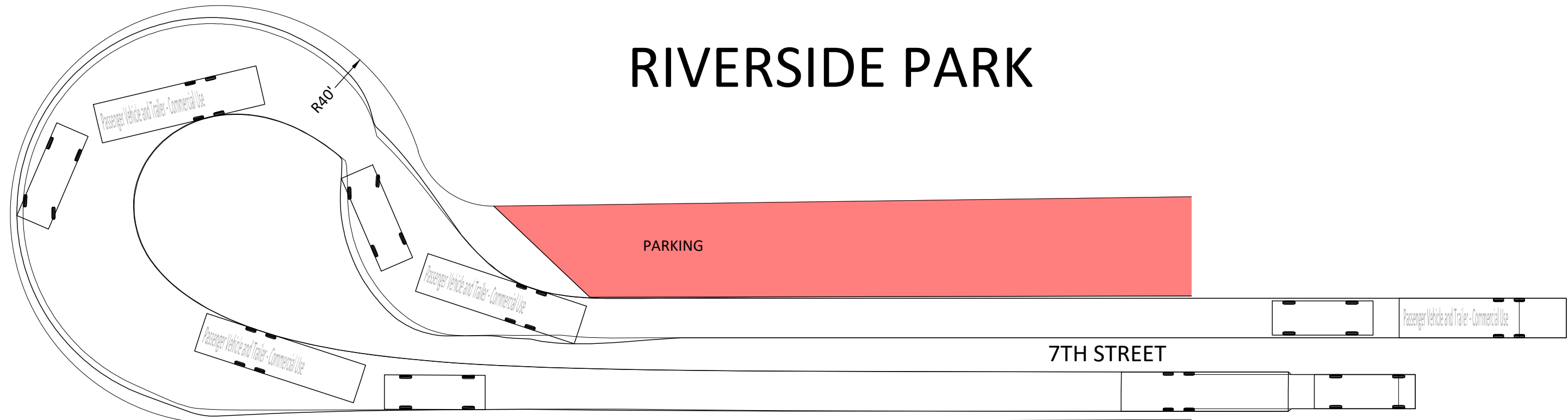
H:\NOFD\T18119539\CAD\C3D\MISC-TURNING MOVEMENTS.dwg 12/20/2019 1:56:24 PM





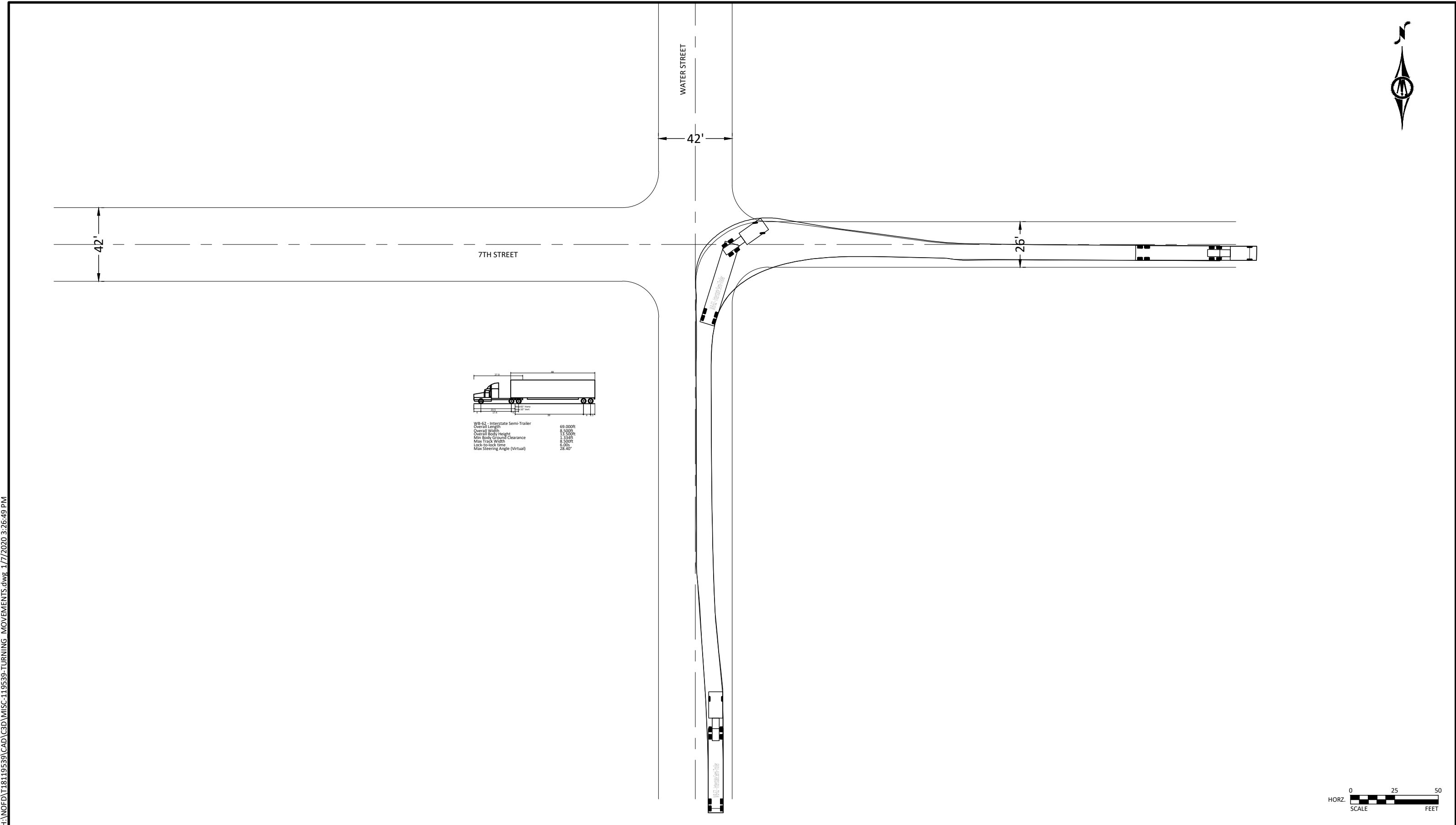
Passenger Vehicle and Trailer - Commercial Use	
Overall Length	56.308ft
Overall Width	7.546ft
Overall Body Height	9.260ft
Min Body Ground Clearance	0.583ft
Max Track Width	7.539ft
Lock-to-lock time	4.00s
Curb to Curb Turning Radius	23.500ft

RIVERSIDE PARK

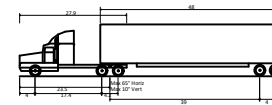
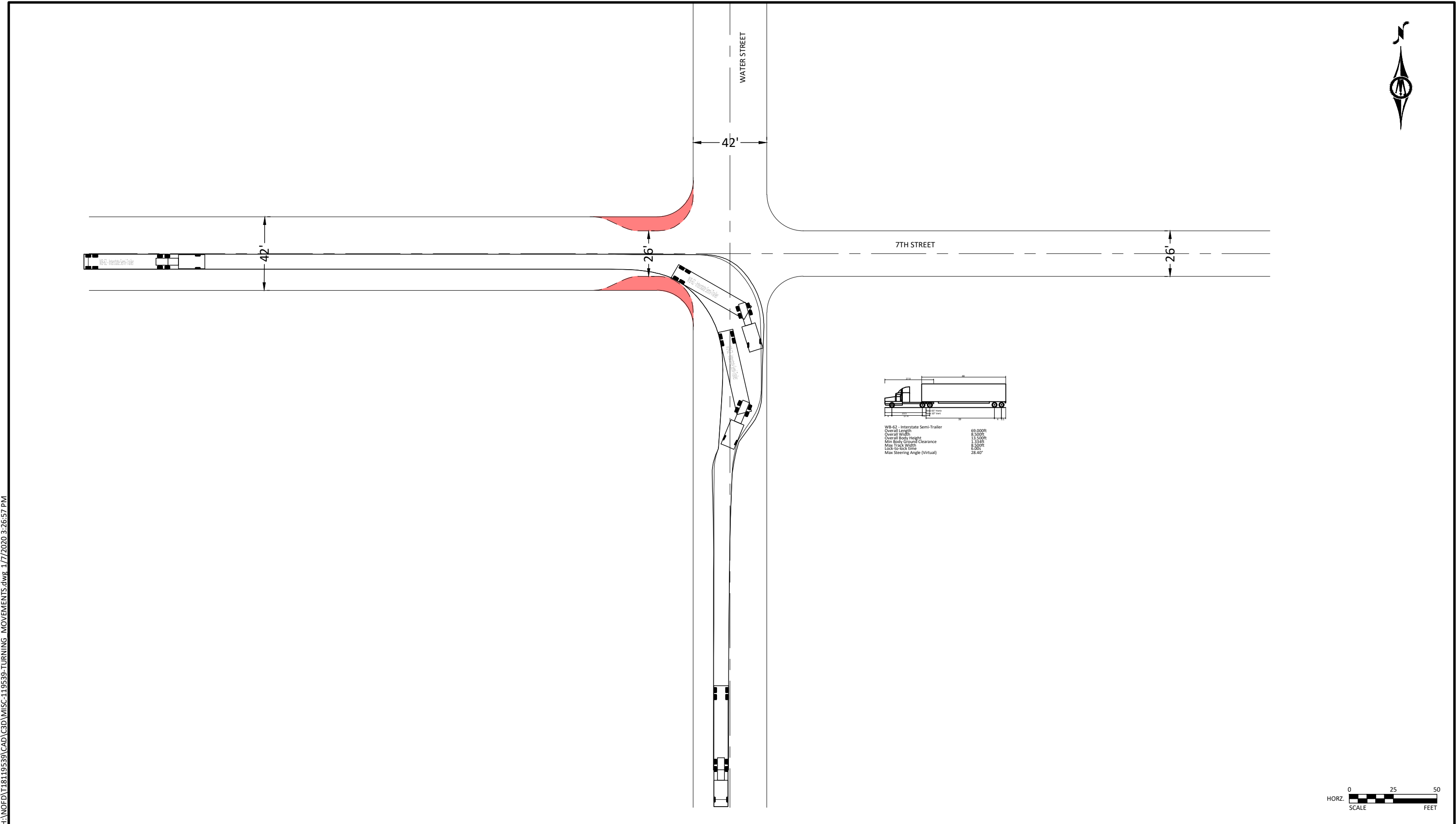


H:\NOFD\T18119539\CAD\C3D\MISC-TURNING MOVEMENTS.dwg 12/20/2019 1:56:32 PM



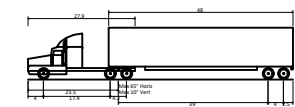
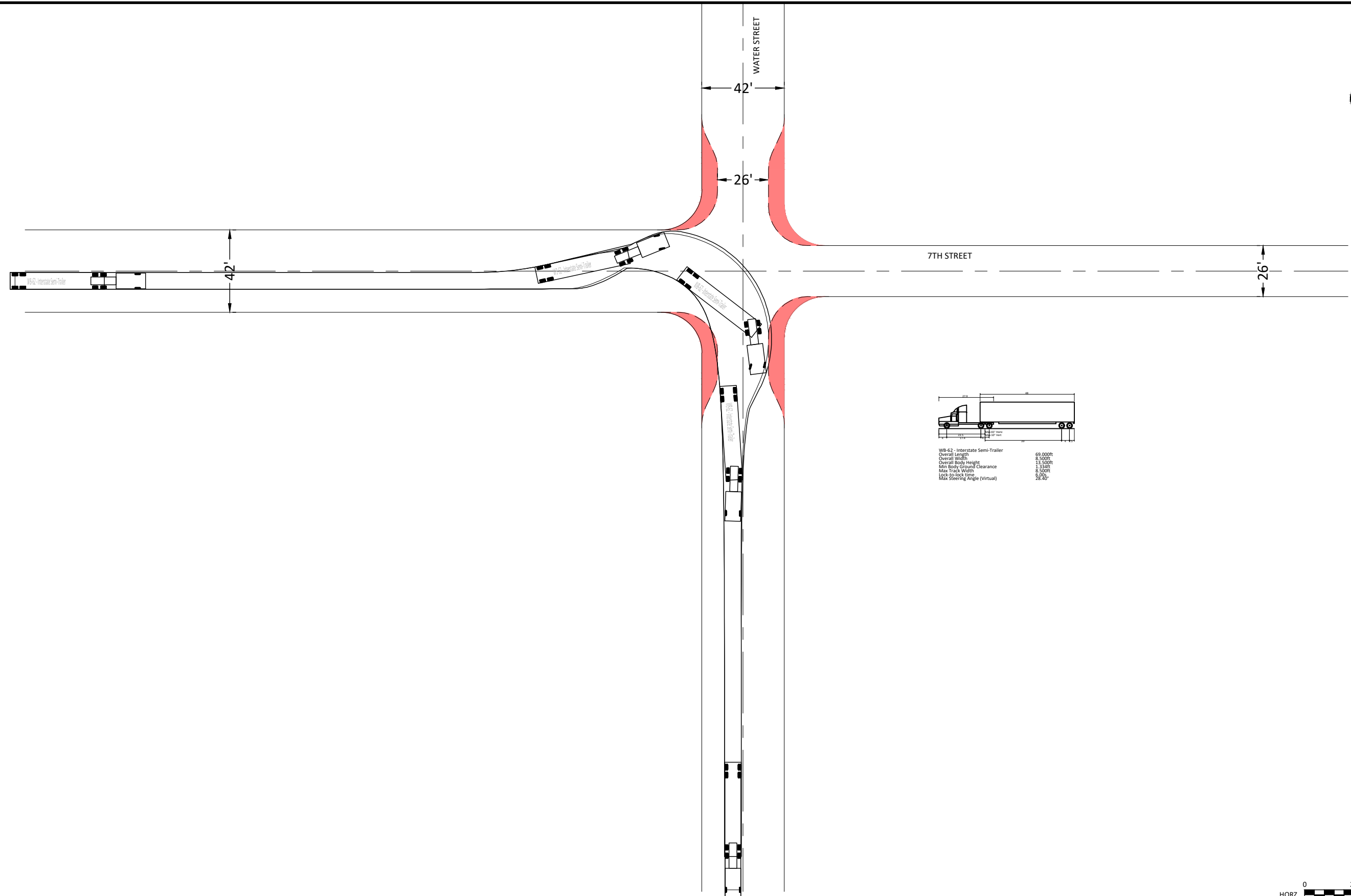


H:\NOFD\18119539\CAD\C3D\MISC-119539-TURNING MOVEMENTS.dwg, 1/7/2020 3:26:49 PM

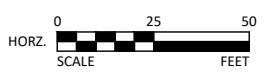


WB-62 - Interstate Semi-Trailer	69.00ft
Overall Length	8.500ft
Overall Width	11.500ft
Overall Body Height	1.334ft
Min Body Ground Clearance	8.500ft
Max Track Width	6.000ft
Lock-to-lock time	28.40°
Max Steering Angle (Virtual)	

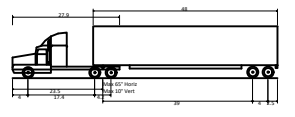
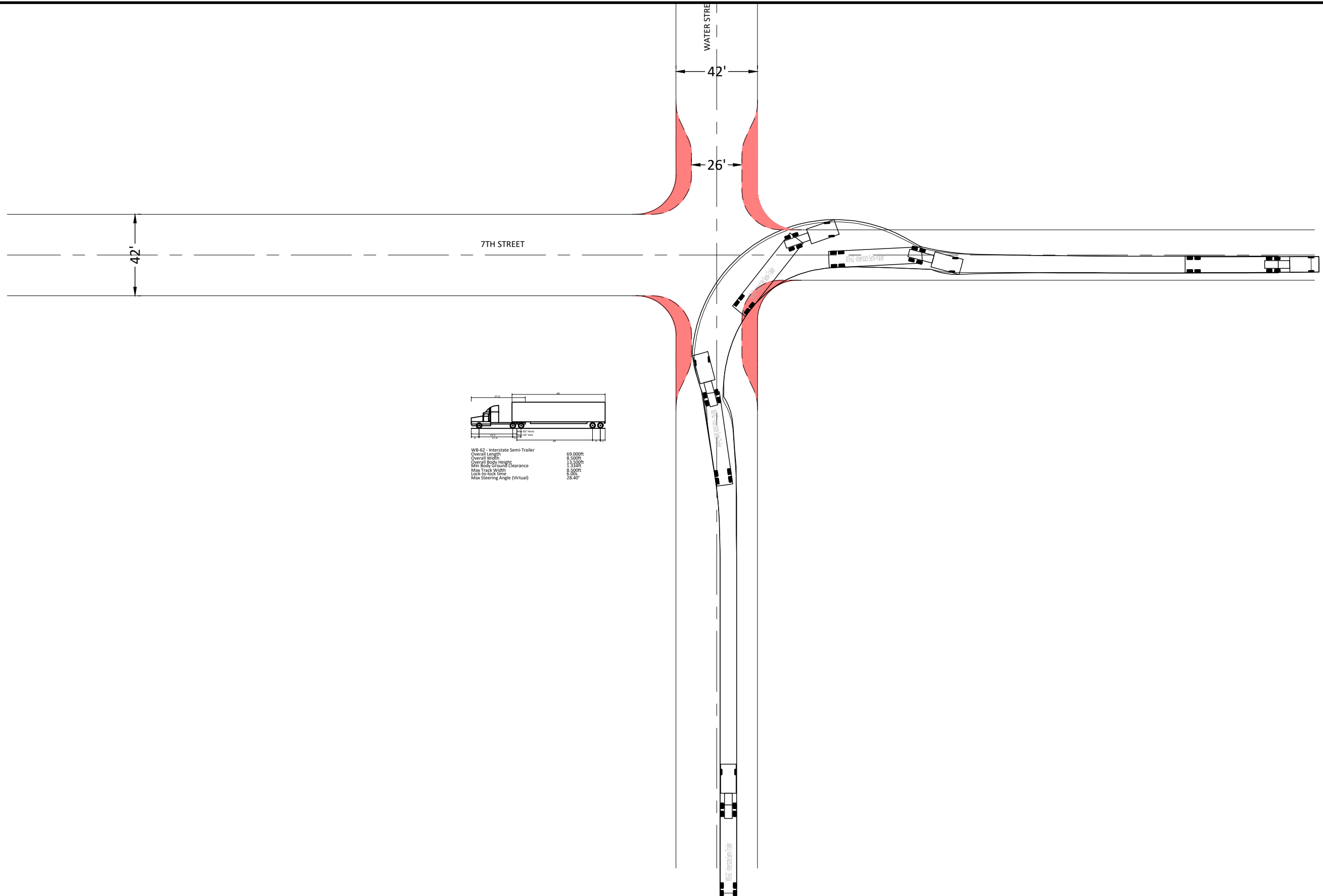




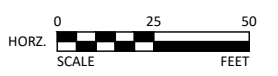
WB-62 - Interstate Semi-Trailer	69.000ft
Overall Length	8.500ft
Overall Width	13.500ft
Overall Body Height	1.334ft
Min Body Ground Clearance	8.500ft
Max Track Width	5.000
Lock-to-lock time	28.25°
Max Steering angle (Virtual)	



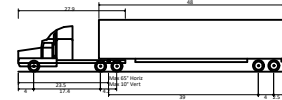
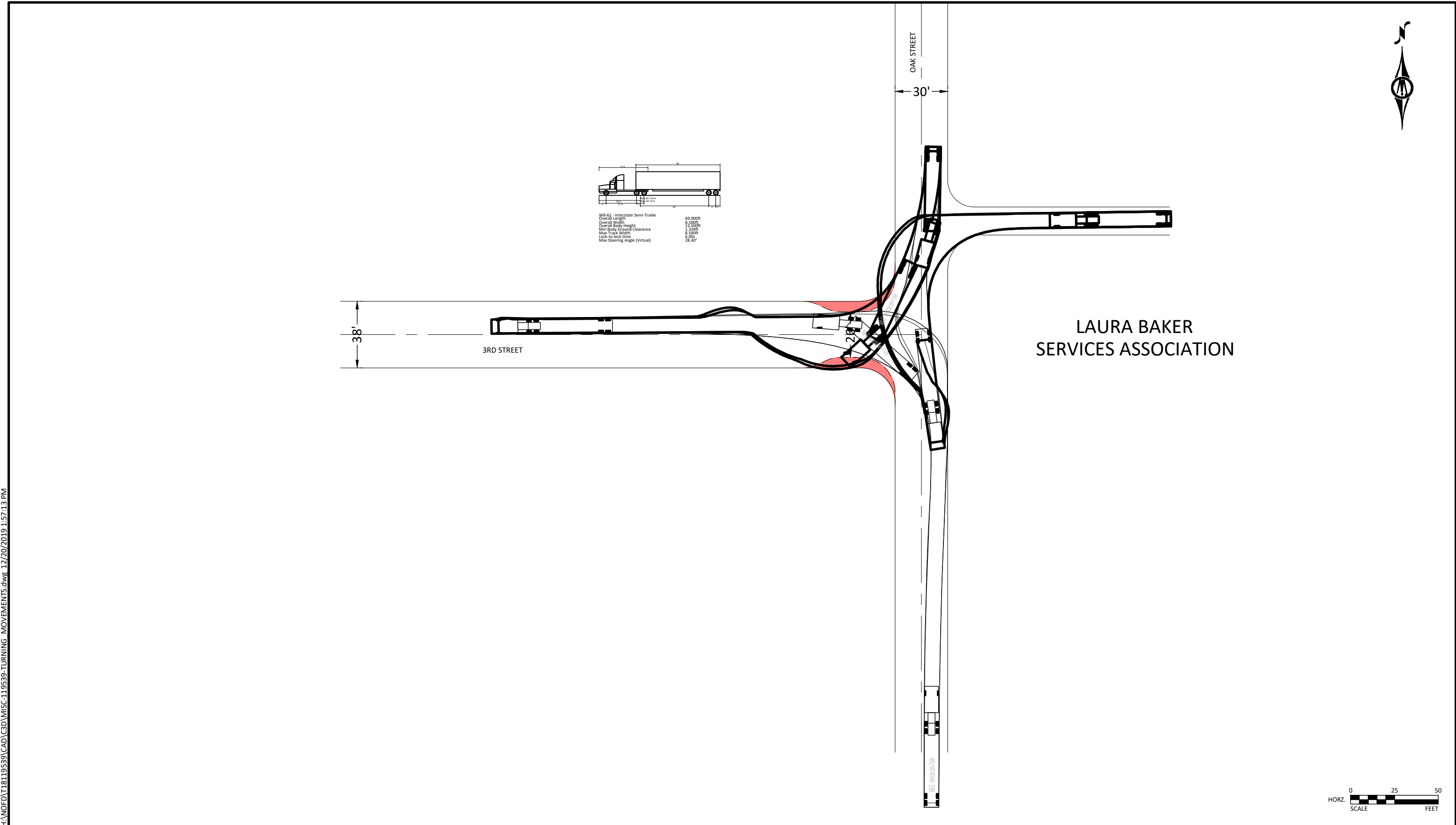
H:\NOFD\18119539\CAD\C3D\MISC-TURNING MOVEMENTS.dwg, 1/7/2020 3:27:04 PM



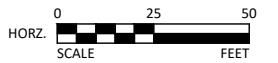
WB-62 - Interstate Semi-Trailer
Overall Length 69.000ft
Overall Width 8.500ft
Overall Body Height 13.500ft
With Body Ground Clearance 11.354ft
Max Track Width 8.500ft
Lock-to-lock time 6.20s
Max Steering Angle (Virtual) 28.40°



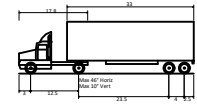
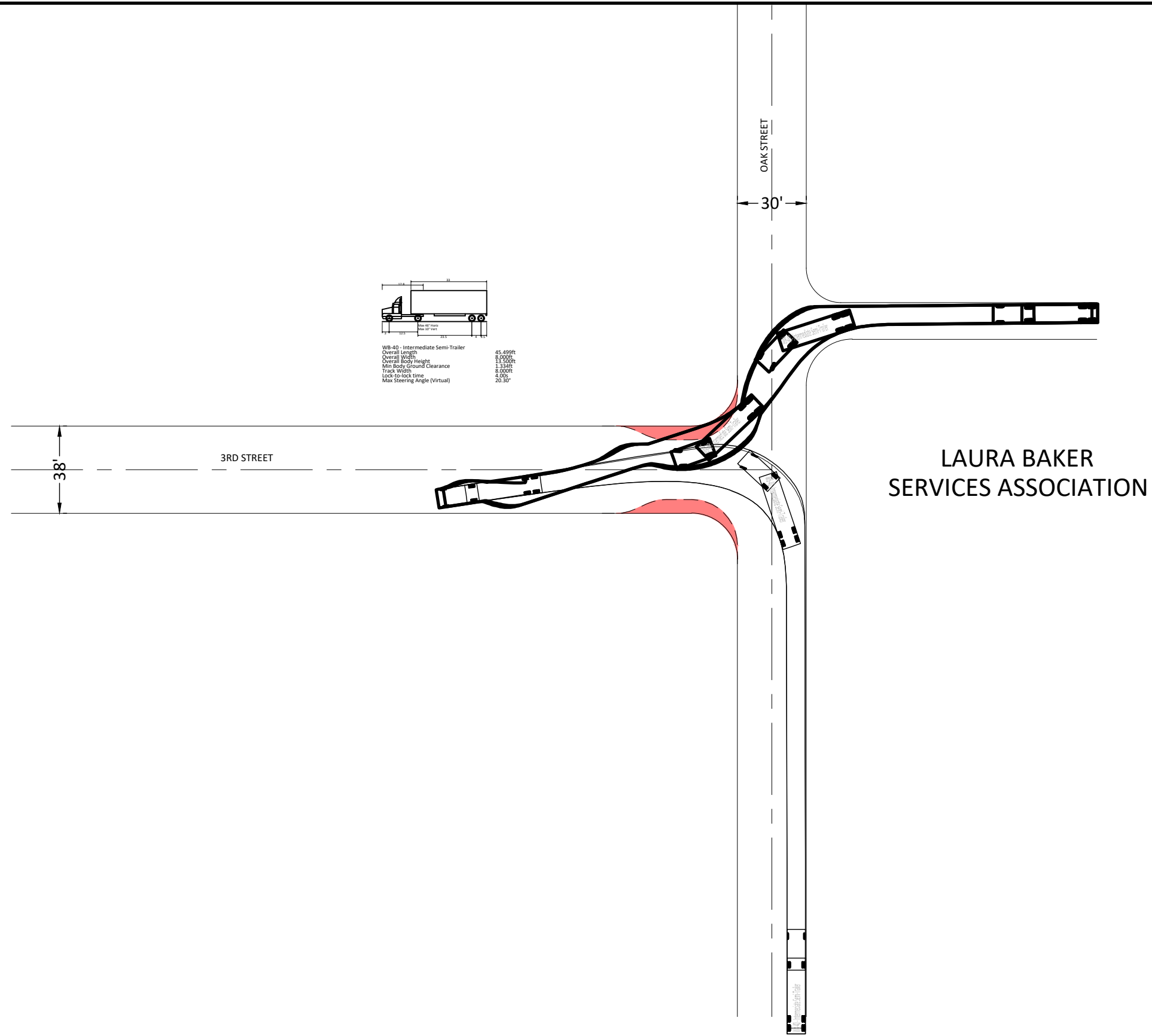
H:\NOFD\18119539\CAD\C3D\MISC-TURNING MOVEMENTS.dwg, 1/7/2020 3:27:12 PM



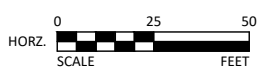
WB-62 - Interstate Semi-Trailer	69,000lb
Overall Length	8,500ft
Overall Width	13,500ft
Overall Body Height	1,345ft
Min Body Ground Clearance	8,500ft
Max Track Width	6,000ft
Lock-to-lock time	28.40"
Max Steering Angle (Virtual)	



H:\NOFD\18119539\CAD\C3D\MISC-TURNING MOVEMENTS.dwg 12/20/2019 1:57:13 PM



WB-40 - Intermediate Semi-Trailer	45.49ft
Overall Length	8.00ft
Overall Width	11.33ft
Overall Body Height	8.00ft
Min Body Ground Clearance	4.00ft
Track Width	4.00ft
Lock-to-lock time	20.30"
Max Steering Angle (Virtual)	



H:\NOFD\18119539\CAD\C3D\MISC-TURNING MOVEMENTS.dwg 12/20/2019 1:57:20 PM