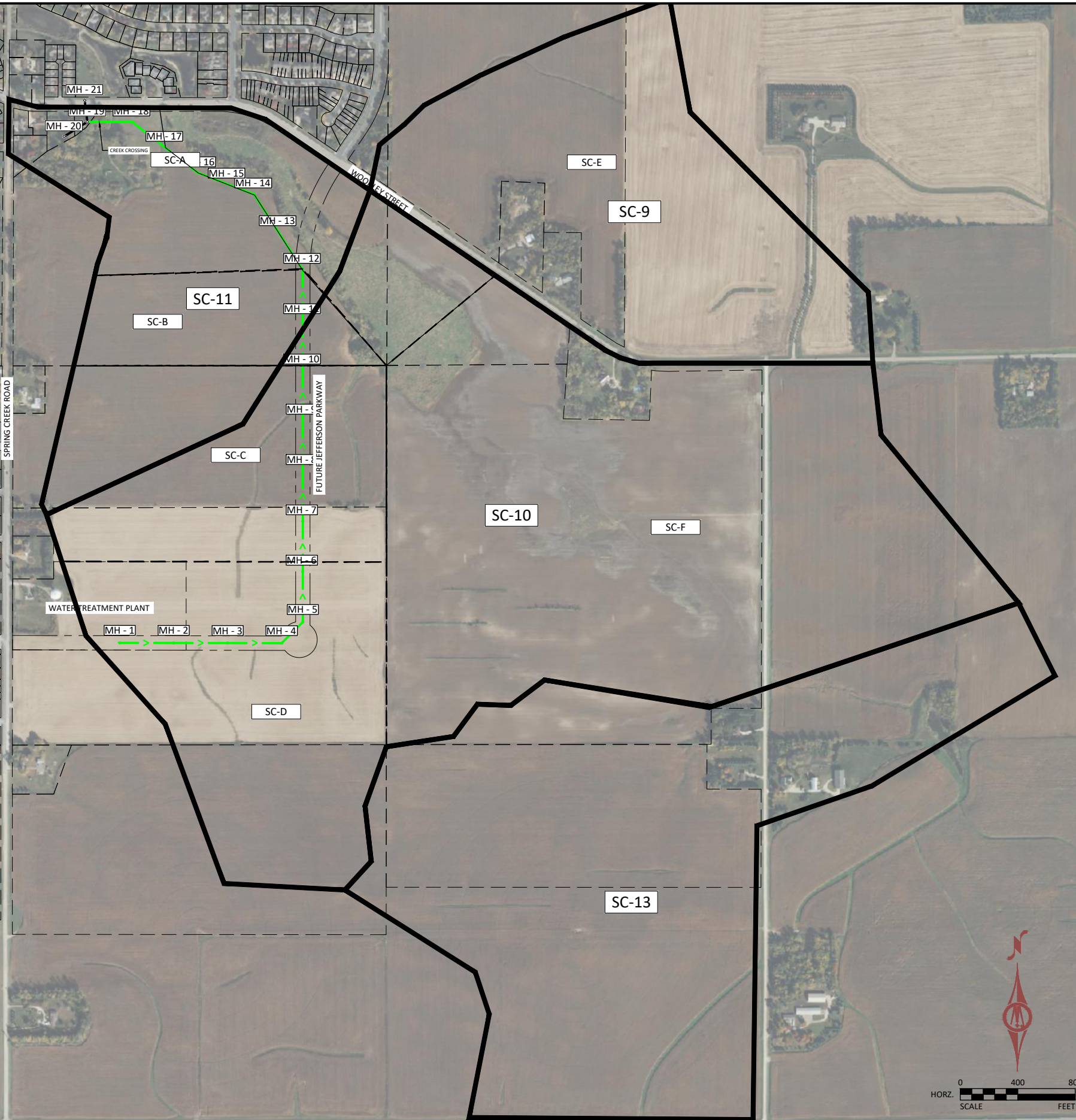


Sewershed ID	AREA(SF)	AREA(AC)	OPEN SPACE (AC)	DEV. AREA(AC)	GPD	GPM
Sanitary Sewer Comp Plan						
SC-9	4990472	114.6	0	114.7	144,478	100.3
SC-10	4152198	95.3	33.8	61.5	77,508	53.8
SC-11	15892033	364.8	17.0	347.8	438,267	304.4
SC-13	8380396	192.4	4.4	188.0	236,864	164.5
TOTAL	33415099	767	55	712	897118	623
Design						
SC-A	2898615	66.5	35.5	31.1	39,161	27.2
SC-B	1177968	27.0	0.0	27.0	34,073	23.7
SC-C	3132965	71.9	2.2	69.7	87,825	61.0
SC-D	3626091	83.2	0.0	83.2	104,887	72.8
SC-E	4990472	114.6	0.0	114.6	144,352	100.2
SC-F	17577731	403.5	17.2	386.4	486,826	338.1
TOTAL	33403842	767	55	712	897125	623

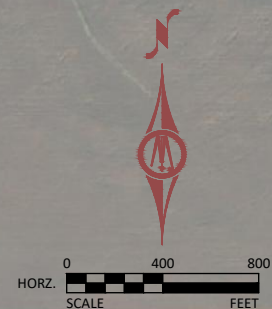
Pipe Segment	Sewersheds	Cummulative Flow	Pipe Size	Gravity Capacity	Peaking Factor
Mh-12 to MH-19	A, B, C, D, E, F	623	18"	2123	3.41
MH-10 to MH-12	B, C, D	157	10"	520	3.30
MH-6 to MH-10	C, D	134	10"	520	3.89
MH-1 to MH-6	D	73	8"	343	4.71



12224 NICOLLET AVENUE
 BURNSVILLE, MN 55337
 Phone: (952) 890-0509
 Email: BurnsVille@bolton-menk.com
 www.bolton-menk.com

DESIGNED	NO.	ISSUED FOR	DATE
DRAWN			
CHECKED			
CLIENT PROJ. NO.			

NORTHFIELD, MINNESOTA
 WTP TRUNK SEWER
 CONCEPT LAYOUT - OVERVIEW



© Bolton & Menk, Inc. 2024. All Rights Reserved. A:\WORK\02232323\WTP Trunk Sewer\MS5-5m Sewer Assessment - T10.dwg, 6/11/2024 12:00:50 PM