



# NORTHFIELD BRIDGE SQUARE

Design Updates

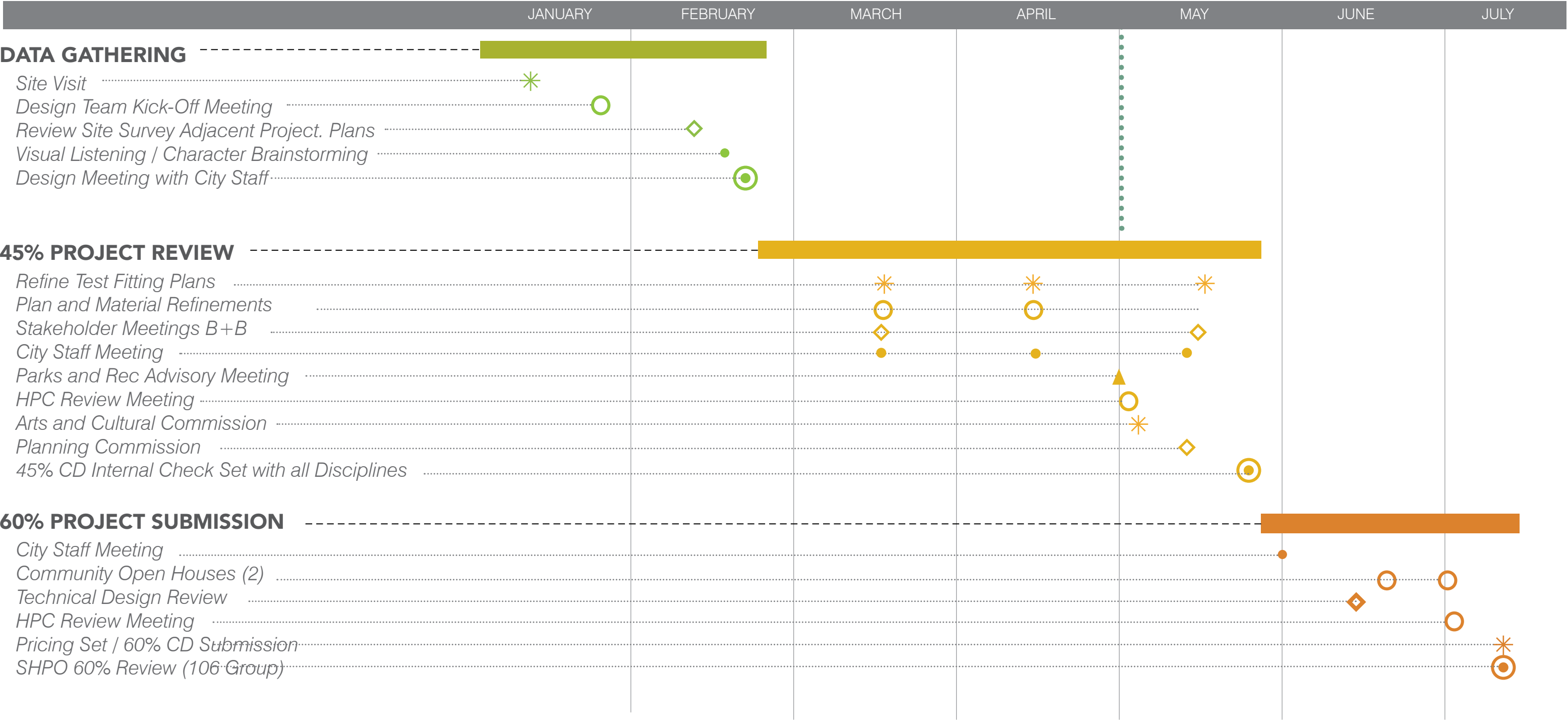
DF/ DAMON FARBER

City Of  
*Northfield*  
Minnesota

# SCHEDULE

WE ARE HERE

2023



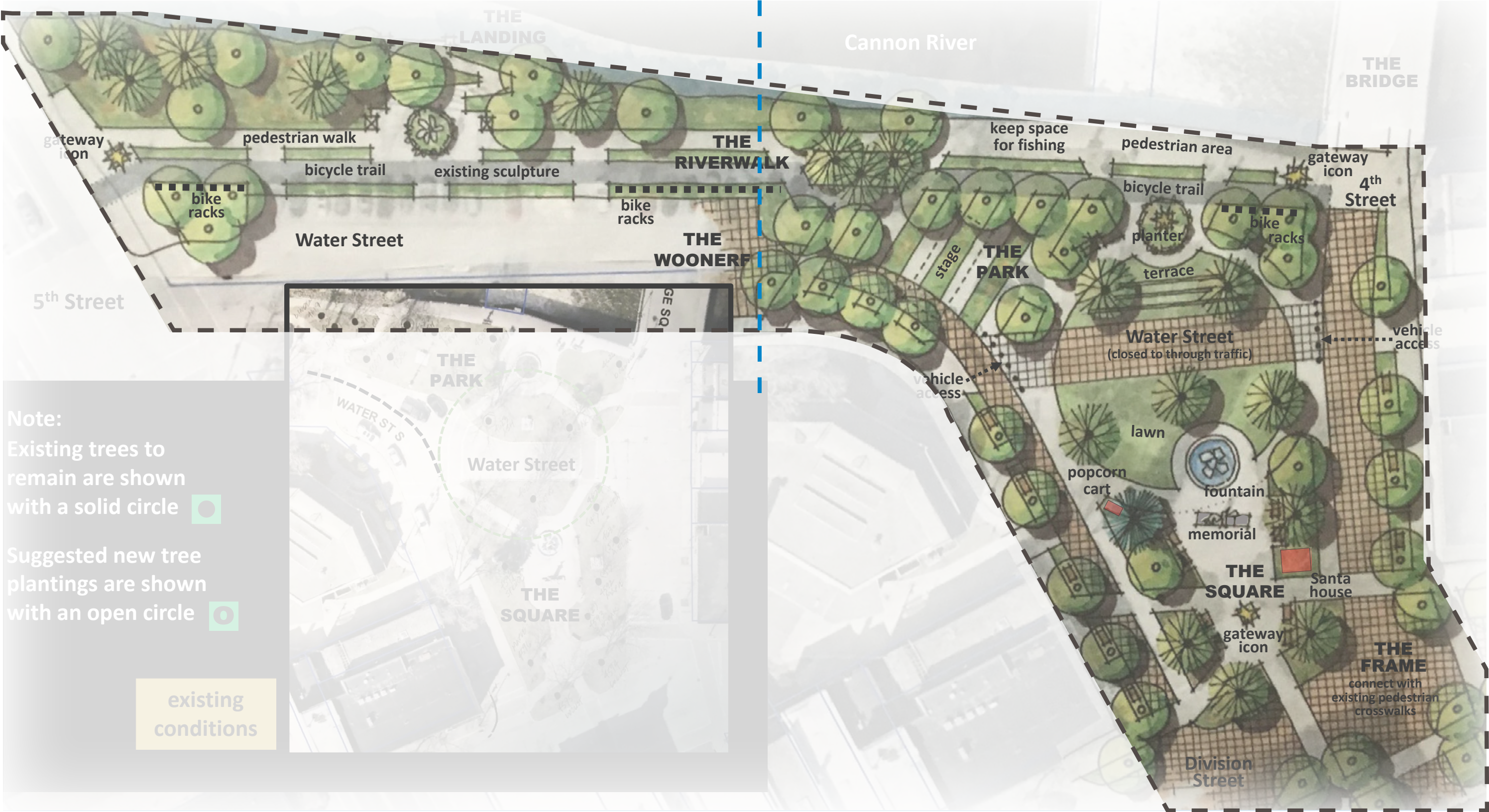
# SCHEDULE

Park and Recreation Advisory Board	Monday, May 1st
Heritage Preservation Commission	Wednesday, May 3rd
Arts and Cultural Commission	Monday, May 8th
Planning Commission	Thursday, May 18th
Stakeholder engagement meetings	Ongoing
Internal 45% Check Set	May 25th
ROM Cost Estimate	June 8th
Mayor and City Council	June 20th for Council Meeting or June 13th Working Session
Heritage Preservation Commission	Wednesday, July 5th
<b>60% Documentation Final</b>	<b>July 19th</b>



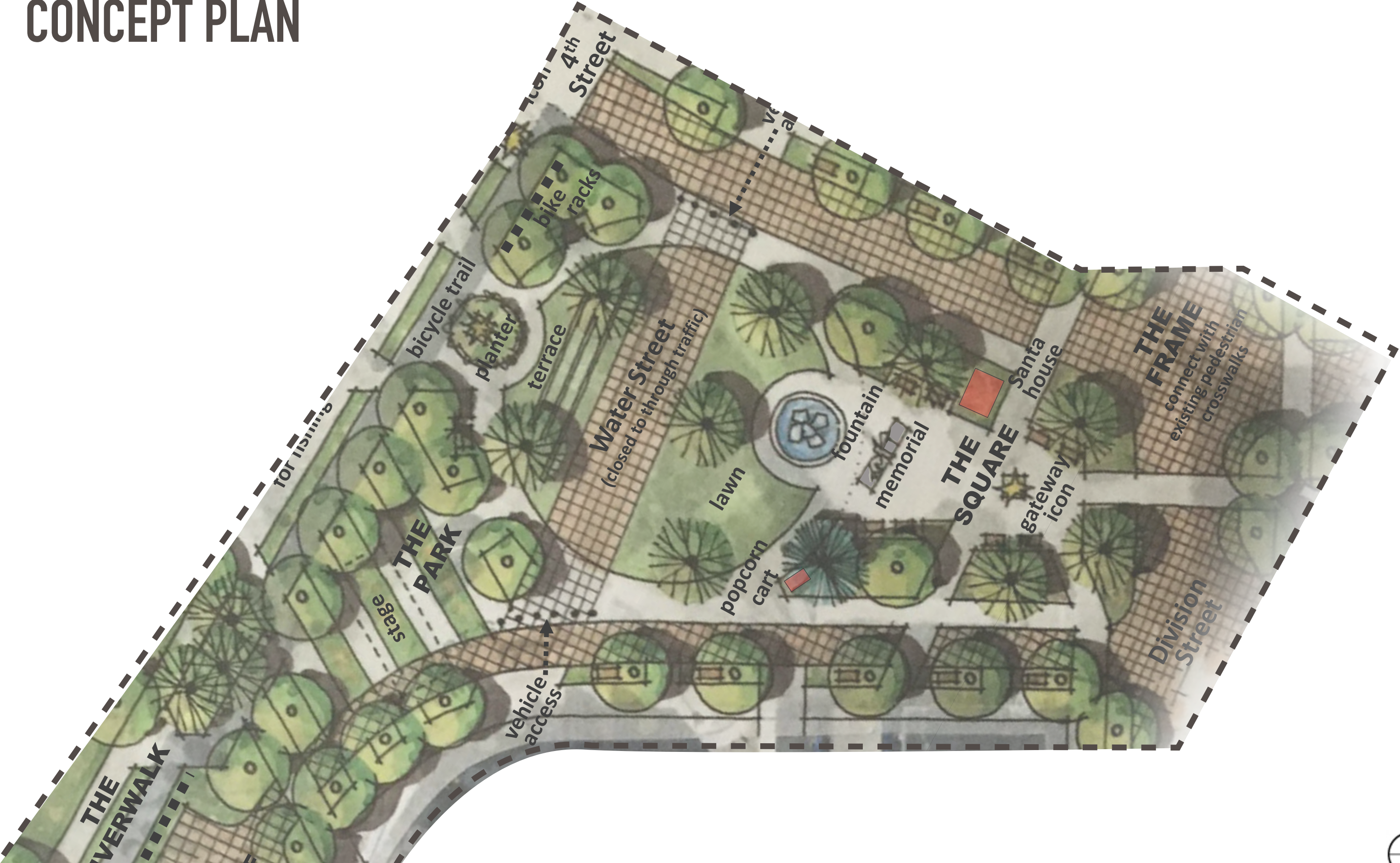
# CONCEPT PLAN

PHASE 2 | PHASE 1





# CONCEPT PLAN





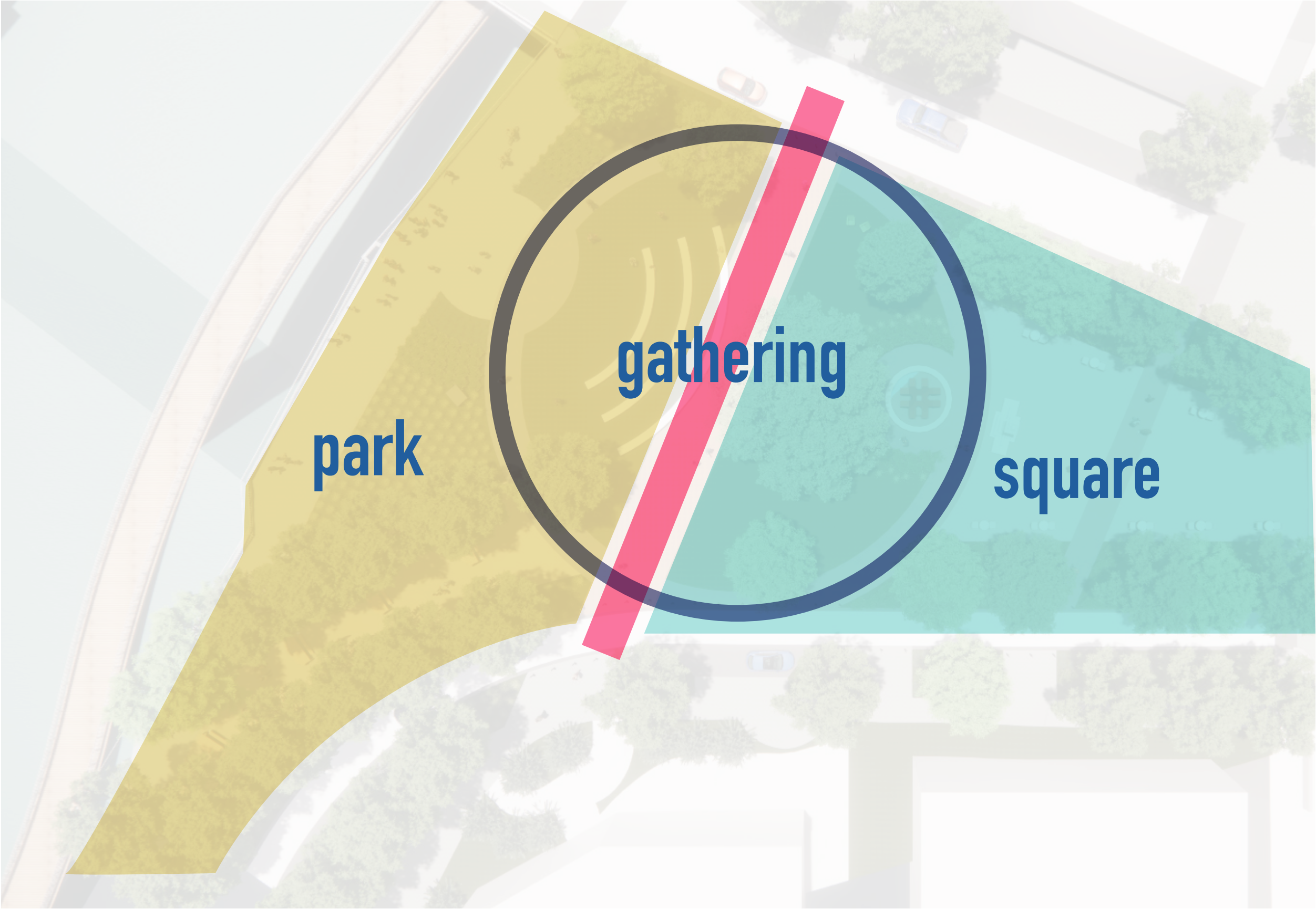
An aerial photograph of a city street grid. A river flows from the bottom left towards the center, crossing a multi-arched bridge. The city is built on a grid pattern, with various sized buildings and green spaces. The text "SITE PLAN" is overlaid in the center of the image.

# SITE PLAN



# CONCEPT DESIGN

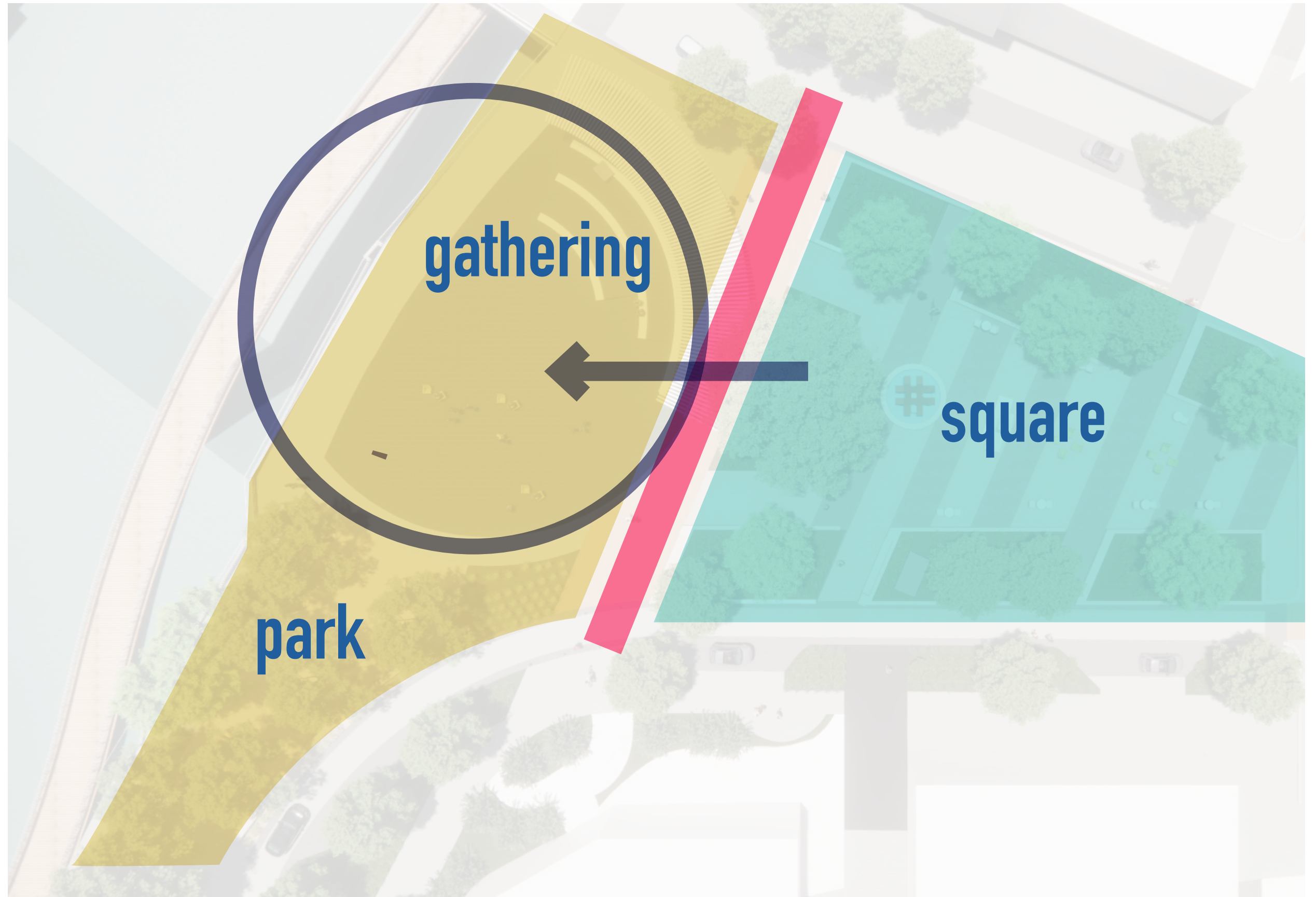
Water Street disrupts layout  
and divides the large  
gathering space in two.





# CONCEPT- SHIFT

Shifting the circular gathering space allows for the two distinct spaces to be created and enhanced function and flexibility.





# HISTORIC-STATUS UNDERSTANDING

- Period Of Significance : Designed Historic Landscape + Commerce 1855-1945
- Bridge Square is inventoried as a contributing resource for the Northfield Commercial Historic District
  - Two contributing sites: Bridge Square and Riverside Park
  - One contributing structure: Civil War Monument
- Character defining features could be:
  - Circulation system
  - Spatial Relationships and orientation (asymmetrical triangular perimeter)

# HISTORIC-STATUS UNDERSTANDING



1938



1950

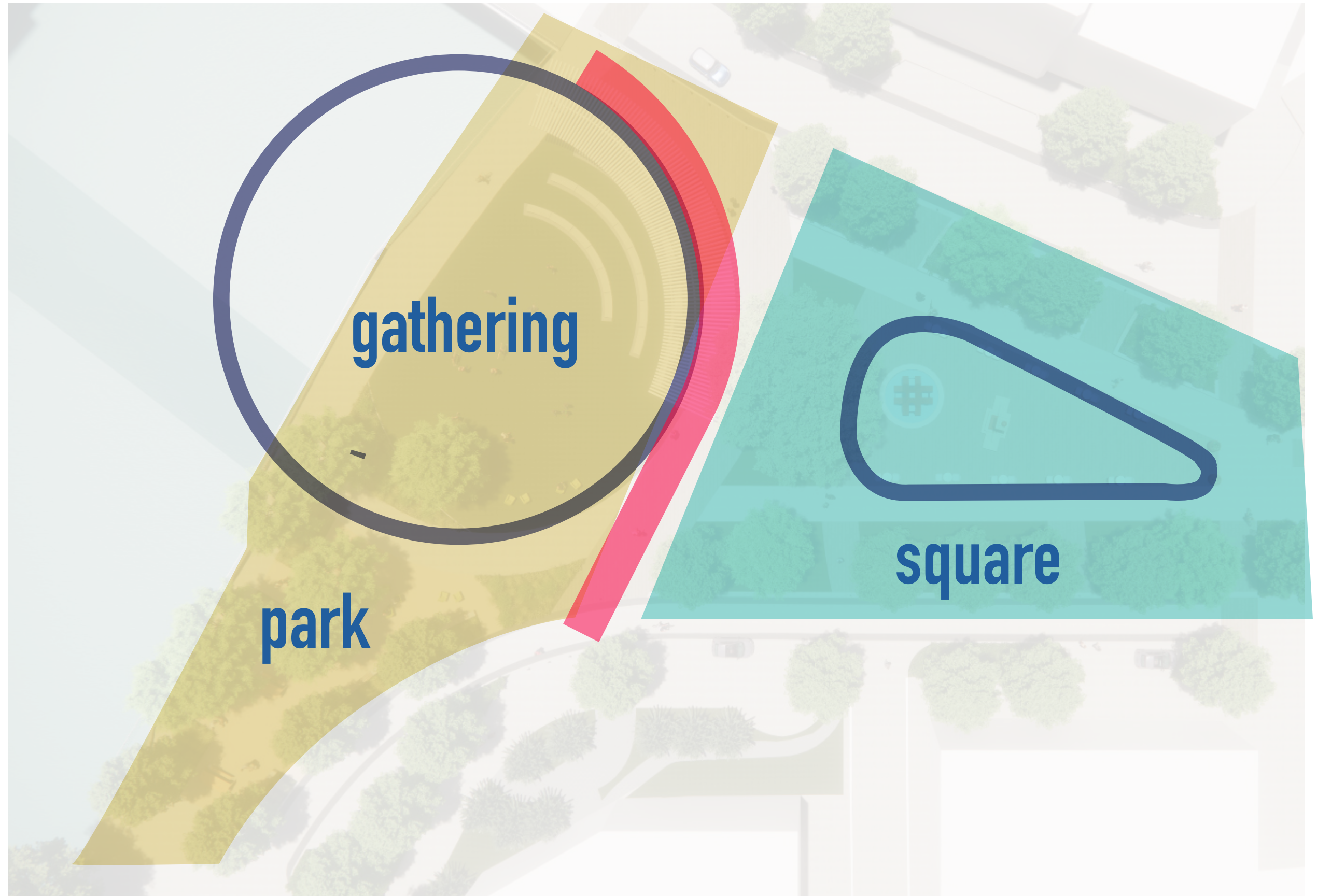




*Carleton Digital Collections, early/mid 1940's*

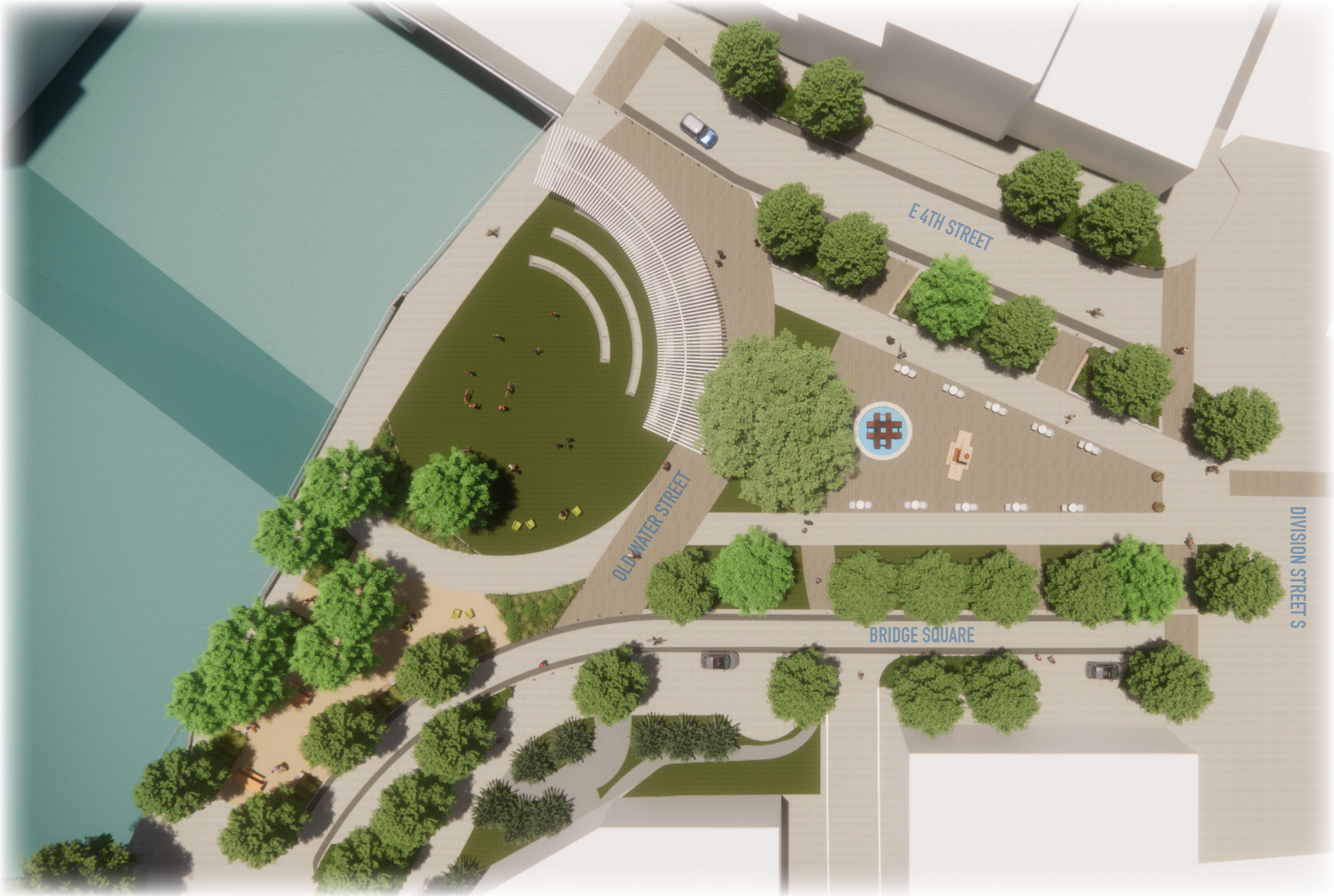
# CONCEPT- SWEEP

Further integrate Water Street and the historic triangle into the design of the space.





# SITE PLAN



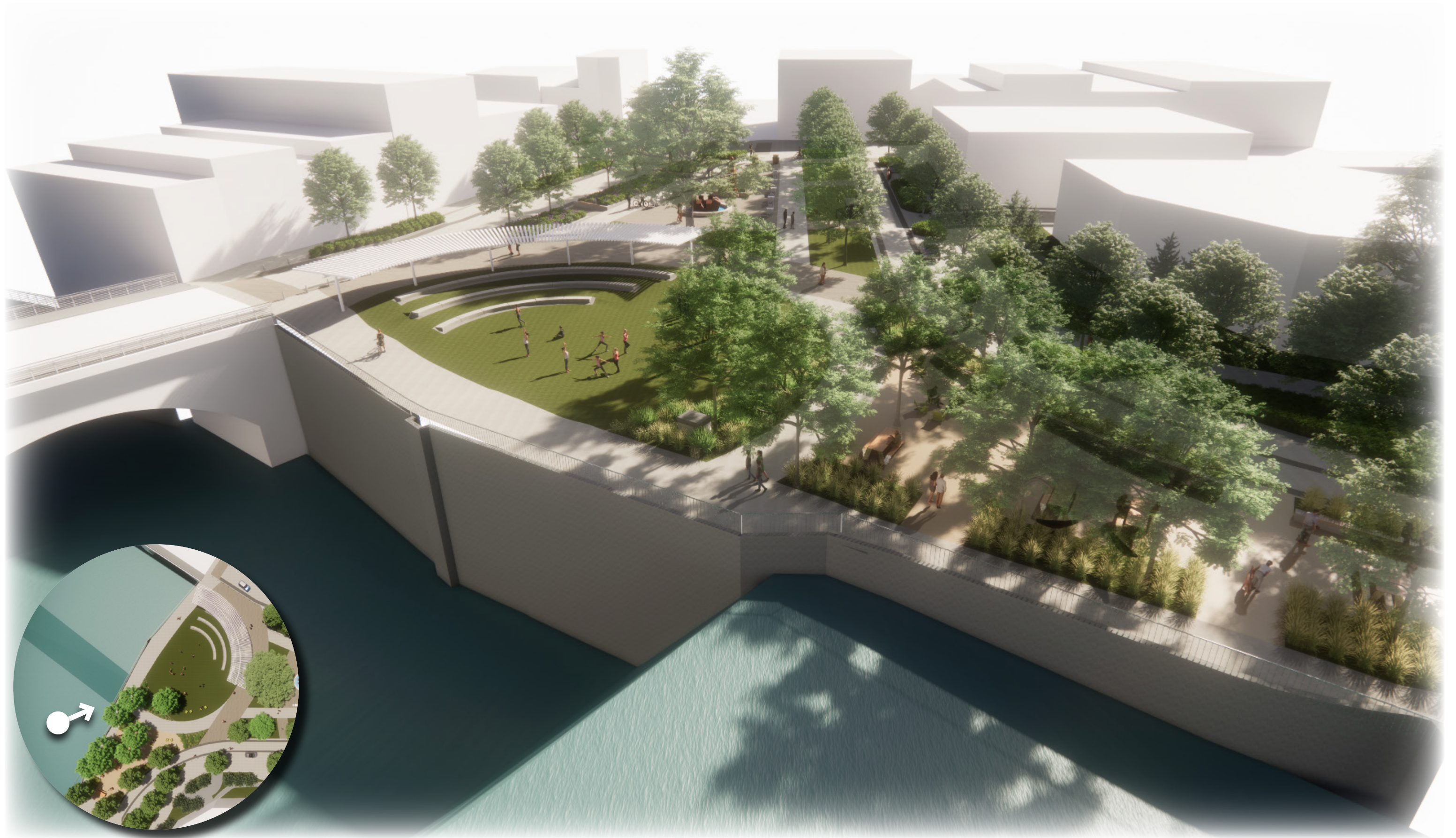


# AERIAL- EXISTING PHOTO



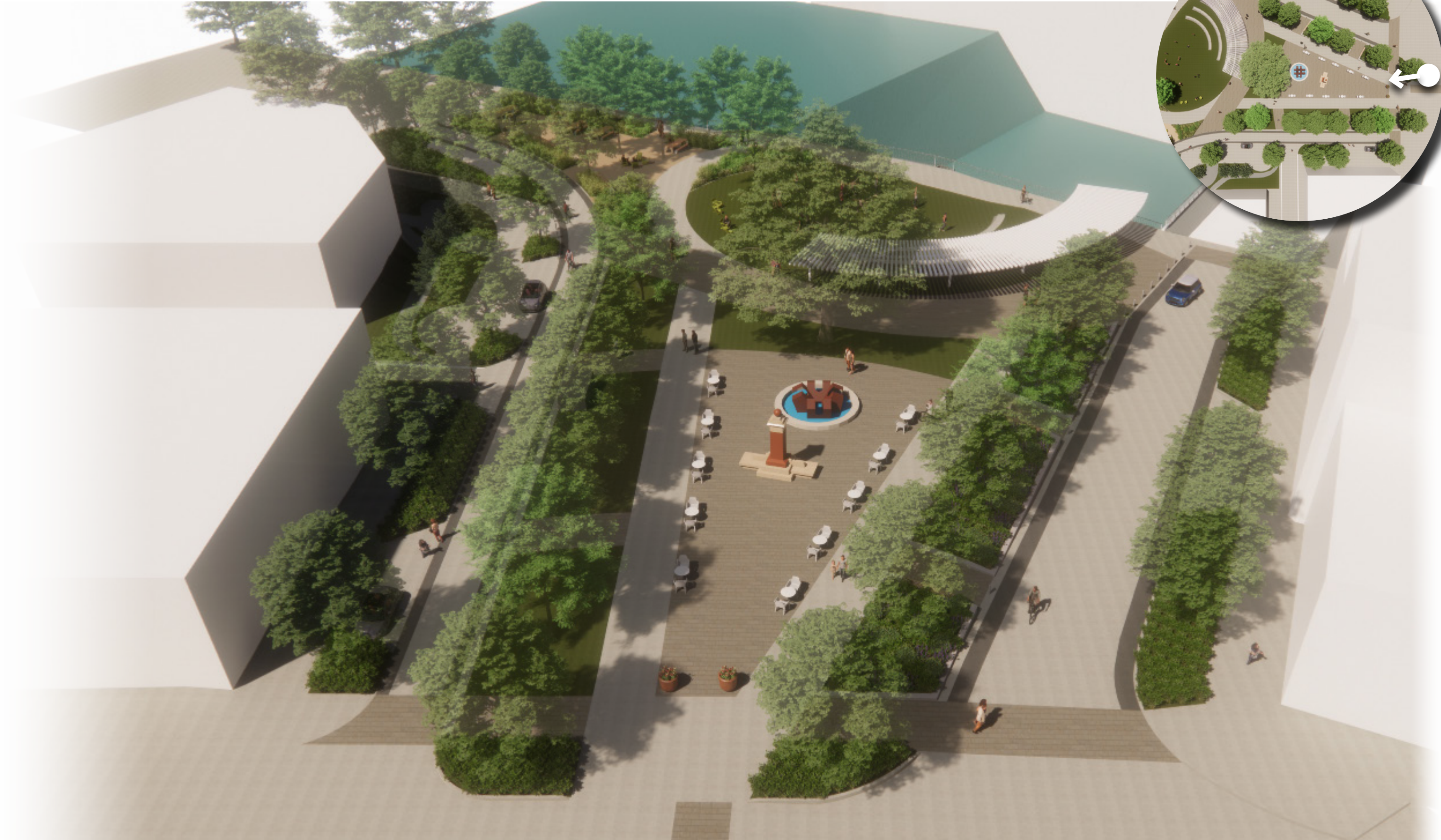


# AERIAL- PROPOSED





# SQUARE- PROPOSED



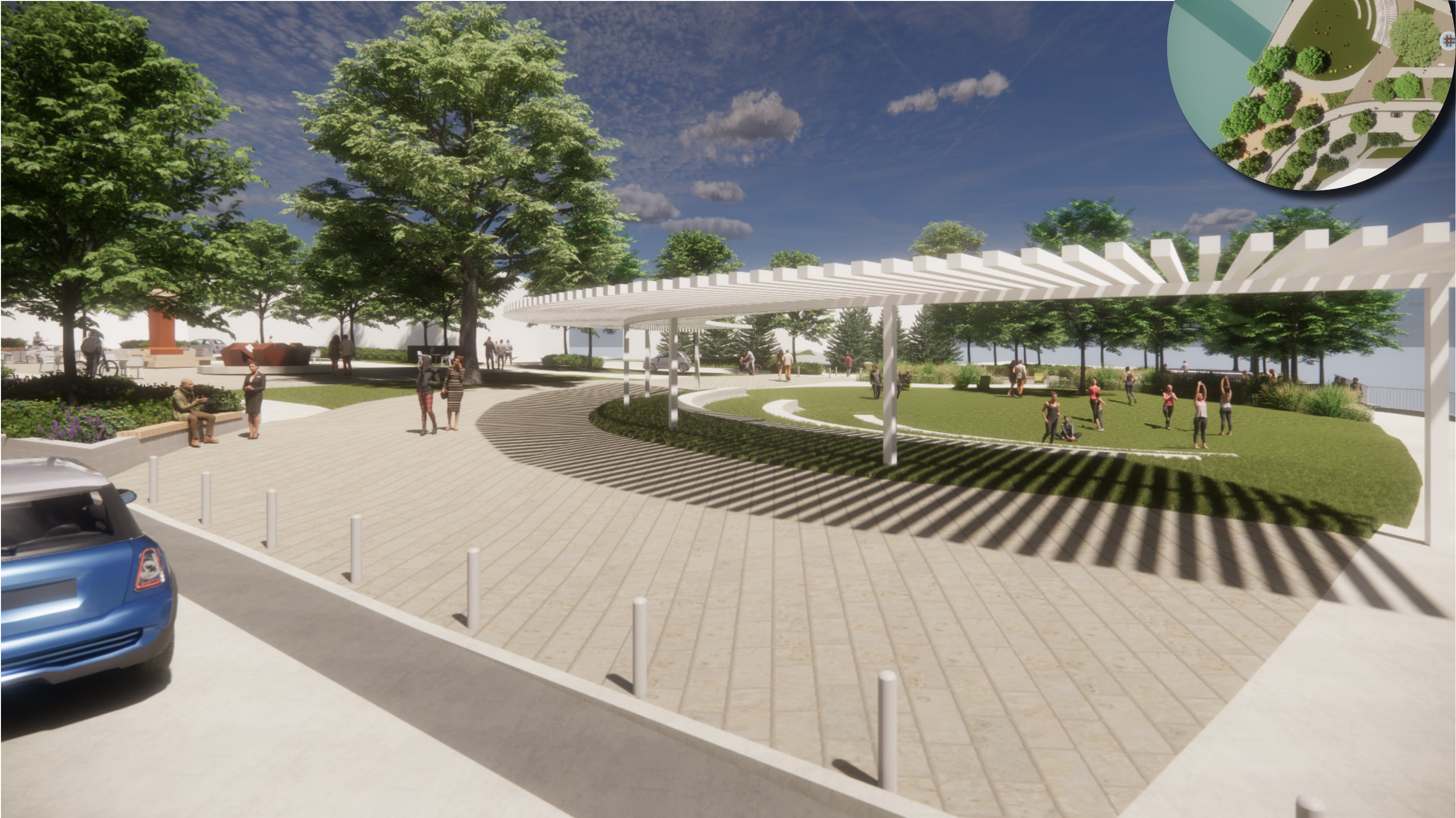


# PARK ENTRY- EXISTING PHOTO





# PARK ENTRY- PROPOSED





# VIEW TO RIVER- EXISTING PHOTO





# VIEW TO RIVER- PROPOSED





# RIVER TERRACE- EXISTING PHOTO





# RIVER TERRACE- PROPOSED





# SOUTH ENTRY / LIVING STREET- EXISTING PHOTO





# SOUTH ENTRY / LIVING STREET – PROPOSED



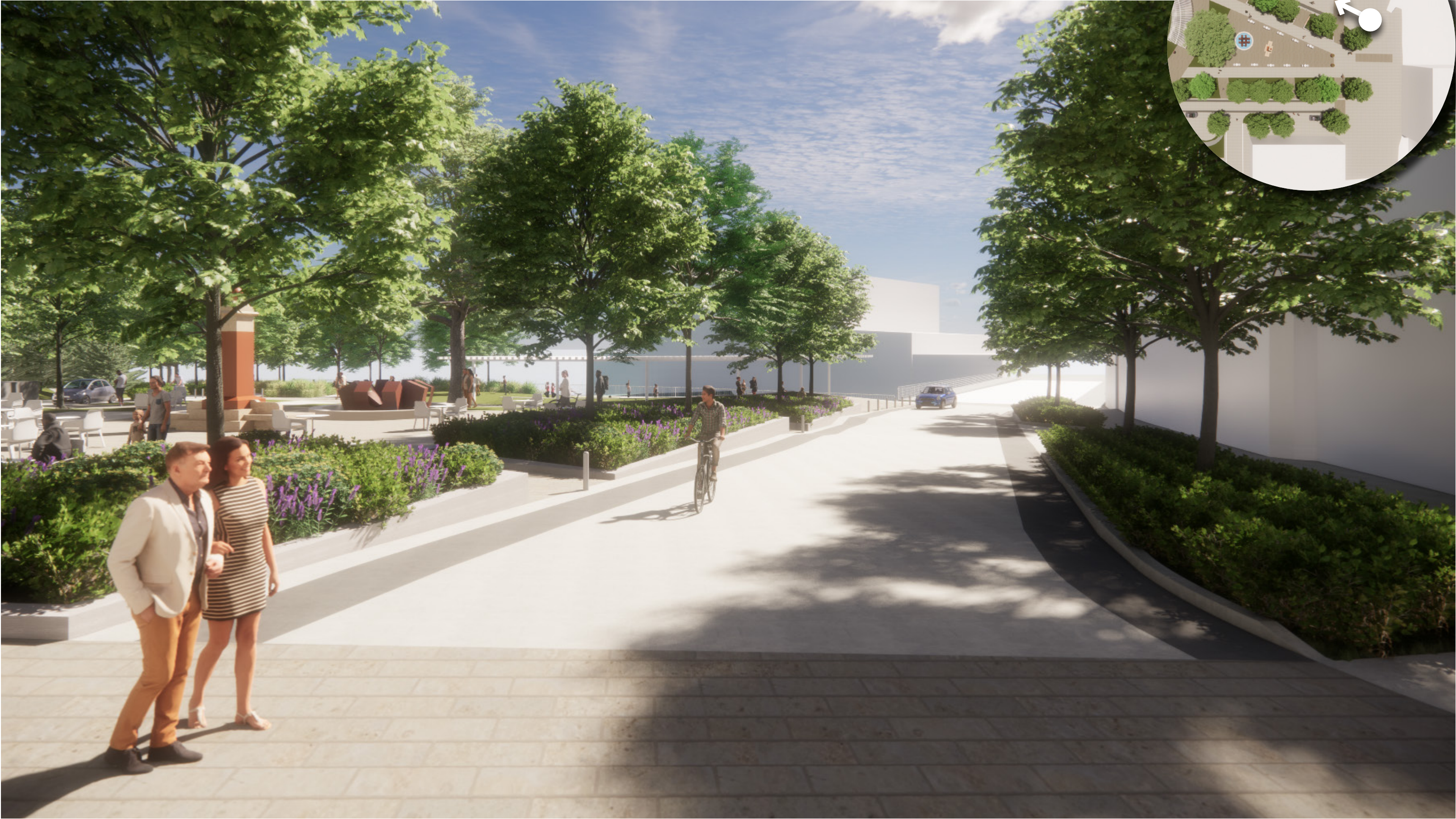


# LIVING STREET- EXISTING PHOTO



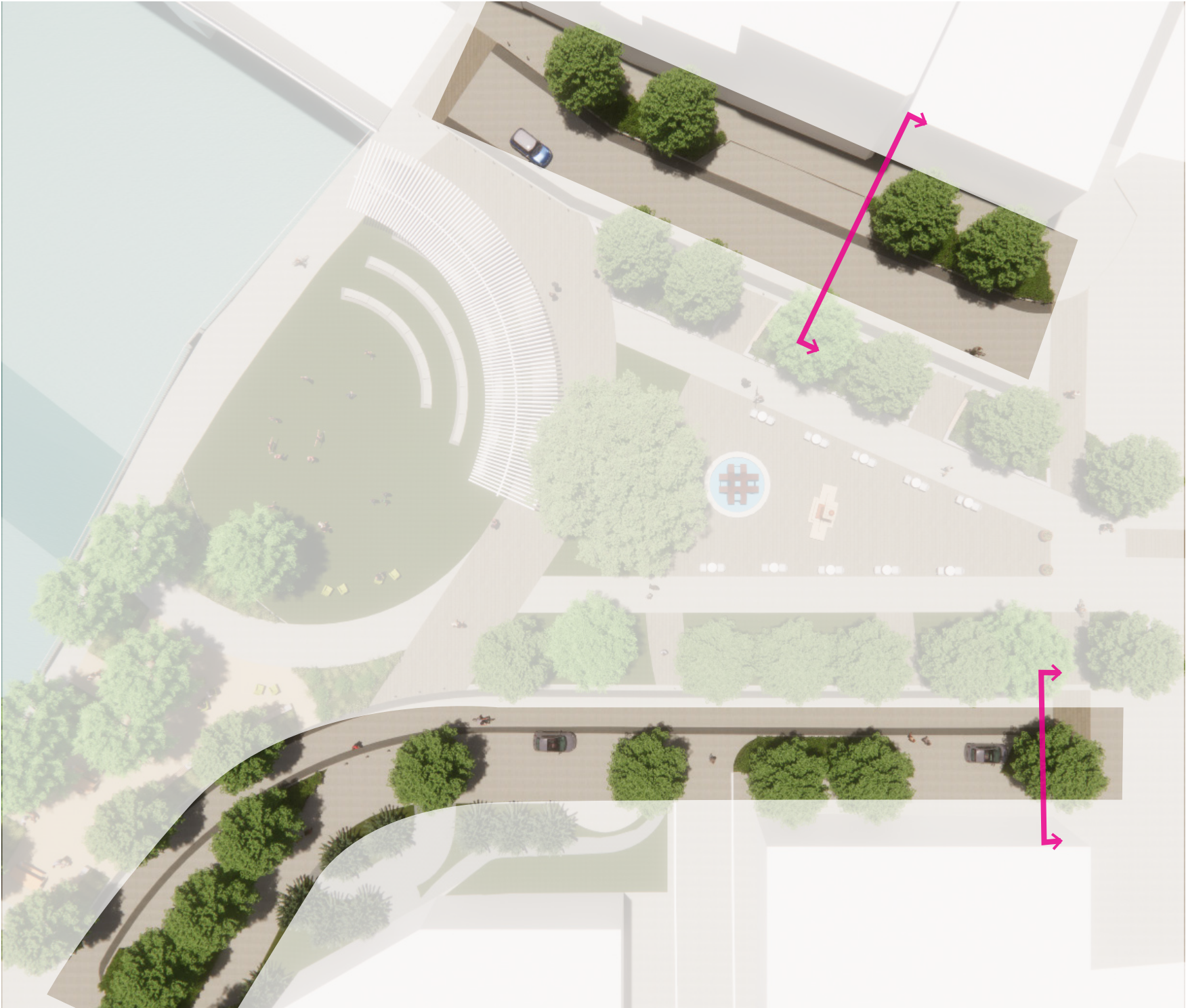


# LIVING STREET- PROPOSED





# LIVING STREETS | STORMWATER MANAGEMENT



stormwater trench



enhanced moments



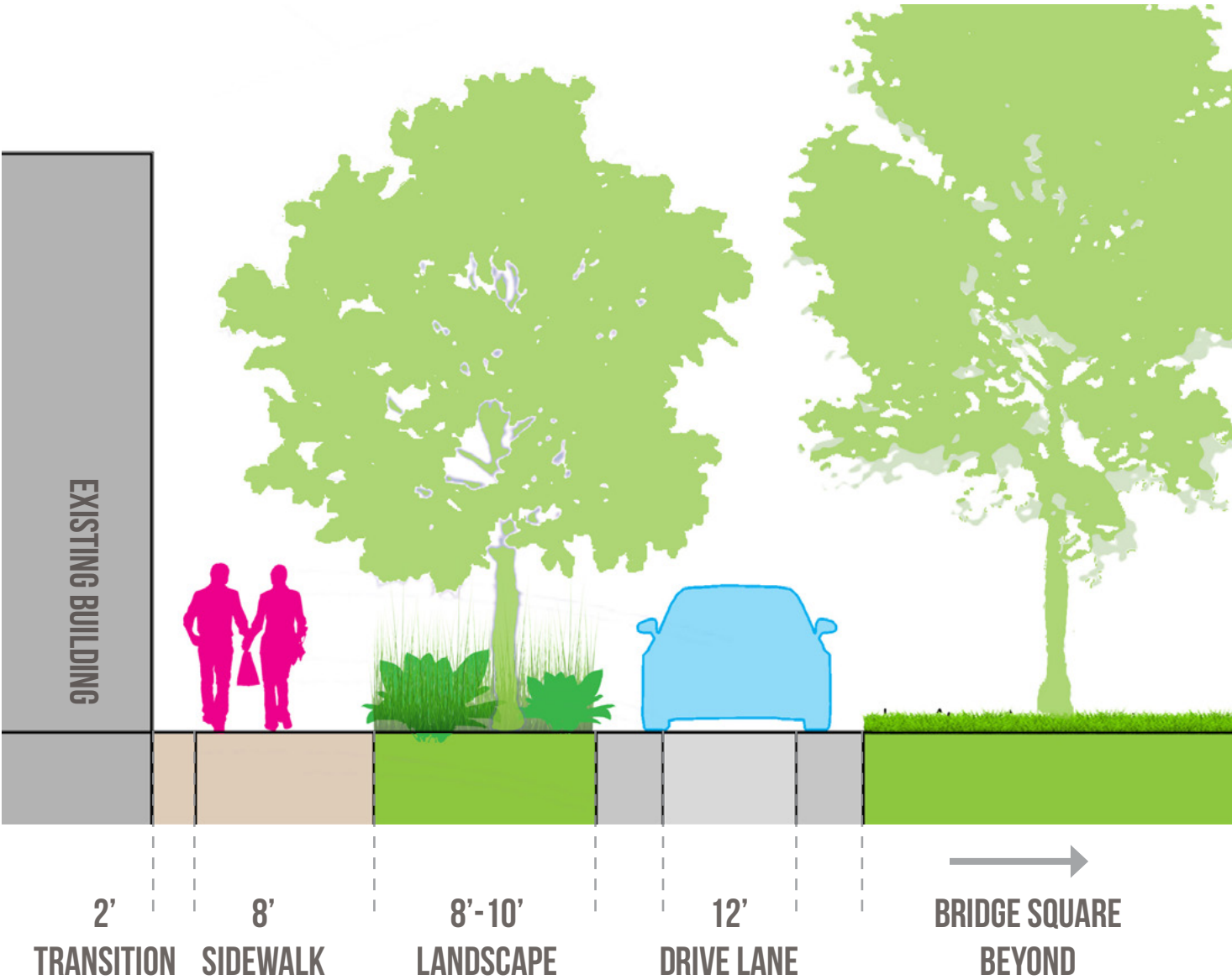
paving extending



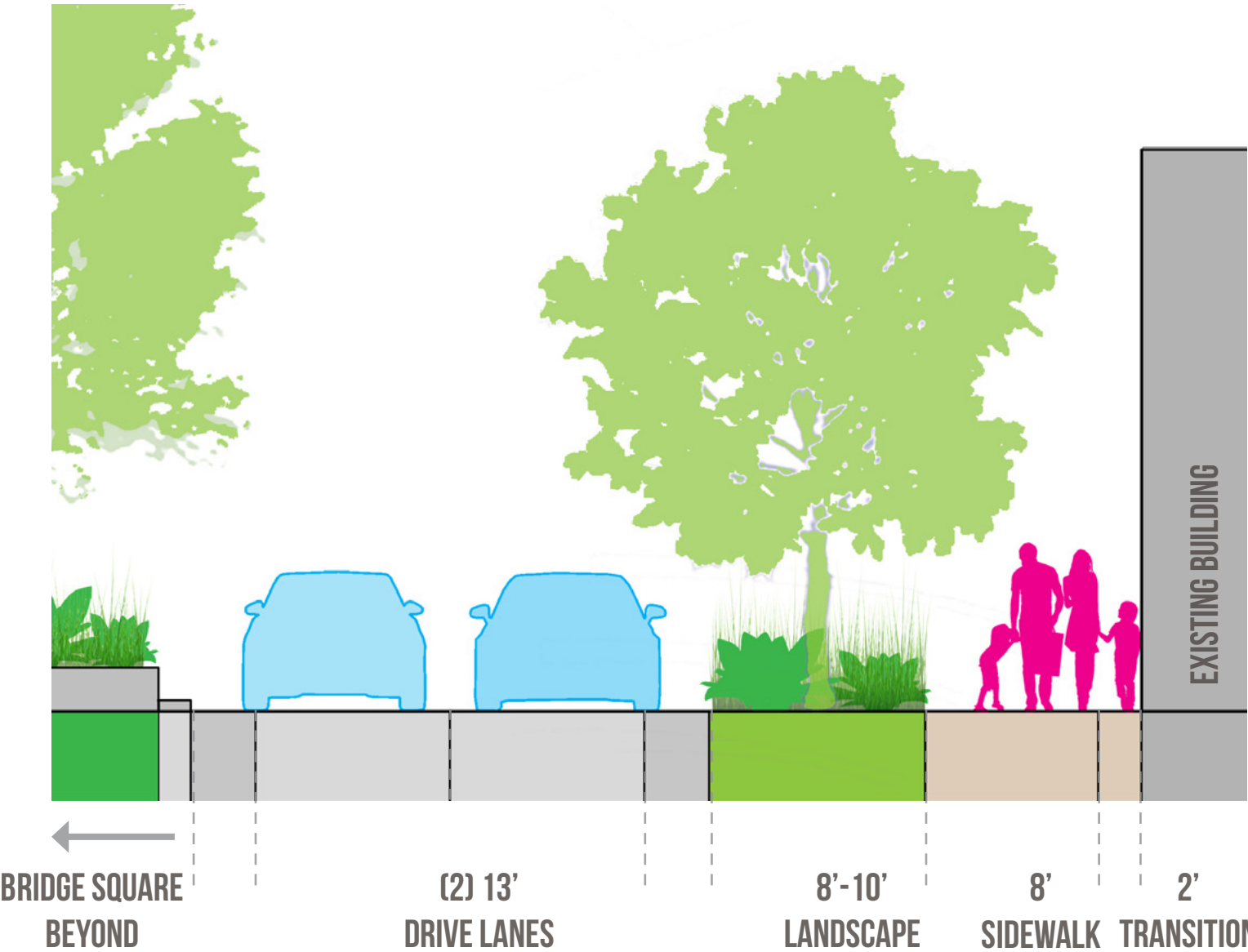


# LIVING STREETS | SECTIONS

BRIDGE SQUARE STREET  
ONE-WAY TRAFFIC

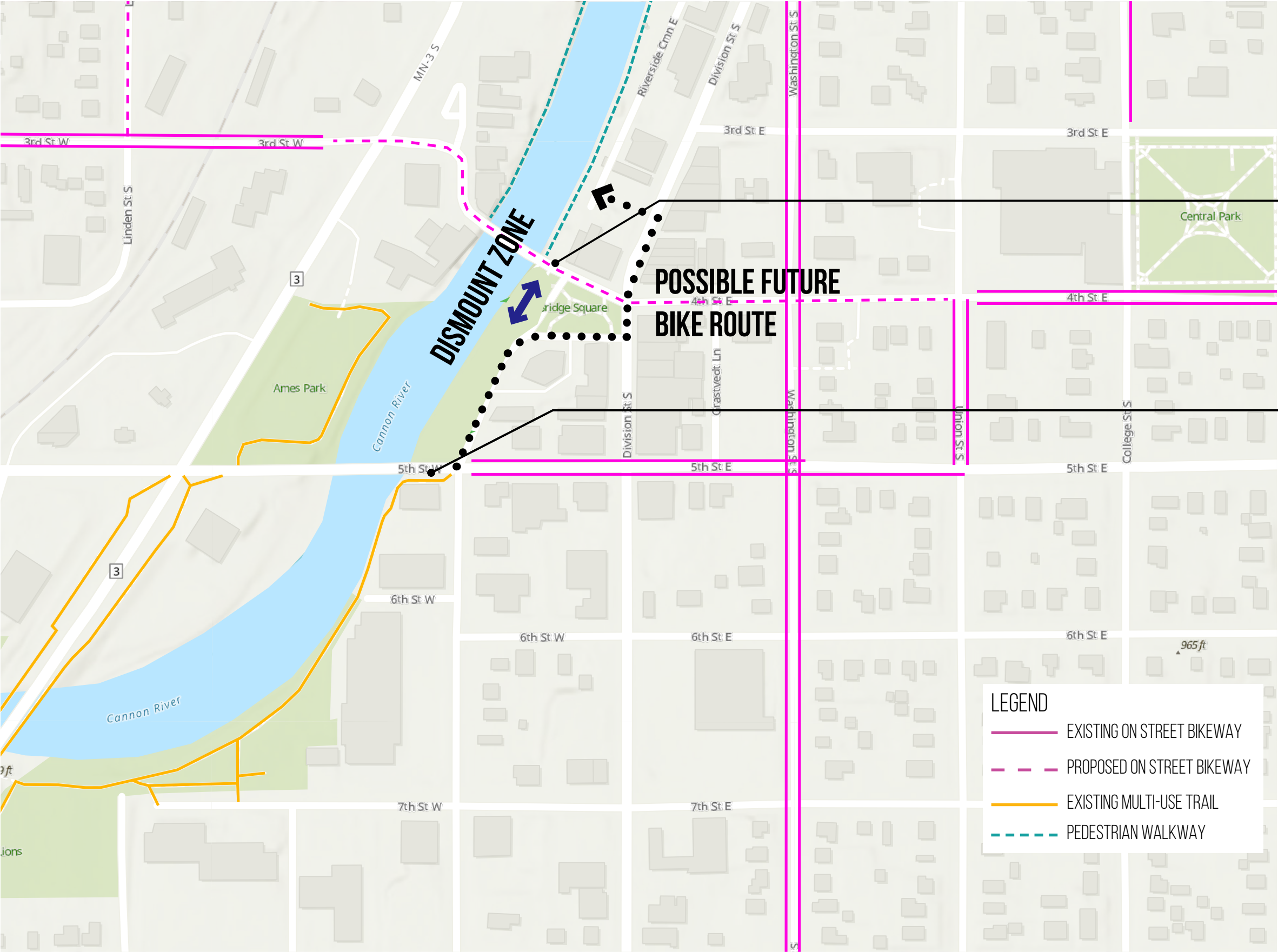


4TH STREET  
TWO-WAY TRAFFIC





# EXISTING + PROPOSED BICYCLE NETWORK



STAIRWAY



MULTI-USE TRAILS  
(9' WIDTH)



# TREE PROTECTION





# PROGRAMMING





# VINTAGE BAND





# RIVERWALK MARKET 76 STALLS





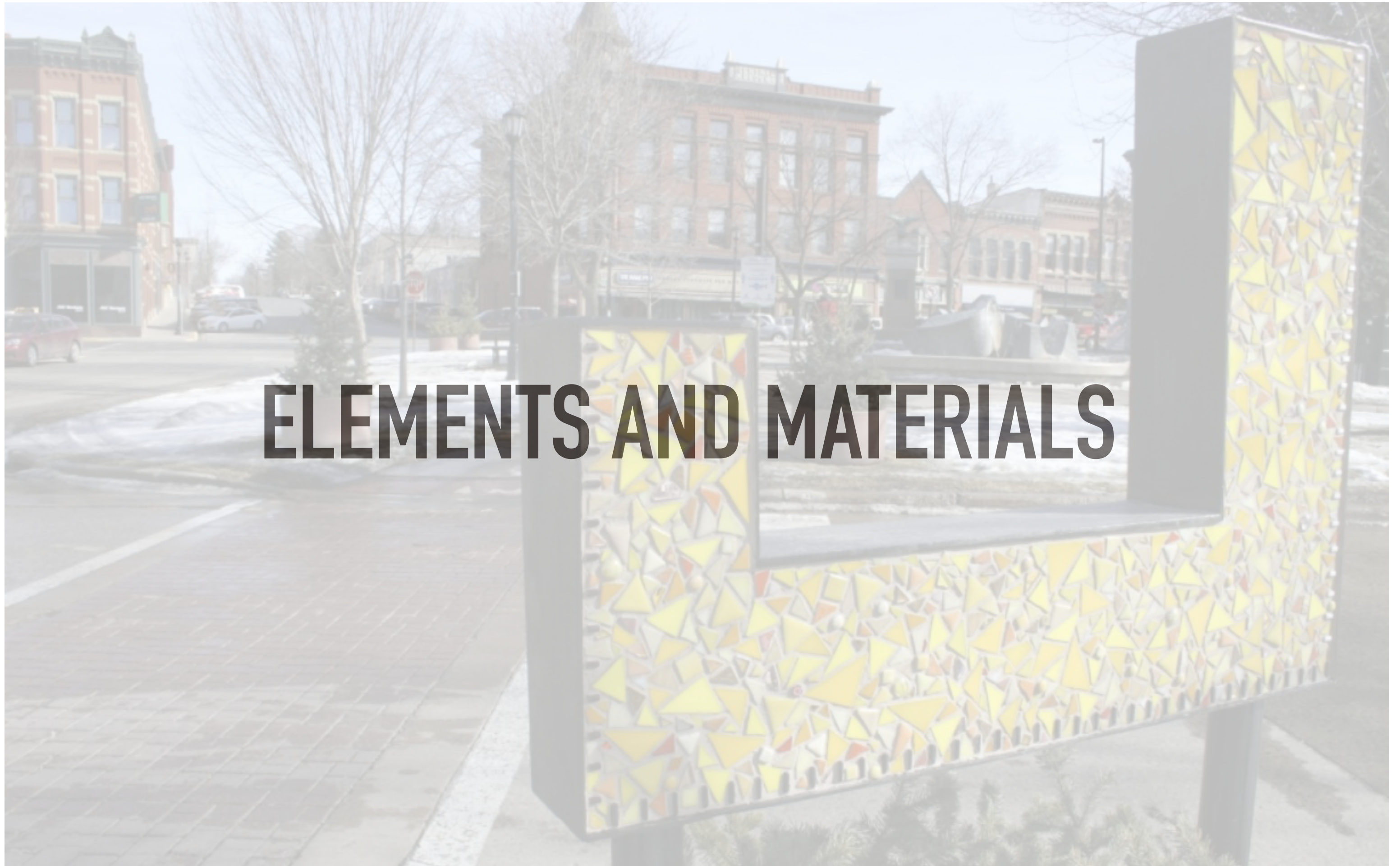
DJJD

106 STALLS/ 13 FOOD TRUCKS



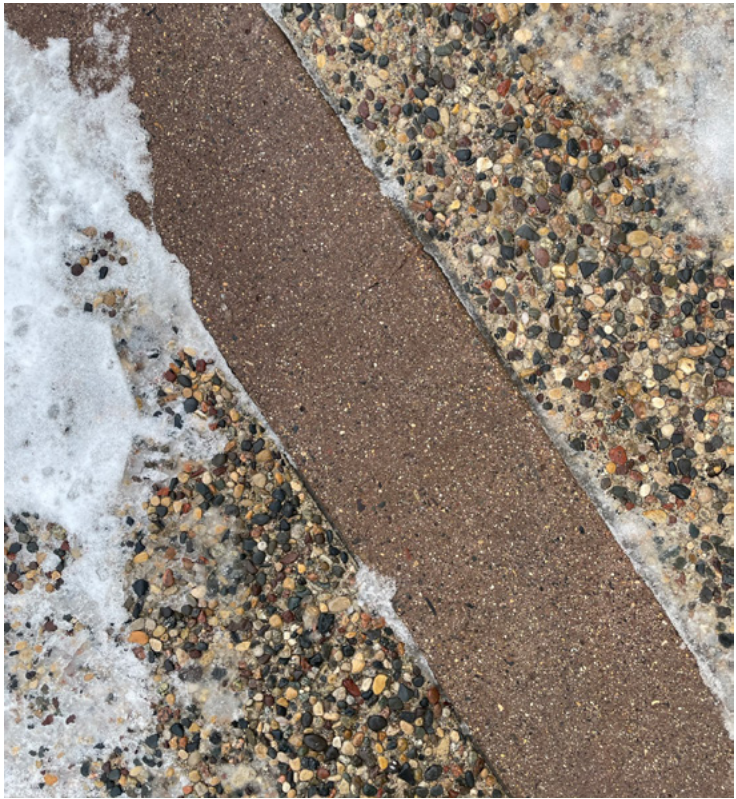


# ELEMENTS AND MATERIALS





# EXISTING MATERIALS



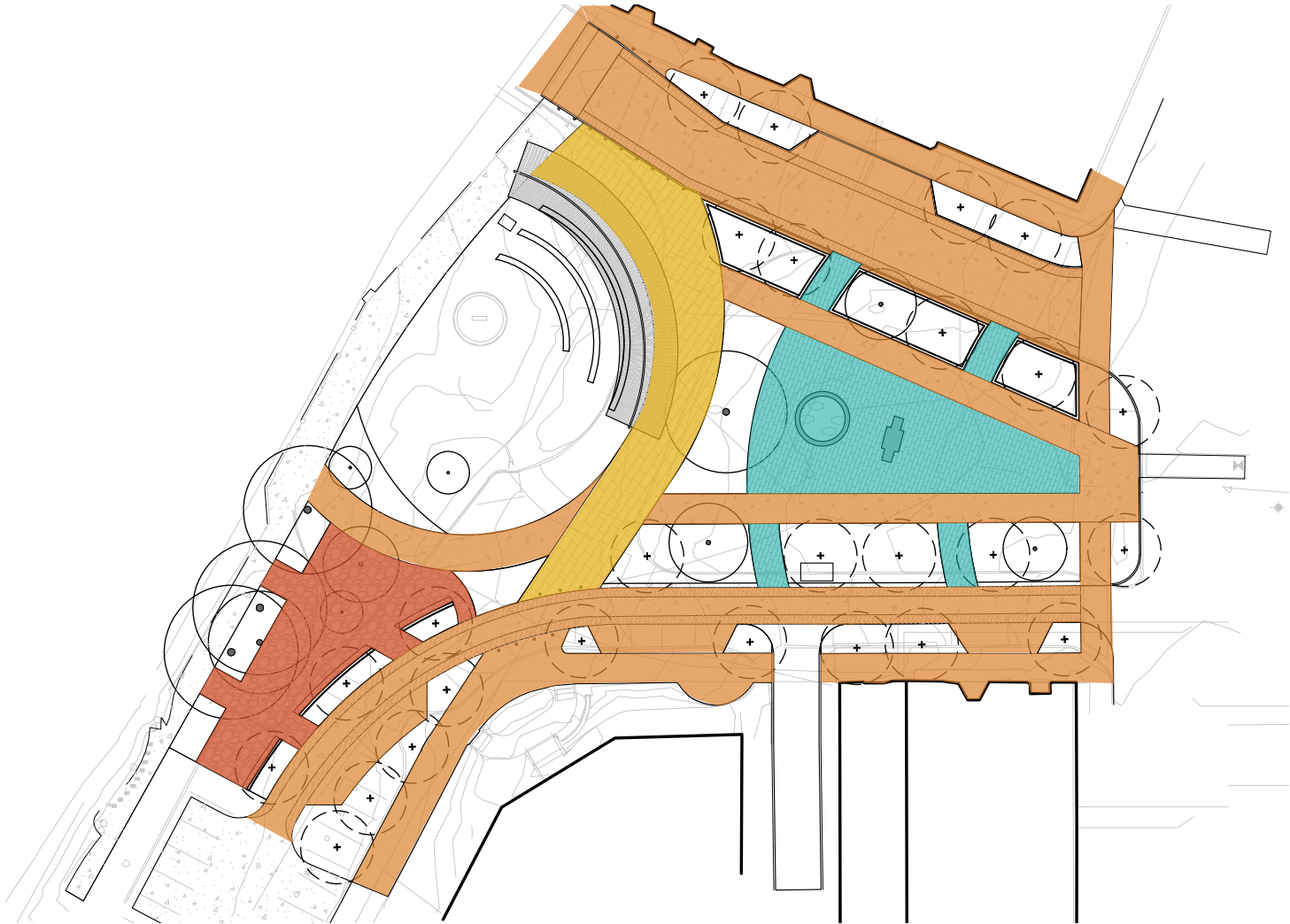
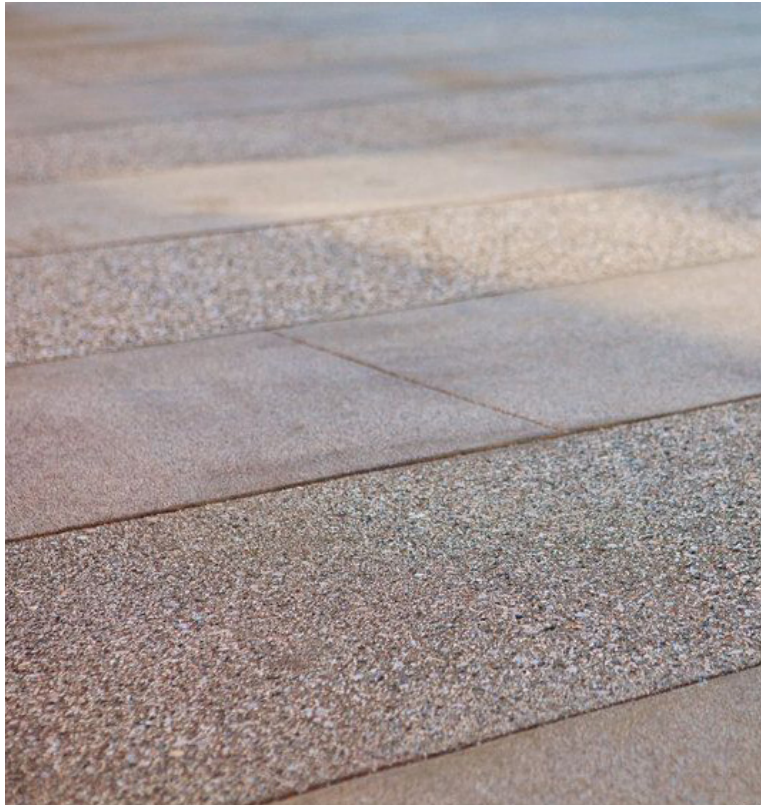


# EXISTING CONDITIONS





# HARDSCAPE PROPOSED



topcast concrete - saw-cut edges

crushed stone



pavers for historic water st

pavers in square



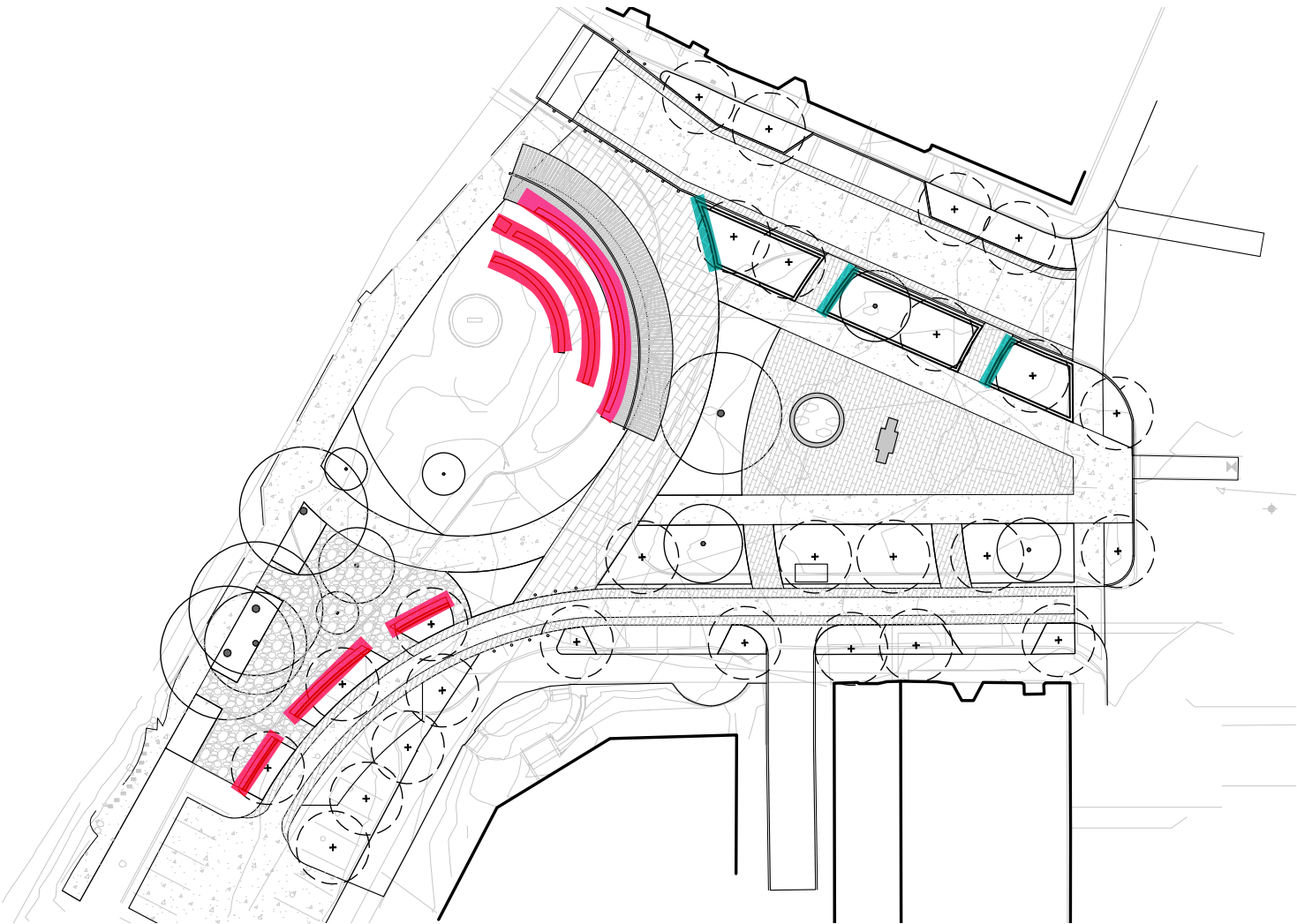
# STRUCTURAL ELEMENTS SEATING



precast - buff  
wall seating



maintenance edge



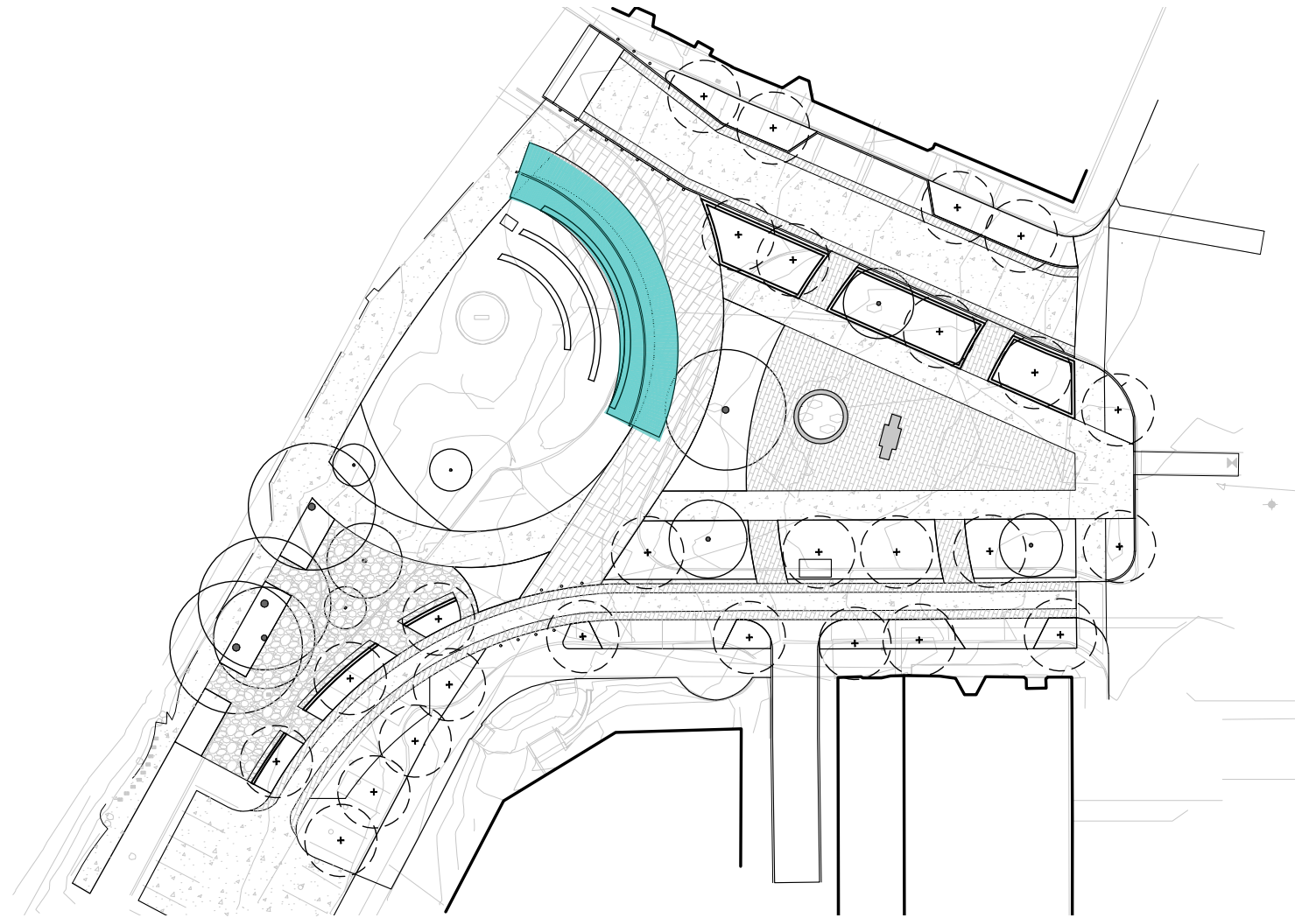
seat walls



# STRUCTURAL ELEMENTS SHADE



aluminum slats



timber slat



solid overhead



# LANDSCAPE ELEMENTS TREES



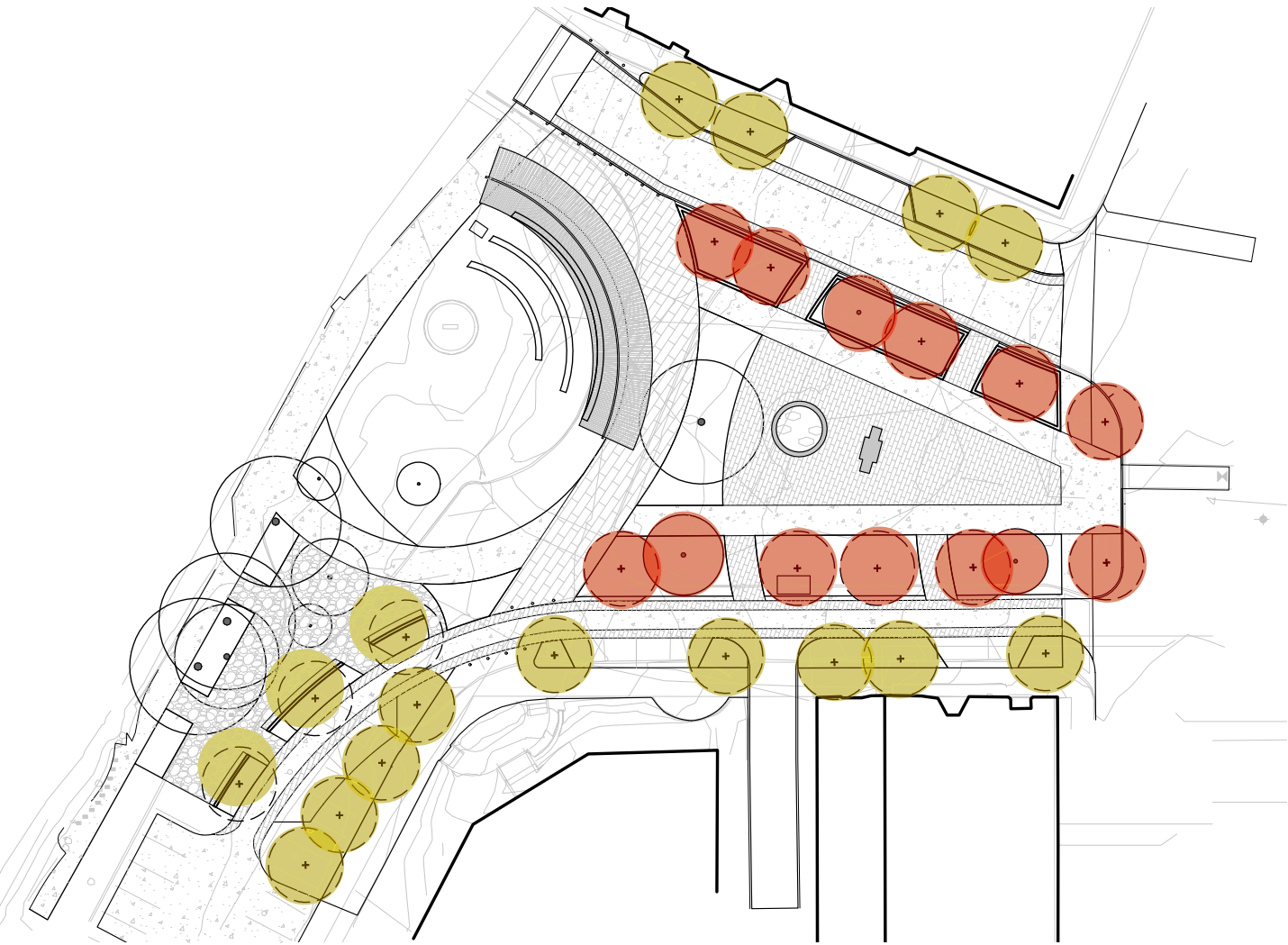
Aspen



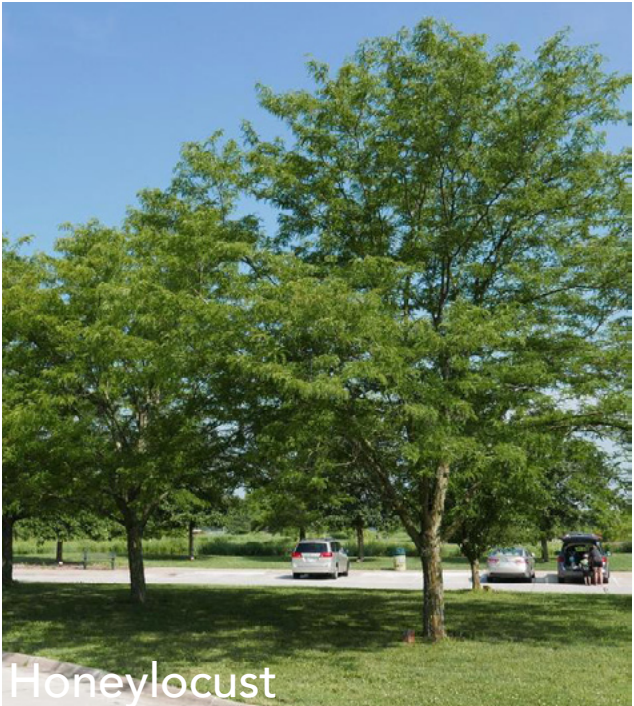
Serviceberry



Catalpa



square trees



Honeylocust



Littleleaf Linden



Kentucky Coffeetree



Hophornbeam

street trees



# LANDSCAPE ELEMENTS

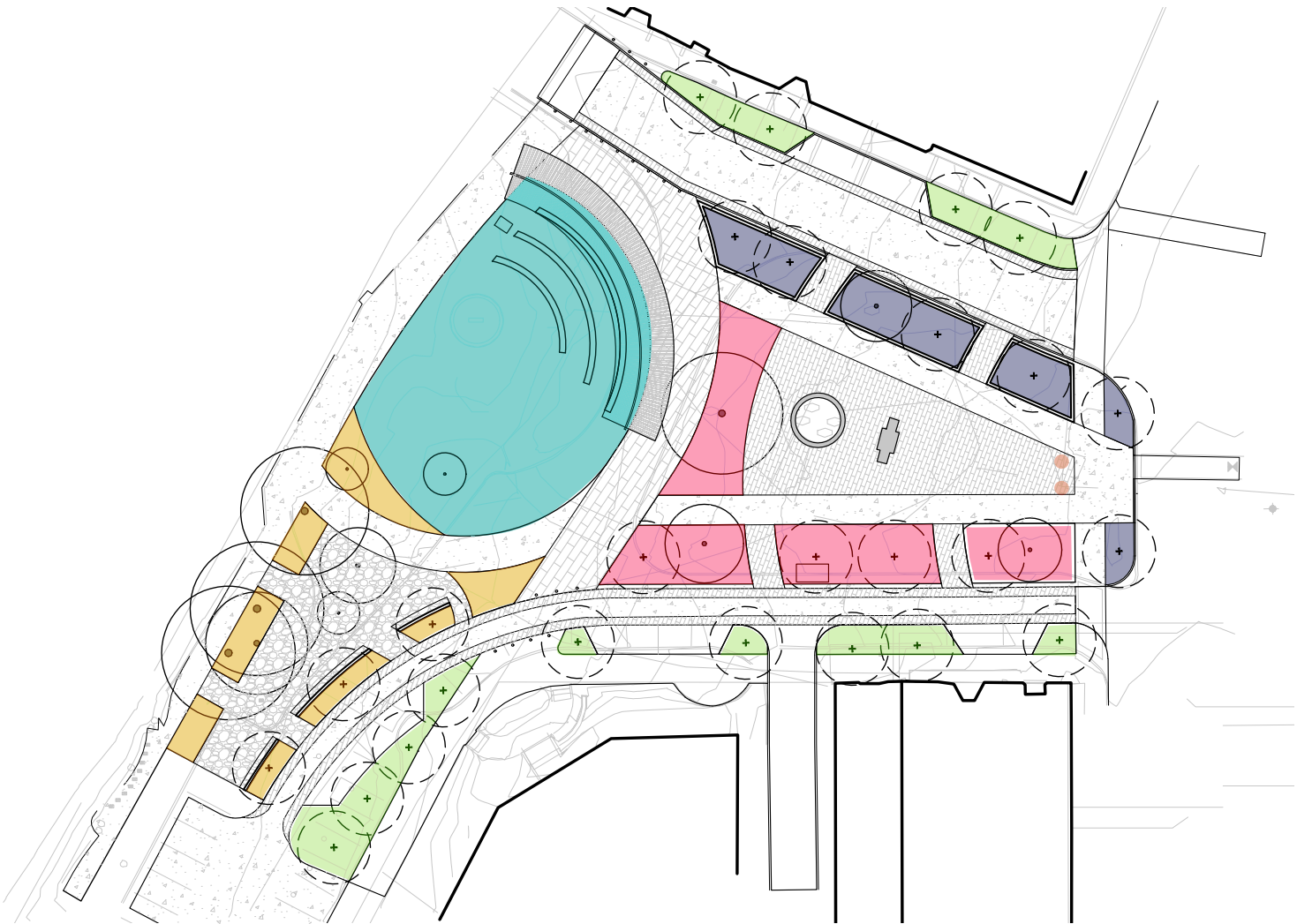
PLANTING



full sun grass



shade perennial



landscape bed



shade tolerant grass



annual planter option

