

# CITY OF NORTHFIELD ENGINEERING DIVISION

## 2017 STREET RECLAMATION PROJECT

### CITY PROJECT 2017STRT-A36

PROFESSIONAL DRIVE	FROM	TH 3 SERVICE ROAD	TO	WOODLEY STREET
MARVIN LANE	FROM	TH 246 (DIVISION STREET)	TO	WASHINGTON STREET
SIBLEY VIEW DRIVE	FROM	JEFFERSON PARKWAY	TO	SIBLEY VIEW COURT
SIBLEY VIEW COURT	FROM	SIBLEY VIEW LANE	TO	CUL-DE-SAC
MAPLE STREET	FROM	WOODLEY STREET	TO	NINTH STREET
NINTH STREET	FROM	MAPLE STREET	TO	NEVADA STREET
NEVADA STREET	FROM	NINTH STREET	TO	SEVENTH STREET
BUNDAY COURT	FROM	NEVADA STREET	TO	CUL-DE-SAC
HILLSIDE COURT	FROM	NEVADA STREET	TO	CUL-DE-SAC

#### RESOURCE LIST

##### CITY OF NORTHFIELD

##### City Hall

801 Washington Street  
Northfield, MN 55057  
507-645-8833

##### City Administrator:

Ben Martig

##### Mayor:

Rhonda Pownell

##### City Council Members:

Suzie Nakasian (1st Ward)  
David DeLong (2nd Ward)  
Erica Zweifel (3rd Ward)  
Jessica Peterson White (4th Ward)  
Brad Ness (At-Large)  
Greg Colby (At-Large)

##### Public Works Director/

##### City Engineer:

David Bennett  
507-645-3006

##### Engineering Manager:

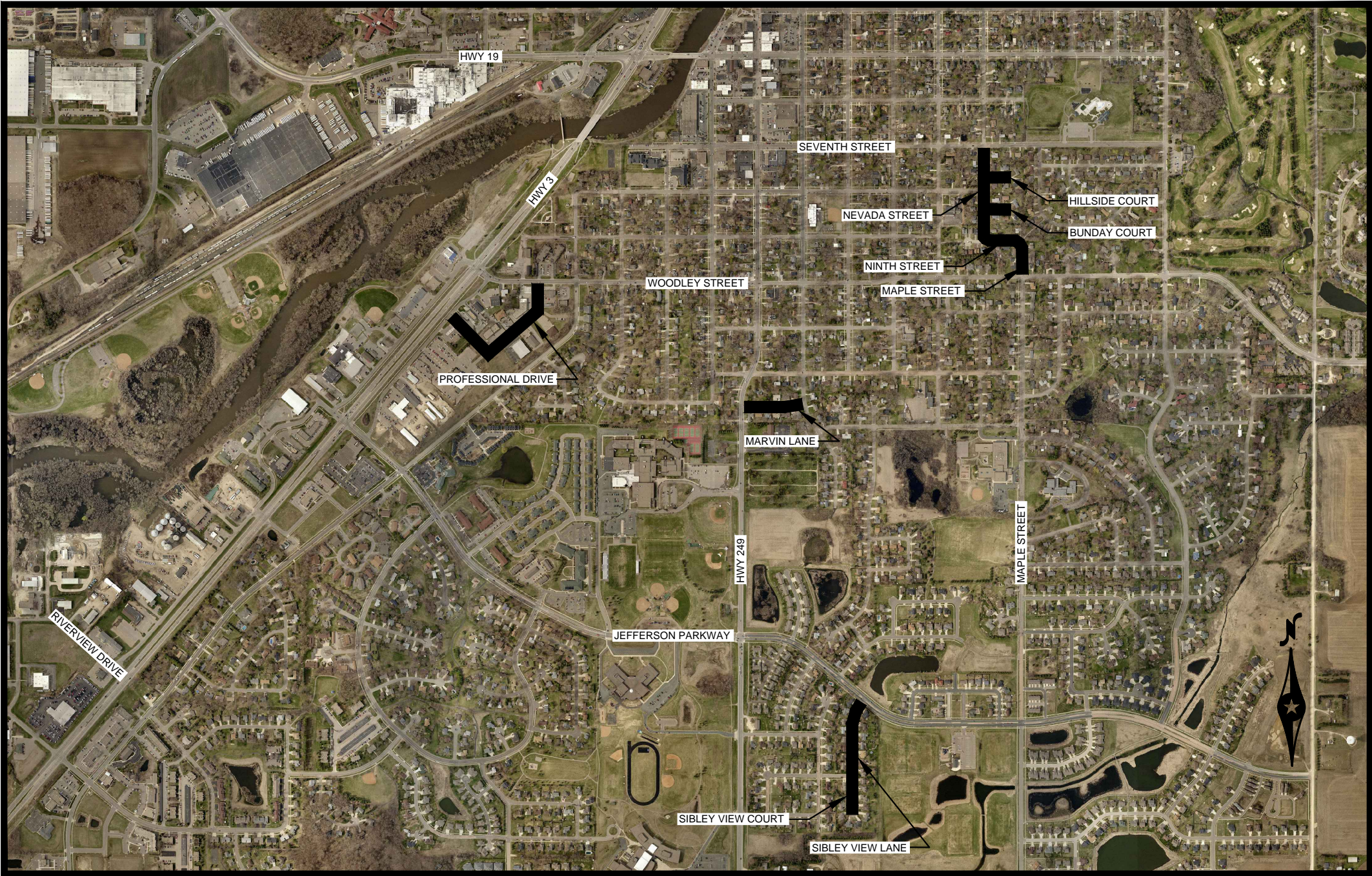
Sean Simonson  
507-645-3049

##### Streets & Parks Manager

Tim Behrendt  
507-645-3027

##### Utilities Manager

Justin Wagner  
507-645-3083



#### GOVERNING SPECIFICATIONS

THE 2016 EDITION OF THE MINNESOTA DEPARTMENT OF TRANSPORTATION STANDARD SPECIFICATION FOR CONSTRUCTION DIVISIONS II & III & THE SUPPLEMENTAL SPECIFICATIONS.

ALL TRAFFIC CONTROL DEVICES SHALL BE INSTALLED IN ACCORDANCE TO THE "MINNESOTA MANUAL ON UNIFORM TRAFFIC CONTROL DEVICES" (MMUTCD)

THE 2011 EDITION OF "STANDARD CONTRACT DOCUMENTS AND TECHNICAL SPECIFICATIONS FOR UTILITY AND STREET CONSTRUCTION FOR CITY OF NORTHFIELD, MINNESOTA.

#### SHEET INDEX

G001	TITLE
G002	LEGEND
C001-C014	TYPICAL SECTIONS & DETAILS
C100-C106	REMOVAL PLAN
C200-C208	STORM WATER POLLUTION PREVENTION PLAN
C400-C401	UTILITY PLAN
C600-C606	RECLAMATION PLAN
C700-C711	CROSS SECTIONS

THIS PLAN CONTAINS 53 SHEETS

#### NOTE:

EXISTING UTILITY INFORMATION SHOWN ON THIS PLAN HAS BEEN PROVIDED BY THE UTILITY OWNER. THE CONTRACTOR SHALL FIELD VERIFY EXACT LOCATIONS PRIOR TO COMMENCING CONSTRUCTION AS REQUIRED BY STATE LAW. NOTIFY GOPHER STATE ONE-CALL AT 1-800-252-1166 OR 651-454-0002.

THE SUBSURFACE UTILITY INFORMATION IN THIS PLAN IS UTILITY LEVEL D. THIS UTILITY QUALITY LEVEL WAS DETERMINED ACCORDING TO THE GUIDELINES OF C/ASCE 38-02, ENTITLED "STANDARD GUIDELINES FOR THE COLLECTION AND DEPICTION OF EXISTING SUBSURFACE UTILITY DATA."

#### UTILITIES:

<b>GAS</b> XCEL ENERGY 2763 1st AVENUE NW FARIBAULT, MN 55021 (507) 334-2923 JEFF KNIPPEL	<b>TELEPHONE</b> CENTURY LINK 6244 CEDAR AVE. SOUTH RICHFIELD, MN 55423 (507) 285-2070 SCOTT MACGLASHIN
<b>ELECTRIC</b> XCEL ENERGY 2763 1ST AVE. NE FARIBAULT, MN 55021 (507) 334-2942 JERRY WEISS	<b>CABLE</b> CHARTER COMMUNICATIONS 16900 CEDAR AVENUE SOUTH ROSEMOUNT, MN 55068 (612) 919-1616 CHUCK SNYDER

I HEREBY CERTIFY THAT THIS PLAN WAS PREPARED BY ME OR UNDER MY DIRECT SUPERVISION AND THAT I AM A DULY REGISTERED PROFESSIONAL ENGINEER UNDER THE LAWS OF THE STATE OF MINNESOTA.

SIGNATURE: \_\_\_\_\_  
APPROVED: David E. Bennett, P.E. CITY ENGINEER

DATE: \_\_\_\_\_ XX/XX/XXXX REG. NO. \_\_\_\_\_ 45867

NOTE: DRAWING NOT TO SCALE

DESIGNED	REV.	BY	DATE
N.J.B			
DRAWN			
N.J.B			
CHECKED			
S.M.S			



PUBLIC WORKS  
DEPARTMENT  
ENGINEERING DIVISION

CITY OF NORTHFIELD, MINNESOTA  
2017STRT-A36 – 2017 STREET RECLAMATION PROJECT

TITLE SHEET

SHEET

G001

EXISTING

	IRON PIPE MONUMENT SET		EXHAUST VENT		SOIL BORING
	MONUMENT FOUND		FLAG POLE		SEMAPHORE TRAFFIC LIGHT
	CAST IRON MONUMENT FOUND		FILL PIPE		SPRINKLER HEAD
	STONE MONUMENT FOUND		GAS FILL PIPE		SIGNAL BOX
	BENCH MARK		GAS FILL PIPE		SIGNAL POLE - RR
	AUTO SPRINKLER		GAS VALVE		SIREN
	ANTENNA		GAS METER		TELEPHONE PEDESTAL
	AIR CONDITIONER		ACCESS GRATE		PUBLIC TELEPHONE
	ANCHOR		HANDICAPPED PARKING		TILE INLET
	AIR PUMP		HAND HOLE		TRAFFIC ARM BARRIER
	APRON		HORSE SHOE PIT		TRAFFIC SIGN
	BASKETBALL HOOP		HYDRANT		TRANSMISSION TOWER
	BIRD FEEDER		IRRIGATION CONTROL VALVE		CATV PEDESTAL
	BENCH		LIGHT DECORATIVE		TEST WELL
	BRACE POLE		LIGHT POLE		UTILITY POLE
	CATCH BASIN		MAILBOX		VACUUM
	CLOTHES LINE POLE		METER		VENT PIPE
	CONTROL POINT		POST		DECIDUOUS TREE
	CLEAN OUT		MANHOLE		CONIFEROUS TREE
	CURB STOP VALVE		LIFT STATION MANHOLE		STUMP
	DITCH TOP		MONITORING WELL		BUSH
	DRINKING FOUNTAIN		ORDER MICROPHONE		WELL
	DOWN SPOUT		PARK GRILL		WATER METER
	ELECTRIC METER		GAS PUMP		WATER SPIGOT
	ELECTRIC PEDESTAL		POST INDICATOR VALVE		WATER VALVE
	ELECTRIC TRANSFORMER		PARKING METER		WETLAND / MARSH
			SATELLITE DISH		WETLAND - DELINEATED

PROPOSED

	ALIGNMENT/CENTERLINE
	RIGHT-OF-WAY LINE
	TEMPORARY EASEMENT
	CONSTRUCTION LIMITS
	CURB & GUTTER
	BITUMINOUS EDGE
	CONCRETE EDGE
	GRAVEL EDGE
	SILT FENCE-PREASSEMBLED
	SILT FENCE-HEAVY DUTY
	EROSION PROTECTION AT INLET
	MANHOLE
	CATCH BASIN
	STORM INLET
	APRON
	STORM SEWER
	PERFORATED PIPE DRAIN
	STORM DRAIN TILE
	CULVERT W/APRON
	STORM MANHOLE NUMBER
	SANITARY SEWER
	SANITARY FORCEMAIN
	SANITARY SEWER SERVICE
	SANITARY LIFT STATION
	SANITARY MANHOLE
	SANITARY MANHOLE NUMBER

	WATERMAIN
	WATERMAIN SERVICE
	WATER SYSTEM MANHOLE
	HYDRANT
	HYDRANT W/ VALVE
	VALVE
	CURBSTOP
	BEND
	REDUCER
	CROSS
	TEE
	PLUG
	SLEEVE
	SIGN
	LIGHT POLE
	GUARD RAIL
	SOIL BORING
	WETLAND
	BUSH
	CONIFEROUS TREE
	DECIDUOUS TREE

	OVERHEAD ELECTRIC LINE		ADJACENT LINES
	UNDERGROUND ELECTRIC LINE		EASEMENT LINE
	GAS LINE		BUILDING SETBACK LINE
	FIBER OPTIC LINE		FENCE LINE
	TELEPHONE FIBER OPTIC		GUARD RAIL
	UNDERGROUND TELEPHONE LINE		ACCESS CONTROL LINE
	OVERHEAD CATV LINE		CENTERLINE
	UNDERGROUND CATV LINE		PROPERTY / LOT LINE
	WATER SYSTEM		ROAD RIGHT-OF-WAY LINE
	STORM SEWER		RAILROAD RIGHT-OF-WAY LINE
	TILE LINE		GRAVEL EDGE
	SANITARY SEWER		BITUMINOUS EDGE
	SANITARY FORCEMAIN		CONCRETE EDGE
	CULVERT		CURB & GUTTER
	INTERMEDIATE CONTOURS		WATER EDGE
	INDEX CONTOURS		WATER CENTERLINE
	COUNTY LINE		HIGHWATER LINE
	CITY LIMITS		WETLAND EDGE
	SIXTEENTH LINE		SWALE CENTERLINE
	QUARTER LINE		RAILROAD TRACKS
	SECTION LINE		TREE LINE EDGE

TRAFFIC CONTROL AND STRIPING NOTES:

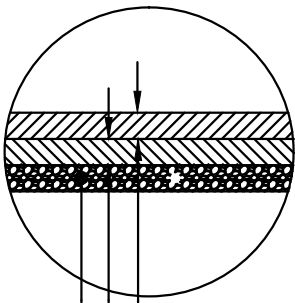
- 1.) ALL PERMANENT PAVEMENT MARKINGS ARE TO BE EPOXY. CONTRACTOR IS RESPONSIBLE FOR LAYING OUT THE PROPOSED STRIPPING.
- 2.) TEMPORARY PAVEMENT MARKING CAN BE PAINT AND SHALL CONFORM TO THE STRIPING PLAN AND BE INCIDENTAL TO THE PROJECT.
- 3.) ALL TRAFFIC CONTROL MEASURES SHALL CONFORM TO THE LATEST VERSION OF THE MMUTCD MANUAL.
- 4.) ALL ACCESS POINTS TO THE PROJECT THAT ARE UNDER CONSTRUCTION SHALL HAVE A MINIMUM OF 3 TYPE 3 BARRICADES WITH FLASHERS. AT LEAST 1 TYPE III BARRICADE SHALL HAVE A ROAD CLOSED TO THRU TRAFFIC PLACARD.
- 5.) ALL CLOSED ROADS SHALL HAVE ADVANCED WARNING SIGNS WITH FLASHERS PLACED AT ADJOINING INTERSECTIONS TO THE PROJECT AREA.
- 6.) AFTER RECLAMATION OPERATIONS HAVE BEEN COMPLETED, ALL EXISTING MANHOLES AND GATE VALVES SHALL HAVE A BARREL EQUIPPED WITH A FLASHER OR TYPE II FLASHING BARRICADE PLACED ON TOP. CONES WILL NOT BE ACCEPTABLE.
- 7.) ADDITIONAL TRAFFIC CONTROL DEVICES MAY BE REQUIRED BY THE ENGINEER AND SHALL BE INCIDENTAL TO THE PROJECT.

REMOVAL NOTES:

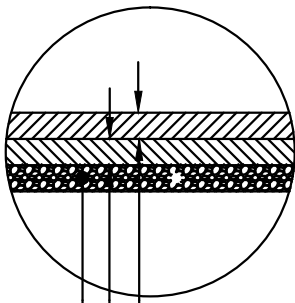
- 1.) ALL EXISTING DRIVEWAYS, STREET SURFACING, SIDEWALKS, AND CURB & GUTTER SHALL BE REMOVED TO THE REMOVAL LIMITS MARKED IN THE FIELD BY THE ENGINEER UNLESS OTHERWISE NOTED ON THE PLANS. ALL CONCRETE AND BITUMINOUS SHALL BE SAW CUT PRIOR TO REMOVING, ALL CONCRETE TO BE SAW CUT TO THE NEAREST JOINT. ALL SAW CUTS SHALL BE INCIDENTAL TO REMOVAL ITEMS.
- 2.) EXISTING SANITARY SEWER LINES, STORM SEWER LINES, STORM MANHOLES, SANITARY MANHOLES, CATCH BASINS, AND CATCH BASIN MANHOLES SHALL BE REMOVED TO THE CONSTRUCTION LIMITS OR AS NOTED ON THE PLANS. ABOVE ITEMS SHALL BE REMOVED AND DISPOSED OF BY THE CONTRACTOR.
- 4.) THE CONTRACTOR SHALL TAKE SPECIAL CARE NOT TO DAMAGE ANY TREES OR BUSHES. TREES AND BUSHES TO BE REMOVED WILL BE MARKED BY THE ENGINEER IN THE FIELD. ANY ROOTS EXPOSED OR REMOVED BY EXCAVATION SHALL BE IMMEDIATELY SAW CUT AND SEALED TO PREVENT FURTHER DAMAGE TO THE TREE. ROOTS SHALL NOT BE LEFT EXPOSED WITHOUT SOIL COVER FOR MORE THAN 24 HOURS.
- 5.) THE CONTRACTOR SHALL STRICTLY CONFINE ALL CONSTRUCTION ACTIVITIES TO THE CONSTRUCTION LIMITS DELINEATED ON THE PLANS.
- 6.) EXISTING SIDEWALKS AND DRIVEWAYS SHALL NOT BE REMOVED PRIOR TO 72 HOURS BEFORE THEIR REPLACEMENT. TEMPORARY SIDEWALK OR DRIVEWAY AGGREGATE MAY BE REQUIRED IF THERE IS A DELAY BETWEEN REMOVAL AND REPLACEMENT ACTIVITIES. ALL COSTS ASSOCIATED WITH PROVIDING TEMPORARY SIDEWALKS OR DRIVEWAYS SHALL BE CONSIDERED INCIDENTAL TO THE PROJECT.
- 7.) STREET NAME SIGNS LOCATED ON THE PROJECT SHALL REMAIN IN PLACE AS LONG AS POSSIBLE UNLESS TRAFFIC CONTROL NECESSITATES REMOVAL. EXISTING STREET SIGNS MAY BE REQUIRED TO BE RESET DURING PHASES OF CONSTRUCTION FOR PUBLIC SAFETY.
- 8.) ALL KNOWN UTILITIES ARE SHOWN ON THE PLAN, ADDITIONAL UTILITIES MAY BE PRESENT WITHIN THE CONSTRUCTION LIMITS. IT IS THE CONTRACTORS RESPONSIBILITY TO LOCATE AND PROTECT EXISTING UTILITIES. NO ADDITIONAL COMPENSATION WILL BE GIVEN FOR WORKING AROUND KNOWN AND UNKNOWN UTILITIES.
- 9.) THE CONTRACTOR SHALL BE RESPONSIBLE FOR THE REMOVAL, TEMPORARY PLACEMENT, MAINTENANCE AND REINSTALLATION OF ALL MAIL BOXES WITHIN THE PROJECT AREA AND WILL BE CONSIDERED INCIDENTAL TO TRAFFIC CONTROL FOR THE PROJECT.
- 10.) THE CONTRACTOR SHALL REPLACE ANY DAMAGED SPRINKLER SYSTEMS AT THE UNIT PRICE BID.IRRIGATION SYSTEMS OUTSIDE DISTURBANCE AREA SHOULD BE PROTECTED NO COMPENSATION FOR THOSE REPAIRS.

CONSTRUCTION NOTES:

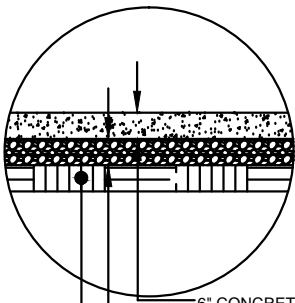
- 1.) MATCH ALL EXISTING CURB AND GUTTER, SIDEWALK, AND BITUMINOUS. MATCH POINT WILL BE DETERMINED IN THE FIELD BY THE ENGINEER.
- 2.) ALL RADII SHALL BE 20' UNLESS NOTED DIFFERENTLY ON THE PLANS.
- 3.) EXISTING UTILITIES DO EXIST WITHIN THE CONSTRUCTION LIMITS, KNOWN UTILITIES ARE MARKED ON THE PLAN, IT WILL BE THE RESPONSIBILITY OF THE CONTRACTOR TO COORDINATE ALL CONSTRUCTION ACTIVITIES WITH ALL UTILITIES COMPANIES EXISTING AND PROPOSED FACILITIES. NO ADDITIONAL COMPENSATION WILL BE ALLOWED FOR ANY ADDITIONAL WORK OR DELAYS CAUSED BY THE WORK OF UTILITY COMPANIES.
- 4.) NEW DRIVEWAY LOCATIONS WILL BE DETERMINED IN THE FIELD BY THE ENGINEER, NEW DRIVEWAYS SHALL NOT EXCEED 10% GRADE AT ANY POINT. IT IS THE RESPONSIBILITY OF THE CONTRACTOR TO ESTABLISH AND CONFORM TO REQUIRED GRADES.
- 5.) NEW SIDEWALK LOCATIONS WILL BE DETERMINED IN THE FIELD BY THE ENGINEER, NEW SIDEWALKS SHALL NOT EXCEED A 5% GRADE AT ANY POINT LONGITUDINALLY OR 1.5% CROSS SLOPE. IT IS THE RESPONSIBILITY OF THE CONTRACTOR TO ESTABLISH AND CONFORM TO REQUIRED GRADES.
- 6.) NEW PEDESTRIAN RAMPS WILL BE LOCATED IN THE FIELD BY THE ENGINEER, RAMPS SHALL BE CONSTRUCTED IN ACCORDANCE WITH TYPICAL DETAILS LOCATED IN THE CITY STANDARD TECHNICAL SPECIFICATIONS, ADA REQUIREMENTS, MNDOT STANDARD PLATES, AND PROWAG.
- 7.) RETAINING WALL LOCATION AND HEIGHT TO BE DETERMINED IN THE FIELD BY THE ENGINEER.
- 8.) TEMPORARY PEDESTRIAN AND VEHICLE CROSSINGS SHALL BE INSTALLED BY THE CONTRACTOR, LOCATIONS SHALL BE SPECIFIED IN THE FIELD BY THE ENGINEER. PAYMENT OF AGGREGATE SHALL INCLUDE ALL EXPENSES FOR FURNISHING, INSTALLING, AND MAINTAINING AGGREGATE FOR CROSSINGS.
- 9.) INTERSECTION GRADING TO BE DETERMINED IN THE FIELD BY THE ENGINEER. BOULEVARD GRADES OR BE ADJUSTED IN THE FIELD BY THE ENGINEER TO MATCH EXISTING GRADES BETTER.
- 10) THE CONTRACTOR SHALL VERIFY ALL WATERMAIN, STORM, AND SANITARY CONNECT TO EXISTING LOCATIONS AND ELEVATIONS PRIOR TO CONNECTION. THE CONTRACTOR SHALL NOTIFY THE ENGINEER OF ANY DEVIATIONS FROM PLAN. NO ADDITIONAL COMPENSATION SHALL BE GIVEN FOR ELEVATION AND/OR LOCATION CHANGES, EXCEPT THAT ADDITIONAL LENGTHS SHALL BE PAID AT BID UNIT PRICES.
- 11.) THE CONTRACTOR SHALL TAKE SPECIAL CARE NOT TO DAMAGE ANY TREES, BUSHES OR LANDSCAPING. TREES OR BUSHES TO BE REMOVED WILL BE MARKED IN THE FIELD BY THE ENGINEER.
- 12.) MANHOLES ARE STATIONED TO CENTER OF STRUCTURE AND CATCH BASIN'S ARE STATIONED TO CENTER OF STRUCTURE AT BACK OF CURB.
- 13.) SEE CROSS SECTIONS FOR APPROXIMATE WALL HEIGHT. FINAL ELEVATIONS TO BE DETERMINED IN THE FIELD. NO WALLS OVER 48" INCHES IN HEIGHT SHALL BE CONSTRUCTED.



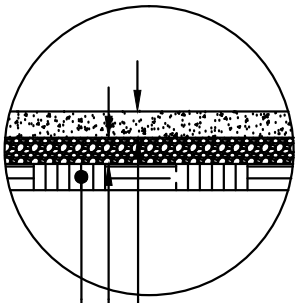
12" RECLAIM SECTION  
PROFESSIONAL DRIVE



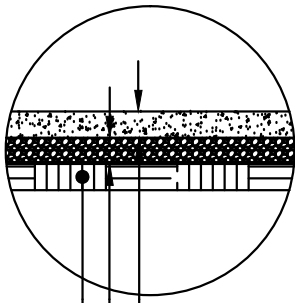
12" RECLAIM SECTION  
SIBLEY VIEW LANE, SIBLEY VIEW COURT, MARVIN LANE,  
NEVADA STREET, NINTH STREET, MAPLE STREET



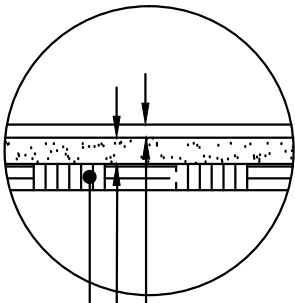
SIDEWALK SECTION THRU DRIVEWAY



SIDEWALK SECTION



DRIVEWAY SECTION/VALLEY GUTTER SECTION



SODDING SECTION

NOTE: DRAWING NOT TO SCALE

I HEREBY CERTIFY THAT THIS PLAN, SPECIFICATION, OR REPORT WAS PREPARED BY ME OR UNDER MY DIRECT SUPERVISION AND THAT I AM A DULY LICENSED PROFESSIONAL ENGINEER UNDER THE LAWS OF THE STATE OF MINNESOTA.

DAVID E. BENNETT  
45867  
DATE XX/XX/XXXX

DESIGNED N.J.B	REV.	BY	DATE
DRAWN N.J.B			
CHECKED S.M.S			

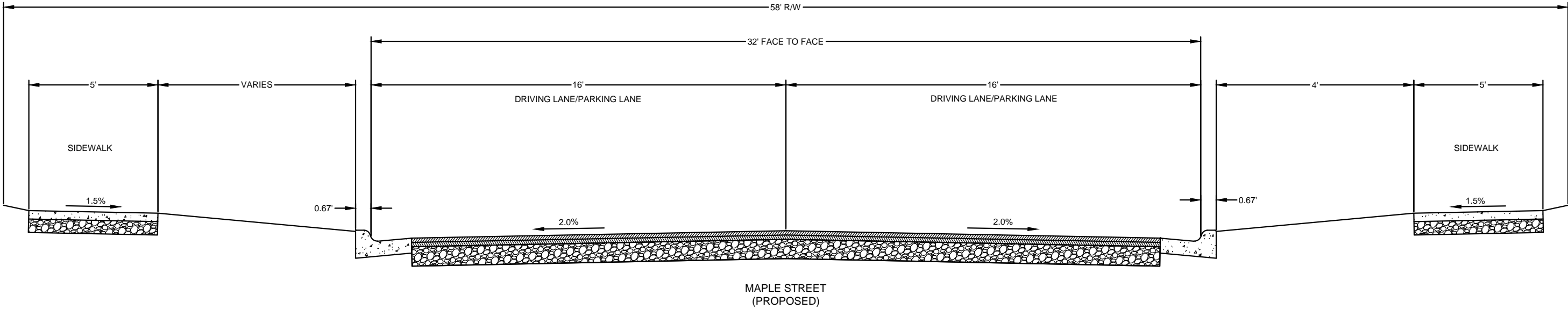
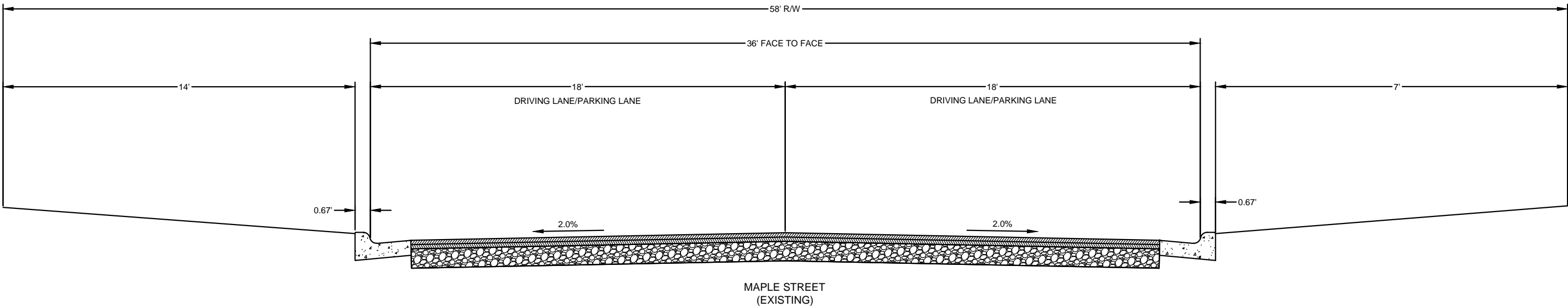


PUBLIC WORKS  
DEPARTMENT  
ENGINEERING DIVISION

CITY OF NORTHFIELD, MINNESOTA  
2017STRT-A36 – 2017 STREET RECLAMATION PROJECT  
DETAILS

SHEET

C001



NOTE: DRAWING NOT TO SCALE

I HEREBY CERTIFY THAT THIS PLAN, SPECIFICATION, OR REPORT WAS PREPARED BY ME OR UNDER MY DIRECT SUPERVISION AND THAT I AM A DULY LICENSED PROFESSIONAL ENGINEER UNDER THE LAWS OF THE STATE OF MINNESOTA.

DAVID E. BENNETT  
LIC. NO. 45867 DATE XX/XX/XXXX

DESIGNED N.J.B	REV.	BY	DATE
DRAWN N.J.B			
CHECKED S.M.S			

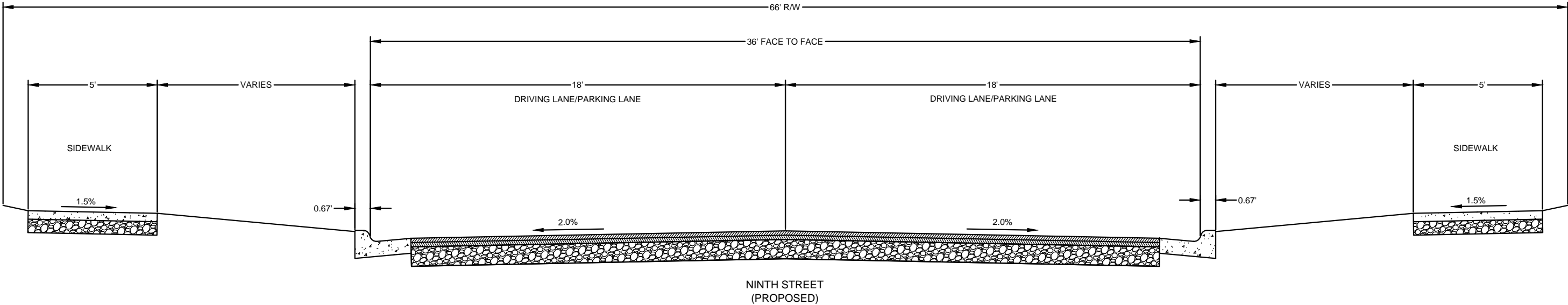
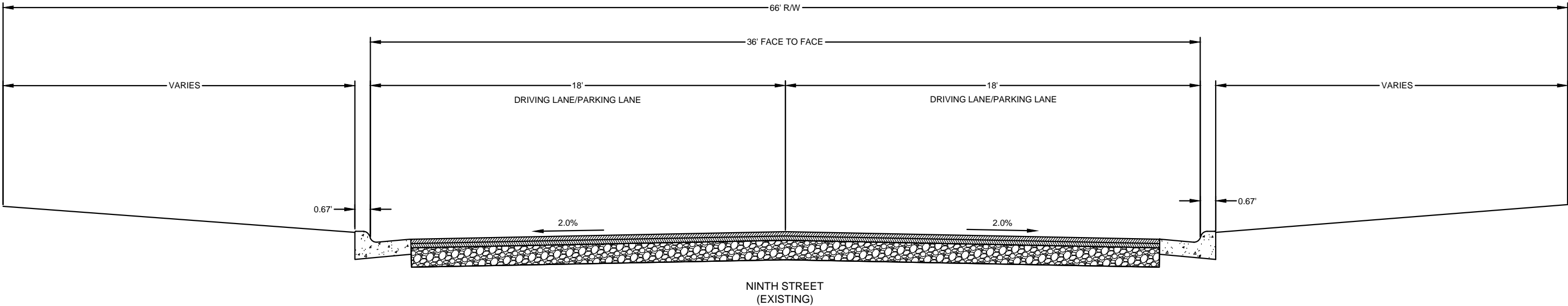


PUBLIC WORKS  
DEPARTMENT  
ENGINEERING DIVISION

CITY OF NORTHFIELD, MINNESOTA
2017STRT-A36 - 2017 STREET RECLAMATION PROJECT
DETAILS

SHEET

C002



NOTE: DRAWING NOT TO SCALE

I HEREBY CERTIFY THAT THIS PLAN, SPECIFICATION, OR REPORT WAS PREPARED BY ME OR UNDER MY DIRECT SUPERVISION AND THAT I AM A DULY LICENSED PROFESSIONAL ENGINEER UNDER THE LAWS OF THE STATE OF MINNESOTA.

DAVID E. BENNETT  
LIC. NO. 45867 DATE XX/XX/XXXX

DESIGNED N.J.B	REV.	BY	DATE
DRAWN N.J.B			
CHECKED S.M.S			

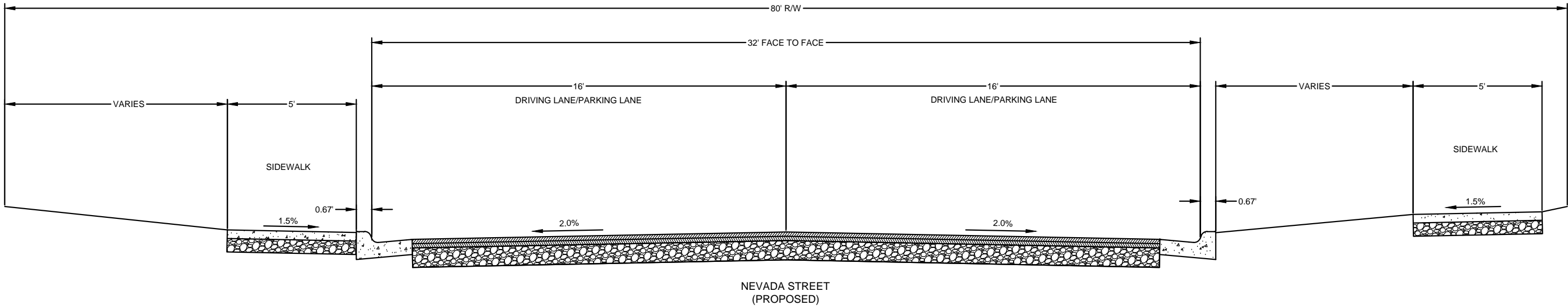
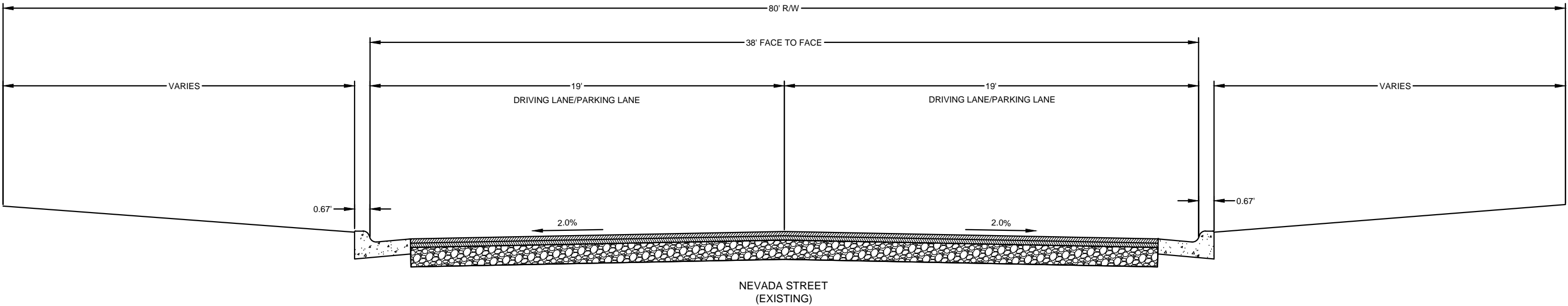


PUBLIC WORKS  
DEPARTMENT  
ENGINEERING DIVISION

CITY OF NORTHFIELD, MINNESOTA
2017STRT-A36 - 2017 STREET RECLAMATION PROJECT
DETAILS

SHEET

C003



NOTE: DRAWING NOT TO SCALE

I HEREBY CERTIFY THAT THIS PLAN, SPECIFICATION, OR REPORT WAS PREPARED BY ME OR UNDER MY DIRECT SUPERVISION AND THAT I AM A DULY LICENSED PROFESSIONAL ENGINEER UNDER THE LAWS OF THE STATE OF MINNESOTA.

DAVID E. BENNETT  
UC. NO. 45867 DATE XX/XX/XXXX

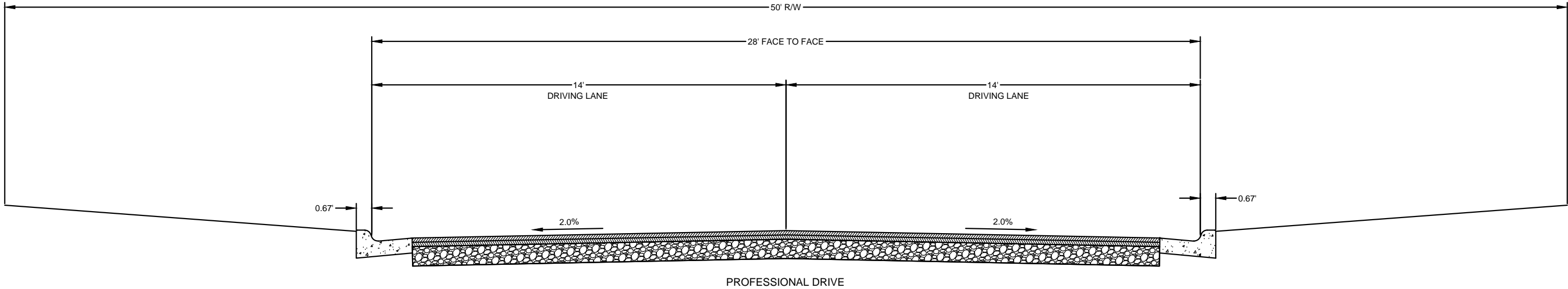
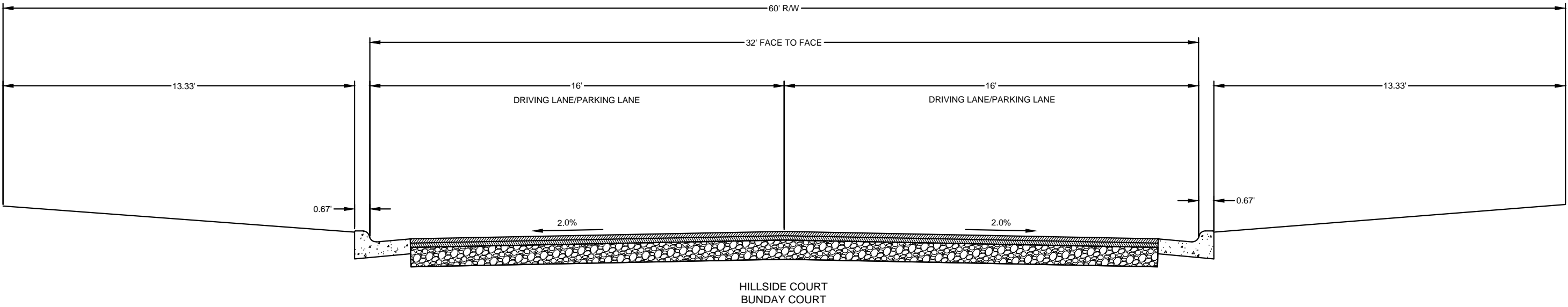
DESIGNED N.J.B	REV.	BY	DATE
DRAWN N.J.B			
CHECKED S.M.S			



PUBLIC WORKS  
DEPARTMENT  
ENGINEERING DIVISION

CITY OF NORTHFIELD, MINNESOTA
2017STRT-A36 - 2017 STREET RECLAMATION PROJECT
DETAILS

SHEET  
C004



NOTE: DRAWING NOT TO SCALE

I HEREBY CERTIFY THAT THIS PLAN, SPECIFICATION, OR REPORT WAS PREPARED BY ME OR UNDER MY DIRECT SUPERVISION AND THAT I AM A DULY LICENSED PROFESSIONAL ENGINEER UNDER THE LAWS OF THE STATE OF MINNESOTA.

2017 A36 Reclamation (1)  
UC. NO. 45867 DATE XX/XX/XXXX

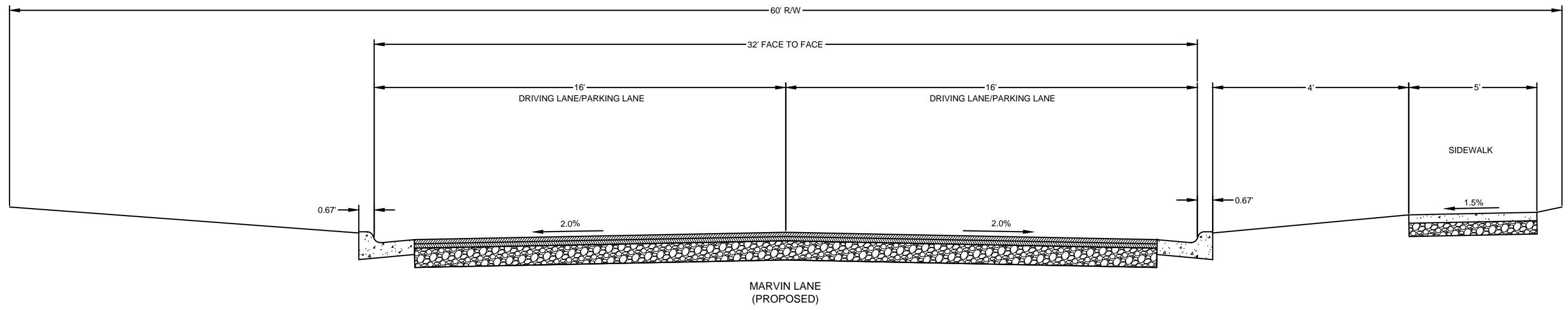
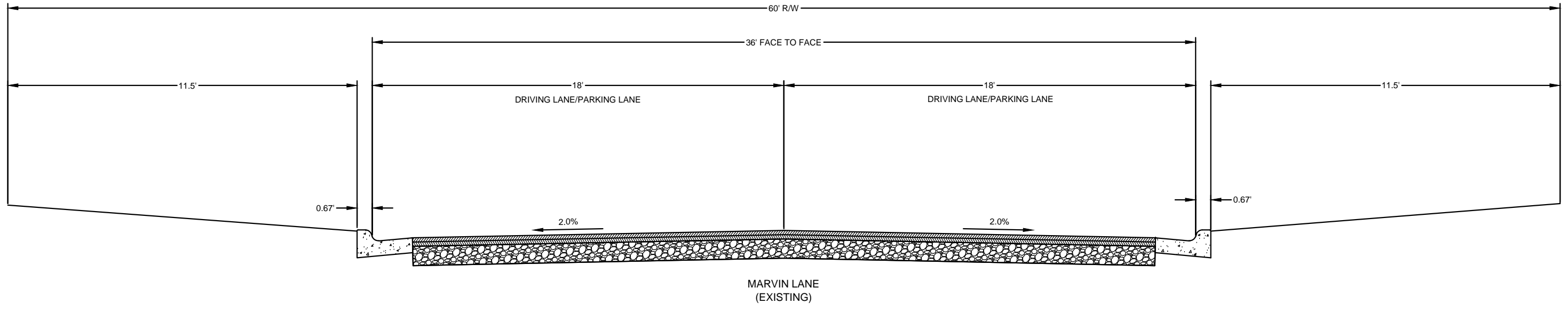
DESIGNED N.J.B	REV.	BY	DATE
DRAWN N.J.B			
CHECKED S.M.S			



PUBLIC WORKS  
DEPARTMENT  
ENGINEERING DIVISION

CITY OF NORTHFIELD, MINNESOTA
2017STRT-A36 - 2017 STREET RECLAMATION PROJECT
DETAILS

SHEET  
C005



NOTE: DRAWING NOT TO SCALE

I HEREBY CERTIFY THAT THIS PLAN, SPECIFICATION, OR REPORT WAS PREPARED BY ME OR UNDER MY DIRECT SUPERVISION AND THAT I AM A DULY LICENSED PROFESSIONAL ENGINEER UNDER THE LAWS OF THE STATE OF MINNESOTA.

DAVID E. BENNETT  
LIC. NO. 45867 DATE XX/XX/XXXX

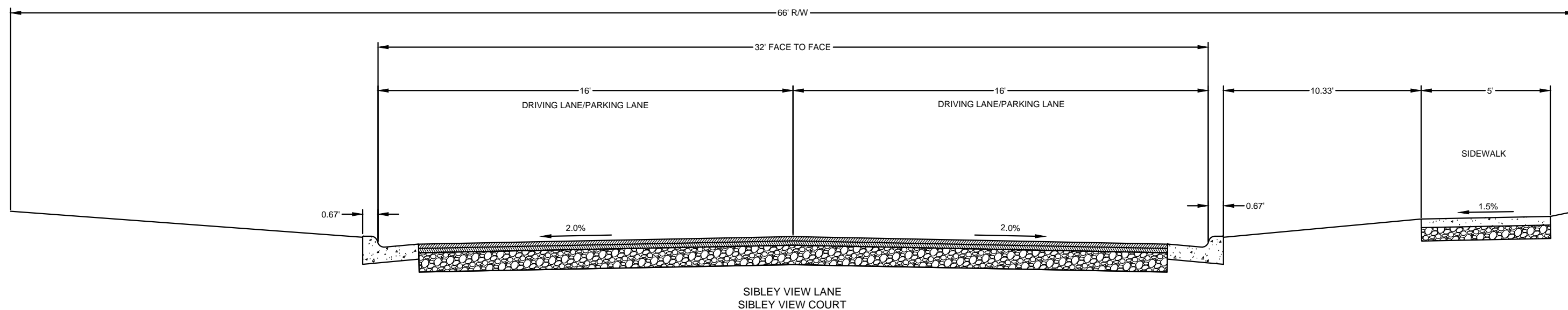
DESIGNED N.J.B	REV.	BY	DATE
DRAWN N.J.B			
CHECKED S.M.S			



PUBLIC WORKS  
DEPARTMENT  
ENGINEERING DIVISION

CITY OF NORTHFIELD, MINNESOTA
2017STRT-A36 - 2017 STREET RECLAMATION PROJECT
DETAILS

SHEET  
C006



NOTE: DRAWING NOT TO SCALE

I HEREBY CERTIFY THAT THIS PLAN, SPECIFICATION, OR REPORT WAS PREPARED BY ME OR UNDER MY DIRECT SUPERVISION AND THAT I AM A DULY LICENSED PROFESSIONAL ENGINEER UNDER THE LAWS OF THE STATE OF MINNESOTA.

DAVID E. BENNETT  
LIC. NO. 45867 DATE XX/XX/XXXX

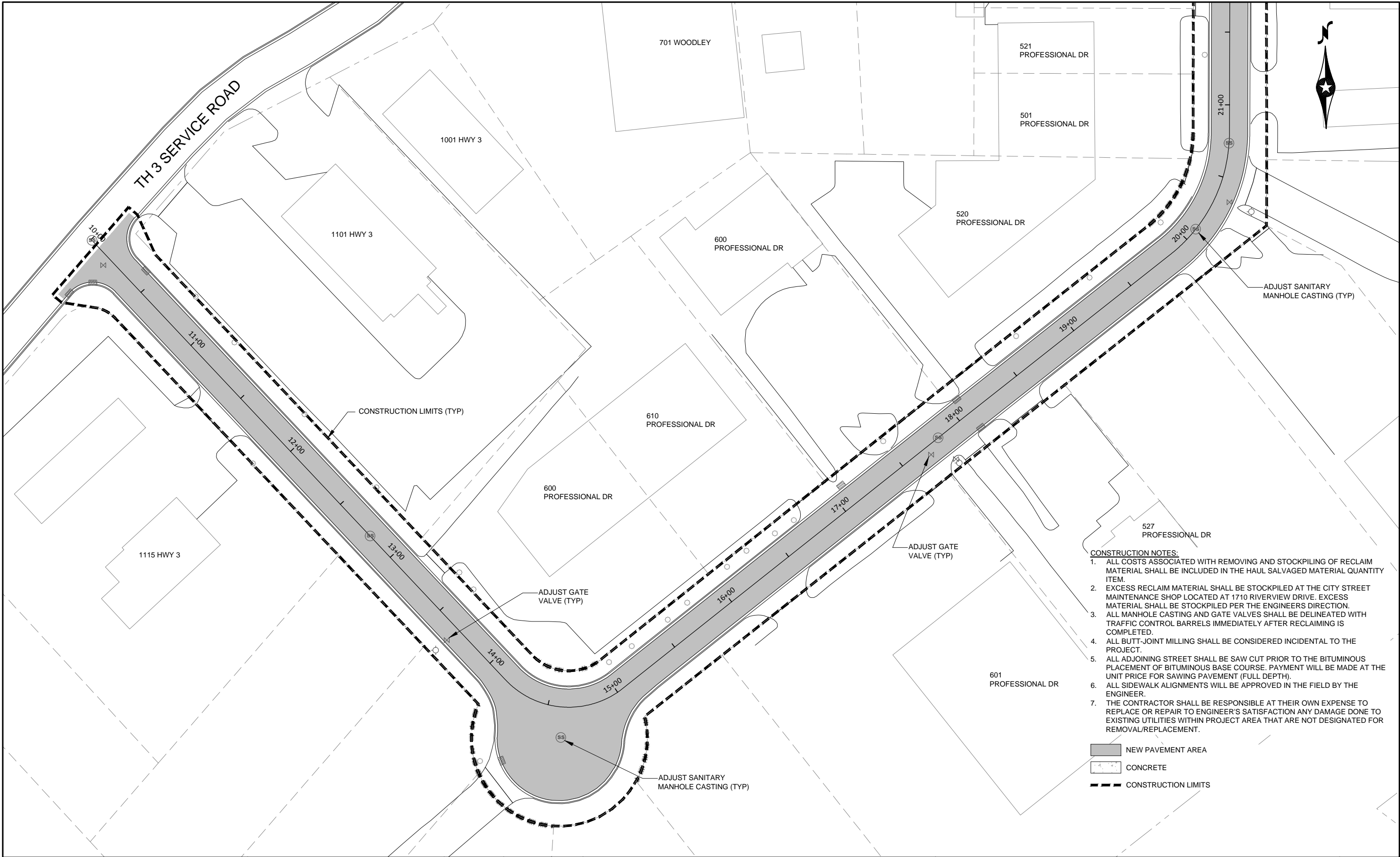
DESIGNED N.J.B	REV.	BY	DATE
DRAWN N.J.B			
CHECKED S.M.S			



PUBLIC WORKS  
DEPARTMENT  
ENGINEERING DIVISION

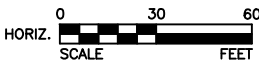
CITY OF NORTHFIELD, MINNESOTA
2017STRT-A36 - 2017 STREET RECLAMATION PROJECT
DETAILS

SHEET  
C007



- CONSTRUCTION NOTES:**
1. ALL COSTS ASSOCIATED WITH REMOVING AND STOCKPIILING OF RECLAIM MATERIAL SHALL BE INCLUDED IN THE HAUL SALVAGED MATERIAL QUANTITY ITEM.
  2. EXCESS RECLAIM MATERIAL SHALL BE STOCKPILED AT THE CITY STREET MAINTENANCE SHOP LOCATED AT 1710 RIVERVIEW DRIVE. EXCESS MATERIAL SHALL BE STOCKPILED PER THE ENGINEERS DIRECTION.
  3. ALL MANHOLE CASTING AND GATE VALVES SHALL BE DELINEATED WITH TRAFFIC CONTROL BARRELS IMMEDIATELY AFTER RECLAIMING IS COMPLETED.
  4. ALL BUTT-JOINT MILLING SHALL BE CONSIDERED INCIDENTAL TO THE PROJECT.
  5. ALL ADJOINING STREET SHALL BE SAW CUT PRIOR TO THE BITUMINOUS PLACEMENT OF BITUMINOUS BASE COURSE. PAYMENT WILL BE MADE AT THE UNIT PRICE FOR SAWING PAVEMENT (FULL DEPTH).
  6. ALL SIDEWALK ALIGNMENTS WILL BE APPROVED IN THE FIELD BY THE ENGINEER.
  7. THE CONTRACTOR SHALL BE RESPONSIBLE AT THEIR OWN EXPENSE TO REPLACE OR REPAIR TO ENGINEER'S SATISFACTION ANY DAMAGE DONE TO EXISTING UTILITIES WITHIN PROJECT AREA THAT ARE NOT DESIGNATED FOR REMOVAL/REPLACEMENT.

- NEW PAVEMENT AREA  
CONCRETE  
CONSTRUCTION LIMITS



I HEREBY CERTIFY THAT THIS PLAN, SPECIFICATION, OR REPORT WAS PREPARED BY ME OR UNDER MY DIRECT SUPERVISION AND THAT I AM A DULY LICENSED PROFESSIONAL ENGINEER UNDER THE LAWS OF THE STATE OF MINNESOTA.

DAVID E. BENNETT  
U.C. NO. 45867 DATE XX/XX/XXXX

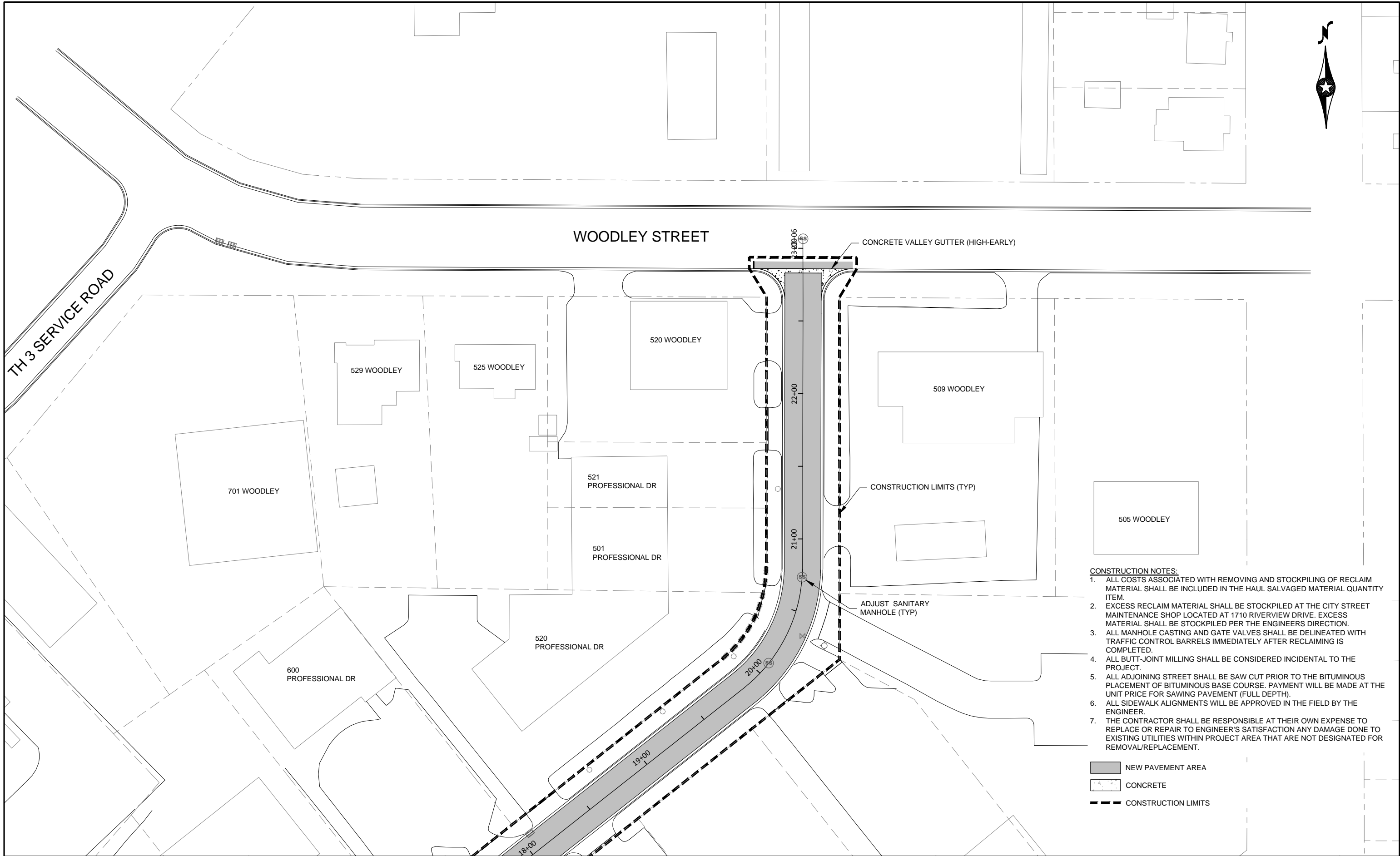
DESIGNED N.J.B	REV.	BY	DATE
DRAWN N.J.B			
CHECKED S.M.S			



PUBLIC WORKS  
DEPARTMENT  
ENGINEERING DIVISION

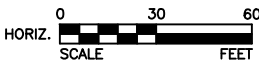
CITY OF NORTHFIELD, MINNESOTA  
2017STRT-A36 - 2017 STREET RECLAMATION PROJECT  
RECLAIM PLAN

SHEET  
C600



- CONSTRUCTION NOTES:**
1. ALL COSTS ASSOCIATED WITH REMOVING AND STOCKPILING OF RECLAIM MATERIAL SHALL BE INCLUDED IN THE HAUL SALVAGED MATERIAL QUANTITY ITEM.
  2. EXCESS RECLAIM MATERIAL SHALL BE STOCKPILED AT THE CITY STREET MAINTENANCE SHOP LOCATED AT 1710 RIVERVIEW DRIVE. EXCESS MATERIAL SHALL BE STOCKPILED PER THE ENGINEERS DIRECTION.
  3. ALL MANHOLE CASTING AND GATE VALVES SHALL BE DELINEATED WITH TRAFFIC CONTROL BARRELS IMMEDIATELY AFTER RECLAIMING IS COMPLETED.
  4. ALL BUTT-JOINT MILLING SHALL BE CONSIDERED INCIDENTAL TO THE PROJECT.
  5. ALL ADJOINING STREET SHALL BE SAW CUT PRIOR TO THE BITUMINOUS PLACEMENT OF BITUMINOUS BASE COURSE. PAYMENT WILL BE MADE AT THE UNIT PRICE FOR SAWING PAVEMENT (FULL DEPTH).
  6. ALL SIDEWALK ALIGNMENTS WILL BE APPROVED IN THE FIELD BY THE ENGINEER.
  7. THE CONTRACTOR SHALL BE RESPONSIBLE AT THEIR OWN EXPENSE TO REPLACE OR REPAIR TO ENGINEER'S SATISFACTION ANY DAMAGE DONE TO EXISTING UTILITIES WITHIN PROJECT AREA THAT ARE NOT DESIGNATED FOR REMOVAL/REPLACEMENT.

- NEW PAVEMENT AREA
- CONCRETE
- CONSTRUCTION LIMITS



I HEREBY CERTIFY THAT THIS PLAN, SPECIFICATION, OR REPORT WAS PREPARED BY ME OR UNDER MY DIRECT SUPERVISION AND THAT I AM A DULY LICENSED PROFESSIONAL ENGINEER UNDER THE LAWS OF THE STATE OF MINNESOTA.

DAVID E. BENNETT  
LIC. NO. 45867      DATE XX/XX/XXXX

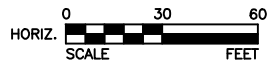
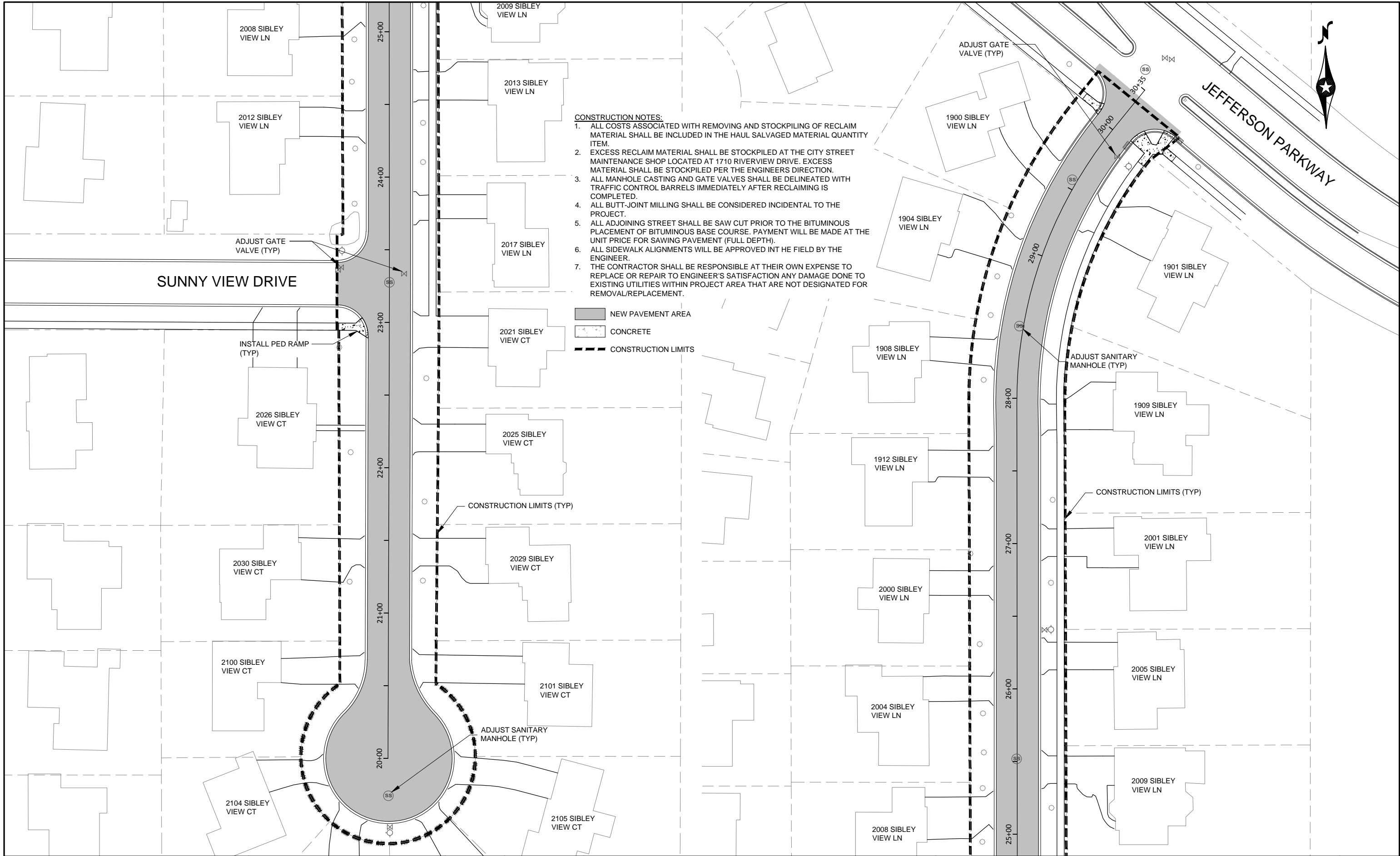
DESIGNED N.J.B	REV.	BY	DATE
DRAWN N.J.B			
CHECKED S.M.S			



PUBLIC WORKS  
DEPARTMENT  
ENGINEERING DIVISION

CITY OF NORTHFIELD, MINNESOTA
2017STRT-A36 - 2017 STREET RECLAMATION PROJECT
RECLAIM PLAN

SHEET  
C601



I HEREBY CERTIFY THAT THIS PLAN, SPECIFICATION, OR REPORT WAS PREPARED BY ME OR UNDER MY DIRECT SUPERVISION AND THAT I AM A DULY LICENSED PROFESSIONAL ENGINEER UNDER THE LAWS OF THE STATE OF MINNESOTA.

DESIGNED  
N.J.B

DRAWN  
N.J.B

CHECKED  
S.M.S

DAVID E. BENNETT  
45867

DATE XX/XX/XXXX

UC. NO.

REV.	BY	DATE



PUBLIC WORKS  
DEPARTMENT  
ENGINEERING DIVISION

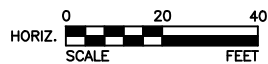
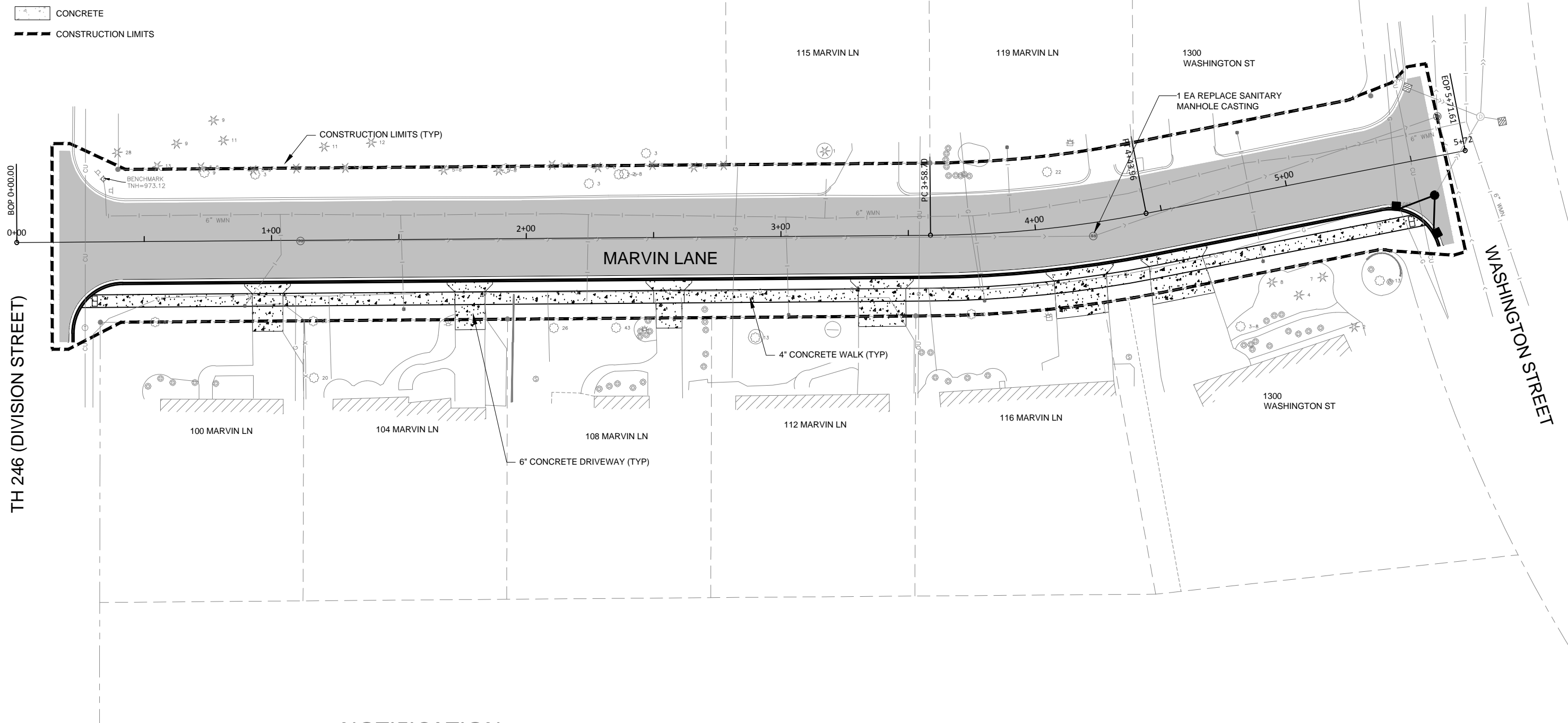
CITY OF NORTHFIELD, MINNESOTA
2017STRT-A36 - 2017 STREET RECLAMATION PROJECT
RECLAIM PLAN

SHEET  
C602

CONSTRUCTION NOTES:

1. ALL COSTS ASSOCIATED WITH REMOVING AND STOCKPILING OF RECLAIM MATERIAL SHALL BE INCLUDED IN THE HAUL SALVAGED MATERIAL QUANTITY ITEM.
2. EXCESS RECLAIM MATERIAL SHALL BE STOCKPILED AT THE CITY STREET MAINTENANCE SHOP LOCATED AT 1710 RIVERVIEW DRIVE. EXCESS MATERIAL SHALL BE STOCKPILED PER THE ENGINEERS DIRECTION.
3. ALL MANHOLE CASTING AND GATE VALVES SHALL BE DELINEATED WITH TRAFFIC CONTROL BARRELS IMMEDIATELY AFTER RECLAIMING IS COMPLETED.
4. ALL BUTT-JOINT MILLING SHALL BE CONSIDERED INCIDENTAL TO THE PROJECT.
5. ALL ADJOINING STREET SHALL BE SAW CUT PRIOR TO THE BITUMINOUS PLACEMENT OF BITUMINOUS BASE COURSE. PAYMENT WILL BE MADE AT THE UNIT PRICE FOR SAWING PAVEMENT (FULL DEPTH).
6. ALL SIDEWALK ALIGNMENTS WILL BE APPROVED INT HE FIELD BY THE ENGINEER.
7. THE CONTRACTOR SHALL BE RESPONSIBLE AT THEIR OWN EXPENSE TO REPLACE OR REPAIR TO ENGINEER'S SATISFACTION ANY DAMAGE DONE TO EXISTING UTILITIES WITHIN PROJECT AREA THAT ARE NOT DESIGNATED FOR REMOVAL/REPLACEMENT.

- NEW PAVEMENT AREA
- CONCRETE
- CONSTRUCTION LIMITS



I HEREBY CERTIFY THAT THIS PLAN, SPECIFICATION, OR REPORT WAS PREPARED BY ME OR UNDER MY DIRECT SUPERVISION AND THAT I AM A DULY LICENSED PROFESSIONAL ENGINEER UNDER THE LAWS OF THE STATE OF MINNESOTA.

DAVID E. BENNETT  
UC. NO. 45867 DATE XX/XX/XXXX

DESIGNED N.J.B	REV.	BY	DATE
DRAWN N.J.B			
CHECKED S.M.S			



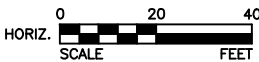
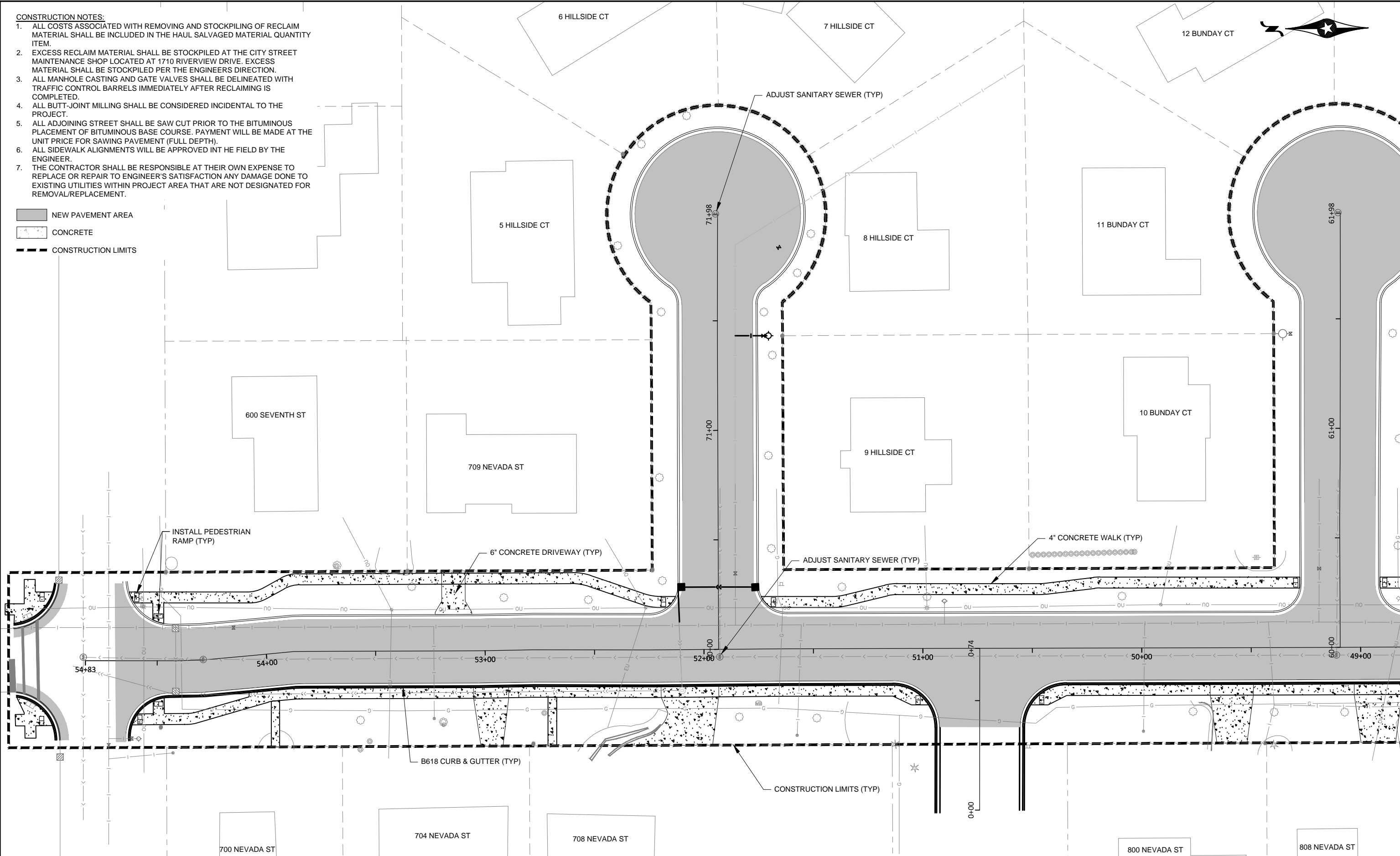
PUBLIC WORKS  
DEPARTMENT  
ENGINEERING DIVISION

CITY OF NORTHFIELD, MINNESOTA  
2017STRT-A36 - 2017 STREET RECLAMATION PROJECT  
RECLAIM PLAN

SHEET  
C603

- CONSTRUCTION NOTES:
1. ALL COSTS ASSOCIATED WITH REMOVING AND STOCKPIILING OF RECLAIM MATERIAL SHALL BE INCLUDED IN THE HAUL SALVAGED MATERIAL QUANTITY ITEM.
  2. EXCESS RECLAIM MATERIAL SHALL BE STOCKPILED AT THE CITY STREET MAINTENANCE SHOP LOCATED AT 1710 RIVERVIEW DRIVE. EXCESS MATERIAL SHALL BE STOCKPILED PER THE ENGINEERS DIRECTION.
  3. ALL MANHOLE CASTING AND GATE VALVES SHALL BE DELINEATED WITH TRAFFIC CONTROL BARRELS IMMEDIATELY AFTER RECLAIMING IS COMPLETED.
  4. ALL BUTT-JOINT MILLING SHALL BE CONSIDERED INCIDENTAL TO THE PROJECT.
  5. ALL ADJOINING STREET SHALL BE SAW CUT PRIOR TO THE BITUMINOUS PLACEMENT OF BITUMINOUS BASE COURSE. PAYMENT WILL BE MADE AT THE UNIT PRICE FOR SAWING PAVEMENT (FULL DEPTH).
  6. ALL SIDEWALK ALIGNMENTS WILL BE APPROVED INT HE FIELD BY THE ENGINEER.
  7. THE CONTRACTOR SHALL BE RESPONSIBLE AT THEIR OWN EXPENSE TO REPLACE OR REPAIR TO ENGINEER'S SATISFACTION ANY DAMAGE DONE TO EXISTING UTILITIES WITHIN PROJECT AREA THAT ARE NOT DESIGNATED FOR REMOVAL/REPLACEMENT.

- NEW PAVEMENT AREA
- CONCRETE
- CONSTRUCTION LIMITS



I HEREBY CERTIFY THAT THIS PLAN, SPECIFICATION, OR REPORT WAS PREPARED BY ME OR UNDER MY DIRECT SUPERVISION AND THAT I AM A DULY LICENSED PROFESSIONAL ENGINEER UNDER THE LAWS OF THE STATE OF MINNESOTA.

DAVID E. BENNETT  
UC. NO. 45867  
DATE XX/XX/XXXX

DESIGNED	REV.	BY	DATE
N.J.B			
DRAWN			
N.J.B			
CHECKED			
S.M.S			

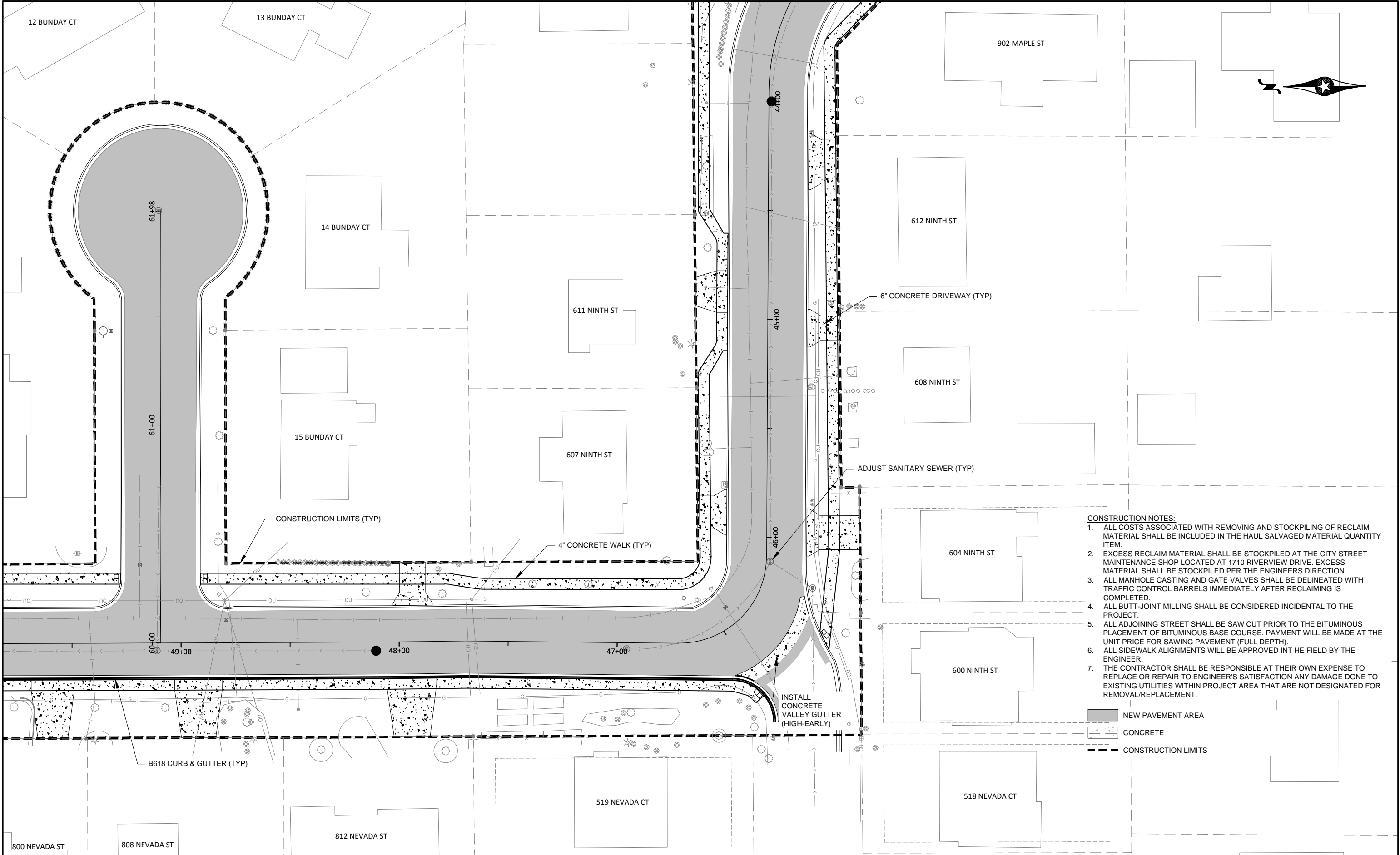


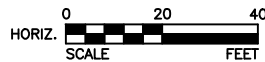
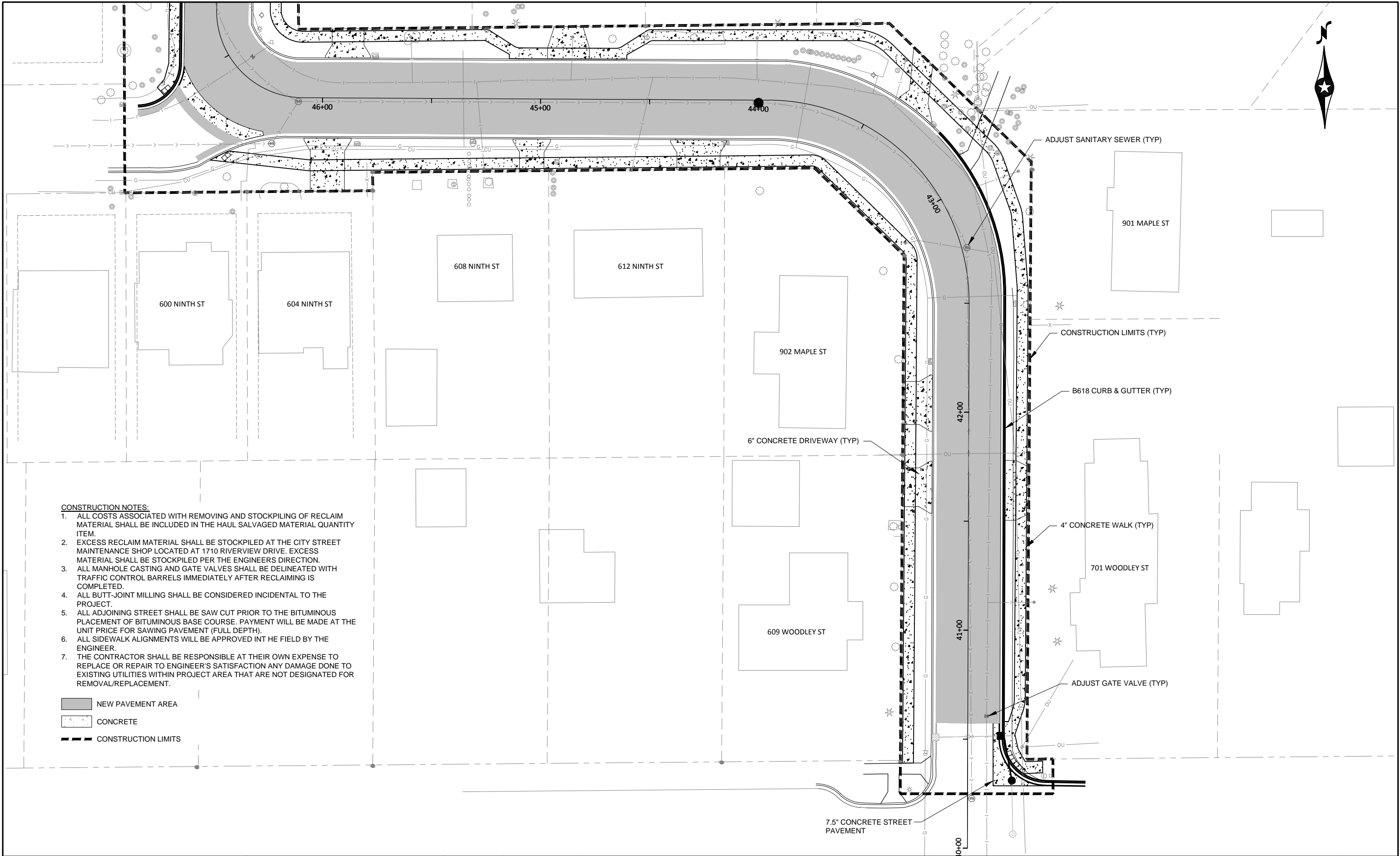
PUBLIC WORKS  
DEPARTMENT  
ENGINEERING DIVISION

CITY OF NORTHFIELD, MINNESOTA  
2017STRT-A36 - 2017 STREET RECLAMATION PROJECT  
RECLAIM PLAN

SHEET

C604





I HEREBY CERTIFY THAT THIS PLAN, SPECIFICATION, OR REPORT WAS PREPARED BY ME OR UNDER MY DIRECT SUPERVISION AND THAT I AM A DULY LICENSED PROFESSIONAL ENGINEER UNDER THE LAWS OF THE STATE OF MINNESOTA.

DESIGNED  
N.J.B

DRAWN  
N.J.B

CHECKED  
S.M.S

DAVID E. BENNETT  
UC. NO. 45867 DATE XX/XX/XXXX



PUBLIC WORKS  
DEPARTMENT  
ENGINEERING DIVISION

CITY OF NORTHFIELD, MINNESOTA  
2017STRT-A36 - 2017 STREET RECLAMATION PROJECT  
RECLAIM PLAN

SHEET  
C606