

PAUL HANSON SUBDIVISION 2ND ADDITION

KNOW ALL PERSONS BY THESE PRESENTS: That Target Corporation, a Minnesota corporation, owner of the following described property:

Lot 1, Block 1, PAUL HANSON SUBDIVISION, City of Northfield, Rice County, Minnesota.

Has caused the same to be surveyed and platted as PAUL HANSON SUBDIVISION 2ND ADDITION and does hereby dedicate to the public for public use the drainage and utility easements as created by this plat.

In witness whereof said Target Corporation, a Minnesota corporation, has caused these presents to be signed by its proper officer this _____ day of _____, 20____.

Target Corporation, a Minnesota corporation

By: Target Corporation, a Minnesota corporation

by _____, its _____

STATE OF _____
COUNTY OF _____

This instrument was acknowledged before me on _____ by _____, the _____ of Target Corporation, a Minnesota corporation.

(Signature) (Name Printed)

Notary Public, _____ County, _____

My Commission Expires _____

SURVEYORS CERTIFICATE

I Gary Bjorklund do hereby certify that this plat was prepared by me or under my direct supervision; that I am a duly Licensed Land Surveyor in the State of Minnesota; that this plat is a correct representation of the boundary survey; that all mathematical data and labels are correctly designated on this plat; that all monuments depicted on this plat have been, or will be correctly set within one year; that all water boundaries and wet lands, as defined in Minnesota Statutes, Section 505.01, Subd. 3, as of the date of this certificate are shown and labeled on this plat; and all public ways are shown and labeled on this plat.

Dated this _____ day of _____, 20____.

Gary Bjorklund, Land Surveyor
Minnesota License No. 46563

STATE OF MINNESOTA
COUNTY OF _____

This instrument was acknowledged before me on this _____ day of _____, 20____, by Gary Bjorklund.

(Signature) (Name Printed)

Notary Public, _____ County, Minnesota

My Commission Expires _____

CITY COUNCIL, CITY OF NORTHFIELD, MINNESOTA

This plat of PAUL HANSON SUBDIVISION 2ND ADDITION was approved and accepted by the City Council of the City of Northfield, Minnesota at a regular meeting thereof held this _____ day of _____, 20____, and said plat is in compliance with the provisions of Minnesota Statutes, Section 505, Subd. 2.

City Council, City of Northfield, Minnesota

By: _____
Mayor

By: _____
City Clerk

RICE COUNTY SURVEYOR

I hereby certify that in accordance with Minnesota Statutes, Section 505.021, Subd. 11, this plat has been reviewed and approved this _____ day of _____, 20____.

Michael Fangman
Rice County Surveyor

RICE COUNTY PROPERTY TAX AND ELECTIONS

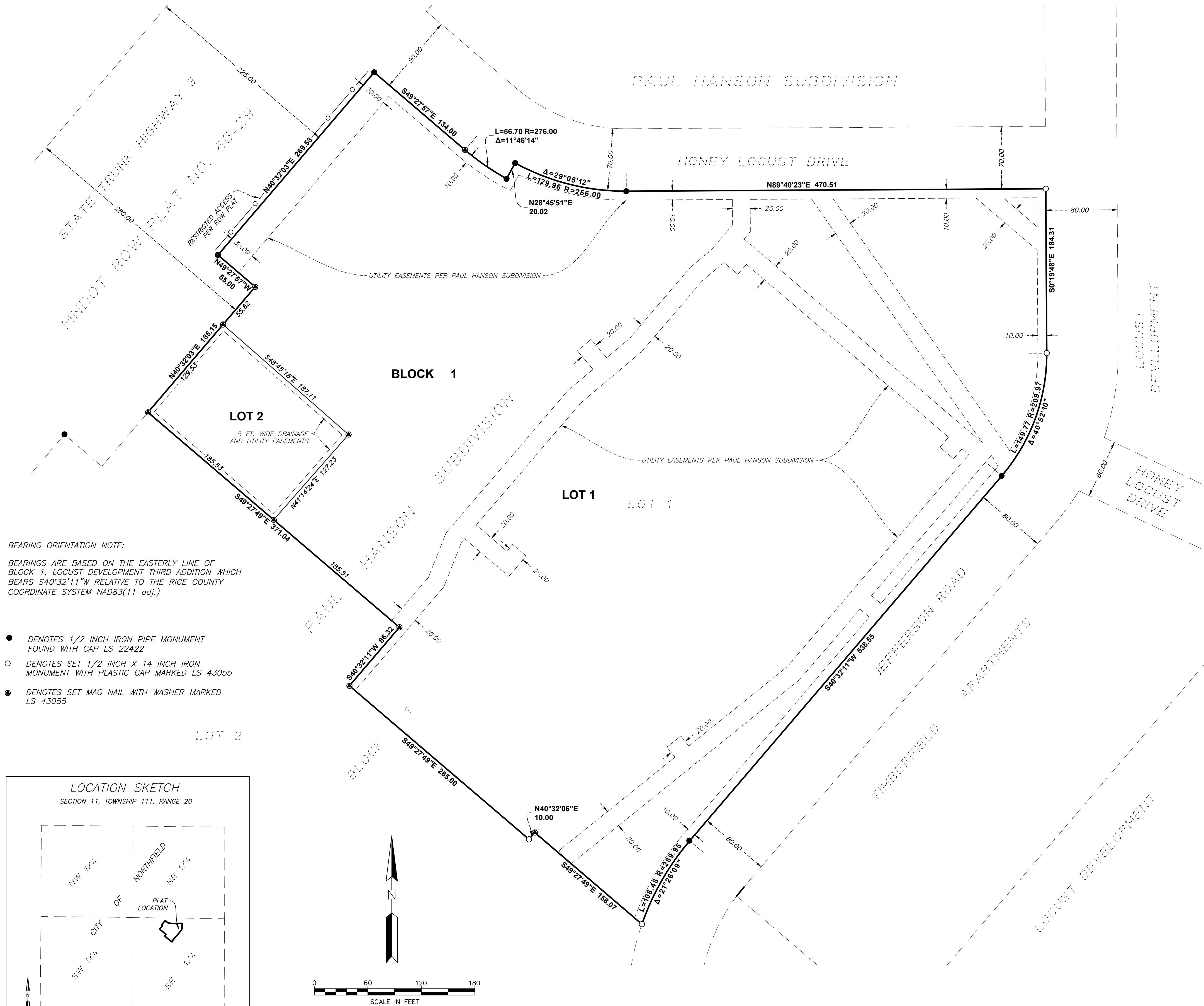
Pursuant to Minnesota Statutes, Section 505.021, Subd. 9, taxes payable in the year 20____ on the land hereinbefore described have been paid. Also, pursuant to Minnesota Statutes, Section 272.12, there are no delinquent taxes and transfer entered this _____ day of _____, 20____.

Denise Anderson
Property Tax & Elections Director

RICE COUNTY RECORDER

County Recorder, County of Rice, State of Minnesota
I hereby certify that this plat of XXXXXXXXXXXXXXXXXXXX was filed in the office of the County Recorder for public record on this _____ day of _____, 20____ at _____ o'clock ____M. and was duly filed as Document Number _____.

Judy Van Erp
Rice County Recorder



BEARING ORIENTATION NOTE:
BEARINGS ARE BASED ON THE EASTERLY LINE OF BLOCK 1, LOCUST DEVELOPMENT THIRD ADDITION WHICH BEARS S40°32'11"W RELATIVE TO THE RICE COUNTY COORDINATE SYSTEM NAD83(11 adj.)

- DENOTES 1/2 INCH IRON PIPE MONUMENT FOUND WITH CAP LS 22422
- DENOTES SET 1/2 INCH X 14 INCH IRON MONUMENT WITH PLASTIC CAP MARKED LS 43055
- DENOTES SET MAG NAIL WITH WASHER MARKED LS 43055

