



2026

**Playground Improvement:
Accept Bid and Award Project (PARK2025-E18)**

City Council Meeting

April 7, 2026

City Plans & Consistency



- Comprehensive Plan
- Ped & Bike Plan
- Open Space & Trail Plan
- Park & Rec CIP Study
- Heritage Preservation COA
- Multi-Year 5-Year CIP Planning
- Riverfront Enhancement Action Plan

City of Northfield
MINNESOTA

Northfield Parks & Recreation CIP Study
City of Northfield, MN | December 2022

JLG Architects
710 South 2nd Street, 8th Floor
Minneapolis, MN 55401

Damon Farber
310 South 4th Avenue, Suite 7050
Minneapolis, MN 55415

JLG

DF/
DAMON FARBER

The complex block contains a collage of four photographs: a community meeting under a red tent with a presentation board, a playground area, a wooden gazebo, and a park path. Below the photos is the title 'Northfield Parks & Recreation CIP Study' and the date 'City of Northfield, MN | December 2022'. At the bottom right, contact information for JLG Architects and Damon Farber is provided, along with their respective logos.

Project Implementation



Project Start
site walks,
evaluation
6/25

Parks & Recreation
Advisory Board
review, refine, &
approve
8/25 + 10/25

Historic Preservation
Commission
approve c/o
appropriateness
7/25 + 1/26

City Council
accept Bid and
award contract
4/7/2026

7/25 + 9/25
Preliminary Concept
Plans
neighborhood mtgs
review & comment

12/25
City Council
26' Budget, 26' CIP,
funding
approved

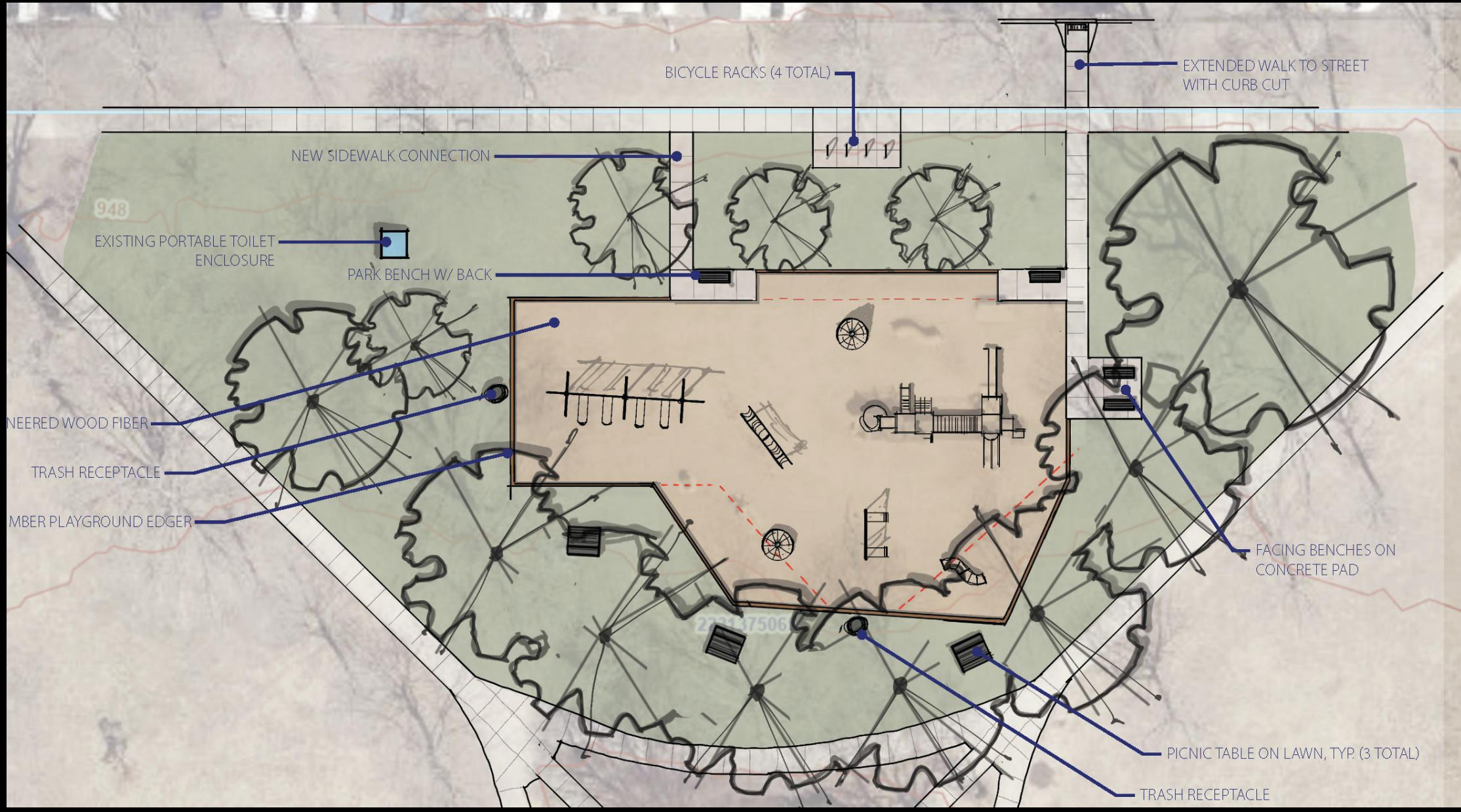
1/26
City Council
approve plans &
authorize bids

Project Mgt
Bidding,
Commencement,
Construction,
Completion
2/26-10/26



**CENTRAL PARK PLAYGROUND – existing conditions
proposed repair + replacement + enhancements**

CITY COUNCIL MEETING 7 APRIL 2026



CENTRAL PARK PLAYGROUND – concept plan

proposed repair + replacement + enhancements

CITY COUNCIL MEETING 7 APRIL 2026



**MOVEABLE PICNIC TABLE
[NO CONCRETE PAD]**



KEEP EXISTING SWINGS

slr
landscape
structures
Northfield Central Park
1198575-01-05-06 - 10.21.2025
©2025 Landscape Structures



LARGE CLIMBER + SPINNER

slr
landscape
structures
Northfield Central Park
1198575-01-05-03 - 10.21.2025
©2025 Landscape Structures



CONNECT WALKWAY TO EXISTING BENCHES



REUSE [RELOCATE] EXISTING BENCHES



PLAYHOUSE DOME

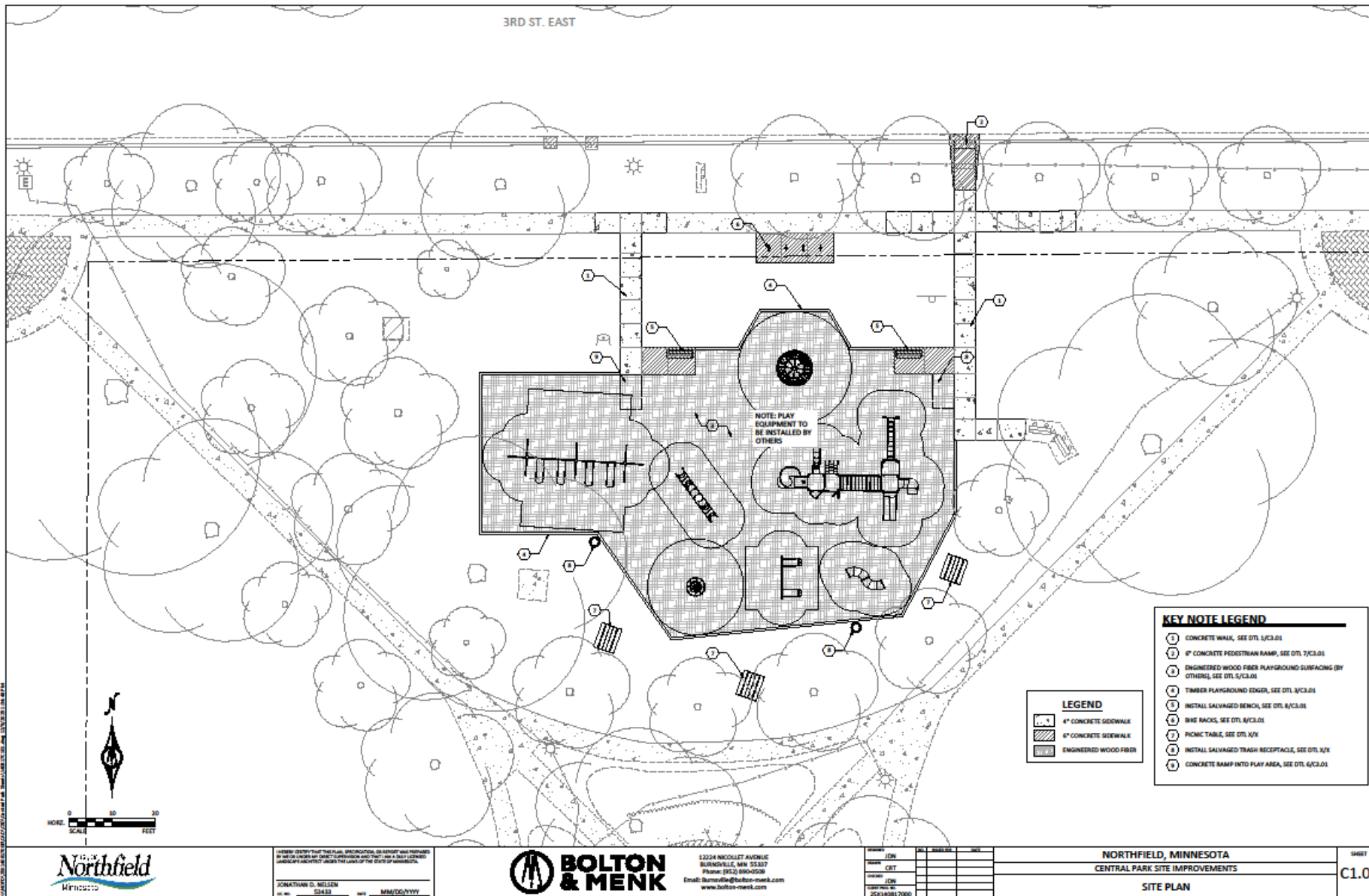


**MOVE EXISTING SLIDE +
REPLACE W/ MONKEY BARS**

slr
landscape
structures
Northfield Central Park
1198575-01-05-03 - 10.21.2025
flagshi
©2025 Landscape Structures. All Rights Reserved

CENTRAL PARK PLAYGROUND – playground features proposed repair + replacement + enhancements CITY COUNCIL MEETING 7 APRIL 2026



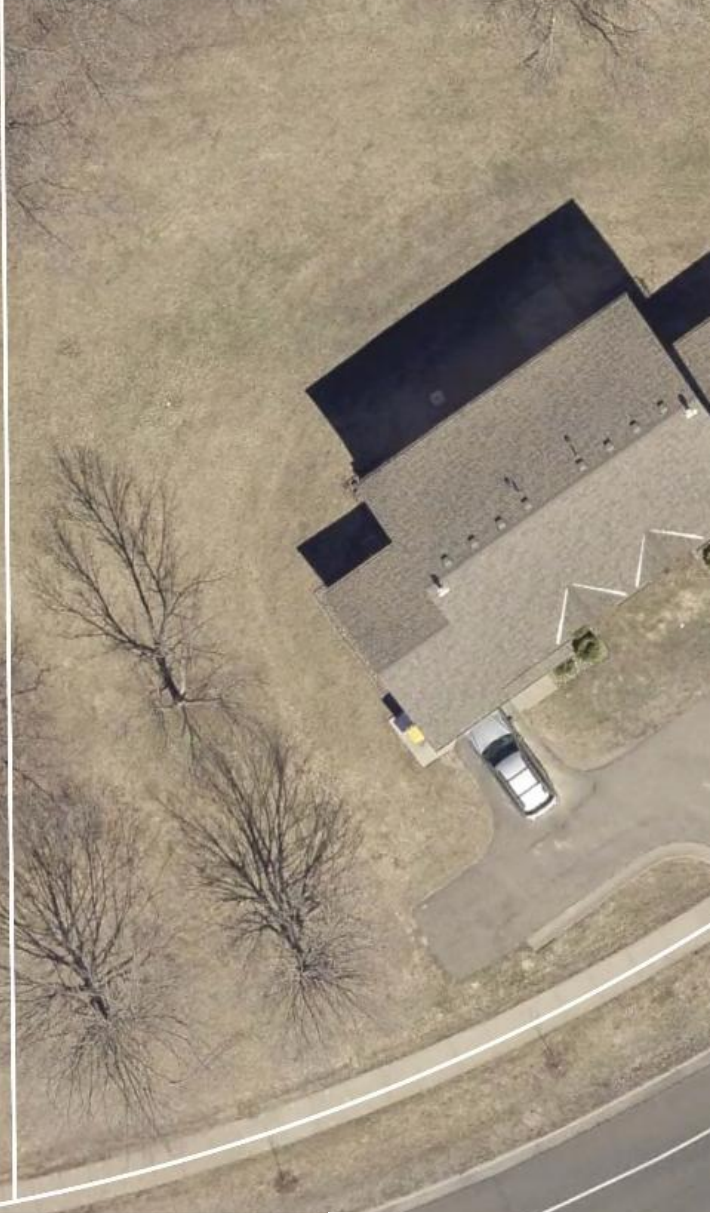
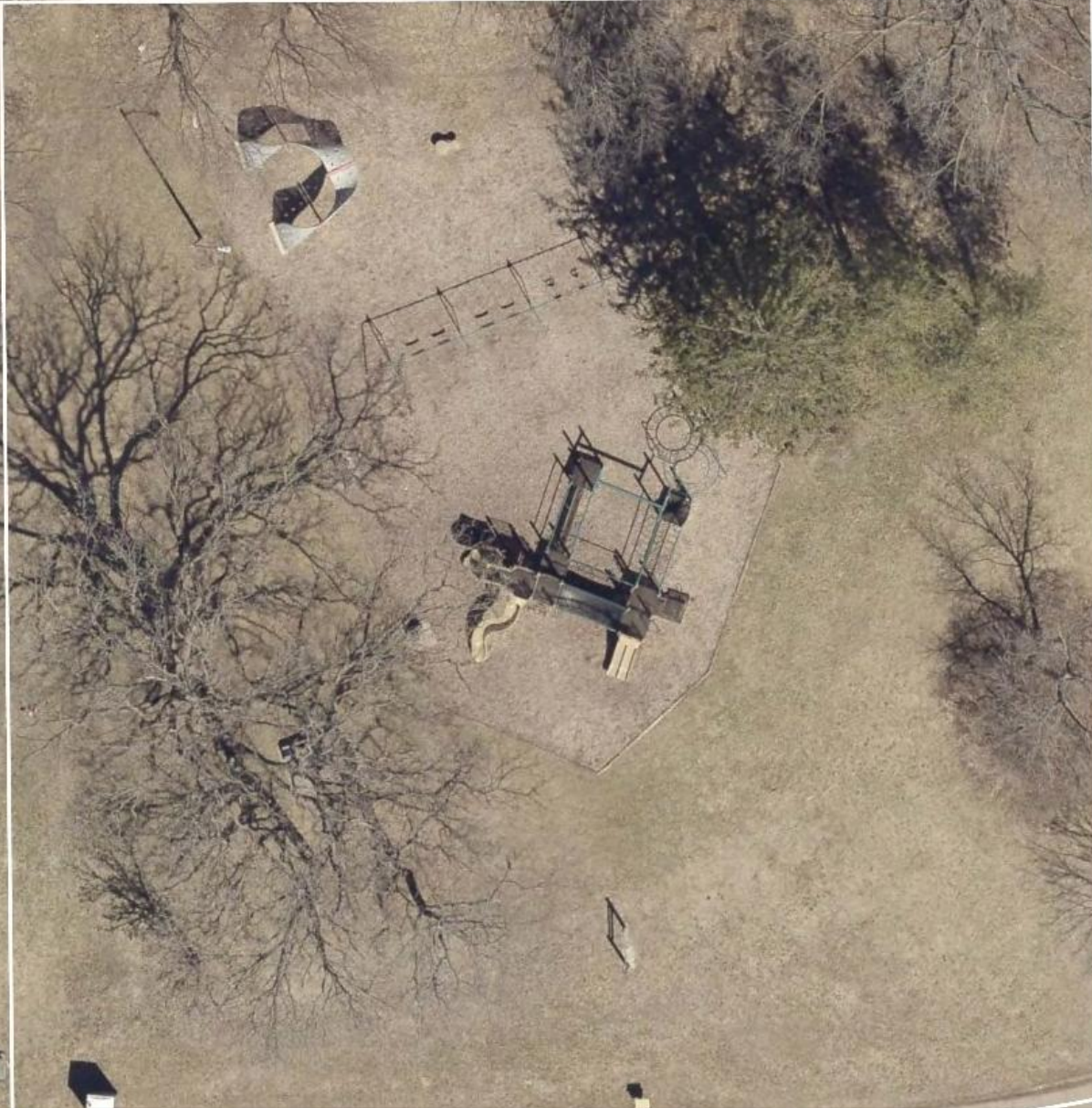


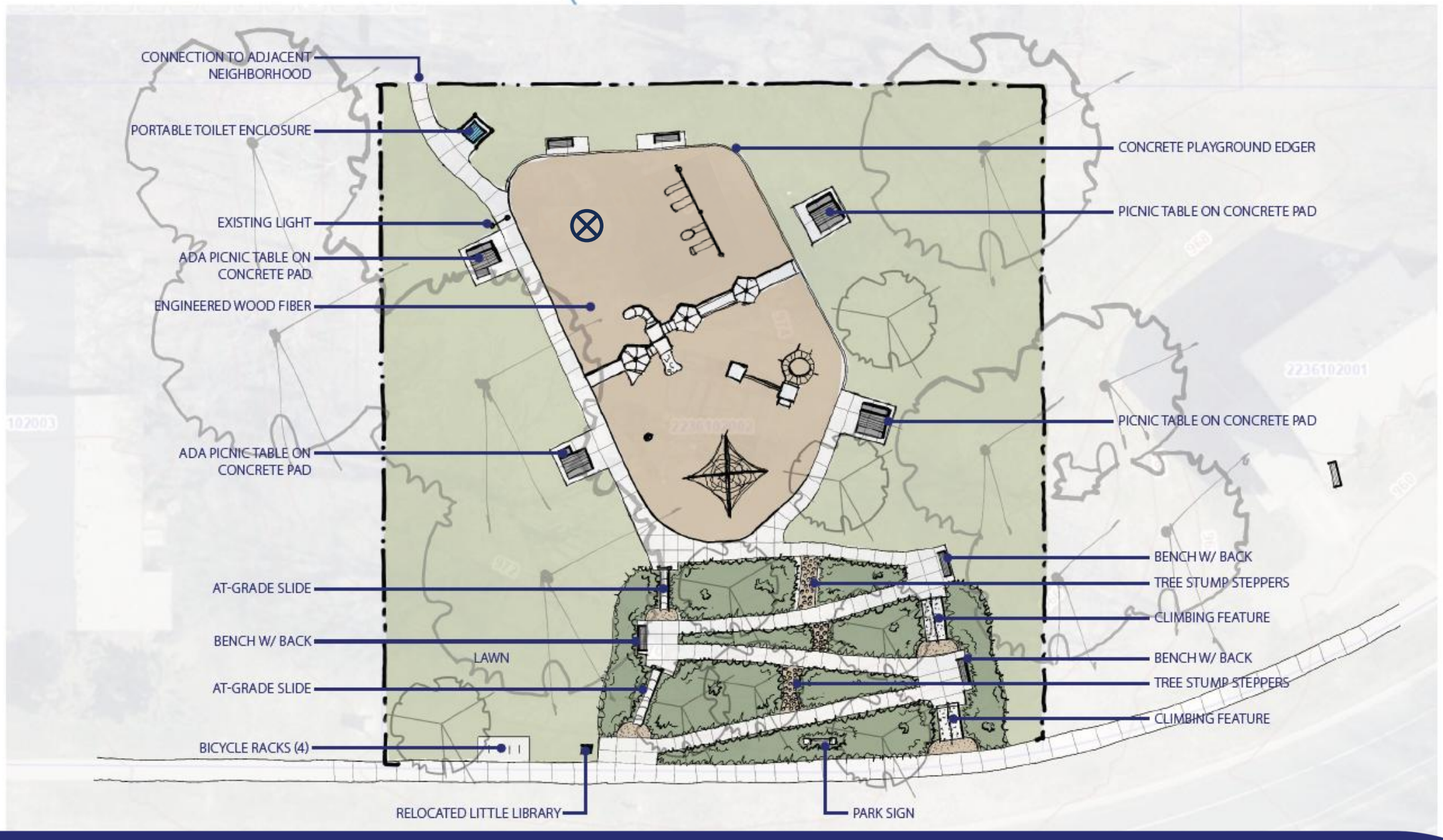
CENTRAL PARK PLAYGROUND – construction documents

detailed salvage plan + site plan + construction details

CITY COUNCIL MEETING 7 APRIL 2026







DRESDEN HILL PARK – concept plan

proposed repair + replacement + enhancements

CITY COUNCIL MEETING 7 APRIL 2026



HILLSIDE SLIDE



2-5 YEAR AGE GROUP PLAY AREA



HILLSIDE CLIMBING WALL



NET CLIMBER



STUMPERY STEPS

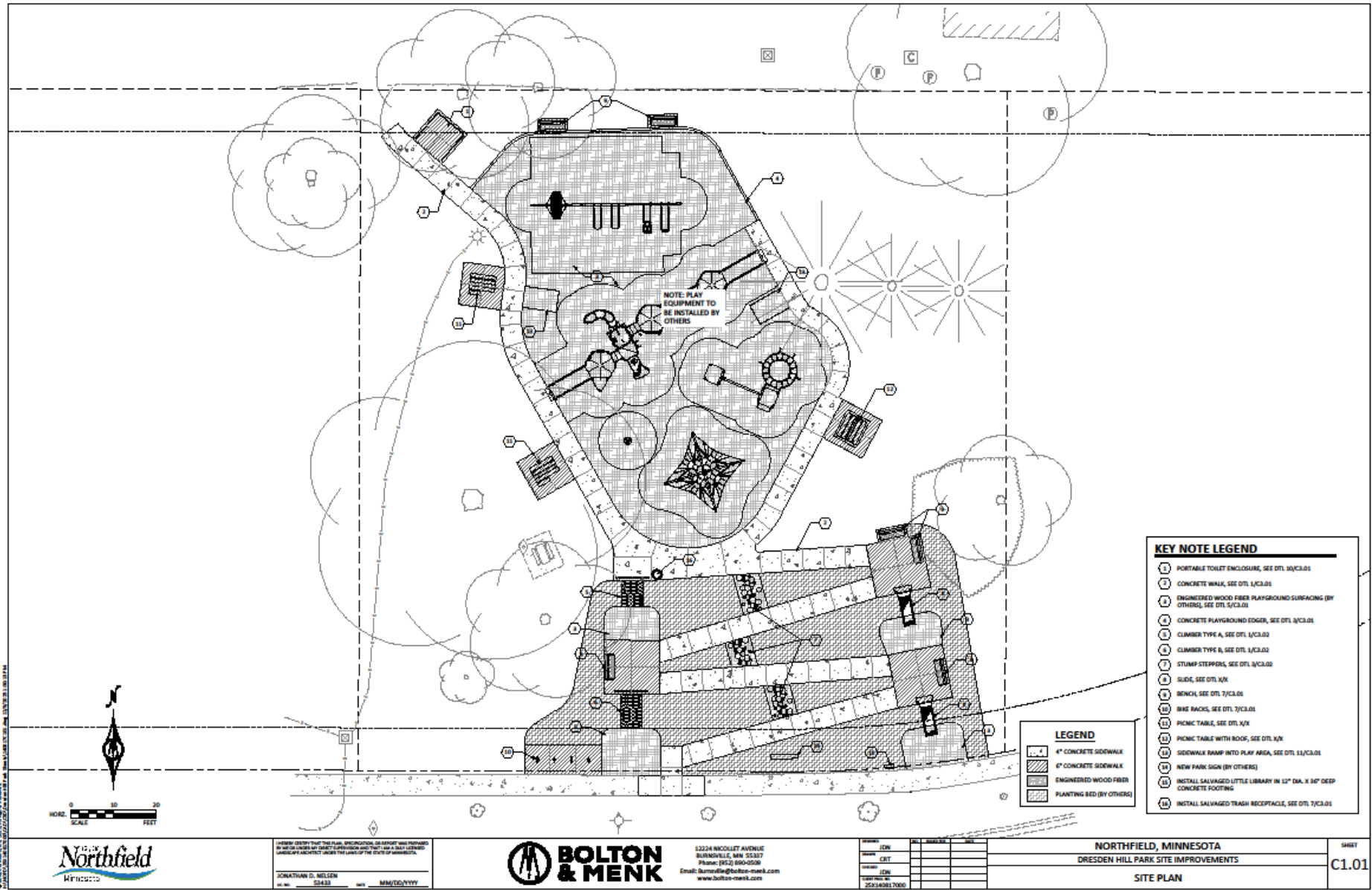


PICNIC TABLE W/ CANOPY



DRESDEN HILL PARK – character sketch
proposed repair + replacement + enhancements

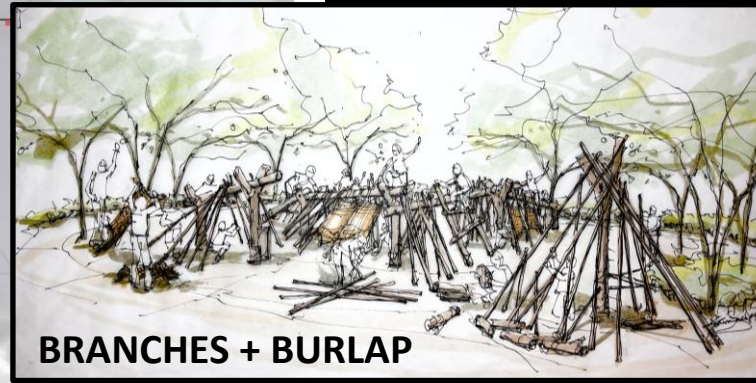
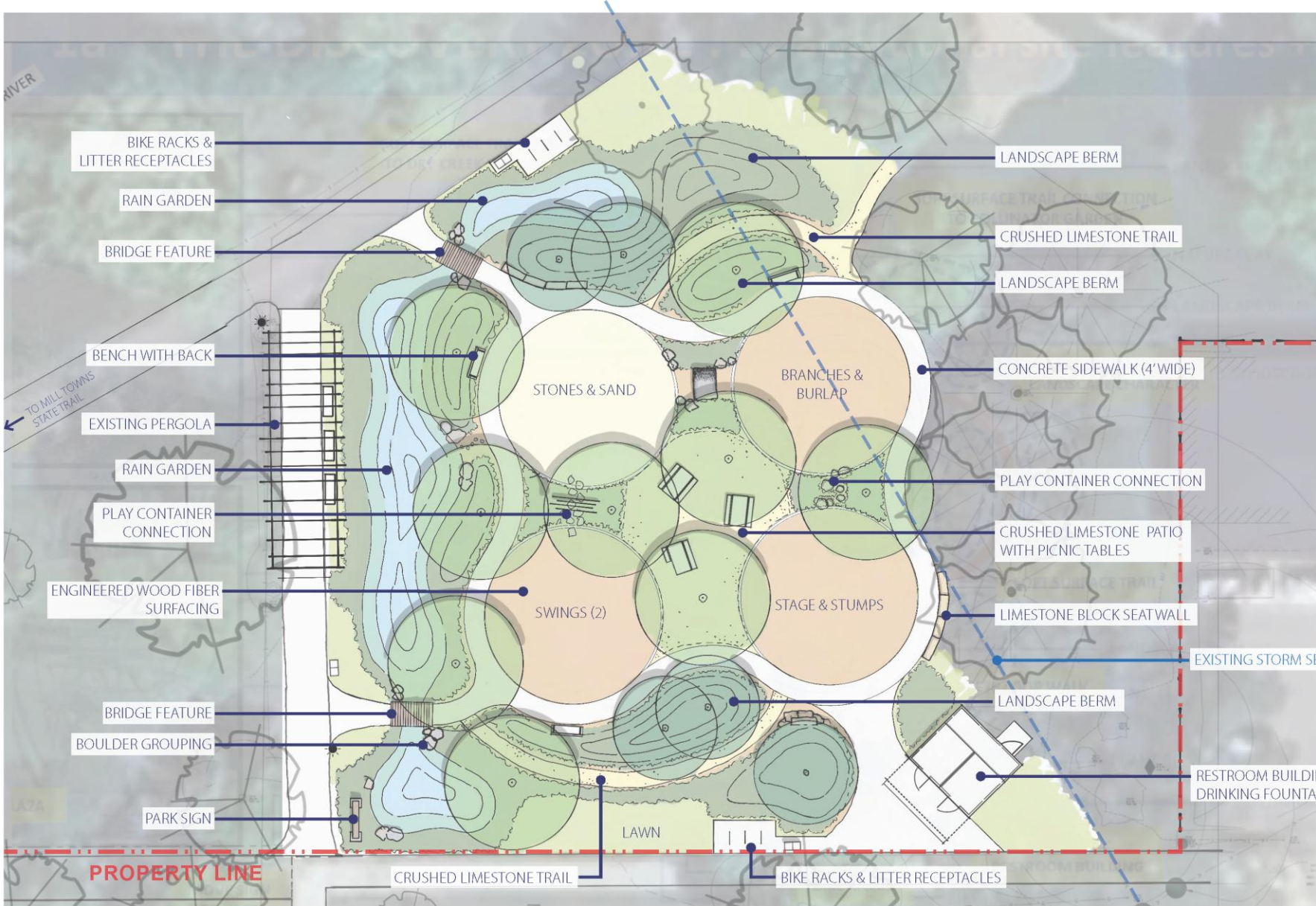
CITY COUNCIL MEETING 7 APRIL 2026



DRESDEN HILL PARK + PLAYGROUND – construction documents

detailed salvage plan + site plan + construction details

CITY COUNCIL MEETING 7 APRIL 2026

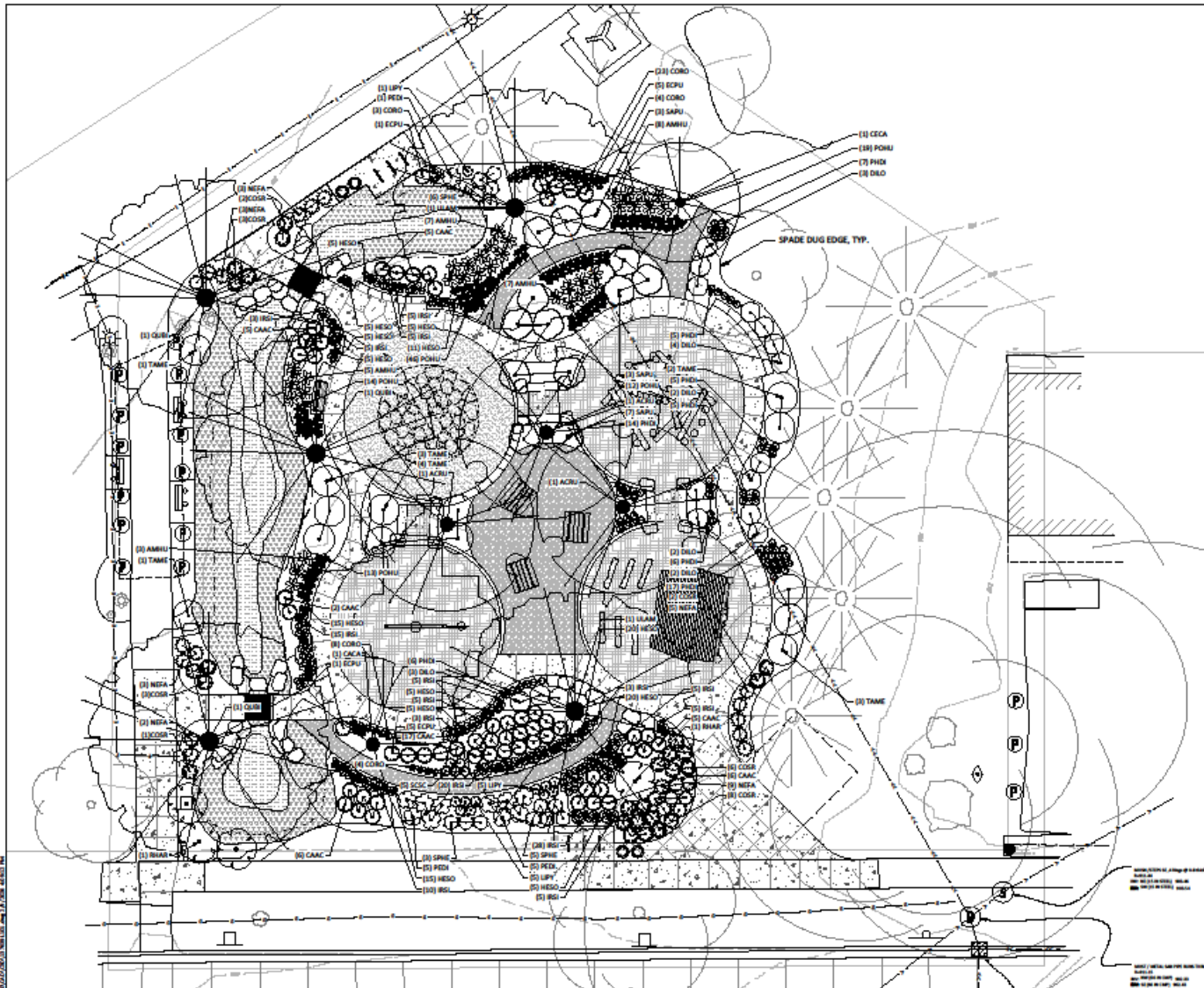


RIVERSIDE LIONS PARK 'THE DISCOVERY ZONE' – concept plan

proposed nature-based play spaces + loop walk + picnic patio

CITY COUNCIL MEETING 7 APRIL 2026





PLANT SCHEDULE				
CODE	QTY	BOTANICAL NAME	COMMON NAME	CAULDER
LANDSCAPE TREES				
CACA	1	CARPINUS CAROLINIANA	AMERICAN HORNBEAM	2.5" CAL.
CECA	1	QUERCUS SPECIOSA	SWAMP WHITE OAK	2.5" CAL.
ULAM	2	ULMUS AMERICANA 'PRINCETON'	PRINCETON AMERICAN ELM	2.5" CAL.
UNDERSTORY TREES				
ACRU	8	ALER RUBRUM 'SUN VALLEY'	SUN VALLEY RED MAPLE	2" CAL.
COCA	5	CORCIS 'ANDROSCE'	PAVING BERRY	2" CAL.
MASS	2	MAHUA 'SPRING SNOW'	SPRING SNOW CRABAPPLE	2" CAL.
DECIDUOUS SHRUBS				
COOR	24	CORNUS SERICEA 'ELEGANT'	SWAMP RED YEW DOGWOOD	8" CONT.
DELO	24	DESMILLA LONGICORNIS	SWAMP BUSH HONEYLOCHE	8" CONT.
BRAB	4	BREXIA ARGENTATA 'SUN-LONG'	GRASS-LOW FRAGRANT SUMAC	8" CONT.
SAPU	12	SAPINDUS PERSEICUS 'NANA'	SWAMP ARCTIC BLUE WILLOW	8" CONT.
EVERGREEN SHRUBS				
TAME	24	TAXUS X MEDIA 'TAUNTON'	TAUNTON SPREADING YEW	CONSPICUOUS SHRUB 18" HT. CONT.
ORNAMENTAL GRASSES				
CACA	48	CALAMAGROSTIS ACUTICORNIS	RAVE FORTYSEVEN FEATHER REED GRASS	8" CONT.
SCOP	8	SCORPIS HYBRIDUS SCOPARIUM	STIFF BENTGRASS	8" CONT.
SPLE	24	SPOROBOLUS HYPERICIFOLIS	PRairie DROPSEED	8" CONT.
PERENNIALS				
AMBU	12	AMONGONIA VERBOSUS 'STRONG THEORY'	STRONG THEORY BELLEGRASS	8" CONT.
COGO	48	COROPHOSUS BOEHA 'AMERICAN DREAM'	PINK HYDRANGEA COROPHOSUS	8" CONT.
ROPU	12	ROCKWORTHIA PURPUREA	CONIFERWOOD	8" CONT.
HECO	12	HEMORICALLIS 'STELLA DE ORO'	STELLA DE ORO DWARF	8" CONT.
ROA	12	ROSA 'SUNSHINE BABY SISTER'	BABY SISTER ROSEBUSH	8" CONT.
LIPP	12	LIPARIS PROCRUSTACEA	PRairie BLAZING STAR	8" CONT.
NEHA	24	NEPETA 'TACONICUM' WILLIAMS'S LIP	WILLIAMS'S LOW CATMINT	8" CONT.
PEPE	12	PERITHECUM DIGITALIS 'SUNNY AND PEACE'	SUNNY AND PEACE SWARTZBONALDI	8" CONT.
PHIL	8	PHILLO DEWARICATA 'LAPINARI'	WOODLAND PHILEAS	8" CONT.
POHU	24	POLYGONATUM HUMILE	SWAMP SOLDANION'S SEAL	8" CONT.

LEGEND	
	PROPOSED FOR AND WITH BEDS MIX (200 TOTAL PLANTS)
	PROPOSED MAIN GARDEN PLANT MIX (264 TOTAL PLANTS)

- NOTES**
- MAIN GARDEN PLANT MIX SHALL BE AN EQUAL MIX OF THE FOLLOWING PLANTS, PLANTED AT 24" O.C. TRIANGULAR SPACING, IN GROUPS OF 12: SOLIDAGO SPECIOSA / SHOWY GOLDENROD, SPOROBOLUS HYPERICIFOLIS / PRAIRIE DROPSEED, ANDROPOGON SCOPARIUS / LITTLE BLUESTEM, SCHMACKIA PURPUREA / PURPLE CONIFERWOOD.
 - SPADE DUG EDGE ON PLANTING BEDS IS INCIDENTAL.



WE HEREBY CERTIFY THAT THE FINAL SPECIFICATION DOCUMENT WAS PREPARED BY A LICENSED PROFESSIONAL LANDSCAPE ARCHITECT REGISTERED WITH THE STATE OF MINNESOTA.

JONATHAN R. NELSON
 LANDSCAPE ARCHITECT
 25437 26TH AVE. S.
 BURNSVILLE, MN 55337
 952-890-0508
 jon@bolton-and-menk.com
 www.bolton-and-menk.com



12224 NICOLETT AVENUE
 BURNSVILLE, MN 55337
 Phone: (952) 890-0508
 Email: jon@bolton-and-menk.com
 www.bolton-and-menk.com

NO.	REV.	DATE	DESCRIPTION

CITY OF NORTHFIELD, MINNESOTA
 2026 PARK IMPROVEMENTS
 LANDSCAPING PLAN - RIVERSIDE PARK

SHEET
 L1.02



THE DISCOVERY ZONE – construction documents
 detailed salvage plan + site plan + construction details
 CITY COUNCIL MEETING 7 APRIL 2026



3 PARKS + PLAYGROUNDS
PARKS CIP BUDGET
\$ 935,000

CONTRACTOR
INITIAL BIDS
\$ 1,095,559

PROJECT COSTS
VETTED BIDS
\$ 994,299

3 PARKS + PLAYGROUNDS PROJECT – budget and bid process
verifying construction costs

CITY COUNCIL MEETING 7 APRIL 2026

3 PARKS + PLAYGROUNDS

PARKS CIP BUDGET

\$ 935,000

CONTRACTOR

INITIAL BIDS

\$ 1,095,559

PROJECT COSTS

VETTED BIDS

\$ 994,299

Bid Package #1 – existing equipment salvage + site prep

\$ 36,260

Bid Package #2 – site work [all three parks]

\$ 517,549

Bid Package #3 – playground equipment [Central + Dresden]

\$ 266,490

Bid Package #4 – place spaces [The Discovery Zone]

\$ 174,000

CONTRACTOR PROJECT COSTS [VETTED BIDS] \$ 994,299

**3 PARKS + PLAYGROUNDS PROJECT – bid packages
construction packages + contracts**

CITY COUNCIL MEETING 7 APRIL 2026

3 PARKS + PLAYGROUNDS

PARKS CIP BUDGET

\$ 935,000

CONTRACTOR

INITIAL BIDS

\$ 1,095,559

PROJECT COSTS

VETTED BIDS

\$ 994,299

Bid Package #1 – existing equipment salvage + site prep

\$ 36,260

Bid Package #2 – site work [all three parks]

\$ 517,549

Bid Package #3 – playground equipment [Central + Dresden]

\$ 266,490

Bid Package #4 – place spaces [The Discovery Zone]

\$ 174,000

CONTRACTOR PROJECT COSTS [VETTED BIDS]

\$ 994,299

add 1% for art

\$ 9,943

add project overhead

\$ 40,000

add 10% construction contingencies

\$ 51,755

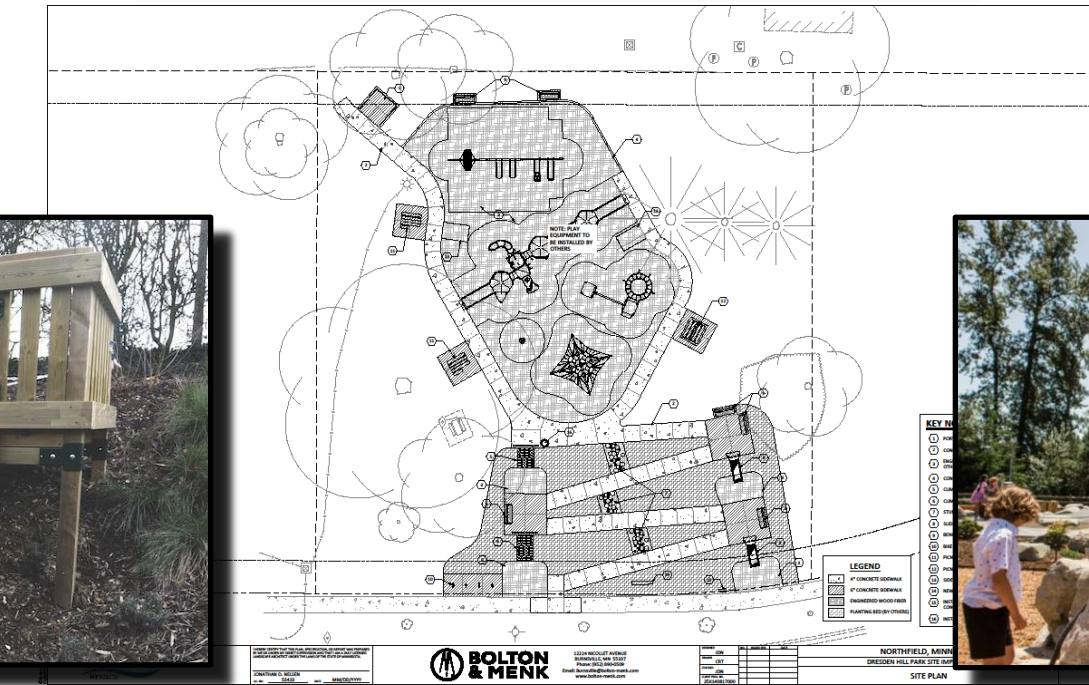
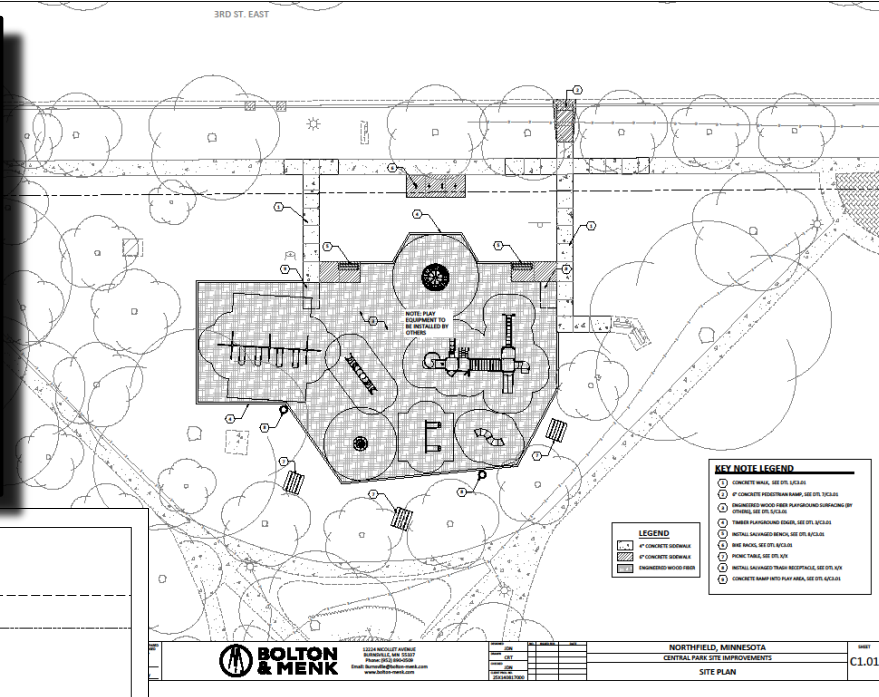
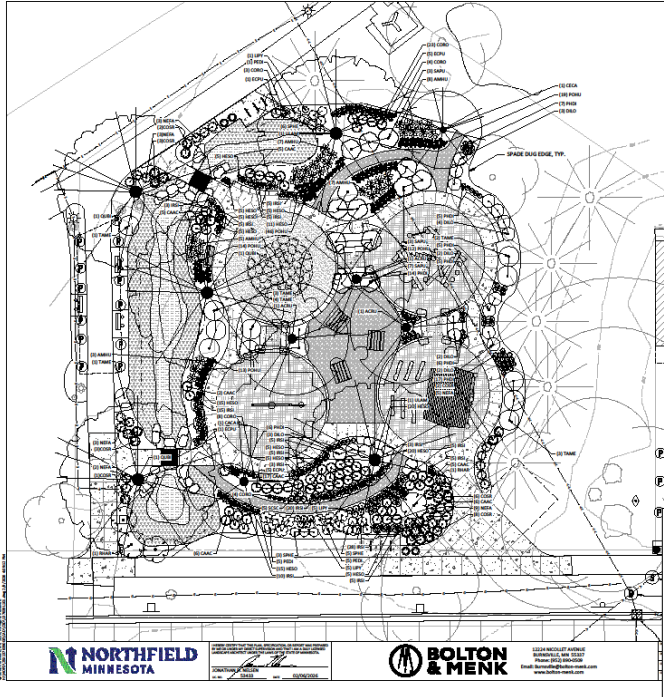
TOTAL PROJECT COST

\$ 1,095,997

3 PARKS + PLAYGROUNDS PROJECT – total project costs

city defined additional costs

CITY COUNCIL MEETING 7 APRIL 2026



3 PARKS + PLAYGROUNDS PROJECT
 proposed spring 2026 construction
 CITY COUNCIL MEETING 7 APRIL 2026