

January 21, 2020
City Council Meeting

City of Northfield TH246 & Jefferson Parkway Roundabout Project Final Plan Approval



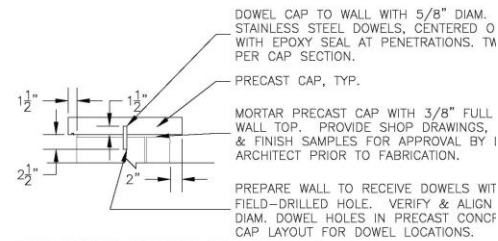
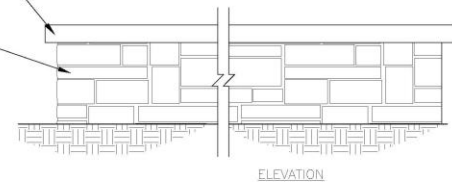
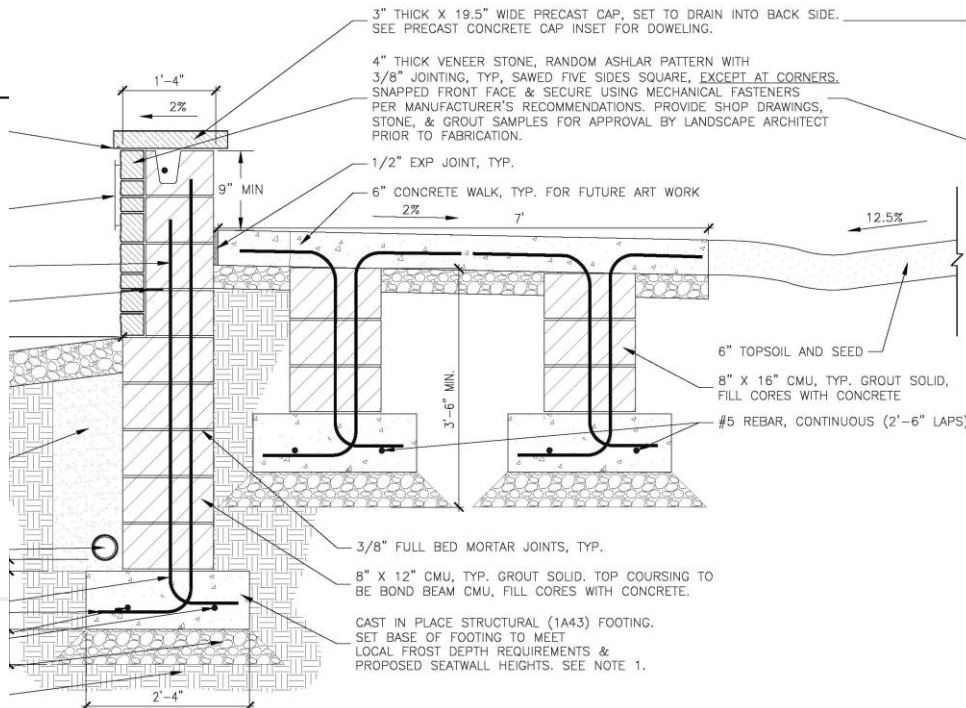
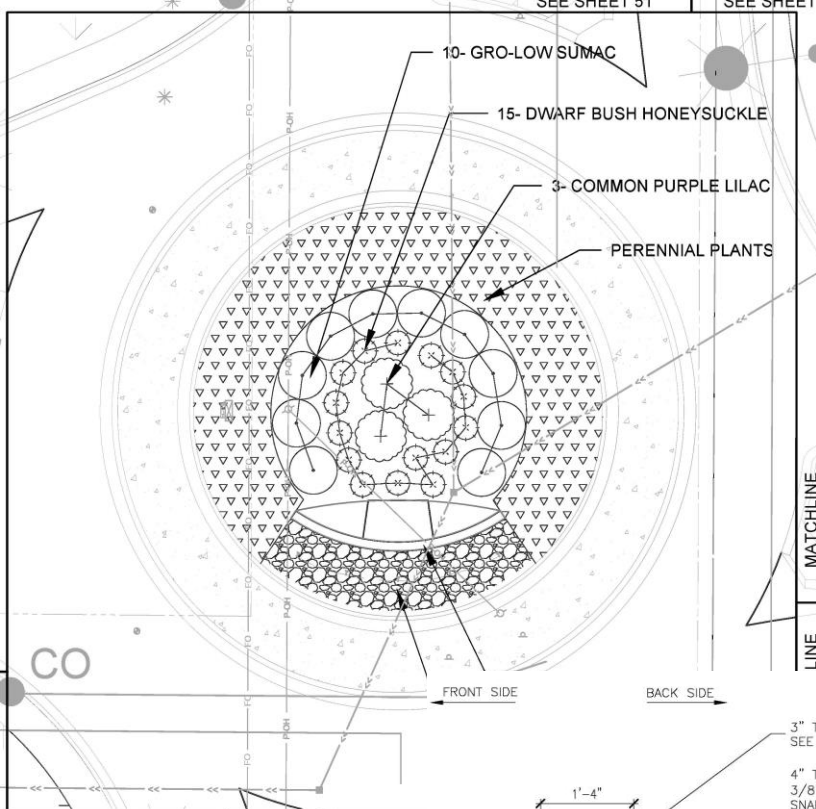
Proposed Landscape Plans



Proposed Landscape Plans

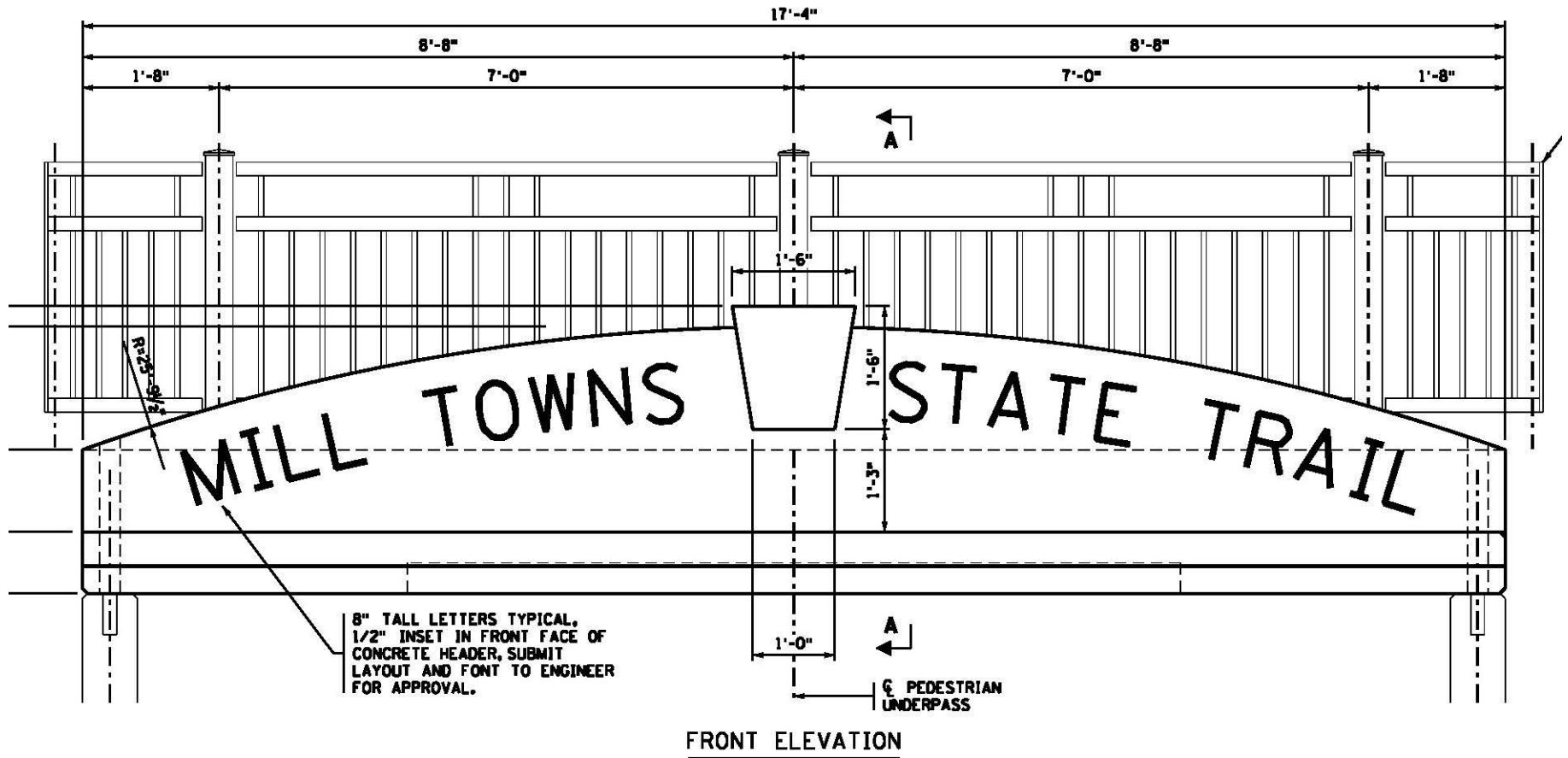


Proposed Gateway Monument



- NOTES:
1. MAINTAIN TOP OF PEDESTAL LEVEL ALONG LENGTH OF STRUCTURE. MAXIMUM HEIGHT OF PEDESTAL IS 36 INCHES.
 2. TOP OF FOOTING TO MATCH BOTTOM ELEV. OF CONG.

Mill Towns State Trail



PORTAL LINTEL BEAM AT EACH END OF BOX

Project Schedule

- Open Bids February 27
- Award March 10
- Contractor Orders Pedestrian Underpasses
- Private Utility Relocation Work
 - April-May
- Intersection will close beginning of May
- Construction May – October 21
- Early Completion Incentive
 - Goal of trying to complete before school opens in Fall on 2020.
 - Everyday completed before Oct. 21
 - 45 days maximum
 - Incentive of \$1,500/day
 - Maximum of \$67,500

Project Detour

STATE LANE. CLOSE TH-246 FROM 400 FEET SOUTH OF JEFFERSON PARKWAY TO 800 FEET NORTH OF JEFFERSON PARKWAY. CLOSE ALL TRAILS AND SIDEWALKS TO PEDESTRIANS AND BICYCLES.
 COMPLETE EXCAVATION AND EMBANKMENT, WATER MAIN, BOX CULVERTS, STORM SEWER, RETAINING WALL, PAVEMENT SUBBASE, LIGHTING, CURB AND GUTTER, BITUMINOUS PAVEMENT WEARING COURSE, AND TRAIL AND SIDEWALK PAVING. INSTALL LANDSCAPING, PERMANENT SIGNING, AND TEMPORARY PAVEMENT MARKINGS.
 SPRING 2021, COMPLETE BITUMINOUS PAVEMENT WEARING COURSE AND PERMANENT PAVEMENT MARKINGS. COMPLETE WARRANTY WORK.
 THE WEST AND NORTH LEGS OF THE INTERSECTION (AND CENTER CIRCLE) SHALL BE COMPLETED AND RE-OPENED TO TRAFFIC ON OR BEFORE SEPTEMBER 4, 2020.

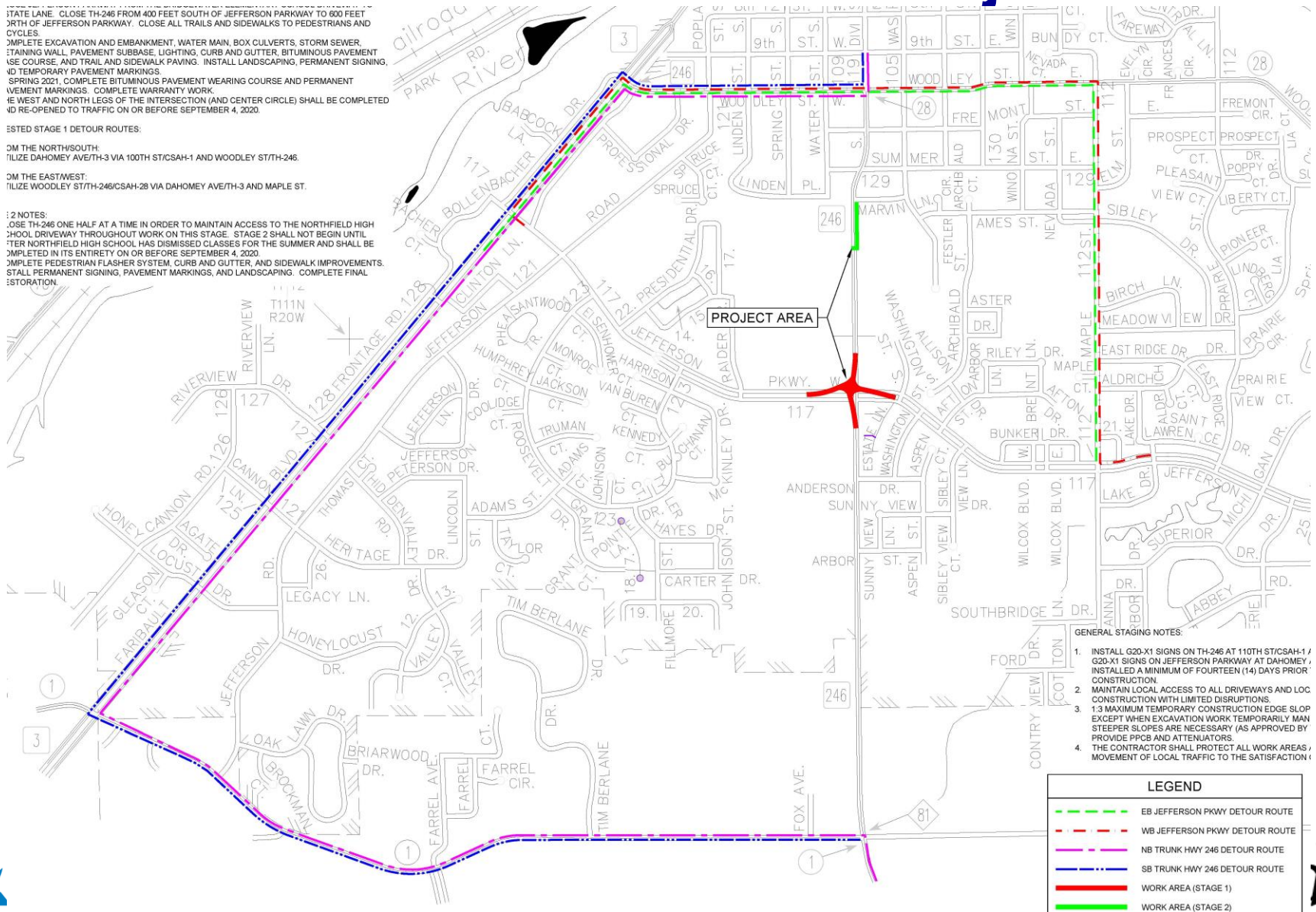
TESTED STAGE 1 DETOUR ROUTES:

FROM THE NORTH/SOUTH:
 UTILIZE DAHOMEY AVE/TH-3 VIA 100TH ST/CSAH-1 AND WOODLEY ST/TH-246.

FROM THE EAST/WEST:
 UTILIZE WOODLEY ST/TH-246/CSAH-2B VIA DAHOMEY AVE/TH-3 AND MAPLE ST.

2 NOTES:

1. CLOSE TH-246 ONE HALF AT A TIME IN ORDER TO MAINTAIN ACCESS TO THE NORTHFIELD HIGH SCHOOL DRIVEWAY THROUGHOUT WORK ON THIS STAGE. STAGE 2 SHALL NOT BEGIN UNTIL AFTER NORTHFIELD HIGH SCHOOL HAS DISMISSED CLASSES FOR THE SUMMER AND SHALL BE COMPLETED IN ITS ENTIRETY ON OR BEFORE SEPTEMBER 4, 2020.
 2. COMPLETE PEDESTRIAN FLASHER SYSTEM, CURB AND GUTTER, AND SIDEWALK IMPROVEMENTS. INSTALL PERMANENT SIGNING, PAVEMENT MARKINGS, AND LANDSCAPING. COMPLETE FINAL RESTORATION.



- GENERAL STAGING NOTES:**
1. INSTALL G20-X1 SIGNS ON TH-246 AT 110TH ST/CSAH-1 / G20-X1 SIGNS ON JEFFERSON PARKWAY AT DAHOMEY / INSTALL A MINIMUM OF FOURTEEN (14) DAYS PRIOR TO CONSTRUCTION.
 2. MAINTAIN LOCAL ACCESS TO ALL DRIVEWAYS AND LOCAL CONSTRUCTION WITH LIMITED DISRUPTIONS.
 3. 1:3 MAXIMUM TEMPORARY CONSTRUCTION EDGE SLOPE EXCEPT WHEN EXCAVATION WORK TEMPORARILY REQUIRES STEEPER SLOPES ARE NECESSARY (AS APPROVED BY THE CONTRACTOR). PROVIDE PPCBS AND ATTENUATORS.
 4. THE CONTRACTOR SHALL PROTECT ALL WORK AREAS, AND THE MOVEMENT OF LOCAL TRAFFIC TO THE SATISFACTION OF THE LOCAL COMMUNITY.

LEGEND	
	EB JEFFERSON PKWY DETOUR ROUTE
	WB JEFFERSON PKWY DETOUR ROUTE
	NB TRUNK HWY 246 DETOUR ROUTE
	SB TRUNK HWY 246 DETOUR ROUTE
	WORK AREA (STAGE 1)
	WORK AREA (STAGE 2)



Questions