

# CANNON RIVER WEST SECOND ADDITION

KNOW ALL PERSONS BY THESE PRESENTS: That Theologia B. Pitsavas, a single person, fee owner, and The City of Northfield, a municipal corporation, fee owners, of the following described property situated in the county of Rice, State of Minnesota, to wit:

Lot 1, Lot 2 and Lot 3, Block 3, CANNON RIVER WEST ADDITION, according to the recorded plat thereof, Rice County, Minnesota.

Have caused the same to be surveyed and platted as CANNON RIVER WEST SECOND ADDITION and do hereby donate and dedicate to the public for public use the thoroughfare and also dedicate the easement as shown on this plat for drainage and utility purposes only.

In witness whereof said Theologia B. Pitsavas, a single person, has hereunto set her hand this \_\_\_\_ day of \_\_\_\_\_, 20\_\_.

\_\_\_\_\_  
Theologia B. Pitsavas

STATE OF MINNESOTA  
COUNTY OF \_\_\_\_\_

The foregoing instrument was acknowledged before me this \_\_\_\_ day of \_\_\_\_\_, 20\_\_, by Theologia B. Pitsavas, a single person.

\_\_\_\_\_  
Notary Public \_\_\_\_\_ County, Minnesota  
My Commission expires \_\_\_\_\_

In witness whereof said City of Northfield, a municipal corporation under the laws of the State of Minnesota, has caused these presents to be signed by its proper officer, this \_\_\_\_ day of \_\_\_\_\_, 20\_\_.

\_\_\_\_\_  
Mayor Clerk of the City of Northfield

State of Minnesota  
County of \_\_\_\_\_

This instrument was acknowledged before me on \_\_\_\_\_, by \_\_\_\_\_, Mayor and \_\_\_\_\_, Clerk of the City of Northfield.

\_\_\_\_\_  
Notary Public, \_\_\_\_\_  
My commission expires \_\_\_\_\_

I hereby certify that I have surveyed or directly supervised the survey of the property described on this plat; that I prepared or directly supervised the preparation of this plat as CANNON RIVER WEST SECOND ADDITION, that this plat is a correct representation of the boundary survey, that all mathematical data and labels are correctly designated on the plat; that all monuments depicted on the plat have been correctly set; that as of the date of this certificate, all water boundaries and wetlands, as defined in Minnesota Statutes 505.01, Subd. 3, are shown and labeled on the plat; and that all public ways are shown and labeled on the plat.

\_\_\_\_\_  
David G. Rapp, Land Surveyor  
Minnesota License Number 22044

STATE OF MINNESOTA  
COUNTY OF GOODHUE

The foregoing Surveyor's Certificate was acknowledged before me this \_\_\_\_ day of \_\_\_\_\_, 20\_\_, by David G. Rapp, Land Surveyor.

\_\_\_\_\_  
Notary Public, Goodhue County, Minnesota  
My Commission expires \_\_\_\_\_

I hereby certify that in accordance to Minnesota Statutes, Section 505.021, Subd. 11, this plat has been reviewed and approved this \_\_\_\_ day of \_\_\_\_\_, 20\_\_.

\_\_\_\_\_  
Michael Fangman, Rice County Surveyor

NORTHFIELD CITY COUNCIL  
Approved by the City Council of Northfield, Minnesota, this \_\_\_\_ day of \_\_\_\_\_, 20\_\_.

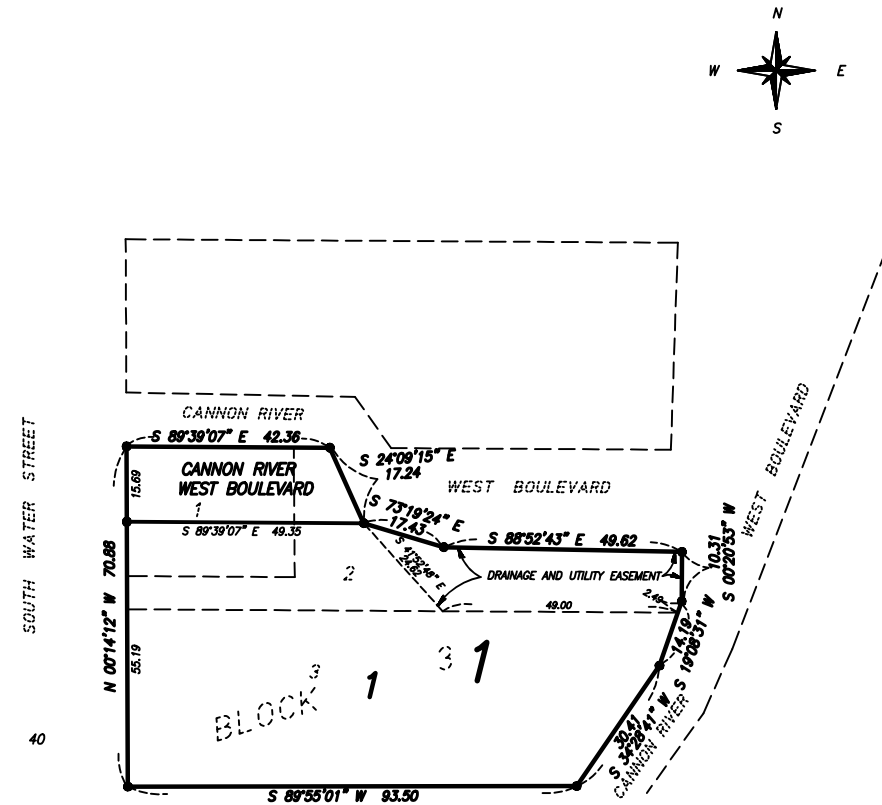
Signed \_\_\_\_\_  
Mayor City Clerk

I hereby certify the taxes payable in the year 20\_\_ on the land herein described have been paid, there are no delinquent taxes and transfer has been entered this \_\_\_\_ day of \_\_\_\_\_, 20\_\_.

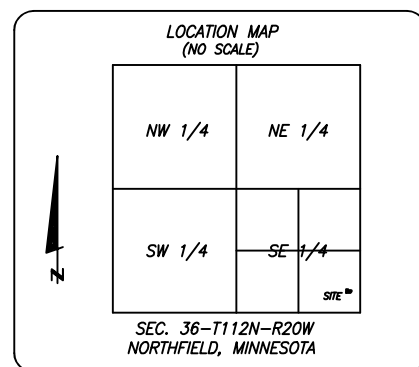
\_\_\_\_\_  
Fran Windschitl, Rice County Auditor/Treasurer  
By \_\_\_\_\_, Deputy

I hereby certify that this plat of CANNON RIVER WEST SECOND ADDITION was filed in this office for record this \_\_\_\_ day of \_\_\_\_\_, 20\_\_, at \_\_\_\_ o'clock \_\_\_\_ M. and was duly recorded as document number \_\_\_\_\_, file number \_\_\_\_\_.

\_\_\_\_\_  
Judy Van Epp, Rice County Recorder



SOUTH WATER STREET  
40



BEARINGS ARE BASED ON THE ASSUMPTION THAT THE WEST LINE OF BLOCK 3 OF CANNON RIVER WEST ADDITION HAS A BEARING OF N 00°14'12" W.

- DENOTES SET 1/2" X 15" IRON REBAR MONUMENT WITH PLASTIC CAP MARKED PLS 22044 UNLESS OTHERWISE INDICATED.
- DENOTES FOUND IRON MONUMENT



**RAPP LAND SURVEYING, INC.**  
45967 HWY 56 BLVD  
KENYON, MN 55946  
507-789-5366